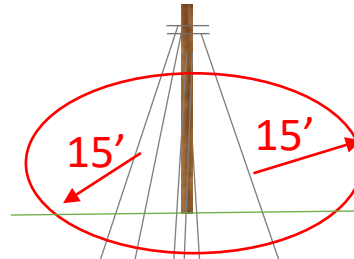
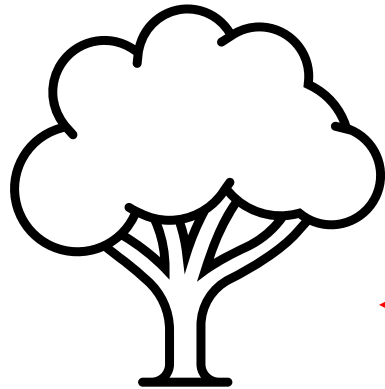


**ENCHANCED** – this is followed when a pre-conversion (new poles and wires) is coming to an area soon

No overhang will be left



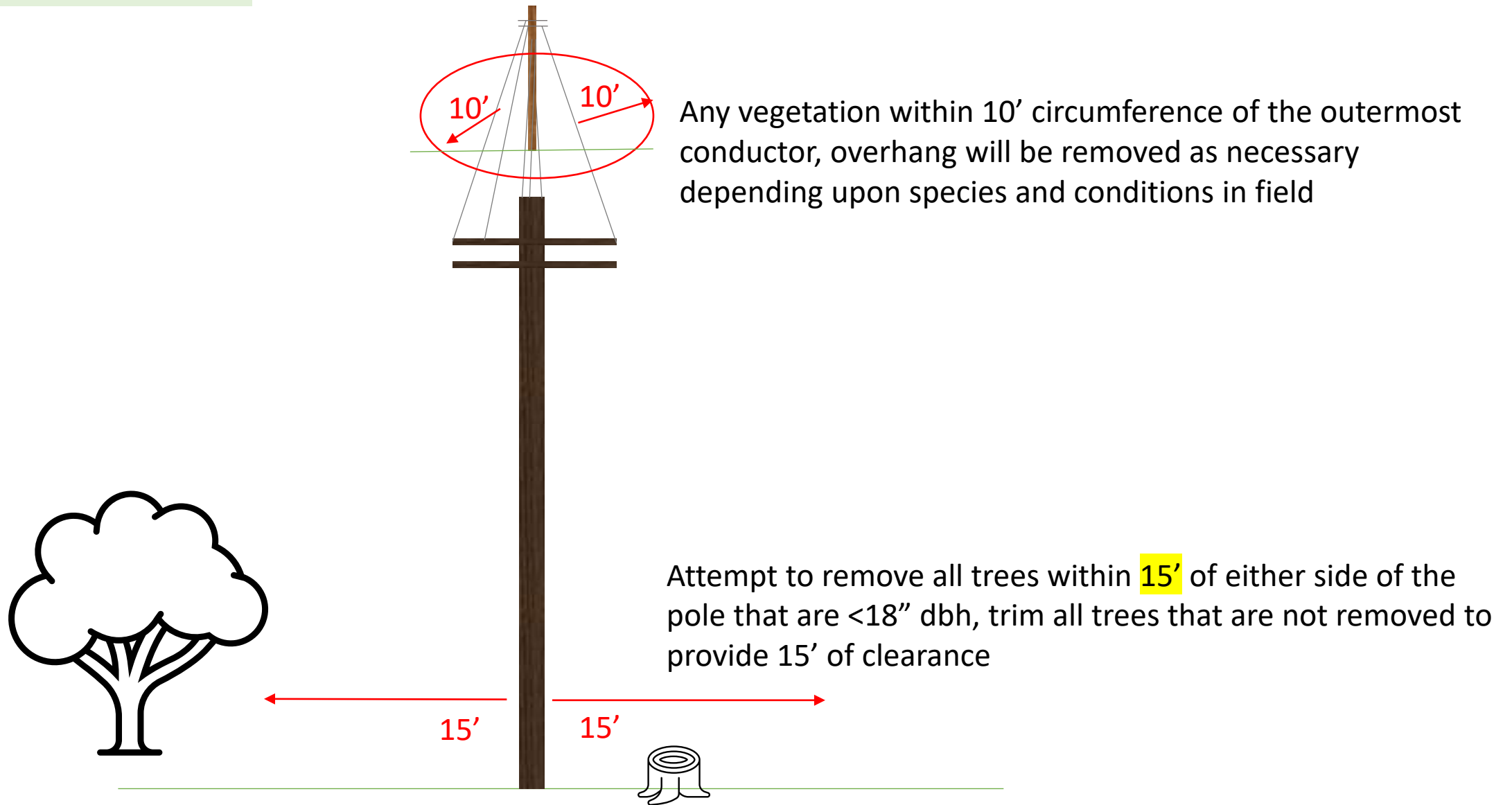
Any vegetation within 15' circumference of the outermost conductor



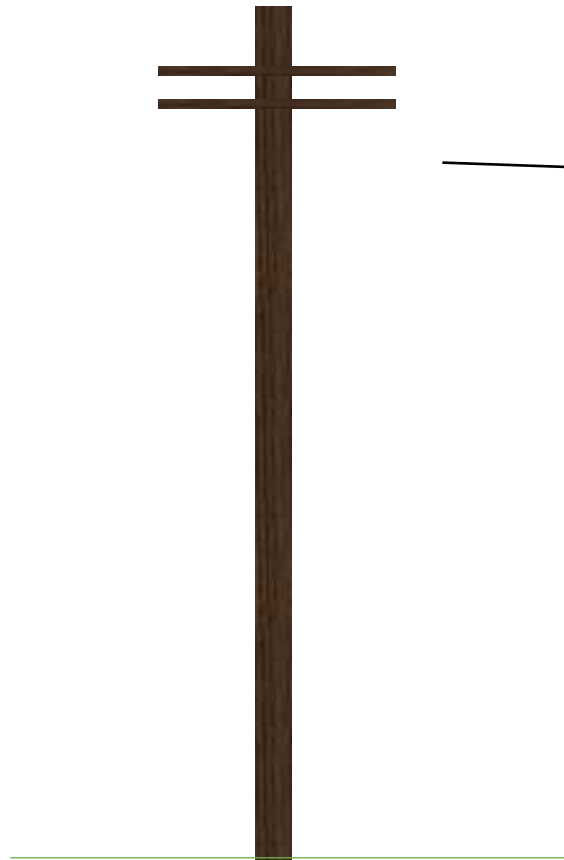
Attempt to remove all trees within 15' of either side of the pole that are <18" dbh, trim all trees that are not removed to provide 15' of clearance



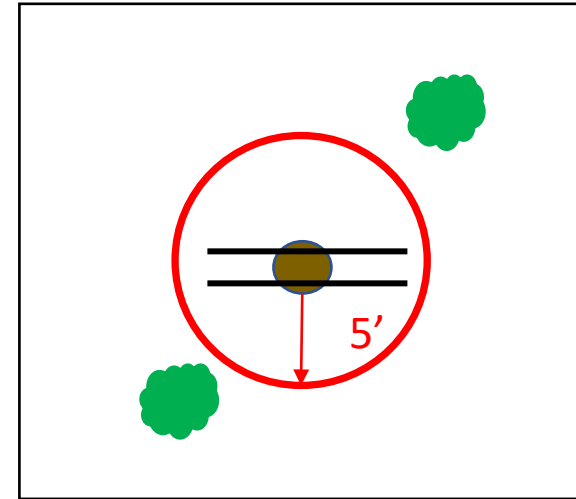
## Standard Maintenance Cycle



**ENCHANCED** – this is followed when a pre-conversion (new poles and wires) is coming to an area soon

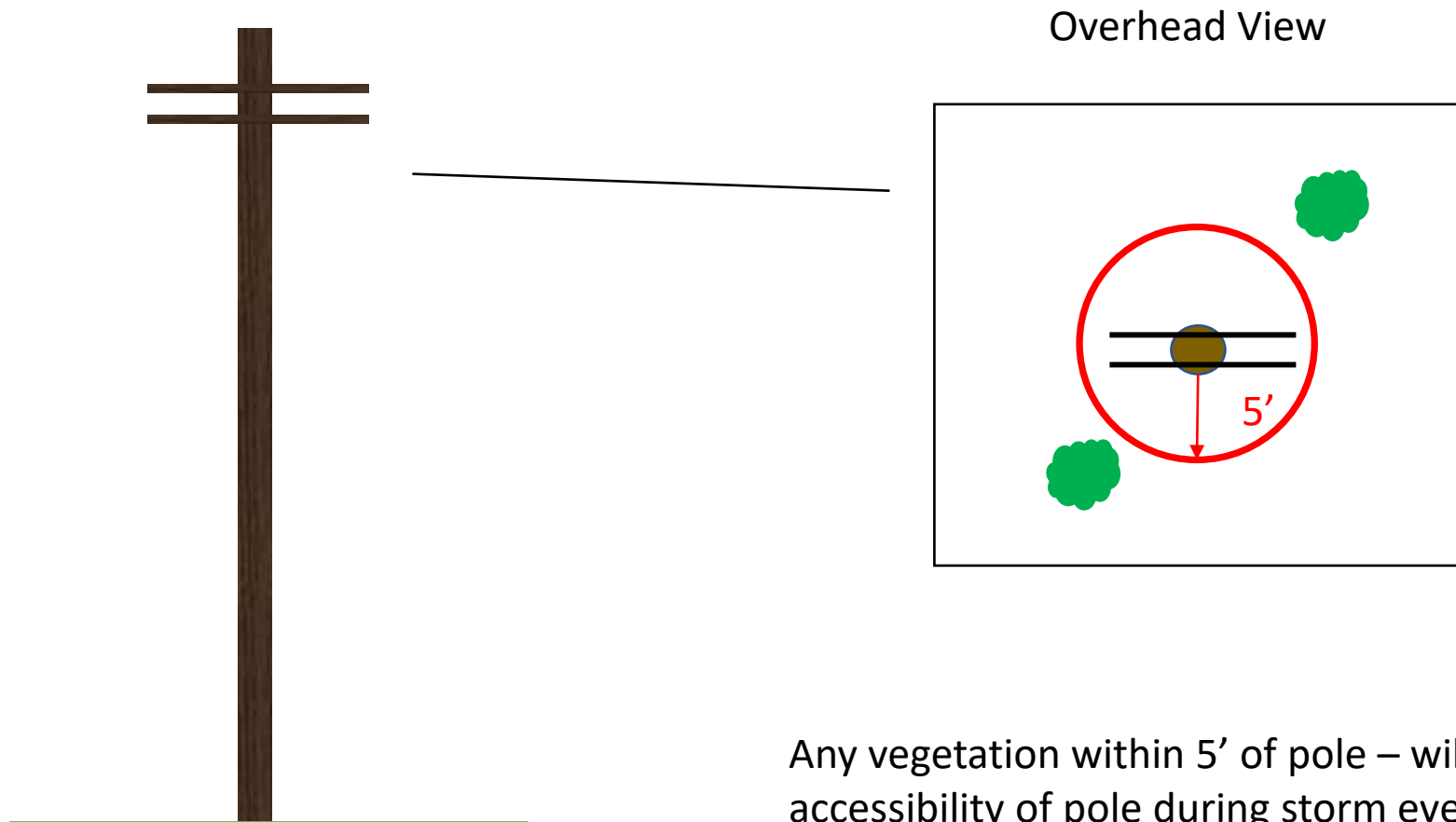


Overhead View



Any vegetation within 5' of pole – will request to remove for accessibility of pole during storm events or future upgrades

## Standard Maintenance Cycle



Any vegetation within 5' of pole – will request to remove for accessibility of pole during storm events or future upgrades