

4071 Leslie Street

Window Dimensioned Diagrams

Prepared by Alexandria Home Solutions

FRONT ELEVATION UNITS



FRONT ELEVATION PHOTO



BACK ELEVATION UNITS



BACK ELEVATION PHOTO



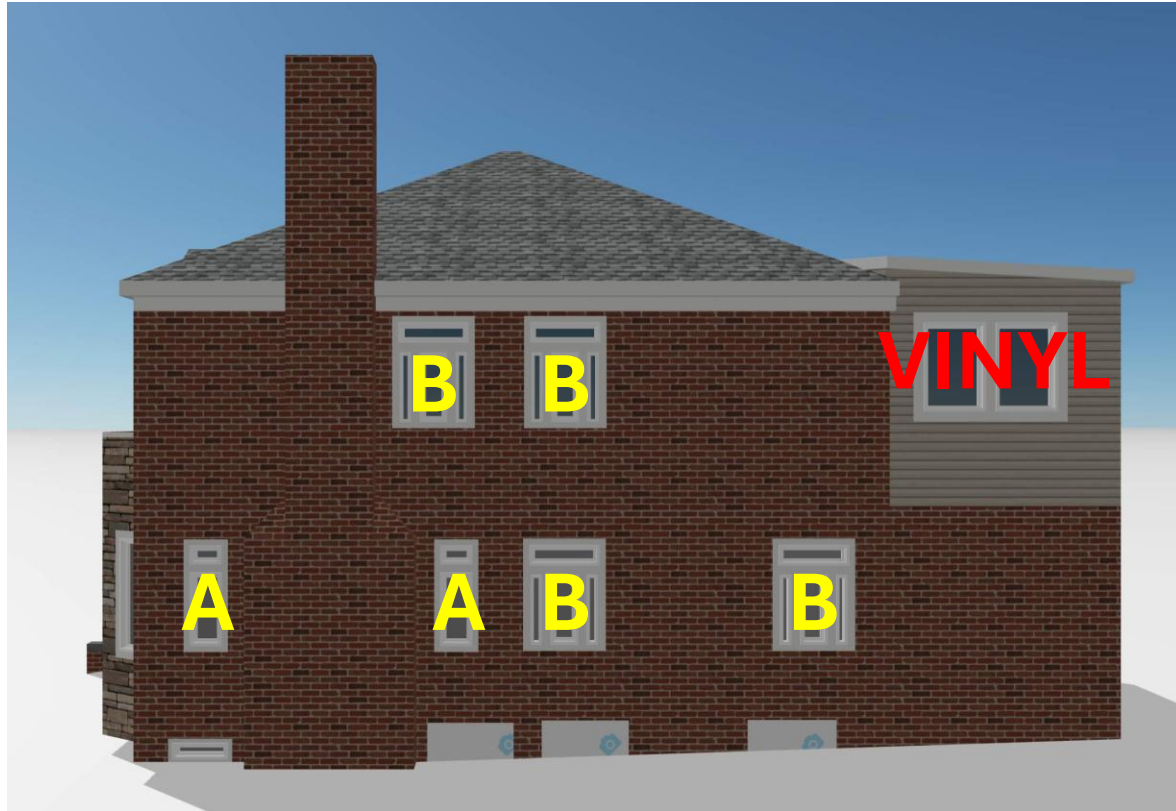
LEFT ELEVATION UNITS



LEFT ELEVATION PHOTOS



RIGHT ELEVATION UNITS



RIGHT ELEVATION PHOTO



Window Style “A”

Brick to Brick Opening: 22”x56”

Top Storm Window: 17”x12”

Bottom Storm Window: 17”x36”

Top Grid Dimensions: 8-1/2”x12”

Bottom Grid Dimensions: 8-1/2”x12”



Window Style “B”

Brick to Brick Opening: 40”x56”

Top Storm Window: 36”x12”

Bottom Side Storm Windows: 8-1/2”x36”

Bottom Center Storm Window: 17”x36”

Top Grid Dimensions: 8-1/2”x12”

Bottom Side Grids Dimensions: 8-1/2”x12”

Bottom Center Grid Dimensions: 8-1/2”x12”



Window Style “C”

Brick to Brick Opening: 59”x55”

Top Storm Window: 54”x12”

Bottom Side Storm Windows: 8-1/2”x36”

Bottom Center Storm Windows: 17”x36”

Top Grid Dimensions: 9”x12”

Bottom Side Grids Dimensions: 8-1/2”x12”

Bottom Center Grid Dimensions: 8-1/2”x12”



Window Style “D”

Edge to Edge Opening: 40”x43”

Side Storm Windows: 8-1/2”x41”

Center Storm Window: 17”x40”

Side Grids Dimensions: 8-1/2”x13-3/4”

Center Grid Dimensions: 8-1/2”x12”



Window Style “E”

Brick to Brick Opening: 76”x67”

Top Storm Windows: 36”x12”

Bottom Storm Windows: 17-1/2”x50”

Top Grid Dimensions: 9”x12”

Bottom Grid Dimensions: 9”x12”



Window Style “F”

Brick to Brick Opening: 22”x67”

Storm Window: 17”x63”

Grid Dimensions: 8-1/2”x12”



Window Style “G”

Brick to Brick Opening: 68”x43”

Wood Mullions: 4”x43” each

Glass Blocks: 6”x43” each

Center Window Opening: 40”x43”

Center Storm Window: 17”x36”

Side Storm Windows: 8-1/2”x36”

Center Grid Dimensions: 8-1/2”x12”

Side Grid Dimensions: 8-1/2”x12”



Window Style “H”

Brick to Brick Opening: 76”x56”

Top Storm Windows: 36”x12”

Bottom Storm Windows: 17-1/2”x36”

Top Grid Dimensions: 9”x12”

Bottom Grid Dimensions: 9”x12”



Window Grids

Width on all grids is 5/8"

Closely resembles the Sierra Pacific
Traditional SDL grid design

