

UPPER FLOOR FENESTRATION SUMMARY:

NORTH FACE
TOTAL AREA = 302 SF
TOTAL FENESTRATION = 150 SF

SOUTH FACE
TOTAL AREA = 302 SF
TOTAL FENESTRATION = 150 SF

EAST FACE
TOTAL AREA = 219 SF
TOTAL FENESTRATION = 0 SF

WEST FACE
TOTAL AREA = 219 SF
TOTAL FENESTRATION = 65 SF

TOTAL AREA = 1,042 SF
TOTAL FENESTRATION = 365 SF
% FENESTRATION = 35.0%

GROUND FLOOR FENESTRATION SUMMARY:

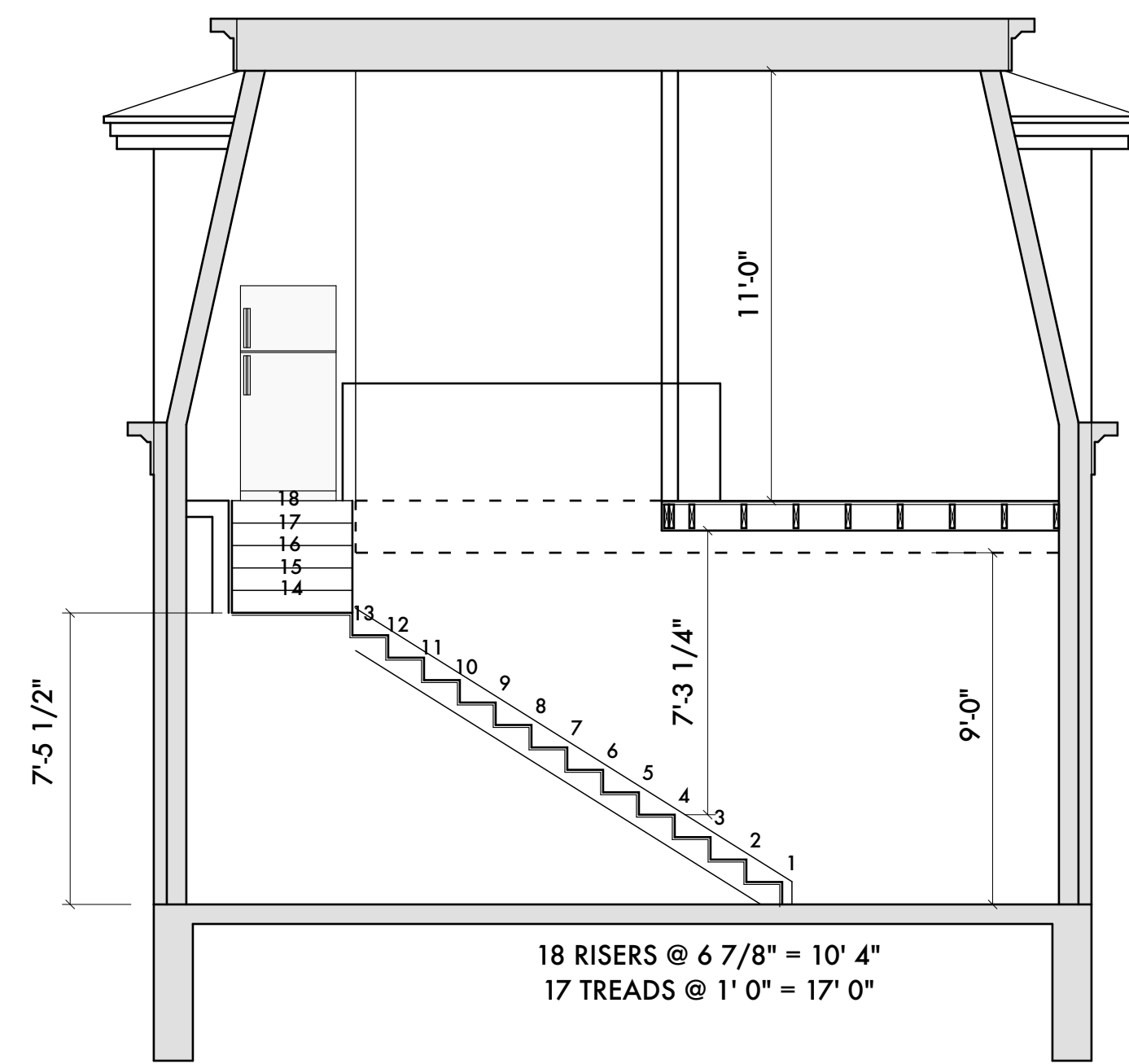
NORTH FACE
TOTAL AREA (2'-12") = 315 SF
TOTAL FENESTRATION = 150 SF

SOUTH FACE
TOTAL AREA (2'-12") = 315 SF
TOTAL FENESTRATION = 42 SF

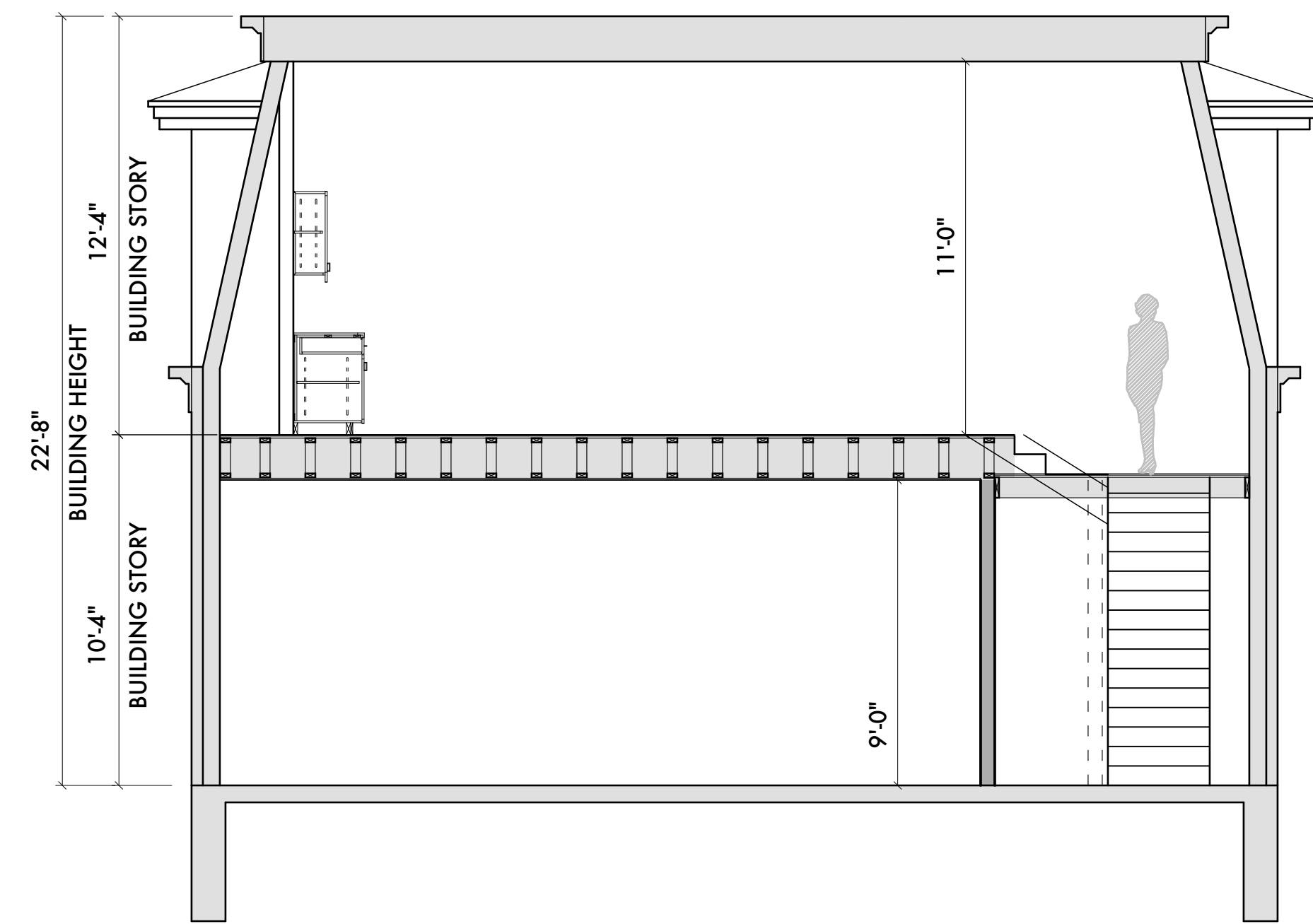
EAST FACE
TOTAL AREA (2'-12") = 236 SF
TOTAL FENESTRATION = 20 SF

WEST FACE
TOTAL AREA (2'-12") = 236 SF
TOTAL FENESTRATION = 20 SF

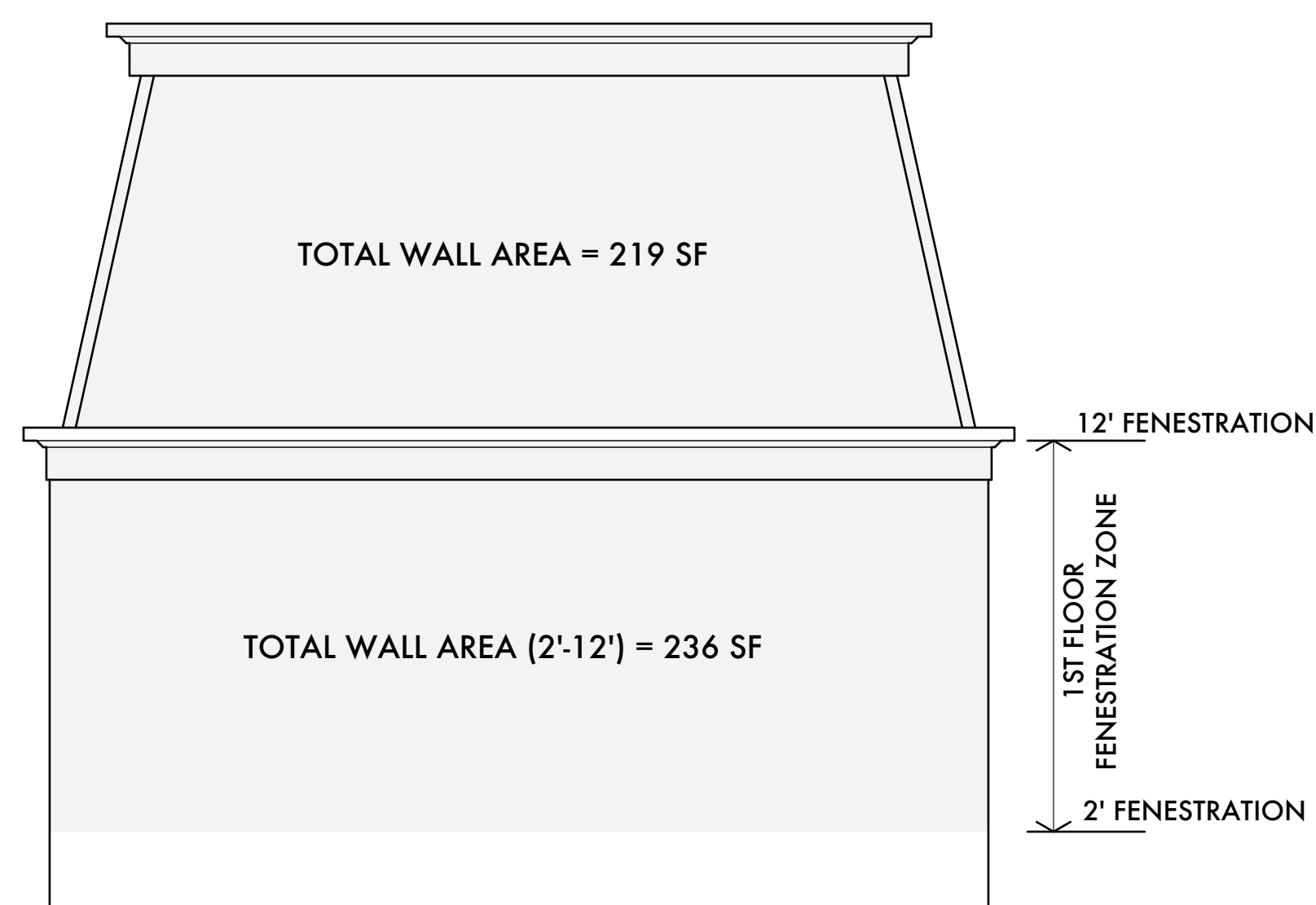
TOTAL AREA = 1,102 SF
TOTAL FENESTRATION = 232 SF
% FENESTRATION = 21.0%



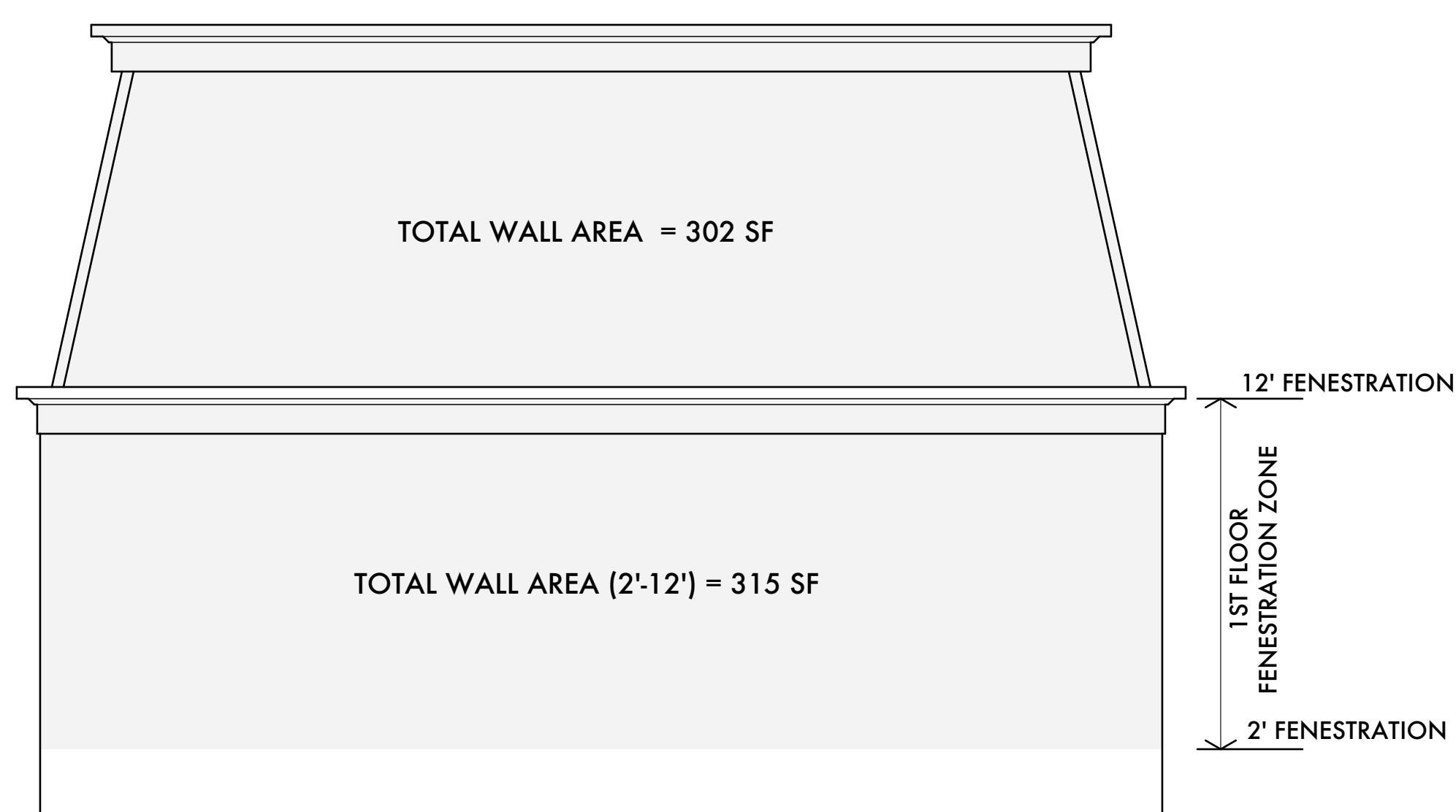
2 LONGITUDINAL SECTION AT STAIR
1/4" = 1'-0"



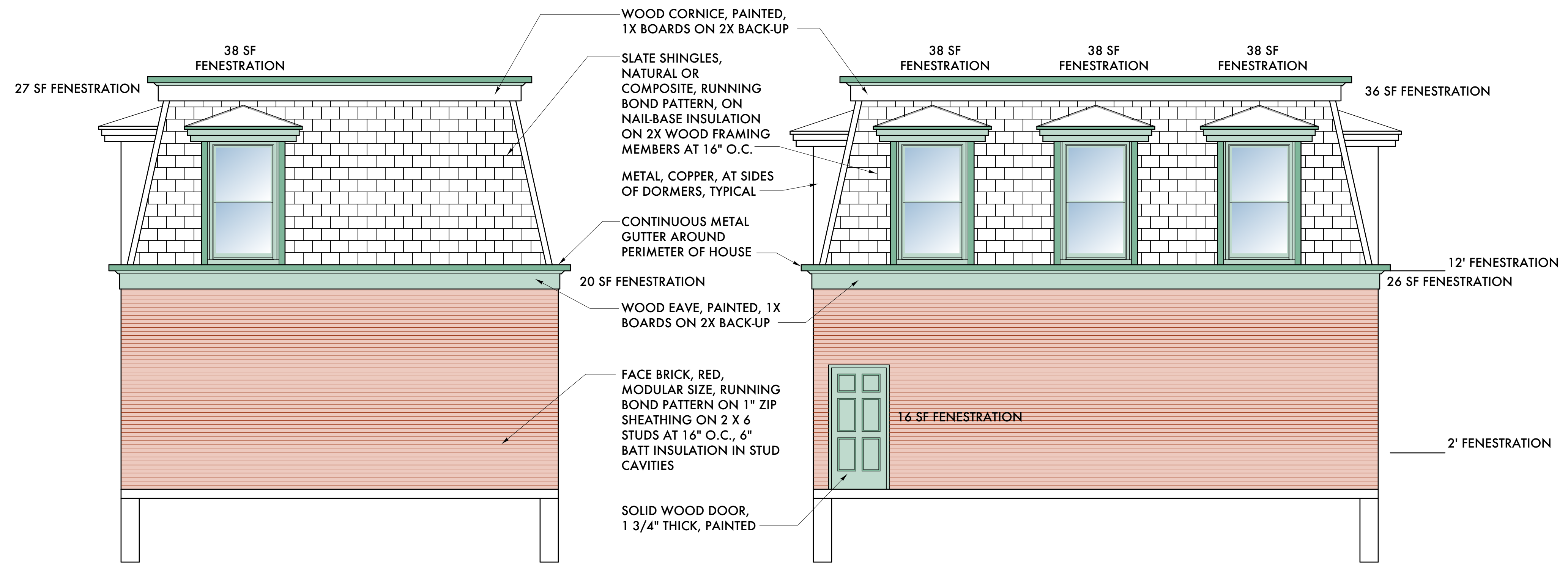
1 LONGITUDINAL SECTION AT STAIR
1/4" = 1'-0"



F EAST & WEST FENESTRATION WALL AREA
1/4" = 1'-0"

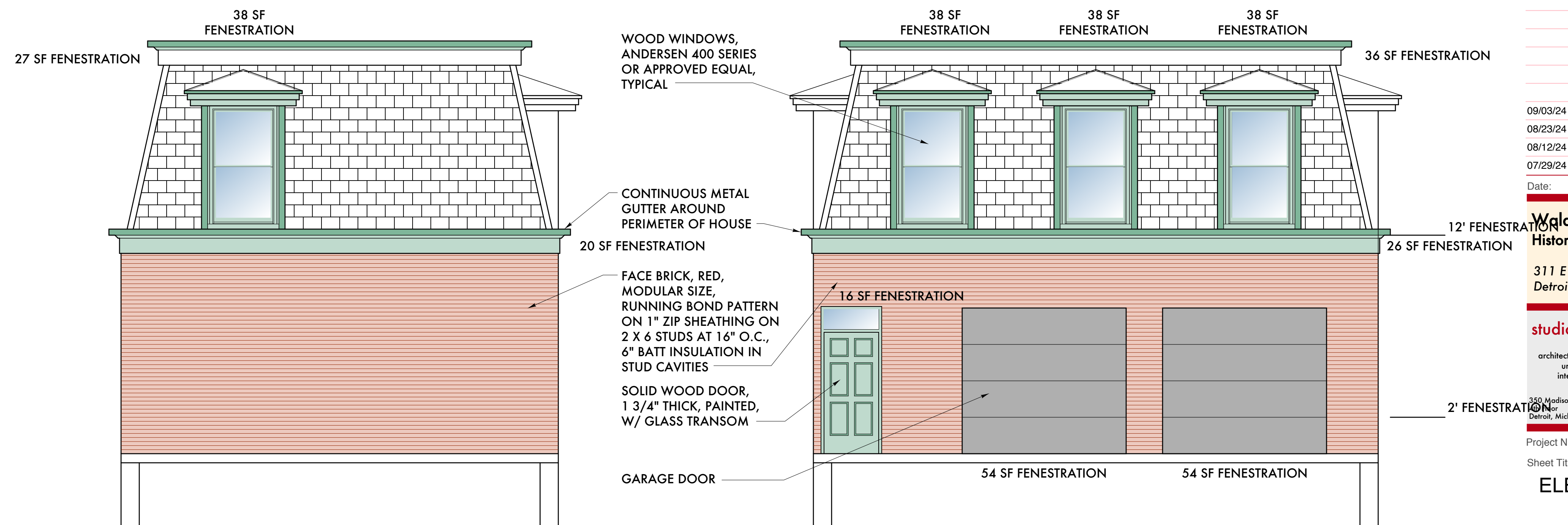


E NORTH & SOUTH FENESTRATION WALL AREA
1/4" = 1'-0"



C WEST ELEVATION
1/4" = 1'-0"

B SOUTH (YARD) ELEVATION
1/4" = 1'-0"



C EAST ELEVATION
1/4" = 1'-0"

A NORTH (ALLEY) ELEVATION
1/4" = 1'-0"



09/03/24	Zoning Approval
08/23/24	Zoning Approval
08/12/24	Historic Commission
07/29/24	Historic Commission
Date:	Issued For:
Waldhorn Residence Historic Home	
311 E Watson Detroit, Michigan 48201	
studiozONE : DETROIT	
architectural	DESIGN
urban	interior
250 Madison Avenue Detroit, Michigan 48226	studiozonedetroit.com 313.549.2790 (t) jgb@wvhouse.com

Project Number: 2024
Sheet Title:
ELEVATIONS