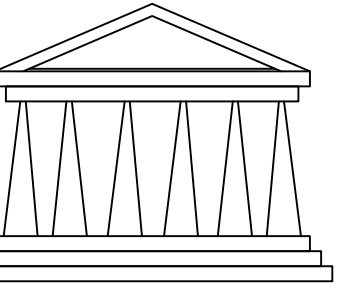


**PROPOSED  
APARTMENT  
BUILDING**

441 WEST  
WILLIS STREET  
DETROIT,  
MICHIGAN 48201

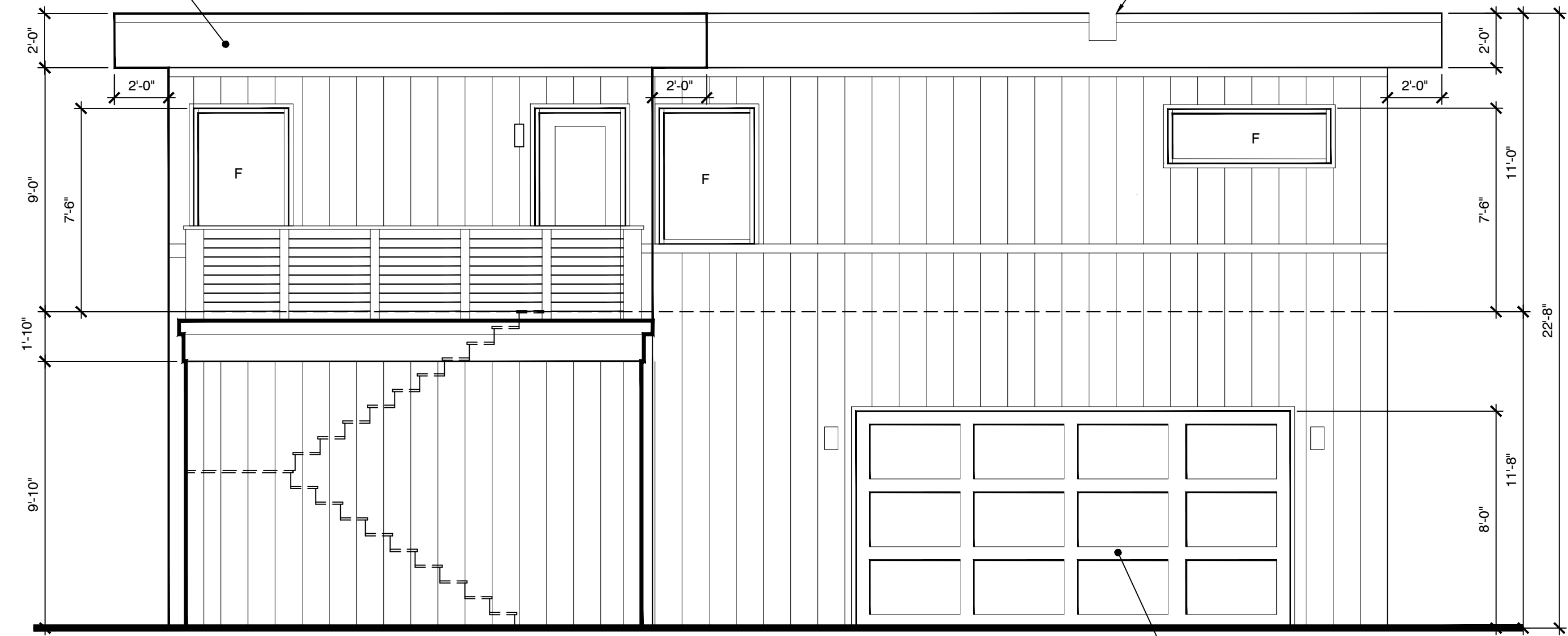


**STEVEN C. FLUM, INC.**  
architecture•urban planning

3105 Holbrook Street, Hamtramck, MI 48212  
VM: 313.831.2844 WEB: stevenflum.com

ROOF OVERHANG  
METAL FASCIA & SOFFIT

RELIEF SCUPPER



OVERHEAD SECTIONAL  
16'-0" x 8'-0" GARAGE DOOR  
w/FROSTED GLASS PANELS

**1 BUILDING ELEVATION - SOUTH**  
SCALE: 1/4" = 1'-0"

ROOF OVERHANG  
METAL FASCIA & SOFFIT

ALUMINUM CLAD WINDOW, TYP

12" VERTICAL BOARD &  
BATTEN METAL SIDING

4" METAL BAND

METAL DOWNSPOUT  
w/INTERNAL GUTTER

ELECTRICAL METERS

6" MAINTENANCE STRIP, TYP

LIGHT, TYP

CMU w/TERRAZZO POLISHED FACE  
w/RAKED CONCAVE MORTAR JOINTS

**2 BUILDING ELEVATION - EAST**  
SCALE: 1/4" = 1'-0"

© SCF, inc. MARCH 2024

REV.	DESCRIPTION	DATE
	HDC SUBMITTAL	04.22.2024
	HDC SUBMITTAL REVISION	05.21.2024

c:\FlumNew\1543...\Prop Site Pl.dwg



SHEET DESCRIPTION:  
EXTERIOR BUILDING  
ELEVATIONS - SOUTH & WEST

DRAWN: CHECKED:  
SCF

SCALE: 1/4" = 1'-0"

DATE: 19 MARCH 2024

JOB NO SHEET NO  
1622 A7.0