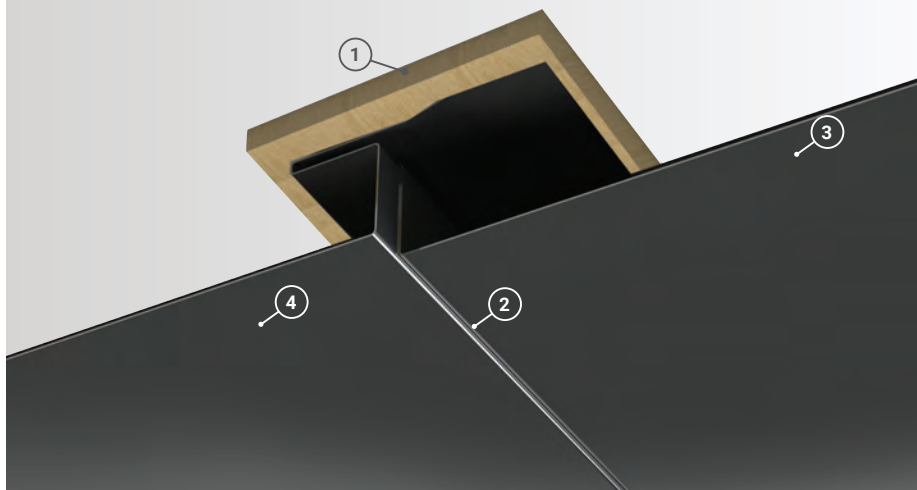


Panel Overlap Detail

- 1. Soffit Substrate:** Can be installed to wood framing, metal framing or plywood sheathing
- 2. Reveal Width:** No reveal shown, can be manufactured with up to 1" of reveal between panels in 1/4" increments.
- 3. Perforations:** Available in perforated version with air flow data available
- 4. Stiffeners:** Available in single v, double v, or no stiffener options



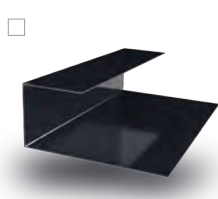
Soffit Coverage	12" or 16"
Reveal Widths	Flush to 1"
Panel Gauges	22, 24*
Fastener Options	Concealed Fastener
Panel Length	4' to 30'+
Relief Height	7/8"
Variegated Assembly	Available
Air Flow Data	Available Upon Request
Perforations	Available in 24 Gauge
Warranty	Based on Paint System
For more information	1.833.STEEL.US

* Grade 50

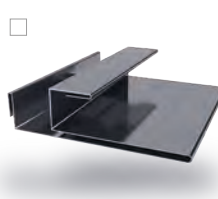
Version 5.2, 12/2021



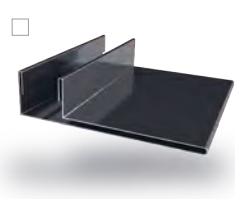
Double J Trim ***



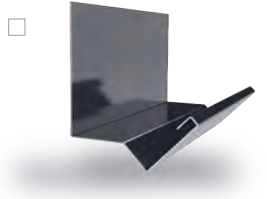
Reverse J Trim *



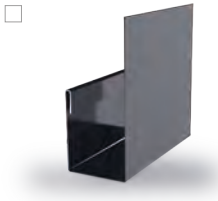
F & J Trim



F Trim



Head Trim



J Trim



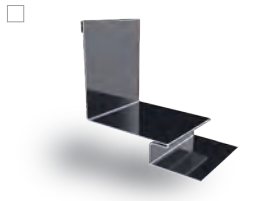
Outside Corner



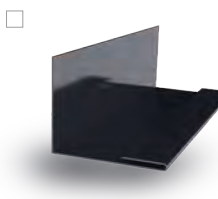
Outside Corner 2



Inside Corner



Inside Corner 2



Inside Corner Closure



Fascia



H Trim **

Additional Trim Profiles Available By Request

* Used with Outside & Inside Corner 2 and H Trim
** Used with Reverse J Trim
*** Color On Both Sides

