

**ATTACHMENT A:**

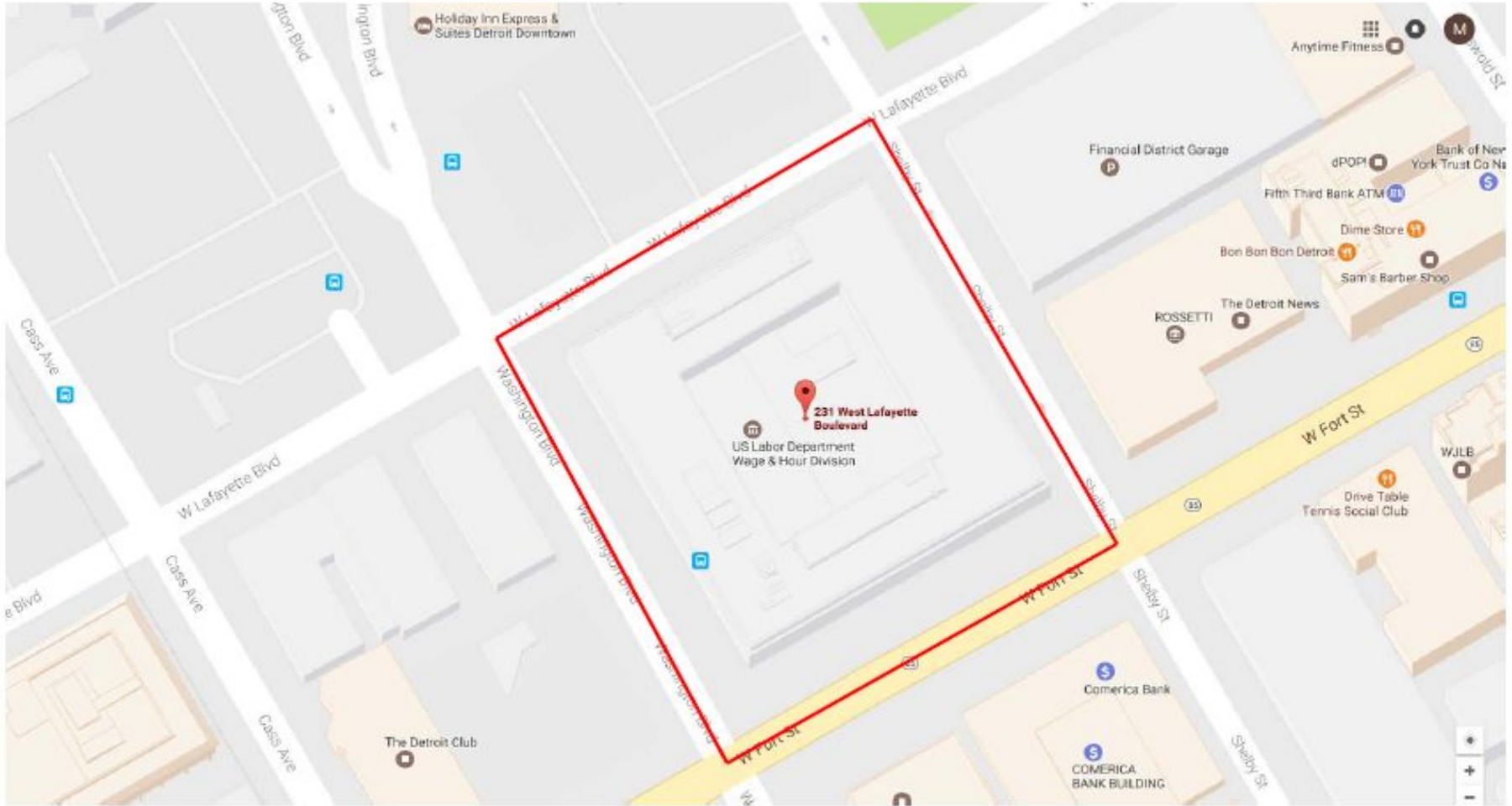
Section 106 Submission for the  
Theodore Levin U.S. Courthouse  
Capital Security and Accessibility Improvement Project  
Detroit, MI

Project Submission  
January 2023

# Theodore Levin US Courthouse

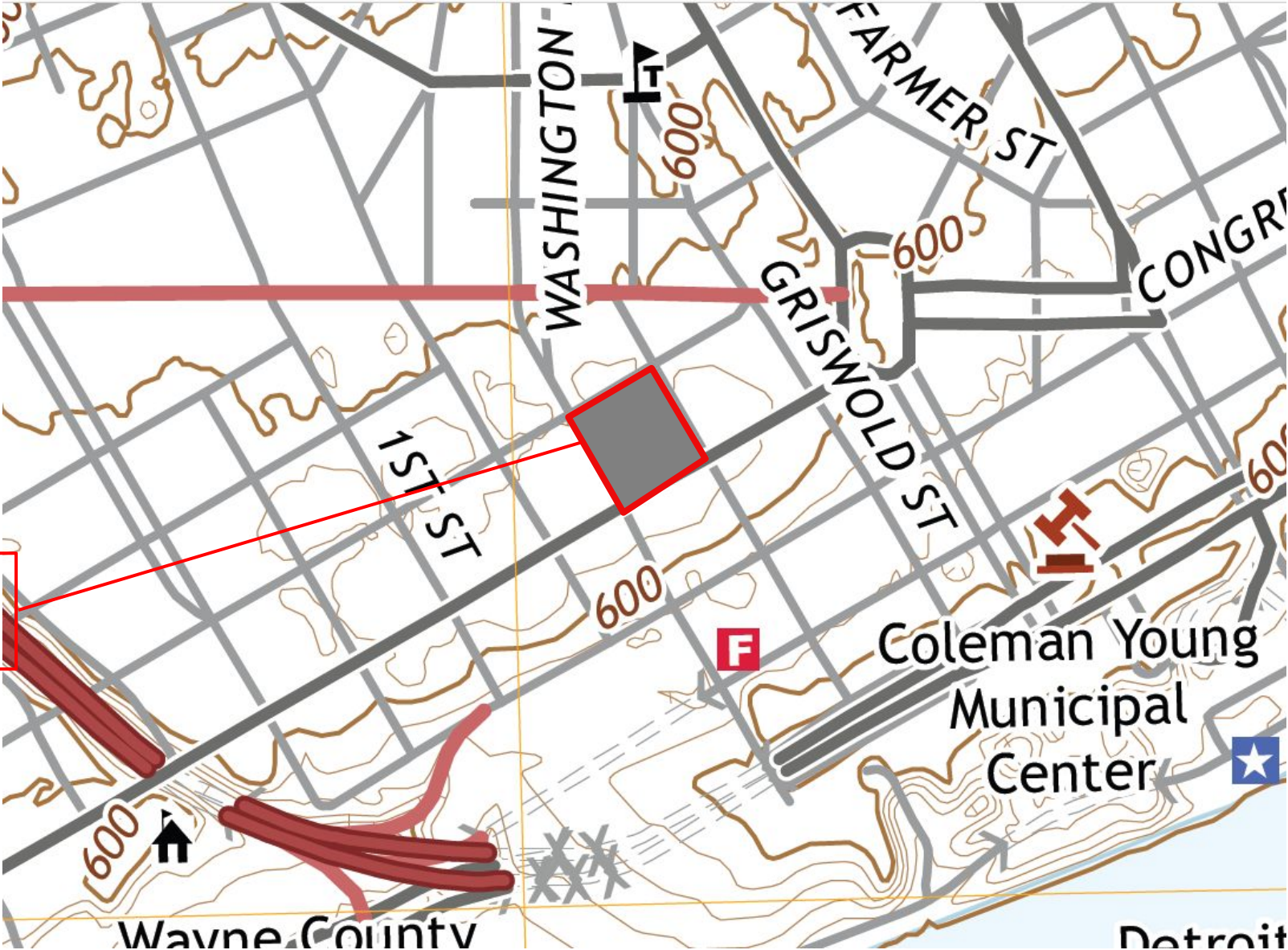


# Area of Potential Effect (APE)

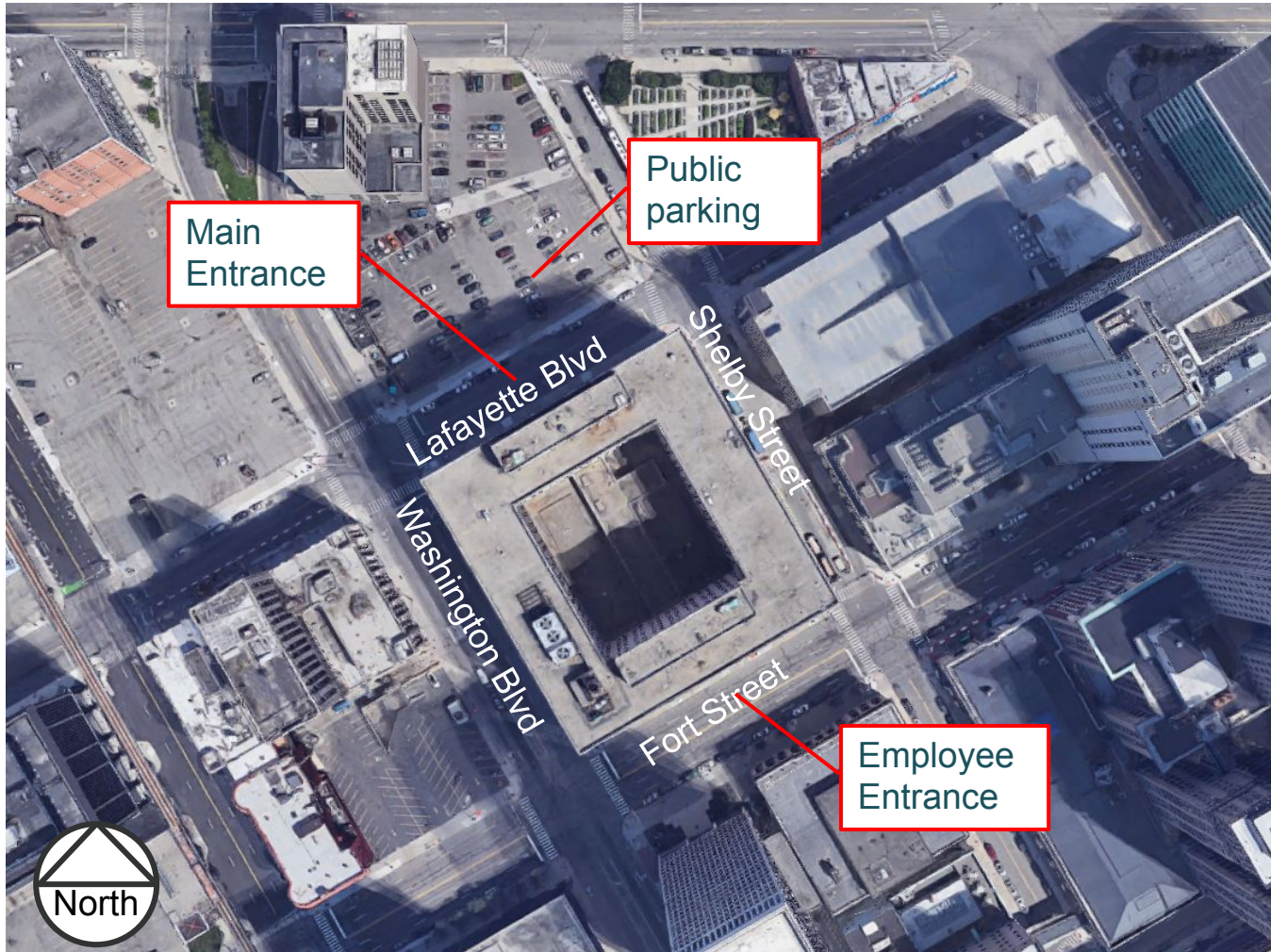


APE -

# Topographic Map



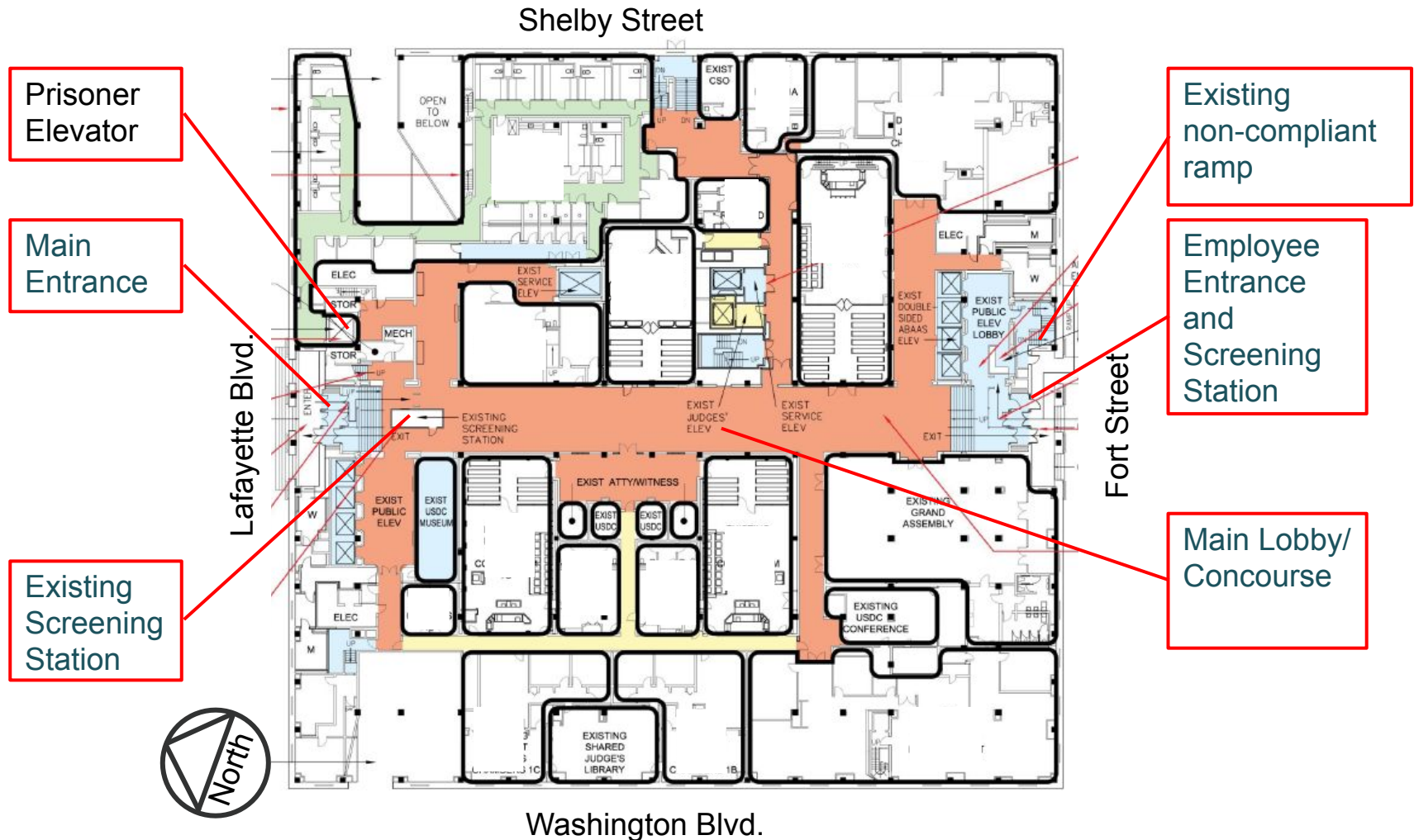
# Site Plan



# Project Objectives

- Update and relocate the security screening stations at both primary public building entrances of the Theodore Levin United States Courthouse (Levin USCH).
- Install compliant accessibility access off Lafayette Street
- Construct a Sally Port in the basement
- Modify areas of the second floor for tenant improvement and prisoner transport.

# First Floor: Entry Security, Existing Configuration



# Lafayette Blvd. Entrance Existing Condition Images



# Lafayette Blvd. Entrance - Existing Conditions



Main Entrance

# Lafayette Blvd. Entrance - Existing Conditions



Main Entrance - Stairs and Portico

# Lafayette Blvd. Entrance - Existing Conditions



Main Entrance - Stairs and Portico (close up)

# Lafayette Blvd. Entrance - Existing Conditions



Main Entrance - Looking towards Washington Blvd & Lafayette Blvd Intersection

# Lafayette Blvd. Entrance - Existing Conditions



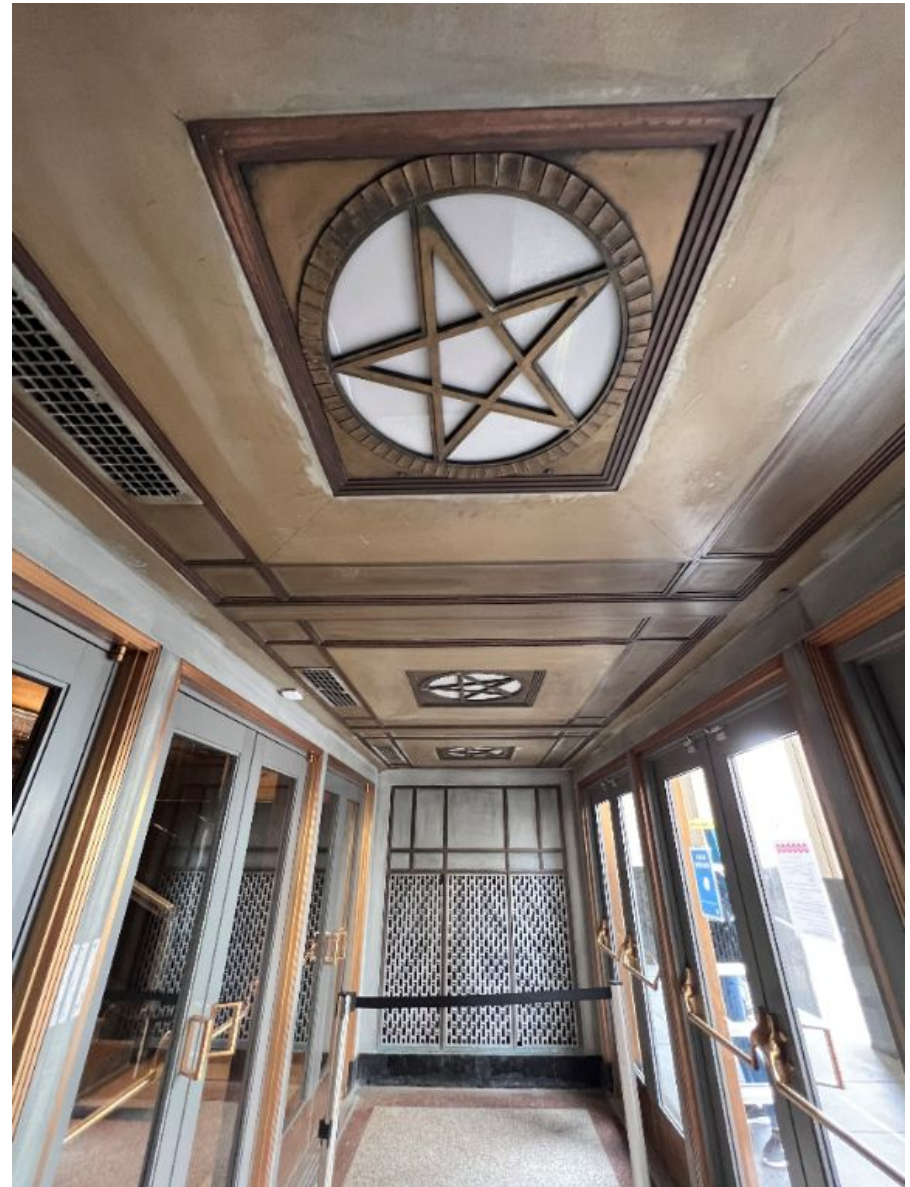
Main Entrance - Looking East along Lafayette Blvd towards Shelby Street

# Lafayette Blvd. Entrance - Existing Conditions



Main Entrance - Image within portico looking East

# Lafayette Blvd. Entrance - Existing Conditions



Entry Vestibule - Image (left) - End panel/grate to be removed for wheelchair lift access, Image (right) existing to remain.

# Lafayette Blvd. Entrance - Existing Conditions



Main Entrance - Building Interior - Image taken mid stair, existing screening station to the right.



## Lafayette Blvd. Entrance - Existing Conditions



Main Entrance - Building Interior - Image taken mid stair, existing screening station to the right.

# Lafayette Blvd. Entrance - Existing Conditions



Main Entrance - Image of existing screening station and lobby concourse beyond.

# Lafayette Blvd. Entrance - Existing Conditions



Main Entrance - Looking from concourse towards entry doors.

# Lafayette Blvd. Entrance

## Existing Security Screening Configuration



Main Exit  
(behind)

Elevator  
lobby

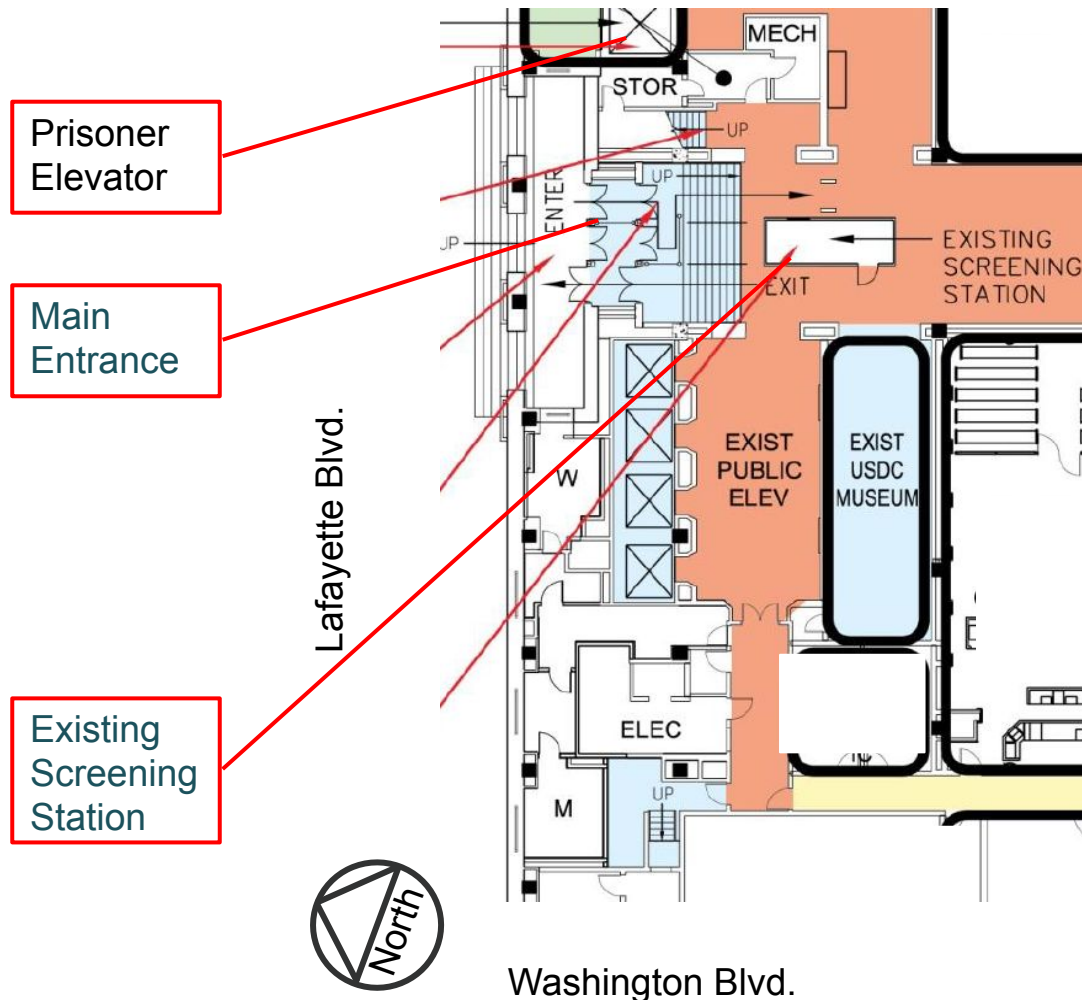
Non-  
compliant  
screening  
station

Main lobby

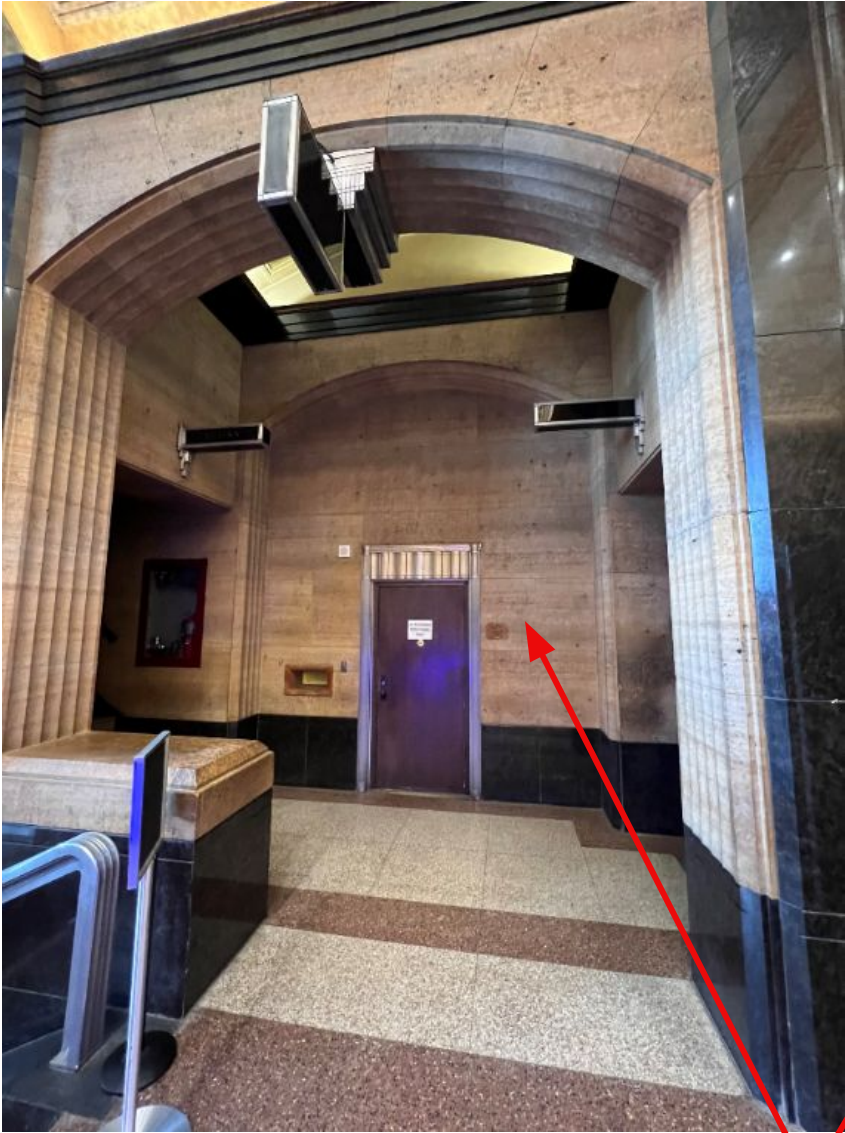
Main  
Entrance-  
lower  
elevation

Limited  
queuing  
area

# Lafayette Blvd. Entrance Existing Security Screening Configuration



# Lafayette Blvd. Entrance - Proposed Project Area



Wall to be modified for screening station access.  
New gun locker location.

# Lafayette Blvd. Entrance - Proposed Project Area



Main Entrance - Looking from proposed new screening area towards existing screening booth and entry doors.

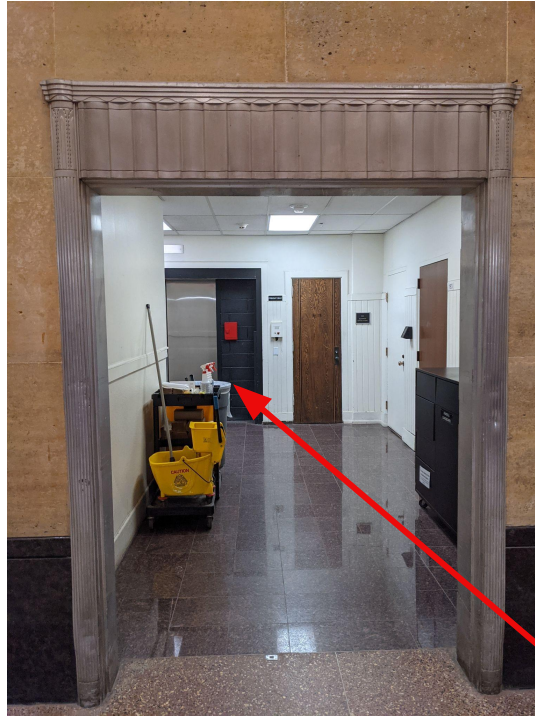
# Lafayette Blvd. Entrance - Proposed Project Area



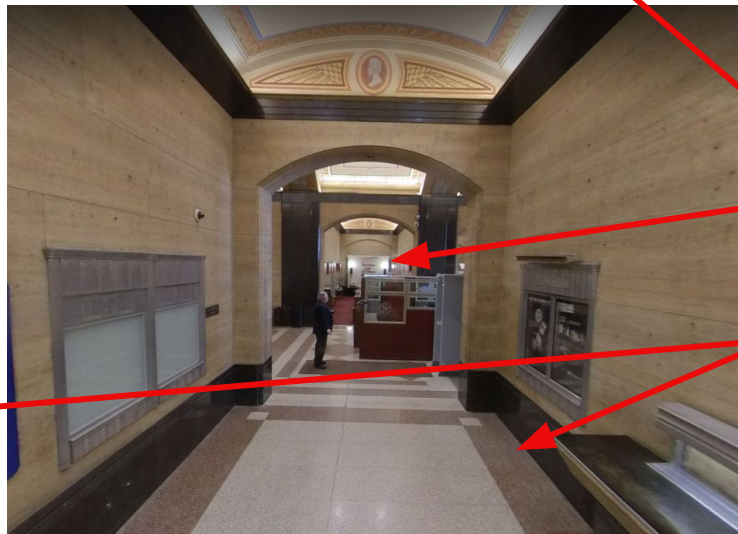
Proposed modifications to these existing storage closets include removing walls and modifying the floor to accept the new wheelchair lift and opening to new screening area.



# Lafayette Blvd. Entrance - Proposed Project Area



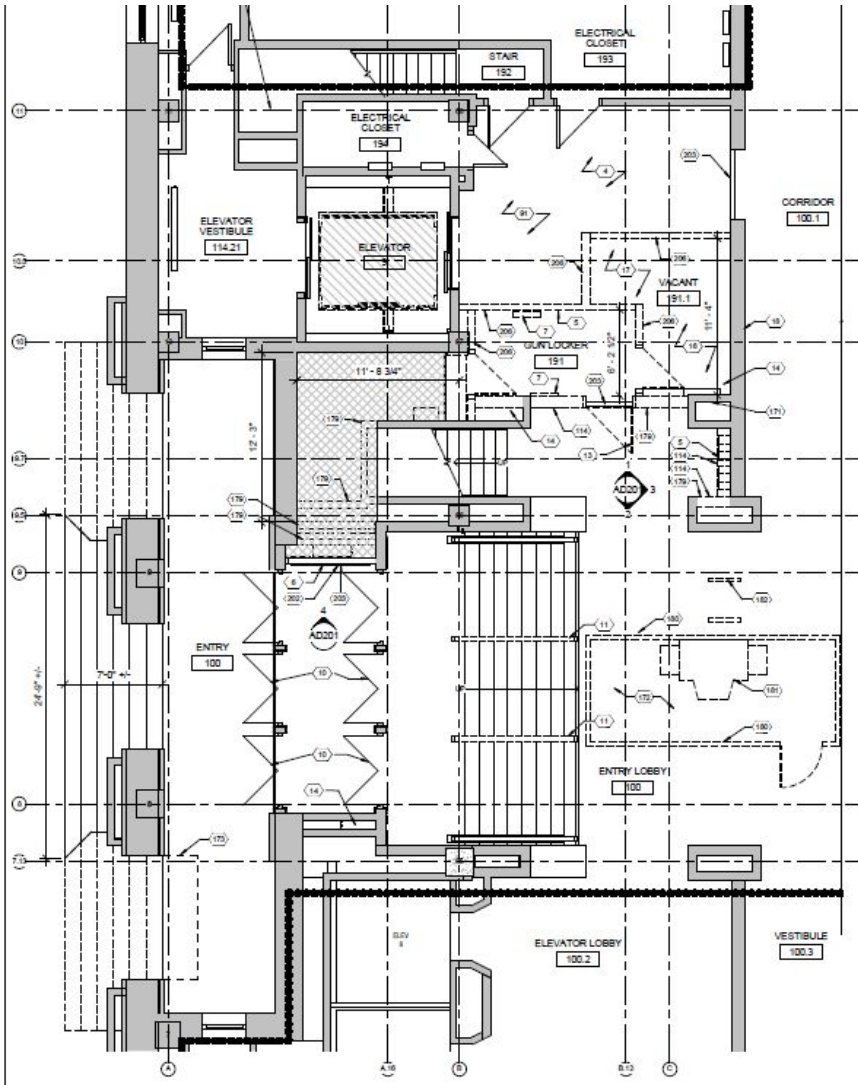
Existing utility and elevator area will be modified to accommodate the new screening station. Visitors will exit the station back into the original concourse through an adjacent corridor.



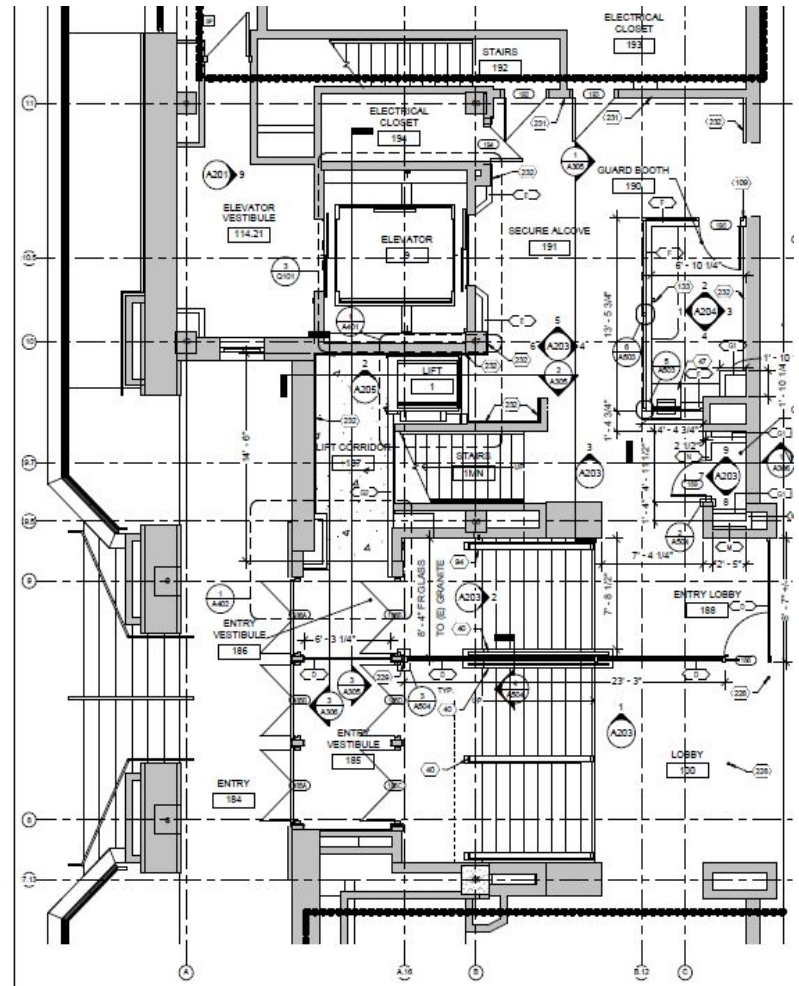
Utility Space  
Concourse  
beyond  
Connecting  
Corridor

# Lafayette Blvd. Entrance Proposed Changes

# Lafayette Blvd. Entrance - Security Screening Station Proposed First Floor Modifications



Proposed - Demolition Plan



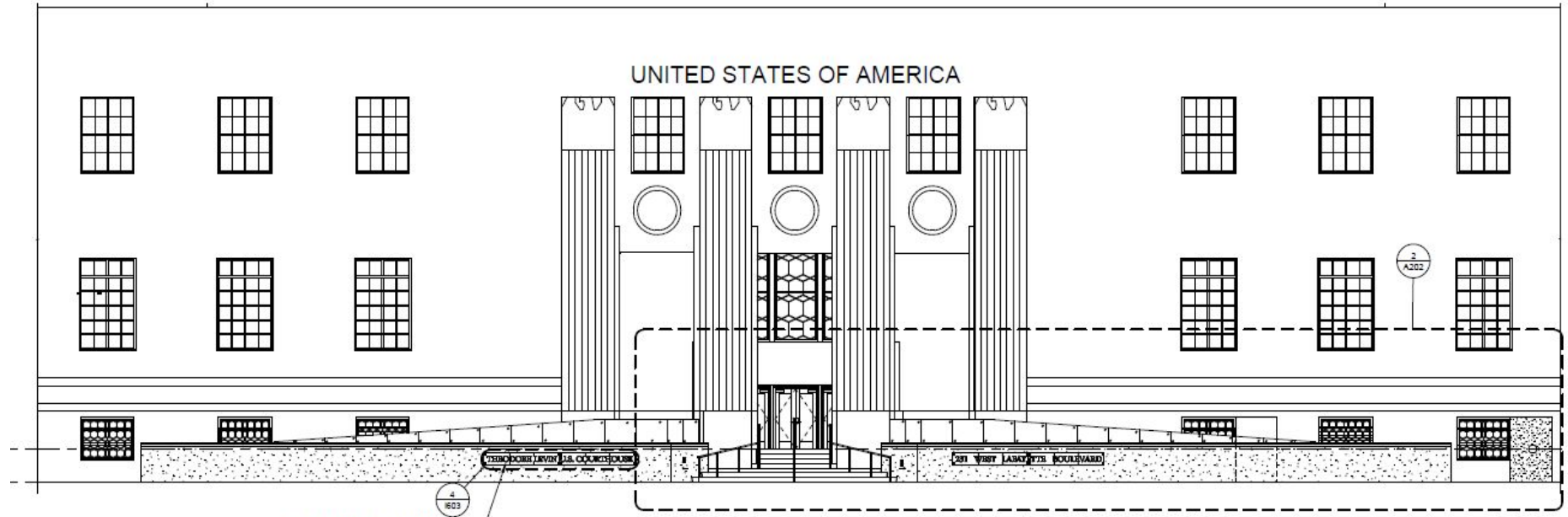
Proposed - New Screening Station  
Layout & Lobby Modifications

# Lafayette Blvd. Entrance - Proposed Accessibility Modifications

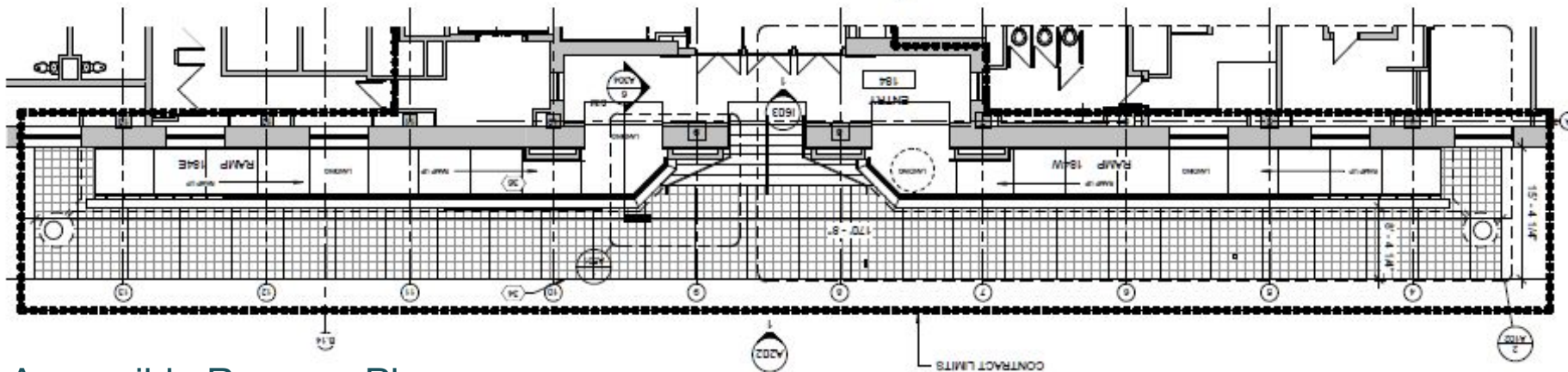


Please Note that the stairs are not longer being shifted forward per this rendering. See Drawings for more accurate layout.

# Lafayette Blvd. Entrance - Proposed Accessibility Modifications



Accessible Ramps - Elevation

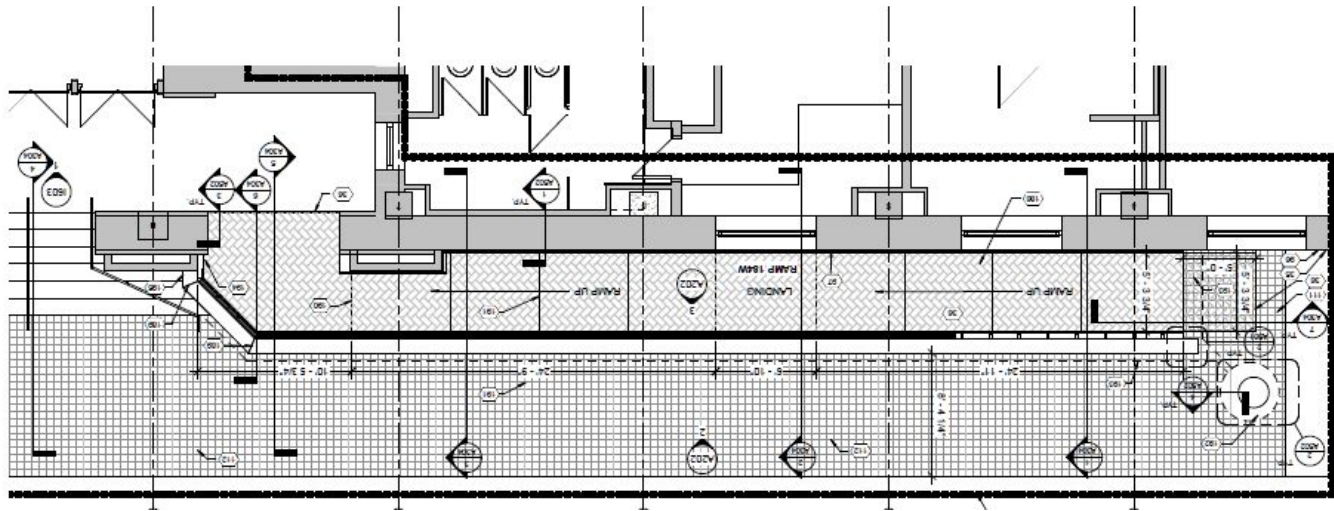


Accessible Ramps - Plan

# Lafayette Blvd. Entrance - Proposed Accessibility Modifications



Stair and Ramp  
Connection - Axon



Ramp Enlarged View

# Fort Street Entrance Existing Condition Images

# Fort Street Entrance - Existing Conditions



Employee/Accessible Entrance

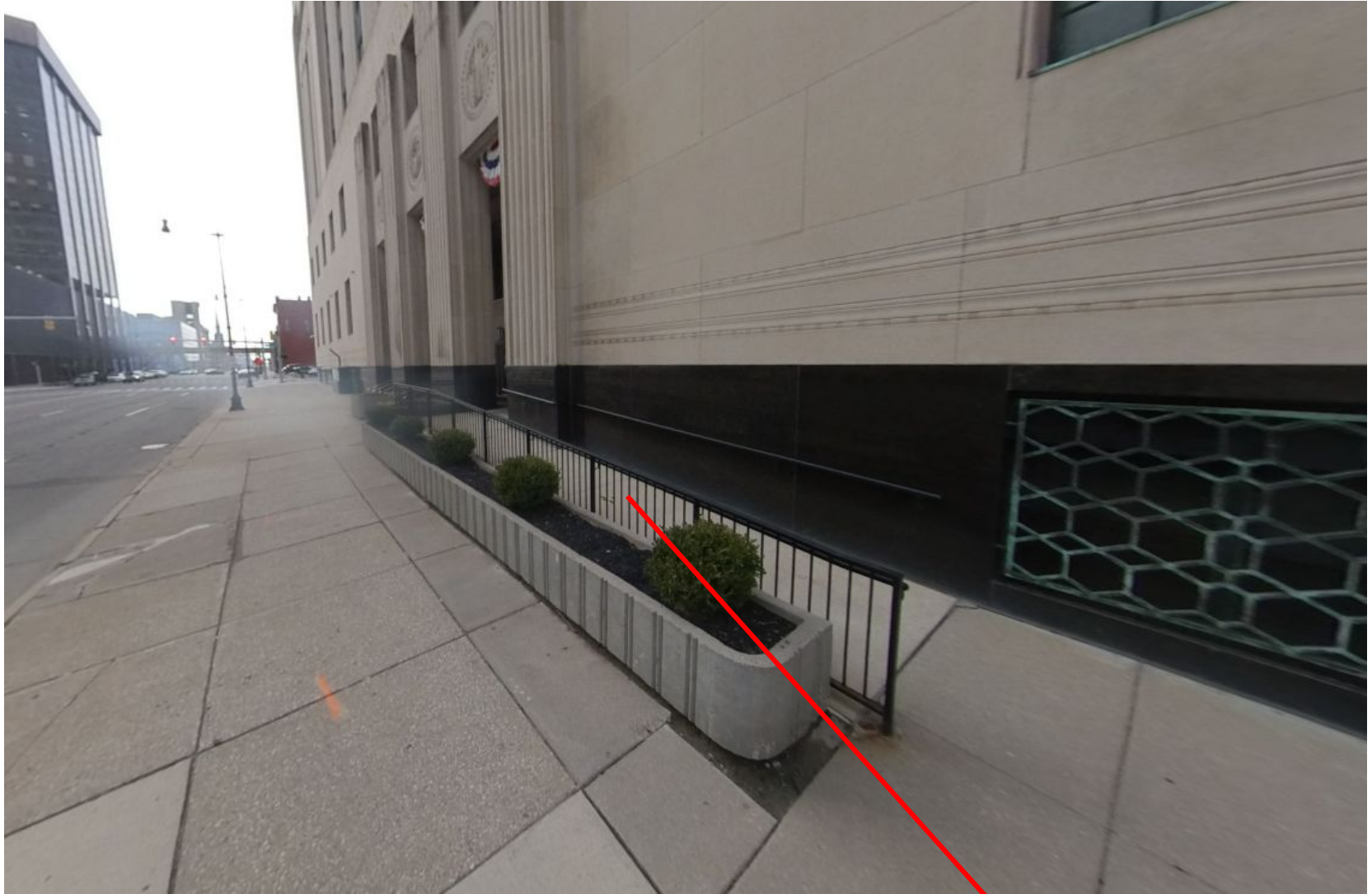


# Fort Street Entrance - Existing Conditions



Employee/Accessible Entrance - Continued

# Fort Street Entrance - Existing Conditions



Existing Accessible Ramp - View looking towards Washington Blvd. intersection

Existing  
Non-Compliant  
Ramp

# Fort Street Entrance - Existing Conditions

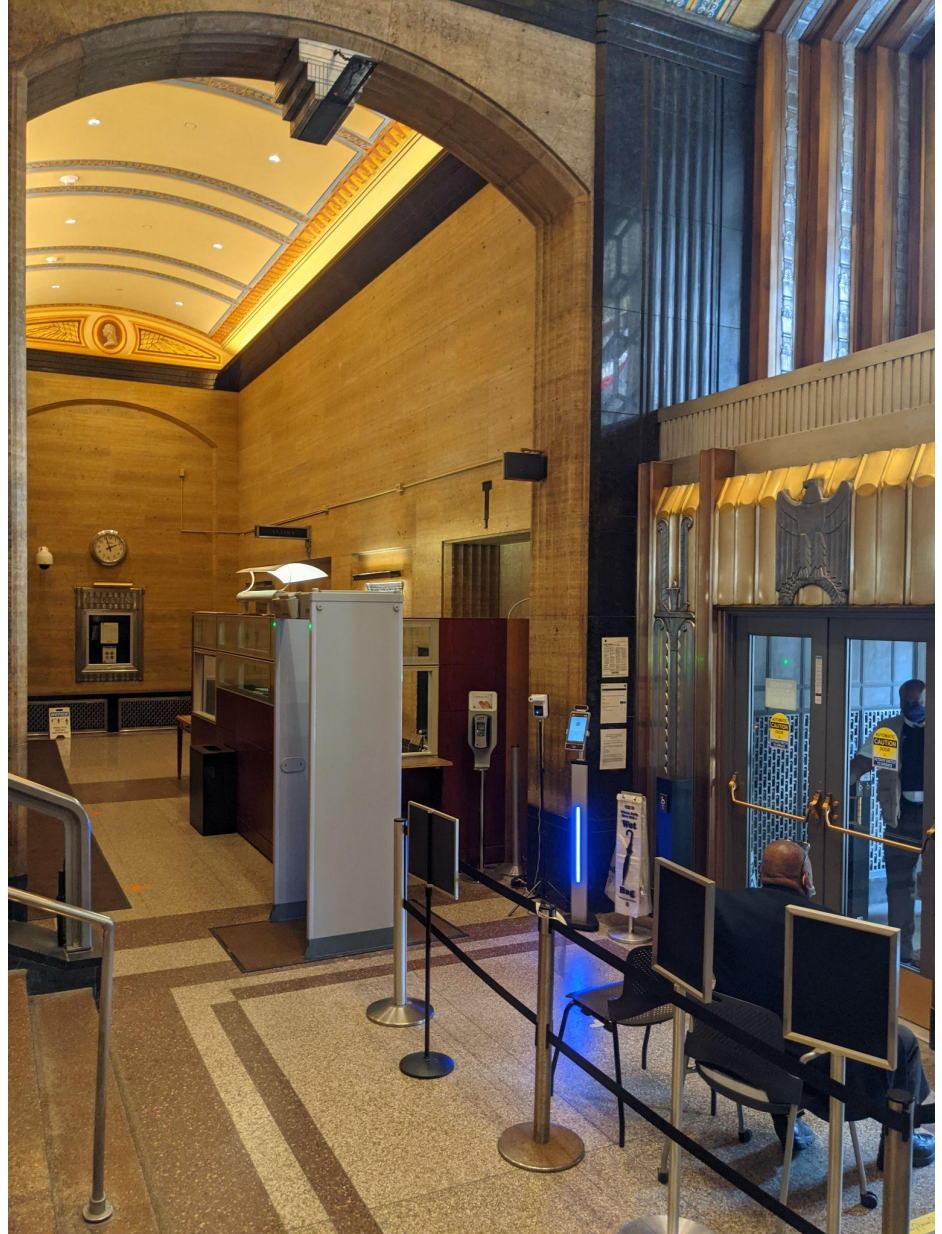


Employee Entrance - Image within portico looking West & within entry vestibule looking East. Note: grilles removed for study. Fort St. vestibule will not be impacted by project.

# Fort Street Entrance - Existing Conditions



Building Interior -  
existing  
screening station  
and door  
configuration

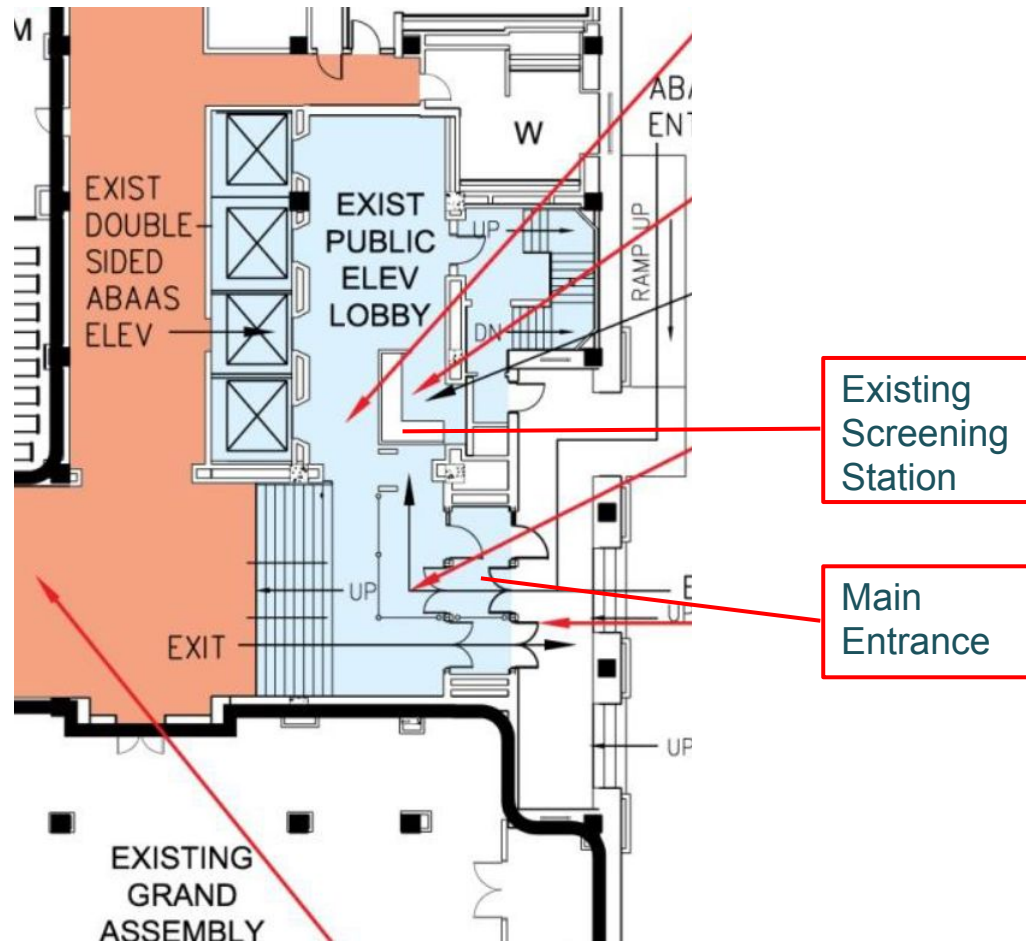


# Fort Street Entrance - Existing Conditions



# Fort Street Entrance

## Existing Security Screening Configuration



# Fort Street Entrance - Existing Conditions



Elevator lobby

Non-compliant screening station

Stairs to Main lobby

Employee Entrance

Limited queuing area and separation from Exit

Main Exit

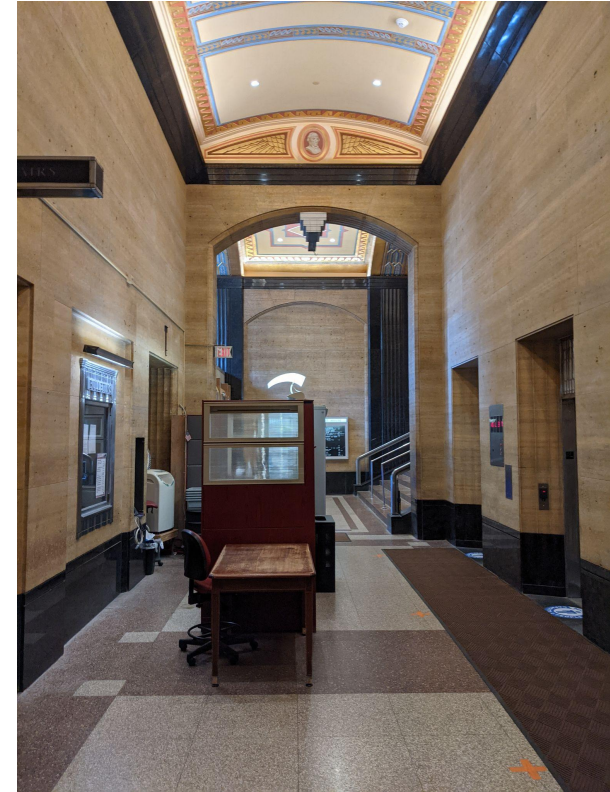
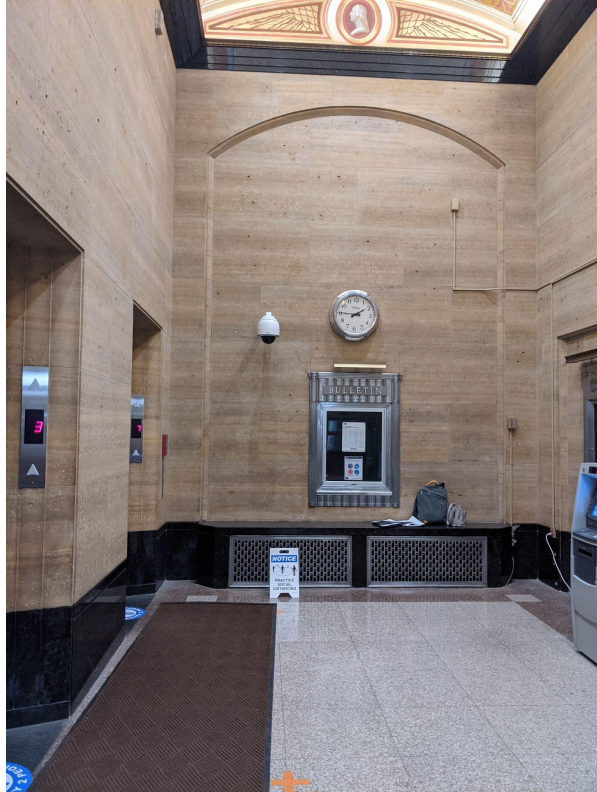
# Fort Street Entrance - Existing Conditions



Employee Entrance - Building Interior - existing screening station and elevator bank.



# Fort Street Entrance - Existing Conditions

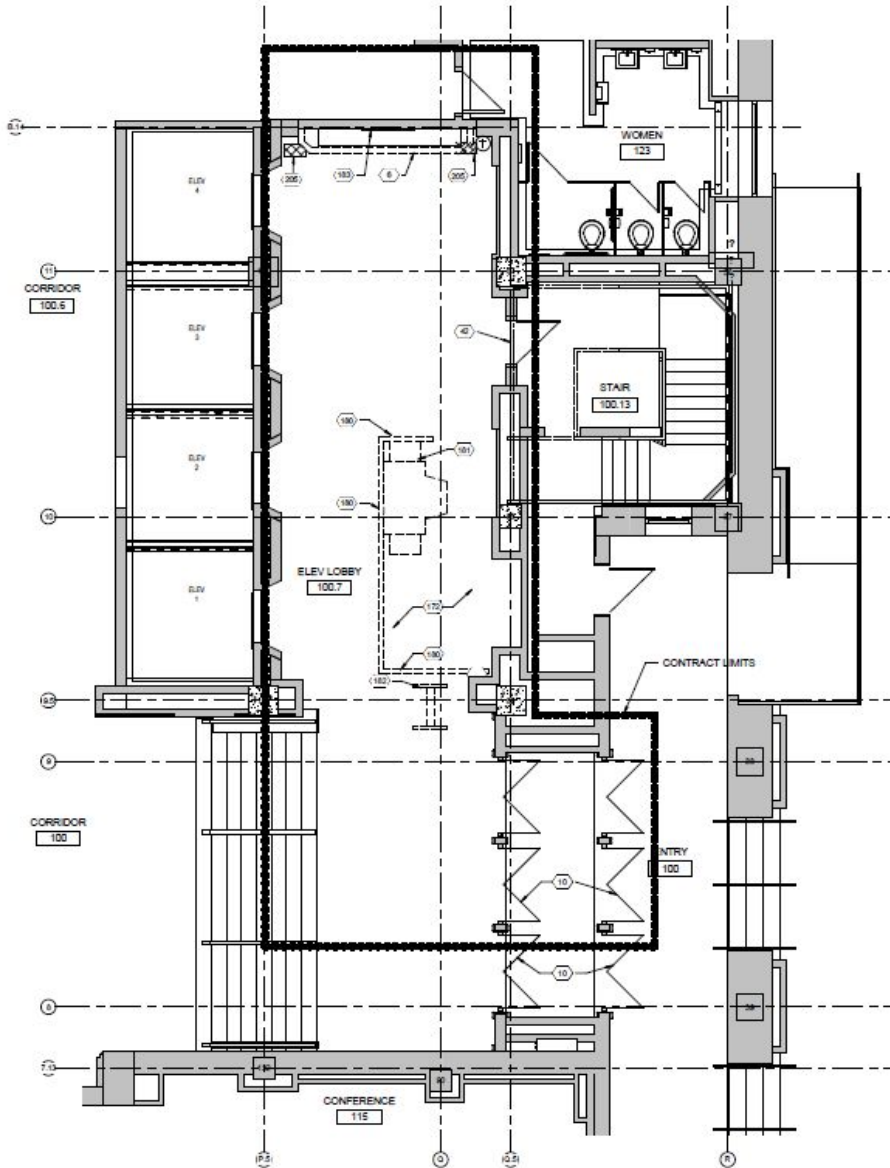


Building Interior - existing (and proposed) screening station location across from elevators.

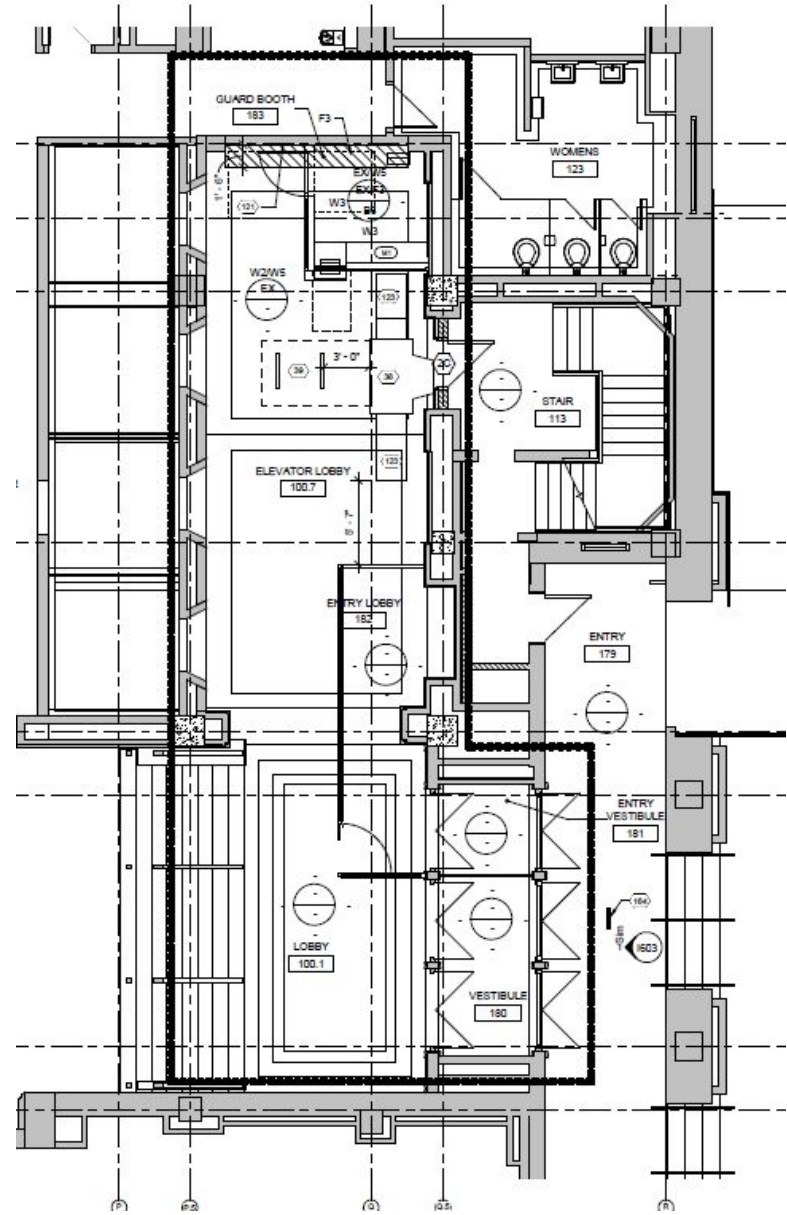
# Fort Street Entrance Proposed Changes

# Fort Street Entrance - Security Screening Station

## Proposed First Floor Modifications



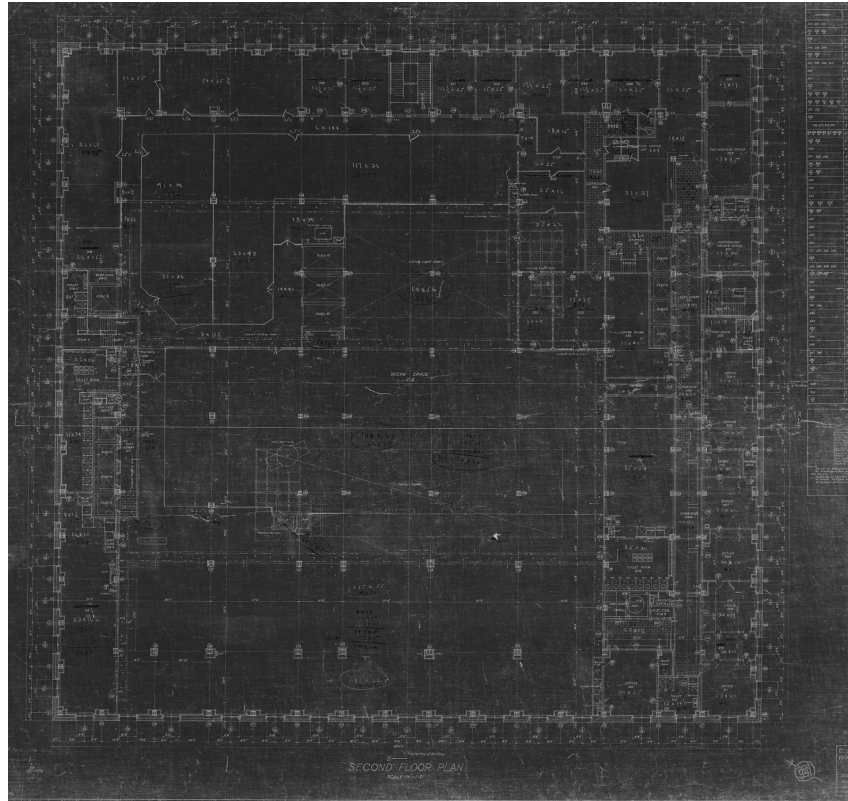
Demolition Plan



New Screening Station Layout

# Second Floor Tenant Modifications Proposed Changes

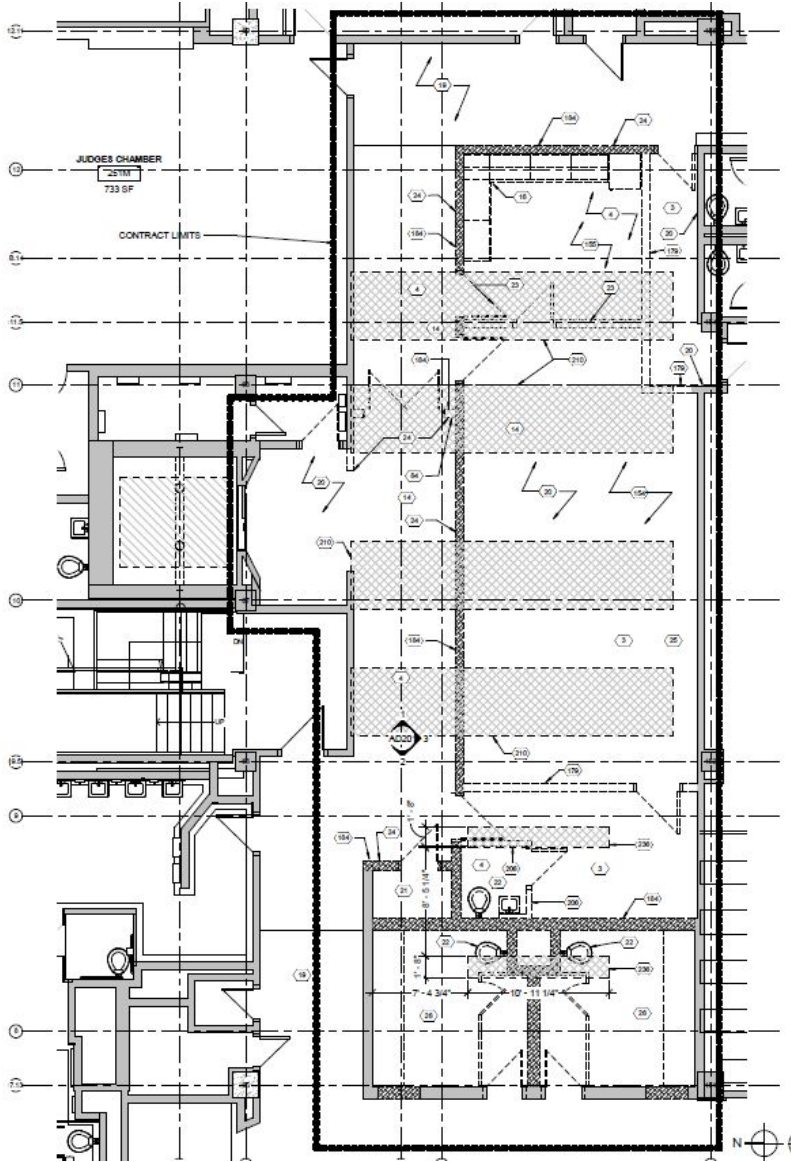
# Second Floor - Original Layout



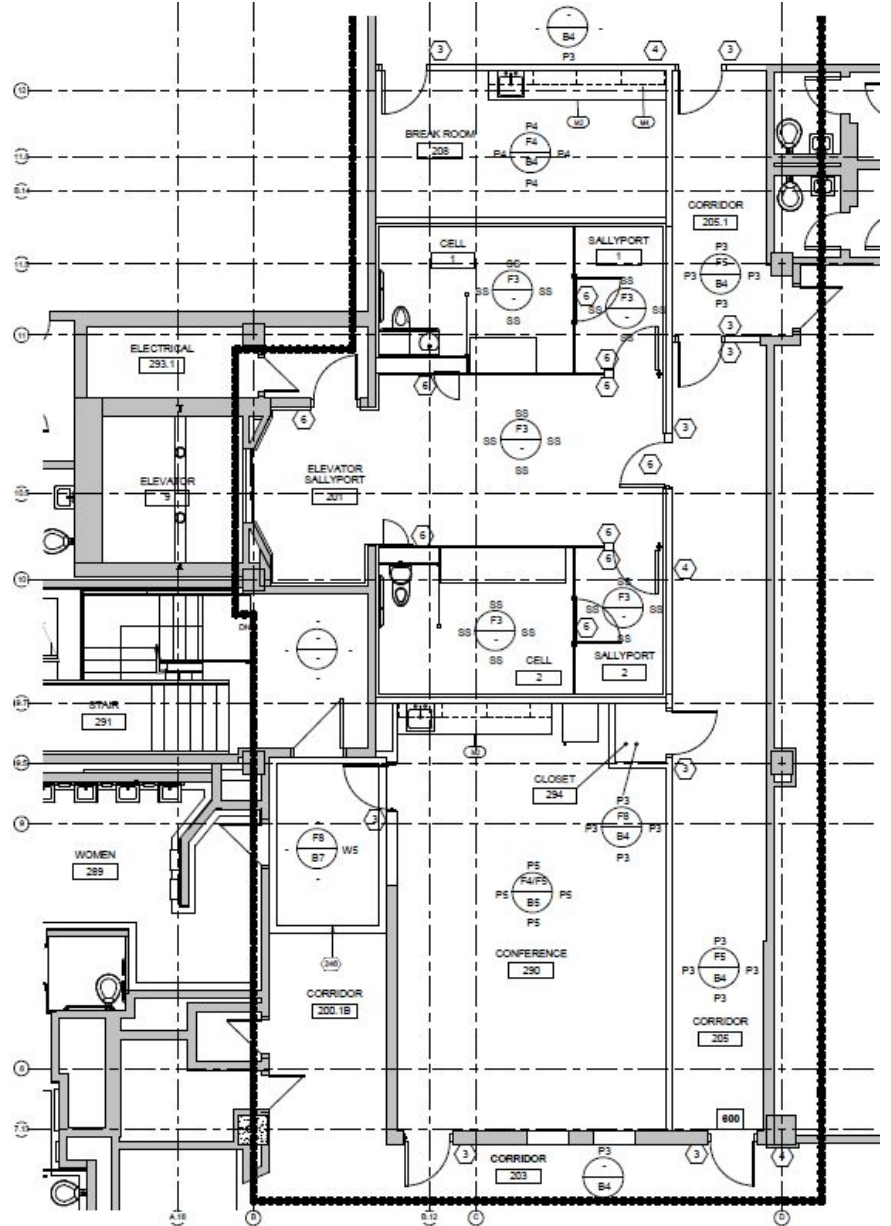
Original Layout was heavily modified when the post office moved out in the 1960's



# Second Floor



Existing Condition & Demolition Plan



Proposed Second Floor Tenant Layout

Please see drawings for sally port  
information