

THE TRENDS 700 SERIES

Single Hung Replacement Windows



DUAL PANE

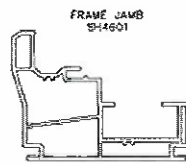
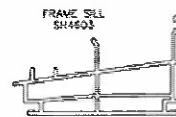
INTERCEPT
SPACER

INTELLIGLASS
LOW-E

● Standard ● Option

STANDARD FEATURES

- **Multi-Chambered 2-7/8" beveled fusion welded PVC frame and sash** provide lasting, low-maintenance beauty.
- **3/4" Intercept warm-edge insulating glass** is the foundation of thermal performance and comfort.
- **BioMaxx composite sweep locks** are lead free and nest securely into the tamperproof retainer.
- **Full overlap interlock and mylar fin synthetic weatherstripping** at meeting rail keep out drafts.
- **Sloped sill** efficiently diverts water away from the interior.
- **Integral extruded lift rail** will never pull loose for assured confidence in operation and function.
- **Stainless steel constant force balance system** and metal on metal pivot bar system keeps the sash aligned and moves with minimal force.
- **Recessed tilt latches** release the sash for trouble-free cleaning of both sides of the glass.
- **Included half screen** features BetterVue mesh.
- **Optional IntelliGlass Low E glass** with argon gas fill heightens energy efficiency.
- **Non-Prorated Limited Lifetime Warranty** covers vinyl, glass, screens and hardware for as long as you live in your home and is transferable.



SIZE LIMITS

	Width	Height	UI*
Minimum	12"	22"	34
Maximum	52"	98"	150

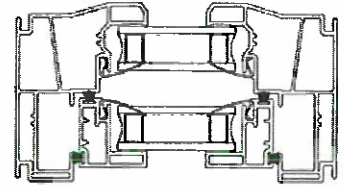
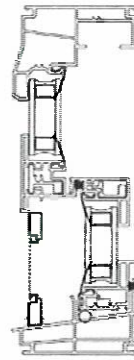
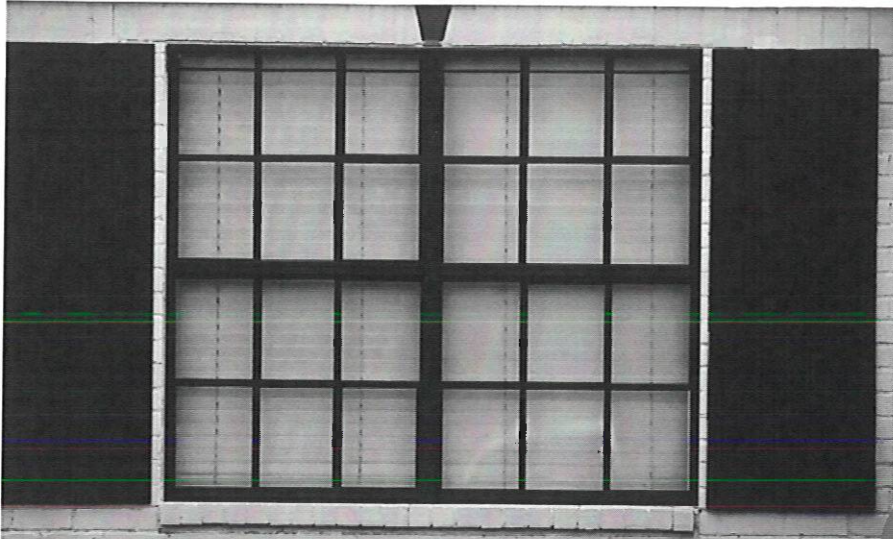
*United Inches = Width + Height

vinylmax
windows



2921 McBride Court
Hamilton, OH 45011
(800) 847-3736
vinylmax.com

CROSS SECTIONS

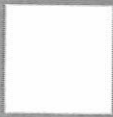


BLACK LAMINATE

ENDLESS STYLE OPTIONS

CHOOSE YOUR PERFECT LOOK

VINYL COLOR



White

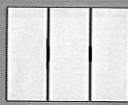


White Interior/
Black Laminate
Exterior

MATCHING STYLES



2 Lite Slider



3 Lite Sliders

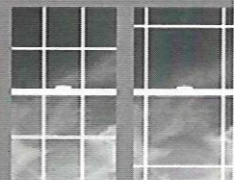


Fixed



Geometrics

GRIDS



Colonial Perimeter

PROVEN PERFORMANCE

THERMAL

No Grids

With Grids

TC700 Single Hung	U-Value	SHGC	VLT	U-Value	SHGC	VLT
Clear Glass	.49	.65	.66	.49	.58	.59
IntelliGlass Low E / Argon	.31	.30	.54	.31	.27	.48
IntelliGlass X Low E / Argon	.30	.23	.51	.30	.21	.46
TC750/TC753 Trends Slider	U-Value	SHGC	VLT	U-Value	SHGC	VLT
Clear Glass	.48	.65	.66	.48	.58	.59
IntelliGlass Low E / Argon	.30	.30	.54	.30	.27	.48
IntelliGlass X Low E / Argon	.30	.23	.51	.30	.21	.46
TC770 Trends Picture Window	U-Value	SHGC	VLT	U-Value	SHGC	VLT
Clear Glass	.47	.67	.69	.47	.61	.62
IntelliGlass Low E / Argon	.28	.31	.56	.28	.28	.51
IntelliGlass X Low E / Argon	.28	.24	.54	.28	.22	.48

STRUCTURAL

Product Rating	Up to this size window*	Design Pressure PSF	Glass Strength	Reinforcement Configuration
Single Hung	44" x 72"	25	SS	None
	48" x 60"	30	SS	Lock and Meeting Rail
	40" x 63"	50	DS	Full
Slider	72" x 48"	30	SS	Lock and Meeting Rail
	71" x 55"	30	DS	Lock and Meeting Rail
	72" x 48"	50	DS	Full
PW	48" x 72"	50	DS	None
	60" x 84"	50	3/16"	None

83327.01-501-.47

A9904.02-116-45

The lower the **U-value**, the greater a window's resistance to heat flow and the better its insulating value.

The lower the **SHGC**, the more a product is blocking solar heat from coming through the window.

VLT - Visible Light Transmittance - lower values mean less light passing through the window.

*windows outside these size limits have not been structurally tested

vinylmax
windows



2921 McBride Cour
Hamilton, OH 4501'
(800) 847-3736
vinylmax.com

WINDOW+DOOR
TOP 100
MANUFACTURERS



FGIA
Fenestration & Glazing
Industry Alliance

