

**Detroit Music Hall Expansion** | Center for the Performing Arts

HISTORIC PRESENTATION

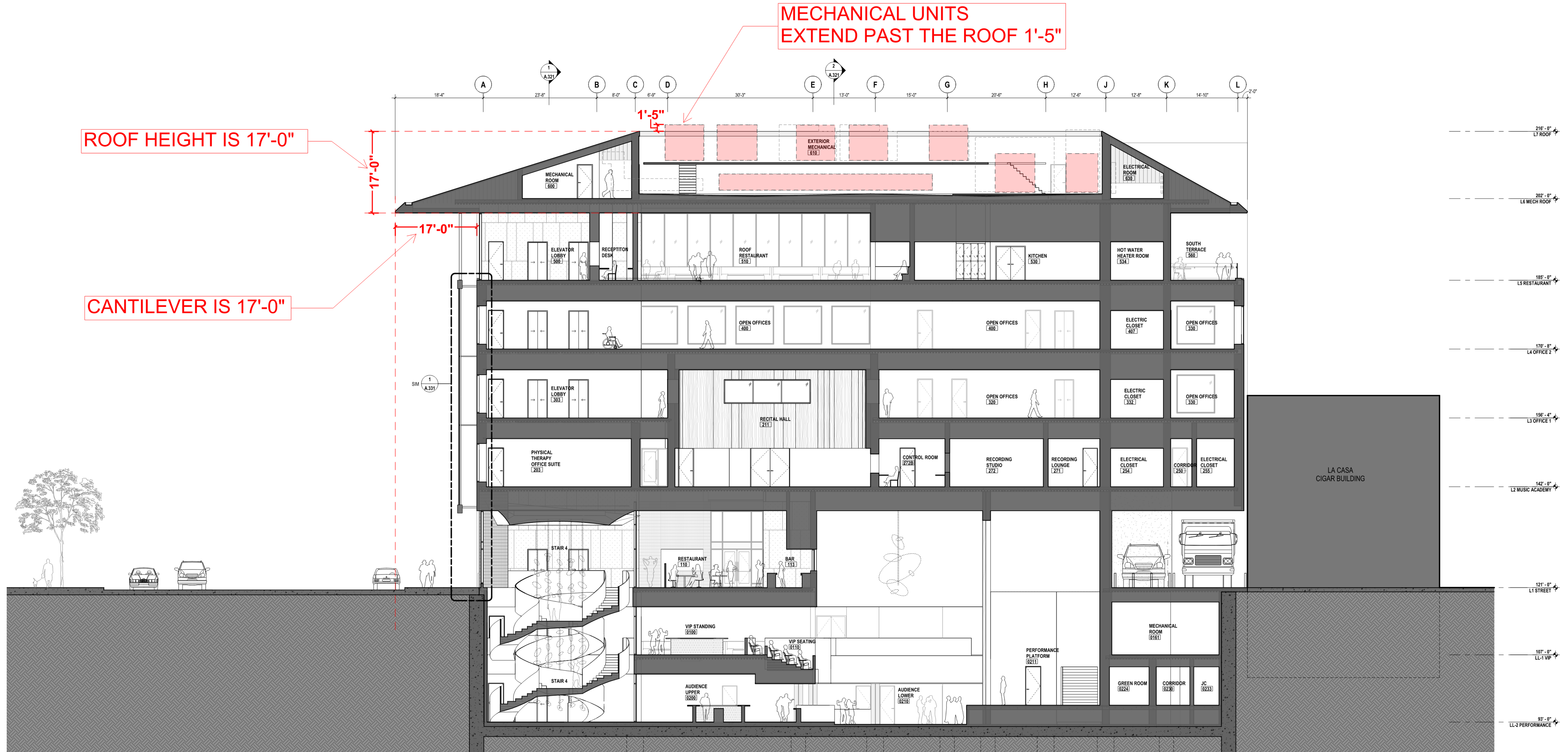
## **AGENDA:**

1. Roof Height Feasibility Study
2. Exterior Decorative Screen Design

**ROOF HEIGHT  
FEASIBILITY STUDY**



# SECTION // 100% SD









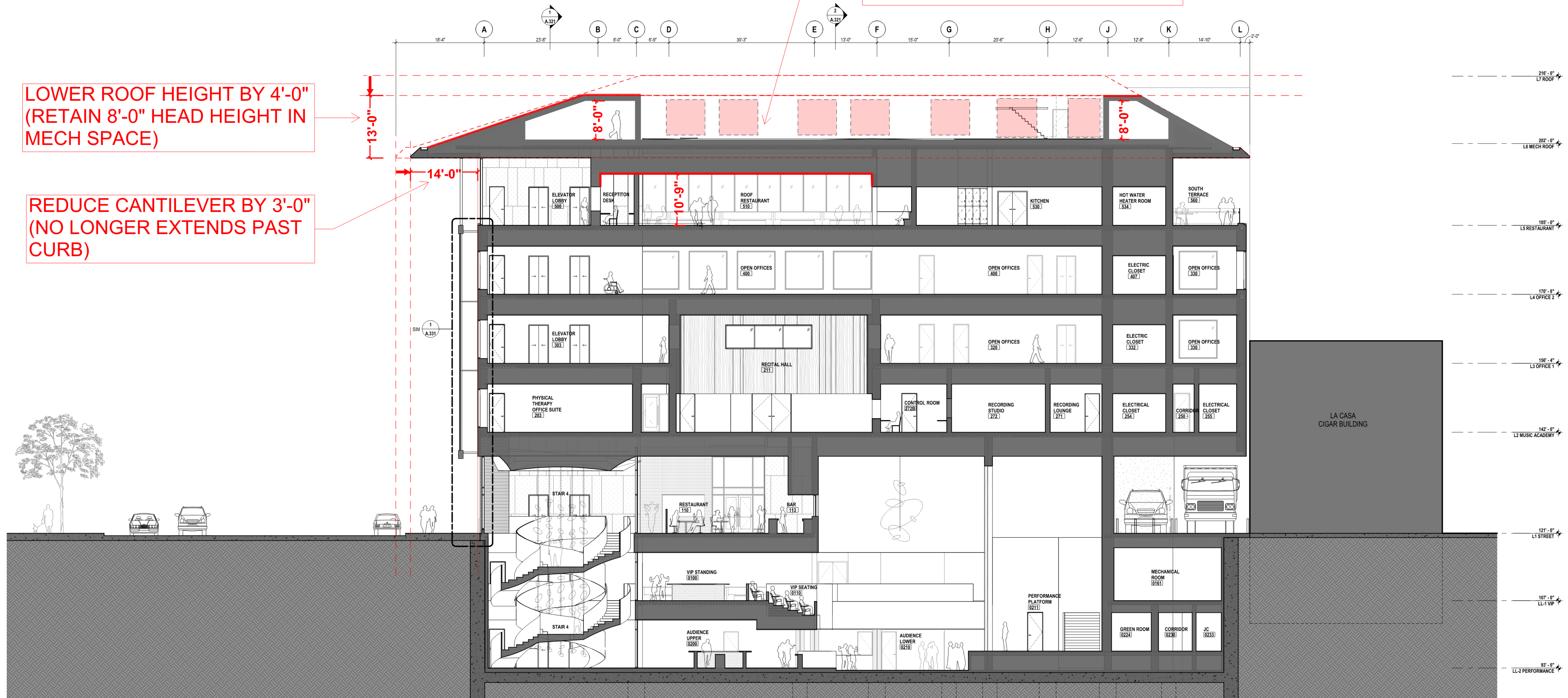
### SECTION // REDUCED ROOF

- REDUCE CANTILEVER
- LOWER ROOF
- LOWER MECHANICAL EQUIPMENT

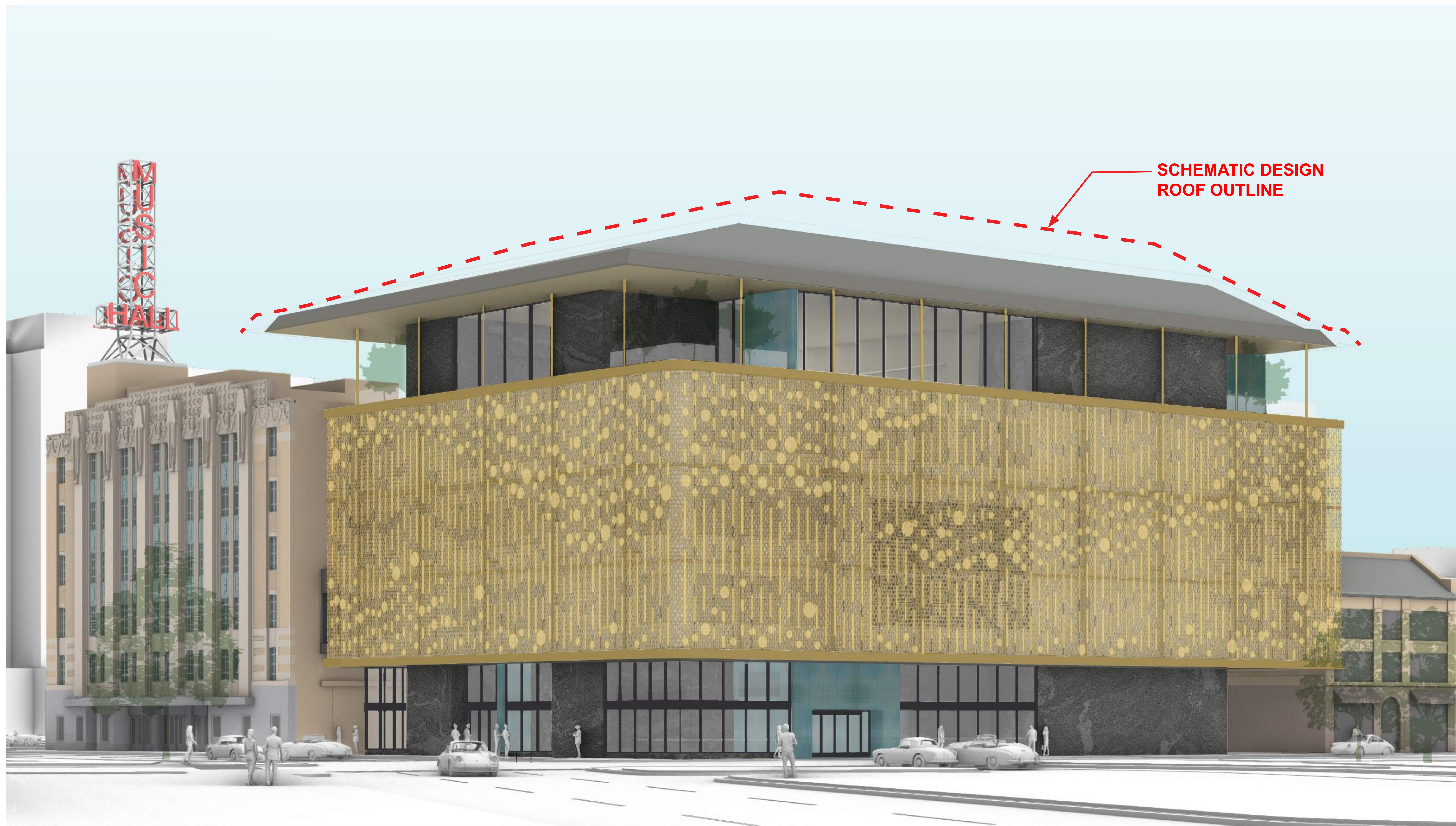
MECH EQUIPMENT LOWERED BY REDUCING INTERIOR CEILING HEIGHT OF RESTAURANT

LOWER ROOF HEIGHT BY 4'-0" (RETAIN 8'-0" HEAD HEIGHT IN MECH SPACE)

REDUCE CANTILEVER BY 3'-0" (NO LONGER EXTENDS PAST CURB)

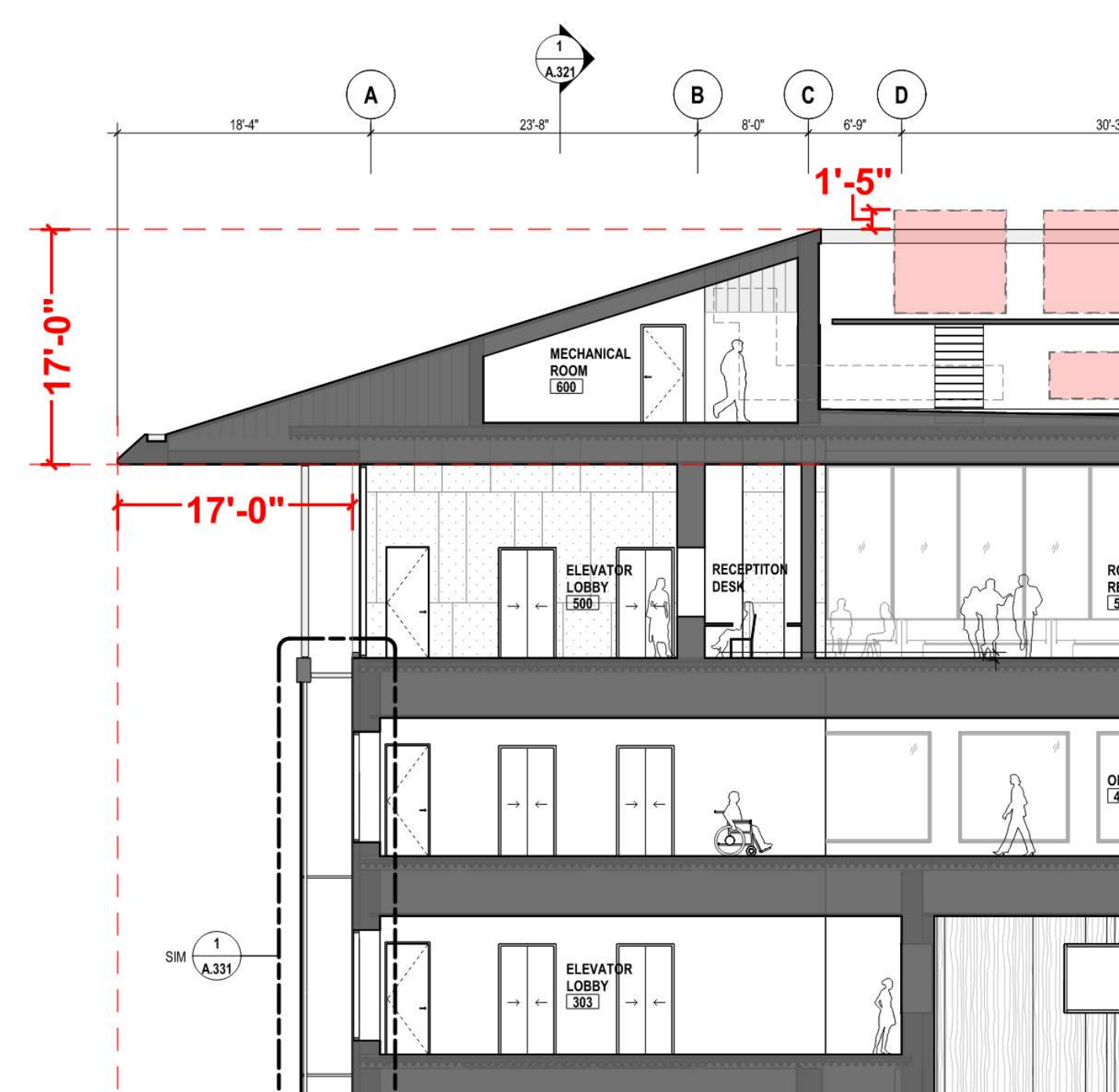
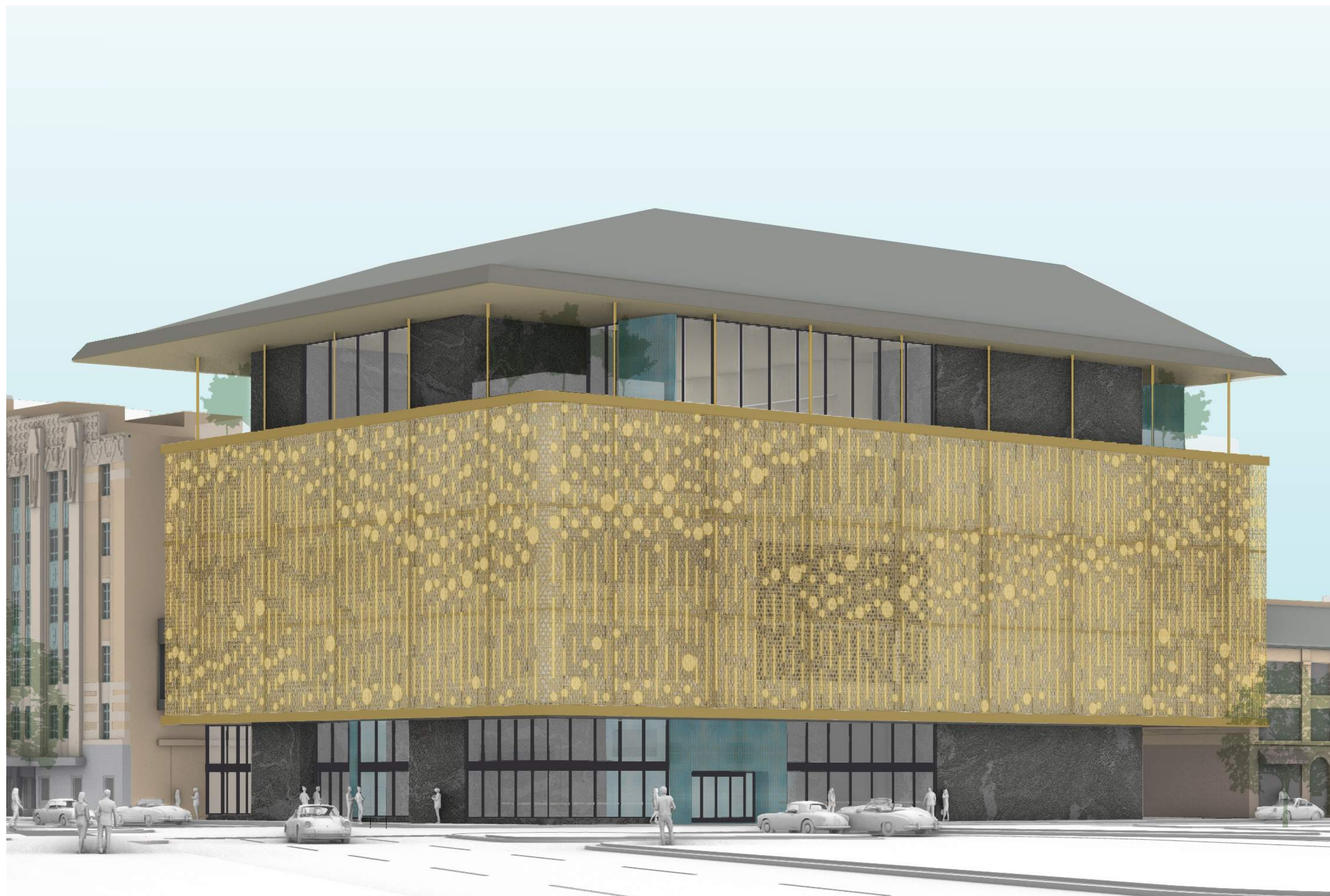






SCHEMATIC DESIGN  
ROOF OUTLINE





100% SD ROOF DESIGN



REDUCED ROOF



# EXTERIOR DECORATIVE SCREEN DESIGN



# OVERALL BUILDING PALETTE



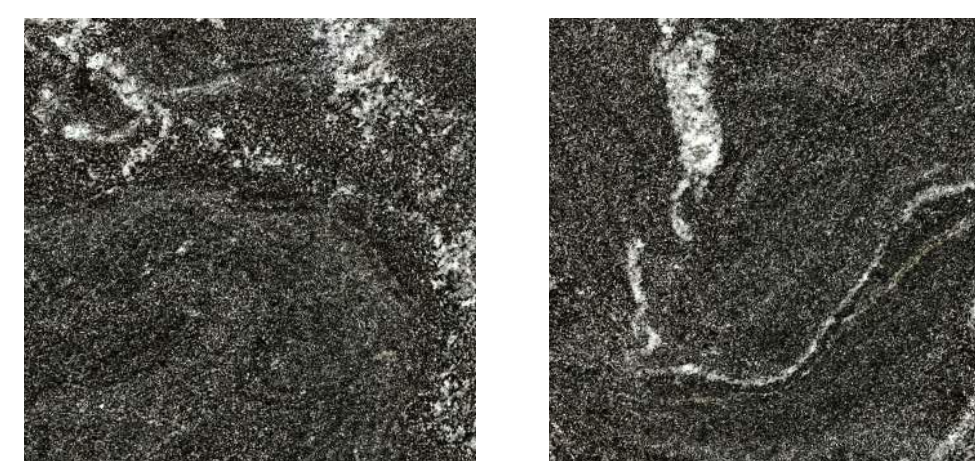
## METAL ROOF WITH MIRRORED SOFFIT



Standing seam metal roof, painted aluminum.

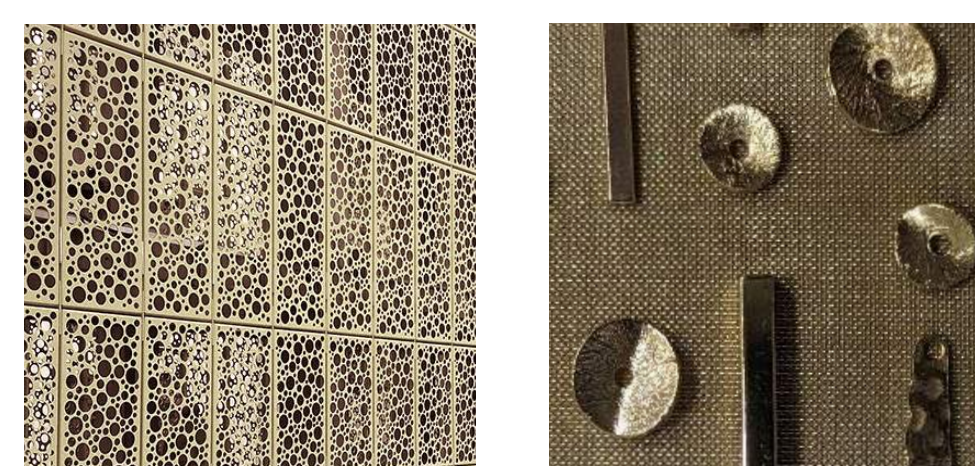
Alucobond Plus Elements Series reflective mirror finish in face-fastened rainscreen system. 2" thick aluminum composite metal (ACM) panel system with reflective mirror finish.

## DARK GRANITE CLADDING



Stone clad wall and base. Provide 2" thick stone wall panels (up to 4' x 8') and base panels with flamed and brushed finish. Exposed edges of stone panels shall be finished in the same manner as the faces.

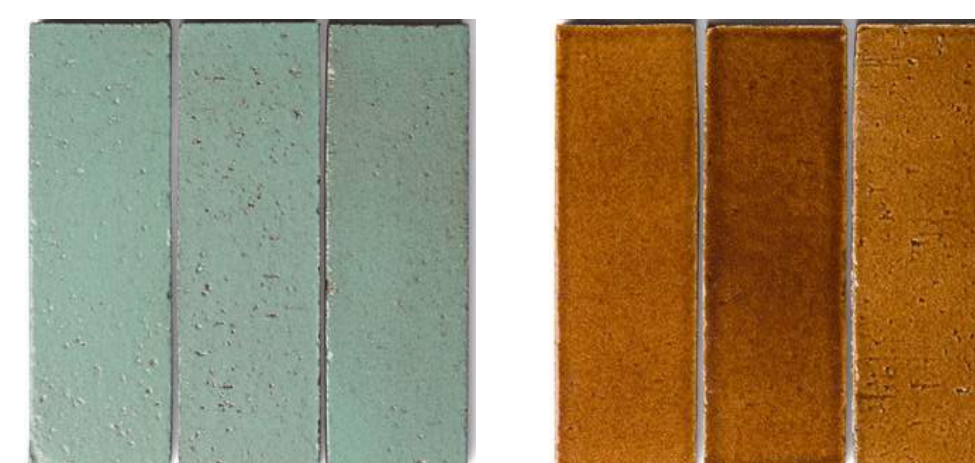
## SUN SCREEN & DECORATIVE ATTACHMENTS



BOK Modern Enfold Screen System. Anodized aluminum folded panel system with custom perforation pattern and attached decorative elements.

Custom folded/shaped anodized aluminum forms fastened to perforated screen. Shapes to be insided abstracted musical elements.

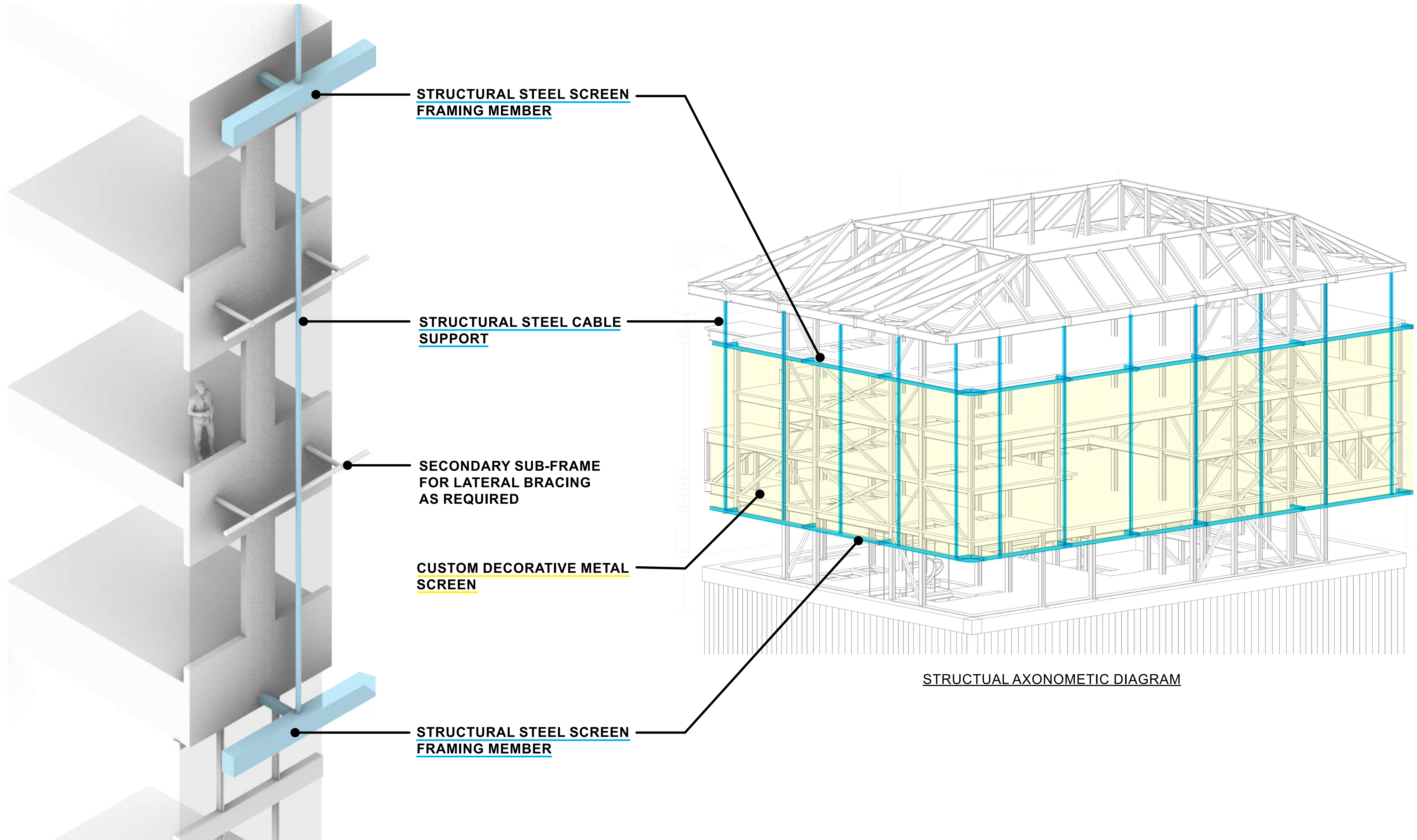
## THIN GLAZED BRICK (COLOR TBD)



Fireclay 2"x8" Thin modular brick with glazed face (glaze as selected by the Architect). Glaze is hand-applied to domestically sourced thin brick body. Glaze will have noticeable color variation, and will be complimentary to adjacent Existing Music Hall.

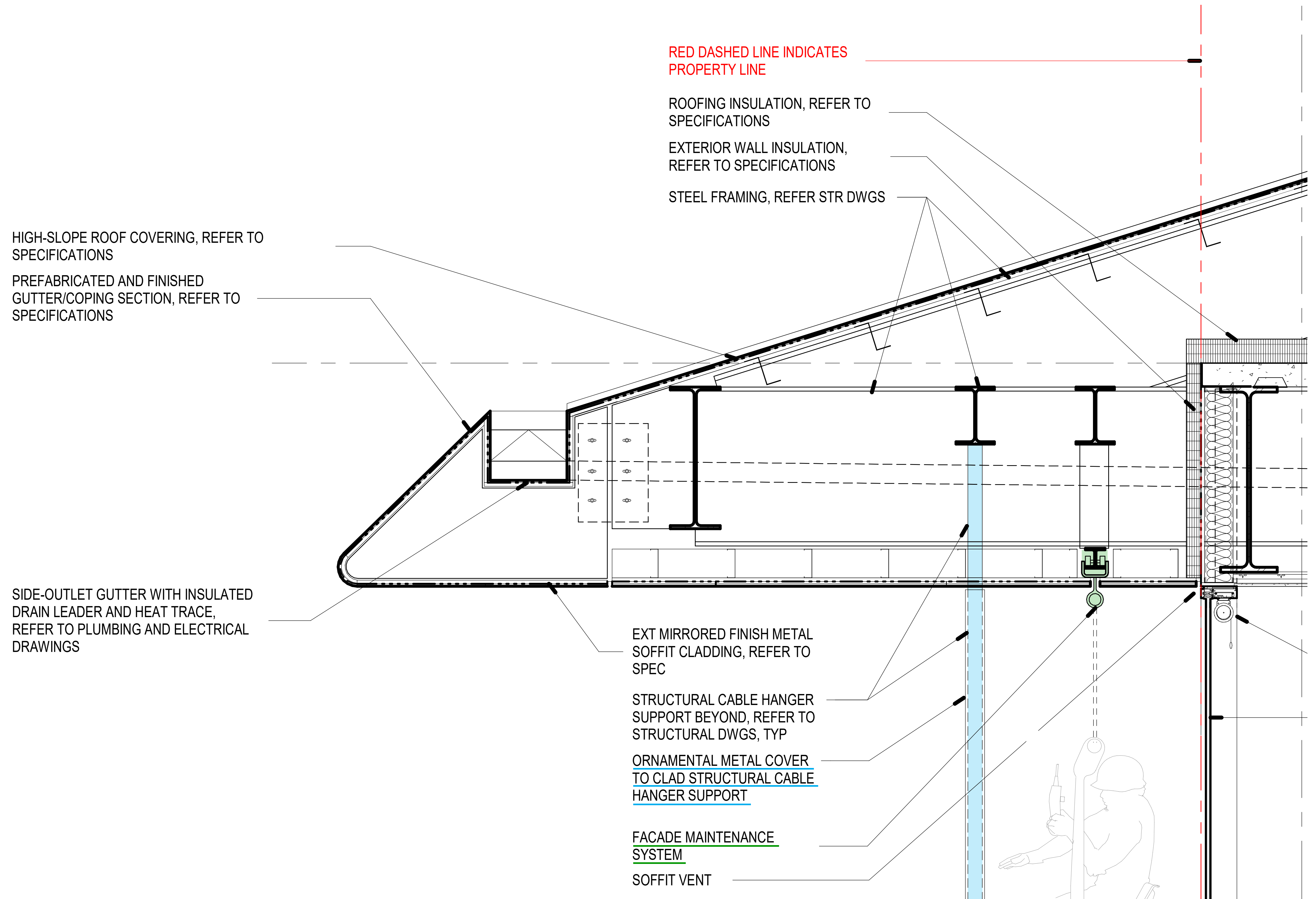


# SCREEN STRUCTURAL FRAMING



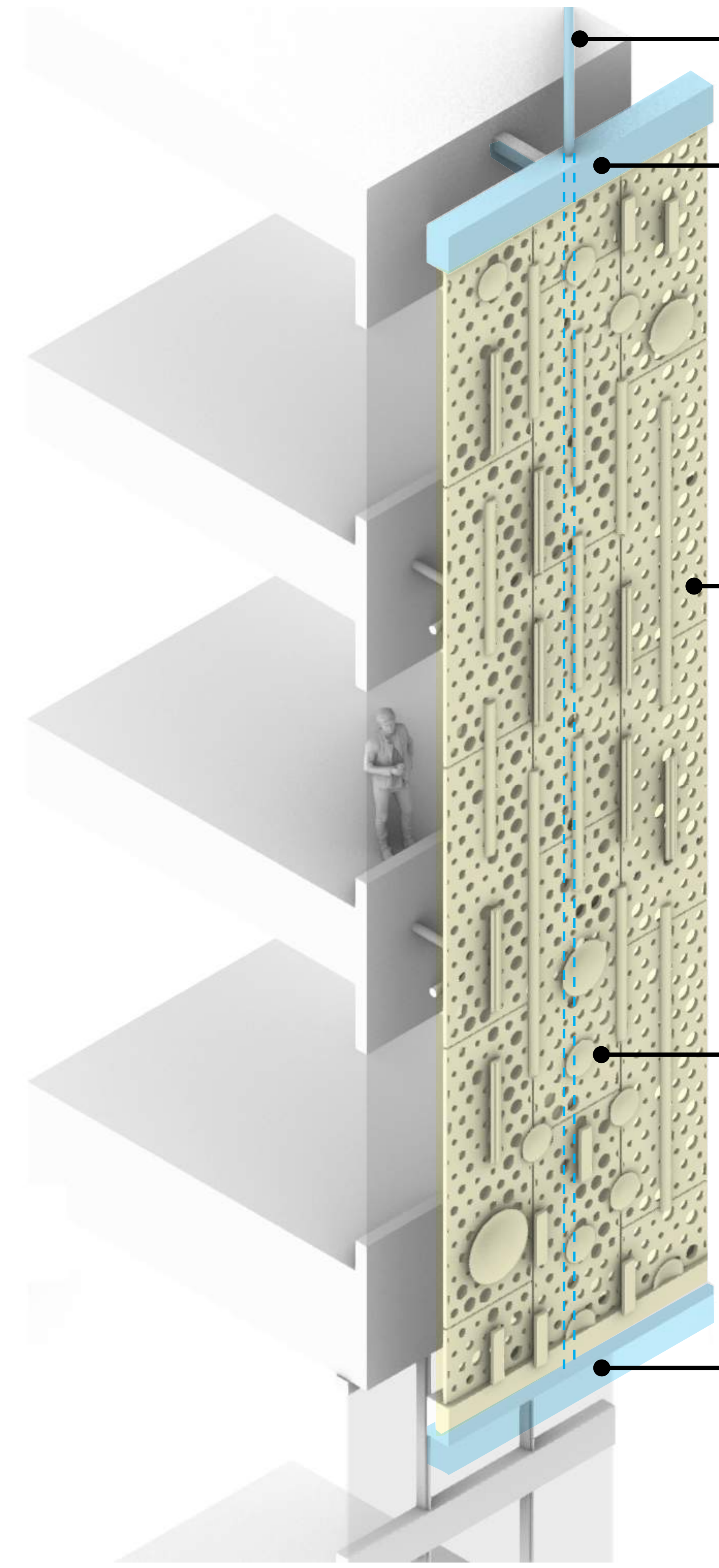
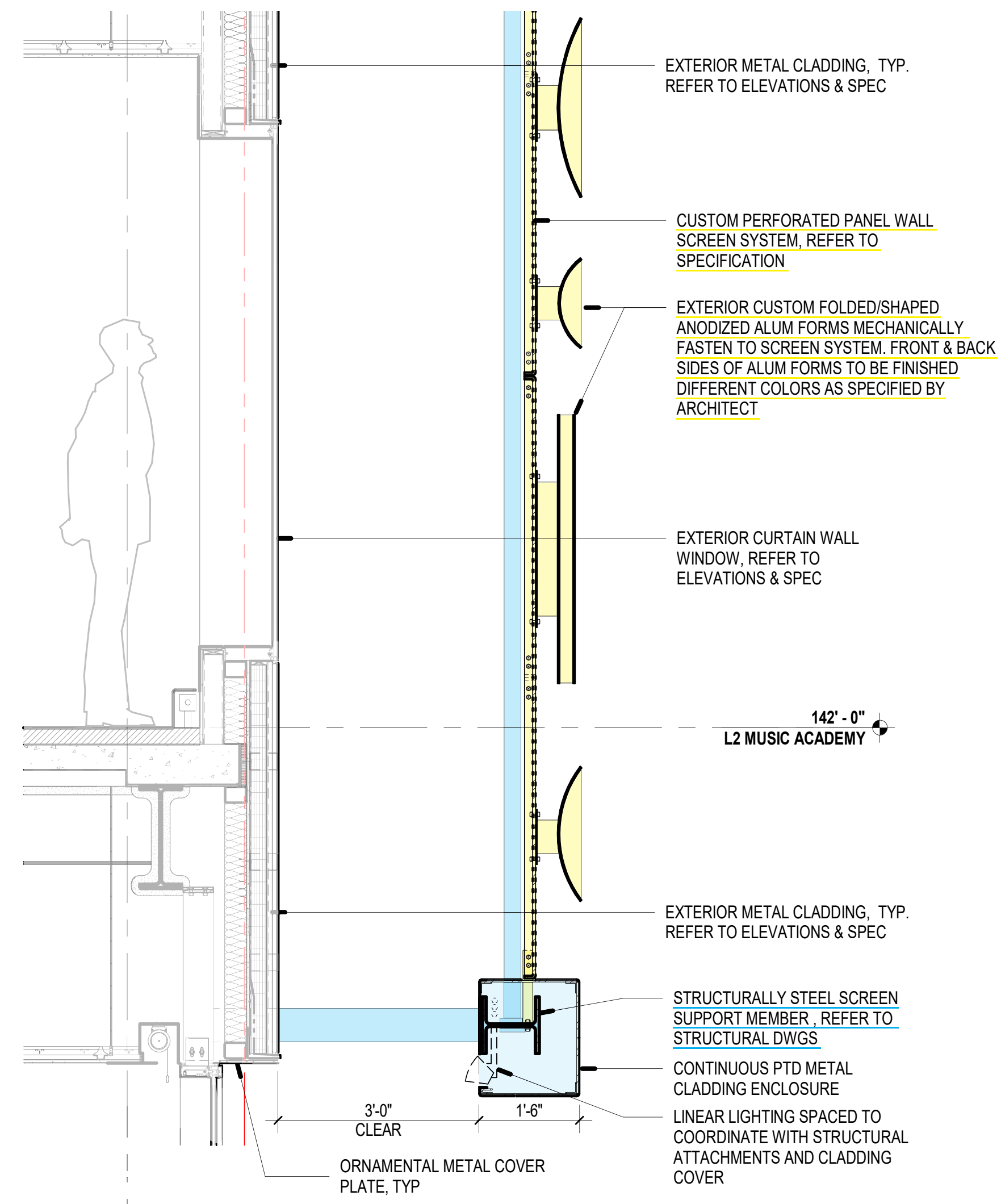
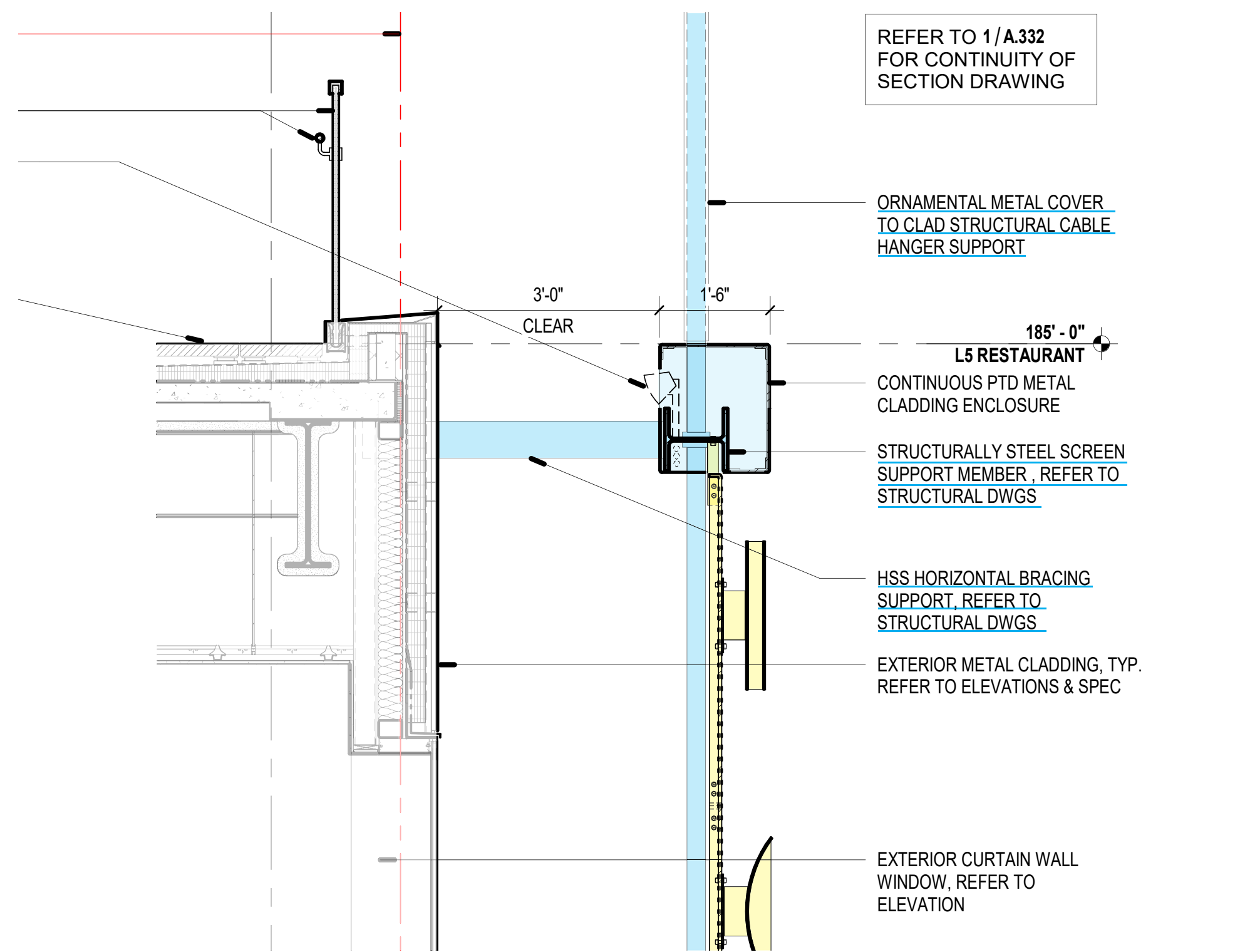


# SCREEN STRUCTURAL CABLE SUPPORT





# SCREEN DESIGN



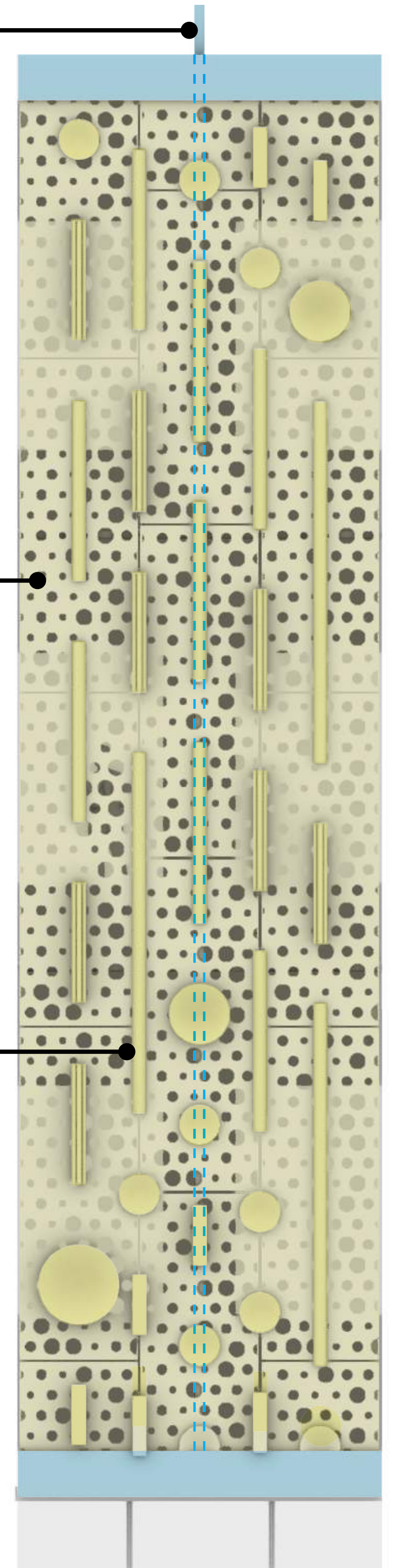
**STRUCTURAL STEEL CABLE SUPPORT**

**STRUCTURAL STEEL SCREEN FRAMING MEMBER & COVER**

**CUSTOM BOK MODERN "ENFOLD" SCREEN SYSTEM**

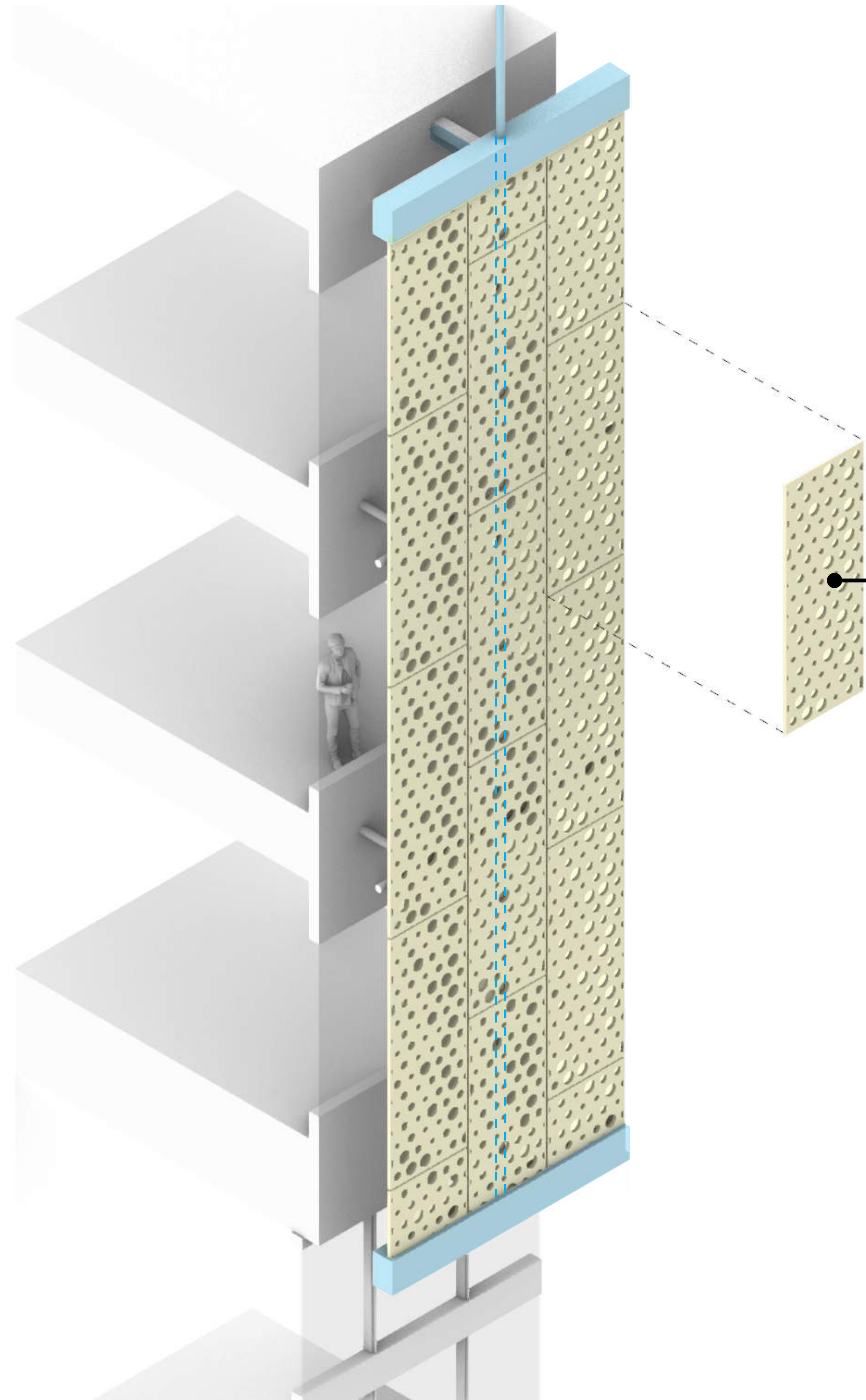
**CUSTOM DECORATIVE ANODIZED ALUMINUM ATTACHMENTS**

**STRUCTURAL STEEL SCREEN FRAMING MEMBER & COVER**





## SCREEN PANELS

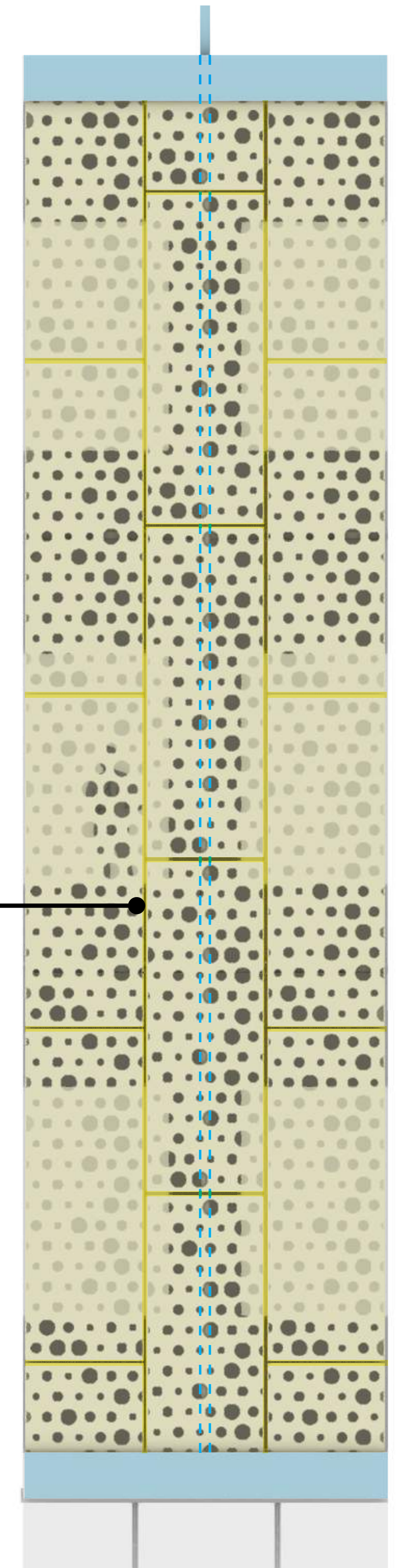


### CUSTOM BOK MODERN “ENFOLD” SCREEN SYSTEM

4’ wide folded anodized aluminum panel system with custom perforation pattern.

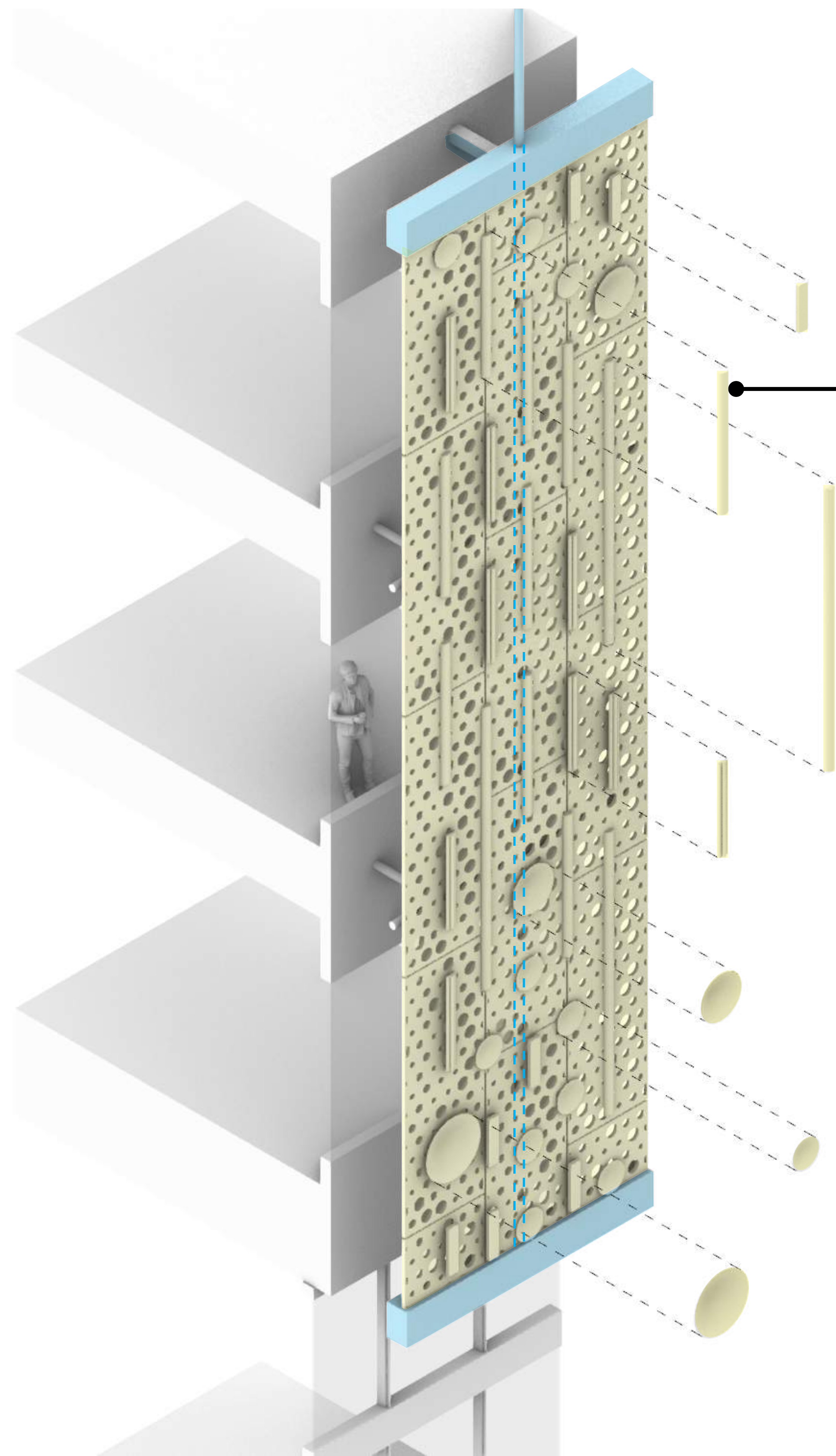
The custom perforated pattern of these Panels will adapt as the design progresses relating to general constructibility, engineering loads, visibility from the interior of the building, decorative attachment detailing, and overall design aesthetics.

The Enfold Screen System utilizes a staggered panel arrangement that provides extra rigidity, thus allowing for reduced structural framing.





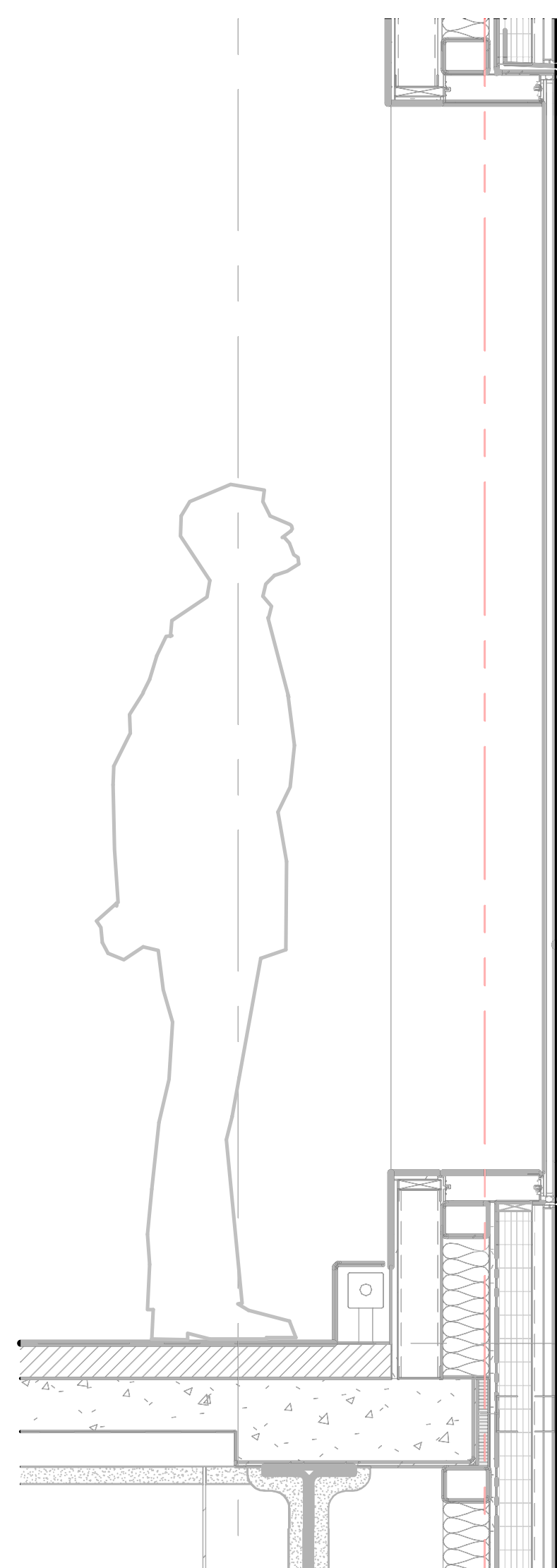
# DECORATIVE ELEMENTS



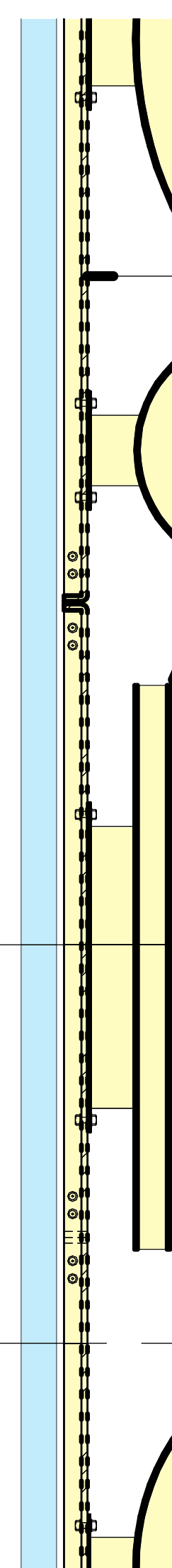
## CUSTOM DECORATIVE ANODIZED ALUMINUM ATTACHMENTS

Custom folded/shaped anodized aluminum forms mechanically fastened the BOK Modern Enfold screen system panels.

These decorative aluminum shapes are to be inspired abstracted musical elements that act as embellishments hinting at the creative program within the building.



SECTION DETAIL - SCREEN

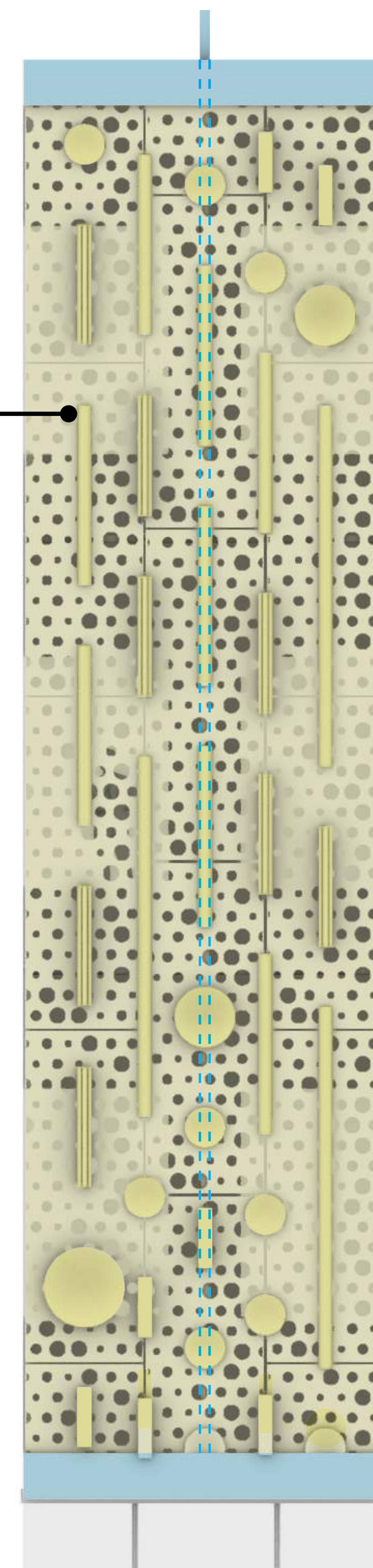


CUSTOM PERFORATED PANEL WALL SCREEN SYSTEM, REFER TO SPECIFICATION

EXTERIOR CUSTOM FOLDED/SHAPED ANODIZED ALUM FORMS MECHANICALLY FASTEN TO SCREEN SYSTEM. FRONT & BACK SIDES OF ALUM FORMS TO BE FINISHED DIFFERENT COLORS AS SPECIFIED BY ARCHITECT

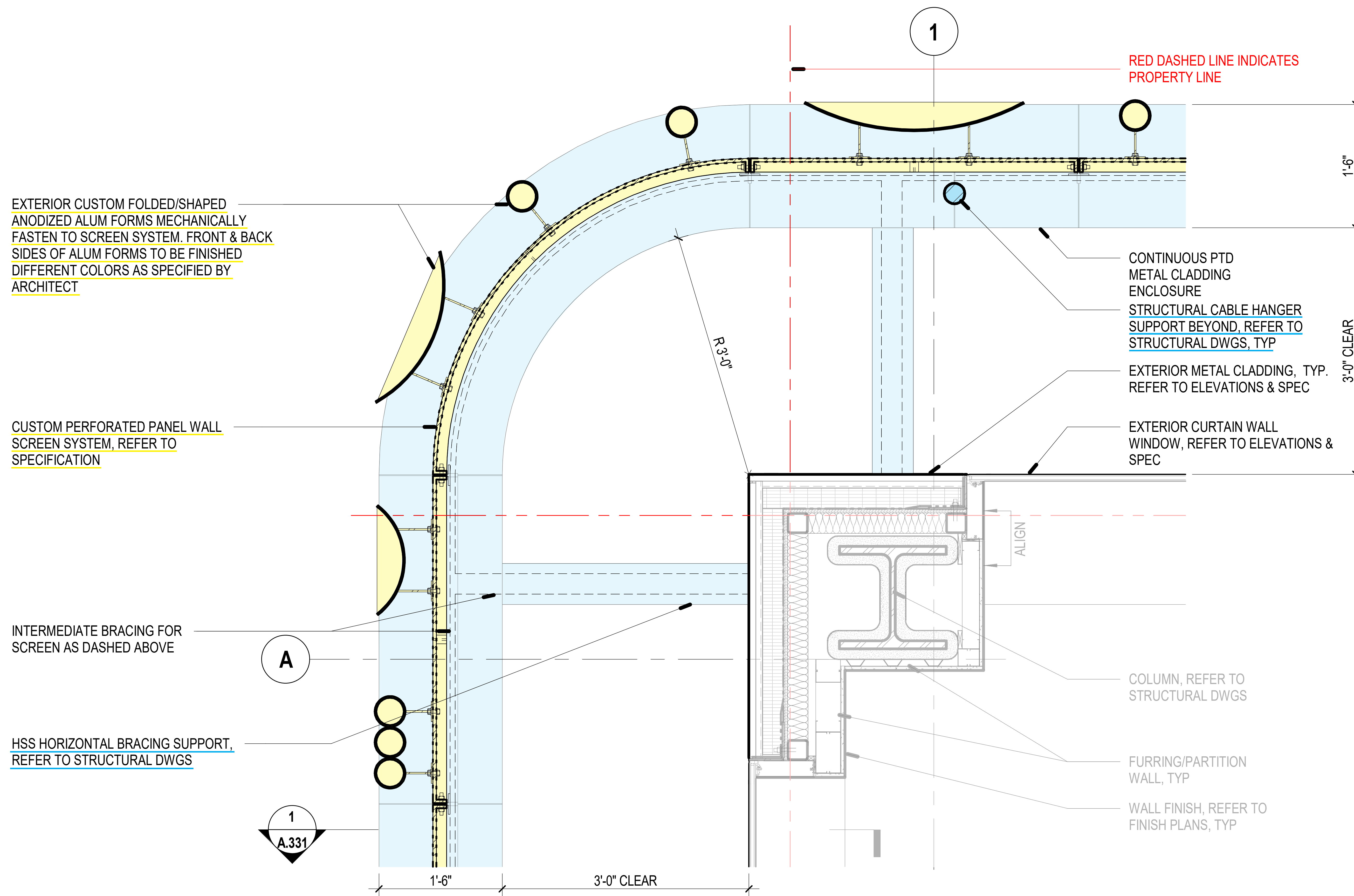
EXTERIOR CURTAIN WALL WINDOW, REFER TO ELEVATIONS & SPEC

142' - 0" L2 MUSIC ACADEMY



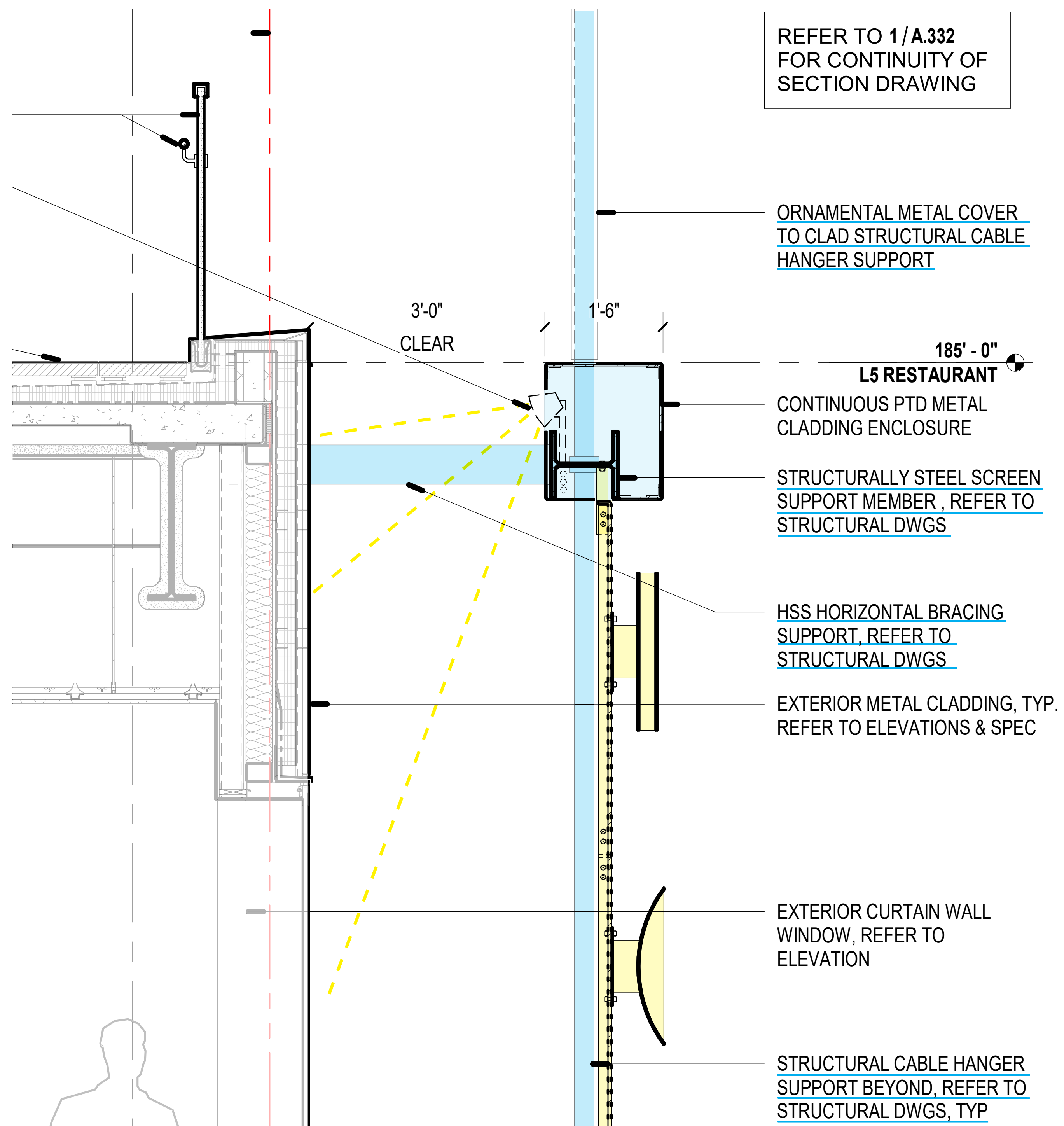


# PLAN DETAIL - SCREEN CORNER

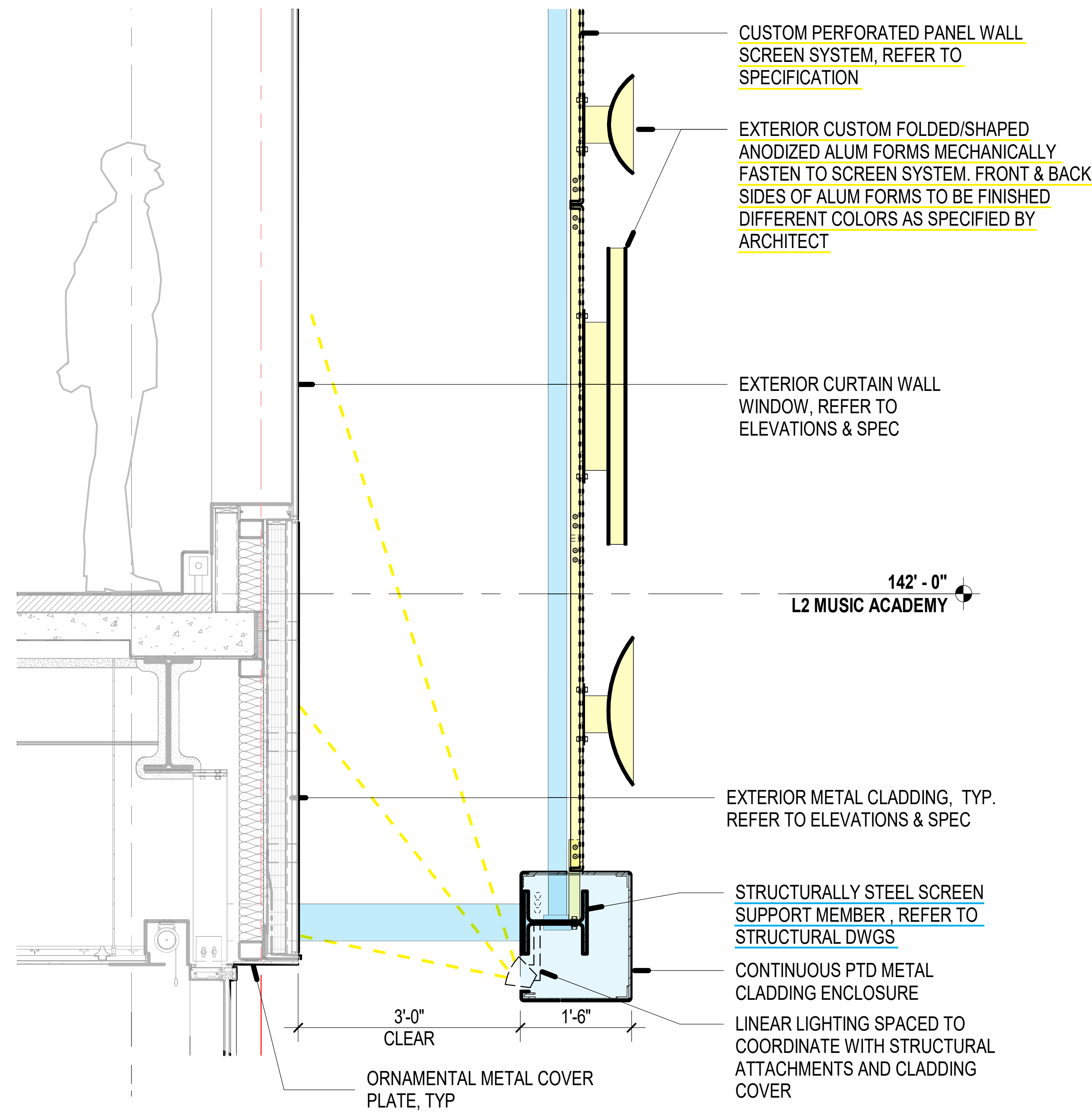




# SECTION DETAIL - SCREEN TOP & BOTTOM FRAME



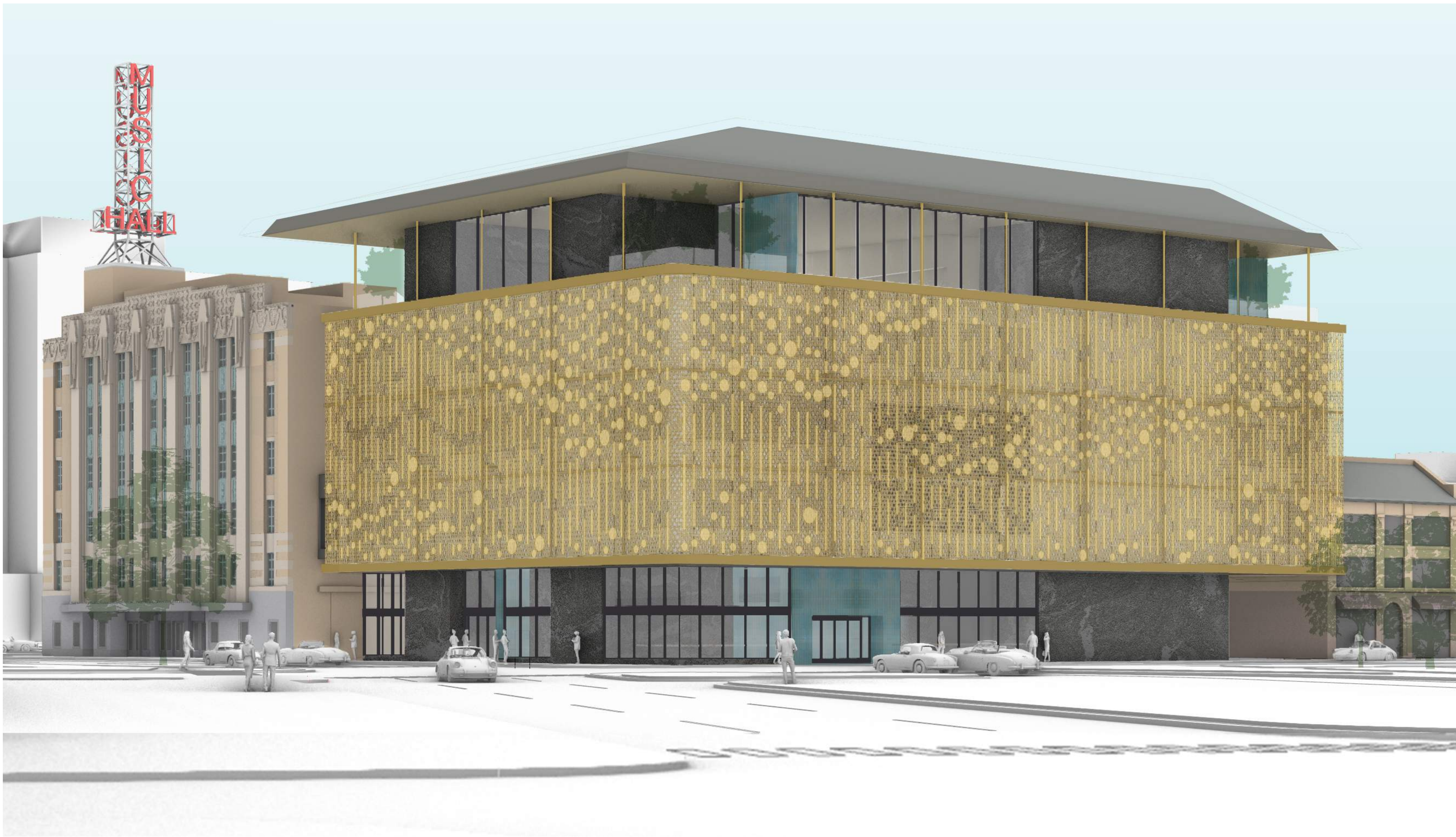
SECTION DETAIL - SCREEN TOP FRAME



SECTION DETAIL - SCREEN BOTTOM FRAME



**SCREEN RENDERING**





**Detroit Music Hall Expansion** | Center for the Performing Arts



