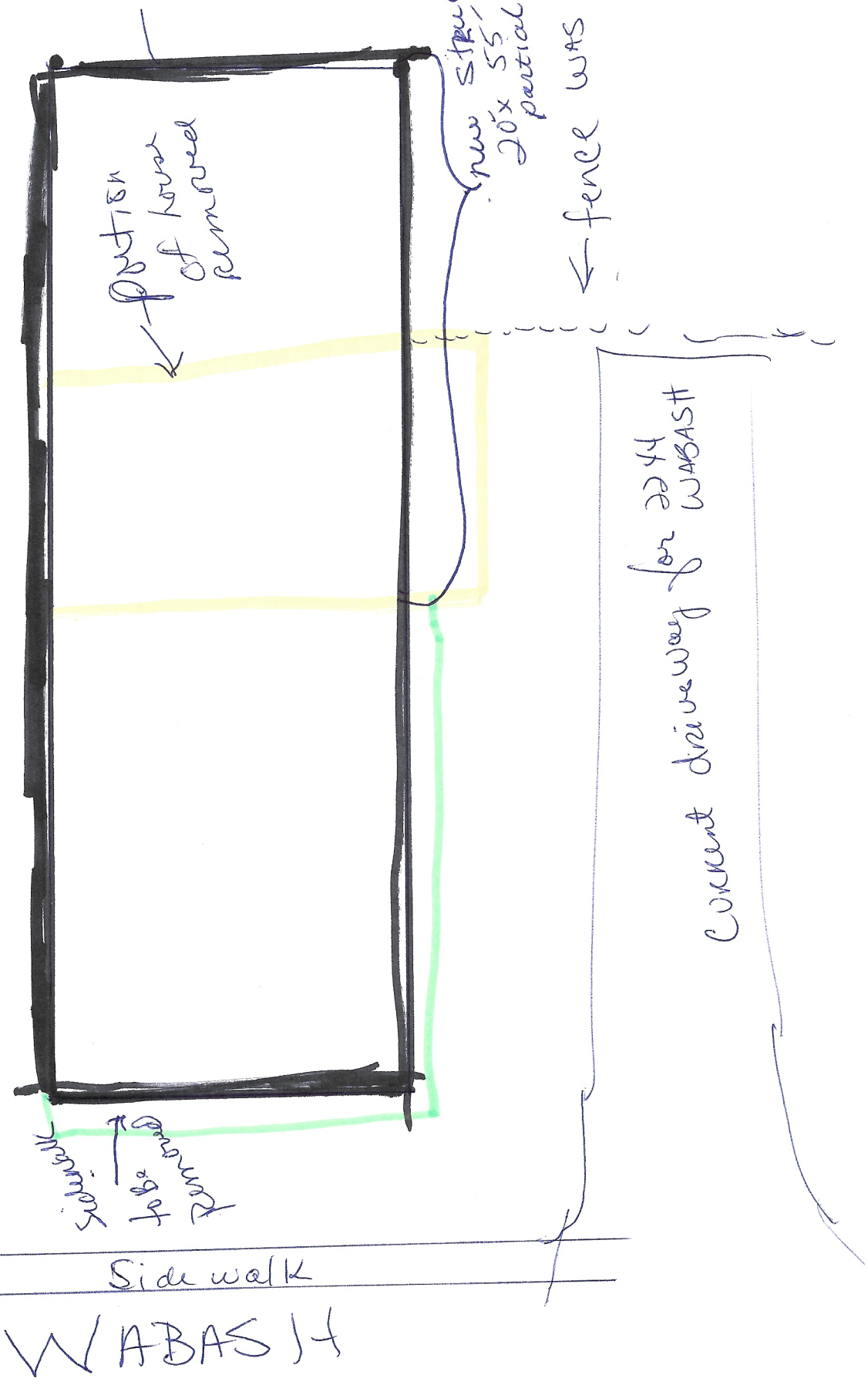
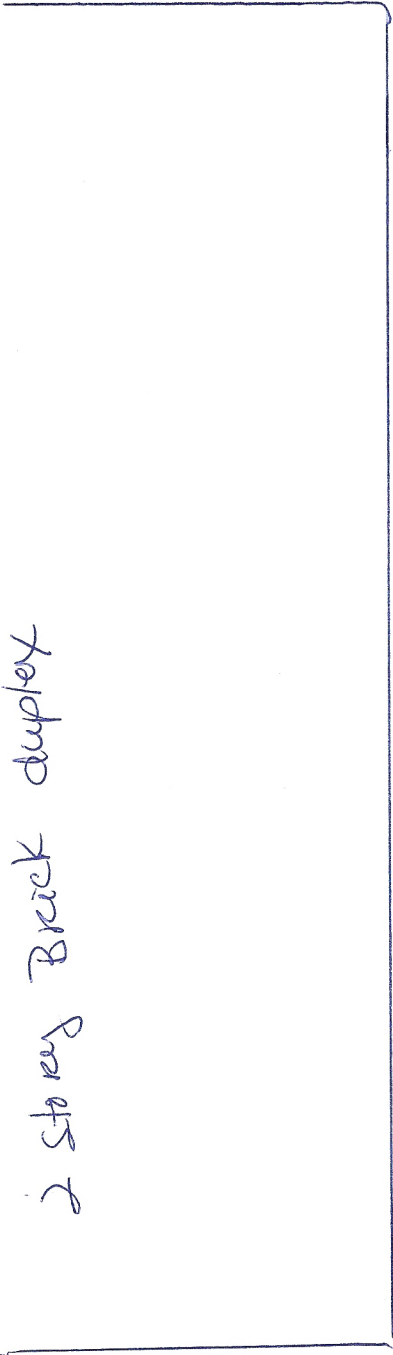


2 story Brick duplex



portion of house removed

new structure 20x55 with partial basement

fence was removed

concrete driveway for 2244 WABAS H

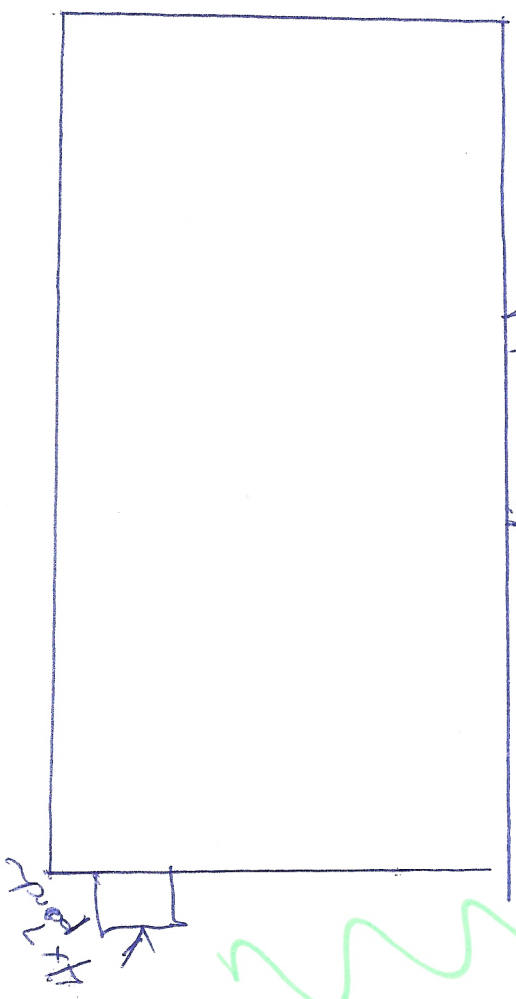
Side walk  
WABAS H

Retaining Wall Removed

House - SINGLE Story - frame seems to be the same as the one that was removed ORIGINAL

Parking  
off  
alley

grass



4x8 porch



driveway

grass

Front - V

Street  
the back



Interior of the house separated here

plastic in

this is removed. it leaned North West

door will be framed like this

Remove this cement

leaned South



Rotted wood  
replaced  
Cement  
Removed

← Cement  
sidewalk  
to be  
Removed

← ~~Cement~~  
Cement Block  
put in for  
foundation

Original foundation  
to be repaired, by  
jacking it up to square and  
using cement block to support.



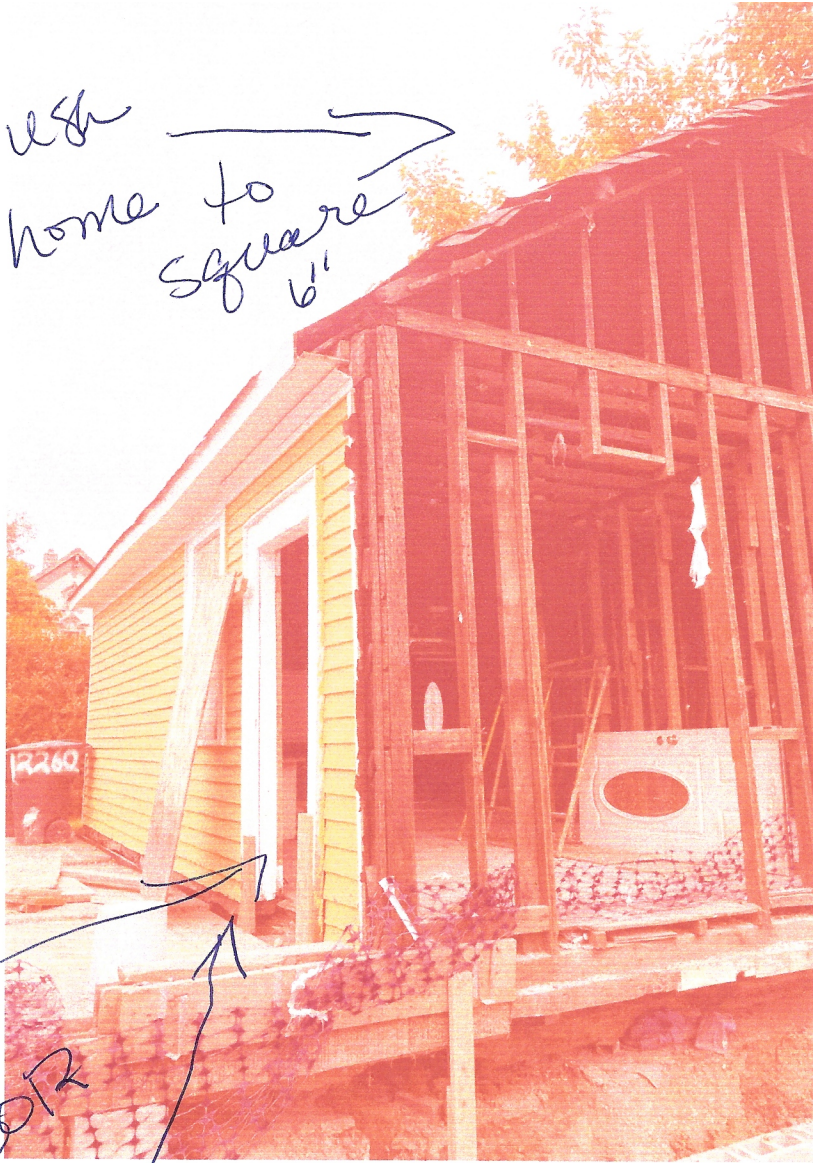
Support  
& Repair  
Foundation

Push  
home to  
square  
6"

Side  
of home  
will  
look original

Repair  
this DOOR  
and

Repair  
foundation  
under original  
home



← Leave  
the original  
structure  
and follow  
the existing  
roof line  
and walls  
Back 20 feet  
to meet original  
foundation