

ATAS International, Inc.

Sustainable Building Envelope Technology



Numerous hole sizes,
pattern placement
options, custom
shapes and variations

PERFORATED PANELS

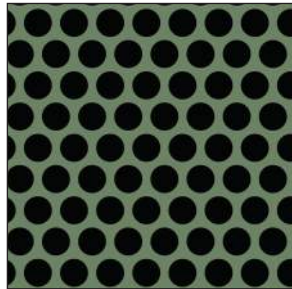
GATEN SERIES

GATEN SERIES PATTERNS

Available in a wide selection of gauges, materials, panel profiles, and colors, Gaten Series perforated panels are ideal for numerous applications including architectural design, passive solar shading, ventilation, acoustical solutions, and equipment screens. ATAS offers six standard hole size patterns, as well as custom options to fit any project's design needs. Additionally, ATAS can color-match each side of the panels for applications where both sides are visible.

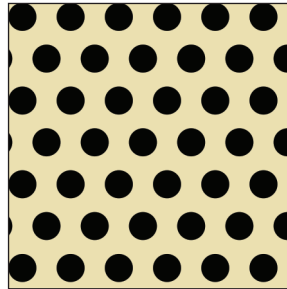
ATAS provides a single source package for your project's needs, including engineering expertise, structural hat channels and framing, corners, end caps, trims, and flashings. Contact your local product representative to discuss your project: www.atas.com/rep-finder

An aluminum substrate is recommended for all perforated applications due to its inherent corrosion-resistant properties.

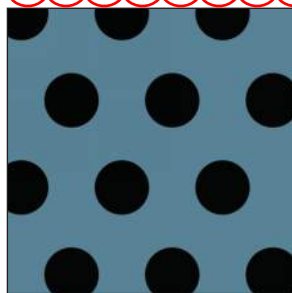


A13
1/8" holes
3/16" staggered centers
40% open area
Shown in Patina Green

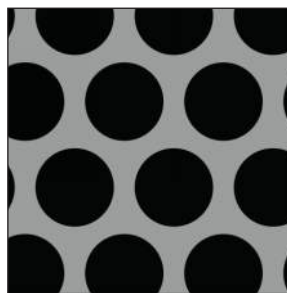
MTL 3A 3B



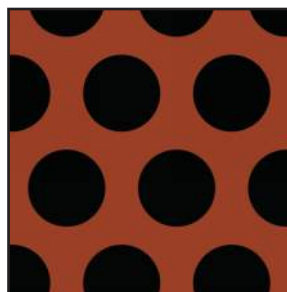
A15
1/8" holes
1/4" staggered centers
23% open area
Shown in Concord Cream



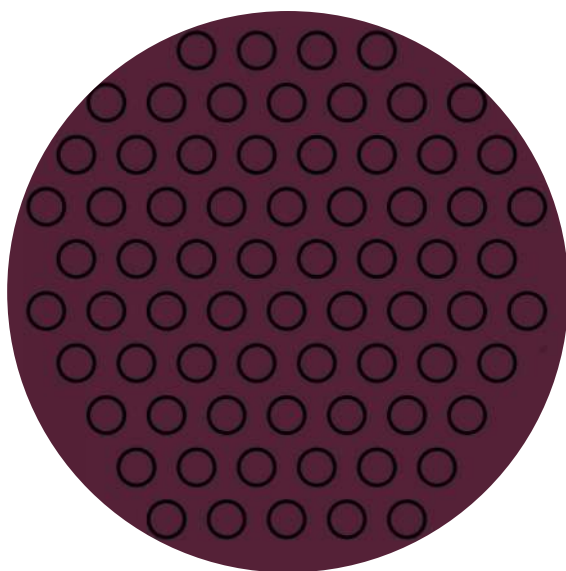
A23
1/4" holes
1/2" staggered centers
23% open area
Shown in Slate Blue



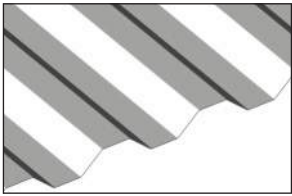
A24
3/8" holes
1/2" staggered centers
51% open area
Shown in Silversmith



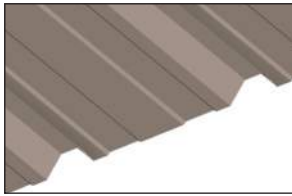
A25
3/8" holes
9/16" staggered centers
40% open area
Shown in Mission Red



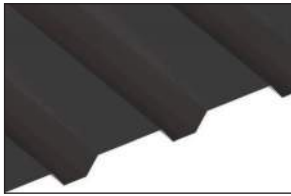
A19
3/16" holes
5/16" staggered centers
33% open area
Shown in Boysenberry



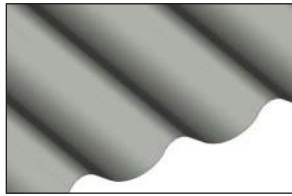
Belvedere 7.2" Rib



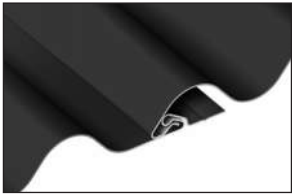
Belvedere Grand R



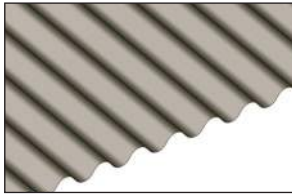
Belvedere PenumWall



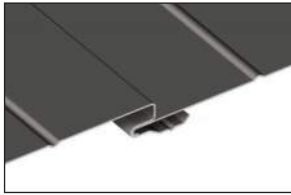
Belvedere Wave Panel



Corra-Lok



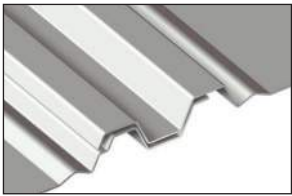
Corrugated Panel



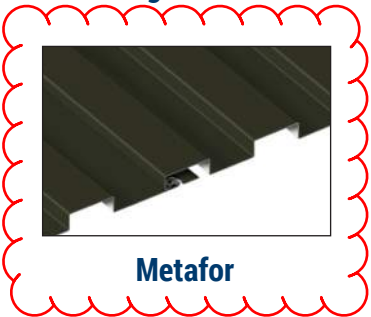
Design Wall



Grand C



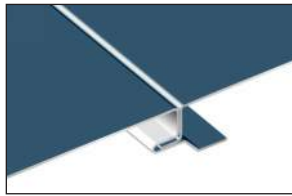
Grand V



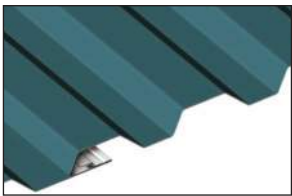
Metafor



Multi-Purpose Panels



Opaline



Rigid Wall



Rigid Wall II



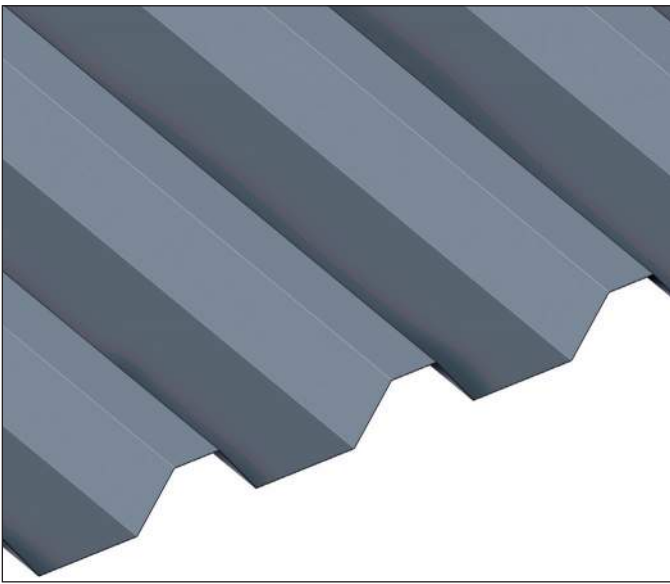
Span Wall



Versa Series



Belvedere 6" Short Rib, Ascot White
Hole Pattern: A15
Application: Accent Wall
University of Arkansas, Fayetteville, AR



↑ **ON THE COVER: Belvedere 6" Short Rib** ↓

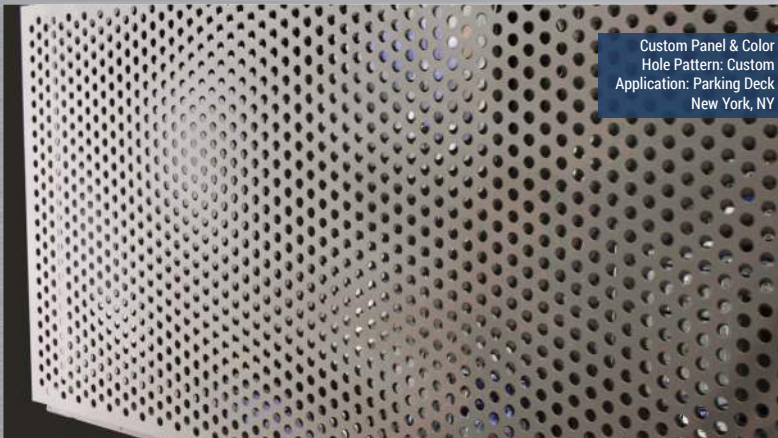
Corrugated Panel, Slate Grey
Hole Pattern: Custom
Application: Accent Wall
Flying Fish Brewery, Somerdale, NJ



Corrugated Panel, Ascot White
Hole Pattern: A13
Application: Accent Wall
Fromagex, Rimouski, Québec



Corrugated Panel, Custom Color
Hole Pattern: Custom
Application: Accent Wall
West-MEC NE Campus, Phoenix, AZ



Custom Panel & Color
Hole Pattern: Custom
Application: Parking Deck
New York, NY

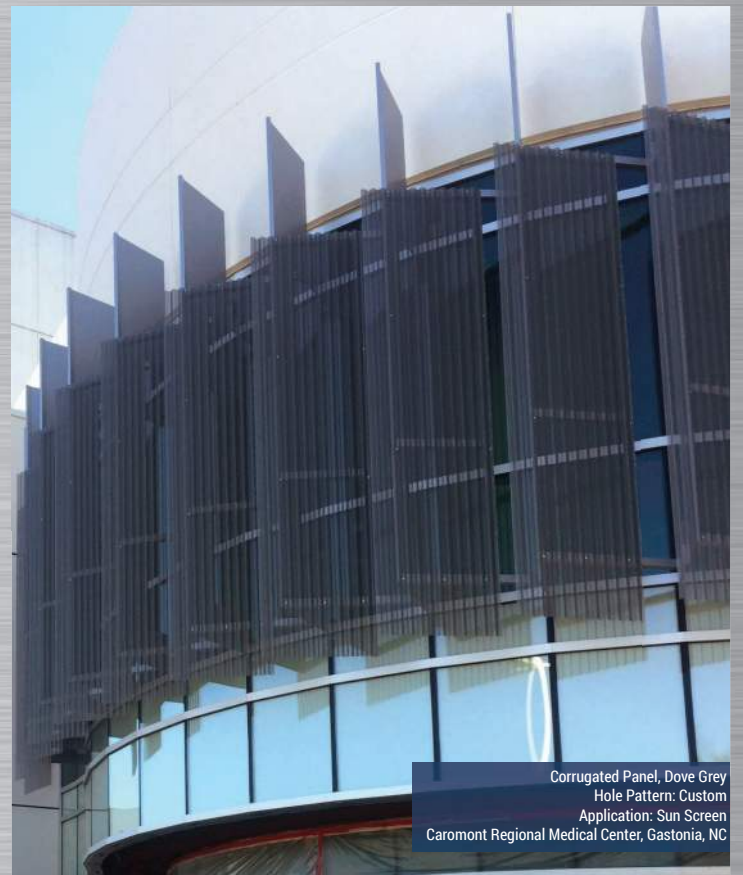


Belvedere 7.2" Rib, Patina Green
Hole Pattern: A19
Application: Equipment Screen
Libbie Mill, Richmond, VA

Belvedere 6" Short Rib, Ascot White
Hole Pattern: A24
Application: Equipment Screen
75 Tresser, Stamford, CT



Belvedere 7.2" Rib, Forest Green, Teal, & custom green
Hole Pattern: A19
Application: Sunscreen
Rocketship Charter School, San Jose, CA
Photo: Swift Lee Office



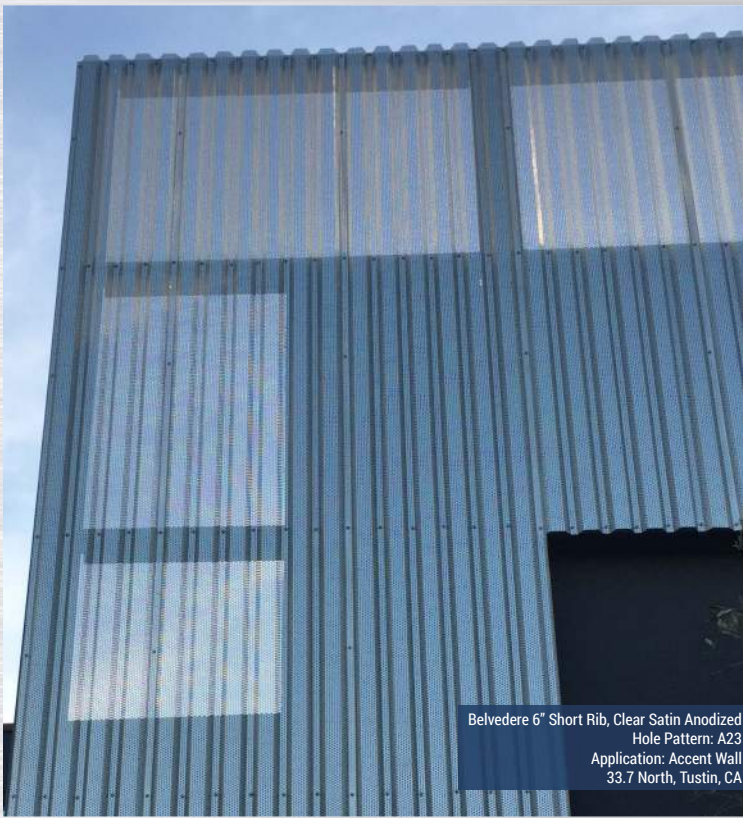
Corrugated Panel, Dove Grey
Hole Pattern: Custom
Application: Sun Screen
Caromont Regional Medical Center, Gastonia, NC

Corrugated Panel, Titanium
Hole Pattern: Custom
Application: PTAC Unit Screens
Newark Ave. Residences, Jersey City, NJ

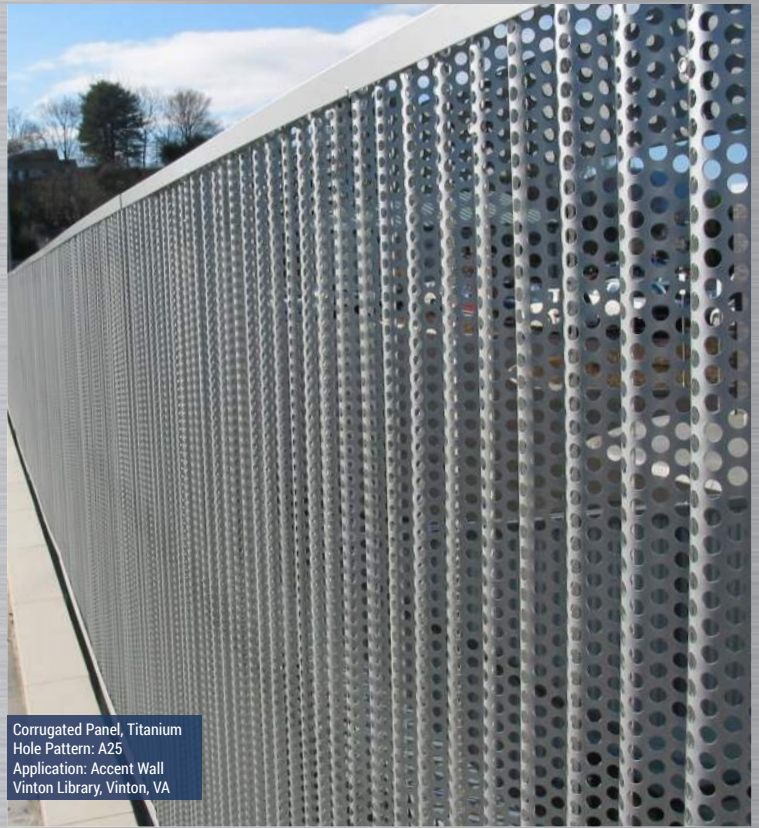


Belvedere 7.2" Rib, Classic Bronze
Hole Pattern: A15
Application: Accent Wall
Get Air, Pomona, CA

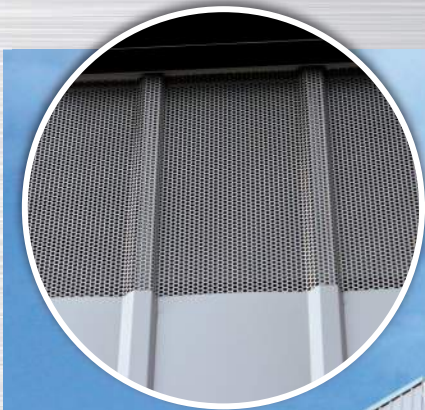




Belvedere 6" Short Rib, Clear Satin Anodized
Hole Pattern: A23
Application: Accent Wall
33.7 North, Tustin, CA



Corrugated Panel, Titanium
Hole Pattern: A25
Application: Accent Wall
Vinton Library, Vinton, VA



Rigid Wall II & Multi-Purpose Panels, Silversmith
Hole Pattern: A24
Application: Sunscreen
The Residences At Twelve40, Philadelphia, PA