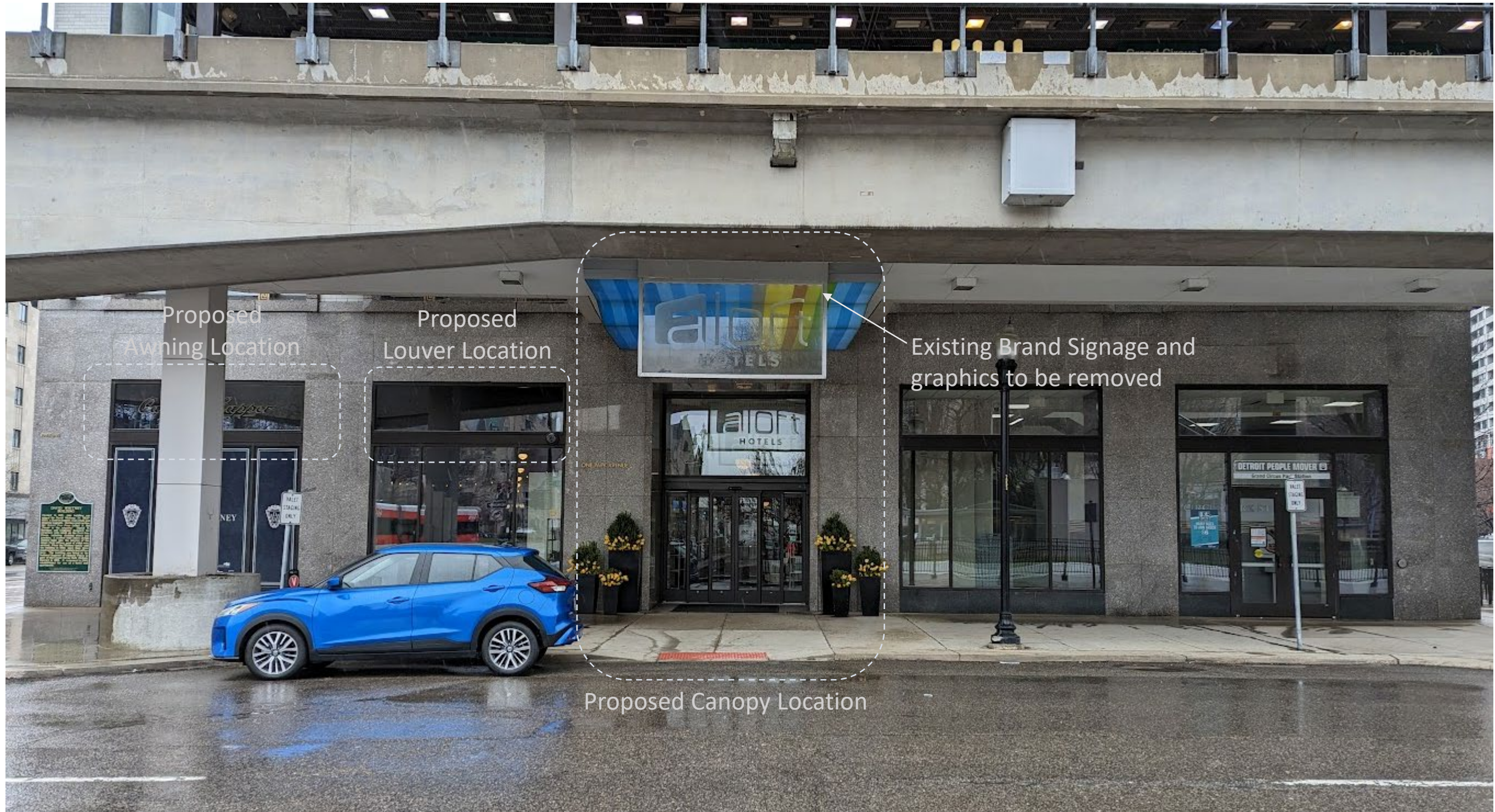


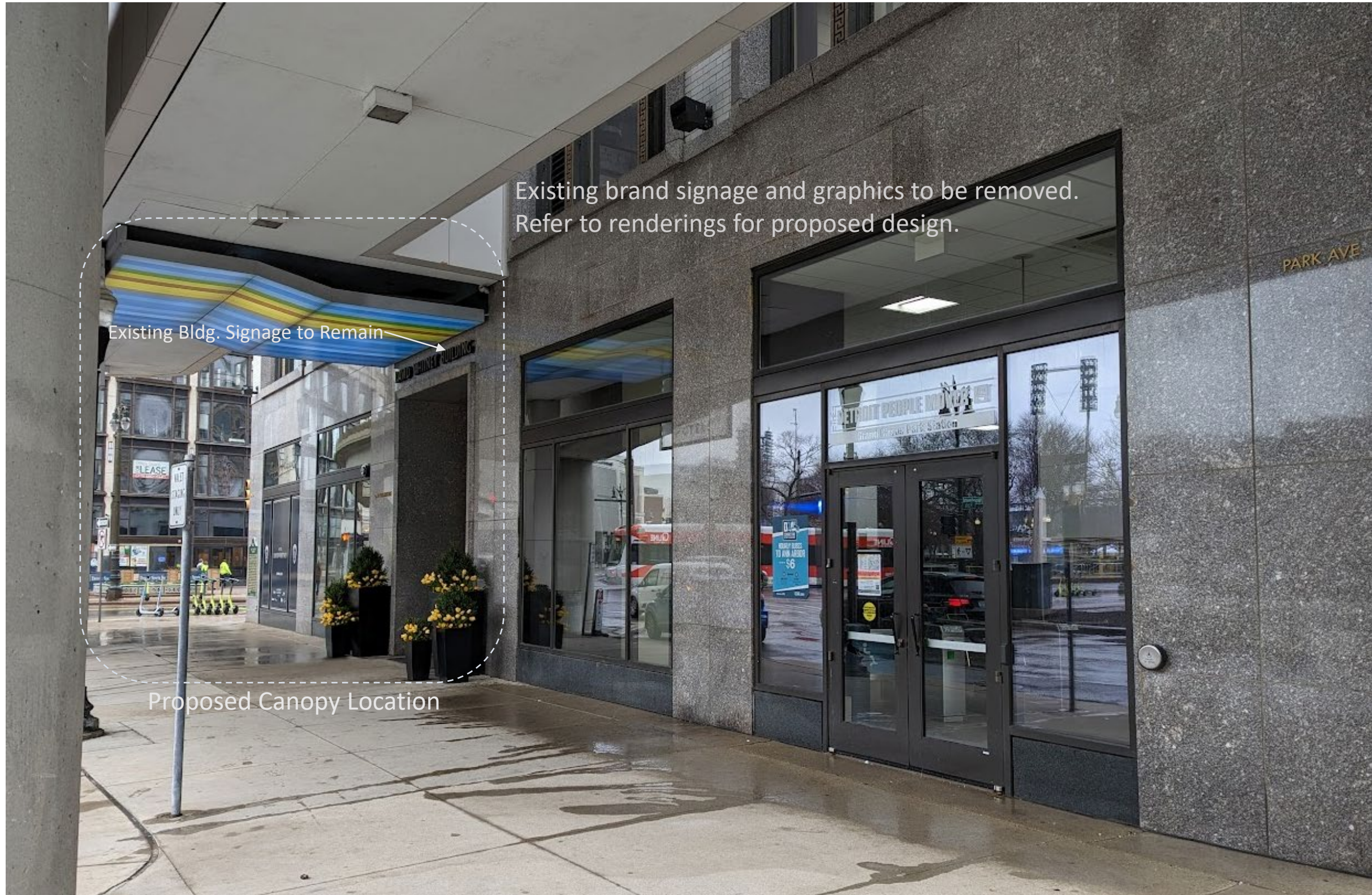
David Whitney Building

Contents

- Existing Conditions Photography
 - Exterior
- Proposed Renderings
 - Park Ave Façade
 - Woodward Façade
 - Washington Ave Façade
- Floorplans
 - Overall Ground Floor
 - Washington Ave Patio
 - Restaurant Tenant
- Details Drawings
 - Proposed Canopy
 - Proposed Restaurant Canopy and Awnings
 - Proposed Planter
- Interior Details
 - Existing Conditions Photography
 - Proposed Elevations
- Neighborhood Precedent and Design Inspiration
 - Daniel Burnham Design Sketches
- Material Selections and Product Selections
 - Pergola Specifications
 - Restaurant Patio Furniture



Park Avenue - Front Façade



Northwest Corner of Building – Looking towards Woodward Ave.



Northeast Corner of Building



Woodward Ave Facade



Proposed Freestanding Pergola Location
With Planters

Northwest Corner – Looking South down Washington Ave



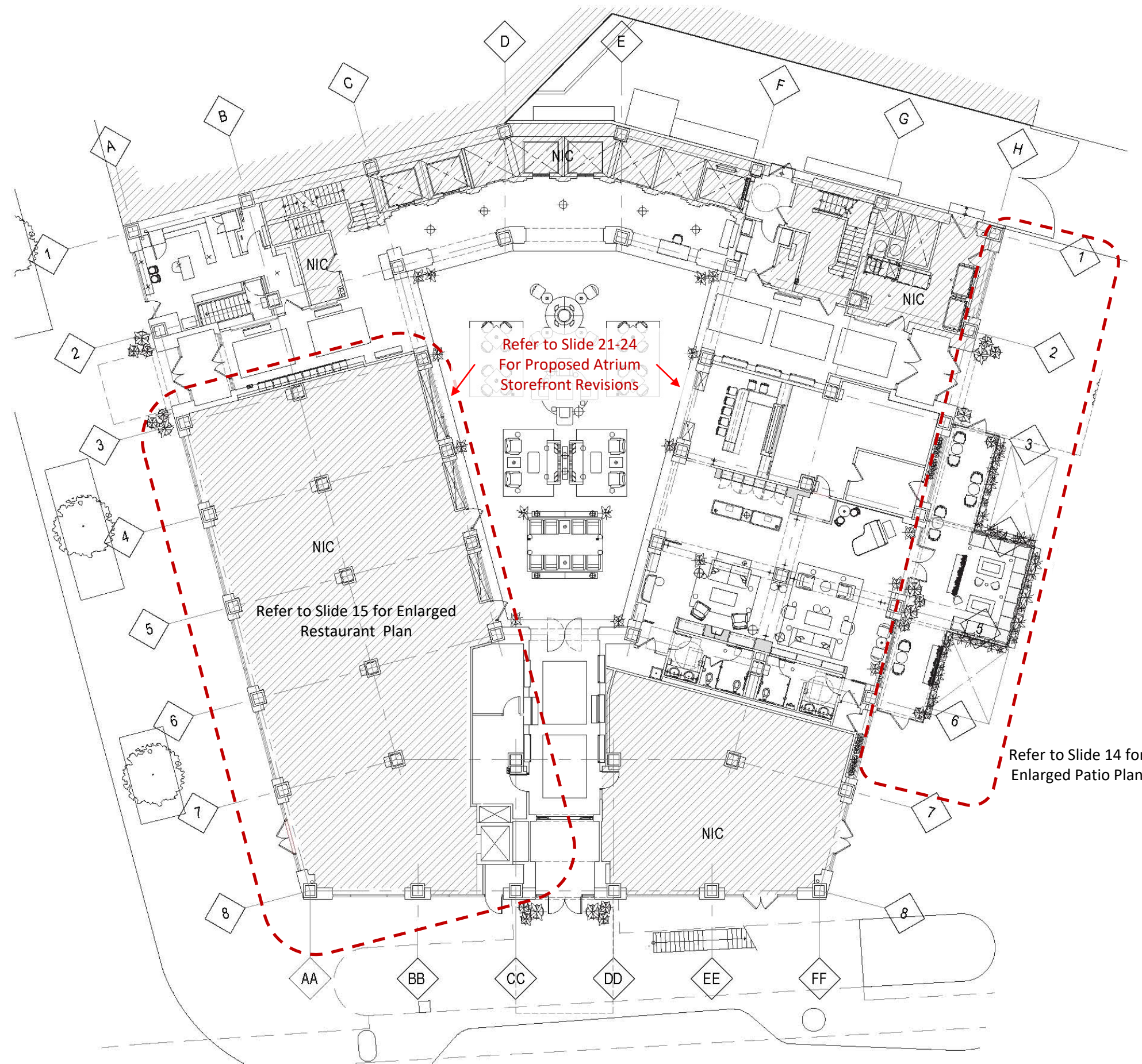
Southwest Corner – Looking North towards Grand Circus Park







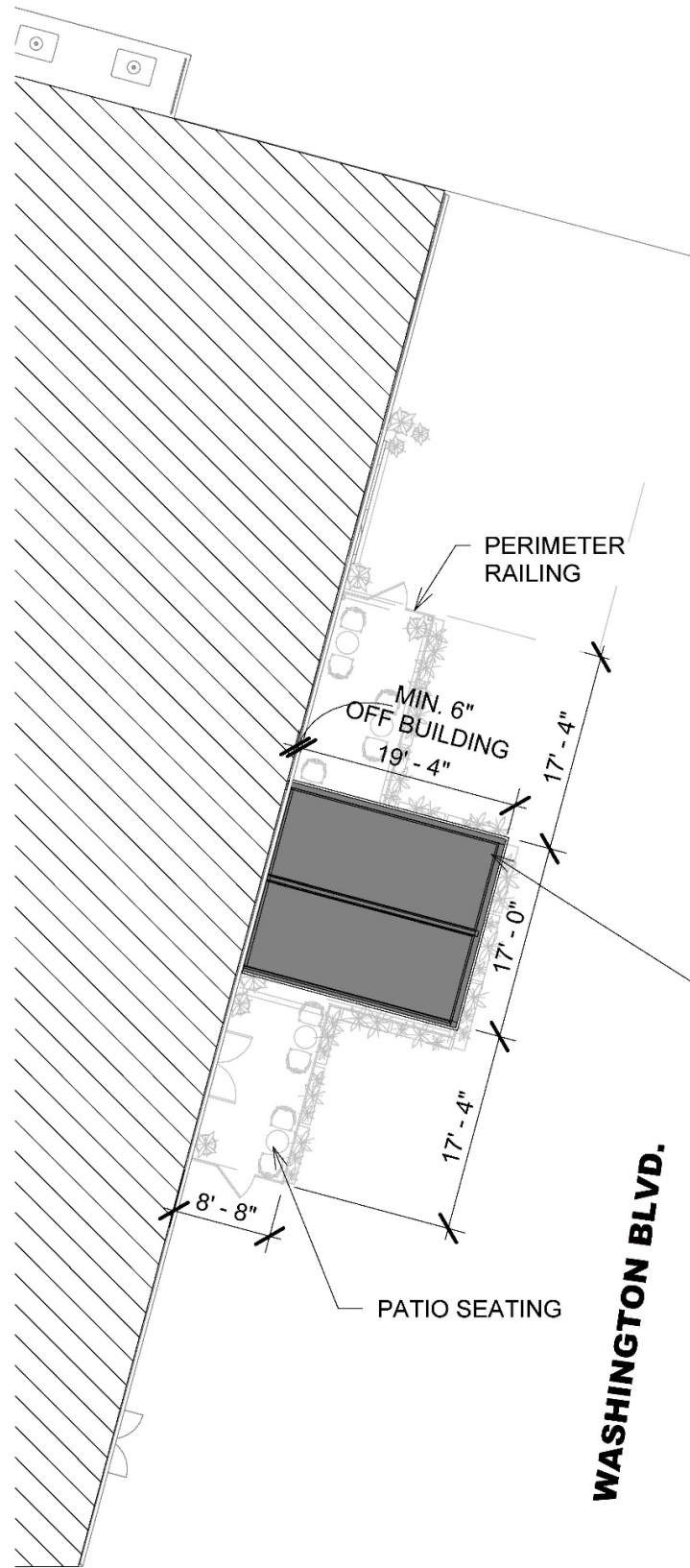




1
A103

PERGOLA PLAN

1/16" = 1'-0"



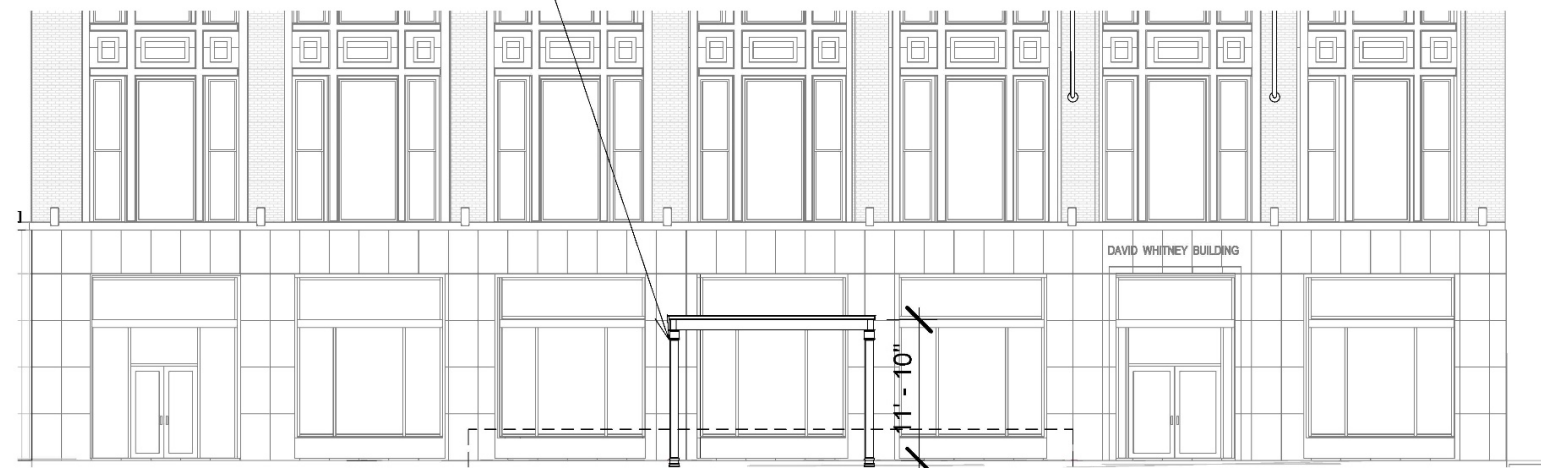
WASHINGTON BLVD.

INSPIRATION



Refer to slide 27-29 for Proposed System Specs

PROPOSED STAND-ALONE 'STRUXURE' PERGOLA SYSTEM



2

PERGOLA ELEVATION

1/16" = 1'-0"

**ARCHITECTURAL FLOOR PLAN
GENERAL SHEET NOTES**

- SEE SHEET A-111 FOR FLOOR FINISHES
- SEE SHEET A-101 FOR LIGHTING FIXTURE SCHEDULE, PLUMBING FIXTURE SCHEDULE, WASHROOM ACCESSORY SCHEDULE, ROOM FINISH SCHEDULE, AND MATERIAL AND COLOR LEGEND
- SEE SHEET A-111 FOR DOOR AND FRAME SCHEDULE AND DETAILS
- SEE SHEET A-111 FOR PARTITION TYPES
- COORDINATE ALL DIMENSIONS IN KITCHEN SPACES WITH FOOD SERVICE EQUIPMENT CONTRACTOR (FSEC)

KNAUER

Knauer Incorporated
226 Green Bay Road
Highwood, IL 60090
(847) 948-9200
www.knaufinc.com

**ARCHITECTURAL FLOOR PLAN
SHEET KEYNOTES**

E

—

D

—

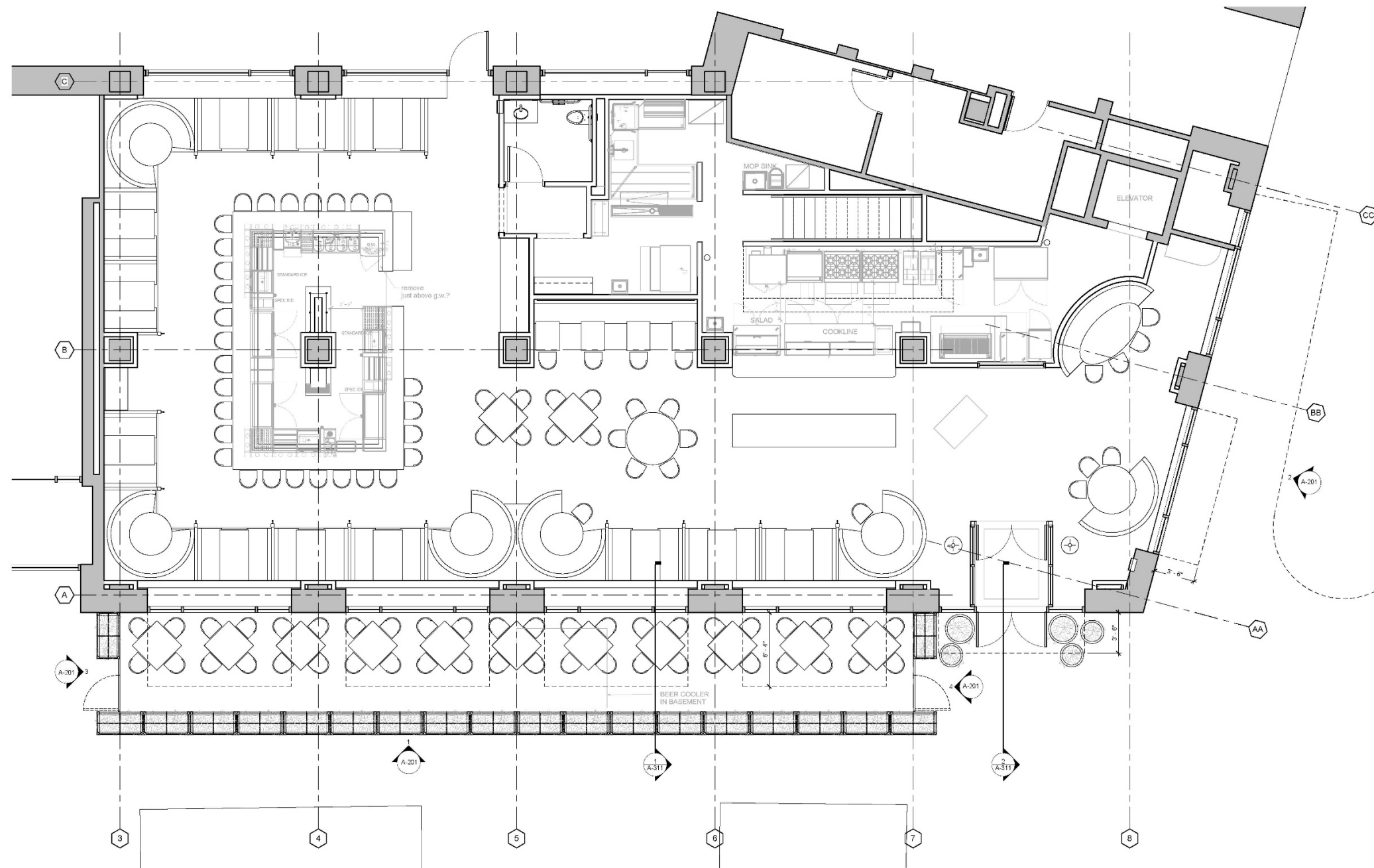
C

—

B

—

A



1 ARCHITECTURAL FLOOR PLAN
SCALE: 1/4" = 1'-0"

MARK	DATE	DESCRIPTION
ISSUED	04/12/2023	

PRESLEY'S

1 PARK AVENUE
DETROIT, MI 48226

PROJECT NO: 2673
CAD DWG FILE: C:\Users\jgasper\Desktop\2023\Presley_A101.dwg
DRAWN BY: Author
CHECKED BY: Checker

COPYRIGHT: © 2013 KNAUER INCORPORATED. ALL DRAWINGS AND WRITTEN MATERIAL APPEARING HEREIN CONSTITUTE THE ORIGINAL AND UNPUBLISHED WORK OF KNAUER INCORPORATED AND THE SAME MAY NOT BE REPRODUCED OR TRANSMITTED IN ANY FORM OR BY ANY MEANS, ELECTRONIC OR MECHANICAL, WITHOUT THE WRITTEN CONSENT OF KNAUER INCORPORATED.

SCALE: DRAWING SCALE MAY VARY. REFER TO EACH DRAWING FOR ITS SCALE.

**ARCHITECTURAL
FLOOR PLAN**

A-101

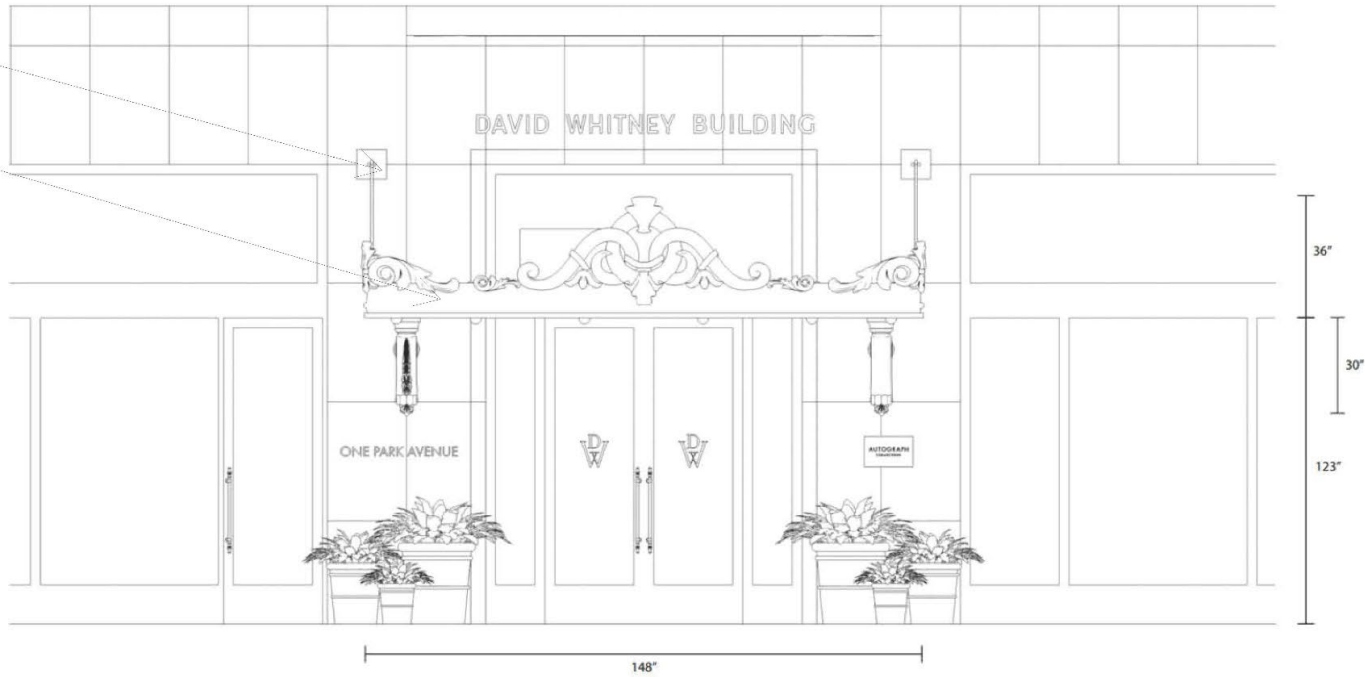


Floorplan – Restaurant Tenant

PARK ENTRANCE CANOPY

STEEL PLATE ANCHORED TO EXISTING WALL
 ORNATE DETAILING TO MIMIC THE ORIGINAL HISTORIC CANOPY DESIGN

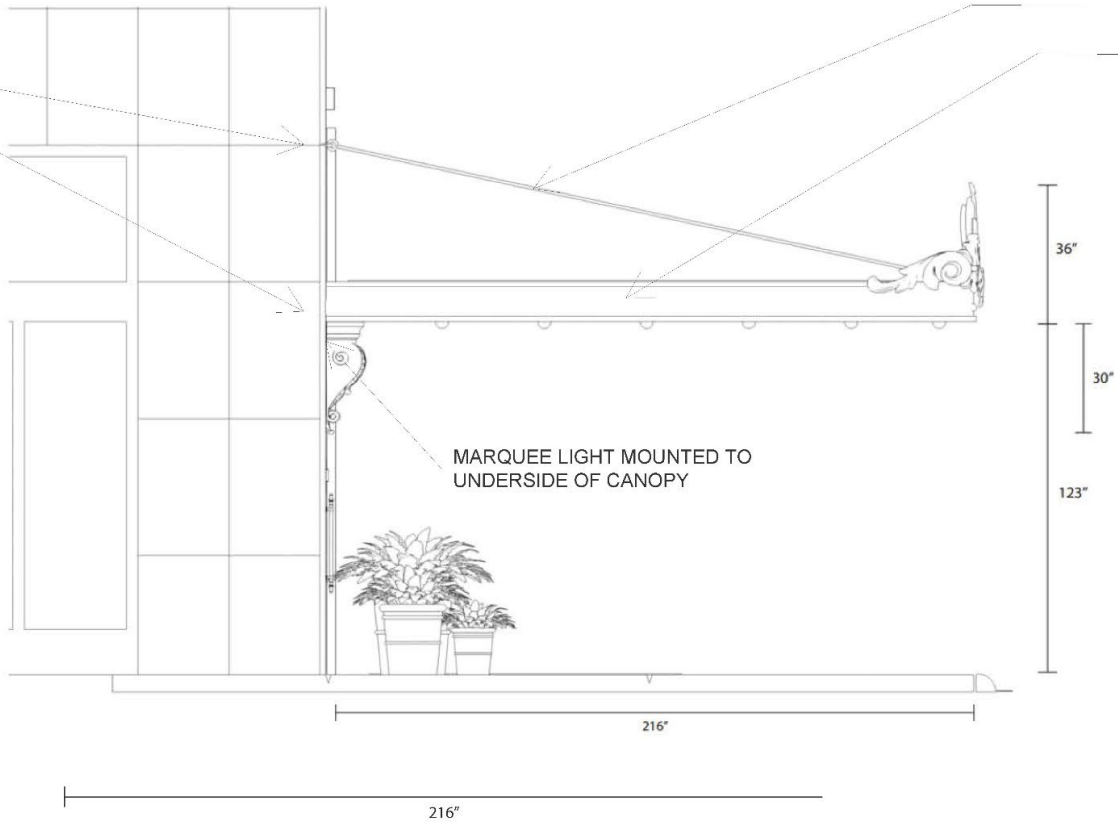
DESIRED BRONZE FINISH LOOK



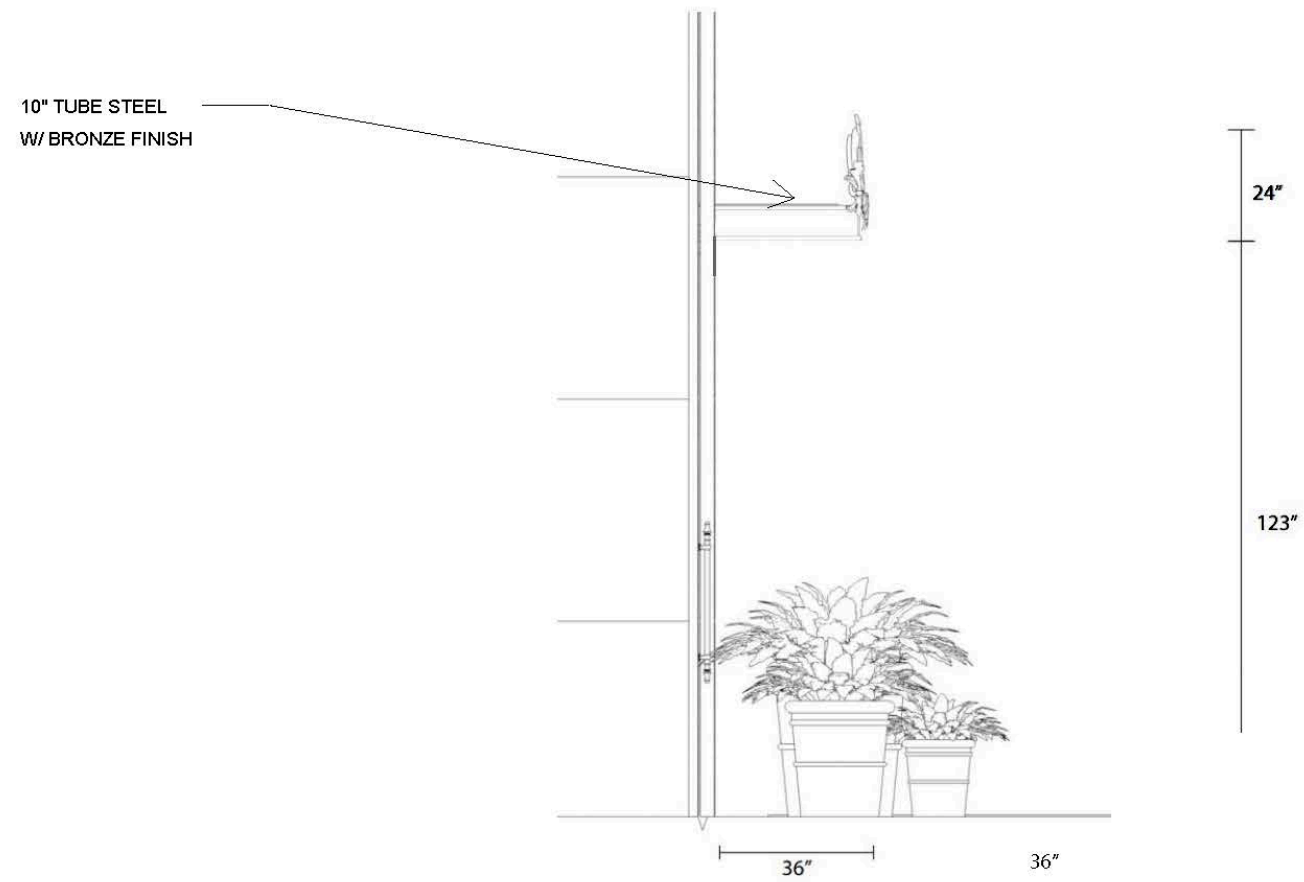
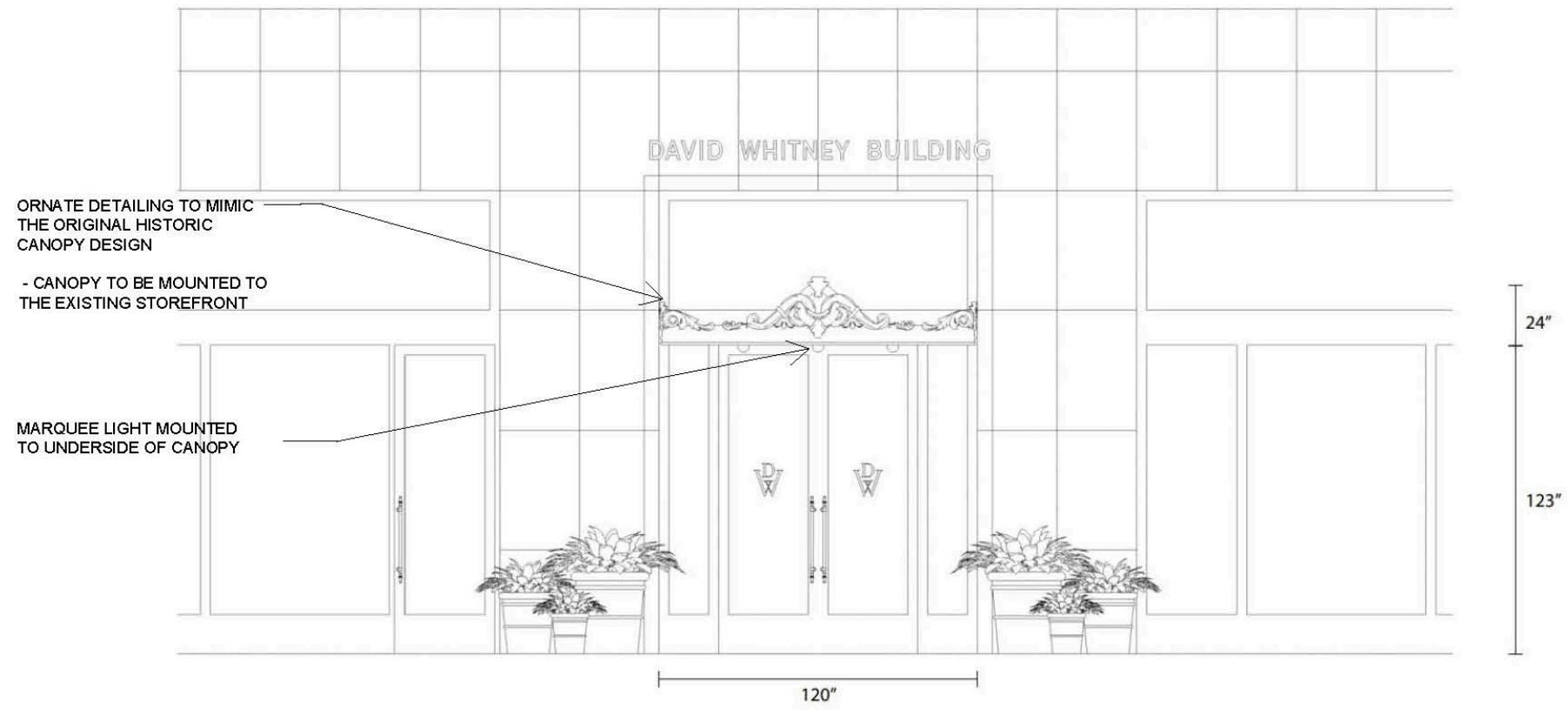
ANCHOR SYSTEM

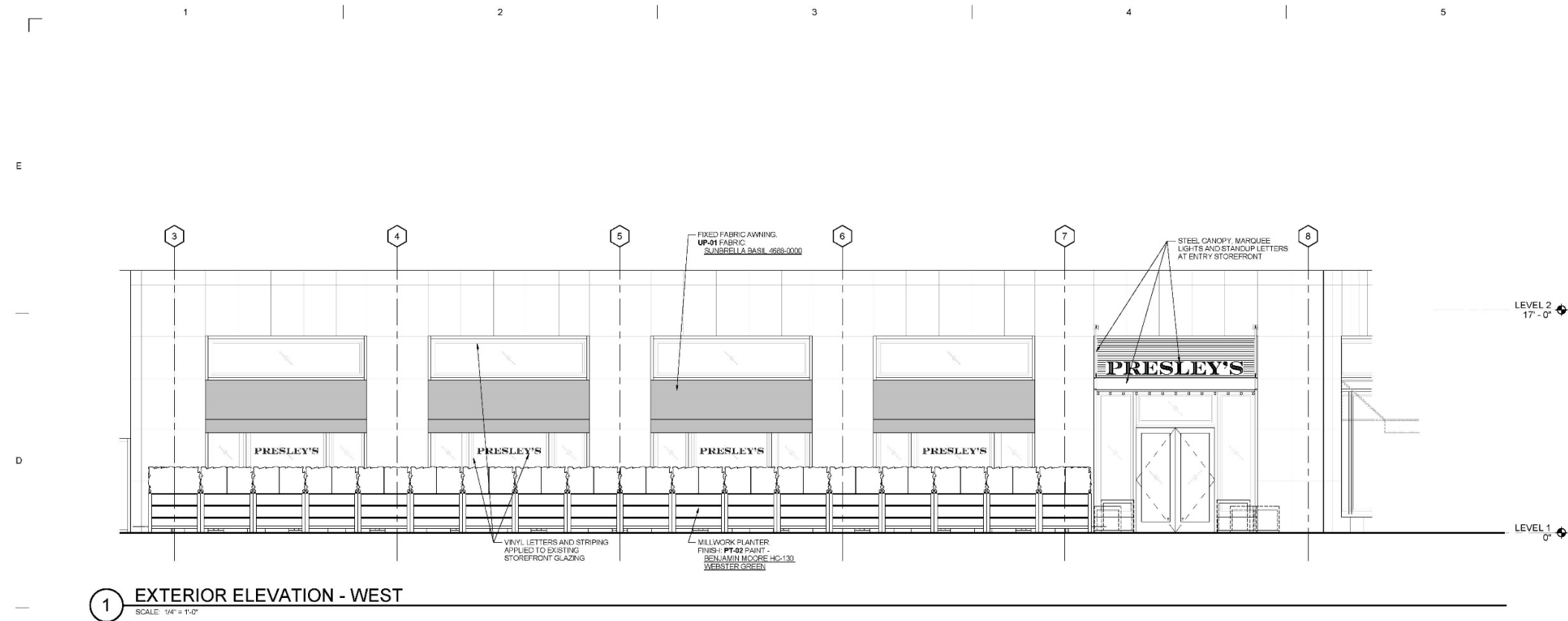
Anchor Type: HIT-RE 500V
 Anchor Diameter: 3/4
 Anchor Length: 11" Embedment
 Depth: 8"

STEEL TIE BACK RODS
 10" TUBE STEEL



WOODWARD AND WASHINGTON CANOPIES





1 EXTERIOR ELEVATION - WEST
SCALE: 1/4" = 1'-0"



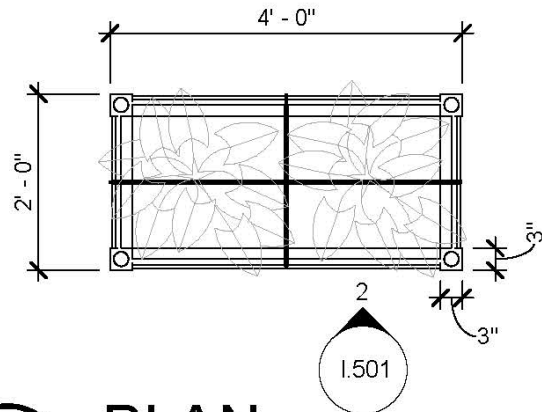
3 PATIO NORTH
SCALE: 1/4" = 1'-0"

4 PATIO SOUTH
SCALE: 1/4" = 1'-0"

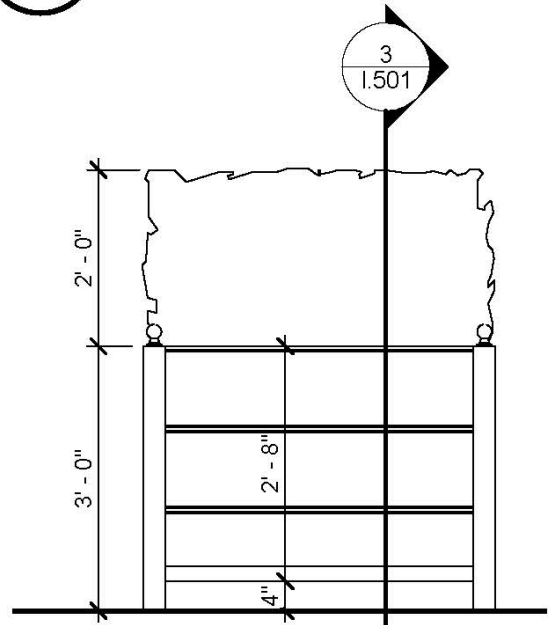
2 EXTERIOR ELEVATION - SOUTH
SCALE: 1/4" = 1'-0"

EXTERIOR ELEVATIONS GENERAL SHEET NOTES • SEE SHEET A-601 FOR LIGHTING FIXTURE SCHEDULE AND MATERIAL AND COLOR LEGEND • SEE SHEET A-611 FOR DOOR AND FRAME SCHEDULE AND DETAILS		KNAUER Knauer Incorporated 226 Green Bay Road Highland, IL 60040 (815) 948-0500 www.knaufinc.com architecture design direction														
EXTERIOR ELEVATIONS SHEET KEYNOTES																
<table border="1"> <thead> <tr> <th>MARK</th> <th>DATE</th> <th>DESCRIPTION</th> </tr> </thead> <tbody> <tr> <td>04/2/2023</td> <td></td> <td>ISSUED</td> </tr> </tbody> </table>			MARK	DATE	DESCRIPTION	04/2/2023		ISSUED								
MARK	DATE	DESCRIPTION														
04/2/2023		ISSUED														
TENANT IMPROVEMENTS FOR PRESLEY'S 1 PARK AVENUE DETROIT, MI 48226																
EXTERIOR ELEVATIONS KEY PLAN 																
<table border="1"> <tr> <td>PROJECT NO:</td> <td>3673</td> </tr> <tr> <td>CAD DWG FILE:</td> <td>C:\Users\jgasper\OneDrive\Documents\Projects\A21_2023\A21_2023.dwg</td> </tr> <tr> <td>DRAWN BY:</td> <td>Author</td> </tr> <tr> <td>CHECKED BY:</td> <td>Checker</td> </tr> <tr> <td>COPYRIGHT:</td> <td>© 2023 KNAUER INCORPORATED. ALL DIMENSIONS AND MATERIAL APPEARING HEREIN CONSTITUTE THE ORIGINAL AND UNREPLICATED WORK OF KNAUER INCORPORATED AND THE SAME MAY NOT BE DUPLICATED, USED, OR REPRODUCED WITHOUT THE WRITTEN CONSENT OF KNAUER INCORPORATED.</td> </tr> <tr> <td>SCALE:</td> <td>1/4" = 1'-0"</td> </tr> <tr> <td>SHEET TITLE:</td> <td>EXTERIOR ELEVATIONS</td> </tr> </table>			PROJECT NO:	3673	CAD DWG FILE:	C:\Users\jgasper\OneDrive\Documents\Projects\A21_2023\A21_2023.dwg	DRAWN BY:	Author	CHECKED BY:	Checker	COPYRIGHT:	© 2023 KNAUER INCORPORATED. ALL DIMENSIONS AND MATERIAL APPEARING HEREIN CONSTITUTE THE ORIGINAL AND UNREPLICATED WORK OF KNAUER INCORPORATED AND THE SAME MAY NOT BE DUPLICATED, USED, OR REPRODUCED WITHOUT THE WRITTEN CONSENT OF KNAUER INCORPORATED.	SCALE:	1/4" = 1'-0"	SHEET TITLE:	EXTERIOR ELEVATIONS
PROJECT NO:	3673															
CAD DWG FILE:	C:\Users\jgasper\OneDrive\Documents\Projects\A21_2023\A21_2023.dwg															
DRAWN BY:	Author															
CHECKED BY:	Checker															
COPYRIGHT:	© 2023 KNAUER INCORPORATED. ALL DIMENSIONS AND MATERIAL APPEARING HEREIN CONSTITUTE THE ORIGINAL AND UNREPLICATED WORK OF KNAUER INCORPORATED AND THE SAME MAY NOT BE DUPLICATED, USED, OR REPRODUCED WITHOUT THE WRITTEN CONSENT OF KNAUER INCORPORATED.															
SCALE:	1/4" = 1'-0"															
SHEET TITLE:	EXTERIOR ELEVATIONS															
18 A-201																

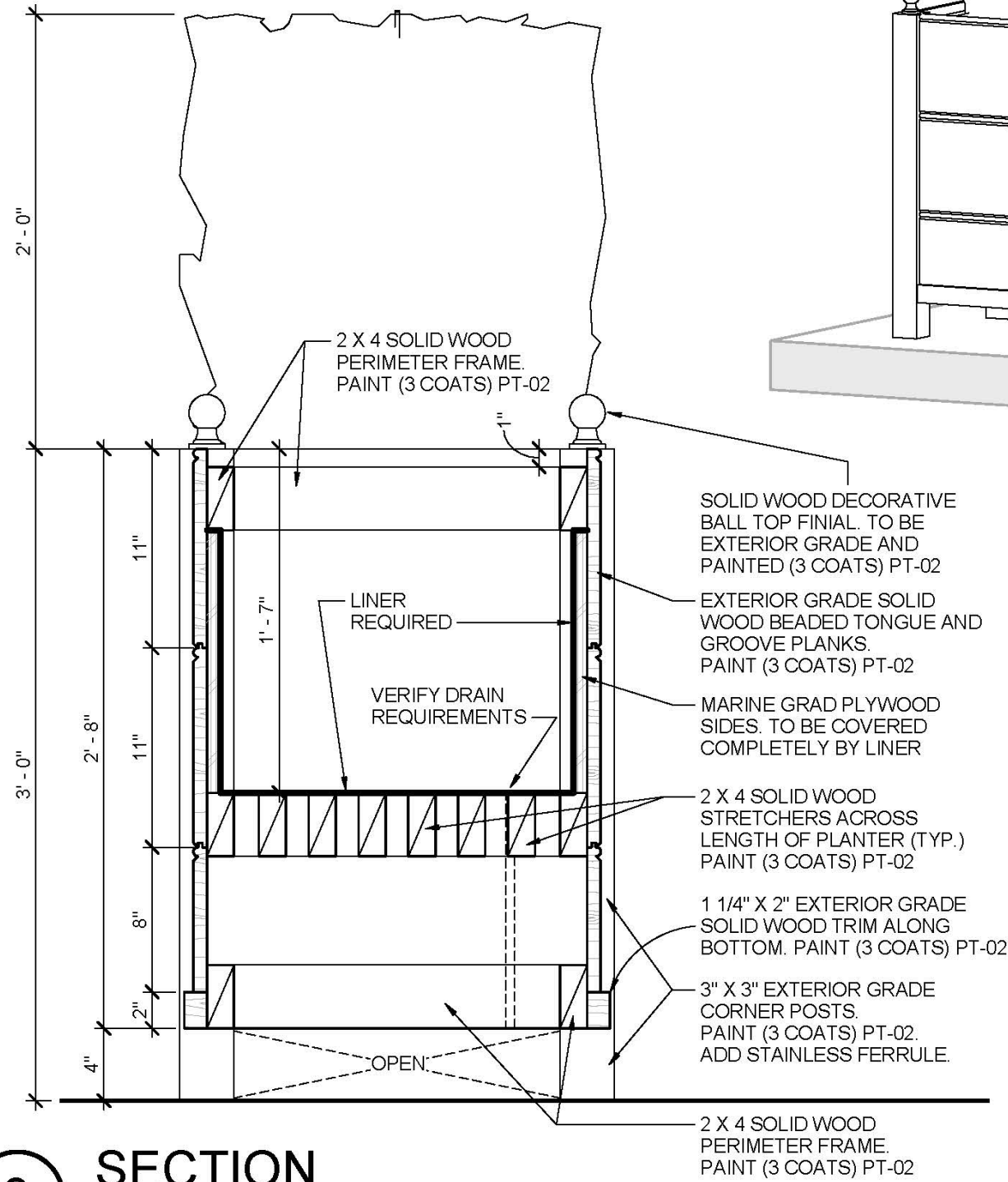




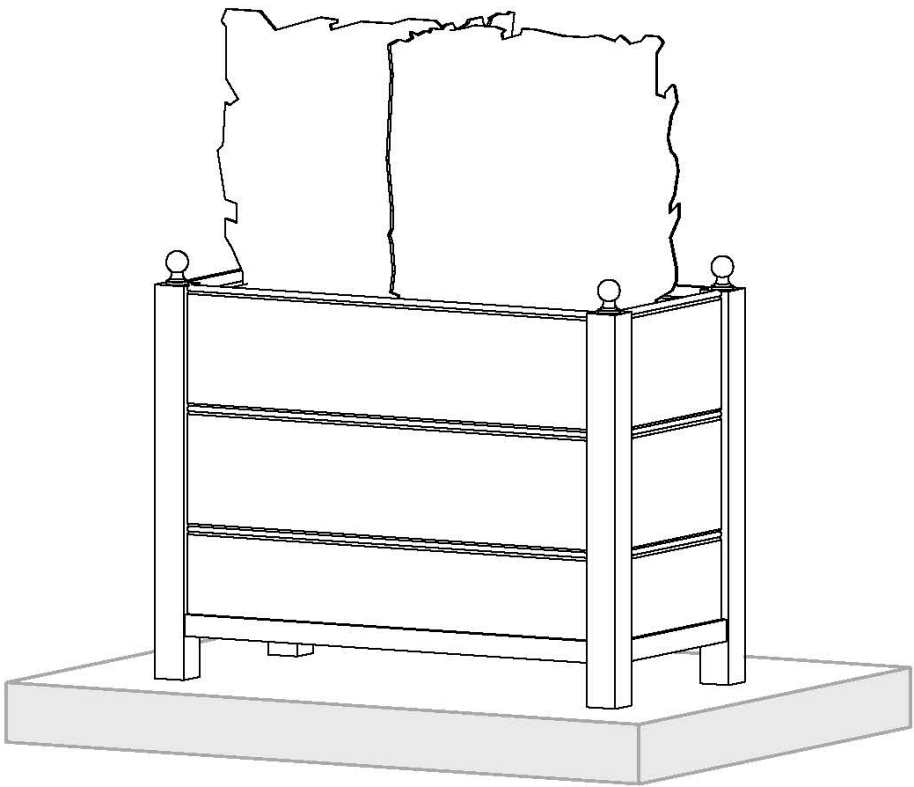
1 PLAN
SCALE: 1/2" = 1'-0"



2 ELEVATION
SCALE: 1/2" = 1'-0"



3 SECTION
SCALE: 1 1/2" = 1'-0"





Interior Atrium Storefront Elevation – Refer to Slide 22 for Proposed Alterations



Existing Storefront to Remain – No Alterations to glass or door location. Proposed wood panel display enclosure indicative of original storefront retail display beyond. Provided to allow restaurant interior wall space within tenant space. Finishes on new work to match existing mahogany.

Existing Storefront to Remain – No Alterations

Storefront Revised – Removal of door. Proposed layout to match existing storefront system on opposite side of atrium. Two equal glass panels below transom line. Center vertical above and below transom. Materials to match existing.



Proposed Alterations – Revised Door Locations

Interior Atrium Storefront Elevation – Refer to Slide 24 for Proposed Alternations



Proposed Removal of Existing Door to Create Center Passage. Vertical Framing to extend into transom following methodology of other storefronts. Metal grating below to be custom to match existing at new sizes. Finishes on new work to match existing mahogany.

Proposed Removal of Existing Door and Side Panel to Create Opening. Hotel registration beyond and main path of travel. Single panel transom at height and materials to match existing mahogany.

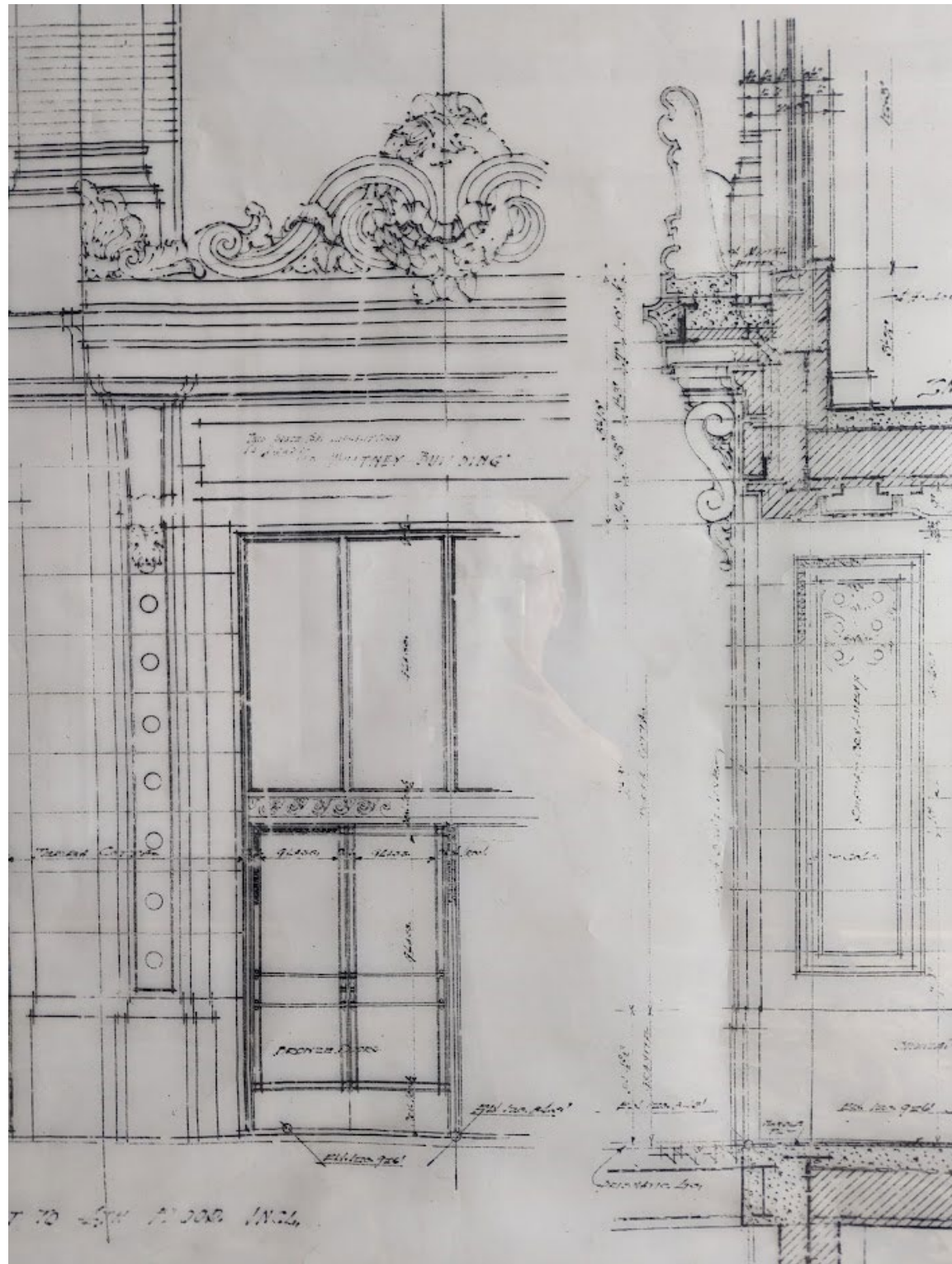
Existing Storefront to Remain – No Alterations. Existing design provided direction for altered storefront across atrium.



1515 Woodward Ave



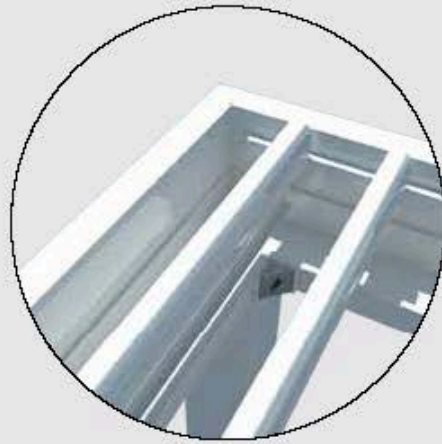
1529 Woodward Ave



Burnham Design Drawings- Inspired Detail at Canopy



Burnham Design Rendering- Inspired Detail at Canopy



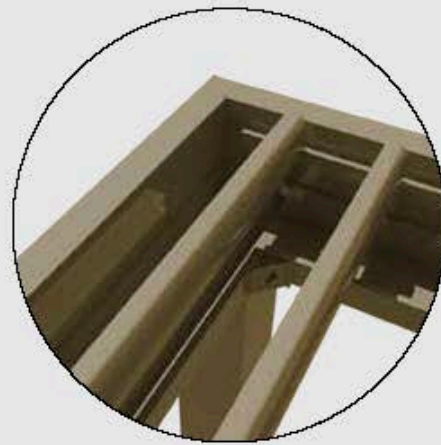
WHITE: STANDARD /



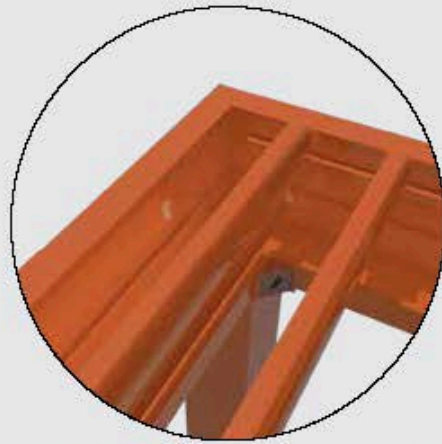
BEIGE: STANDARD /



BRONZE: STANDARD /



ADOBE: STANDARD /



STRUXURE: CUSTOM /



WOOD TEXTURE: ANY COLOR /

Provide StruXure with your RAL number and we can custom color match.

Material & Protective Coating

MATERIAL

Aluminum 6063-T6, StruXure, Inc. MSDS

SUBCATEGORY

6000 Series Aluminum Alloy; Aluminum Alloy; Metal; Nonferrous Metal

COMPOSITION NOTES

Aluminum content reported is calculated as remainder. Composition information provided by the Aluminum Association.

KEY WORDS

UNS A96063; ISO AlMg0.5Si; Aluminium 6063-T6; AA6063-T6

COMPONENT	WT. %	COMPONENT	WT. %	COMPONENT
Al	Max 97.5	Mg	0.45 - 0.9	Si
Cr	Max 0.1	Mn	Max 0.1	Ti
Cu	Max 0.1	Other, each	Max 0.05	Zn
Fe	Max 0.35	Other, total	Max 0.15	

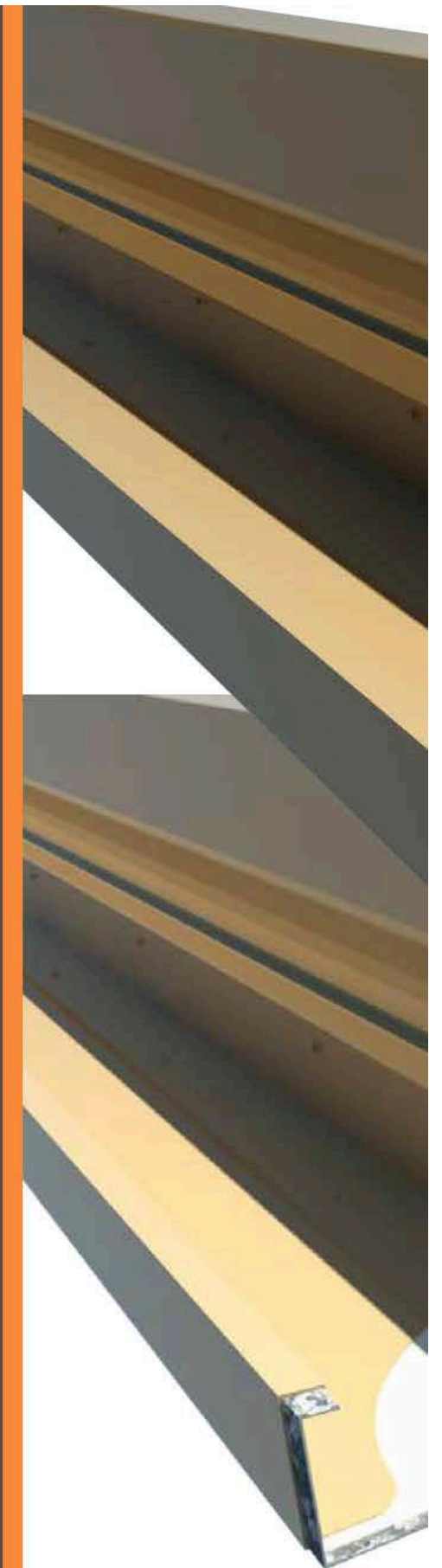
Material Notes: Data points with the AA note have been provided by the Aluminum Association, Inc.

PROTECTIVE COATING

The premium Powder Coating Process is aesthetically pleasing, produces a durable uniform finish, and can be custom formulated for a range of finishes, including the on trend matte finish.

This extensive line of Powders is manufactured to meet the increasing demands of the appliance and industrial markets. They are the ideal solution for smoothness, low-bake, durability, and physical property requirements. An unsurpassed application development program enables consistently friendly use on a variety of substrates, including extruded aluminum. The coating gives:

- Excellent Exterior Durability
- Available in a Wide Range of Colors
- Good Chemical Resistance
- VOC's are Essentially Zero





1. Product Name

- Arcadia™ Pivot

2. Manufacturer

Arcadia Building Products, Inc.
154 Ethan Allen Drive
Dahlonega, GA 30533
Phone: 800-303-5248
678-208-6762
Fax: 678-208-6764
E-mail: info@arcadiabp.com
Web: www.arcadiabp.com

3. Product Description

Basic Use

The Arcadia Pivot is a unique exterior sun/shade shelter/structure with operable louvers that pivot with a full 170-degree range of motion in place of a roof or rafters.

The Arcadia Pivot adjusts to maximize the comfort and use of any outdoor space. By adjusting the louvers, the user can let sunlight into the space below or keep sunlight out for complete shade. With the benefits of sky views and ventilation, the Arcadia Pivot provides protection from direct, unbroken sunlight.

The original Arcadia System has been improved and perfected since its inception in 2011. Its award-winning pivot design gives a full 170-degree range of motion to provide a cool oasis and protection from the elements. Now available with a slide design that allows full sky view and Arcadia's iLouver technology.

With the iLouver smart phone app, the Arcadia structure can be controlled from the palm of your hand and the Pivot can intuitively control the effects of the weather.

Composition and Materials

Extruded aluminum, 6063-T6 and 6061-T6 and stainless steel 304 alloy components, screws and bolts.

Features and Benefits

- Made in America
- Smart motor technology
- A full 170 degrees of motion
- Rain and wind programmability
- Patented interlocking louver design
- App-driven iLouver operating system
- Protection from UV exposure and other weather elements
- Arcadia Care maintenance and cleaning program available



- Fully extruded aluminum components are lightweight, strong, non-corrosive, resilient, reflective, non-combustible, recyclable, and accept finishes
- 360 degree integrated gutter system with interlocking louvers that channel water into a fully-extruded five-inch gutter system that encompasses the entire perimeter of each zone, providing more efficient water management with gutters closed
- Allows maximum light into a space with the louvers fully opened; minimizes resistance and uplift in high winds
- Arcadia's Premium Powder Coating Process is PPG's Enviroacryl® and Envirocron® powder coatings that are aesthetically pleasing, produce a durable uniform finish and can be custom formulated for a range of finishes, including Arcadia's matte finish; PPG's Ultradurable Polyester Powder Coatings provide a combination of good physical and chemical resistance properties with excellent resistance to outdoor weathering
 - VOCs are essentially zero
 - Good chemical resistance
 - Excellent Exterior durability
 - Available in a wide range of colors and finishes
 - Specifically formulated to meet the requirements of AAMA 2604

Colors

Standard colors:

- White
- Beige
- Bronze
- Adobe

Custom solid and woodgrain RAL colors available.

Table 1—Motor Specifications (2000N)

Input voltage (VDC)	12
Load	
Static load (Fx) maximum	2000 (450 pounds)
Dynamic load (Fx) maximum	2000 (450 pounds)
Stroke length	custom
Current	
Current consumption, rated load (A)	45/22
Current consumption, stall/in-rush (A)	14/80
Speed, no load	5.8 mm/23 seconds
Speed, rated load	4 mm/16 seconds
Operation temperature limits	-13 to 167 degrees F (-25 to 75 degrees C)
Dual cycle, maximum	10%
Average life	10K cycles
Sound level	<45 dBA
Lead screw type	Acme
Protection class	IP67
Certificates	CE (EN60601-1) UL (UL60601-1)

Sizes/Dimensions

The finished size of an Arcadia Pivot system is always custom. These are component sizes.

Louver Lengths (in inches)

- 89
- 113
- 137

Posts (in inches)

- 4 × 4 × 1/8
- 4 × 4 × 1/4
- 6 × 6 × 1/8
- 6 × 6 × 1/4

Post Bases and Post Base Bracket (in inches)

- 4 × 4
- 6 × 6
- 8 × 8
- 6 × 6 (post base bracket)

Beams (in inches)

- 2 × 8 × 1/8
- 2 × 10 × 1/8

Post-to-Beam Connectors (in inches)

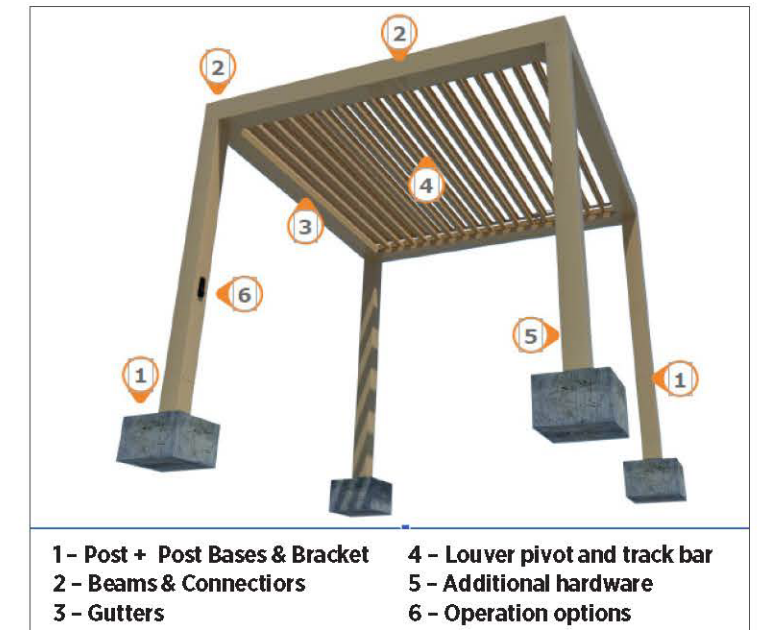
- 4 × 4
- 6 × 6
- 8 × 8
- Beam corner connector
- U-channel connector

Motor Specifications

See Table 1.

Options/Accessories

- Ceiling fans
- Accent lighting
- Custom colors
- Wood/faux cladding
- Custom columns
- Cornice style facade
- Pergola cuts/corbel ends
- Motorized solar screens



- 1 - Post + Post Bases & Bracket
- 2 - Beams & Connectors
- 3 - Gutters
- 4 - Louver pivot and track bar
- 5 - Additional hardware
- 6 - Operation options

- Outdoor curtains
- Outdoor heating and cooling
- Manual operation
- Smartphone app

System Information

Complete system brochure available [here](#).

4. Technical Data

Applicable Standards

American Architectural Manufacturers Association (AAMA)

- **AAMA 2604** Voluntary Specification, Performance Requirements and Test Procedures for High Performance Organic Coatings on Aluminum Extrusions and Panels (with Coil Coating Appendix)

ASTM International

- **ASTM B117** Standard Practice for Operating Salt Spray (Fog) Apparatus
- **ASTM E84** Standard Test Method for Surface Burning Characteristics of Building Materials
- **ASTM D522** Standard Test Methods for Mandrel Bend Test of Attached Organic Coatings
- **ASTM D523** Standard Test Method for Specular Gloss
- **ASTM D968** Standard Test Methods for Abrasion Resistance of Organic Coatings by Falling Abrasive
- **ASTM D2247** Standard Practice for Testing Water Resistance of Coatings in 100% Relative Humidity
- **ASTM D2794** Standard Test Method for Resistance of Organic Coatings to the Effects of Rapid Deformation (Impact)
- **ASTM D3359** Standard Test Methods for Rating Adhesion by Tape Test
- **ASTM D3363** Standard Test Method for Film Hardness by Pencil Test





- **ASTM D4214A** Standard Test Methods for Evaluating the Degree of Chalking of Exterior Paint Films

C-UL

- **Bluetooth CE (CAN ICES-3 (B)/NMB-3(B))**

International Electrotechnical Commission (IEC)E

- **IP67, CE (EN 60601-1)**

UL International

- **UL (UL60601-1)**

Approvals

- **FCC: WLL report # 14118-01 Rev 0** (Arcadia Smart Device Control)
- **Miami-Dade County, Florida, Notice of Acceptance**
- **US Army Corps of Engineers (USACE)**

Environmental Considerations

This product may contribute to LEED® points.

5. Installation

Weather/ambient considerations

Above freezing, dry, safe working environment. Verify that site conditions are acceptable for installation. Do not proceed with installation until unacceptable conditions are corrected.

Please consult with the manufacturer for complete installation information and instructions.

6. Availability and Cost

Please contact manufacturer for availability and pricing.

7. Warranty

Arcadia offers a limited lifetime warranty. Arcadia Building Products, Inc. extends a transferable limited warranty to the structural components and moveable accessories of our products.

Arcadia warrants our products for the lifetime of each product against manufacturer's defects in materials.

Electrical components and drive motor: five years.

Manual operator: ten years.

Structural components: 15 years.

8. Maintenance

Arcadia Louvered Roof Systems are easy to maintain. Generally, normal rainfall is sufficient to keep its appearance clean. If cleaning is required, we recommend the following steps. Attention should be given to areas under eaves, porches, awnings, and other overhangs that have limited exposure to the natural cleansing effect of rainfall.

Material and Furniture Selections – Pergola System

Moderate Dirt

An occasional washing with clear water using a garden hose and soft-bristled brush is recommended, such as a long handled, car-washing brush is ideal for this purpose.

Heavier Dirt Accumulation

Wash in the manner indicated above, but use the following solution:

- 1/3 cup detergent (e.g. Tide®)
- 2/3 cup trisodium phosphate powder (TSP)
- 1 gallon of water

Mildew Accumulation

Mildew can collect on surfaces of all types of building products and is often evident on surfaces that have not been properly maintained. Normally, mildew will appear as black spots. Mildew is easy to remove by using the following cleaning solution:

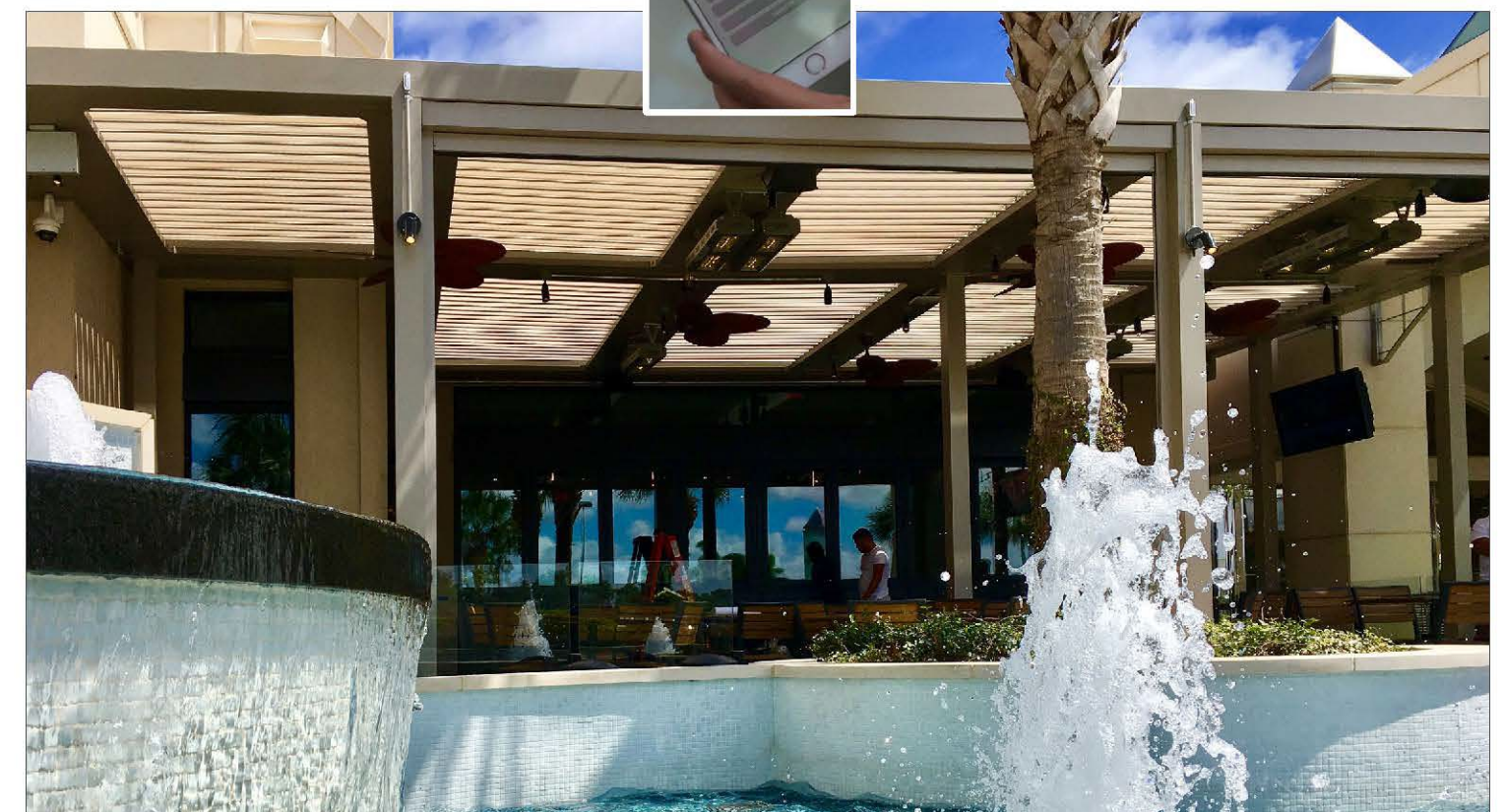
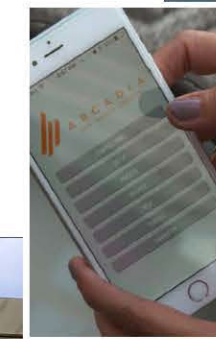
- 1/3 cup detergent (e.g. Tide)
- 2/3 cup trisodium phosphate powder (TSP)
- 1 quart sodium hypochloride 5% solution (e.g. Clorox®)
- 3 quarts water

Environmental Black Streaking

Black streaking can also collect on the surface of a structure. Black streaking can be removed by using Gutter Zap 4, which can be purchased from the dealer that installed your unit.

Caulking Compounds, Tar, etc.

Use mineral spirits in reasonable amounts, apply directly to foreign substance. Rinse the area thoroughly with water immediately after cleaning.



The Patio Seating



Superior Seating
Black Cast Iron Table Base AM-R-BLK
Quartz Tabletop – Slate



L. Drucker
Saint Antoine Aluminum Outdoor Side Chair

architecture
design
direction

KNAUER

Presley's – Design Sketchbook

Davis Hospitality Group

62

Restaurant Patio Furniture Selections