

**LEGEND**

- ☐ PROPERTY CORNER POINT
- CONCRETE MONUMENT
- L1 LIMITED COMMON ELEMENT TO RESPECTIVE UNIT NUMBER
- ⊞ GAS METER
- ⊞ ELECTRIC METER
- ⊞ AC UNIT
- ⊙ UTILITY POLE
- ⊙ SHUT OFF VALVE
- ⊙ FIRE HYDRANT
- WM WATER
- SEWER SEWER
- G GAS MAIN
- E U.G. ELECTRIC
- OH O.H. ELECTRIC
- T TELEPHONE
- C CABLE
- OVERHANG

CONCRETE MONUMENT IS A 1/2 INCH IRON ROD THAT IS 36 INCHES IN LENGTH ENCASED IN CONCRETE A DIAMETER OF 4 INCHES.

**UTILITY SOURCES**

ELECTRIC	DTE ENERGY
GAS	DTE GAS
PHONE	AT&T
SEWER & WATER	CITY OF DETROIT WATER & SEWER DEPT.
PUBLIC LIGHTING	DETROIT PUBLIC LIGHTING DEPT.



**LOCATION MAP**  
NOT TO SCALE

**NOTES**

THE EXISTING UTILITIES SHOWN HEREON ARE IN ACCORDANCE WITH THE RECORDS OF THE UTILITY SOURCES INDICATED BELOW OR FROM FIELD OBSERVATIONS BY SPALDING DeDECKER. NO GUARANTEE IS EITHER EXPRESSED OR IMPLIED AS TO THE COMPLETENESS OR ACCURACY THEREOF. PLANS ARE SHOWN WITH RECORD INFORMATION ONLY. ANY UNDERGROUND UTILITIES WITHOUT SIZES WERE PROVIDED BY THE UTILITY SOURCE.

UNITS 1 AND 2 MUST BE BUILT.

**UTILITY PLAN  
ELIOT IN THE PARK**



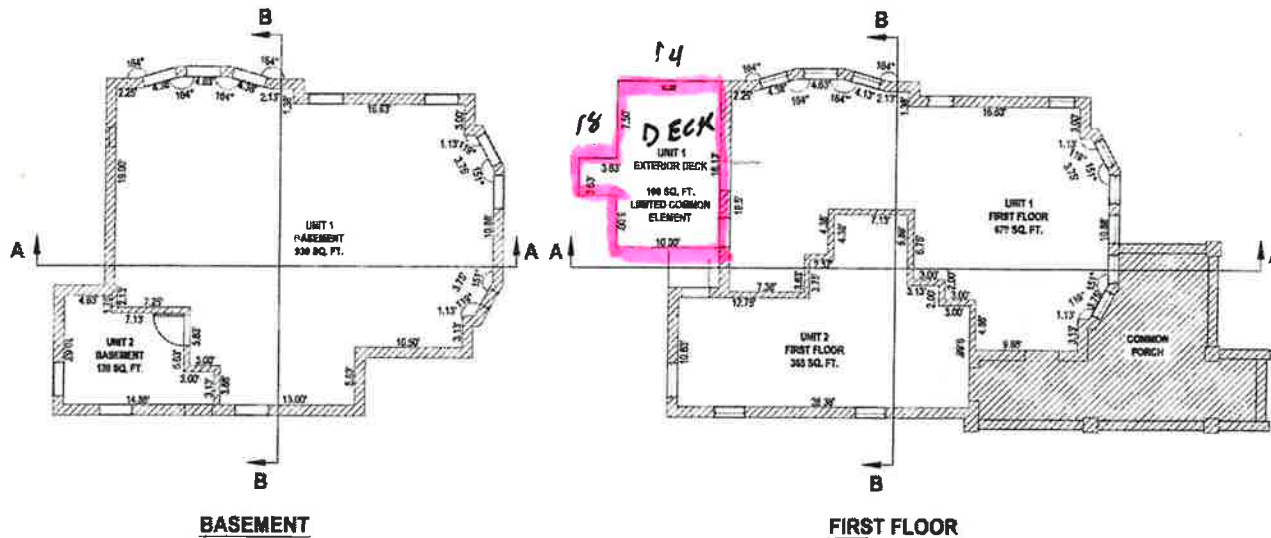
**SPALDING DeDECKER**

Engineering and Surveying  
Excellence Since 1954

905 SOUTH BLVD. EAST  
ROCHESTER HILLS, MI 48307

PROPOSED FEBRUARY 21, 2020  
"MUST BE BUILT"

JOB No. SM19-169  
SHEET 4



**LOCATION MAP**  
NOT TO SCALE

**NOTES**

- INFORMATION AS SHOWN HAS BEEN OBTAINED FROM ARCHITECTURAL PLANS PREPARED BY: PUSH DESIGN AND RECEIVED BY SPALDING DeDECKER.
- STRUCTURAL SUPPORTS, MECHANICAL CHASES AND AIR SHAFTS NECESSARY FOR THE OPERATION OF THE BUILDING ARE DESIGNATED AS GENERAL COMMON ELEMENTS.
- ALL FLOORS, CEILINGS AND WALLS ARE APPROXIMATELY 90 DEGREES TO EACH OTHER UNLESS OTHERWISE NOTED. WALLS ARE 8" THICK UNLESS MARKED OTHERWISE.
- UNIT AREA SET FORTH IN THE CONDOMINIUM SUBDIVISION PLAN MAY BE DIFFERENT FROM UNIT AREAS FOR CONSTRUCTION PURPOSES OR ON ARCHITECTURAL PLANS OF UNITS SINCE THE STANDARDS FOR MEASURING UNIT AREAS UNDER THE ACT ARE DIFFERENT FROM THOSE USED FOR OTHER PURPOSES.
- UNITS 1 AND 2 MUST BE BUILT.
- ALL DOORWAYS AND WINDOWS ARE GENERAL COMMON ELEMENTS AS DESCRIBED IN THE MASTER DEED. COMMON PORCH IS A GENERAL COMMON ELEMENT.
- SEE SHEET 7 FOR BUILDING SECTIONS.

LEGEND	
	GENERAL COMMON ELEMENT
	BUILDING CORNER COORDINATE
	LIMITS OF OWNERSHIP
<b>1</b>	UNIT NUMBER
XXXXX SF	UNIT AREA

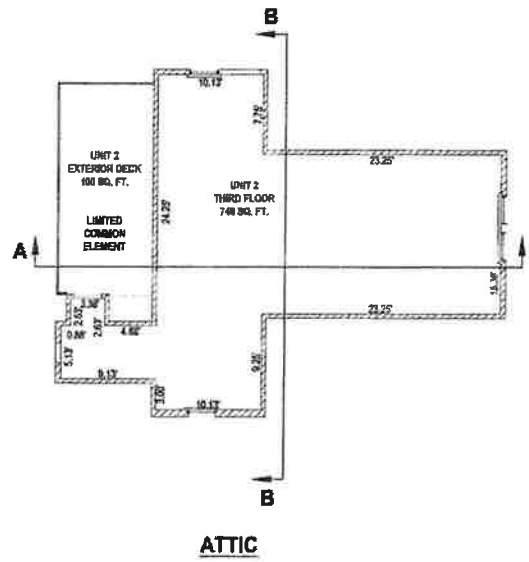
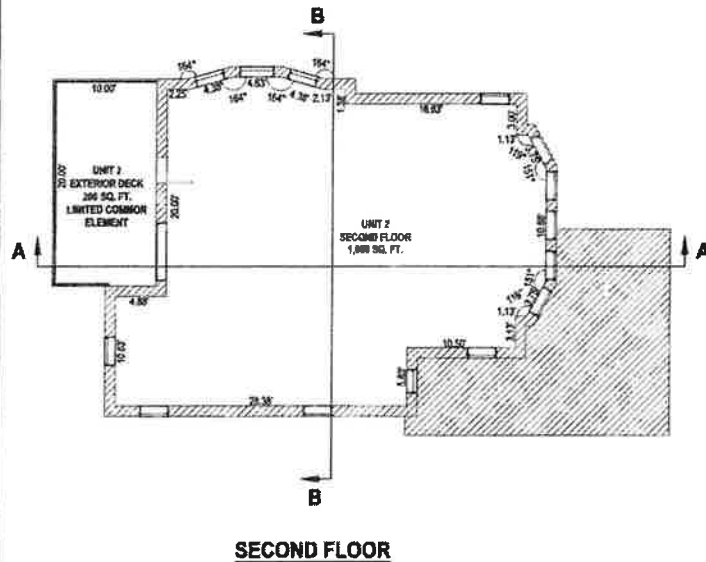
**BASEMENT AND  
FRIST FLOOR PLANS  
ELIOT IN THE PARK**



**SPALDING  
DeDECKER**  
Engineering and Surveying  
Excellence Since 1954  
905 SOUTH BLVD. EAST  
ROCHESTER HILLS, MI 48307

PROPOSED FEBRUARY 21, 2020  
"MUST BE BUILT"

JOB No. SM19-169  
SHEET 5



**NOTES**

INFORMATION AS SHOWN HAS BEEN OBTAINED FROM ARCHITECTURAL PLANS PREPARED BY: PUSH DESIGN AND RECEIVED BY SPALDING DeDECKER.

STRUCTURAL SUPPORTS, MECHANICAL CHASES AND AIR FASHES NECESSARY FOR THE OPERATION OF THE BUILDING ARE DESIGNATED AS GENERAL COMMON ELEMENTS.

ALL FLOORS, CEILINGS AND WALLS ARE APPROXIMATELY 90 DEGREES TO EACH OTHER UNLESS OTHERWISE NOTED. WALLS ARE 8" THICK UNLESS MARKED OTHERWISE.

UNIT AREA SET FORTH IN THE CONDOMINIUM SUBDIVISION PLAN MAY BE DIFFERENT FROM UNIT AREAS FOR CONSTRUCTION PURPOSES OR ON ARCHITECTURAL PLANS OF UNITS SINCE THE STANDARDS FOR MEASURING UNIT AREAS UNDER THE ACT ARE DIFFERENT FROM THOSE USED FOR OTHER PURPOSES.

UNITS 1 AND 2 MUST BE BUILT.

ALL DOORWAYS AND WINDOWS ARE GENERAL COMMON ELEMENTS AS DESCRIBED IN THE MASTER DEED. COMMON PORCH IS A GENERAL COMMON ELEMENT.

SEE SHEET 7 FOR BUILDING SECTIONS.

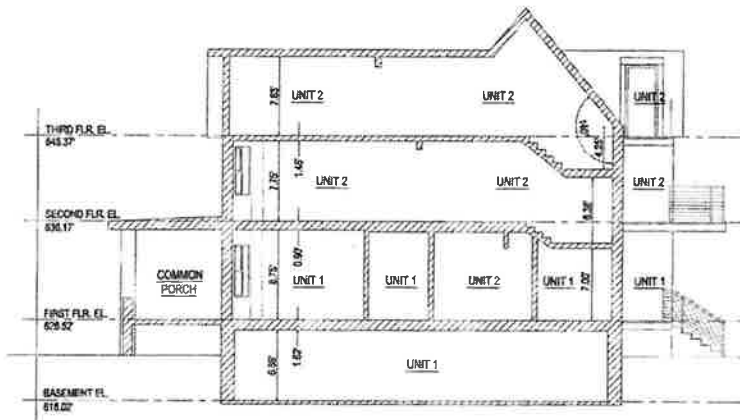
**LEGEND**

	GENERAL COMMON ELEMENT
	BUILDING CORNER COORDINATE
	LIMITS OF OWNERSHIP
<b>1</b>	UNIT NUMBER
XXXXX.SF	UNIT AREA

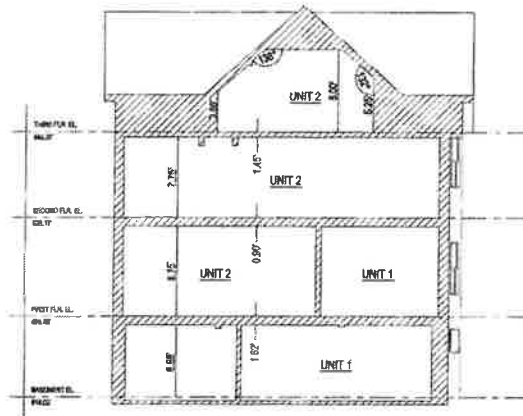
**SECOND AND ATTIC FLOOR PLANS ELIOT IN THE PARK**

**SPALDING DeDECKER**  
Engineering and Surveying  
Excellence Since 1954  
905 SOUTH BLVD. EAST  
ROCHESTER HILLS, MI 48307

PROPOSED FEBRUARY 21, 2020      JOB No. SM19-169  
"MUST BE BUILT"      SHEET 6

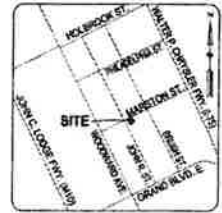


**SECTION A**



**SECTION B**

LEGEND	
	LIMITED COMMON ELEMENT
	GENERAL COMMON ELEMENT
	BUILDING CORNER COORDINATE
	LIMITS OF OWNERSHIP
<b>1</b>	UNIT NUMBER



**LOCATION MAP**  
NOT TO SCALE

**NOTES**

INFORMATION AS SHOWN HAS BEEN OBTAINED FROM ARCHITECTURAL PLANS PREPARED BY: PUSH DESIGN AND RECEIVED BY SPALDING DeDECKER.

STRUCTURAL SUPPORTS, MECHANICAL CHASES AND AIR SHAFTS NECESSARY FOR THE OPERATION OF THE BUILDING ARE DESIGNATED AS GENERAL COMMON ELEMENTS.

ALL FLOORS, CEILINGS AND WALLS ARE APPROXIMATELY 90 DEGREES TO EACH OTHER UNLESS OTHERWISE NOTED.

UNIT AREA SET FORTH IN THE CONDOMINIUM SUBDIVISION PLAN MAY BE DIFFERENT FROM UNIT AREAS FOR CONSTRUCTION PURPOSES OR ON ARCHITECTURAL PLANS OF UNITS SINCE THE STANDARDS FOR MEASURING UNIT AREAS UNDER THE ACT ARE DIFFERENT FROM THOSE USED FOR OTHER PURPOSES.

UNITS 1 AND 2 MUST BE BUILT.

**BUILDING SECTIONS  
ELIOT IN THE PARK**



**SPALDING  
DeDECKER**  
Engineering and Surveying  
Excellence Since 1954  
905 SOUTH BLVD. EAST  
ROCHESTER HILLS, MI 48307

PROPOSED FEBRUARY 21, 2020      JOB No. SM19-169  
"MUST BE BUILT"                      SHEET 7