

# Russell Woods Park

2023-24 PARK RENOVATIONS

HISTORIC DISTRICT COMMISSION  
MAY 2023



**General Services  
Department**

# TABLE OF CONTENTS

## RUSSELL WOODS HISTORIC DISTRICT COMMISSION SUBMISSION

1. Project Narrative, Background, and Community Engagement
2. Historic Conditions
3. Existing Conditions
4. Proposed Site Plan
5. Material Descriptions
6. Scope of Work, Schedule, and Phasing

# BACKGROUND, NARRATIVE, & ENGAGEMENT

## RUSSELL WOODS - SULLIVAN HISTORIC DISTRICT COMMISSION

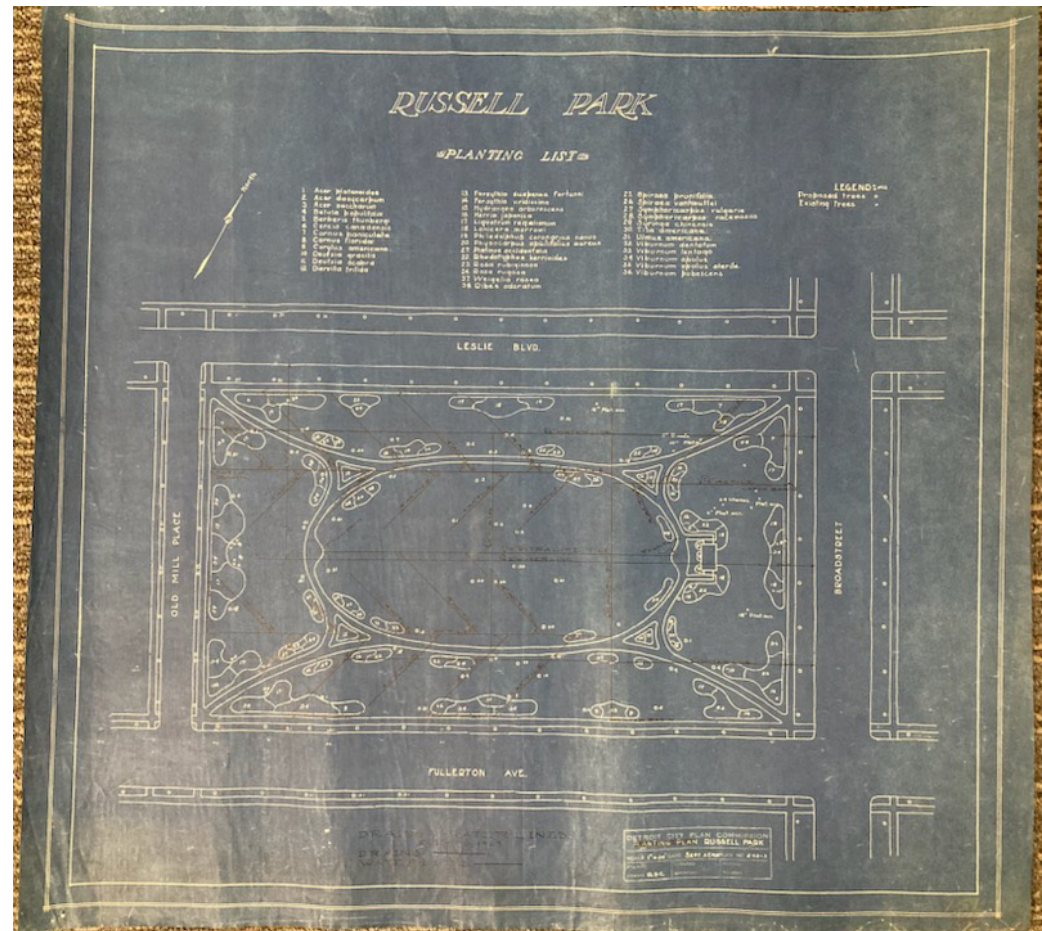
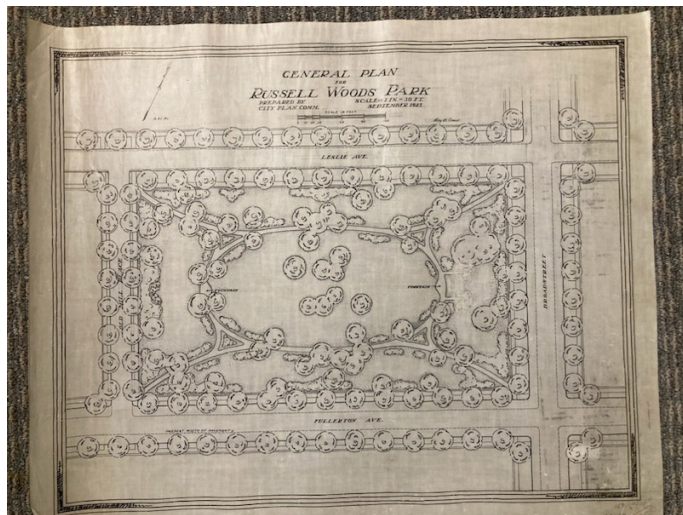
Russell Woods Park has always been an integral part of the Russell Woods - Sullivan historic district. As shown in original landscape plans held by the General Services Department, the park has always featured winding paths and ornamental landscaping with mature trees. At some point in the last 100 years the garden beds were removed, but the path system and trees still define a pleasant refuge for nature in the urban environment.

The General Services Department identified Russell Woods Park for improvement as part of the recently completed Parks Master Plan. Through a series of community engagement sessions, an improvement plan was agreed on by the community. Engagement included in person events, as well as a digital survey sent out to the neighborhood. The survey presented a wide range of park activities that the Department has throughout the city - the results came back in support of keeping the park a passive recreational space, with usability and aesthetic upgrades where possible.

The proposed plan includes looking to the past design of ornamental gardens throughout the park, and reinstating those features. This improvement will preserve the historic passive recreational uses at the park, and further enhance the natural beauty already on site. No new uses will be introduced to the park, as this will be a restoration of what is already on site.

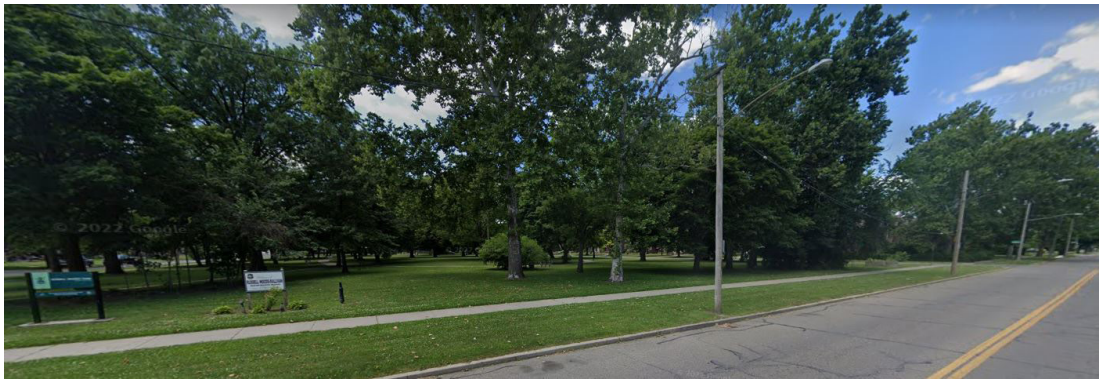
# HISTORIC CONDITIONS

Russell Woods Park has been a fixture of the neighborhood since the 1920's. These original designs show how the layout has been preserved over time, while the landscaping has changed.



# CURRENT CONDITIONS

The site is dominated by a full mature tree cover. Overall the health of the woods is good, with a few exceptions for damaged and diseased trees. Several areas of overgrown brush are on site as well. The path system is in fair to good condition, and only needs minor repairs. Current seating in the park is a mix of several bench styles. The shelter was added to the park recently and is used for events.

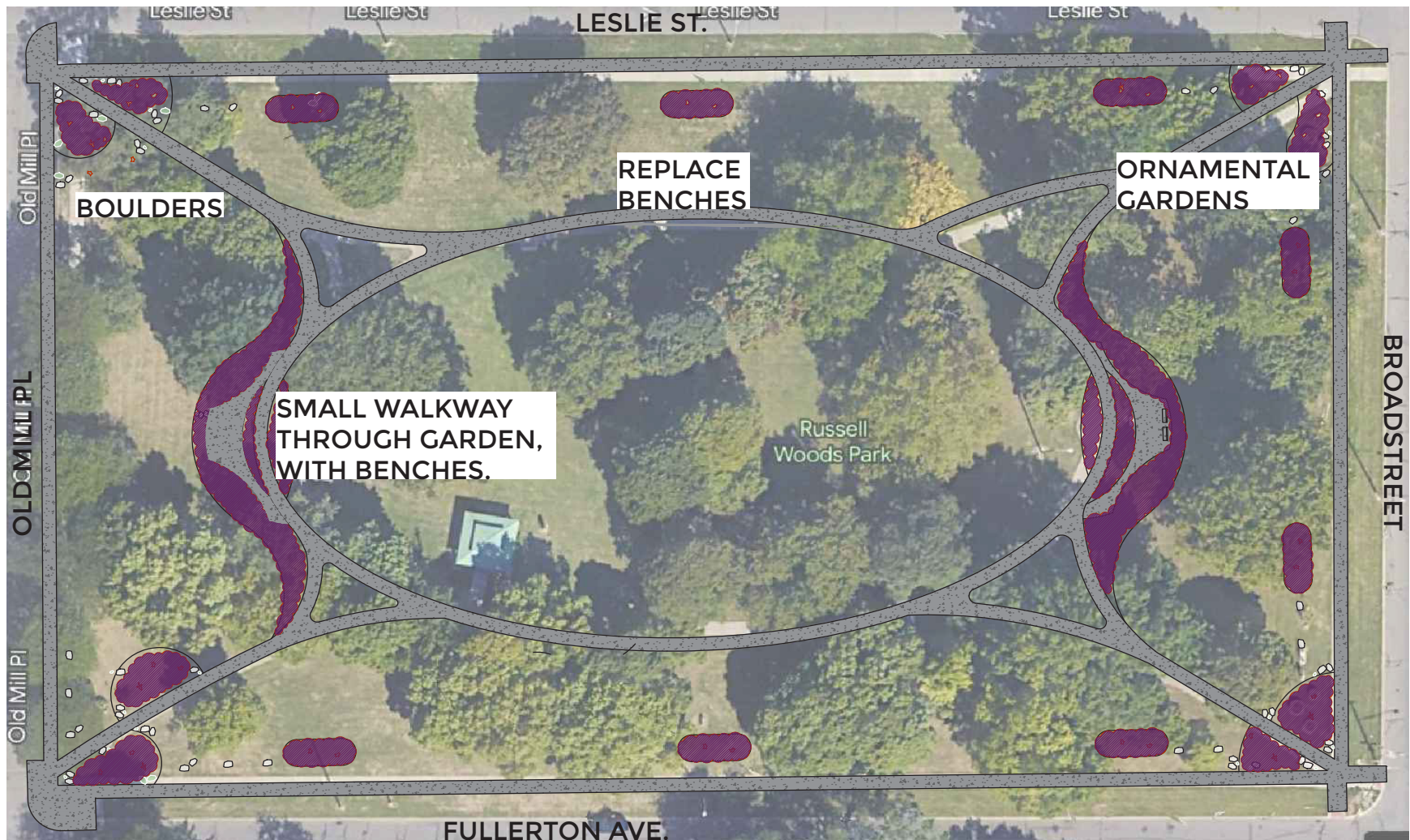


# CURRENT CONDITIONS



Aerial image of the park.

# PROPOSED SITE PLAN



The proposed improvements do not alter the existing layout of the park, and work to improve the passive recreation available at the park. Bed placement is based on the original layout of the landscape beds, with adjustments for modern conditions.

# MATERIALS - PERENNIALS & BRICK PIERS

Ornamental gardens will be installed throughout the park, with a plant list suited to the current conditions of the park. Where possible, plants will be selected from the historic plant lists, but the site is significantly more shady than it was in the 1920's, as the trees the original designers planted have reached maturity. Plants such as Deutzia and Viburnum found on the original plans should work nicely again now. Beds will be defined by the following perennials, and punctuated with annual plantings. Flower colors are meant to pick up and highlight on the earth tones found in the adjacent historic homes, with deep red, orange, yellow, purple, etc.



PERFECT STORM HIBISCUS



DEUTZIA



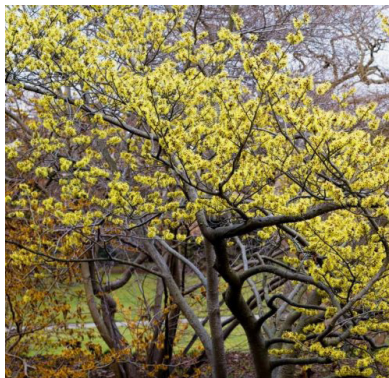
BRUNERRA



RODGERSIA



LIGULARIA



WITCH HAZEL



HOSTA VARIETIES



VIBURNUM



# MATERIALS - BENCHES AND BOULDERS



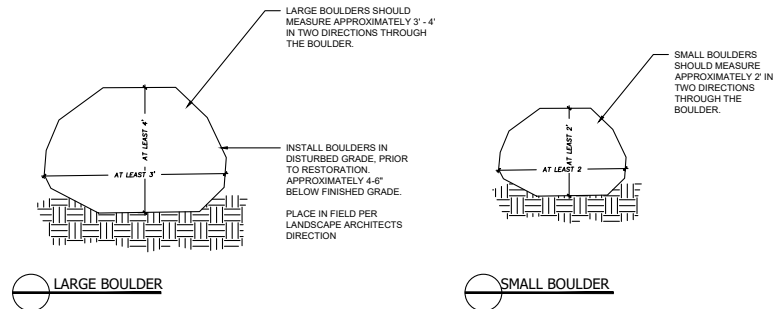
GSD STANDARD - CLASSIC PARK BENCHES. BLACK.

BENCHES WILL REPLACE THE MIS MATCHED BENCHES IN THE PARK CURRENTLY, AND BE ADDED TO THE GARDENS AT THE EAST AND WEST ENDS OF THE PARK.



GRANITE BOULDERS

BOULDERS INSTALLED AT SELECT AREAS NEAR GARDEN BEDS AS ACCENTS. THERE WILL NOT BE BOULDERS ALONG THE ENTIRE LENGTH OF THE PARK. APPROX. 50 BOULDERS IN TOTAL WILL BE USED.



PHOTOS OF THE BOULDERS TO BE SUBMITTED TO LANDSCAPE ARCHITECT PRIOR TO INSTALLATION.  
TYPICAL GRANITE FIELD BOULDERS, PER PICTURE AT RIGHT.

# RUSSELL WOODS PARK - SCOPE OF WORK

## RUSSELL WOODS PARK - ANTICIPATED CONSTRUCTION SCOPE OF WORK

1. Remove select overgrown trees from park. No mature hardwoods to be removed. Mulberry and lilac brush will be removed, as well as pruning of the existing trees, performed by certified arborists.
2. Perform water tap and install irrigation system.
3. Install garden paths. Exposed aggregate concrete with 2 benches at each location.
4. Bed prep - excavation of existing grade and replace with planting mix. Natural edge bed borders.
5. Install plant material. Mulched beds with perennials and annual flowers. Boulder accents at edges.
6. Install 4 replacement benches (current park has several styles of non historic benches).
7. Perform on going plant care and maintenance.

## SCHEDULE:

Assuming an approval from HDC is reached at the June meeting, a construction bid will be released in July. Tree pruning and bed prep to happen over winter, with the full installation being complete by July 2024.

## PHASING AND PRIORITIZATION:

Depending on final contract bids, GSD may or may not be able to install the full proposal of flower beds as shown on the site plan. Beds will be prioritized in this order:

1. Beds at the 4 corners of the park.
2. Beds at the east and west ends of the oval walking loop
3. Beds along Fullerton and Leslie .