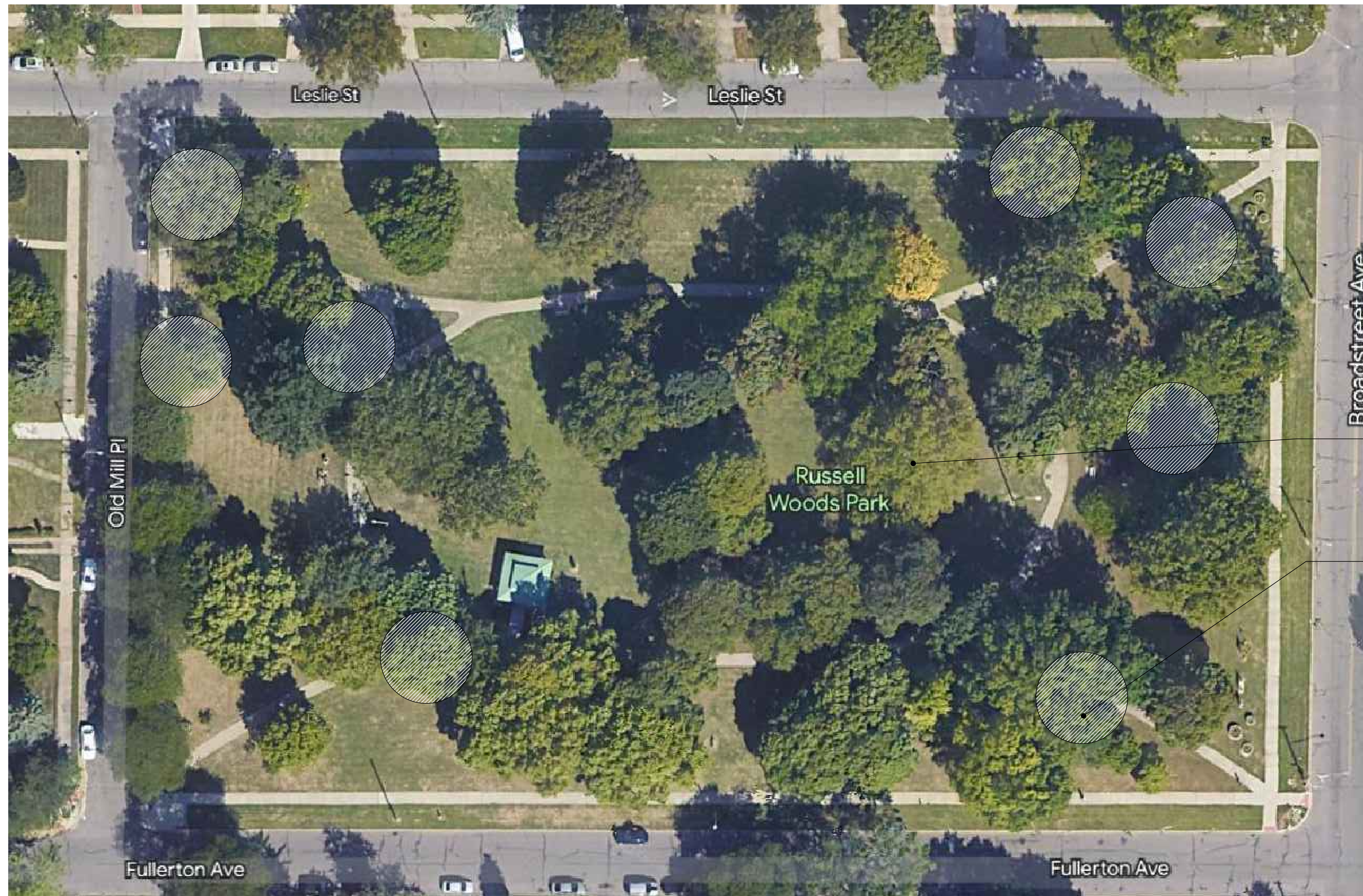




GENERAL SERVICES DEPARTMENT
LANDSCAPE DESIGN UNIT
 115 ERSKINE ST, DETROIT MI 48201
 PH: (313) 628-0900 FAX: (313) 628-0927



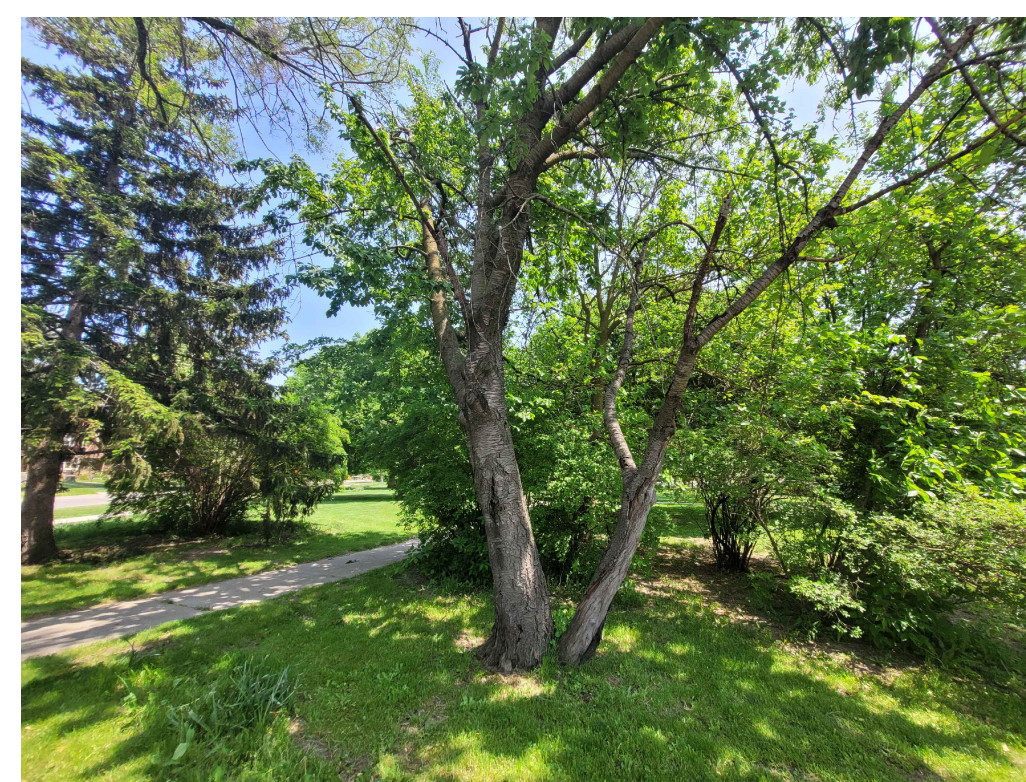
TREE PRUNING

ALL AREAS OF BRUSH AND DEAD TREES TO BE REMOVED.

DEMOLITION NOTES:

QUANTITIES			
DESCRIPTION	TOTAL	UNIT	NOTES
BRUSH/TREE REMOVALS			CONTRACTOR TO REMOVE AREAS OF BRUSH AND DEAD TREES. TO INCLUDE REMOVAL OF ALL STUMPS AND RESTORATION OF TURF.
TREE PRUNING			PROVIDE TREE PRUNING SERVICES THROUGHOUT ENTIRE PARK. PERFORMED BY CERTIFIED ARBORISTS. PRUNING TO BE DONE OVER WINTER.

NOTE: BID ITEM IS LISTED AS "DEMOLITION" AND INCLUDES ALL ITEMS LISTED ON THIS PAGE, AND ANY OTHER SURFACE OBSTRUCTION IN NEED OF DEMOLITION FOR THE COMPLETION OF THE PROJECT. CONTRACTOR SHOULD ASSESS THE SITE AND DETERMINE THE EXTENT OF DEMOLITION NEEDED TO COMPLETE THE PLANS SHOWN IN THIS DOCUMENT. FURTHER NEGOTIATIONS WILL BE HAD IN THE CASE OF UNKNOWN UNDERGROUND OBSTRUCTIONS.



EXAMPLES OF BRUSH IN RUSSELL WOODS PARK. CONTRACTOR WILL BE RESPONSIBLE FOR REMOVING ALL BRUSH, DEAD TREES, OVERGROWN AREAS, ETC. THROUGHOUT THE PARK.

PROJECT NAME:

RUSSELL WOODS PARK

DRAWN: JD	APPROVED:
CHECKED:	DATE
ISSUED FOR REVIEW	5/23/2023

SHEET TITLE:

DEMOLITION

FOR FILE
 PROJ #:
 PROP #:
 DIST #: 7

SHEET
2