

April 27, 2023

**VIA EMAIL**

Daniel Rieden, PLA/ASLA  
Lead Landscape Architect  
Historic Preservation Planning &  
Development Department  
2 Woodward Avenue, Suite 808,  
Detroit, MI 48226  
[riedenda@detroitmi.gov](mailto:riedenda@detroitmi.gov)

Re: 4325 Fullerton Items

Dear Mr. Rieden

This letter serves as a response to your inquiries, which were sent to me on April 21, 2023. Please see below responses to each question and consider this a supplement to the application.

**1. You stated that no doors were replaced. Can you confirm that these are the original doors?**

The below photo shows that the all-wood constructed exterior doors are extremely old. The front door is fitted with an antique handle because modern systems are incompatible. That said, I cannot confirm this door was originally installed in 1924. That said, based on appearance and construction I am confident this is the original door.



- 2. Please send us exterior photos of each side of the house. Please label the photos showing where any (doors or) windows were replaced. Using the photos, please list the product, dimensions, operation (Single or double hung, etc), material for each window. You can use a table with a key and use the same key to make a note on the photos. The Commission needs to understand how many windows and where they are located.**

**WINDOWS:** Enclosed is a list of the window dimensions provided by Mulligan Windows. Also enclosed are photos of each side of the home. On the photos, I have labeled what side is pictured and which windows on that side were replaced. Though the documents do note the dimensions, operation, and material, I am also including the product list provided by the window installer for ease of reference.

**DOORS:** No doors were replaced.

- 3. Please provide the cutsheets/product sheets for the windows (and doors, if any), the shingles on the dormers, and the rear porch/deck railings that were replaced. These product sheets should show the dimensions and a cross section for the windows with their materiality, etc. They are often available online. Please do not send us weblinks, please do screenshots or send us PDF or JPG image of the products. Please also send us the paint product, color and sheen from their website.**

**Windows:** I have enclosed the information provided to me by Mulligan Windows as mentioned above identifying dimensions. I also enclosed the window product sheets available online.

**Doors:** No doors were replaced.

**Shingles:** I have requested this information from the Company that installed the shingles and will provide it to you as soon as I receive it. .

**Railings:** The railings are original. I only replaced a few spindles that were identical to the prior model.

**Paint:** The Paint is Sherwin Williams SuperPaint Exterior Acrylic Latex. The color is 6258 Tricorn Black.

Daniel Rieden, PLA/ASLA  
April 27, 2023  
Page 3

**4. Do you have the original windows in storage?**

Unfortunately, No. As noted in the terms of the contract (see attached “Fullerton Window Contract”), Mulligan Windows represented they would obtain all necessary permits. Mulligan Windows confirmed that they disposed of the removed/destroyed windows.

**5. Your application mentions that the wood windows that were replaced had been looked at by a professional. Do you have any documentation of this? Can you provide their name/Company?**

Multiple individuals and companies inspected the windows before Mulligan Windows and confirmed that they were beyond repair. I am working to obtain information from these vendors. That said, these companies were:

- a. Majic Windows
- b. Wallside Windows
- c. Iovan Door and Glass

**6. Is there any other exterior work on the house or the landscape that you wish to include in this application? If so, we would need documentation for those items too.**

No other work was performed.

**7. On April 27, 2023, you asked about the removal of the front yard light.**

When I purchased the home, there was no front yard light.

Should you need further clarification, please reach out to me. I can be reached by phone at (248) 921-3631 or by email at [lee@callteamlee.com](mailto:lee@callteamlee.com).

Sincerely,

Red Hannah LLC

/s/Lee Ehlers  
Lee Ehlers



### **FULLERTON - FRONT**

**Third Floor:** Both windows replaced. W: 28.5 x 53.5 Vinyl - Double Hung  
**Second Floor:** Right most windows (2) W: 32.5 x 58 Vinyl - Double Hung  
Left of dormer window (1) W: 20.5 x 38 Vinyl - Double Hung



### **FULLERTON - LEFT SIDE**

**Third Floor:** Attic space (1) W:28.5 x 53.5 Vinyl - Double Hung  
**Second Floor:** Stairs (1) W:30 x 46 Vinyl - Double Hung. (2) W:21.5 x 58 Vinyl - Double Hung



**FULLERTON - RIGHT SIDE**

**Third Floor:** None

**Second Floor:** (2) W 32.5x 58 Vinyl - Double Hung. (2) W: 30 x 46



**FULLERTON - BACK**

**Third Floor:** (2) W: 28.5 x 53.5 Vinyl - Double Hung

**Second Floor:** (1) W: 20.5 x 38 Vinyl - Double Hing.

# Mulligan Construction & Window

Job Name: Lee Ehlers City: Detroit Zip: 48238

Rental Home

Address: 4325 Fullerton Home #: \_\_\_\_\_

Alt #: Lee cell 248-921-3631 Job #: \_\_\_\_\_

House Type: \_\_\_\_\_ Window Type: Polaris Thermal weld Plus  
**Window Schedule**

Room	Style	Width	Height	Notes
Second level Bath Closet	DH	20 $\frac{1}{4}$	38	✓
Second level right side of House right Bed	DH	32 $\frac{1}{4}$	58	✓
Second level Right side of House Left Bed	DH	32 $\frac{1}{4}$	58	✓
right side Second level Stairs Left	DH	30	46	Temp glass ✓ Square up opening Fill in Top
right side Second level Stairs Right	DH	30	46	Temp glass Square up opening Fill in Top
right side Second level Front Bed Left	DH	32 $\frac{1}{4}$	58	✓
right side Second level Front Bed right	DH	32 $\frac{1}{4}$	58	✓
Third level Front right	DH	28 $\frac{1}{2}$	53 $\frac{1}{2}$	✓
Third level Front Left	DH	28 $\frac{1}{2}$	53 $\frac{1}{2}$	✓
Third level Back Right	DH	27 $\frac{1}{2}$	53 $\frac{1}{2}$	✓

32700 W. 8 Mile Road  
Farmington, MI 48336  
Fax (248) 477-9368  
mulliganwindow.com



WINDOWS, SIDING & ROOFING

1-888-425-0071

Carve in to Measure 5/11/22

Your Single Source  
For All Your Home  
Improvement Needs

Ref Matt Quinn  
Ed's P.C.

**CONTRACT AND AGREEMENT**

Name: Lee Ehlers Date: 5/11/2022  
Address: 4325 Fullerton City: Detroit Zip: 48238  
E-mail: \_\_\_\_\_ Home Phone: \_\_\_\_\_  
Cell Phone: 248-921-3631 Work Phone: \_\_\_\_\_

**SPECIFICATIONS** Date House Built: \_\_\_\_\_

Twenty Three Total windows, Polaris Thermal weld Plus series windows  
All Twenty Three windows to be double hungs, Seventeen windows to be  
installed in second level of house + Six windows to be installed Third  
Floor of house. Four double hung windows in stairwells to have Tempered  
glass. Two bathrooms to have Full obs glass. All windows to be white exterior  
with white interior with double cam locks (white), Invergy reinforcement,  
all windows to have stainless steel intercept spacer system with Low E + Argon  
gas filled. Half screens on all windows, \* Special note; Two windows  
Driveway side of house second level stairway landing to be squared-up  
to be double hungs. Fill in above both windows, with 2"x4", Insulation, plywood  
exterior + Drywall interior + new pine casing + exterior Aluminium Trim (Black)

- 11 @ 34x60 DH Second Floor bedrooms
- 4 @ 32x54 DH 2 Front + 2 back Third Floor
- 2 @ 32x45 DH Full obs second Floor bath
- 1 @ 22x38 DH second Floor rear closet 1 @ 32x45 DH Front bed second Floor
- 4 @ 34x45 DH All Tempered stair second + Third Floor (Special note above)

Insulate around all new windows, Trim exterior Aluminium + between double windows (Black)  
OSI quad caulking on all new windows / clean up + haul away all + new window debris

Work not to be done: Any First Floor windows

Lifetime window with Mulligan Lifetime workmanship warranty

\* If permit is needed Mulligan will pull it, customer will pay for it \*  
In consideration of the said work and services to be done by the contractor, the sum of 27,555.00

Twenty Seven Thousand Five Hundred Fifty Five <sup>00</sup>/<sub>100</sub> as follows:

50% 10,000.00 as a deposit: \$ 17,555.00 promptly upon completion of said work and/or to execute a  
promissory note for: \_\_\_\_\_ plus interest payable in \_\_\_\_\_ equal monthly installments at \_\_\_\_\_  
per month.

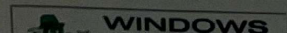
**BUYERS RIGHT TO CANCEL** - IF THIS AGREEMENT WAS SOLICITED AT YOUR RESIDENCE AND YOU DO NOT WANT THE GOODS OR SERVICES, YOU MAY CANCEL THIS AGREEMENT BY MAILING A NOTICE TO THE SELLER. THE NOTICE MUST SAY THAT YOU DO NOT WANT THE GOODS OR SERVICES AND MUST BE MAILED BEFORE MIDNIGHT ON THE THIRD BUSINESS DAY AFTER YOU SIGN THIS AGREEMENT. THE NOTICE MUST BE MAILED TO: MULLIGAN CONSTRUCTION & WINDOW REPLACEMENT CO., 32700 8 MILE ROAD, FARMINGTON, MI 48336.

Please make check payable to: Mulligan Construction

OK to use job sign



Signed: [Signature] Date: 5/11/22  
Owner





## **7000 Series - Replacement/Retrofit DH-SL-PW-Case Window - Interior Pocket Installation**

Not all window types can be installed into every wall application in all areas. Consult with your local building code official for applicable building codes and regulations. Local building code requirements supersede recommended installation instructions.

Note: Installations where the sill is higher than 35 feet above ground level, must be designed by an architect or structural engineer. Failure to install windows into square, level and plumb openings could result in denial of warranty claims for operational or performance problems.

### **TOOLS**

- Installation Screws (Included)
- Tape Measure
- Level
- Screwdriver
- Caulk & Caulking Gun
- Hammer
- Flat Pry Bar
- Utility Knife

### **SAFETY**

- Do not work alone. Two or more people may be required.
- Use safe lifting techniques.
- Use caution when handling glass. Broken or cracked glass can cause serious injury.
- Use proper protective gear (gloves, safety glasses, ear protection, etc.)
- Use power tools safely following manufacturer operating instructions.
- Use caution when working on ladders or at elevated heights.
- Take proper precaution if lead paint is suspected (commonly used prior to 1979). Information regarding regulations and lead protection can be found at [www.epa.gov/lead](http://www.epa.gov/lead)

### **Material & Handling**

- Handle in a vertical position. Do not carry flat or drag on the floor.
- Do not put stress on joints, corners or frames
- Store window in dry, well-ventilated area in vertical, leaning position. Do not stack horizontally.
- Protect from exposure to direct sunlight during storage.

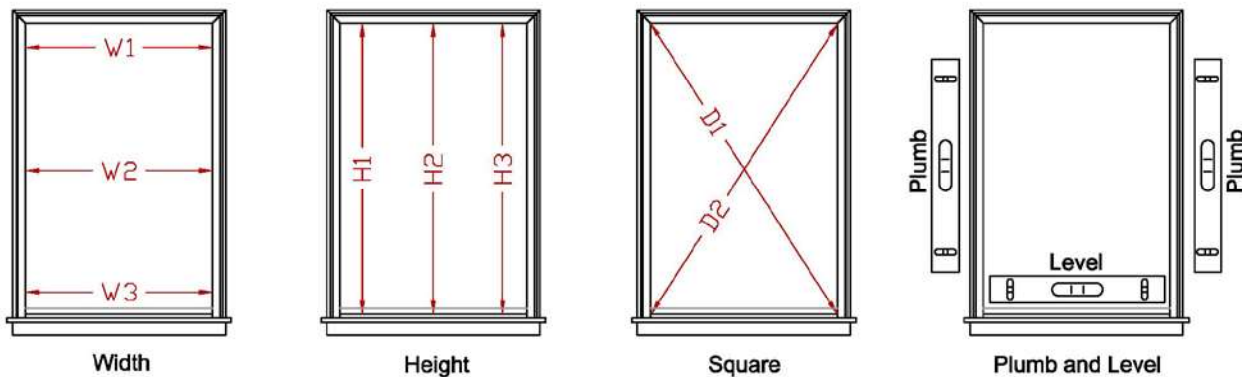
### **DISPOSAL & RECYCLING**

Most Construction & Demolition (C&D) debris is nonhazardous and is not regulated by EPA. Many states have specific definitions of C&D debris that effectively determine what materials are allowed to be disposed of in nonhazardous waste landfills & C&D landfills. Even if federal or state regulations do not apply to your business, you should make efforts to keep the hazardous components of the wastes you generate out of landfills to conserve natural resources and protect human health and the environment. Suggestions outlined at the following link <http://www.epa.gov/osw/inforesources/pubs/infocus/rif-cd.pdf> identify steps you can take to reduce, reuse, and recycle your waste.



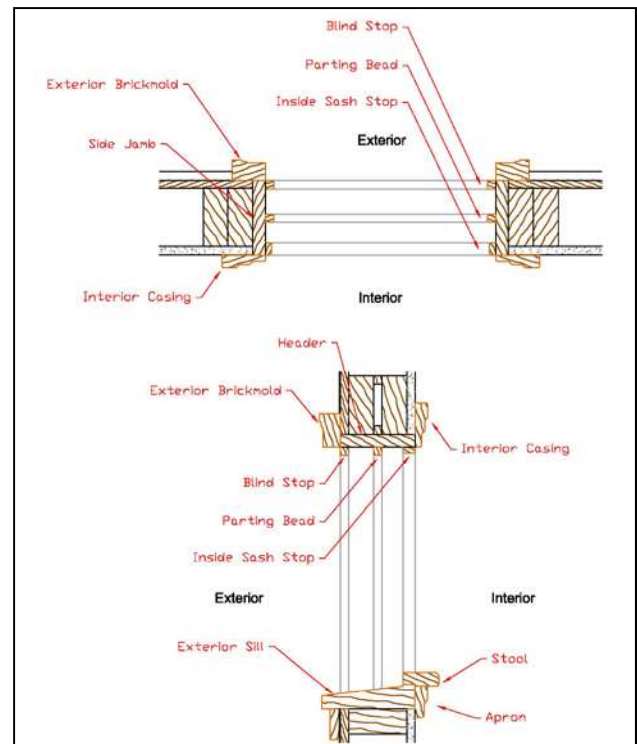
**Read these instructions completely before installing your new window, they are meant to be a general outline and do not cover every construction application.**

1. Before removing the old unit, inspect the new window for damage and make sure you have all of its parts. Also check the size of the window and make sure it is made to spec. Measure the size of the opening width at the top middle and bottom and the size of the height at left, center and right to ensure that the window will fit within the smallest of the measurements. Measure the opening diagonally to make sure the window can be installed square and plumb within the opening. (See the included Replacement Window Measurement Instructions sheet for more detail)



If there is an issue with any of the above, **DO NOT INSTALL** the window and contact your window and door distributor.

2. Remove the inside sash stops and the inside sash from the existing window. (Take care not to damage the stop if it is to be reinstalled). Remove the parting bead and the outside sash, leaving the blind stop for the new window installation. Make sure that the perimeter of the opening is clean of debris and that all pulleys and any hardware from the old window are removed and all of the voids are sealed. Also make sure the sill is level.
3. Wrap the entire perimeter of the window with insulation before putting it into the opening. If using polyfoam, make sure the Double Hung frame is shimmed up at the jambs on the sill to relieve the pressure between the foam and the sill to prevent the sill from crowning. (A Slider frame sill must be level and supported the whole length)





4. Place the window into the opening on top of the shims and put a level on the sill to make sure the sill is level and not crowned.
5. Once the sill is level, loosely install all of the installation screws. Check the frame for square by measuring diagonally from corner to corner. On a double hung, adjust the alignment screws until the jambs are plumb from top to bottom. On a slider, use shims to plumb the jambs. Now finish screwing in the installation screws taking care not to distort the frame. (On a slider or wide double hung, shim the head of the frame if necessary so that it is level and install an installation screw. Wider windows might require more than one screw).
6. Recheck the frame for square and plumb and make sure the sashes operate and lock properly. (Slider sashes should lift out easily). Also make sure all weatherstripping is making contact and the reveals between the sash and frame are even.
7. On the outside, cut the sill trim to fit between the blind stops and tap it into the accessory groove. (If a slider is being installed on a sloped sill, shim the outside of the frame to support the weight of the sash, and then install the sill trim).
8. Caulk around the perimeter of the frame on the outside with an approved sealant. Where needed, trim and cap. Do not cover the weep holes on a slider or fixed window.
9. Finally, finish off the inside of the window.



*The* **THERMALWELD<sup>®</sup>** *Collection*  
**PLUS**  
VINYL WINDOWS



# ENERGY EFFICIENCY

## *Ease of Operation + Ownership*

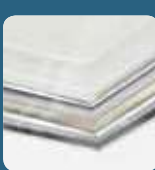
### Welded Frame & Sash Corners



Fusion welded frame and sash corners are strong and free from gaps.

### Integrated Extruded Pull Rails are part of sash extrusions, not added later.

### Heavy Duty Cam-Style Locks & Keepers secure and air-tight seal



Satin nickel, brass and aged bronze finishes available\*

energySMART<sup>®</sup> Insulated Glass

Standard Patented Roller Tilt<sup>®</sup> 3/4" Constant Force Balance System: Springs travel with the sash. This allows the to operate with significantly less friction and noise.

### Sash Limit Locks limit sash travel secure partial opening



*double hung*



*glider*

Continuous Over / Under Interlock & Weather-Stripping prevent air infiltration across entire meeting rail



Innergy™ at meeting rails\*



True sloped sill for positive water drain off, no weep holes to clog

\*options



### Double Hung

Shown here in Bronze Exterior Laminate (full screen required on painted and laminate windows).

### Benefits of Our Window

Our extrusions are fusion welded at every corner to create seamless and strong windows.



Windows that qualify as Most Efficient are windows with the Ultimate<sup>®</sup> and Ultimate Plus<sup>®</sup> glass packages. Ask your sales rep for more information.

### Maintenance Free

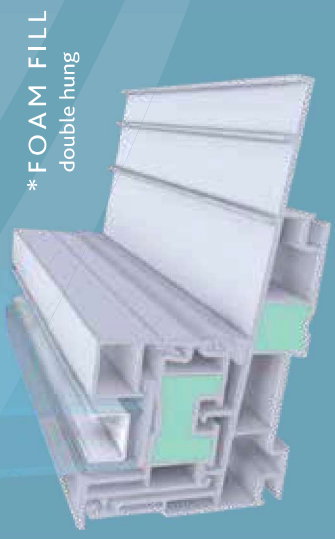
The vinyl formulation maintains its color and smooth surface.

### Multi-Chamber Extrusions

Interior walls add strength. These walls and air chambers between further improve insulating properties.

### Casement

Sash cranks fold into base for a clean look. Sash opens fully with just a few turns. These windows are triple sealed against the weather and can be safely cleaned inside the home. Hinged side of sash slides away from frame when fully opened.



\* FOAM FILL double hung

# INNERGY®

## Rigid Thermal Reinforcements



- **\* Innergy®**
- Innergy is the innovative, energy-efficient alternative to aluminum.
- Rigid Thermal Reinforcements are advanced fiberglass reinforced resin inserts, designed to slide easily into window chambers for greater support and insulation.
- Better Thermal Performance  
Up to 700 times better than aluminum in material-to-material comparisons.
- Better Thermal Break  
Impervious to cold or heat.
- Better protection against condensation  
Helps prevent staining that can occur with metal reinforcements.
- Better flexibility  
Will not permanently set when impacted.

The name and logo of Decemnick, N.V. of its affiliated companies and the products and services manufactured by them, are trademarks protected by national and international laws. Innergy is a registered trademark of Decemnick, North America. The color GREEN is a trademark of Decemnick, North America, LLC.

## Screen Options

- Strong, extruded aluminum frame in white or tan
- Half screen Standard • Aluminum Screen Mesh\*
- Available in Pet Screen\* and Full Screen\*

### \* BetterVUE®



#### BetterVUE® Screen Mesh

- Better Insect Screen
- 10% Better Insect Protection
- 20% Better Airflow
- 20% Clearer View

### Standard



#### Standard Screen Mesh

- Sight more obstructed
- Less Airflow than BetterVue Screens
- Proven and Reliable



Flex Screen® CLEAN  
Full Screen ONLY Comes standard on all exterior painted Double Hungs, Gliders and Hopper.  
Two half screens on 3 lite Glider.



### Gliders • 2+3 Lite

Sash lift out from inside for easy cleaning.  
2 lite - half screen  
3 lite - active panel screen[s]



### Awning

Enjoy fresh air even on rainy days.

\*options

**DECORATIVE GLASS\***  
Designs

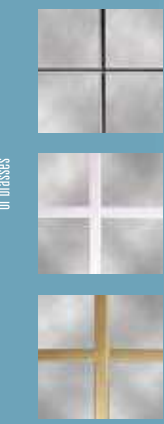


colonial  
prairie style  
double prairie style  
diamond n/a contour or brasses

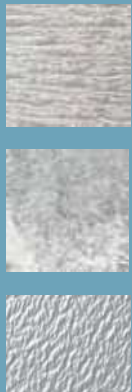
**PLATED LOCK FINISHES\***



antique brass  
satin nickel  
bright brass  
aged bronze



view glass 3/8" v-groove, interior surface of glass unit pane



obscure  
glue chip  
rain glass

**COLORS\***  
Vinyl



white  
tan

**Interior Woodgrain Laminate**



medium oak  
cherry  
vintage pecan  
coppertone hardware standard on woodgrains

Please refer to actual color samples for true product representation.

**MINIBLINDS\***



white  
alabaster  
tan  
silver  
gold

**Exterior Paint\*** 20 Year Warranty Against fading, peeling or blistering



Lead time 4-6 weeks -#Muntin color may be affected by glass coatings, such as Low-E. Coil not exact match \*Options Colors shown are reproduced by mechanical process and may vary from actual colors of product. Use actual color-selector.

**Exterior Laminate\*** 20 Year Warranty Against fading, peeling or blistering



wicker  
choco brown  
bronze  
coal black

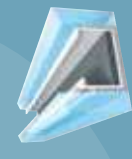
**RESEARCH & DEVELOPMENT**

Polaris products are scrutinized under extreme weather and structural stresses at the Polaris in-factory testing facility. Our R&D Department ensures that our products feature the latest industry innovations. Top quality and integrity are guaranteed.

**MORE GLASS OPTIONS** Krypton fill, Bronze or Gray tint

**ENERGY EFFICIENT GLASS**

energySMART® glass is standard in every Polaris® window. These insulated glass (IG) units are panes of glass sealed onto the Intercept® U-shaped steel spacer. Together, the spacer and sealant block temperature transfer and reduce condensation. We also offer many high-performance energySMART upgrades. Low-E coating reduces ultra violet light damage and heat gain. Triple pane IG units have sound deadening properties. Argon or krypton gas fill between panes further reduces temperature transfer. Ask about ENERGY STAR qualified upgrades.



intercept  
SPACER SYSTEM



NAMI  
Certified



Made in the USA

Ask About Our Glass Breakage Warranty

©ThermalWeld Plus® and energySMART® are registered trademarks of Polaris® Windows & Doors OH, USA 2020. All other trademarks are property of their respective owners. Stock Photography is used in this brochure. These photographs are not exact replicas of Polaris® Windows & Doors products.

\*options

LT192 2022\_01 3M

# SuperPaint®

## Exterior Latex Satin

A89-Series



# SHERWIN WILLIAMS®

### CHARACTERISTICS

**SuperPaint Exterior Latex**, with resistance to early dirt pick up, provides outstanding performance on properly prepared aluminum and vinyl siding, wood, hardboard, masonry, cement, brick, block, stucco, and metal down to a surface and air temperature of 35°F.

**VinylSafe™** paint colors allow you the freedom to choose from 100 color options, including a limited selection of darker colors formulated to resist warping or buckling when applied to a sound, stable vinyl substrate.

**Color:** Most Colors

**Coverage:** 350-400 sq. ft. per gallon  
@ 4 mils wet; 1.5 mils dry

#### **Drying Time, @ 50% RH:**

	@ 35-45°F	@ 45°F +
Touch:	2 hours	2 hours
Recoat:	24-48 hours	4 hours

Drying and recoat times are temperature, humidity, and film thickness dependent

**Finish:** 10-20 units @ 60°

#### **Tinting with CCE only:**

<b>Base:</b>	<b>oz per gallon</b>	<b>Strength:</b>
Extra White	0-6	SherColor
Deep Base	4-12	SherColor
Ultradeep Base	10-12	SherColor
Light Yellow	2-12	SherColor

**Extra White A89W02151**  
(may vary by color)

#### **VOC (less exempt solvents):**

less than 50 grams per litre; 0.42 lbs. per gallon

As per 40 CFR 59.406

**Volume Solids:** 37 ± 2%

**Weight Solids:** 48 ± 2%

**Weight per Gallon:** 10.06 lbs

**Flash Point:** N/A

**Vehicle Type:** 100% Acrylic

**Shelf Life:** 36 months unopened

**WVP Perms (US)** 19.76 grains/(hr ft<sup>2</sup> in Hg)

#### **Mildew Resistant**

This coating contains agents which inhibit the growth of mildew on the surface of this coating film.

### COMPLIANCE

As of 08/31/2020, Complies with:

<b>OTC</b>	Yes
<b>OTC Phase II</b>	Yes
<b>SCAQMD</b>	Yes
<b>CARB</b>	Yes
<b>CARB SCM 2007</b>	Yes
<b>Canada</b>	Yes
<b>LEED® v4 &amp; v4.1 Emissions</b>	N.A.
<b>LEED® v4 &amp; v4.1 VOC</b>	Yes
<b>EPD-NSF® Certified</b>	N.A.
<b>MIR-Manufacturer Inventory</b>	N.A.
<b>MPI®</b>	Yes

### APPLICATION

When the air temperature is at 35°F, substrates may be colder; prior to painting, check to be sure the air, surface, and material temperature are above 35°F and at least 5°F above the dew point. Avoid using if rain or snow is expected within 2-3 hours.

Do not apply at air or surface temperatures below 35°F or when air or surface temperatures may drop below 35°F within 48 hours.

No reduction necessary.

#### **Brush:**

Use a nylon-polyester brush.

#### **Roller:**

Use a high quality 3/8-3/4 inch nap synthetic roller cover.

For specific brushes and rollers, please refer to our Brush and Roller Guide on [sherwin-williams.com](http://sherwin-williams.com)

#### **Spray—Airless**

Pressure 2000 p.s.i.

Tip .015-.019 inch

### APPLICATION TIPS

Make sure product is completely agitated (mechanically or manually) before use.

Thoroughly follow the recommended surface preparations. Most coating failures are due to inadequate surface preparation or application. Thorough surface preparation will help provide long term protection.

### SPECIFICATIONS

**SuperPaint Exterior Latex** can be self-priming when used directly over existing coatings, or bare drywall, plaster and masonry (with a cured pH of less than 9). The first coat acts like a coat of primer and the second coat provides the final appearance and performance. Please note that some specific surfaces require specialized treatment.

Use on these properly prepared surfaces:

#### **Aluminum & Aluminum Siding<sup>1</sup>,**

#### **Galvanized Steel<sup>1</sup>**

2 coats SuperPaint Exterior Latex

#### **Concrete Block, CMU, Split face Block**

1 coat Loxon Acrylic Block Surfacers

2 coats SuperPaint Exterior Latex

#### **Brick, Stucco, Cement, Concrete**

1 coat Loxon Concrete and Masonry Primer<sup>3</sup>

or Loxon Conditioner<sup>2</sup>

2 coats SuperPaint Exterior Latex

#### **Cement Composition Siding/Panels**

1 coat Loxon Concrete and Masonry Primer<sup>3</sup>

or Loxon Conditioner<sup>2</sup>

2 coats SuperPaint Exterior Latex

2 coats SuperPaint Exterior Latex

2 coats SuperPaint Exterior Latex

#### **Plywood**

1 coat Exterior Latex Primer

2 coats SuperPaint Exterior Latex

#### **\*Vinyl Siding**

2 coats SuperPaint Exterior Latex

#### **Wood (Cedar, Redwood)<sup>4</sup>**

1 coat Exterior Oil-Based Wood Primer<sup>2</sup>

2 coats SuperPaint Exterior Latex

<sup>1</sup> On large expanses of metal siding, the air, surface, and material temperatures must be 50°F or higher.

<sup>2</sup> Not for use at temperatures under 50°F. See specific primer label for that product's application conditions.

<sup>3</sup> Not for use at temperatures under 40°F. See specific primer label for that product's application conditions.

<sup>4</sup> Knots and some woods, such as redwood and cedar, contain a high amount of tannin, a colored wood extract. For best results on these woods, use a coat of Exterior Oil-Based Wood Primer.

Other primers may be appropriate. Standard latex primers cannot be used below 50°F. See specific primer label for that product's application conditions.

When repainting involves a drastic color change, a coat of primer will improve the hiding performance of the topcoat color.

# SuperPaint®

## Exterior Latex Satin

### SURFACE PREPARATION

**WARNING!** Removal of old paint by sanding, scraping or other means may generate dust or fumes that contain lead. Exposure to lead dust or fumes may cause brain damage or other adverse health effects, especially in children or pregnant women. Controlling exposure to lead or other hazardous substances requires the use of proper protective equipment, such as a properly fitted respirator (NIOSH approved) and proper containment and cleanup. For more information, call the National Lead Information Center at **1-800-424-LEAD** (in US) or contact your local health authority.

Remove all surface contamination by washing with an appropriate cleaner, rinse thoroughly and allow to dry. Existing peeled or checked paint should be scraped and sanded to a sound surface. Glossy surfaces should be sanded dull. Stains from water, smoke, ink, pencil, grease, etc. should be sealed with the appropriate primer-sealer. Recognize that any surface preparation short of total removal of the old coating may compromise the service length of the system.

#### **Aluminum and Galvanized Steel:**

Wash to remove any oil, grease, or other surface contamination. All corrosion must be removed with sandpaper, wire brush, or other abrading method.

#### **Cement Composition Siding-Panels:**

Remove all dirt, dust, grease, oil, loose particles, laitance, foreign material, and peeling or defective coatings. Allow the surface to dry thoroughly. If the surface is new, test it for pH, if the pH is higher than 9, prime with Loxon Concrete & Masonry Primer.

#### **Caulking:**

Gaps between windows, doors, trim, and other through-wall openings can be filled with the appropriate caulk after priming the surface.

#### **Masonry, Concrete, Cement, Block:**

All new surfaces must be cured according to the supplier's recommendations—usually about 30 days. Remove all form release and curing agents. Rough surfaces should be filled to provide a smooth surface. If painting cannot wait 30 days, allow the surface to cure 7 days and prime the surface with Loxon Concrete & Masonry Primer/Sealer. Cracks, voids, and other holes should be repaired with an elastomeric patch or sealant. Concrete masonry units (CMU) - Surface should be thoroughly clean and dry. Air, material and surface temperatures must be at least 50°F (10°C) before filling. Use Loxon Acrylic Block Surfacer. The filler must be thoroughly dry before topcoating.

#### **Previously Painted Surfaces:**

If in sound condition, clean the surface of all foreign material. Smooth, hard or glossy coatings and surfaces should be dulled by abrading the surface. Apply a test area, allowing paint to dry one week before testing adhesion. If adhesion is poor, additional abrasion of the surface and/or removal of the previous coating may be necessary. Retest surface for adhesion. If paint is peeling or badly weathered, clean surface to sound substrate and treat as a new surface as above. Recognize that any surface preparation short of total removal of the old coating may compromise the service length of the system.

### SURFACE PREPARATION

#### **Mildew:**

Prior to attempting to remove mildew, it is always recommended to test any cleaner on a small, inconspicuous area prior to use. Bleach and bleaching type cleaners may damage or discolor existing paint films. Bleach alternative cleaning solutions may be advised.

Mildew may be removed before painting by washing with a solution of 1 part liquid bleach and 3 parts water. Apply the solution and scrub the mildewed area. Allow the solution to remain on the surface for 10 minutes. Rinse thoroughly with water and allow the surface to dry before painting. Wear protective eyewear, waterproof gloves, and protective clothing. Quickly wash off any of the mixture that comes in contact with your skin. Do not add detergents or ammonia to the bleach-water solution.

#### **Wood, Plywood, Composition Board:**

Clean the surface thoroughly then sand any exposed wood to a fresh surface. Patch all holes and imperfections with a wood filler or putty and sand smooth. All new and patched areas must be primed. Knots and some woods, such as redwood and cedar, contain a high amount of tannin, a colored wood extract. If applied to these bare woods, it may show some staining. If staining persists, spot prime severe areas with 1 coat of Exterior Oil-Based Wood Primer prior to using.

#### **Steel:**

Rust and mill scale must be removed using sandpaper, wire brush, or other abrading method. Bare steel must be primed the same day as cleaned.

#### **Stucco:**

Remove any loose stucco, efflorescence, or laitance. Allow new stucco to cure at least 30 days before painting. If painting cannot wait 30 days, allow the surface to dry 7 days and prime with Loxon Concrete & Masonry Primer. Repair cracks, voids, and other holes with an elastomeric patch or sealant.

#### **\*Vinyl or other PVC Building Products:**

Clean the surface thoroughly by scrubbing with warm, soapy water. Rinse thoroughly, if needed prime with appropriate white primer. Do not paint vinyl with any color darker than the original color or having a Light Reflective Value (LRV) of less than 56 unless VinylSafe® Colors are used. If VinylSafe colors are not used the vinyl may warp. Follow all painting guidelines of the vinyl manufacturer when painting. Only paint properly installed vinyl siding. Deviating from the manufacturer's painting guidelines may cause the warranty to be voided.

### CAUTIONS

For Exterior use only  
Protect from freezing.  
Non-photochemically reactive.

Not for use on floors.

Before using, carefully read **CAUTIONS on label**

**ZINC:** Use only with adequate ventilation. To avoid overexposure, open windows and doors or use other means to ensure fresh air entry during application and drying. If you experience eye watering, headaches, or dizziness, increase fresh air, or wear respiratory protection (NIOSH approved) or leave the area. Avoid contact with eyes and skin. Wash hands after using. Keep container closed when not in use. Do not transfer contents to other containers for storage. **FIRST AID:** In case of eye contact, flush thoroughly with large amounts of water. Get medical attention if irritation persists. If swallowed, call Poison Control Center, hospital emergency room, or physician immediately.

**WARNING:** This product contains chemicals known to the State of California to cause cancer and birth defects or other reproductive harm. **DO NOT TAKE INTERNALLY. KEEP OUT OF THE REACH OF CHILDREN.**

HOTW 08/31/2020 A89W02151 02 39  
FRC,SP

### CLEANUP INFORMATION

Clean spills, splatters, hands and tools immediately after use with soap and warm water. After cleaning, flush spray equipment with compliant cleanup solvent to prevent rusting of the equipment. Follow manufacturer's safety recommendations when using solvents.



# SAFETY DATA SHEET

A89T154

## Section 1. Identification

**Product name** : SUPERPAINT® Exterior Acrylic Latex Satin  
Ultradeep Base

**Product code** : A89T154

**Other means of identification** : Not available.

**Product type** : Liquid.

**Relevant identified uses of the substance or mixture and uses advised against**

Paint or paint related material.

**Manufacturer** : THE SHERWIN-WILLIAMS COMPANY  
101 W. Prospect Avenue  
Cleveland, OH 44115

**Emergency telephone number of the company** : US / Canada: (800) 424-9300  
Mexico: SETIQ 800-00-214-00 / 55-5559-1588 Available 24 hours and 365 days a year

**Product Information Telephone Number** : US / Canada: 1-800-474-3794  
Mexico: Not Available

**Regulatory Information Telephone Number** : US / Canada: (216) 566-2902  
Mexico: Not Available

**Transportation Emergency Telephone Number** : US / Canada: (800) 424-9300  
Mexico: SETIQ 800-00-214-00 / 55-5559-1588 Available 24 hours and 365 days a year

## Section 2. Hazards identification

**OSHA/HCS status** : This material is considered hazardous by the OSHA Hazard Communication Standard (29 CFR 1910.1200).

**Classification of the substance or mixture** : CARCINOGENICITY - Category 1A

### GHS label elements

**Hazard pictograms** :



**Signal word** : Danger

**Hazard statements** : May cause cancer.

### Precautionary statements

**General** : Read label before use. Keep out of reach of children. If medical advice is needed, have product container or label at hand.

**Prevention** : Obtain special instructions before use. Do not handle until all safety precautions have been read and understood. Wear protective gloves, protective clothing and eye or face protection.

**Response** : IF exposed or concerned: Get medical advice or attention.

<b>Date of issue/Date of revision</b> : 1/27/2023	<b>Date of previous issue</b> : 11/25/2022	<b>Version</b> : 14.01	1/12
A89T154	SUPERPAINT® Exterior Acrylic Latex Satin Ultradeep Base	<b>SHW-85-NA-GHS-US</b>	

## Section 2. Hazards identification

- Storage** : Store locked up.
- Disposal** : Dispose of contents and container in accordance with all local, regional, national and international regulations.
- Supplemental label elements** : WARNING: This product contains chemicals known to the State of California to cause cancer and birth defects or other reproductive harm. Adequate ventilation required when sanding or abrading the dried film. If Adequate ventilation cannot be provided wear an approved particulate respirator (NIOSH approved). Follow respirator manufacturer's directions for respirator use. DELAYED EFFECTS FROM LONG TERM OVEREXPOSURE. Abrading or sanding of the dry film may release Crystalline Silica which has been shown to cause lung damage and cancer under long term exposure. Please refer to the SDS for additional information. Keep out of reach of children. Do not transfer contents to other containers for storage.
- Hazards not otherwise classified** : None known.

## Section 3. Composition/information on ingredients

- Substance/mixture** : Mixture
- Other means of identification** : Not available.

### CAS number/other identifiers

Ingredient name	% by weight	CAS number
Heavy Paraffinic Oil	≤1	64742-65-0
Cristobalite, respirable powder	≤0.3	14464-46-1

Any concentration shown as a range is to protect confidentiality or is due to batch variation.

**There are no additional ingredients present which, within the current knowledge of the supplier and in the concentrations applicable, are classified and hence require reporting in this section.**

Occupational exposure limits, if available, are listed in Section 8.

## Section 4. First aid measures

### Description of necessary first aid measures

- Eye contact** : Immediately flush eyes with plenty of water, occasionally lifting the upper and lower eyelids. Check for and remove any contact lenses. Continue to rinse for at least 10 minutes. Get medical attention.
- Inhalation** : Remove victim to fresh air and keep at rest in a position comfortable for breathing. If not breathing, if breathing is irregular or if respiratory arrest occurs, provide artificial respiration or oxygen by trained personnel. It may be dangerous to the person providing aid to give mouth-to-mouth resuscitation. Get medical attention. If unconscious, place in recovery position and get medical attention immediately. Maintain an open airway. Loosen tight clothing such as a collar, tie, belt or waistband.
- Skin contact** : Flush contaminated skin with plenty of water. Remove contaminated clothing and shoes. Wash contaminated clothing thoroughly with water before removing it, or wear gloves. Continue to rinse for at least 10 minutes. Get medical attention. Wash clothing before reuse. Clean shoes thoroughly before reuse.
- Ingestion** : Wash out mouth with water. Remove dentures if any. If material has been swallowed and the exposed person is conscious, give small quantities of water to drink. Stop if the exposed person feels sick as vomiting may be dangerous. Do not induce vomiting unless directed to do so by medical personnel. If vomiting occurs, the head should be kept low so that vomit does not enter the lungs. Get medical attention. Never give anything by mouth to an unconscious person. If unconscious, place in recovery position and get medical attention immediately. Maintain an open airway. Loosen tight clothing such as a collar, tie, belt or waistband.

## Section 4. First aid measures

### Most important symptoms/effects, acute and delayed

#### Potential acute health effects

- Eye contact** : No known significant effects or critical hazards.
- Inhalation** : No known significant effects or critical hazards.
- Skin contact** : No known significant effects or critical hazards.
- Ingestion** : No known significant effects or critical hazards.

#### Over-exposure signs/symptoms

- Eye contact** : No specific data.
- Inhalation** : No specific data.
- Skin contact** : No specific data.
- Ingestion** : No specific data.

### Indication of immediate medical attention and special treatment needed, if necessary

- Notes to physician** : Treat symptomatically. Contact poison treatment specialist immediately if large quantities have been ingested or inhaled.
- Specific treatments** : No specific treatment.
- Protection of first-aiders** : No action shall be taken involving any personal risk or without suitable training. If it is suspected that fumes are still present, the rescuer should wear an appropriate mask or self-contained breathing apparatus. It may be dangerous to the person providing aid to give mouth-to-mouth resuscitation. Wash contaminated clothing thoroughly with water before removing it, or wear gloves.

See toxicological information (Section 11)

## Section 5. Fire-fighting measures

### Extinguishing media

- Suitable extinguishing media** : Use an extinguishing agent suitable for the surrounding fire.
- Unsuitable extinguishing media** : None known.

**Specific hazards arising from the chemical** : In a fire or if heated, a pressure increase will occur and the container may burst.

- Hazardous thermal decomposition products** : Decomposition products may include the following materials:  
carbon dioxide  
carbon monoxide

**Special protective actions for fire-fighters** : Promptly isolate the scene by removing all persons from the vicinity of the incident if there is a fire. No action shall be taken involving any personal risk or without suitable training.

**Special protective equipment for fire-fighters** : Fire-fighters should wear appropriate protective equipment and self-contained breathing apparatus (SCBA) with a full face-piece operated in positive pressure mode.

## Section 6. Accidental release measures

### Personal precautions, protective equipment and emergency procedures

- For non-emergency personnel** : No action shall be taken involving any personal risk or without suitable training. Evacuate surrounding areas. Keep unnecessary and unprotected personnel from entering. Do not touch or walk through spilled material. Avoid breathing vapor or mist. Provide adequate ventilation. Wear appropriate respirator when ventilation is inadequate. Put on appropriate personal protective equipment.
- For emergency responders** : If specialized clothing is required to deal with the spillage, take note of any information in Section 8 on suitable and unsuitable materials. See also the information in "For non-emergency personnel".
- Environmental precautions** : Avoid dispersal of spilled material and runoff and contact with soil, waterways, drains and sewers. Inform the relevant authorities if the product has caused environmental pollution (sewers, waterways, soil or air).

### Methods and materials for containment and cleaning up

- Small spill** : Stop leak if without risk. Move containers from spill area. Dilute with water and mop up if water-soluble. Alternatively, or if water-insoluble, absorb with an inert dry material and place in an appropriate waste disposal container. Dispose of via a licensed waste disposal contractor.
- Large spill** : Stop leak if without risk. Move containers from spill area. Approach release from upwind. Prevent entry into sewers, water courses, basements or confined areas. Wash spillages into an effluent treatment plant or proceed as follows. Contain and collect spillage with non-combustible, absorbent material e.g. sand, earth, vermiculite or diatomaceous earth and place in container for disposal according to local regulations (see Section 13). Dispose of via a licensed waste disposal contractor. Contaminated absorbent material may pose the same hazard as the spilled product. Note: see Section 1 for emergency contact information and Section 13 for waste disposal.

## Section 7. Handling and storage

### Precautions for safe handling

- Protective measures** : Put on appropriate personal protective equipment (see Section 8). Avoid exposure - obtain special instructions before use. Do not handle until all safety precautions have been read and understood. Do not get in eyes or on skin or clothing. Do not ingest. Avoid breathing vapor or mist. If during normal use the material presents a respiratory hazard, use only with adequate ventilation or wear appropriate respirator. Keep in the original container or an approved alternative made from a compatible material, kept tightly closed when not in use. Empty containers retain product residue and can be hazardous. Do not reuse container.
- Advice on general occupational hygiene** : Eating, drinking and smoking should be prohibited in areas where this material is handled, stored and processed. Workers should wash hands and face before eating, drinking and smoking. Remove contaminated clothing and protective equipment before entering eating areas. See also Section 8 for additional information on hygiene measures.
- Conditions for safe storage, including any incompatibilities** : Store in accordance with local regulations. Store in original container protected from direct sunlight in a dry, cool and well-ventilated area, away from incompatible materials (see Section 10) and food and drink. Store locked up. Keep container tightly closed and sealed until ready for use. Containers that have been opened must be carefully resealed and kept upright to prevent leakage. Do not store in unlabeled containers. Use appropriate containment to avoid environmental contamination. See Section 10 for incompatible materials before handling or use.

## Section 8. Exposure controls/personal protection

### Control parameters

#### Occupational exposure limits (OSHA United States)

Ingredient name	CAS #	Exposure limits
Heavy Paraffinic Oil	64742-65-0	<p><b>OSHA PEL (United States, 5/2018). [Oil mist, mineral]</b> TWA: 5 mg/m<sup>3</sup> 8 hours.</p> <p><b>ACGIH TLV (United States, 1/2022). [Mineral Oil, pure, highly and severely refined]</b> TWA: 5 mg/m<sup>3</sup> 8 hours. Form: Inhalable fraction</p> <p><b>NIOSH REL (United States, 10/2020). [OIL MIST MINERAL]</b> TWA: 5 mg/m<sup>3</sup> 10 hours. Form: Mist STEL: 10 mg/m<sup>3</sup> 15 minutes. Form: Mist</p>
Cristobalite, respirable powder	14464-46-1	<p><b>OSHA PEL Z3 (United States, 6/2016).</b> TWA: 250 mppcf / 2 x (%SiO<sub>2</sub>+5) 8 hours. Form: Respirable</p> <p>TWA: 10 mg/m<sup>3</sup> / 2 x (%SiO<sub>2</sub>+2) 8 hours. Form: Respirable</p> <p>TWA: 30 mg/m<sup>3</sup> / 2 x (%SiO<sub>2</sub>+2) 8 hours. Form: Total dust</p> <p><b>OSHA PEL (United States, 5/2018). [Silica, crystalline]</b> TWA: 50 µg/m<sup>3</sup> 8 hours. Form: Respirable dust</p> <p><b>ACGIH TLV (United States, 1/2022). [Silica, crystalline]</b> TWA: 0.025 mg/m<sup>3</sup> 8 hours. Form: Respirable fraction</p> <p><b>NIOSH REL (United States, 10/2020). [SILICA, CRYSTALLINE]</b> TWA: 0.05 mg/m<sup>3</sup> 10 hours. Form: respirable dust</p>

#### Occupational exposure limits (Canada)

Ingredient name	CAS #	Exposure limits
Cristobalite	14464-46-1	<p><b>CA British Columbia Provincial (Canada, 3/2022). [Silica, Crystalline - alpha quartz and Cristobalite]</b> TWA: 0.025 mg/m<sup>3</sup> 8 hours. Form: Respirable</p> <p><b>CA Quebec Provincial (Canada, 6/2021).</b> TWAEV: 0.05 mg/m<sup>3</sup> 8 hours. Form: Respirable dust.</p> <p><b>CA Alberta Provincial (Canada, 6/2018).</b> 8 hrs OEL: 0.025 mg/m<sup>3</sup> 8 hours. Form: Respirable particulate</p> <p><b>CA Ontario Provincial (Canada, 6/2019).</b> TWA: 0.05 mg/m<sup>3</sup> 8 hours. Form: Respirable particulate matter.</p> <p><b>CA Saskatchewan Provincial (Canada, 7/2013).</b> TWA: 0.05 mg/m<sup>3</sup> 8 hours. Form: respirable fraction</p>

## Section 8. Exposure controls/personal protection

--	--	--

### Occupational exposure limits (Mexico)

	CAS #	Exposure limits
None.		

**Appropriate engineering controls** : If user operations generate dust, fumes, gas, vapor or mist, use process enclosures, local exhaust ventilation or other engineering controls to keep worker exposure to airborne contaminants below any recommended or statutory limits.

**Environmental exposure controls** : Emissions from ventilation or work process equipment should be checked to ensure they comply with the requirements of environmental protection legislation. In some cases, fume scrubbers, filters or engineering modifications to the process equipment will be necessary to reduce emissions to acceptable levels.

### Individual protection measures

**Hygiene measures** : Wash hands, forearms and face thoroughly after handling chemical products, before eating, smoking and using the lavatory and at the end of the working period. Appropriate techniques should be used to remove potentially contaminated clothing. Wash contaminated clothing before reusing. Ensure that eyewash stations and safety showers are close to the workstation location.

**Eye/face protection** : Safety eyewear complying with an approved standard should be used when a risk assessment indicates this is necessary to avoid exposure to liquid splashes, mists, gases or dusts. If contact is possible, the following protection should be worn, unless the assessment indicates a higher degree of protection: safety glasses with side-shields.

### Skin protection

**Hand protection** : Chemical-resistant, impervious gloves complying with an approved standard should be worn at all times when handling chemical products if a risk assessment indicates this is necessary. Considering the parameters specified by the glove manufacturer, check during use that the gloves are still retaining their protective properties. It should be noted that the time to breakthrough for any glove material may be different for different glove manufacturers. In the case of mixtures, consisting of several substances, the protection time of the gloves cannot be accurately estimated.

**Body protection** : Personal protective equipment for the body should be selected based on the task being performed and the risks involved and should be approved by a specialist before handling this product.

**Other skin protection** : Appropriate footwear and any additional skin protection measures should be selected based on the task being performed and the risks involved and should be approved by a specialist before handling this product.

**Respiratory protection** : Based on the hazard and potential for exposure, select a respirator that meets the appropriate standard or certification. Respirators must be used according to a respiratory protection program to ensure proper fitting, training, and other important aspects of use.

## Section 9. Physical and chemical properties

The conditions of measurement of all properties are at standard temperature and pressure unless otherwise indicated.

### Appearance

**Physical state** : Liquid.

**Color** : Not available.

**Odor** : Not available.

**Odor threshold** : Not available.

**pH** : 9

<b>Date of issue/Date of revision</b> : 1/27/2023	<b>Date of previous issue</b> : 11/25/2022	<b>Version</b> : 14.01	6/12
A89T154	SUPERPAINT® Exterior Acrylic Latex Satin Ultradeep Base	<b>SHW-85-NA-GHS-US</b>	

## Section 9. Physical and chemical properties

- Melting point/freezing point** : Not available.
- Boiling point, initial boiling point, and boiling range** : 100°C (212°F)
- Flash point** : Closed cup: Not applicable.
- Evaporation rate** : 0.09 (butyl acetate = 1)
- Flammability** : Not available.
- Lower and upper explosion limit/flammability limit** : Not available.
- Vapor pressure** : 2.3 kPa (17.5 mm Hg)
- Relative vapor density** : 1 [Air = 1]
- Relative density** : 1.12
- Solubility(ies)** :

Media	Result
cold water	Partially soluble

- Partition coefficient: n-octanol/water** : Not applicable.
- Auto-ignition temperature** : Not available.
- Decomposition temperature** : Not available.
- Viscosity** : Kinematic (40°C (104°F)): >20.5 mm<sup>2</sup>/s (>20.5 cSt)
- Molecular weight** : Not applicable.
- Aerosol product**
  - Heat of combustion** : 1.635 kJ/g

## Section 10. Stability and reactivity

- Reactivity** : No specific test data related to reactivity available for this product or its ingredients.
- Chemical stability** : The product is stable.
- Possibility of hazardous reactions** : Under normal conditions of storage and use, hazardous reactions will not occur.
- Conditions to avoid** : No specific data.
- Incompatible materials** : No specific data.
- Hazardous decomposition products** : Under normal conditions of storage and use, hazardous decomposition products should not be produced.

## Section 11. Toxicological information

### Information on toxicological effects

#### Acute toxicity

Product/ingredient name	Result	Species	Dose	Exposure
Heavy Paraffinic Oil	LD50 Dermal	Rabbit	>5000 mg/kg	-
	LD50 Oral	Rat	>5000 mg/kg	-

#### Irritation/Corrosion

# Section 11. Toxicological information

Not available.

## Sensitization

Not available.

## Mutagenicity

Not available.

## Carcinogenicity

Not available.

## Classification

Product/ingredient name	OSHA	IARC	NTP
Cristobalite, respirable powder	-	1	Known to be a human carcinogen.

## Reproductive toxicity

Not available.

## Teratogenicity

Not available.

## Specific target organ toxicity (single exposure)

Not available.

## Specific target organ toxicity (repeated exposure)

Name	Category	Route of exposure	Target organs
Cristobalite, respirable powder	Category 1	inhalation	respiratory tract

## Aspiration hazard

Name	Result
Heavy Paraffinic Oil	ASPIRATION HAZARD - Category 1

**Information on the likely routes of exposure** : Not available.

## Potential acute health effects

- Eye contact** : No known significant effects or critical hazards.
- Inhalation** : No known significant effects or critical hazards.
- Skin contact** : No known significant effects or critical hazards.
- Ingestion** : No known significant effects or critical hazards.

## Symptoms related to the physical, chemical and toxicological characteristics

- Eye contact** : No specific data.
- Inhalation** : No specific data.
- Skin contact** : No specific data.
- Ingestion** : No specific data.

## Delayed and immediate effects and also chronic effects from short and long term exposure

### Short term exposure



## Section 11. Toxicological information

**Potential immediate effects** : Not available.

**Potential delayed effects** : Not available.

### Long term exposure

**Potential immediate effects** : Not available.

**Potential delayed effects** : Not available.

### Potential chronic health effects

Not available.

**General** : No known significant effects or critical hazards.

**Carcinogenicity** : May cause cancer. Risk of cancer depends on duration and level of exposure.

**Mutagenicity** : No known significant effects or critical hazards.

**Teratogenicity** : No known significant effects or critical hazards.

**Developmental effects** : No known significant effects or critical hazards.

**Fertility effects** : No known significant effects or critical hazards.

### Numerical measures of toxicity

#### Acute toxicity estimates

Not available.

## Section 12. Ecological information

### Toxicity

Not available.

### Persistence and degradability

Not available.

### Bioaccumulative potential

Not available.

### Mobility in soil

**Soil/water partition coefficient (K<sub>oc</sub>)** : Not available.

**Other adverse effects** : No known significant effects or critical hazards.

## Section 13. Disposal considerations

**Disposal methods** : The generation of waste should be avoided or minimized wherever possible. Disposal of this product, solutions and any by-products should at all times comply with the requirements of environmental protection and waste disposal legislation and any regional local authority requirements. Dispose of surplus and non-recyclable products via a licensed waste disposal contractor. Waste should not be disposed of untreated to the sewer unless fully compliant with the requirements of all authorities with jurisdiction. Waste packaging should be recycled. Incineration or landfill should only be considered when recycling is not feasible. This material and its container must be disposed of in a

## Section 13. Disposal considerations

safe way. Care should be taken when handling emptied containers that have not been cleaned or rinsed out. Empty containers or liners may retain some product residues. Avoid dispersal of spilled material and runoff and contact with soil, waterways, drains and sewers.

## Section 14. Transport information

	DOT Classification	TDG Classification	Mexico Classification	IATA	IMDG
<b>UN number</b>	Not regulated.	Not regulated.	Not regulated.	Not regulated.	Not regulated.
<b>UN proper shipping name</b>	-	-	-	-	-
<b>Transport hazard class(es)</b>	-	-	-	-	-
<b>Packing group</b>	-	-	-	-	-
<b>Environmental hazards</b>	No.	No.	No.	No.	No.
<b>Additional information</b>	-	-	-	-	-

**Special precautions for user** : Multi-modal shipping descriptions are provided for informational purposes and do not consider container sizes. The presence of a shipping description for a particular mode of transport (sea, air, etc.), does not indicate that the product is packaged suitably for that mode of transport. All packaging must be reviewed for suitability prior to shipment, and compliance with the applicable regulations is the sole responsibility of the person offering the product for transport. People loading and unloading dangerous goods must be trained on all of the risks deriving from the substances and on all actions in case of emergency situations.

**Transport in bulk according to IMO instruments** : Not available.

**Proper shipping name** : Not available.

## Section 15. Regulatory information

**TSCA 5(a)2 proposed significant new use rules:** 2-Methyl-4-isothiazolin-3-one; 5-Chloro-2-methylisothiazolinone

**SARA 313**

SARA 313 (40 CFR 372.45) supplier notification can be found on the Environmental Data Sheet.

**California Prop. 65**

WARNING: This product contains chemicals known to the State of California to cause cancer and birth defects or other reproductive harm.

**International regulations**

## Section 15. Regulatory information

**International lists** :

- Australia inventory (AIC)**: Not determined.
- China inventory (IECSC)**: Not determined.
- Japan inventory (CSCL)**: Not determined.
- Japan inventory (ISHL)**: Not determined.
- Korea inventory (KECI)**: Not determined.
- New Zealand Inventory of Chemicals (NZIoC)**: Not determined.
- Philippines inventory (PICCS)**: Not determined.
- Taiwan Chemical Substances Inventory (TCSI)**: Not determined.
- Thailand inventory**: Not determined.
- Turkey inventory**: Not determined.
- Vietnam inventory**: Not determined.

## Section 16. Other information

### Hazardous Material Information System (U.S.A.)

Health	*	0
Flammability		0
Physical hazards		0

The customer is responsible for determining the PPE code for this material. For more information on HMIS® Personal Protective Equipment (PPE) codes, consult the HMIS® Implementation Manual.

**Caution:** HMIS® ratings are based on a 0-4 rating scale, with 0 representing minimal hazards or risks, and 4 representing significant hazards or risks. Although HMIS® ratings and the associated label are not required on SDSs or products leaving a facility under 29 CFR 1910.1200, the preparer may choose to provide them. HMIS® ratings are to be used with a fully implemented HMIS® program. HMIS® is a registered trademark and service mark of the American Coatings Association, Inc.

### Procedure used to derive the classification

Classification	Justification
CARCINOGENICITY - Category 1A	Calculation method

### History

**Date of printing** : 1/27/2023

**Date of issue/Date of revision** : 1/27/2023

**Date of previous issue** : 11/25/2022

**Version** : 14.01

**Key to abbreviations** :

- ATE = Acute Toxicity Estimate
- BCF = Bioconcentration Factor
- GHS = Globally Harmonized System of Classification and Labelling of Chemicals
- IATA = International Air Transport Association
- IBC = Intermediate Bulk Container
- IMDG = International Maritime Dangerous Goods
- LogPow = logarithm of the octanol/water partition coefficient
- MARPOL = International Convention for the Prevention of Pollution From Ships, 1973 as modified by the Protocol of 1978. ("Marpol" = marine pollution)
- N/A = Not available
- SGG = Segregation Group
- UN = United Nations

📌 Indicates information that has changed from previously issued version.

### Notice to reader

## Section 16. Other information

It is recommended that each customer or recipient of this Safety Data Sheet (SDS) study it carefully and consult resources, as necessary or appropriate, to become aware of and understand the data contained in this SDS and any hazards associated with the product. This information is provided in good faith and believed to be accurate as of the effective date herein. However, no warranty, express or implied, is given. The information presented here applies only to the product as shipped. The addition of any material can change the composition, hazards and risks of the product. Products shall not be repackaged, modified, or tinted except as specifically instructed by the manufacturer, including but not limited to the incorporation of products not specified by the manufacturer, or the use or addition of products in proportions not specified by the manufacturer. Regulatory requirements are subject to change and may differ between various locations and jurisdictions. The customer/buyer/user is responsible to ensure that his activities comply with all country, federal, state, provincial or local laws. The conditions for use of the product are not under the control of the manufacturer; the customer/buyer/user is responsible to determine the conditions necessary for the safe use of this product. The customer/buyer/user should not use the product for any purpose other than the purpose shown in the applicable section of this SDS without first referring to the supplier and obtaining written handling instructions. Due to the proliferation of sources for information such as manufacturer-specific SDS, the manufacturer cannot be responsible for SDSs obtained from any other source.

# ENVIRONMENTAL DATA SHEET

(Certified Product Data Sheet)

42 00 [0973]

Date of Preparation  
Apr 7, 2023

**PRODUCT NUMBER**

A89T154

**PRODUCT NAME**

SUPERPAINT® Exterior Acrylic Latex Satin, Ultradeep Base

**MANUFACTURER'S NAME**

THE SHERWIN-WILLIAMS COMPANY  
101 W. Prospect Avenue  
Cleveland, OH 44115

This document includes all data required by 40 CFR 63.801(a) for a Certified Product Data Sheet under criteria specified in 40 CFR 63.805(a). All data given below are MAXIMUM THEORETICAL VALUES based on the product AS CURRENTLY FORMULATED. Variations may occur on individual batches due to adjustments made during production.

**Hazard Category (for SARA 311.312)**

A89T154 = | Chronic |

**Product Weight**

9.34 lb/gal

**Specific Gravity**

1.12

**FLASH POINT**

N.A.

**Volatile Ingredients**

Chemical / Compound	SARA 302 EHS	CERCLA	SARA 313 TC	HAPS 112	% by Weight	% by Volume
Water 7732-18-5	N	N	N	N	53	61

**Volatile Organic Compounds - U.S. EPA / Canada**

	A89T154	
	LB/Gal	g/L
Coating Density	9.34	1118
	By wt	By vol
Total Volatiles	54.8%	62.5%
Federally exempt solvents		
Water	53.2%	60.8%
Non-Organic Volatiles		
Ammonium Hydroxide	0.1%	0.2%
Organic Volatiles	1.4%	1.6%
Percent Non-Volatile	45.2%	37.5%
VOC Content	LB/Gal	g/L
Total	0.13	15
Less exempt solvents	0.33	40
Of solids	0.35	42
Of solids	0.03 lb/lb	0.03 kg/kg
	By wt	
By wt LVP-VOC	0.0%	

Maximum Incremental Reactivity (MIR) (per US EPA Aerosol Ctg Rule, MIR Values 2009) **0.03**

### Volatile Organic Compounds - California

	A89T154	
	LB/Gal	g/L
Coating Density	9.34	1118
	By wt	By vol
Total Volatiles	54.8%	62.5%
Exempt solvents		
Water	53.2%	60.8%
Non-Organic Volatiles		
Ammonium Hydroxide	0.1%	0.2%
Organic Volatiles	1.4%	1.6%
Percent Non-Volatile	45.2%	37.5%
VOC Content	LB/Gal	g/L
Total	0.13	15
Less exempt solvents	0.33	40
Of solids	0.35	42
Of solids	0.03 lb/lb	0.03 kg/kg
	By wt	
By wt LVP-VOC	0.0%	

Maximum Incremental Reactivity (MIR) (per California Air Resources Board Aerosol Products Regulation, MIR Values 2010) **0.02**

### Volatile Organic Compounds - South Coast Air Quality Management District, California, US

	A89T154	
	LB/Gal	g/L
Coating Density	9.34	1118
	By wt	By vol
Total Volatiles	54.8%	62.5%
Exempt solvents		
Water	53.2%	60.8%
Non-Organic Volatiles		
Ammonium Hydroxide	0.1%	0.2%
Organic Volatiles	1.4%	1.6%
Percent Non-Volatile	45.2%	37.5%
VOC Content	LB/Gal	g/L
Total	0.13	15
Less exempt solvents	0.33	40
Of solids	0.35	42
Of solids	0.03 lb/lb	0.03 kg/kg

### Volatile Organic Compounds - EU Directive 2004/42/EC

	A89T154	
	By wt	By vol
Total Volatiles	54.1%	61.8%
VOC Content	LB/Gal	g/L
Total	0.07	8

### Volatile Organic Compounds - EU Directive 2010/75/EU

	A89T154	
	By wt	By vol
Total Volatiles	54.1%	61.8%
VOC Content	LB/Gal	g/L
Total	0.07	8

### Volatile Organic Compounds - Mexico

	A89T154	
	LB/Gal	g/L
Coating Density	9.34	1118
	By wt	By vol
Total Volatiles	54.8%	62.5%
Exempt solvents		
Water	53.2%	60.8%
Non-Organic Volatiles		
Ammonium Hydroxide	0.1%	0.2%
Organic Volatiles	1.4%	1.6%
Percent Non-Volatile	45.2%	37.5%
VOC Content	LB/Gal	g/L
Total	0.13	15
Less exempt solvents	0.33	40
Of solids	0.35	42
Of solids	0.03 lb/lb	0.03 kg/kg

### Hazardous Air Pollutants (Clean Air Act, Section 112(b))

	A89T154	
	LB/Gal	kg/L
Volatile HAPS	0.00	0.000
Of solids	0.00	0.000
Of solids	0.00 lb/lb	0.00 kg/kg

### Air Quality Data

#### Density of Organic Solvent Blend

8.28 lb/gal

#### Photochemically Reactive

No

### Additional Regulatory Information

#### US EPA TSCA:

Not Applicable

#### Relevant identified uses of the substance or mixture and uses advised against:

Not Applicable

### Waste Disposal

Waste from this product is not hazardous as defined under the Resource Conservation and Recovery Act (RCRA) 40 CFR 261.

Addition of reducers or other additives to this product may substantially alter the above data. Since conditions of use are outside our control, we make no warranties, express or implied, and assume no liability in connection with any use of this information.