

# Permit: RES2022\_00440

15083 Minock St, Detroit, MI 48223

## Checklist:

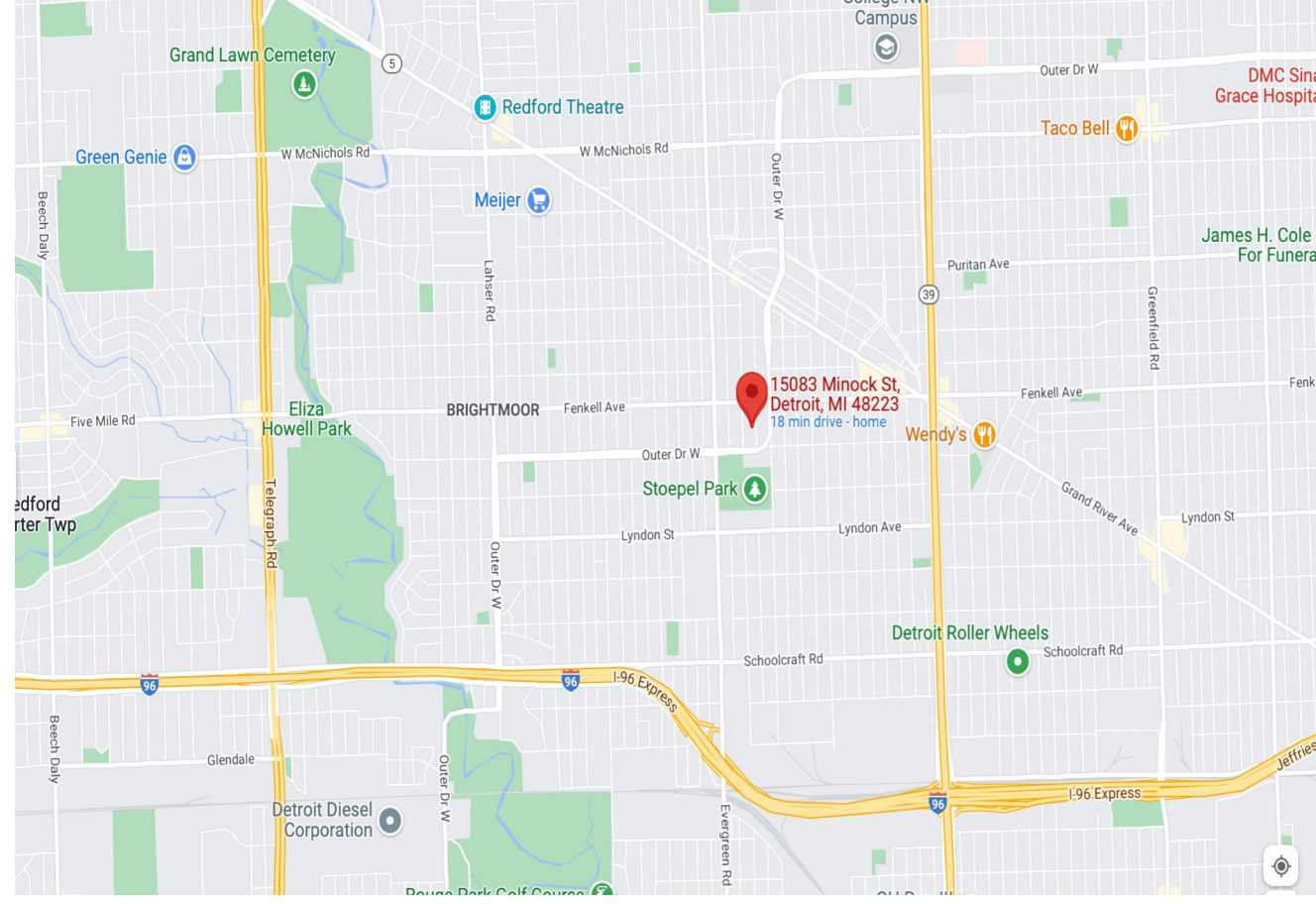
- Building permit has been filed with building department (RES2022\_00440)
- Current photographs are on elevations document (attached)
- Description of existing conditions: The back of the house has an improperly built addition that may have previously been a porch. At the site of the new garage, there is an old pad where there was previously an old garage that was demolished at some point in the past.
- Description of project: The old, improperly built addition will be demolished and a new, two story addition will be built in its place. We will also build a new garage in the location of a previous garage that was demolished at some point in the past. This is functioning as a demolition of a garage and a rebuild to correct the “violation” of the previously demolished garage. The new addition will include black windows (wood construction with aluminum cladding with an ovolo profile for any pane dividers), cement fiberboard lap board siding on first story, real wood cedar shake siding on second story, and black window trim. The rest of the house will be updated to match the new addition with black window trim and the old asphalt siding on the second floor of the house will be replaced with the same siding as the new addition (real wood cedar shake). The aluminum siding on the first story will remain as-is other than painting it white to match the rest of the house. In this way the entire house will be a cohesive design style. The old asphalt siding needs to be replaced due to its age, and the old mismatched window trim throughout the existing house will all match once again. The design will be a classic black and white style that fits the historical nature of the home, while being updated with modern materials to replace the old, worn out materials. We will also build a new deck off the back of the house, with an additional door added from the existing kitchen out to the new deck. There was a violation done between 2015-2020 to the front railing, where a modern black railing was added. We are proposing to replace this railing with a matching original wrought iron railing.

## Detailed Scope of Work:

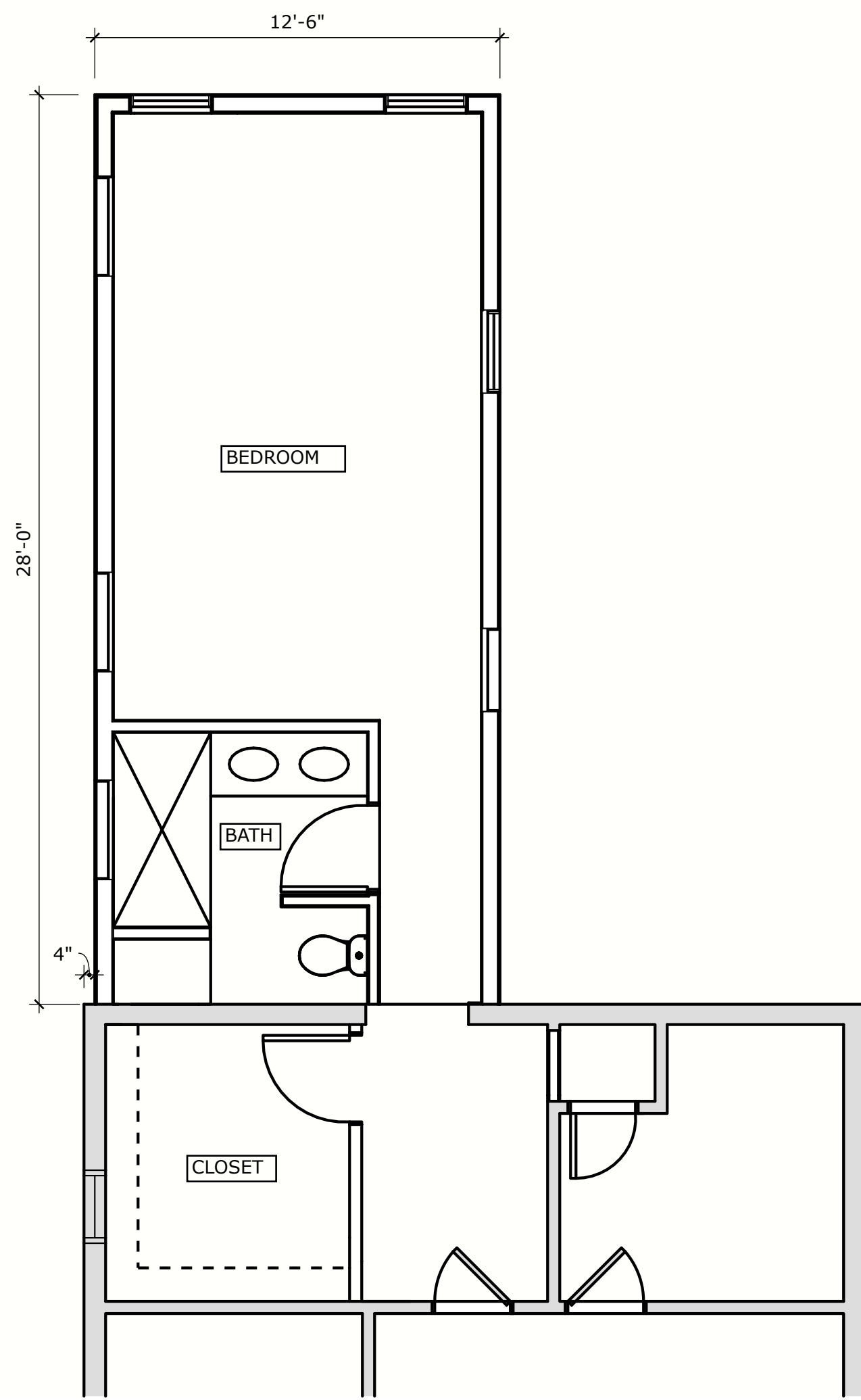
- Demo old, improperly built addition on back of house
- Demo old, cracked garage pad in the backyard. Correct previous violation of demolished garage by rebuilding new garage in its place.
- Pour new foundations for both the new garage (slab on grade foundation) and the new two story addition (poured concrete wall with crawl space). Detailed specs of foundations are in the submitted permit.
- Build the new two story addition (detailed specs available in permit) that contains a new main bedroom suite, new den, mechanical room, and new first floor bathroom.
- Build new garage in the location of the old (demolished) garage with a matching gambrel roof line to the existing house (details of build are in permit).

- Build a new deck off the back of the house with a new French door added to the existing kitchen (details of deck build are available in permit).
- All proposed materials are included in the elevations document and cut sheets attached.
- Leave existing front porch as-is apart from replacing missing railing section with new matching wrought-iron railing and replacing the aluminum stair railing with wrought-iron.

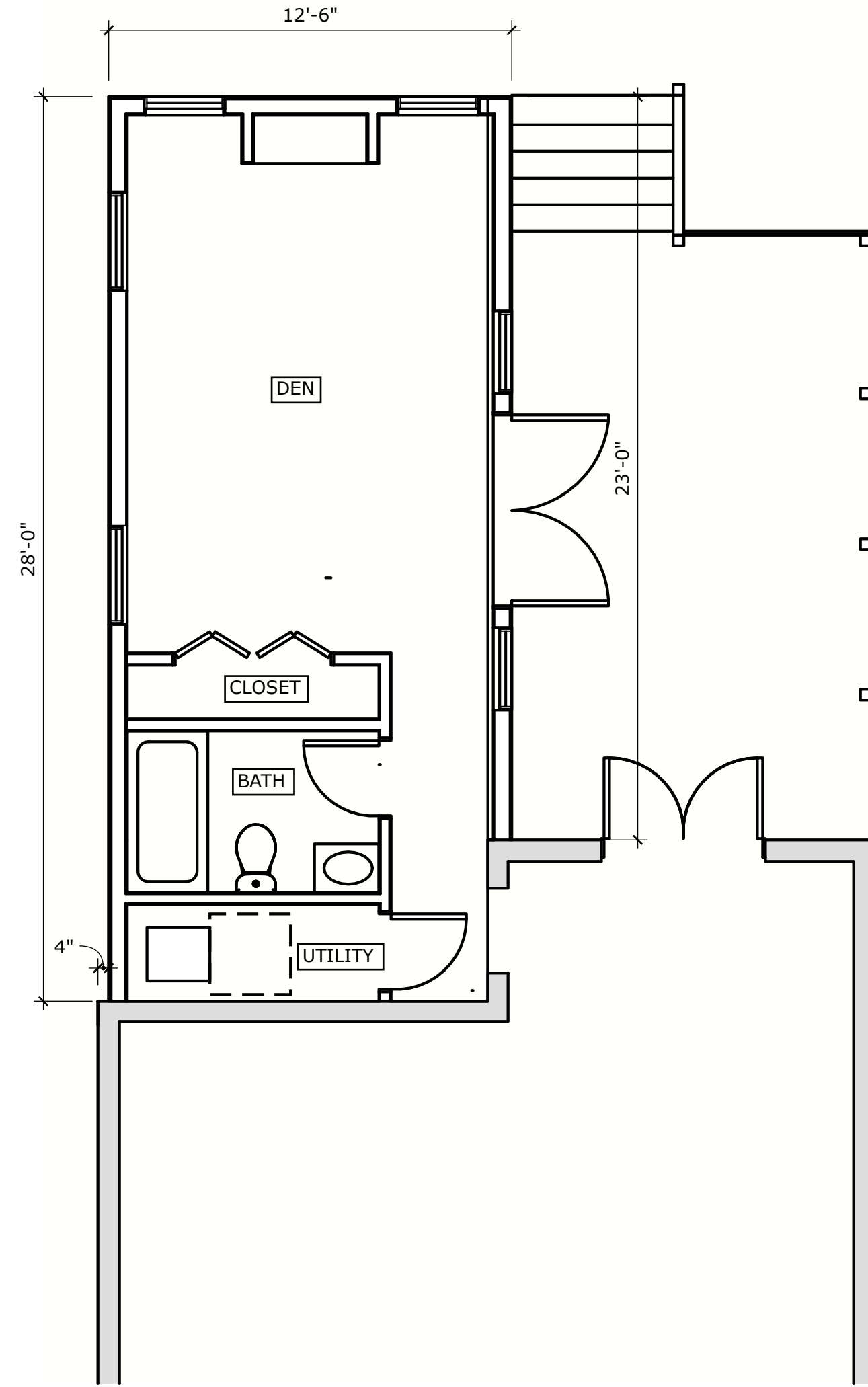
# ADDITION TO HOME 15083 MINOCK ST, DETROIT MI 48223



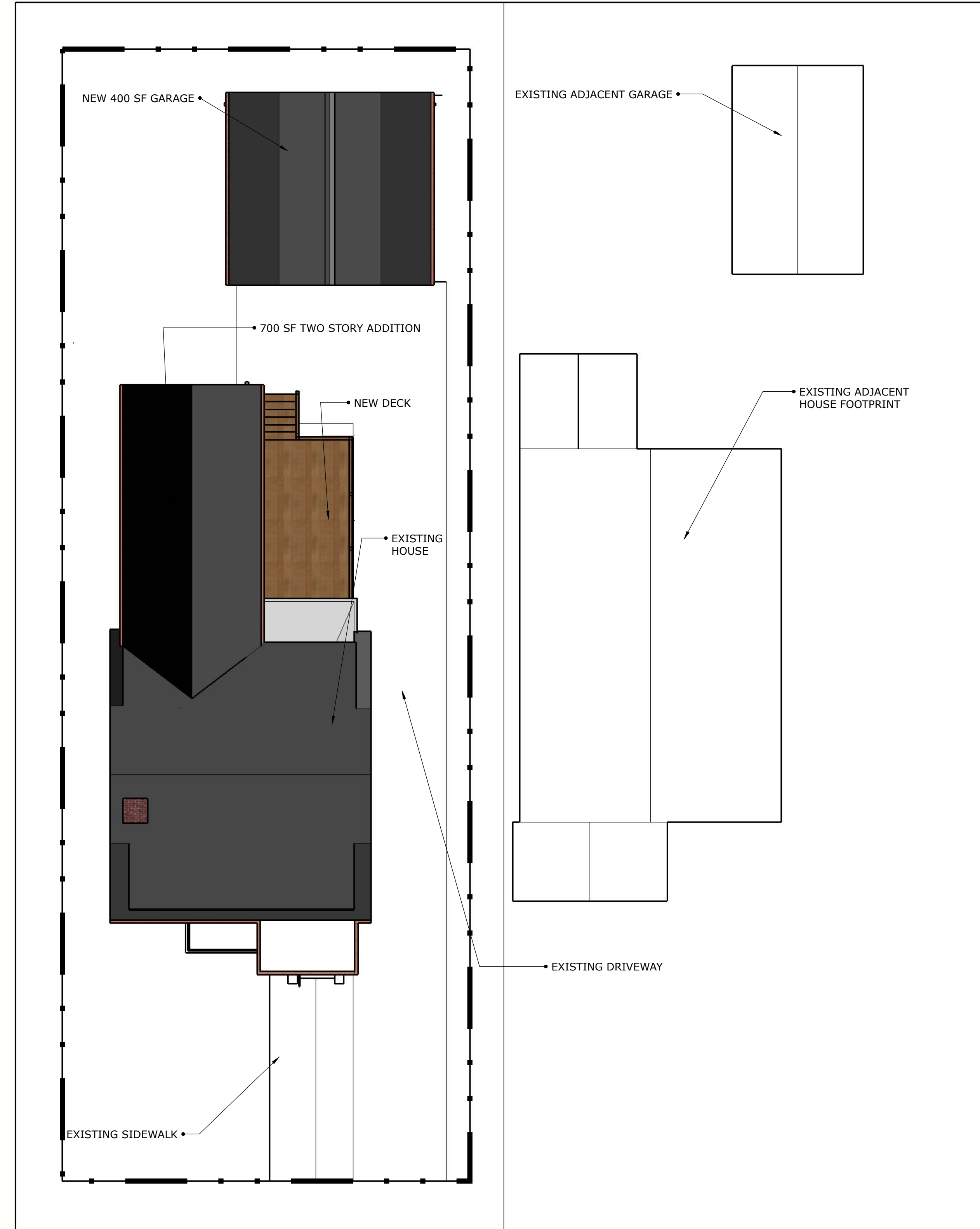
SCOPE OF WORK: 702 SF ADDITION TO EXISTING RESIDENTIAL HOME. NEW DECK AND GARAGE.  
 ZONED: R-1 RESIDENTIAL  
 ALLOWABLE LOT COVERAGE: 35%  
 PROPOSED LOT COVERAGE: 30%



3 SECOND FLOOR PLAN  
 HD-1 SCALE: 1/4" = 1'-0"



2 FIRST FLOOR PLAN  
 HD-1 SCALE: 1/4" = 1'-0"



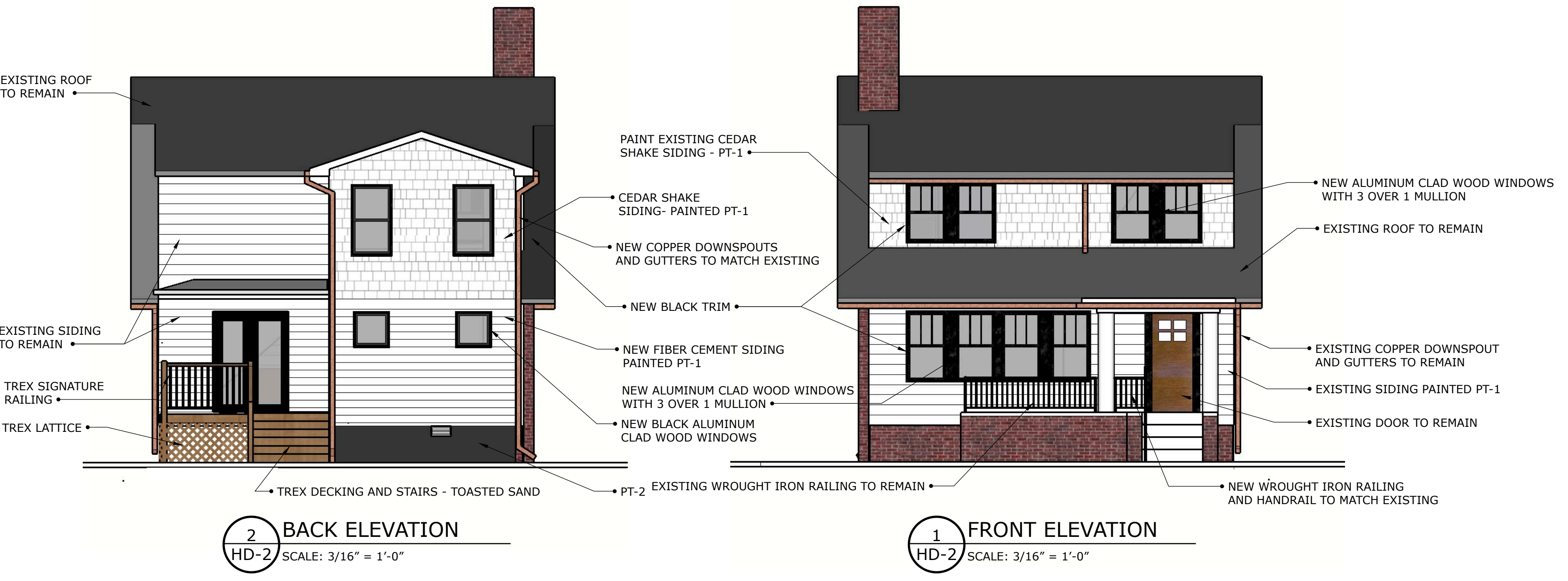
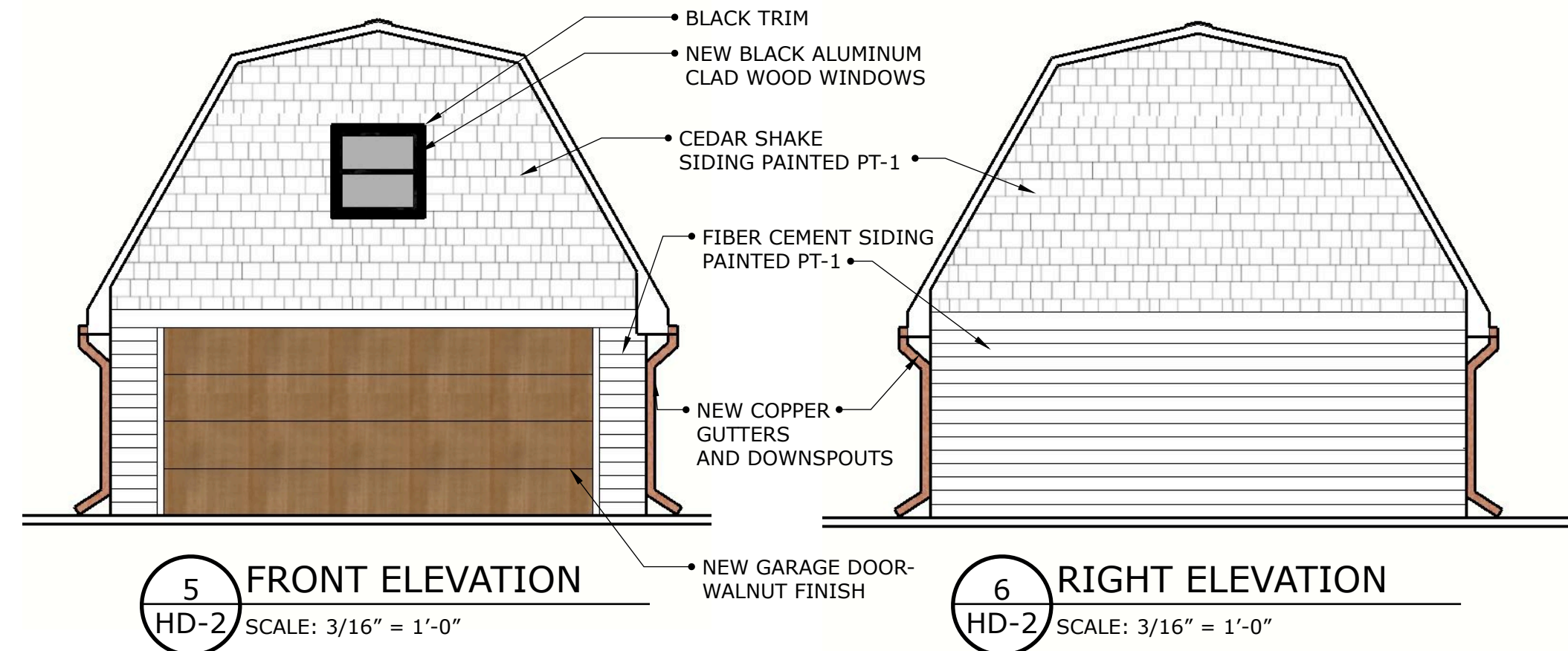
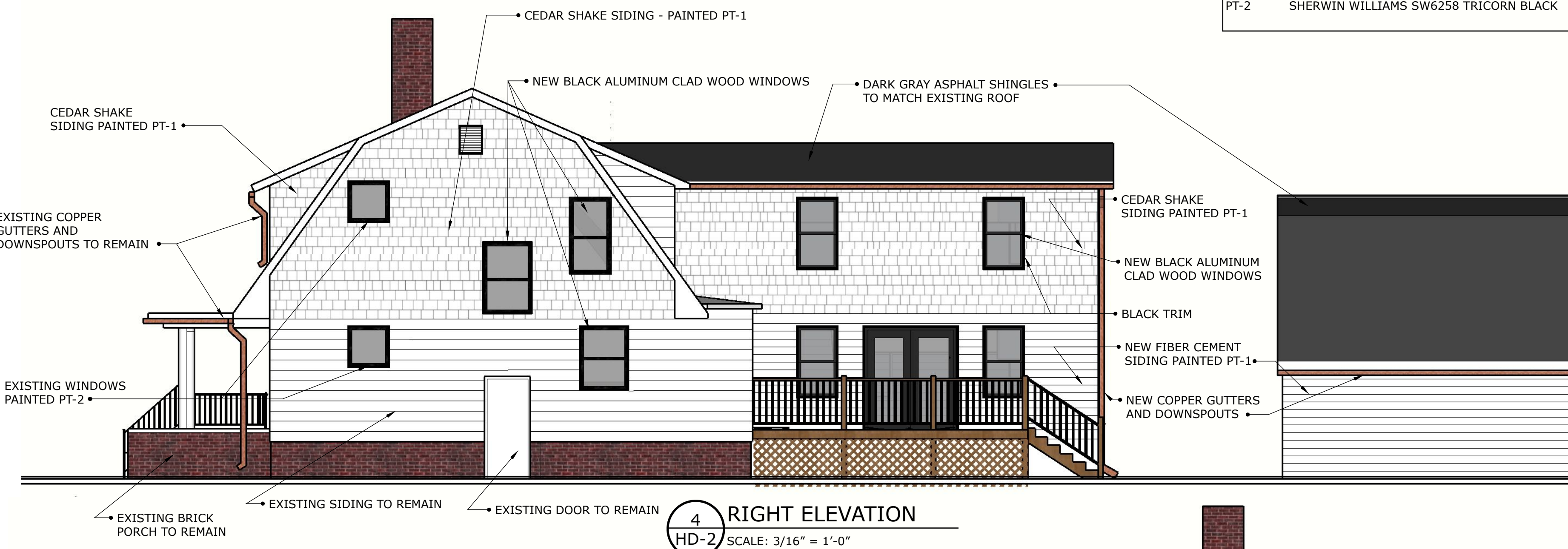
1 SITE PLAN  
 HD-1 SCALE: 1/8" = 1'-0"

ISSUE

HISTORIC DISTRICT COMMISSION  
 PROJECT REVIEW

HD-1

PAINT/STAIN SCHEDULE	
PT-1	SHERWIN WILLIAMS SW9542 NATURAL WHITE
PT-2	SHERWIN WILLIAMS SW6258 TRICORN BLACK

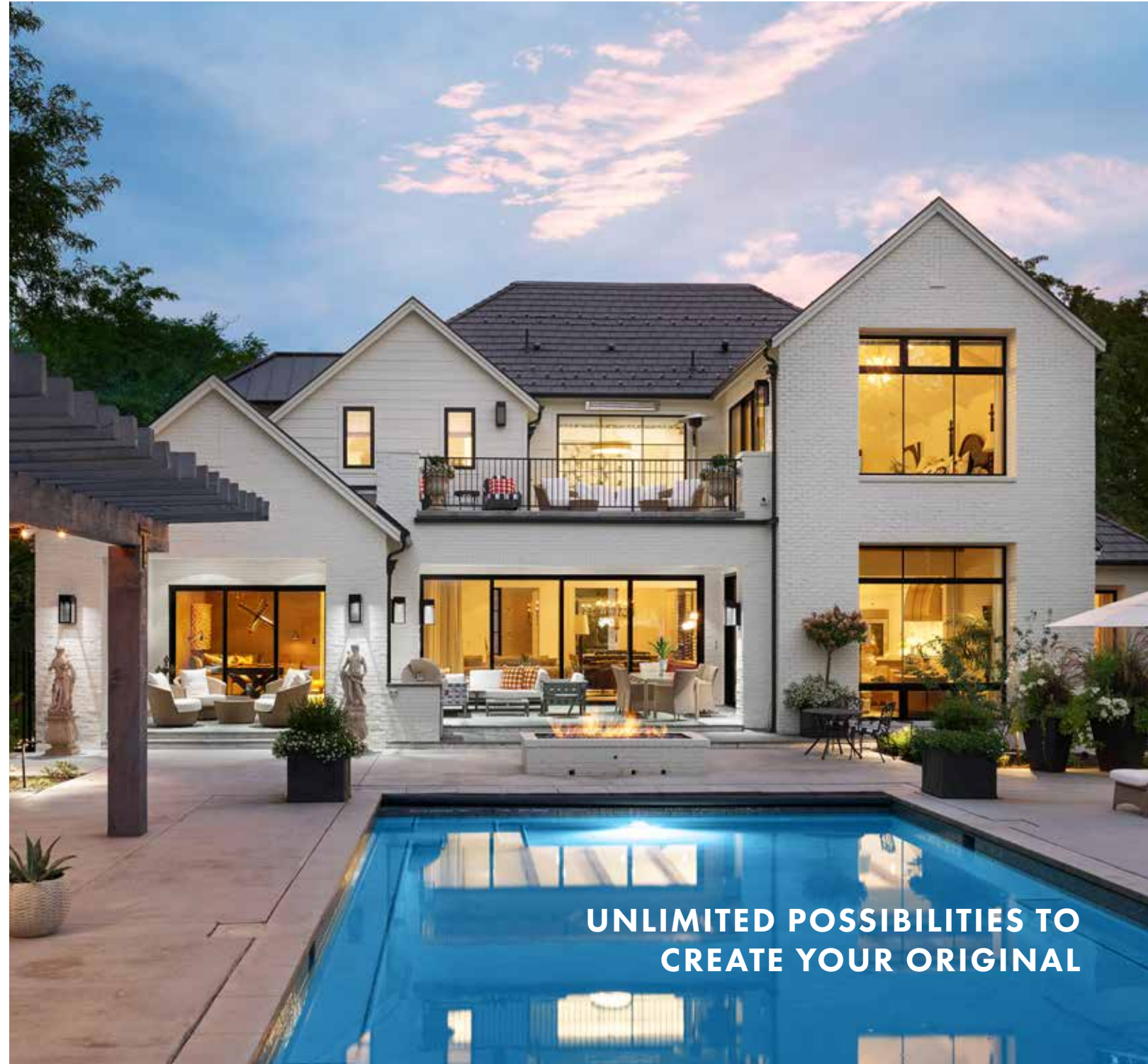


ISSUE  
12/01/2022

HISTORIC DISTRICT COMMISSION  
PROJECT REVIEW

HD-2

**E-SERIES**  
Architectural Collection



**UNLIMITED POSSIBILITIES TO  
CREATE YOUR ORIGINAL**

# MADE STRONG

Aluminum is a distinguishing element that enables us to offer the strength, beauty and design freedom for which E-Series products are known. Through decades of innovation, we have elevated the extruded aluminum-clad window and patio door category and perfected a made-to-order process that is unsurpassed.

## STRENGTH

We harness the full strength of aluminum with heavy gauge, extruded aluminum-clad wood sash and frames. Our thick cladding offers greater structural capabilities than thinner, roll-form aluminum, while providing a superior exterior finish that resists the elements of inclement weather, abrasion and impact.\*

## BEAUTY

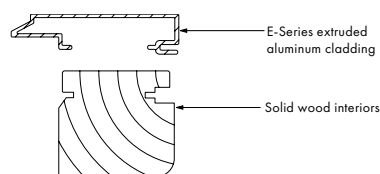
Aluminum offers a smooth finish and versatility in design that enables us to create windows and doors with distinctive character and unparalleled beauty. It provides an essential foundation for our quality, baked-on silicone polyester finish, and it enables us to offer a broad array of unique accessory metals to create or recreate the architectural style you need. And beauty doesn't stop on the outside — we give you the design freedom you need to create a look of distinction both inside and out.

## VERSATILITY

Aluminum's strength and versatility allow us to offer beautiful made-to-order design solutions for practically any combination of shapes and styles you can imagine. We offer dozens of exterior accessory metals to match any architectural style, and our colorful 2-, 3- and 4-tone exteriors truly broaden your creative palette.

## DURABILITY

Our aluminum cladding withstands nature's toughest elements — the extrusions slide onto the wood and are secured independently, allowing both wood and aluminum to expand and contract naturally. Our products are engineered to open, close, support, swing or slide reliably day after day.\*



A solid wood core and extruded aluminum cladding give E-Series windows both strength and flexibility in many design applications.



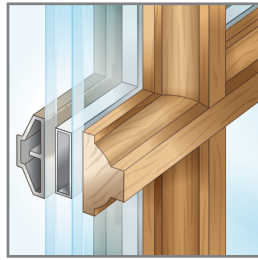
E-Series casement window with Terratone exterior color.

\*Visit [andersenwindows.com/warranty](https://andersenwindows.com/warranty) for details.

# Grille Options

## Full Divided Light (Modern Divided Light)

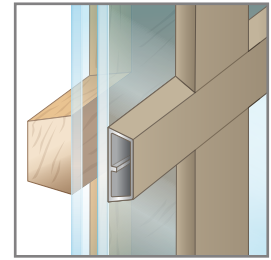
Give any window an authentic look with full divided light grilles that are permanently applied to the interior and exterior of your window with a spacer between the glass. Available in ovolo (colonial) and contemporary profiles.



SHOWN WITH CHAMFER EXTERIOR GRILLE AND OVOLO INTERIOR GRILLE PROFILES

## Simulated Divided Light (Classic Divided Light)

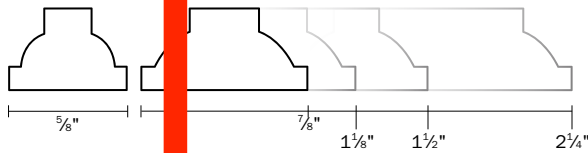
An economical solution with traditional beauty, our Simulated Divided Light features fixed exterior and interior grilles without an internal spacer. Available in ovolo and contemporary profiles.



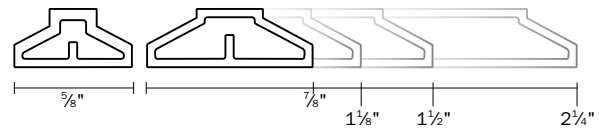
SHOWN WITH CONTEMPORARY EXTERIOR AND INTERIOR GRILLE PROFILES

### Full & Simulated Divided Light Grille Profiles and Widths - Wood & Aluminum

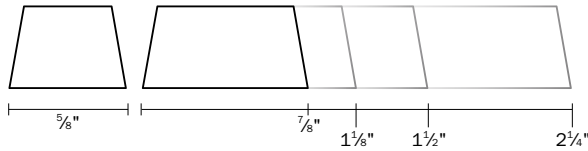
#### Wood (interior) - Ovolo (Colonial) Profile



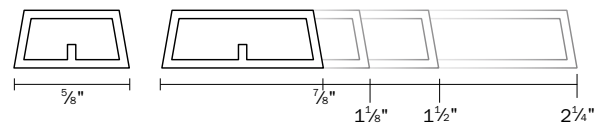
#### Aluminum (exterior) - Chamfer Profile



#### Wood (interior) - Contemporary Profile

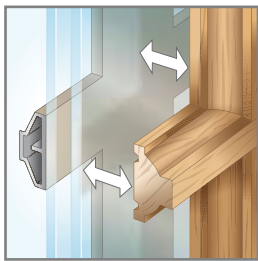


#### Aluminum (exterior) - Contemporary Profile



## Removable Interior Wood Grilles

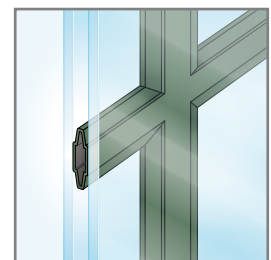
Our removable wood grilles are installed on the interior surface. They are available with an optional surround and an optional permanently applied exterior grille. Available in ovolo and contemporary profiles.



SHOWN WITH OVOLO PROFILE AND OPTIONAL PERMANENTLY APPLIED EXTERIOR GRILLE WITH CHAMFER PROFILE

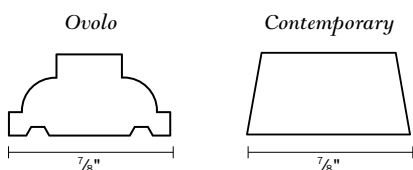
## Finelight™ Grilles-Between-the-Glass

Aluminum grilles conveniently placed between two panes of glass make the glass easy to clean inside and out.



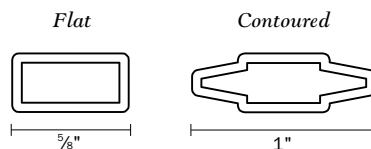
SHOWN WITH 1" CONTOURED PROFILE

### Removable Interior Wood Grille Profiles and Widths



5/8" Color Options	1" Color Options
<ul style="list-style-type: none"> <li><span style="display: inline-block; width: 10px; height: 10px; background-color: white; border: 1px solid black; margin-right: 5px;"></span> COLONY WHITE</li> <li><span style="display: inline-block; width: 10px; height: 10px; background-color: #8B4513; border: 1px solid black; margin-right: 5px;"></span> SIERRA BRONZE</li> <li><span style="display: inline-block; width: 10px; height: 10px; background-color: #D2B48C; border: 1px solid black; margin-right: 5px;"></span> PEBBLE TAN</li> <li><span style="display: inline-block; width: 10px; height: 10px; background-color: #006400; border: 1px solid black; margin-right: 5px;"></span> FOREST GREEN</li> </ul>	<p>Choose from our broad palette of 50 colors or select from the following 2-tone paint combinations</p> <ul style="list-style-type: none"> <li><span style="display: inline-block; width: 10px; height: 10px; background: linear-gradient(to top right, white 49%, #8B4513 49% 51%, #8B4513 51%); border: 1px solid black; margin-right: 5px;"></span> COLONY WHITE/SIERRA BRONZE</li> <li><span style="display: inline-block; width: 10px; height: 10px; background: linear-gradient(to top right, white 49%, #D2B48C 49% 51%, #D2B48C 51%); border: 1px solid black; margin-right: 5px;"></span> COLONY WHITE/PEBBLE TAN</li> <li><span style="display: inline-block; width: 10px; height: 10px; background: linear-gradient(to top right, white 49%, #006400 49% 51%, #006400 51%); border: 1px solid black; margin-right: 5px;"></span> COLONY WHITE/FOREST GREEN</li> </ul>

### Finelight Grille Profiles and Widths



Explore Features | Need Help? | Call 1-866-333-3551 or Text 78465



You're shopping **Livonia**   
 **OPEN** until 10 pm

Delivering **48150**



Hello, **Cheryl**



Cart

You're shopping **Livonia**   
 **OPEN** until 10 pm

Delivering to **48150**

[Home](#) / [Doors & Windows](#) / [Garage Doors](#)

Internet #204598512 Model #GR1SP\_MO\_SOL

UPC Code #092134028562

Clopay  
Gallery Collection 16 ft. x 7 ft. 6.5 R-Value  
Insulated Solid Ultra-Grain Medium Garage Door

★★★★★ (57) [Questions & Answers \(124\)](#)

**\$2631<sup>00</sup>**

Garage Door Color: **Ultra Grain Medium**



Garage Door Size: **16 ft x 7 ft**

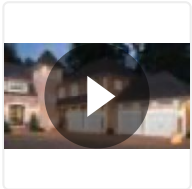
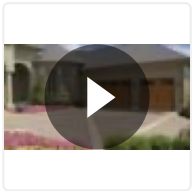


Insulation R-Value: **6.5**






Delivering to: **48150** | [Change](#)





Hover Image to Zoom

 <p><b>Ship to Store</b> Not sold in stores</p>	 <p><b>Ship to Home</b> Expect it <b>Apr 14 - Apr 19</b> Standard Delivery</p>	 <p><b>Scheduled Delivery</b> Not available for this item</p>
--	---	--

Live Chat

Feedback

500 available for delivery to 48150



### Have Questions? We're Here to Help.

Speak to a Virtual Associate about Doors or Windows today. Available from 9 am - 9 pm EST.

Request Appointment

Or call 1-833-HD-APRON (1-833-432-7766)

What to Expect

- 1 +

Add to Cart

Add to List

Add to Quote

Speak to an **EXPERT** about Doors &



### Have More Questions?

Speak to a Door and Window expert. Available daily from 9 am - 8 pm EST.

## Windows

Complimentary Design  
Purchase and installation  
Options

mva man icon

[Get Started](#)

Or call [1-833-432-7766](tel:1-833-432-7766)

## Product Details



### DESIGN, VISUALIZE, & ORDER YOUR CUSTOM GARAGE DOOR

Our local, expert installation team will make sure your garage door project runs smoothly from start to finish.

[Customize your garage door with our Clopay Design Tool >](#)

Add strength, security and style to your home with a Clopay Garage Door. The 3-layer steel construction features polystyrene insulation for added energy efficiency and quiet operation. Decorative panel edging and natural embossed wood grain texture improve appearance close-up and from the curb. This door also features Clopay ultra-grain, a painted steel surface simulating a real stained door without the hassles of staining and the ongoing maintenance of wood. The price includes the door and components only. Installation is NOT included.

## Additional Resources

[From the Manufacturer](#)

[Installation, Service & Rentals](#)

[DIY Projects & Ideas](#)

## Specifications

Dimensions: H 84 in, W 192 in, D 1.38 in



## Dimensions

<b>Garage Door Size</b>	16 ft x 7 ft
<b>Product Depth (in.)</b>	1.38 in
<b>Product Height (in.)</b>	84 in
<b>Product Width (in.)</b>	192 in

## Details

<b>Color Family</b>	Brown
<b>Door Configuration</b>	Double Door
<b>Features</b>	Insulated
<b>Garage Door Collection</b>	Gallery
<b>Garage Door Color</b>	Ultra Grain Medium
<b>Garage Door Style</b>	Carriage House
<b>Included</b>	Instructions
<b>Insulation R-Value</b>	6.5
<b>Material</b>	Steel
<b>Product Type</b>	Without Windows
<b>Product Weight (lb.)</b>	203 lb
<b>Returnable</b>	90-Day
<b>WindCode Rating</b>	No WindCode Rating

## Warranty / Certifications

## Manufacturer Warranty

Paint System - Lifetime, Windows - 10 yrs.,  
Sections/Delamination - 5 yrs., Hardware/Springs  
-3 yrs.

[How can we improve our product information? Provide feedback.](#)

## Questions & Answers

124 Questions



## HardiePlank® Lap Siding Product Description

HardiePlank® lap siding is factory-primed fiber-cement lap siding available in a variety of styles and textures. Please see your local James Hardie® product dealer for product availability. HardiePlank lap siding comes in 12 ft. lengths. Nominal widths from 5 1/4 in to 12 in. create a range of exposures from 4 in to 10 3/4 in

HardiePlank lap siding is also available with ColorPlus® Technology as one of James Hardie's prefinished products. ColorPlus® Technology is a factory applied, oven-baked finish available on a variety of James Hardie siding and trim products. See your local dealer for details and availability of products, colors, and accessories.

The HZ5® product line is right at home in climates with freezing temperatures, seasonal temperature variations, snow and ice. HZ5® boards are the result of our generational evolution of our time-tested products. We've evolved our substrate composition to be specifically designed to perform in conditions found in these climates. To ensure that its beauty matches its durability, we've engineered the surface for higher performance, giving it superior paint adhesion and moisture resistance. In addition, we've added a drip edge to the HardiePlank® HZ5® lap siding product to provide improved water management in conditions specific to HZ5® climates.



Select Cedarmill®



Smooth



Beaded Cedarmill®



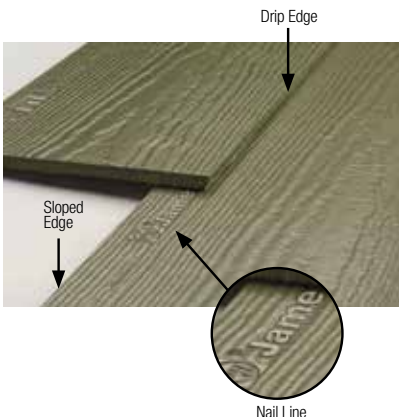
Beaded Smooth



Custom Colonial Roughsawn®



Custom Colonial Smooth®

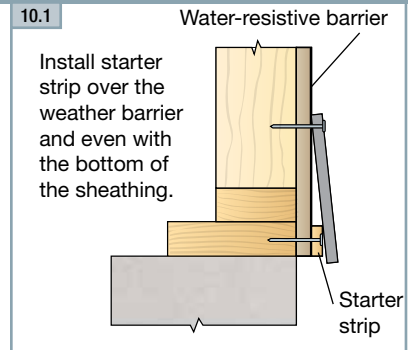


# Installation of HardiePlank® Lap Siding

## INSTALL A STARTER STRIP

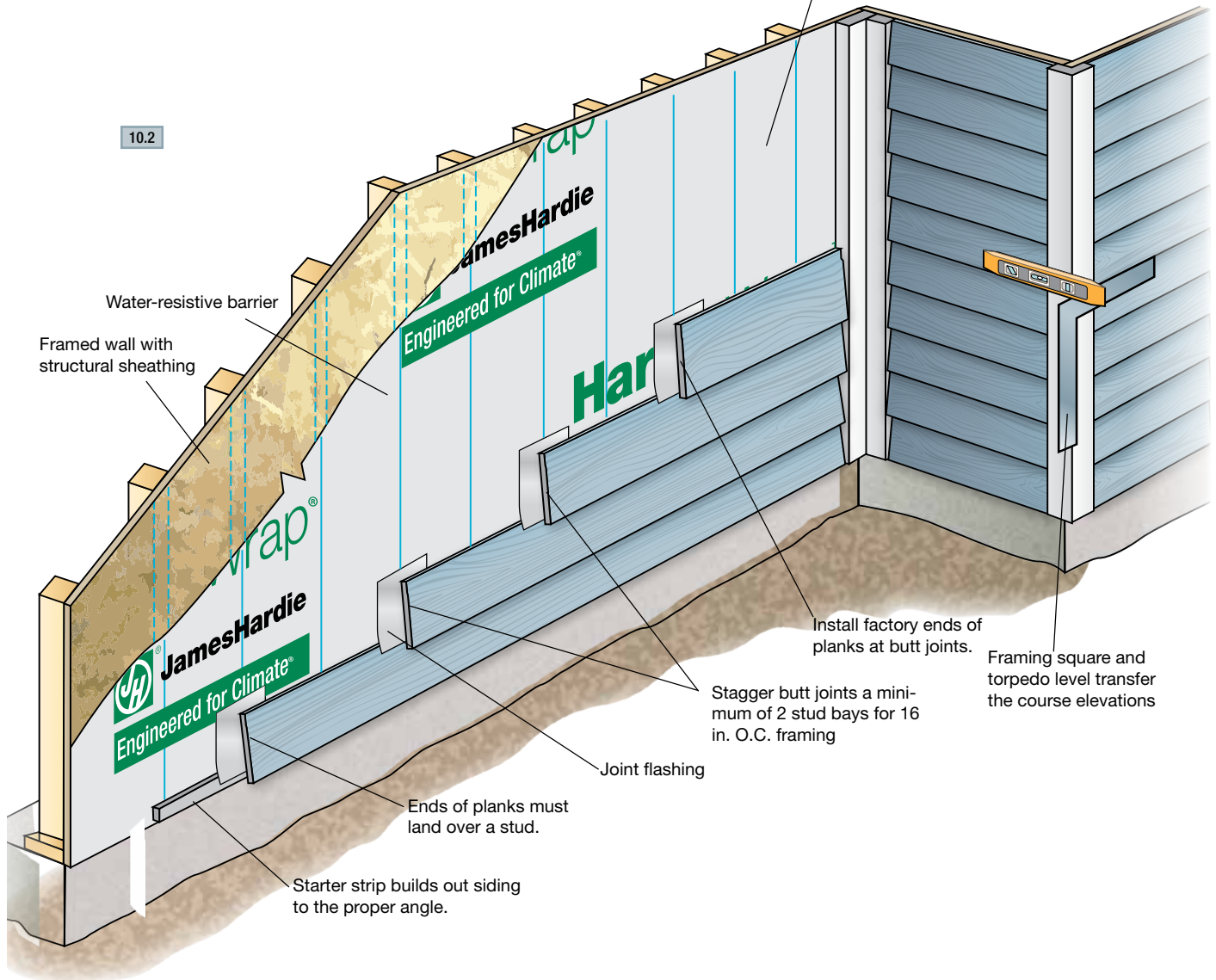
HardiePlank® lap siding requires a starter strip beneath the first course to set it on the proper angle and to create a proper drip edge at the bottom of the siding. Starter strips are easily made by ripping 1 ¼ in. pieces of HardiePlank siding from full or partial planks.

The bottom of the starter strip should be installed even with the bottom of the mudsill or the bottom edge of the sheathing. The strip must be installed over the water-resistant barrier, but occasional gaps should be left in the starter strip to allow any accumulated moisture behind the siding to drain away safely.



## OVERVIEW OF HARDIEPLANK LAP SIDING

**TIP:** For accurate fastening, snap vertical chalk lines on the water-resistant barrier at the center of every stud location.

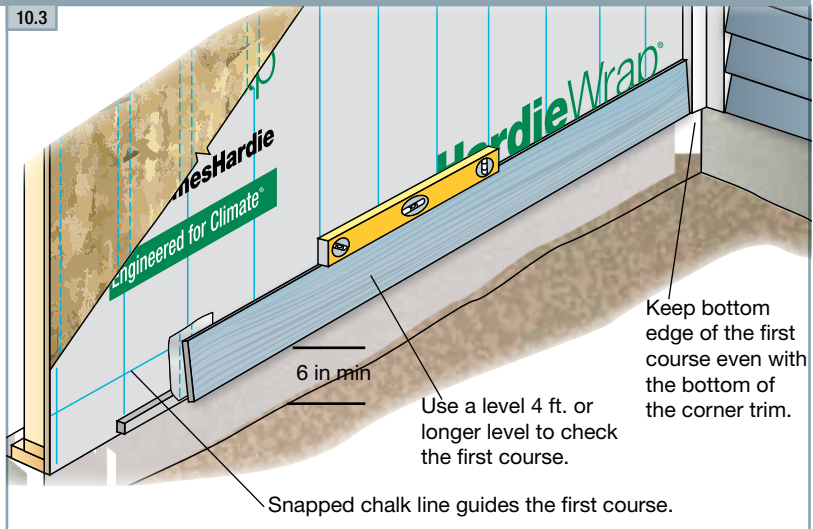


## INSTALLING THE PLANKS

The first course of HardiePlank® siding is critical to the proper installation of the plank on the rest of the building. The first course should start at the lowest point of the house and within required clearances. Special attention should be made to ensure that it's straight and level. Attention should also be paid to staggering any butt joints in the planks so that the installation is attractive while making efficient use of material.

1. Use a level (4 ft. or longer) or chalked level line to be sure that the first course is level. As installation proceeds up the wall, periodically check the level and straightness of the courses. When correcting for flatness over products such as exterior insulation, use drywall shims. It is good practice to snap a chalk line every 3 to 5 courses to keep the planks straight and level.
2. Position the bottom edge of the first course of siding a minimum  $\frac{1}{4}$  in below the edge of the starter strip (maintain required clearances) and secure.
3. Run the siding to the HardieTrim® board leaving a  $\frac{1}{8}$  in. gap between the siding and trim.

The bottom of the siding should be kept even with the bottom of the trim, or if desired, the trim may extend below the bottom of the siding. But the siding should never hang below the trim. **\*When installing the first course make sure ground clearances are in accordance with James Hardie requirements and those of local codes.**

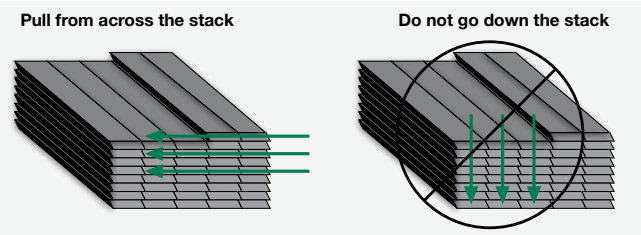


## PLANK ALIGNMENT AT CORNERS

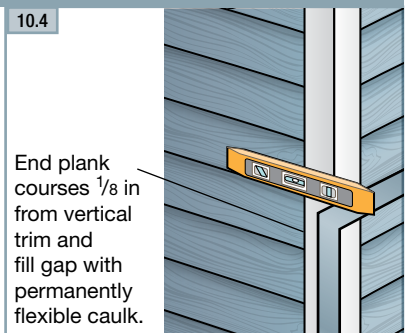
For the best looking installation, make sure that the heights of the plank courses match on both sides of a corner. Use a framing square, speed square or a level to match up the plank heights. Check every few courses to make sure proper heights are being maintained.

## HANDLING

**IMPORTANT:** To prevent damage to the drip edge, extra care should be taken when removing planks from the pallet, while handling, and when installing with a lap gauge. Planks are interlocked together on the pallet, therefore they should be removed from the pallet horizontally (side to side) to allow planks to unlock themselves from one another.



**TIP:** When taking planks from the pallet installation, avoid repeating the texture pattern by working across the pallet. Two to four planks can be removed from a stack at one time. But then material should be taken from adjacent stacks, again working across the pallet. Texture repeat is typically a concern on large walls with few breaks such as windows or doors.



# Installation of HardiePlank® Lap Siding (cont.)

## BLIND NAILING (nailing through top of plank)

Blind nailing is recommended for installing any type of HardiePlank® lap siding including ColorPlus® siding. With blind nailing, each course covers the fasteners on the course below, which provides a better looking installation.

For blind nailing HardiePlank lap siding, James Hardie recommends driving fasteners 1 in. from the top edge of the plank. Additionally fasteners should be

placed no closer than 3/8 in from the ends of the plank.

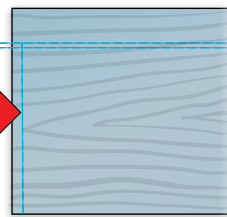
HardiePlank® HZ5® Lap Siding is manufactured with a nail line that should be used as a guide for proper nail placement when blind nailing. This nail line should not be used as a lap line.

Avoid placing fasteners near the top edge of the plank. This practice, called “high nailing”, may lead to loose planks, unwanted gaps or rattling. **Pin-backed corners may be done for aesthetic purposes only. Finish nails are recommended for pin-backs. Headed siding nails are allowed. Place pin-backs no closer than 1 in. from plank ends & 3/4 in. from plank edge into min. 3/8 in. wood structural panel. Pin-backs are not a substitute for blind or face nailing**

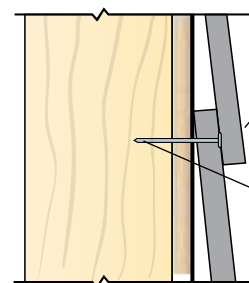
### 10.5 Blind nailing measurements

Nails for blind nailing shall be between 3/4 in and 1 in. from the top of the board.

Keep nails 3/8 in from ends of boards.



### 10.6 Blind nailing



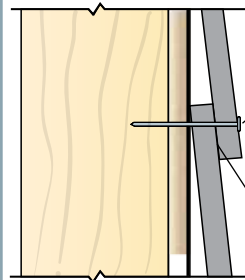
Fasteners are hidden by the course above.

Nails are driven through the sheathing into the studs.

## FACE NAILING (nailing through the overlap at the bottom of the plank)

Although blind nailing is recommended by James Hardie, face nailing may be required for certain installations including: installations in high wind areas, fastening into OSB or equivalent sheathing without penetrating a stud, or when dictated by specific building codes. Refer to Appendix D for related code matters.

### 10.7 Face nailing



Exposed fasteners are driven through the face of the boards.

Drive fasteners only where planks overlap

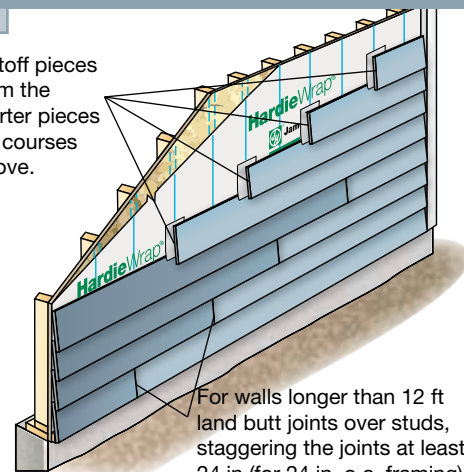
## STAGGERING THE BUTT JOINTS

For walls longer than 12 ft, it is necessary to butt joint additional lengths of HardiePlank siding. These butt joints should be staggered to avoid noticeable patterns, which is determined by the placement of the first course. Butt joints between consecutive courses should be spaced apart by at least two stud bays for 16 in. o.c. framing or one bay for 24 in. o.c. framing.

While random placement of the planks is usually the most aesthetically pleasing, a progressive stagger pattern can make the job easier and faster without the pattern becoming too noticeable. With this strategy, the cut off piece for one course becomes the starter piece for a course above, making efficient use of materials and ensuring that all butt joints land on studs. The pattern can be modified for different stud placement.

### 10.8

Cutoff pieces form the starter pieces for courses above.



For walls longer than 12 ft land butt joints over studs, staggering the joints at least 24 in (for 24 in. o.c. framing) or 32 in. (two stud bays for 16 in. o.c. framing).



## JOINT FLASHING

One or more of the following joint treatment options are required by code (as referenced 2009 IRC R703.10.2)

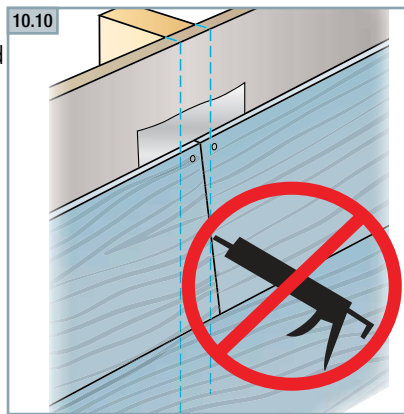
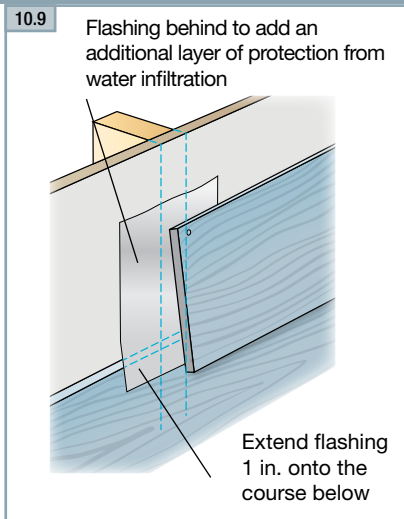
- A. Joint Flashing (James Hardie recommended)
- B. Caulking\* (Caulking is not recommended for ColorPlus for aesthetic reasons as the Caulking and ColorPlus will weather differently. For the same reason, do not caulk nail heads on ColorPlus products.)
- C. "H" jointer cover

Flashing behind butt joints provides an extra level of protection against the entry of water at the joint. James Hardie recommends 6 in. wide flashing that overlaps the course below by 1 in. Some local building codes may require different size flashing.

Joint-flashing material must be durable, waterproof materials that do not react with cement products. Examples of suitable material include finished coil stock and code compliant water-resistive barriers. Other products may also be suitable.

**TIP:** Joint flashing can be quickly and easily made by cutting a 6 in. wide section off a roll of housewrap. Tape the roll tightly at the cut mark and cut the section off using a miter saw with a carbide blade. Individual sheets then can be cut to length with a utility knife.

**TIP:** Use light-colored joint flashing when using light-colored ColorPlus lap siding or other siding with a light-colored finish. Dark-color joint flashings should be used on siding with dark finishes.

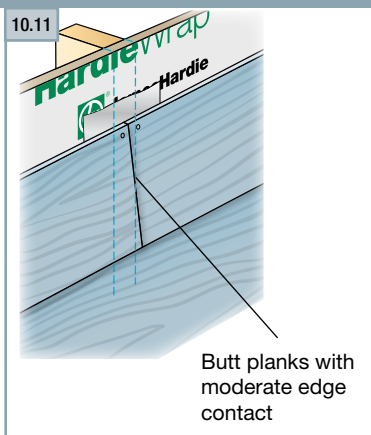


Caulking at HardiePlank lap siding butt joints is not recommended for ColorPlus for aesthetic reasons as the caulking and ColorPlus will weather differently. For the same reason, do not caulk exposed nail heads. Refer to the ColorPlus touch-up section for details

## JOINT PLACEMENT AND TREATMENT

Butt joints in HardiePlank lap siding should always land on a stud. Butt joints between studs are not recommended and should be avoided. Whenever possible, factory-finished ends should be used at butt joints.

Place cut ends where the siding meets a corner, door, window trim, or other break in the wall where the joint is to be caulked. If cut ends are used in a butt joint between planks, James Hardie requires sealing cut ends for all products. For ColorPlus products, use the color-matched edge coater to seal the cut end.



**COLORPLUS® TIP:** When installing HardiePlank lap siding with ColorPlus Technology, position the plank in the immediate area where the plank is to be fastened. Do not place the plank on the course below and slide into position. Doing so may scuff or scratch the ColorPlus finish on the installed piece.

# Installation of HardiePlank® Lap Siding (cont.)

## CONTINUING THE INSTALLATION

Once the initial course of HardiePlank® siding is fastened to the wall, continue installing successive courses with full 12 ft. pieces (follow the stagger pattern for longer walls), or until a window, door or other opening interrupts the course (fig 10.12). Notch planks as needed to fit around windows and doors. Again, be sure to seal all cut edges. Avoid placing butt joints directly above or below windows or above doors. Separate the joint from the opening by at least one course of siding.

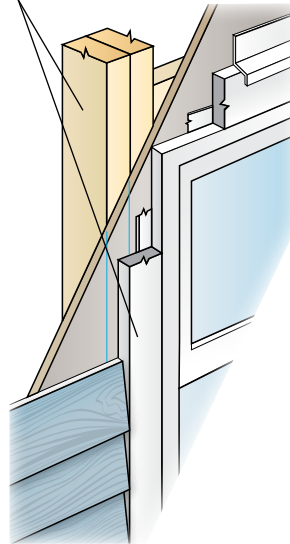
Where butt joints land on a stud, make sure there is enough stud space for plank on both sides of the joint to land properly. Optimally both sides of a butt joint should land in the middle of a stud with 3/4 in landing space for each side. The minimum stud space for a plank to land is 3/8 in

Pay special attention to window, doors, and corners that have been trimmed before the siding goes on. Vertical trim boards may cover the king studs beside windows or doors, or they may cover up corner studs leaving no room for nailing the siding. In these places add extra studs as needed.

If corners are trimmed with HardieTrim® 5/4, 4/4 boards, it may be necessary to measure and cut the first pieces of siding to make sure the butt joints land on studs.

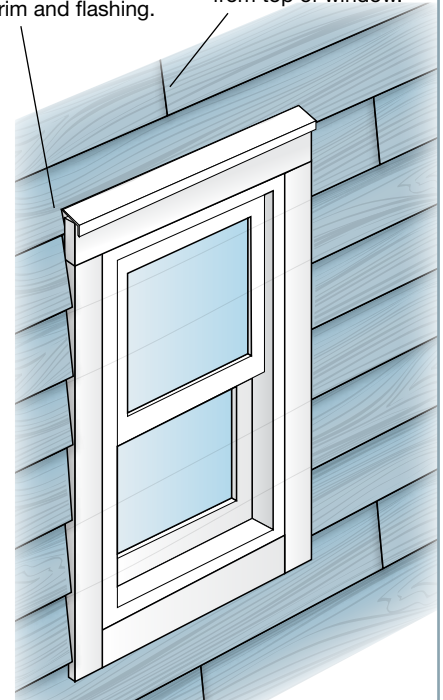
### 10.12 Planking around windows

Add an extra stud if necessary for nailing the ends of the planks.



Notch plank around window trim and flashing.

Keep butt joints more than one course away from top of window.



**COLORPLUS TIP:** HardiePlank lap siding with ColorPlus Technology is shipped with a protective laminate slip sheet, which should be left in place during cutting and fastening to reduce marring and scratching. The sheet should be removed immediately after each plank is installed.



## INSTALLING HARDIEPLANK® SIDING ON GABLE WALLS

Siding gable walls can be challenging, and some of the keys to siding gable walls efficiently are determining the angle or pitch of the roof, properly staging materials, and ensuring that the plank lengths are measured accurately.

To estimate the amount of siding needed to complete a gable end, use the estimating tools located in Appendix C.

Stage enough material on the pump jacks or scaffolding to complete the gable end, but take care not to overload the staging. When possible, a cut table should be located on the pump jacks or scaffolding, which frees up crew members to work on other walls.

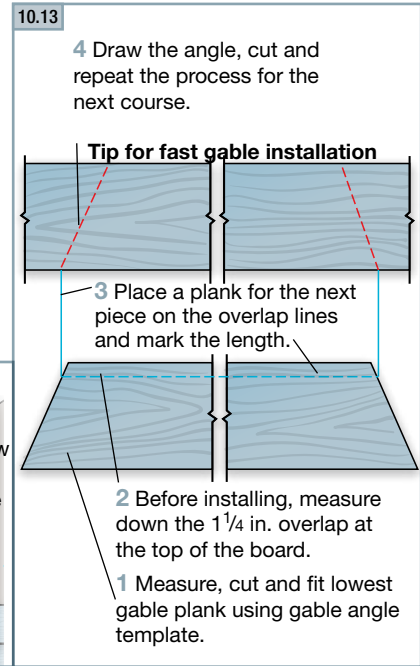
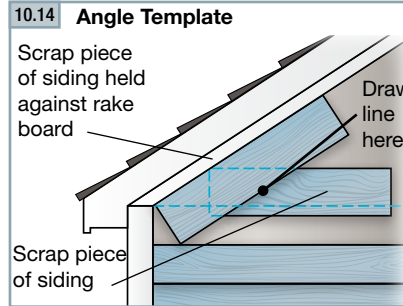
### To cut planks for the gable:

1. Tack up a small scrap piece of siding where the first gable course is going.
2. Hold a second small piece of siding against the eave or rake board.
3. Trace the angle onto the scrap.
4. Cut that line and label the scrap as the template for the gable angle. The template can then be used to transfer the angle onto the larger pieces for cutting and installation.
5. Periodically check the angle as you progress up the wall.

### The quickest way to measure and cut consecutive courses of siding for a gable is to work off the previous piece.

1. Cut and fit the lowest course of siding.
2. Before installing, lay it flat and measure down 1 1/4 in. from the top edge of the plank for the course overlap. Make a mark on both ends.
3. Set a piece of uncut siding on top of the first piece, aligning the bottom edge with the overlap marks. Transfer the length directly to the uncut piece.
4. Draw the gable angle with the template, cut the angle and then repeat the process for the next course.

**TIP:** Stainless steel fasteners are recommended when installing James Hardie® products.



### HARDIEPLANK® SIDING FASTENER SPECIFICATIONS

The Fastener Specifications table shows fastener options for a variety of different nailing substrates. Please refer to the applicable ESR report online (see back page) to determine which fastener meets your wind load design criteria.

Fastener Substrate		Approved Fastener	Fastener Type
wood studs	blind nail	16 in o.c.	②  6D common .113 in x .267 in x 2 in
		24 in o.c.	③ ⑨  6D siding nail .093 in x .222 in. x 2 in
	face nail	16 in o.c.	② ⑤  roofing nail No 11ga 1.25 in long
		24 in o.c.	② ⑤  screws Ribbed Bugle-Head No. 8 .323 in x 1.625 in
steel studs*	blind nail	16 in o.c.	⑧ ⑬  ET&F Ribbed Wafer-Head No. 8 (.375 in x 1.25 in)
		24 in o.c.	⑧ ⑬  ET&F [AKN-100] .100 in x .25 in x 1.5 in
	face nail	16 in o.c.	⑦ ⑫  masonry nail [AGS-100] .100 in x .313 in x 1.5 in
		24 in o.c.	⑦ ⑫  masonry nail [ASTM C-90] ASM-144-125 (P/C) .30 in x .14 in x 1.25 in
Direct to Masonry		⑭  8D common .113 in x .260 in x 2.375 in	
7/16 in OSB or equivalent (face nailed)		④  roofing nail No 11ga 1.75 in long	
			④  4D siding nail .091 in. x .221 in. x 1.5 in

\*When blind fastening 9.5 in or wider product onto steel studs, use screws.

● indicates recommended fasteners



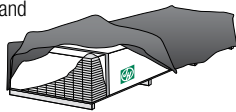
# HardiePlank® Lap Siding

EFFECTIVE SEPTEMBER 2019

**IMPORTANT: FAILURE TO FOLLOW JAMES HARDIE WRITTEN INSTALLATION INSTRUCTIONS AND COMPLY WITH APPLICABLE BUILDING CODES MAY VIOLATE LOCAL LAWS, AFFECT BUILDING ENVELOPE PERFORMANCE AND MAY AFFECT WARRANTY COVERAGE. FAILURE TO COMPLY WITH ALL HEALTH AND SAFETY REGULATIONS WHEN CUTTING AND INSTALLING THIS PRODUCT MAY RESULT IN PERSONAL INJURY. BEFORE INSTALLATION, CONFIRM YOU ARE USING THE CORRECT HARDIEZONE® PRODUCT INSTRUCTIONS BY VISITING HARDIEZONE.COM OR CALL 1-866-942-7343 (866-9-HARDIE)**

## STORAGE & HANDLING:

Store flat and keep dry and covered prior to installation. Installing siding wet or saturated may result in shrinkage at butt joints. Carry planks on edge. Protect edges and corners from breakage. James Hardie is not responsible for damage caused by improper storage and handling of the product.



## ⚠ CUTTING INSTRUCTIONS

### OUTDOORS

- Position cutting station so that airflow blows dust away from the user and others near the cutting area.
- Cut using one of the following methods:
  - Best:** Circular saw equipped with a HardieBlade® saw blade and attached vacuum dust collection system. Shears (manual, pneumatic or electric) may also be used, not recommended for products thicker than 7/16 in.
  - Better:** Circular saw equipped with a dust collection feature (e.g. Roan® saw) and a HardieBlade saw blade.
  - Good:** Circular saw equipped with a HardieBlade saw blade.

### INDOORS

DO NOT grind or cut with a power saw indoors. Cut using shears (manual, pneumatic or electric) or the score and snap method, not recommended for products thicker than 7/16 in.

- DO NOT dry sweep dust; use wet dust suppression or vacuum to collect dust.
- For maximum dust reduction, James Hardie recommends using the "Best" cutting practices. Always follow the equipment manufacturer's instructions for proper operation.
- For best performance when cutting with a circular saw, James Hardie recommends using HardieBlade® saw blades.
- Go to jameshardiepros.com for additional cutting and dust control recommendations.

**IMPORTANT:** The Occupational Safety and Health Administration (OSHA) regulates workplace exposure to silica dust. For construction sites, OSHA has deemed that cutting fiber cement with a circular saw having a blade diameter less than 8 inches and connected to a commercially available dust collection system per manufacturer's instructions results in exposures below the OSHA Permissible Exposure Limit (PEL) for respirable crystalline silica, without the need for additional respiratory protection.

If you are unsure about how to comply with OSHA silica dust regulations, consult a qualified industrial hygienist or safety professional, or contact your James Hardie technical sales representative for assistance. James Hardie makes no representation or warranty that adopting a particular cutting practice will assure your compliance with OSHA rules or other applicable laws and safety requirements.

**IMPORTANT:** To prevent damage to the drip edge, extra care should be taken when removing planks from the pallet, while handling, and when installing with a lap gauge. Please see additional handling requirements on page 4.

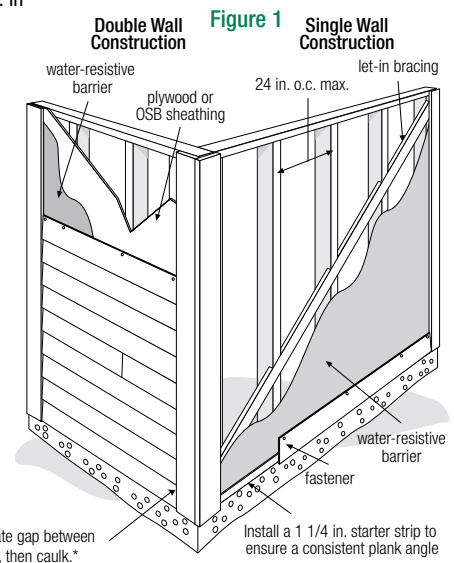
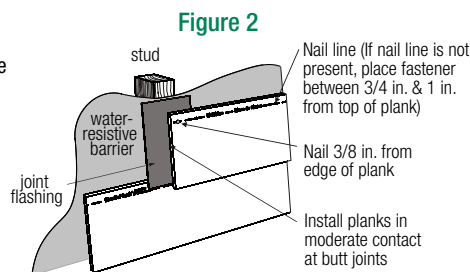
## GENERAL REQUIREMENTS:

- HardiePlank® lap siding can be installed over braced wood or steel studs, 20 gauge (33 mils) minimum to 16 gauge (54 mils) maximum, spaced a maximum of 24 in o.c. or directly to minimum 7/16 in thick OSB sheathing. See General Fastening Requirements. Irregularities in framing and sheathing can mirror through the finished application. Correct irregularities before installing siding.
- Information on installing James Hardie products over non-nailable substrates (ex: gypsum, foam, etc.) can be located in JH Tech Bulletin 19 at [www.jamehardie.com](http://www.jamehardie.com)
- A water-resistive barrier is required in accordance with local building code requirements. The water-resistive barrier must be appropriately installed with penetration and junction flashing in accordance with local building code requirements. James Hardie will assume no responsibility for water infiltration. James Hardie does manufacture HardieWrap® Weather Barrier, a non-woven non-perforated housewrap<sup>1</sup>, which complies with building code requirements.
- Adjacent finished grade must slope away from the building in accordance with local building codes - typically a minimum of 6 in. in the first 10 ft..
- Do not use HardiePlank lap siding in Fascia or Trim applications.
- Do not install James Hardie products, such that they may remain in contact with standing water.
- HardiePlank lap siding may be installed on flat vertical wall applications only.
- For larger projects, including commercial and multi-family projects, where the span of the wall is significant in length, the designer and/or architect should take into consideration the coefficient of thermal expansion and moisture movement of the product in their design. These values can be found in the Technical Bulletin "Expansion Characteristics of James Hardie® Siding Products" at [www.jameshardie.com](http://www.jameshardie.com).
- James Hardie Building Products provides installation /wind load information for buildings with a maximum mean roof height of 85 feet. For information on installations above 60 feet, please contact JH technical support.

## INSTALLATION: JOINT TREATMENT

One or more of the following joint treatment options are required by code (as referenced 2009 IRC R703.10.2)

- Joint Flashing (James Hardie recommended)
- Caulking\* (Caulking is not recommended for ColorPlus for aesthetic reasons as the Caulking and ColorPlus will weather differently. For the same reason, do not caulk nail heads on ColorPlus products.)
- "H" jointer cover



Note: Field painting over caulking may produce a sheen difference when compared to the field painted PrimePlus. \*Refer to Caulking section in these instructions.  
<sup>1</sup>For additional information on HardieWrap® Weather Barrier, consult James Hardie at 1-866-4Hardie or [www.hardiewrap.com](http://www.hardiewrap.com)



SELECT CEDARMILL® | SMOOTH | BEADED CEDARMILL® | BEADED SMOOTH



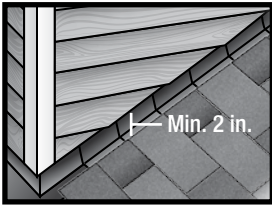
Visit [jameshardiepros.com](http://jameshardiepros.com) for the most recent version.

HS11117 P1/4 09/19

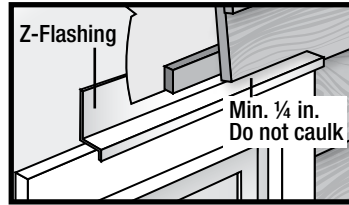


## CLEARANCE AND FLASHING REQUIREMENTS

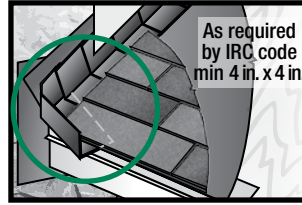
**Figure 3**  
**Roof to Wall**



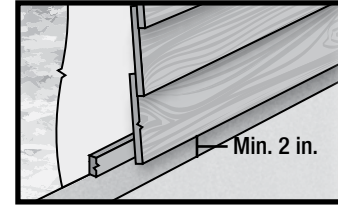
**Figure 4**  
**Horizontal Flashing**



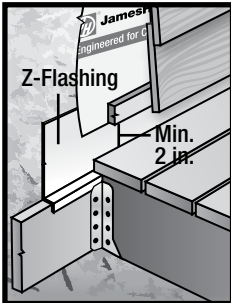
**Figure 5**  
**Kickout Flashing**



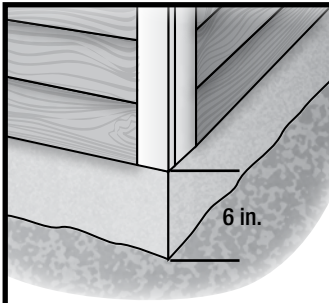
**Figure 6**  
**Slabs, Path, Steps to Siding**



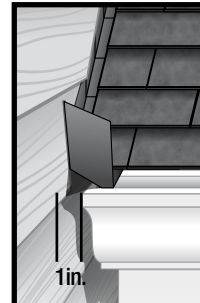
**Figure 7**  
**Deck to Wall**



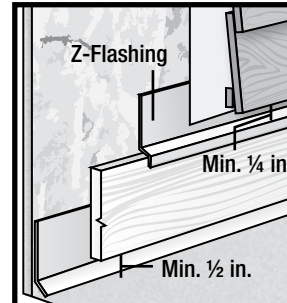
**Figure 8**  
**Ground to Siding**



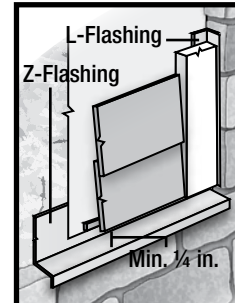
**Figure 9**  
**Gutter to Siding**



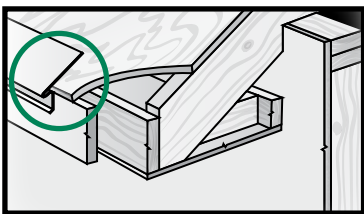
**Figure 10**  
**Sheltered Areas**



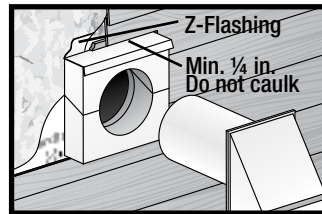
**Figure 11**  
**Mortar/Masonry**



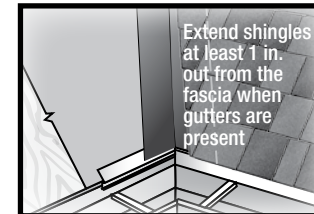
**Figure 12**  
**Drip Edge**



**Figure 13**  
**Block Penetration**



**Figure 14**  
**Valley/Shingle Extension**



## FASTENER REQUIREMENTS\*

Refer to the applicable ESR report online to determine which fastener meets your wind load design criteria.

Blind Nailing is the preferred method of installation for HardiePlank® lap siding products. Face nailing should only be used where required by code for high wind areas and must not be used in conjunction with Blind nailing (Please see JH Tech bulletin 17 for exemption when doing a repair).

### BLIND NAILING

#### Nails - Wood Framing

- Siding nail (0.09 in. shank x 0.221 in. HD x 2 in. long)
- 11ga. roofing nail (0.121 in. shank x 0.371 in. HD x 1.25 in. long)

#### Screws - Steel Framing

- Ribbed Wafer-head or equivalent (No. 8 x 1 1/4 in. long x 0.375 in. HD) Screws must penetrate 3 threads into metal framing.

#### Nails - Steel Framing

- ET & F Panelfast® nails or equivalent (0.10 in. shank x 0.313 in. HD x 1-1/2 in. long) Nails must penetrate minimum 1/4 in. into metal framing.

#### OSB minimum 7/16 in.

- Siding nail (0.09 in. shank x 0.215 in. HD x 1-1/2 in. long)
- Ribbed Wafer-head or equivalent (No. 8 x 1 5/8 in. long x 0.375 in. HD).

### FACE NAILING

#### Nails - Wood Framing

- 6d (0.113 in. shank x 0.267 in. HD x 2 in. long)
- Siding nail (0.09" shank x 0.221" HD x 2" long)

#### Screws - Steel Framing

- Ribbed Bugle-head or equivalent (No. 8-18 x 1-5/8 in. long x 0.323 in. HD) Screws must penetrate 3 threads into metal framing.

#### Nails - Steel Framing

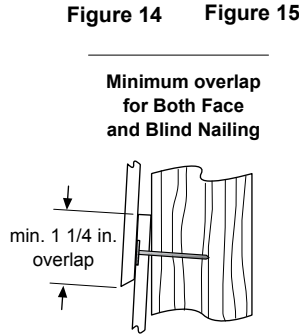
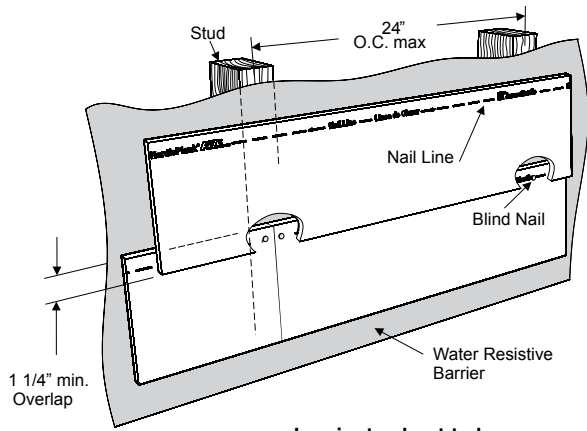
- ET & F pin or equivalent (0.10 in. shank x 0.25 in. HD x 1-1/2 in. long) Nails must penetrate minimum 1/4 in. into metal framing.

#### OSB minimum 7/16 in.

- Siding nail (0.09 in. shank x 0.221 in. HD x 1-1/2 in. long)

\*Also see General Fastening Requirements; and when considering alternative fastening options refer to James Hardie's Technical Bulletin USTB 5 - Fastening Tips for HardiePlank Lap Siding.

**FASTENER REQUIREMENTS** *continued*



Laminate sheet to be removed immediately after installation of each course for ColorPlus® products.

Pin-backed corners may be done for aesthetic purposes only. Finish nails are recommended for pin-backs. Headed siding nails are allowed. Place pin-backs no closer than 1 in. from plank ends and 3/4 in. from plank edge into min. 3/8 in. wood structural panel. Pin-backs are not a substitute for blind or face nailing.

**GENERAL FASTENING REQUIREMENTS**

Fasteners must be corrosion resistant, galvanized, or stainless steel. Electro-galvanized are acceptable but may exhibit premature corrosion. James Hardie recommends the use of quality, hot-dipped galvanized nails. James Hardie is not responsible for the corrosion resistance of fasteners. Stainless steel fasteners are recommended when installing James Hardie® products near the ocean, large bodies of water, or in very humid climates.

Manufacturers of ACQ and CA preservative-treated wood recommend spacer materials or other physical barriers to prevent direct contact of ACQ or CA preservative-treated wood and aluminum products. Fasteners used to attach HardieTrim Tabs to preservative-treated wood shall be of hot dipped zinc-coated galvanized steel or stainless steel and in accordance to 2009 IRC R317.3 or 2009 IBC 2304.9.5

- Consult applicable product evaluation or listing for correct fasteners type and placement to achieve specified design wind loads.
- NOTE: Published wind loads may not be applicable to all areas where Local Building Codes have specific jurisdiction. Consult James Hardie Technical Services if you are unsure of applicable compliance documentation.
- Drive fasteners perpendicular to siding and framing.
- Fastener heads should fit snug against siding (no air space).
- NOTE: Whenever a structural member is present, HardiePlank should be fastened with even spacing to the structural member. The tables allowing direct to OSB or plywood should only be used when traditional framing is not available.

**CUT EDGE TREATMENT**

Caulk, paint or prime all field cut edges. James Hardie touch-up kits are required to touch-up ColorPlus products.

**CAULKING**

For best results use an Elastomeric Joint Sealant complying with ASTM C920 Grade NS, Class 25 or higher or a Latex Joint Sealant complying with ASTM C834. Caulking/Sealant must be applied in accordance with the caulking/sealant manufacturer's written instructions.

**Note: some caulking manufacturers do not allow "tooling".**

**PAINTING**

DO NOT use stain, oil/alkyd base paint, or powder coating on James Hardie® products. Factory-primed James Hardie products must be painted within 180 days of installation. 100% acrylic topcoats are recommended. Do not paint when wet. For application rates refer to paint manufacturers specifications. Back-rolling is recommended if the siding is sprayed.

**PNEUMATIC FASTENING**

James Hardie products can be hand nailed or fastened with a pneumatic tool. Pneumatic fastening is highly recommended. Set air pressure so that the fastener is driven snug with the surface of the siding. A flush mount attachment on the pneumatic tool is recommended. This will help control the depth the nail is driven. If setting the nail depth proves difficult, choose a setting that under drives the nail. (Drive under driven nails snug with a smooth faced hammer - Does not apply for installation to steel framing).

<p><b>SNUG</b>    <b>FLUSH</b></p>		<p><b>DO NOT</b></p> <p><b>UNDER DRIVE</b>    <b>SLANT</b></p>		<p><b>DO NOT USE</b></p> <p><b>ALUMINUM FASTENERS</b></p>
<p><b>IF, THEN</b></p> <p><b>WOOD FRAME</b>    <b>STEEL FRAME</b></p> <p>HAMMER FLUSH</p> <p>REMOVE &amp; REPLACE</p>		<p><b>IF, THEN ADDITIONAL NAIL</b></p> <p><b>FACE NAIL</b></p> <p>COUNTERSINK &amp; FILL</p>		<p><b>CLIPPED HEAD NAILS</b></p>
				<p><b>STAPLES</b></p>



### COLORPLUS® TECHNOLOGY CAULKING, TOUCH-UP & LAMINATE

- Care should be taken when handling and cutting James Hardie ColorPlus® products. During installation use a wet soft cloth or soft brush to gently wipe off any residue or construction dust left on the product, then rinse with a garden hose.
  - Touch up nicks, scrapes and nail heads using the ColorPlus® Technology touch-up applicator. Touch-up should be used sparingly. If large areas require touch-up, replace the damaged area with new HardiePlank® lap siding with ColorPlus® Technology.
  - Laminate sheet must be removed immediately after installation of each course.
  - Terminate non-factory cut edges into trim where possible, and caulk. Color matched caulks are available from your ColorPlus® product dealer.
  - Treat all other non-factory cut edges using the ColorPlus Technology edge coat, available from your ColorPlus product dealer.
- Note:** James Hardie does not warrant the usage of third party touch-up or paints used as touch-up on James Hardie ColorPlus products.

Problems with appearance or performance arising from use of third party touch-up paints or paints used as touch-up that are not James Hardie touch-up will not be covered under the James Hardie ColorPlus Limited Finish Warranty.

### COVERAGE CHART/ESTIMATING GUIDE

Number of 12 ft. planks, does not include waste

COVERAGE AREA  
LESS  
OPENINGS

SQ (1 SQ = 100 sq.ft.)	HARDIEPLANK® LAP SIDING WIDTH (exposure)	HARDIEPLANK® LAP SIDING WIDTH									
		5 1/4 4	6 1/4 5	7 1/4 6	7 1/2 6 1/4	8 6 3/4	8 1/4 7	9 1/4 8	9 1/2 8 1/4	12 10 3/4	
1		25	20	17	16	15	14	13	13	9	
2		50	40	33	32	30	29	25	25	19	
3		75	60	50	48	44	43	38	38	28	
4		100	80	67	64	59	57	50	50	37	
5		125	100	83	80	74	71	63	63	47	
6		150	120	100	96	89	86	75	75	56	
7		175	140	117	112	104	100	88	88	65	
8		200	160	133	128	119	114	100	100	74	
9		225	180	150	144	133	129	113	113	84	
10		250	200	167	160	148	143	125	125	93	
11		275	220	183	176	163	157	138	138	102	
12		300	240	200	192	178	171	150	150	112	
13		325	260	217	208	193	186	163	163	121	
14		350	280	233	224	207	200	175	175	130	
15		375	300	250	240	222	214	188	188	140	
16		400	320	267	256	237	229	200	200	149	
17		425	340	283	272	252	243	213	213	158	
18		450	360	300	288	267	257	225	225	167	
19		475	380	317	304	281	271	238	238	177	
20		500	400	333	320	296	286	250	250	186	

This coverage chart is meant as a guide. Actual usage is subject to variables such as building design. James Hardie does not assume responsibility for over or under ordering of product.

### PAINTING JAMES HARDIE® SIDING AND TRIM PRODUCTS WITH COLORPLUS® TECHNOLOGY

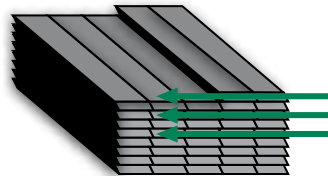
When repainting ColorPlus products, James Hardie recommends the following regarding surface preparation and topcoat application:

- Ensure the surface is clean, dry, and free of any dust, dirt, or mildew
- Repriming is normally not necessary
- 100% acrylic topcoats are recommended
- DO NOT use stain, oil/alkyd base paint, or powder coating on James Hardie® Products.
- Apply finish coat in accordance with paint manufacturers written instructions regarding coverage, application methods, and application temperature
- DO NOT caulk nail heads when using ColorPlus products, refer to the ColorPlus touch-up section

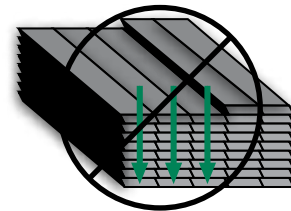
### ADDITIONAL HANDLING REQUIREMENTS

IMPORTANT: To prevent damage to the drip edge, extra care should be taken when removing planks from the pallet, while handling, and when installing with a lap gauge. Planks are interlocked together on the pallet, therefore they should be removed from the pallet horizontally (side to side) to allow planks to unlock themselves from one another.

Pull from across the stack



Do not go down the stack



HS11117 P4/4 09/19

#### SILICA WARNING

**DANGER:** May cause cancer if dust from product is inhaled. Causes damage to lungs and respiratory system through prolonged or repeated inhalation of dust from product. Refer to the current product Safety Data Sheet before use. The hazard associated with fiber cement arises from crystalline silica present in the dust generated by activities such as cutting, machining, drilling, routing, sawing, crushing, or otherwise abrading fiber cement, and when cleaning up, disposing of or moving the dust. When doing any of these activities in a manner that generates dust you must (1) comply with the OSHA standard for silica dust and/or other applicable law, (2) follow James Hardie cutting instructions to reduce or limit the release of dust; (3) warn others in the area to avoid breathing the dust; (4) when using mechanical saw or high speed cutting tools, work outdoors and use dust collection equipment; and (5) if no other dust controls are available, wear a dust mask or respirator that meets NIOSH requirements (e.g. N-95 dust mask). During clean-up, use a well maintained vacuum and filter appropriate for capturing fine (respirable) dust or use wet clean-up methods - never dry sweep.

**WARNING:** This product can expose you to chemicals including respirable crystalline silica, which is known to the State of California to cause cancer. For more information go to [P65Warnings.ca.gov](http://P65Warnings.ca.gov).

**RECOGNITION:** In accordance with ICC-ES Evaluation Report ESR-2290, HardiePlank® lap siding is recognized as a suitable alternate to that specified in the 2006, 2009, 2012 & 2015 International Residential Code for One and Two-Family Dwellings, and the 2006, 2009, 2012 & 2015 International Building Code. HardiePlank lap siding is also recognized for application in the following: City of Los Angeles Research Report No. 24862, State of Florida Product Approval FL#13192, Miami-Dade County Florida NOA No. 17-0406.06, U.S. Dept. of HUD Materials Release 1263f, Texas Department of Insurance Product Evaluation EC-23, City of New York MEA 223-93-M, and California DSA PA-019. These documents should also be consulted for additional information concerning the suitability of this product for specific applications.

★★★★★ (139) Questions & Answers (162)



Hover Image to Zoom

Common Door Size (WxH) in.: **72 x 80**

60 x 80

**72 x 80**

Door Handing: **Right-Hand/Inswing**

Left-Hand/Inswing

**Right-Hand/Inswing**

Live Chat

Feedback

Delivering to: **48150** | [Change](#)

**Ship to Store**  
 Pickup **Dec 28 - Jan 2**  
**FREE**

**Ship to Home**  
 Get it by **Fri, Jan 6**  
 Standard Delivery

**Scheduled Delivery**  
 Not available for this item

We'll send up to **45** to **Livonia** for **free pickup**  
[Change Store](#)



**Have Questions? We're Here to Help.**



# Trex Signature® Railing

A customized complement to modern decking. Effortless style, exceptional strength—that's Trex Signature Railing.



**Durable & Design-  
Forward**

**High Performance**

Imagine top-tier durability

**Customized, Effortless Style**

Every deck deserves a signature.

Transform everyday spaces into an escape with Trex. Low-maintenance railings from the Trex Signature add a touch of modern sophistication to any view.

and the refined beauty of negative space. Our four contemporary Trex Signature options feature powder-coated aluminum rails that resist fading and corrosion, backed by our 25-year Limited Warranty.

Through the use of aluminum, mesh, rod, or glass panels, you can add a contemporary edge to any outdoor space. Got a great view? Consider curving your rails to mimic the sweeps of the garden below. And entertainers, take note: wide, beverage-ready cocktail railing may just be the ideal choice for you.

## Trex Signature Railing

Signature Railing is available in a variety of colors and configurations. Choose from traditional vertical aluminum balusters, clean and contemporary glass, industrial mesh or horizontal rod rails to frame the view. Multiple options available.

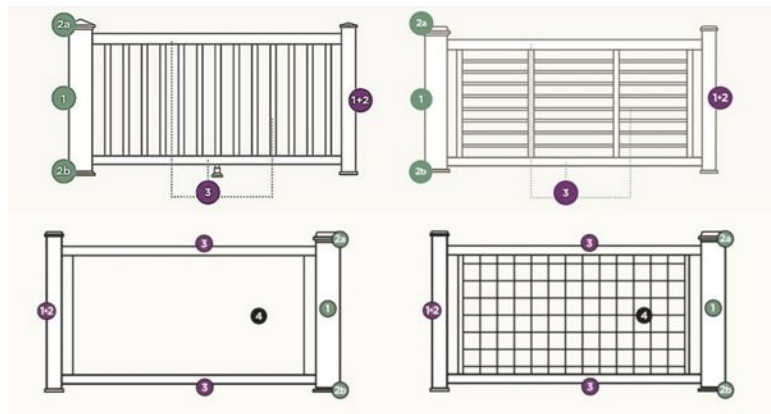
Shop Now

Multiple options and colors available



# Trex Signature® Railing Components

Trex Signature® is a 3-Step process. Choose Trex Signature® aluminum posts (which include a cap and skirt) for Steps 1 & 2 and pair with a rail and baluster kit or a rail and rod kit (Step 3). Or choose Trex composite post sleeves, caps and skirts for Steps 1, 2a & 2b, and then continue on to Step 3.



1. Post Sleeve
- 2a. Post Sleeve Cap
- 2b. Post Sleeve Skirt
3. Select Rail & Baluster Kit

All options can be topped with cocktail railing for a form-meets-function ledge with the exception of Glass Rail Kit.

[Shop Railing Accessories](#)

**INFILL OPTIONS**

**POSTS & POST COMPONENTS**

**RAILS, BALUSTERS & INFILL SPECS**

**ACCESSORY KITS**

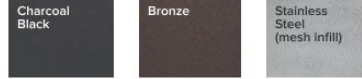
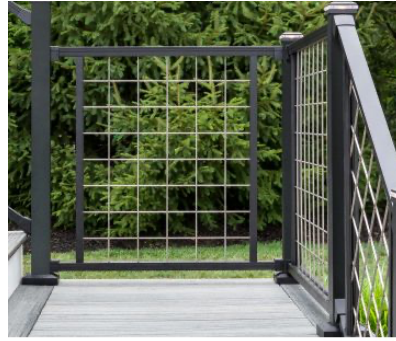




## Aluminum Railing

Signature Aluminum railing is available in two heights and three lengths. The traditional vertical posts can be customized using aluminum or composite posts.

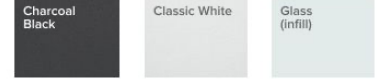
[Download our Railing Guide](#) to learn more.



## Mesh Railing

Our mesh, crosshatch stainless steel infill adds a striking industrial touch to any outdoor design.

[Download our Railing Guide](#) to learn more.



## Glass Railing

Tempered glass infill panels make unnecessary design elements vanish, so sweeping views can be the star.

[Shop Trex® Glass](#)  
[Download our Railing Guide](#) to learn more.



## Rod Rail

Horizontal rod railing achieves the design trifecta: Sleek, sturdy and undeniably modern.

[Download our Railing Guide](#) to learn more.

Trex Signature® Railing

**FEATURES**      **GALLERY**      **INFILL OPTIONS**      **INSPIRATION**      **Shop Now**



### Aluminum Post with Cap & Skirt

Aluminum posts can only be used with the Trex Signature® line.

**2.5" X 2.5"**  
**Actual Dimensions**

37" Post - Horizontal: 2.5" x 2.5" x 37" (63mm x 63mm x 939 mm)

43" Post - Horizontal: 2.5" x 2.5" x 43" (63mm x 63mm x



### Aluminum Crossover Post

**2.5" X 2.5"**  
**Actual Dimensions**

Aluminum posts can only be used with the Trex Signature® line.

36" Crossover Post – Horizontal (includes crossover bracket): 2.5" x 2.5" x 36" (63mm x 63mm x 914mm)



### Aluminum Joist Mount Post

**Actual External Dimensions of Insert: 3.75" X 3.75" X 7"**

For use with 4x4 Composite post sleeve. Use with all Trex railing heights.

63" Aluminum post (cut-to-length)  
Aluminum inserts with set screws

109 cm)

53" Post – Stair (cut-to-length): 2.5" x 2.5" x 53" (63mm x 63mm x 134 cm)

42" Crossover Post – Horizontal (includes crossover bracket): 2.5" x 2.5" x 42" (63mm x 63mm x 106 cm)

1/2" HG Bolts, washers and nuts (not pictured)  
Bolt spacing template



## Aluminum Surface Mount Post

**Actual External Dimensions of Insert:  
3.75" X 3.75" X 7"**

Can be used as an alternative to a traditional wood post under the post sleeve. Designed to be used on either decks or concrete surfaces.

Aluminum inserts with set screws  
2.5" IRC-compliant  
aluminum post with base



### 3. Stair-rail Kit w/Round Or Square Balusters: Top Rail, Bottom Rail, Round Or Square Balusters, Mounting & Support Hardware

Available in 6' or 8' lengths and 36" or 42" Rail height for horizontal and stair applications.

**Includes:**

Top Rail  
Bottom Rail  
Square Balusters  
Mounting & Support Hardware

**Actual Dimensions**

6' x 36": 72" x 36" (182 cm x 914mm)



### 3. Horizontal – Rail Kit w/Round Or Square Balusters: Top Rail, Bottom Rail, Square Or Round Balusters, Mounting & Support Hardware

Available in 6' or 8' lengths and 36" or 42" Rail height for horizontal and stair applications.

**Includes**

Top Rail  
Bottom Rail  
Round Balusters  
Mounting & Support Hardware

**Actual Dimensions**

6' x 36": 72" x 36" (182 cm



### Trex Signature® Railing Panel

Available in 6' or 8' lengths and 36" or 42" Rail height for horizontal applications. Only offered with square aluminum balusters.

**Includes**

1 Pallet of Trex Signature® Railing Panels (20 panels)  
Trex Signature® Railing Mounting Hardware must be ordered separately.

**Actual Dimensions**

6' x 36": 72" x 36" (182 cm x 914 mm)

8' x 36": 96" x 36" (243 cm x 914 mm)

6' x 42": 72" x 42" (182 cm x 106 cm)

8' x 42": 96" x 42" (243 cm x 106 cm)

8' x 36": 96" x 36" (243 cm x 914mm)  
 6' x 42": 72" x 42" (182 cm x 106 cm)

x 914 mm)  
 8' x 36": 96" x 36" (243 cm x 914 mm)  
 6' x 42": 72" x 42" (182 cm x 106 cm)  
 8' x 42": 96" x 42" (243 cm x 106 cm)



### 3. Rail & Rod Kit

Available in Charcoal Black Rails and Platinum Rods or Bronze Rails and Platinum Rods.

**Includes**

- Top and Bottom Rail
- Vertical Supports
- Aluminum Rods
- Hardware and Bracket Pack
- Anti Rattle Strips

**Actual Dimensions**

6' x 36" (72-in x 36-in (182 cm x 914 mm)) Rail & Rod Kit - Horizontal or Stair  
 8' x 36" (96-in x 36-in (243 cm x 914 mm)) Rail & Rod Kit - Horizontal or Stair  
 6' x 42" (72-in x 42-in (182



### Trex Signature® Glass Rail Kit\*

Available with Charcoal Black or Classic White railing. \*Glass infill sold separately. Should be sourced locally.

**Includes**

- Top and Bottom Rail
- Hardware and Bracket Pack
- Footblock

**Actual Dimensions**

6' x 36" (72-in x 36-in (182 cm x 914 mm)) – Horizontal



### Trex Signature® Mesh Rail Kit\*

Available with Charcoal Black or Bronze railing. \*Mesh infill sold separately.

**Includes**

- Top and Bottom Rail
- Hardware and Bracket Pack
- Verticals
- Anti-rattle Gaskets
- Footblock

**Actual Dimensions**

6' x 36" (72-in x 36-in (182 cm x 914 mm)) - Horizontal or Stair  
 8' x 36" (96-in x 36-in (243 cm x 914 mm)) - Horizontal or Stair



cm x 106 cm)) Rail & Rod Kit  
- Horizontal or Stair  
8' x 42" (96-in x 42-in (243  
cm x 106 cm)) Rail & Rod Kit  
- Horizontal or Stair

6' x 42" (72-in x 42-in (182  
cm x 106 cm)) - Horizontal  
or Stair  
8' x 42" (96-in x 42-in (243  
cm x 106 cm)) - Horizontal  
or Stair



## Trex Signature® Mesh Panel

Available in stainless steel.

### **Includes**

Mesh panel

### **Actual Dimensions**

64" x 32 - 3/8" Stainless

Steel Mesh

88" x 32 - 3/8" Stainless

Steel Mesh

88" x 38 - 3/8" Stainless

Steel Mesh

108 - 3/16" x 36 - 3/16"

Universal 316 Stainless

Steel Mesh – Stair



### Fixed Bracket (4-pack) – Horizontal

**Includes**

- Qty (2) Fixed Top Rail Bracket and Cover–Horizontal
- Qty (2) Fixed Bottom Rail Bracket and Cover–Horizontal
- Qty (1) Fastener Pack



### Fixed Bracket (4-pack) – Stair

**Includes**

- Qty (1) Fixed Top Rail Bracket 1 and Cover–Stair
- Qty (1) Fixed Top Rail Bracket 2 and Cover–Stair
- Qty (1) Fixed Bottom Rail Bracket 1 and Cover–Stair
- Qty (1) Fixed Bottom Rail Bracket 2 and Cover–Stair
- Qty (1) Fastener Pack



### Swivel Crossover Bracket Kit – Stair

**Includes**

- Qty (1) Swivel Crossover Bracket–Stair
- Qty (2) Post to Bracket Fasteners



### Swivel Bracket – Horizontal

**Includes**

- Qty (1) Swivel Top Rail



### Swivel Bracket – Stair

**Includes**

- Qty (1) Swivel Top Rail



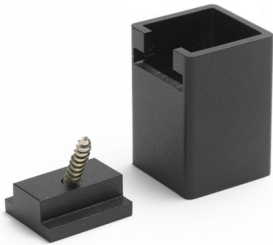
### Compound Swivel Bracket – Stair

Bracket and Cover–  
Horizontal  
Qty (1) Swivel Bottom Rail  
Bracket and Cover–  
Horizontal  
Qty (2) Fastener Covers  
Qty (1) Fastener Pack

Bracket and Cover–Stair  
Qty (1) Swivel Bottom Rail  
Bracket and Cover–Stair  
Qty (2) Fastener Covers  
Qty (1) Fastener Pack

**Includes**

Qty (1) Compound Swivel  
Top Rail Bracket and  
Cover–Stair  
Qty (1) Compound Swivel  
Bottom Rail Bracket and  
Cover–Stair  
Qty (2) Fastener Covers  
Qty (1) Fastener Pack



## Aluminum Footblock

**Includes**

Qty (1) Footblock  
Qty (1) Footblock Anchor  
and fastener



## Ready to Build?

Find a retailer or contractor to help you build your dream deck.

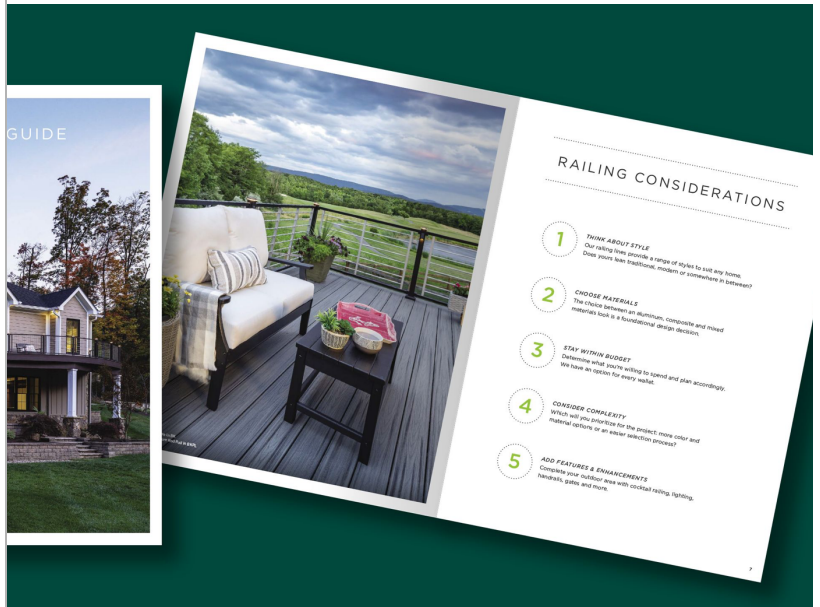
Find a  
Retailer

Find a  
Deck  
Builder

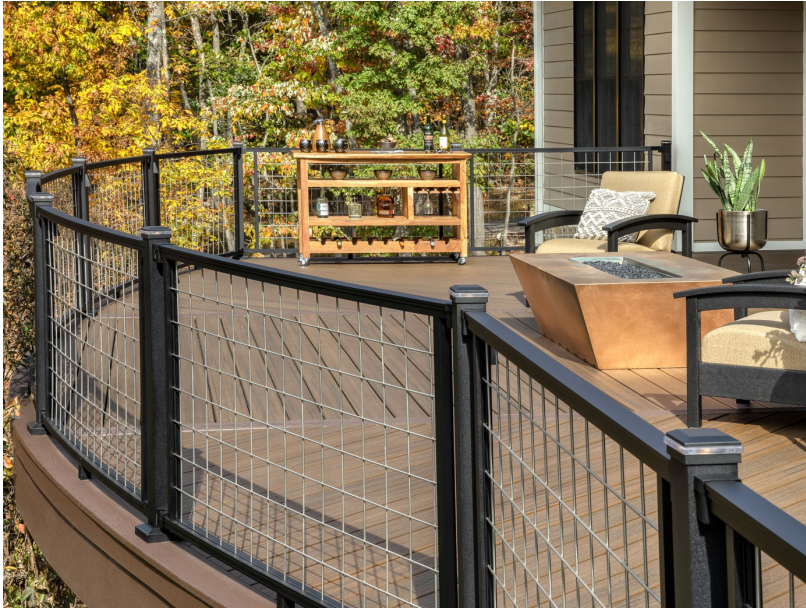
## Your complete guide to Trex® Railing

Learn more about the best  
Trex Railing choice for you.

Download  
Railing Guide



Trex Signature®



## Trex Signature® Curved Railing

Signature Railing is available as curvable hand railing and is offered in three matte finishes: Charcoal Black, Bronze or Classic White. Learn more about how to order.

[Order Now](#)

@TREXCOMPANY

# You Make Us Look Good

EXPLORE THIS COLLECTION OF BACKYARD INSPIRATION FROM HOMEOWNERS WHO SAID YES TO TREX SIGNATURE RAILING.

# Works Well With

**Trex Transcend®  
Decking**

[EXPLORE](#)

**Outdoor Lighting**

[EXPLORE](#)

**Aluminum Gates**

[EXPLORE](#)

*Photos © 2021 Discovery or its subsidiaries and affiliates. All rights reserved.*

# Order a sample

TREX.COM/SHOP



FIND A RETAILER



FIND A BUILDER

## CUSTOMER SUPPORT

[Live Chat Now](#)

[Contact Us](#)

[FAQ](#)

[Trex Owners](#)

[Customer Resources](#)

[Warranties](#)

[Warranty Claim](#)

[Product Safety](#)

[Class Action Settlements](#)

[Natural Weathering](#)

[Care and Cleaning](#)

## OUR COMPANY

[About Trex](#)

[Careers](#)

[News](#)

[Press](#)

[Investor Relations](#)

[Recycling](#)

[Donation](#)

[Request](#)

## GET STARTED

[Deck Starter Tool](#)

[Deck Designer](#)

[Deck Cost](#)

[Calculator](#)

[Color Selector](#)

[Lighting](#)

[Calculator](#)

[Comparison Tool](#)

## FOR THE PROS

[Trade Resources](#)

[Become a Trex Pro](#)

[Architects & Specifiers](#)

[Builders](#)

## MORE INFO

[Return Policy](#)

[Privacy Policy](#)

[Security Policy](#)

[Human Rights Policy](#)

[Vendor and Customer Code of Conduct and Ethics](#)

[Environmental Policy](#)

[Occupational Health & Safety Policy](#)

[Canadian Shoppers](#)

[Terms Of Use](#)

[California](#)

[Transparency in Supply](#)

[Trex Apparel](#)

[Site Map](#)



[Find all retailers](#)

Call us: 1-800-BUY-TREX

Copyright © 2023 Trex Company, Inc. All rights reserved.

Photos and videos © 2023 Warner Bros. Discovery, Inc. or its subsidiaries and affiliates.

All trademarks are the property of their respective owners. All rights reserved.

## Country

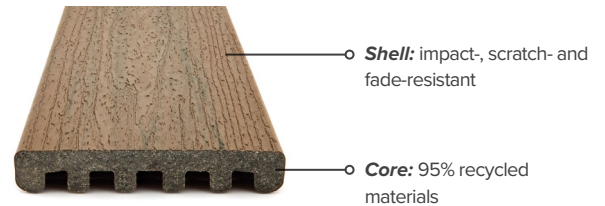
By choosing your country, you acknowledge that you have read Trex's Privacy's Policy





## LOW-COST, HIGH-PERFORMANCE DECKING & FASCIA

Trex Enhance® decking and Trex® Fascia are wood thermoplastic composite lumber (WTCL) boards with an integrated shell that covers the boards on the top surface and sides. The integrated shell consists of a proprietary surface formulation that produces a natural, wood-like grain pattern finish. An alternative to naturally durable hardwood lumber, Enhance Decking and Fascia are ICC-ES SAVE-certified to be a minimum of 95.4% recycled content of wood fiber and polyethylene by weight.



### DECKING

### FASCIA



1" Grooved edge

1" Square edge



8" or 12" Widths

FEATURES	DECKING BOARDS		FASCIA BOARDS	
	1" x 6"	8"	12"	
Actual Dimensions - Standard	.94" x 5.5"	.56" x 7.25"	.56" x 11.375"	
Actual Dimensions - Metric	24 mm x 140 mm	14 mm x 184 mm	14 mm x 288 mm	
Available Lengths - Standard	12', 16', 20'	12'	12'	
Available Lengths - Metric	365 cm, 487 cm, 609 cm	365 cm	365 cm	
Grooved Edge	X			
Square Edge	X	X	X	
Weight per Lineal Foot	1.9 lbs	2.0 lbs	3.3 lbs	

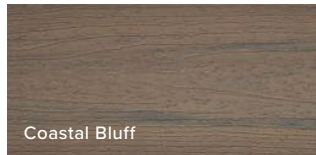
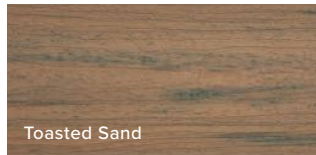
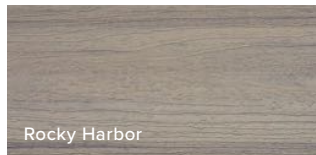
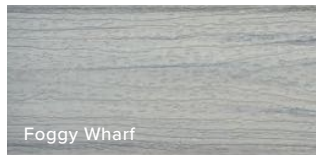
**PHYSICAL & MECHANICAL PROPERTIES**

TEST	TEST METHOD	VALUE
Flame Spread	ASTM E 84	125
Thermal Expansion	ASTM D 1037	1.9 × 10 <sup>-5</sup> in/in/°F
Moisture Absorption	ASTM D 1037	< 1%
Screw Head Pull-Through	ASTM D1761	161 lbf/screw*
Fungus Resistance	ASTM D1413	Rating – no decay
Termite Resistance	AWPAE1-72	Rating = 9.6

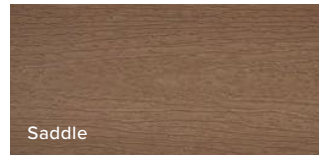
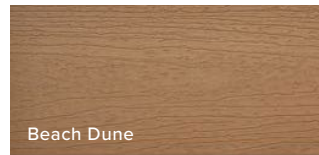
\*Fastener used in testing: #8 x 2.5" HEADCOTE Stainless Steel Screw

**COLORS**

Naturals (multi-tonal)



Basics (monochromatic)



**FASTENERS**



**Trex Hideaway®  
Hidden Fastening System**

Self-gapping, glass-filled nylon fastener with 304 grade stainless steel, sharp point screw for wood framing



**Other Approved Fasteners**

Color-matched composite deck screw



Color-coordinated fascia screw

Uncoated stainless steel fascia screw

For a full list of approved fasteners, download our Installation Guide at [trex.com/literature](http://trex.com/literature)