

ELIA GROUP

511 WOODWARD

HISTORIC DISTRICT COMMISSION

March 8, 2023



ELIA

ICONIC MOMENTS DRIVE OUR BUSINESS



ELIA GROUP UNLOCKS OPPORTUNITIES

At Elia Group, we approach real estate and hospitality investment, development, operations, and management with a fully-integrated and experiential mindset in order to create iconic environments and impactful experiences for everyone to enjoy.

Here's how we do it:

- Through our obsessive attention to detail, we combine the art of hospitality with the art of real estate.
- We start with a people-first approach and build everything from the personal relationships and reputations we create.
- We employ the collective ability to think like an owner/operator and real estate investor to deliver sustainable, long-term success.
- We have an unwavering dedication to create attainable experiences for everyone to enjoy in a wide variety of environments (restaurants, bars, lounges, retail, hospitality, multi-family, office, and public spaces).
- We think beyond the current needs of the marketplace to design and deliver experiences far beyond expectations.
- We are a collaborative and entrepreneurial team with extensive expertise in law, real estate, hospitality, and business.



UNIQUE
OPPORTUNITIES



ICONIC
EXPERIENCES

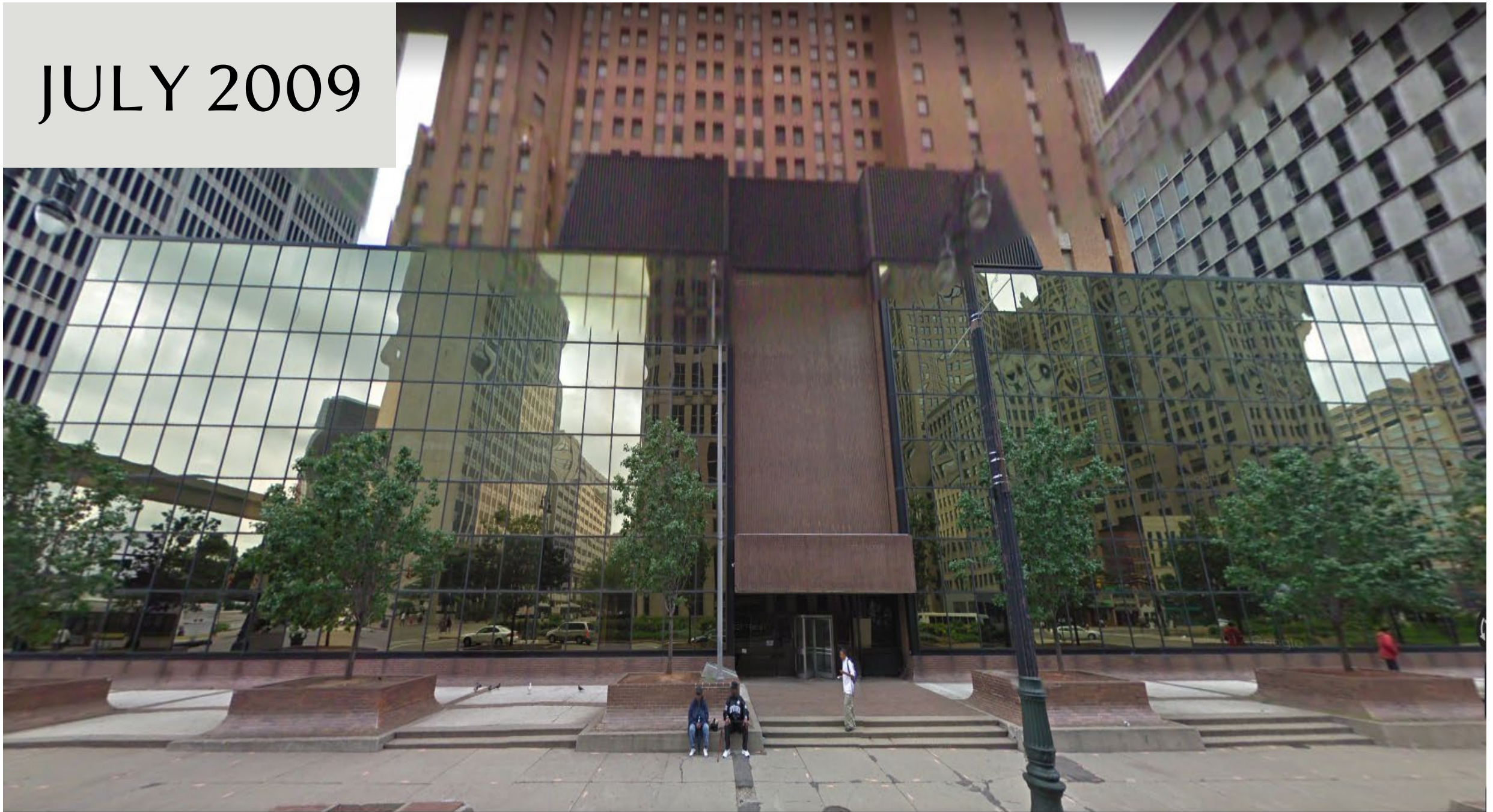
CASE STUDY: 511 WOODWARD

Longtime Dilapidated & Vacant Building Transformed into Central Business District Focal Point

- The 511 Woodward Building was constructed in 1972 and sat vacant for decades prior to Elia Group's acquisition and development of the property.
- Elia Group acquired the property in 2018 and completed a full property renovation, including a new architectural screen wall. The project was completed in 2020.
- While the building sat vacant for a number of years, the Elia Group team completely redefined the building through redevelopment, transforming it into a focal point of downtown Detroit.
- Elia Group attracted Capital One Financial Corporation to lease and build out the first two floors of the building and transform the space into the Capital One Cafe which opened at the start of 2021. This was the first Capital One Cafe opened in the Metro Detroit Area.
- Elia Group spent the better part of the 2022 calendar year working through a comprehensive development of a new restaurant concept in partnership with world-renowned design firm iCrave.
- This bespoke concept will deliver a hospitality experience unlike anything currently available in Michigan or the Midwest. The in-house team of hospitality experts at Elia Group worked through every front-of-house and back-of-house design detail and touchpoint from material selections and furnishings to audio/visual technology to ensure a magnetic environment and multifaceted guest experience.



JULY 2009



Sept. 2013



Oct. 2014



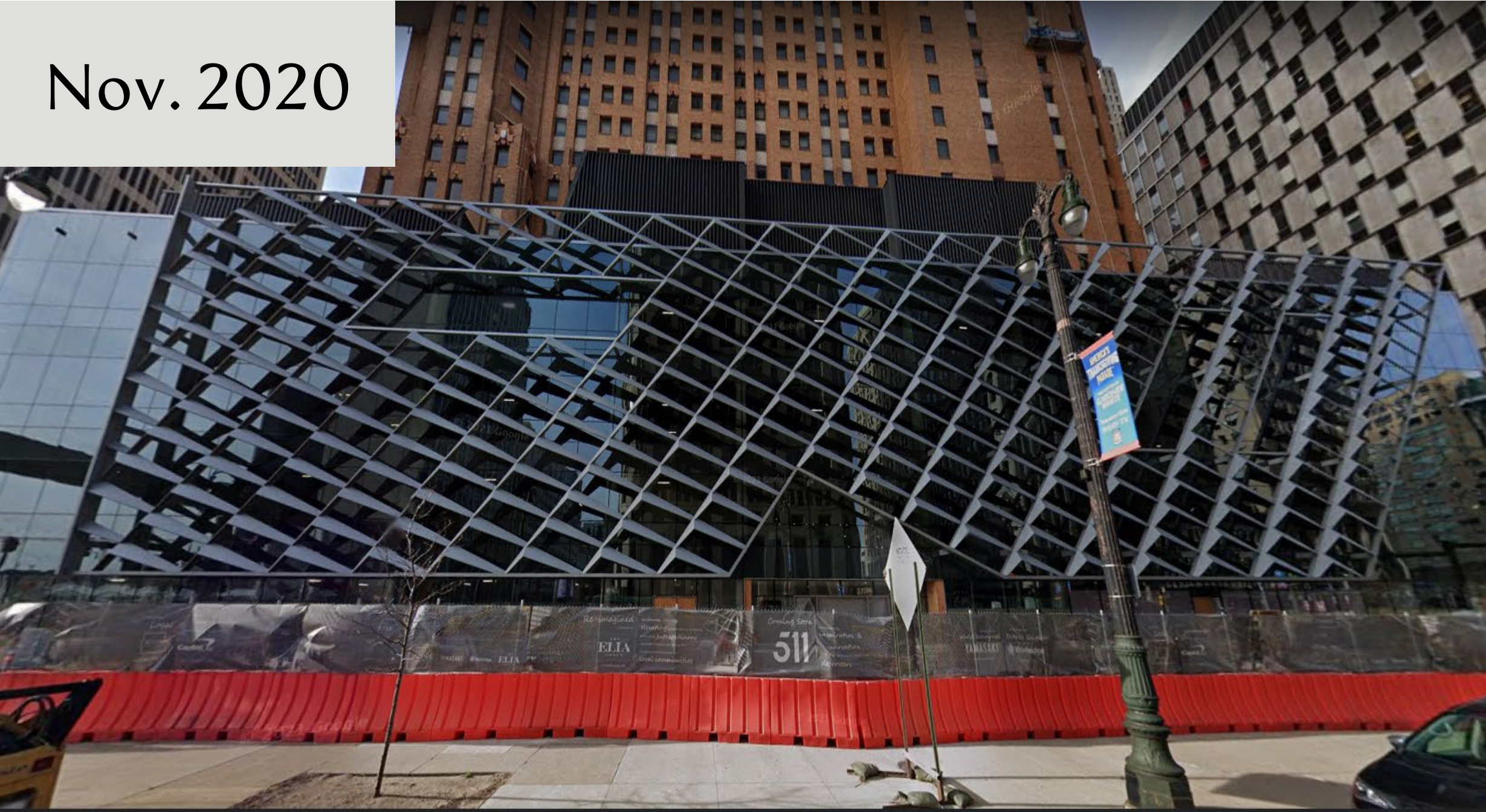
July 2017



Aug. 2018



Nov. 2020





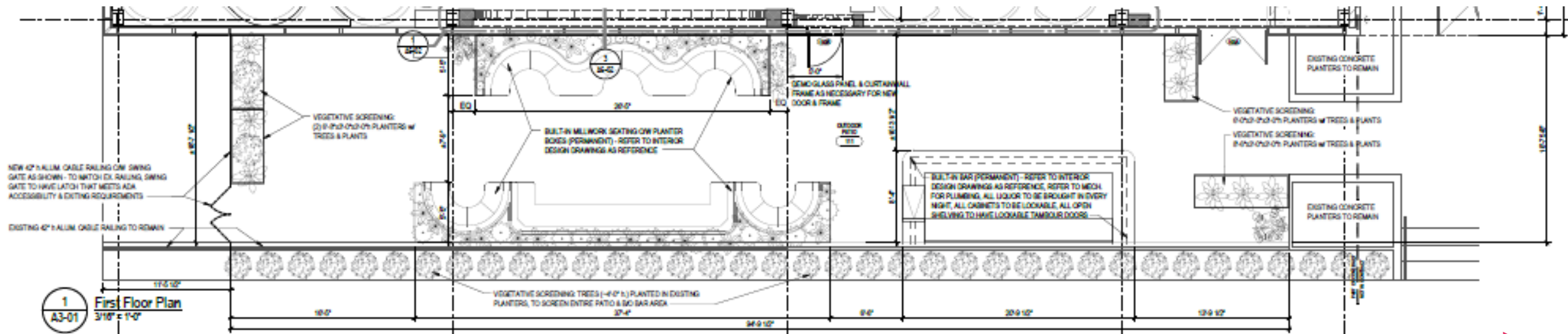
OUTDOOR PATIO - SOUTH



OUTDOOR PATIO

511 Woodward – South

South Side of Building



Restaurant Patio



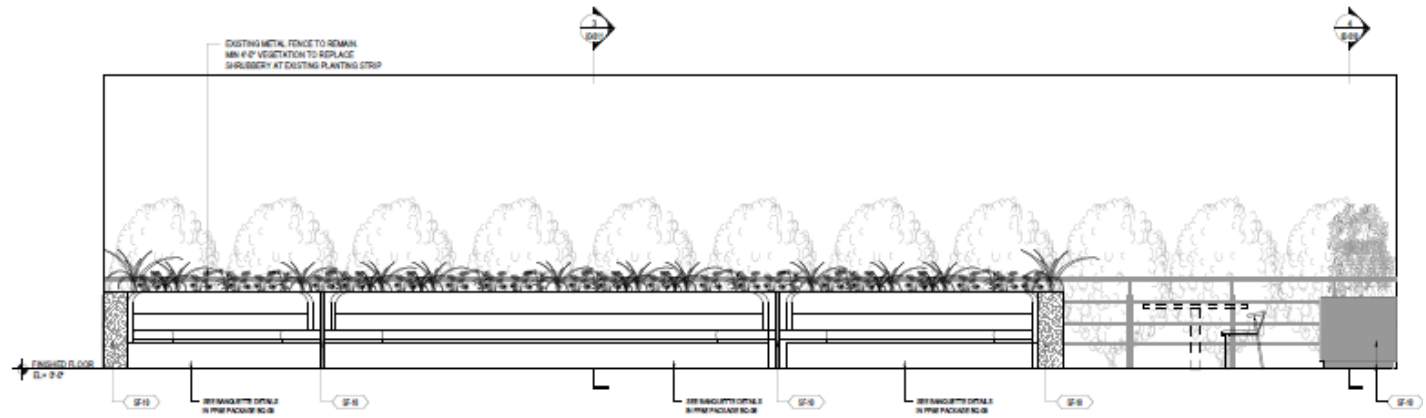
EXISTING CONDITIONS

511 Woodward – South

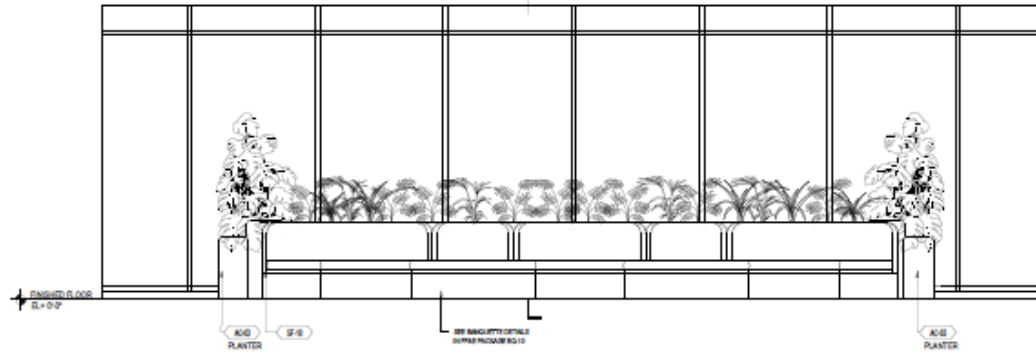


OUTDOOR PATIO

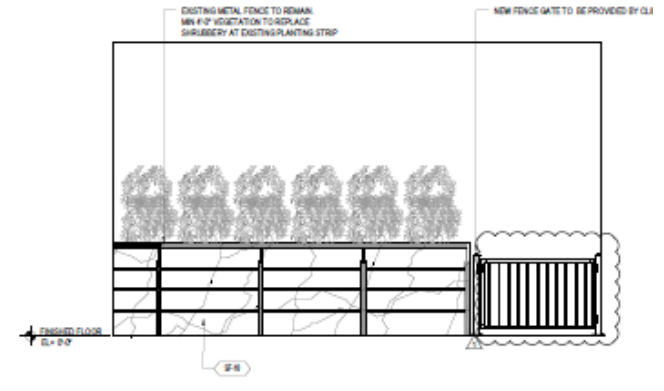
511 Woodward – South



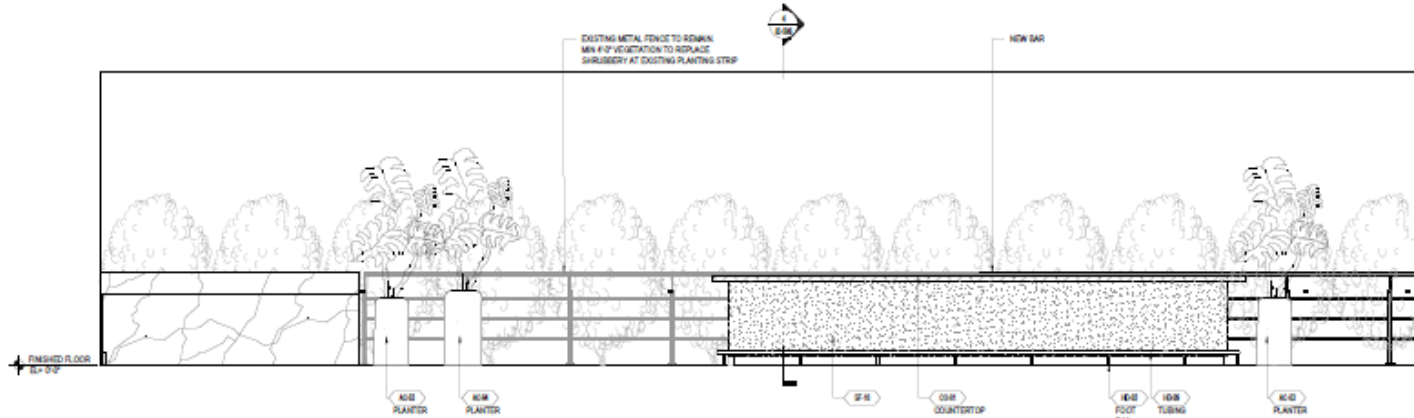
5 INTERIOR ELEVATION - PATIO
SCALE: 3/8"=1'-0"



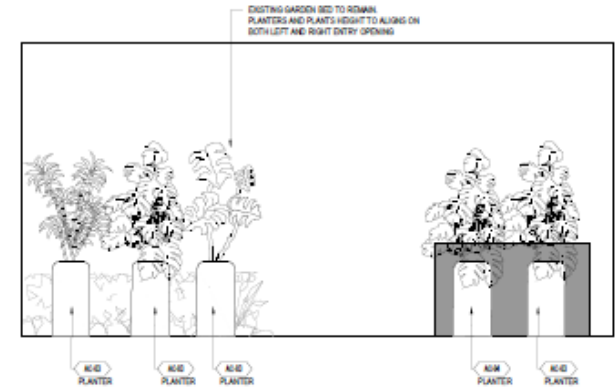
4 INTERIOR ELEVATION - PATIO
SCALE: 3/8"=1'-0"



3 INTERIOR ELEVATION - PATIO
SCALE: 3/8"=1'-0"



2 INTERIOR ELEVATION - PATIO
SCALE: 3/8"=1'-0"



1 INTERIOR ELEVATION - PATIO
SCALE: 3/8"=1'-0"



HDC APPROVAL

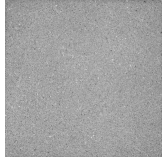



- The proposed addition will improve property values, strengthen the local economy, and foster civic beauty, driving additional visitation and economic activity to downtown Detroit.
- In compliance with the Secretary of Interior standards, the proposed addition will be:
 - Differentiated from the old and compatible with the historic integrity of the property; and
 - Undertaken in a manner that if removed in the future, it will not impair the integrity of the historic property
- Proposed addition will take into account relevant “elements of design” that are characteristic to the building and the historic district



ELIA

THANK YOU



CONTROL #	DESCRIPTION	MFR / VENDOR	IMAGE
CONCRETE			
CO-01	<p>OUTDOOR CONCRETE @PATIO DESCRIPTION: CONCRETE SLABS PRODUCT NAME#: DEXTERITY COLOR: 03 PLATINUM/MATTE NOTES: PROVIDE SAMPLE TO ICRAVE FOR REVIEW AND APPROVAL</p>	<p>DEX INDUSTRIES 675 METROPOLITAN PARKWAY #1068 ATLANTA, GA 30310- USA P (404) 753-9208 F (404) 756-9208 Contact LAURIEL LEONARD LAURIEL@DEXINDUSTRIES.COM</p>	
HARDWARE			
HD-02	<p>FOOT RAIL BRACKET DESCRIPTION: BAR RAIL BRACKET PRODUCT NAME#: SKU: BB-200-2 FINISH/MATERIAL: SATIN BRUSHED BRASS DIMENSIONS: 2" OUTSIDE DIAMETER NOTES: PROVIDE SAMPLE TO ICRAVE FOR REVIEW AND APPROVAL</p>	<p>KEGWORKS.COM 1460 MILITARY RD KENMORE, NY 14217- USA P (877) 636-3673 Contact CHRISTOPHER UNIVERSAL P 716.362.9212 cuniversal@kegworks.com</p>	
HD-09	<p>FOOT RAIL TUBING DESCRIPTION: FOOT RAILING TUBING PRODUCT NAME#: SKU: SB-990-XX FINISH/MATERIAL: SATIN BRUSHED BARSS DIMENSIONS: 2" OUTSIDE DIAMETER NOTES: PROVIDE SAMPLE TO ICRAVE FOR REVIEW AND APPROVAL</p>	<p>KEGWORKS.COM 1460 MILITARY RD KENMORE, NY 14217- USA P (877) 636-3673 Contact CHRISTOPHER UNIVERSAL P 716.362.9212 cuniversal@kegworks.com</p>	
SPECIAL FINISH			
SF-10	<p>OUTDOOR PLASTER DESCRIPTION: CONCRETE LOOK PLASTER MODEL #: MARMORINO LIME PLASTER COLOR/FINISH: VPC-5790A SIZE/DIMENSIONS/WIDTH: REFERS TO DRAWINGS FOR DIMENSIONS NOTES: PROVIDE SAMPLE TO ICRAVE FOR REVIEW AND APPROVAL</p>	<p>TEXSTON 8025 DEERING AVE CANOGA PARK, CA 91304- USA P (818) 227-4812 F (818) 227-4852 Contact JENNIFER DIGBERG* Jennifer@texston.com</p>	

PROJECT NAME: ZUZU RESTAURANT

OUTDOOR CONCRETE @PATIO

PROJECT NUMBER: 22-037

ISSUE DATE: 11 OCT 2022

REVISION DATE:

MANUFACTURER: DEX INDUSTRIES
675 METROPOLITAN PARKWAY
#1068
ATLANTA, GA 30310-, United States
P: (404) 753-9208 F: (404) 756-9208
WWW.DEXINDUSTRIES.COM

DISTRIBUTOR:

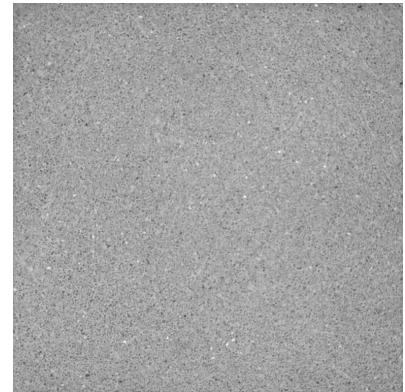
CONTACT: LAURIEL LEONARD
LAURIEL@DEXINDUSTRIES.COM

CONTACT:

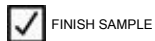
ITEM COST: \$0.00

LEAD TIME:
TOTAL COST: \$0.00

DESCRIPTION CONCRETE SLABS
PRODUCT NAME/# DEXTERITY
COLOR 03 PLATINUM/MATTE
NOTES PROVIDE SAMPLE TO ICRAVE FOR
REVIEW AND APPROVAL



SUBMITTALS:



AREAS:

QTY PER AREA:

- PATIO
- BANQUETTE AREA
 - BAR

SPECIAL INSTRUCTIONS:

1. CONCRETE TO BE SEALED AND PROTECTED AS REQUIRED BY LOCATION AND INSTALLATION; AND TO BE INSTALLED PER MANUFACTURER RECOMMENDATION.



CO-01

PROJECT NAME: ZUZU RESTAURANT

OUTDOOR CONCRETE @PATIO

PROJECT NUMBER: 22-037

-
2. FOR ANY ITEM SUPPLIED BY A VENDOR OTHER THAN WHAT IS SPECIFIED ABOVE, SUBMITTAL OF SPECIFICATIONS, CERTIFICATIONS AND FINISH SAMPLES, ARE REQUIRED FOR REVIEW AND WRITTEN APPROVAL BY ICRAVE AND THE CLIENT.
 3. ALL MATERIALS MUST BE CONTRACT QUALITY, SUITABLE FOR COMMERCIAL AND HEAVY TRAFFIC USE AND ARE TO PERFORM ACCORDINGLY.
 4. CONTRACTOR TO VERIFY THAT ALL MATERIALS COMPLY WITH LOCAL, STATE AND FEDERAL CODES, INCLUDING STANDARD METHODS OF TESTS AND CLASSIFICATION FOR CIGARETTE IGNITION.
 5. ALL FINISH SAMPLES TO BE SUBMITTED FOR FINAL APPROVAL PRIOR TO FABRICATION.
 6. REFER TO DRAWINGS FOR EXACT LOCATION AND/OR MOUNTING HEIGHTS AND MANNER OF INSTALLATION. IN THE EVENT OF A DISCREPANCY BETWEEN DRAWINGS AND SPECIFICATIONS, PLEASE CONTACT ICRAVE IMMEDIATELY FOR WRITTEN CLARIFICATION.
 7. PURCHASER TO CONFIRM WARRANTIES, AND SUBMIT PERFORMANCE CERTIFICATES AS REQUIRED.

PROJECT NAME: ZUZU RESTAURANT

FOOT RAIL BRACKET

PROJECT NUMBER: 22-037

ISSUE DATE: 11 OCT 2022

REVISION DATE:

MANUFACTURER: KEGWORKS.COM
1460 MILITARY RD
KENMORE, NY 14217-, United States
P: (877) 636-3673
WWW.KEGWORKS.COM

DISTRIBUTOR:

CONTACT: CHRISTOPHER UNIVERSAL
P: 716.362.9212
cuniversal@kegworks.com

CONTACT:

ITEM COST: \$0.00

LEAD TIME:

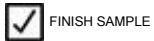
TOTAL COST:

\$0.00

DESCRIPTION BAR RAIL BRACKET
PRODUCT NAME/# SKU: BB-200-2
FINISH/MATERIAL SATIN BRUSHED BRASS
DIMENSIONS 2" OUTSIDE DIAMETER
NOTES PROVIDE SAMPLE TO ICRAVE FOR
REVIEW AND APPROVAL



SUBMITTALS:



AREAS:

1ST FLOOR

- BAR

QTY PER AREA:

AREAS:

2ND FLOOR

- BAR

QTY PER AREA:

SPECIAL INSTRUCTIONS:



HD-02

PROJECT NAME: ZUZU RESTAURANT

FOOT RAIL BRACKET

PROJECT NUMBER: 22-037

-
1. FOR ANY ITEM SUPPLIED BY A VENDOR OTHER THAN WHAT IS SPECIFIED ABOVE, SUBMITTAL OF SPECIFICATIONS, CERTIFICATIONS AND FINISH SAMPLES, ARE REQUIRED FOR REVIEW AND WRITTEN APPROVAL BY ICRAVE AND THE CLIENT.
 2. ALL MATERIALS MUST BE CONTRACT QUALITY, SUITABLE FOR COMMERCIAL AND HEAVY TRAFFIC USE AND ARE TO PERFORM ACCORDINGLY.
 3. CONTRACTOR TO VERIFY THAT ALL MATERIALS COMPLY WITH LOCAL, STATE AND FEDERAL CODES, INCLUDING STANDARD METHODS OF TESTS AND CLASSIFICATION FOR CIGARETTE IGNITION.
 4. ALL FINISH SAMPLES TO BE SUBMITTED FOR FINAL APPROVAL PRIOR TO FABRICATION.
 5. EXTERIOR, INTERIOR AND DECORATIVE HARDWARE (HINGES, BOLTS, SCREWS, ANCHORS, ETC) TO BE NON-CORROSIVE. ALL EXPOSED HARDWARE TO BE NEATLY MITERED, SANDED, AND SPLINTER FREE.
 6. ALL OUTDOOR FINISHES TO BE MARINE GRADE AND SUITABLE FOR HIGH HUMIDITY AND SALT AIR LOCATIONS.
 7. REFER TO DRAWINGS FOR EXACT LOCATION AND/OR MOUNTING HEIGHTS AND MANNER OF INSTALLATION. IN THE EVENT OF A DISCREPANCY BETWEEN DRAWINGS AND SPECIFICATIONS, PLEASE CONTACT ICRAVE IMMEDIATELY FOR WRITTEN CLARIFICATION.
 8. PURCHASER TO CONFIRM WARRANTIES AND SUBMIT PERFORMANCE CERTIFICATES AS REQUIRED.

PROJECT NAME: ZUZU RESTAURANT

FOOT RAIL TUBING

PROJECT NUMBER: 22-037

ISSUE DATE: 11 OCT 2022

REVISION DATE:

MANUFACTURER: KEGWORKS.COM
1460 MILITARY RD
KENMORE, NY 14217-, United States
P: (877) 636-3673
WWW.KEGWORKS.COM

DISTRIBUTOR:

CONTACT: CHRISTOPHER UNIVERSAL
P: 716.362.9212
cuniversal@kegworks.com

CONTACT:

ITEM COST: \$0.00

LEAD TIME:

TOTAL COST: \$0.00

DESCRIPTION FOOT RAILING TUBING
PRODUCT NAME/# SKU: SB-990-XX
FINISH/MATERIAL SATIN BRUSHED BARSS
DIMENSIONS 2" OUTSIDE DIAMETER
NOTES PROVIDE SAMPLE TO ICRAVE FOR
REVIEW AND APPROVAL



SUBMITTALS:

AREAS:
1ST FLOOR
- BAR

QTY PER AREA:

AREAS:
2ND FLOOR
- BAR

QTY PER AREA:

SPECIAL INSTRUCTIONS:



HD-09

PROJECT NAME: ZUZU RESTAURANT

FOOT RAIL TUBING

PROJECT NUMBER: 22-037

-
1. FOR ANY ITEM SUPPLIED BY A VENDOR OTHER THAN WHAT IS SPECIFIED ABOVE, SUBMITTAL OF SPECIFICATIONS, CERTIFICATIONS AND FINISH SAMPLES, ARE REQUIRED FOR REVIEW AND WRITTEN APPROVAL BY ICRAVE AND THE CLIENT.
 2. ALL MATERIALS MUST BE CONTRACT QUALITY, SUITABLE FOR COMMERCIAL AND HEAVY TRAFFIC USE AND ARE TO PERFORM ACCORDINGLY.
 3. CONTRACTOR TO VERIFY THAT ALL MATERIALS COMPLY WITH LOCAL, STATE AND FEDERAL CODES, INCLUDING STANDARD METHODS OF TESTS AND CLASSIFICATION FOR CIGARETTE IGNITION.
 4. ALL FINISH SAMPLES TO BE SUBMITTED FOR FINAL APPROVAL PRIOR TO FABRICATION.
 5. EXTERIOR, INTERIOR AND DECORATIVE HARDWARE (HINGES, BOLTS, SCREWS, ANCHORS, ETC) TO BE NON-CORROSIVE. ALL EXPOSED HARDWARE TO BE NEATLY MITERED, SANDED, AND SPLINTER FREE.
 6. ALL OUTDOOR FINISHES TO BE MARINE GRADE AND SUITABLE FOR HIGH HUMIDITY AND SALT AIR LOCATIONS.
 7. REFER TO DRAWINGS FOR EXACT LOCATION AND/OR MOUNTING HEIGHTS AND MANNER OF INSTALLATION. IN THE EVENT OF A DISCREPANCY BETWEEN DRAWINGS AND SPECIFICATIONS, PLEASE CONTACT ICRAVE IMMEDIATELY FOR WRITTEN CLARIFICATION.
 8. PURCHASER TO CONFIRM WARRANTIES AND SUBMIT PERFORMANCE CERTIFICATES AS REQUIRED.

PROJECT NAME: ZUZU RESTAURANT

OUTDOOR PLASTER

PROJECT NUMBER: 22-037

ISSUE DATE: 11 OCT 2022

REVISION DATE:

MANUFACTURER: TEXSTON
8025 DEERING AVE
CANOGA PARK, CA 91304-, United States
P: (818) 227-4812 F: (818) 227-4852
WWW.TEXSTON.COM

DISTRIBUTOR:

CONTACT: JENNIFER DIGBERG*
Jennifer@texston.com

CONTACT:

ITEM COST: \$0.00

LEAD TIME:

TOTAL COST:

\$0.00

DESCRIPTION CONCRETE LOOK PLASTER
MODEL # MARMORINO LIME PLASTER
COLOR/FINISH VPC-5790A
SIZE/DIMENSIONS/WIDTH REFERS TO DRAWINGS FOR DIMENSIONS
NOTES PROVIDE SAMPLE TO ICRAVE FOR REVIEW AND APPROVAL



SUBMITTALS:

AREAS:

QTY PER AREA:

PATIO

- BANQUETTE AREA

- BAR

- LOUNGE AREA

SPECIAL INSTRUCTIONS:

1. FOR ANY ITEM SUPPLIED BY A VENDOR OTHER THAN WHAT IS SPECIFIED ABOVE, SUBMITTAL OF SPECIFICATIONS, CERTIFICATIONS AND FINISH SAMPLES, ARE REQUIRED FOR REVIEW AND WRITTEN APPROVAL BY ICRAVE AND THE CLIENT.



SF-10

PROJECT NAME: ZUZU RESTAURANT

OUTDOOR PLASTER

PROJECT NUMBER: 22-037

2. ALL MATERIALS MUST BE CONTRACT QUALITY, SUITABLE FOR COMMERCIAL AND HEAVY TRAFFIC USE AND ARE TO PERFORM ACCORDINGLY.

3. CONTRACTOR TO VERIFY THAT ALL MATERIALS COMPLY WITH LOCAL, STATE AND FEDERAL CODES, INCLUDING STANDARD METHODS OF TESTS AND CLASSIFICATION FOR CIGARETTE IGNITION.

4. ALL FINISH SAMPLES TO BE SUBMITTED FOR FINAL APPROVAL PRIOR TO FABRICATION.

5. ALL SOLID WOOD, MDF AND PLYWOOD USED SHALL BE KILN DRIED TO MOISTURE CONTENTS (MC) OF 6-8% AND SHALL BE ACCLIMATIZED IN THE PLANT FOR AT LEAST 2 WEEKS PRIOR TO MILLING.

6. MATERIAL TO BE FREE OF DEFECTS THAT WOULD IMPAIR FINISH.

7. ALL FACE VENEERS SHALL BE MATCHED FOR COLOR AND GRAIN TO PRESENT A UNIFORM APPEARANCE.

8. ALL HORIZONTAL SURFACES AND COUNTERTOPS MUST BE SCRATCH RESISTANT AND HAVE A PROTECTIVE SEALER TO PREVENT WATER PENETRATIONS AND/OR STAINING.


9. ALL OUTDOOR FINISHES TO BE MARINE GRADE AND SUITABLE FOR HIGH HUMIDITY AND SALT AIR LOCATIONS.

10. REFER TO DRAWINGS FOR EXACT LOCATION AND/OR MOUNTING HEIGHTS AND MANNER OF INSTALLATION. IN THE EVENT OF A DISCREPANCY BETWEEN DRAWINGS AND SPECIFICATIONS, PLEASE CONTACT ICRAVE IMMEDIATELY FOR WRITTEN CLARIFICATION.

11. PURCHASER TO CONFIRM WARRANTIES AND SUBMIT PERFORMANCE CERTIFICATES AS REQUIRED.



FF&E Report
PROJECT: ZUZU RESTAURANT
PROJECT #: 22-037
ISSUE DATE: 11 OCT 2022
REV DATE: 18 NOV 2022

CONTROL #	DESCRIPTION	MFR / VENDOR	IMAGE
ACCESSORIES			
AC-03	OUTDOOR MEDIUM PLANTER DESCRIPTION: OUTDOOR PLANTER PRODUCT NAME#: GATSBY PLANTERS ø40x80 DIMENSIONS: 15 3/4" DIAMETER X 31 1/2" HEIGHT FINISH/MATERIAL: POLYETHYLENE COLOR: BASIC. ECRU 4003 NOTES: PROVIDE SAMPLE TO ICRAVE FOR REVIEW AND APPROVAL	VONDOM LLC D&D BUILDING 979, 3RD AVE SUITE 1532 NEW YORK, NY 10022 USA P 212 207 3252 Contact Default	

CONTROL #	DESCRIPTION	MFR / VENDOR	IMAGE
ACCESSORIES			
AC-03	<p>OUTDOOR MEDIUM PLANTER DESCRIPTION: OUTDOOR PLANTER PRODUCT NAME#: GATSBY PLANTERS ø40x80 DIMENSIONS: 15 3/4" DIAMETER X 31 1/2" HEIGHT FINISH/MATERIAL: POLYETHYLENE COLOR: BASIC. ECRU 4003 NOTES: PROVIDE SAMPLE TO ICRAVE FOR REVIEW AND APPROVAL</p>	<p>VONDOM LLC D&D BUILDING 979, 3RD AVE SUITE 1532 NEW YORK, NY 10022 USA P 212 207 3252 Contact Default</p>	
BANQUETTE			
BQ-08	<p>MIDDLE BANQUETTE @PATIO DESCRIPTION: MIDDLE BANQUETTE PRODUCT NAME#: CUSTOM FINISH/MATERIAL: SF-10 PLASTER FRAME WITH UPHOLSTERED BACK AND SEAT DIMENSIONS: REFERS TO DRAWINGS FOR DIMENSIONS SEAT CUSHION STYLE: TIGHT BACK CUSHION STYLE: TIGHT CUSHION CONTENT: OUTDOOR USE - MEDIUM DENSITY FOAM CORE COM/COL FABRIC DETAIL: FB-11 SEAT AND BACK NOTES: PROVIDE MOCK UP AND FINISH SAMPLES TO ICRAVE FOR REVIEW AND APPROVAL</p>	<p>JAMIE STERN DESIGN 115 W 30th St, Suite 503 NY, NY 10001 USA Contact CAILI NIZAMIS cnizamis@jamiesterndesign.com</p>	
FB-11 attached to BQ-08	<p>OUTDOOR BANQUETTE FABRIC DESCRIPTION: OUTDOOR UPHOLSTERY PRODUCT NAME#: SCANDIKAT FINISH: SOIL & STAIN RELEASE FINISH COLOR: LIME CONTENT: SOLUTION DYED ACRYLIC - 100% WIDTH: 55"W REPEAT: V: 6.5" H: 2" RAILROAD: NO BACKING: ACRYLIC FIRE RATING: CAL 117 ABRASION: 10.000 MAINTENANCE: NOTES: PROVIDE SAMPLE TO ICRAVE FOR REVIEW AND APPROVAL</p>	<p>KRAVET 22 W 21ST STREET 11TH FLOOR NEW YORK, NY 10010 USA P 800-645-9068 Contact DARLENE DE LISE P 516-293-2000 X2359 F 516-293-9358 DARLENE.DELISE@KRAVET.COM</p>	
BQ-09	<p>HALF ROUND BANQUETTE @PATIO DESCRIPTION: HALF ROUND BANQUETTE PRODUCT NAME#: CUSTOM FINISH/MATERIAL: SF-10 PLASTER FRAME WITH UPHOLSTERED BACK AND SEAT DIMENSIONS: REFERS TO DRAWINGS FOR DIMENSIONS SEAT CUSHION STYLE: TIGHT BACK CUSHION STYLE: TIGHT CUSHION CONTENT: OUTDOOR USE - MEDIUM DENSITY FOAM CORE COM/COL FABRIC DETAIL: FB-11 SEAT AND BACK NOTES: PROVIDE MOCK UP AND FINISH SAMPLES TO ICRAVE FOR REVIEW AND APPROVAL</p>	<p>JAMIE STERN DESIGN 115 W 30th St, Suite 503 NY, NY 10001 USA Contact CAILI NIZAMIS cnizamis@jamiesterndesign.com</p>	
FB-11 attached to BQ-09	<p>OUTDOOR BANQUETTE FABRIC DESCRIPTION: OUTDOOR UPHOLSTERY PRODUCT NAME#: SCANDIKAT FINISH: SOIL & STAIN RELEASE FINISH COLOR: LIME CONTENT: SOLUTION DYED ACRYLIC - 100% WIDTH: 55"W REPEAT: V: 6.5" H: 2" RAILROAD: NO BACKING: ACRYLIC FIRE RATING: CAL 117 ABRASION: 10.000 MAINTENANCE: NOTES: PROVIDE SAMPLE TO ICRAVE FOR REVIEW AND APPROVAL</p>	<p>KRAVET 22 W 21ST STREET 11TH FLOOR NEW YORK, NY 10010 USA P 800-645-9068 Contact DARLENE DE LISE P 516-293-2000 X2359 F 516-293-9358 DARLENE.DELISE@KRAVET.COM</p>	
BQ-10	<p>SERIES HALF ROUND BANQUETTE @PATIO DESCRIPTION: SERIES HALF ROUND BANQUETTE PRODUCT NAME#: CUSTOM FINISH/MATERIAL: SF-10 PLASTER FRAME WITH UPHOLSTERED BACK AND SEAT DIMENSIONS: REFERS TO DRAWINGS FOR DIMENSIONS SEAT CUSHION STYLE: TIGHT BACK CUSHION STYLE: TIGHT CUSHION CONTENT: OUTDOOR USE - MEDIUM DENSITY FOAM CORE COM/COL FABRIC DETAIL: FB-11 SEAT AND BACK NOTES: PROVIDE MOCK UP AND FINISH SAMPLES TO ICRAVE FOR REVIEW AND APPROVAL</p>	<p>JAMIE STERN DESIGN 115 W 30th St, Suite 503 NY, NY 10001 USA Contact CAILI NIZAMIS cnizamis@jamiesterndesign.com</p>	

CONTROL #	DESCRIPTION	MFR / VENDOR	IMAGE
FB-11 attached to BQ-10	<p>OUTDOOR BANQUETTE FABRIC DESCRIPTION: OUTDOOR UPHOLSTERY PRODUCT NAME#: SCANDIKAT FINISH: SOIL & STAIN RELEASE FINISH COLOR: LIME CONTENT: SOLUTION DYED ACRYLIC - 100% WIDTH: 55"W REPEAT: V: 6.5" H: 2" RAILROAD: NO BACKING: ACRYLIC FIRE RATING: CAL 117 ABRASION: 10.000 MAINTENANCE: NOTES: PROVIDE SAMPLE TO ICRAVE FOR REVIEW AND APPROVAL</p>	<p>KRAVET 22 W 21ST STREET 11TH FLOOR NEW YORK, NY 10010 USA P 800-645-9068 Contact DARLENE DE LISE P 516-293-2000 X2359 F 516-293-9358 DARLENE.DELISE@KRAVET.COM</p>	
CHAIR			
CH-06	<p>OUTDOOR LOUNGE CHAIR DESCRIPTION: OUTDOOR LOUNGE CHAIR PRODUCT NAME#: ROLL CLUB CHAIR FINISH/MATERIAL: 094 INDIGO, 291 POROUSGREY, 298 CARIBBEAN, SEA HOLY DIMENSIONS: 68"W X 66"D X 33.8"H SEAT HEIGHT: 44" NOTES: MFR TO PROVIDE MOCK UP, DRAWINGS AND FINISH SAMPLES FOR REVIEW AND APPROVAL</p>	<p>KETTAL 147 MIRACLE MILE CORAL GABLES, FL 33134- USA P (786) 552-9002 F (786) 552-9010 Contact JENNIFER MARIN P 786.552.9002 jennifer.marin@kettal.es</p>	
CH-07	<p>OUTDOOR BAR STOOL DESCRIPTION: BAR STOOL PRODUCT NAME#: MALTA TEAK BAR STOOL FINISH/MATERIAL: NATURAL TEAK/CLAY DIMENSIONS: 22"W x 23"D x 37 1/2"H SEAT HEIGHT: 22-3/4" COM/COL FABRIC DETAIL: FB-12 FABRIC YARDAGE REQUIRED: NOTES: MFR TO PROVIDE MOCK UP, DRAWINGS AND FINISH SAMPLES FOR REVIEW AND APPROVAL</p>	<p>RESTORATION HARDWARE 9 NINTH AVENUE NEW YORK, NY 10014 USA P (212) 217-2210 Contact *MADELYN MACHADO MMACHADO@RH.COM</p>	
FB-12 attached to CH-07	<p>OUTDOOR BAR STOOL UPHOLSTERY DESCRIPTION: OUTDOOR UPHOLSTERY FABRIC PRODUCT NAME#: CANVAS FINISH: Standard Label: Finish COLOR: DOVE CONTENT: 100% SOLUTION DYED ACRYLIC, 98% UV PROTECTION WIDTH: 54" RAILROAD: YES BACKING: ACRYLIC FIRE RATING: CAL 117 ABRASION: 50,000 DOUBLE RUBS MAINTENANCE: NOTES: PROVIDE SAMPLE TO ICRAVE FOR REVIEW AND APPROVAL</p>	<p>RESTORATION HARDWARE 9 NINTH AVENUE NEW YORK, NY 10014 USA P (212) 217-2210 Contact *MADELYN MACHADO MMACHADO@RH.COM</p>	
CH-08	<p>OUTDOOR DINING CHAIR DESCRIPTION: OUTDOOR DINING CHAIR PRODUCT NAME#: SERENA TEAK FINISH/MATERIAL: TEAK, 4055 DIMENSIONS: 22.5"W X 23.3"D X 32.48"H SEAT HEIGHT: 17.32" FABRIC YARDAGE REQUIRED: NOTES: MFR TO PROVIDE MOCK UP, DRAWINGS AND FINISH SAMPLES FOR REVIEW AND APPROVAL</p>	<p>ANDREU WORLD 222 MERCHANDISE MART PLAZA SUITE 10-132 CHICAGO, IL 60654- USA P (212) 679-0300 Contact GREGORY BUJA P (212) 679-0300 GREGORY@PRIMASONSCHIK.COM</p>	
FB-13 attached to CH-08	<p>OUTDOOR DINING CHAIR ROPE DESCRIPTION: ROPE FABRICS PRODUCT NAME#: GRAPHITE GRAFITO COLOR: CIGR NOTES: PROVIDE SAMPLE TO ICRAVE FOR REVIEW AND APPROVAL</p>	<p>ANDREU WORLD 222 MERCHANDISE MART PLAZA SUITE 10-132 CHICAGO, IL 60654- USA P (212) 679-0300 Contact GREGORY BUJA P (212) 679-0300 GREGORY@PRIMASONSCHIK.COM</p>	
CH-09	<p>OUTDOOR DINING CHAIR @GARDEN DESCRIPTION: OUTDOOR DINING CHAIR PRODUCT NAME#: NIDO STACKABLE HNAD-WOVEN DINING ARM CHAIR FINISH/MATERIAL: ROPE-STAINELSS STEEL DIMENSIONS: 23.5" x 23.5" x 32.25" SEAT HEIGHT: 15.75" WEIGHT: 9KG COM/COL FABRIC DETAIL: FABRIC YARDAGE REQUIRED: 1.7YARD NOTES: MFR TO PROVIDE MOCK UP, DRAWINGS AND FINISH SAMPLES FOR REVIEW AND APPROVAL</p>	<p>EXPORMIM USA LLC 375 PARK AVENUE SUITE 2607 NEW YORK, NY 10152 ESP Contact MARIA GIL* P 212.204.8572 MARIA@EXPORMIM.COM</p>	
FB-14 attached to CH-09	<p>OUTDOOR STACKABLE CHAIR UPHOLSTERY DESCRIPTION: OUTDOOR ROPE PRODUCT NAME#: 515-SPK FINISH: ROPE COLOR: DARK ORANGE FIRE RATING: CAL 117 NOTES: PROVIDE SAMPLE TO ICRAVE FOR REVIEW AND APPROVAL</p>	<p>EXPORMIM USA LLC 375 PARK AVENUE SUITE 2607 NEW YORK, NY 10152 ESP Contact MARIA GIL* P 212.204.8572 MARIA@EXPORMIM.COM</p>	
FABRICS AND UPHOLSTERY			

CONTROL #	DESCRIPTION	MFR / VENDOR	IMAGE
FB-11	<p>OUTDOOR BANQUETTE FABRIC DESCRIPTION: OUTDOOR UPHOLSTERY PRODUCT NAME#: SCANDIKAT FINISH: SOIL & STAIN RELEASE FINISH COLOR: LIME CONTENT: SOLUTION DYED ACRYLIC - 100% WIDTH: 55"W REPEAT: V: 6.5" H: 2" RAILROAD: NO BACKING: ACRYLIC FIRE RATING: CAL 117 ABRASION: 10.000 MAINTENANCE: NOTES: PROVIDE SAMPLE TO ICRAVE FOR REVIEW AND APPROVAL</p>	<p>KRAVET 22 W 21ST STREET 11TH FLOOR NEW YORK, NY 10010 USA P 800-645-9068 Contact DARLENE DE LISE P 516-293-2000 X2359 F 516-293-9358 DARLENE.DELISE@KRAVET.COM</p>	
FB-12	<p>OUTDOOR BAR STOOL UPHOLSTERY DESCRIPTION: OUTDOOR UPHOLSTERY FABRIC PRODUCT NAME#: CANVAS FINISH: Standard Label: Finish COLOR: DOVE CONTENT: 100% SOLUTION DYED ACRYLIC, 98% UV PROTECTION WIDTH: 54" RAILROAD: YES BACKING: ACRYLIC FIRE RATING: CAL 117 ABRASION: 50,000 DOUBLE RUBS MAINTENANCE: NOTES: PROVIDE SAMPLE TO ICRAVE FOR REVIEW AND APPROVAL</p>	<p>RESTORATION HARDWARE 9 NINTH AVENUE NEW YORK, NY 10014 USA P (212) 217-2210 Contact *MADELYN MACHADO MMACHADO@RH.COM</p>	
FB-13	<p>OUTDOOR DINING CHIAR ROPE DESCRIPTION: ROPE FABRICS PRODUCT NAME#: GRAPHITE GRAFITO COLOR: CIGR NOTES: PROVIDE SAMPLE TO ICRAVE FOR REVIEW AND APPROVAL</p>	<p>ANDREU WORLD 222 MERCHANDISE MART PLAZA SUITE 10-132 CHICAGO, IL 60654- USA P (212) 679-0300 Contact GREGORY BUJA P (212) 679-0300 GREGORY@PRIMASONSYMCHIK.COM</p>	
FB-14	<p>OUTDOOR STACKABLE CHAIR UPHOLSTERY DESCRIPTION: OUTDOOR ROPE PRODUCT NAME#: 515-SPK FINISH: ROPE COLOR: DARK ORANGE FIRE RATING: CAL 117 NOTES: PROVIDE SAMPLE TO ICRAVE FOR REVIEW AND APPROVAL</p>	<p>EXPORMIM USA LLC 375 PARK AVENUE SUITE 2607 NEW YORK, NY 10152 ESP Contact MARIA GIL* P 212.204.8572 MARIA@EXPORMIM.COM</p>	
TABLE			
TB-08	<p>OUTDOOR LARGE DINING TABLE @GARDEN DESCRIPTION: OUTDOOR DINING TABLE PRODUCT NAME#: ATRIVM OUTDOOR RECTANGULAR DINING TABLE MANEL MOLINA.2019 DIMENSIONS: 180CM (70") X 98CM (38") X 74CM (29") TABLE TOP FINISH: ALUMINUM TABLE BASE: ALUMINUM NOTES: MFR TO PROVIDE MOCK UP, DRAWINGS AND FINISH SAMPLES FOR REVIEW AND APPROVAL</p>	<p>EXPORMIM USA LLC 375 PARK AVENUE SUITE 2607 NEW YORK, NY 10152 ESP Contact MARIA GIL* P 212.204.8572 MARIA@EXPORMIM.COM</p>	
TB-09	<p>OUTDOOR LOUNGE TABLE DESCRIPTION: LOUNGE TABLE PRODUCT NAME#: ROLL SIDE TABLE D60 DIMENSIONS: 23.6"D X 26.9"H TABLE TOP FINISH: 678 BONE TABLE BASE: 087 TERRA ROSSA NOTES: MFR TO PROVIDE MOCK UP, DRAWINGS AND FINISH SAMPLES FOR REVIEW AND APPROVAL</p>	<p>KETTAL 147 MIRACLE MILE CORAL GABLES, FL 33134- USA P (786) 552-9002 F (786) 552-9010 Contact THOMAS DOWNES THOMAS.DOWNES@KETTAL.ES</p>	
TB-10	<p>OUTDOOR DINING TABLE DESCRIPTION: OUTDOOR DINING TABLE PRODUCT NAME#: CUSTOM DIMENSIONS: 46"W X 39"D X 30"H TABLE TOP FINISH: WHITE ENGINEERED STONE TABLE BASE: COLUMN TYPE TEAK BASE NOTES: MFR TO PROVIDE MOCK UP, DRAWINGS AND FINISH SAMPLES FOR REVIEW AND APPROVAL</p>	<p>JOHN CELLI CUSTOM FURNITURE DESIGNS, INC. 35 MASSITOA ROAD YONKERS, NY 10710 USA P 212-213-6999 F 212-684-2999 Contact LINA ZOLOTUSHKO P 212-213-6999 EXT.12 C 732-740-8876 LINA@JOHNCELLI.COM</p>	
TB-11	<p>OUTDOOR RECTANGULAR DINING TABLE DESCRIPTION: DINING TABLE PRODUCT NAME#: NET DINING TABLE DIMENSIONS: 18.2"W X 18.2"D X 30"H TABLE TOP FINISH: TEAK VEINED WOOD EDGE DETAIL: ROUND EDGE TABLE BASE: POWDER COATED BLACK METAL NOTES: MFR TO PROVIDE MOCK UP, DRAWINGS AND FINISH SAMPLES FOR REVIEW AND APPROVAL</p>	<p>KETTAL 147 MIRACLE MILE CORAL GABLES, FL 33134- USA P (786) 552-9002 F (786) 552-9010 Contact JENNIFER MARIN P 786.552.9002 jennifer.marin@kettal.es</p>	

PROJECT NAME: ZUZU RESTAURANT

OUTDOOR MEDIUM PLANTER

PROJECT NUMBER: 22-037

ISSUE DATE: 11 OCT 2022

REVISION DATE:

MANUFACTURER:

DISTRIBUTOR: VONDOM LLC
D&D BUILDING 979, 3RD AVE
SUITE 1532
NEW YORK, NY 10022, United States
P: 212 207 3252
www.vondom.com

CONTACT:

CONTACT:

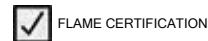
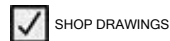
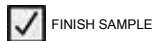
TOTAL QTY: 6
ITEM COST: \$0.00

LEAD TIME:
TOTAL COST: \$0.00

DESCRIPTION OUTDOOR PLANTER
PRODUCT NAME/# GATSBY PLANTERS ø40x80
DIMENSIONS 15 3/4" DIAMETER X 31 1/2" HEIGHT
FINISH/MATERIAL POLYETHYLENE
COLOR BASIC. ECRU 4003
NOTES PROVIDE SAMPLE TO ICRAVE FOR
REVIEW AND APPROVAL



SUBMITTALS:



AREAS:

PATIO
- LOUNGE AREA

QTY PER AREA:

6
6

SPECIAL INSTRUCTIONS:

1. PROTOTYPES ARE REQUIRED FOR FINAL APPROVAL OF ALL CUSTOM FURNITURE REGARDLESS OF QUANTITY. APPROVAL OF SHOP DRAWINGS ARE FOR PROTOTYPE FABRICATION ONLY. SHOP DRAWINGS ARE APPROVED BY ICRAVE FOR DESIGN INTENT AND SCALE ONLY. MANUFACTURER IS RESPONSIBLE FOR STRUCTURAL PERFORMANCE, DURABILITY AND QUALITY OF MATERIALS.

PROJECT NAME: ZUZU RESTAURANT

OUTDOOR MEDIUM PLANTER

PROJECT NUMBER: 22-037

-
2. FURNITURE IS FOR CONTRACT USE AND IS TO BE FABRICATED AND TO PERFORM ACCORDINGLY. FURNITURE TO BE BUILT, FINISHED AND SEALED AS REQUIRED FOR HIGH TRAFFIC COMMERCIAL USE.
 3. FOR ANY ITEM SUPPLIED BY A VENDOR OTHER THAN WHAT IS SPECIFIED ABOVE, SUBMITTAL OF SPECIFICATIONS, SHOP DRAWINGS, FINISH SAMPLES, AND/OR PROTOTYPE IS REQUIRED FOR REVIEW AND WRITTEN APPROVAL BY ICRAVE AND THE CLIENT
 4. ALL FURNITURE AND MATERIALS TO BE FLAMEPROOF AS REQUIRED BY LOCAL, STATE AND FEDERAL CODES, INCLUDING STANDARD METHODS OF TESTS AND CLASSIFICATION FOR CIGARETTE IGNITION.
 5. ALL FINISH SAMPLES TO BE SUBMITTED FOR FINAL APPROVAL PRIOR TO FABRICATION.
 6. ALL FURNITURE WITH LEGS TO HAVE HEAVY DUTY CONCEALED GLIDES AS REQUIRED. DIAMETER TO BE SIZED PER LEG DIMENSIONS (AS LARGE AS POSSIBLE) WITHOUT BEING VISIBLE. GLIDE COLOR TO MATCH LEG FINISH. GLIDES TO BE COMPATIBLE WITH FLOOR FINISH TO AVOID DAMAGE TO FLOOR. MANUFACTURER TO COORDINATE WITH GC AND DESIGNER PRIOR TO FABRICATION.
 7. WOOD JOINTS TO BE MORTIS AND TENON RATHER THAN DOWEL PINS WHEN POSSIBLE.
 8. ALL SOLID WOOD, MDF AND PLYWOOD USED SHALL BE KILN DRIED TO MOISTURE CONTENTS (MC) OF 6-8% AND SHALL BE ACCLIMATIZED IN THE PLANT FOR AT LEAST 2 WEEKS PRIOR TO MILLING
 9. EXTERIOR, INTERIOR AND DECORATIVE HARDWARE (HINGES, BOLTS, SCREWS, ANCHORS, ETC) TO BE NON-CORROSIVE. ALL EXPOSED HARDWARE TO BE NEATLY MITERED, SANDED, AND SPLINTER FREE.
 10. ALL FACE VENEERS SHALL BE MATCHED FOR COLOR AND GRAIN TO PRESENT A UNIFORM APPEARANCE.
 11. ALL CASEGOOD PIECES TO BE CONSTRUCTED PROPERLY TO ENSURE THAT THEY WILL NOT TIP OVER.
 12. REFER TO DRAWINGS FOR EXACT LOCATION AND/OR MOUNTING HEIGHTS AND MANNER OF INSTALLATION. IN THE EVENT OF A DISCREPANCY BETWEEN DRAWINGS AND SPECIFICATIONS, PLEASE CONTACT ICRAVE IMMEDIATELY FOR WRITTEN CLARIFICATION.

PROJECT NAME: ZUZU RESTAURANT

MIDDLE BANQUETTE @PATIO

PROJECT NUMBER: 22-037

ISSUE DATE: 11 OCT 2022

REVISION DATE:

MANUFACTURER: JAMIE STERN DESIGN
115 W 30th St, Suite 503
NY, NY 10001, United States

DISTRIBUTOR:

CONTACT: CAILI NIZAMIS
cnizamis@jamiesterndesign.com

CONTACT:

TOTAL QTY: 1
ITEM COST: \$0.00

LEAD TIME:
TOTAL COST: \$0.00

DESCRIPTION	MIDDLE BANQUETTE
PRODUCT NAME/#	CUSTOM
FINISH/MATERIAL	SF-10 PLASTER FRAME WITH UPHOLSTERED BACK AND SEAT
DIMENSIONS	REFERS TO DRAWINGS FOR DIMENSIONS
SEAT CUSHION STYLE	TIGHT
BACK CUSHION STYLE	TIGHT
CUSHION CONTENT	OUTDOOR USE - MEDIUM DENSITY FOAM CORE
COM/COL FABRIC DETAIL	FB-11 SEAT AND BACK
NOTES	PROVIDE MOCK UP AND FINISH SAMPLES TO ICRAVE FOR REVIEW AND APPROVAL



SUBMITTALS:

AREAS:	QTY PER AREA:
2ND FLOOR	0
- LOUNGE 2	0
AREAS:	QTY PER AREA:
PATIO	1
- LOUNGE AREA	1

SPECIAL INSTRUCTIONS:

PROJECT NAME: ZUZU RESTAURANT

MIDDLE BANQUETTE @PATIO

PROJECT NUMBER: 22-037

-
1. PROTOTYPES ARE REQUIRED FOR FINAL APPROVAL OF ALL CUSTOM FURNITURE REGARDLESS OF QUANTITY. APPROVAL OF SHOP DRAWINGS ARE FOR PROTOTYPE FABRICATION ONLY. SHOP DRAWINGS ARE APPROVED BY ICRAVE FOR DESIGN INTENT AND SCALE ONLY. MANUFACTURER IS RESPONSIBLE FOR STRUCTURAL PERFORMANCE, DURABILITY AND QUALITY OF MATERIALS.
 2. FURNITURE IS FOR CONTRACT USE AND IS TO BE FABRICATED AND TO PERFORM ACCORDINGLY. FURNITURE TO BE BUILT, FINISHED AND SEALED AS REQUIRED FOR HIGH TRAFFIC COMMERCIAL USE.
 3. FOR ANY ITEM SUPPLIED BY A VENDOR OTHER THAN WHAT IS SPECIFIED ABOVE, SUBMITTAL OF SPECIFICATIONS, SHOP DRAWINGS, FINISH SAMPLES, AND/OR PROTOTYPE IS REQUIRED FOR REVIEW AND WRITTEN APPROVAL BY ICRAVE AND THE CLIENT
 4. ALL FURNITURE AND MATERIALS TO BE FLAMEPROOF AS REQUIRED BY LOCAL, STATE AND FEDERAL CODES, INCLUDING STANDARD METHODS OF TESTS AND CLASSIFICATION FOR CIGARETTE IGNITION.
 5. ALL FINISH SAMPLES TO BE SUBMITTED FOR FINAL APPROVAL PRIOR TO FABRICATION.
 6. ALL FURNITURE WITH LEGS TO HAVE HEAVY DUTY CONCEALED GLIDES AS REQUIRED. DIAMETER TO BE SIZED PER LEG DIMENSIONS (AS LARGE AS POSSIBLE) WITHOUT BEING VISIBLE. GLIDE COLOR TO MATCH LEG FINISH. GLIDES TO BE COMPATIBLE WITH FLOOR FINISH TO AVOID DAMAGE TO FLOOR. MANUFACTURER TO COORDINATE WITH GC AND DESIGNER PRIOR TO FABRICATION.
 7. WOOD JOINTS TO BE MORTIS AND TENON RATHER THAN DOWEL PINS WHEN POSSIBLE.
 8. ALL SOLID WOOD, MDF AND PLYWOOD USED SHALL BE KILN DRIED TO MOISTURE CONTENTS (MC) OF 6-8% AND SHALL BE ACCLIMATIZED IN THE PLANT FOR AT LEAST 2 WEEKS PRIOR TO MILLING
 9. EXTERIOR, INTERIOR AND DECORATIVE HARDWARE (HINGES, BOLTS, SCREWS, ANCHORS, ETC) TO BE NON-CORROSIVE. ALL EXPOSED HARDWARE TO BE NEATLY MITERED, SANDED, AND SPLINTER FREE.
 10. ALL FACE VENEERS SHALL BE MATCHED FOR COLOR AND GRAIN TO PRESENT A UNIFORM APPEARANCE.
 11. STAIN TREATMENT IS REQUIRED ON ALL UPHOLSTERED ITEMS. UPHOLSTERY FABRIC MUST HAVE A NANO-TEX STAIN WITH DURABLOCK FINISH OR SIMILAR AS RECOMMENDED BY THE MANUFACTURER TO BE INHERENT OF THESE QUALITIES. ALL UPHOLSTERY TO BE BACKED AND/OR TREATED TO BE RESISTANT TO PUNCTURES. ALL FABRIC SPECIFIED MUST RECEIVE PRE-SHRINKING, NON-FADING AND NON-CROCKING TREATMENT.
 12. ALL FABRICS TO RECEIVE FIRE AND FLAME TREATMENT TO MEET ALL LOCAL, STATE AND FEDERAL REQUIREMENTS. ALL FIRE AND FLAME RETARDANTS ARE TO BE WITH ONLY NON-SALINE SOLUTION TO PREVENT CORROSION AND MILDEW OF FABRIC.
 13. ALL UPHOLSTERED CUSHIONS MUST HAVE SECURITY CLIPS, BE SEWN, OR HEAVY DUTY VELCRO-ED IN PLACE.
 14. UPHOLSTERY PATTERN TO BE MATCHED AT SEAMS. UPHOLSTERY MUST BE SMOOTH AND EVEN WITH NO LUMP OR IRREGULARITIES. FABRIC TO BE FIRST RUN GOODS FROM FULL BOLTS AND FROM SAME DYE LOT.
 15. ZIPPERS TO BE NON-CORROSIVE RUST PROOF, HEAVY DUTY COMMERCIAL GRADE, CONCEALED AND FINISHED TO MATCH ADJACENT FABRIC.
 16. SEAT CUSHIONS TO BE 1.8 LB. DENSITY FOAM WITH A FIRMNESS LEVEL OF 24/21. FOAM SHOULD HAVE DOUBLE LAYER OF DACRON WITH MUSLIN COVER. DACRON SHOULD BE GLUED TO FOAM. FOAM CORE AND WRAP MUST PASS CALIFORNIA BULLETIN 117 OR WHICHEVER IS THE MOST STRINGENT FOR THE INSTALLATION LOCATION.
 17. AT MINIMUM, SEAT SUSPENSION TO HAVE NO-SAG SPRINGS, 8-GAUGE. TIGHT BACKS ARE 11-GAUGE.
 18. MANUFACTURER TO VERIFY ALL C.O.M AND C.O.L. QUANTITY REQUIREMENTS PRIOR TO FABRICATION
 19. MANUFACTURER TO COORDINATE WITH GC AS REQUIRED. MANUFACTURER MUST VERIFY ALL MEASUREMENT IN FIELD AND PROVIDE COMPLETE SHOP DRAWINGS TO DESIGNER, GC AND OWNER FOR APPROVAL PRIOR TO FABRICATION.
 20. MANUFACTURER TO ADVISE OF ALL APPROPRIATE ADHESIVE AND INSTALLATION METHODS, PROVIDE WRITTEN INSTRUCTIONS AS WELL AS ALL REQUIRED HARDWARE WITH SHIPMENT OF GOODS. MANUFACTURER TO SUBMIT A COPY OF INSTRUCTIONS TO PURCHASING AGENT.
 21. REFER TO DRAWINGS FOR EXACT LOCATION AND/OR MOUNTING HEIGHTS AND MANNER OF INSTALLATION. IN THE EVENT OF A DISCREPANCY BETWEEN DRAWINGS AND SPECIFICATIONS, PLEASE CONTACT ICRAVE IMMEDIATELY FOR WRITTEN CLARIFICATION.
 22. PURCHASER TO CONFIRM WARRANTIES, AND SUBMIT PERFORMANCE CERTIFICATES AS REQUIRED.

PROJECT NAME: ZUZU RESTAURANT
 PROJECT NUMBER: 22-037

HALF ROUND BANQUETTE @PATIO

ISSUE DATE: 11 OCT 2022
 REVISION DATE:

MANUFACTURER: JAMIE STERN DESIGN
 115 W 30th St, Suite 503
 NY, NY 10001, United States

DISTRIBUTOR:

CONTACT: CAILI NIZAMIS
 cnizamis@jamiesterndesign.com

CONTACT:

TOTAL QTY:	1	LEAD TIME:	
ITEM COST:	\$0.00	TOTAL COST:	\$0.00

DESCRIPTION	HALF ROUND BANQUETTE
PRODUCT NAME/#	CUSTOM
FINISH/MATERIAL	SF-10 PLASTER FRAME WITH UPHOLSTERED BACK AND SEAT
DIMENSIONS	REFERS TO DRAWINGS FOR DIMENSIONS
SEAT CUSHION STYLE	TIGHT
BACK CUSHION STYLE	TIGHT
CUSHION CONTENT	OUTDOOR USE - MEDIUM DENSITY FOAM CORE
COM/COL FABRIC DETAIL	FB-11 SEAT AND BACK
NOTES	PROVIDE MOCK UP AND FINISH SAMPLES TO ICRAVE FOR REVIEW AND APPROVAL



SUBMITTALS:

AREAS:	QTY PER AREA:
2ND FLOOR	0
- LOUNGE 2	0
AREAS:	QTY PER AREA:
PATIO	1
- LOUNGE AREA	1

SPECIAL INSTRUCTIONS:

PROJECT NAME: ZUZU RESTAURANT

HALF ROUND BANQUETTE @PATIO

PROJECT NUMBER: 22-037

-
1. PROTOTYPES ARE REQUIRED FOR FINAL APPROVAL OF ALL CUSTOM FURNITURE REGARDLESS OF QUANTITY. APPROVAL OF SHOP DRAWINGS ARE FOR PROTOTYPE FABRICATION ONLY. SHOP DRAWINGS ARE APPROVED BY ICRAVE FOR DESIGN INTENT AND SCALE ONLY. MANUFACTURER IS RESPONSIBLE FOR STRUCTURAL PERFORMANCE, DURABILITY AND QUALITY OF MATERIALS.
 2. FURNITURE IS FOR CONTRACT USE AND IS TO BE FABRICATED AND TO PERFORM ACCORDINGLY. FURNITURE TO BE BUILT, FINISHED AND SEALED AS REQUIRED FOR HIGH TRAFFIC COMMERCIAL USE.
 3. FOR ANY ITEM SUPPLIED BY A VENDOR OTHER THAN WHAT IS SPECIFIED ABOVE, SUBMITTAL OF SPECIFICATIONS, SHOP DRAWINGS, FINISH SAMPLES, AND/OR PROTOTYPE IS REQUIRED FOR REVIEW AND WRITTEN APPROVAL BY ICRAVE AND THE CLIENT
 4. ALL FURNITURE AND MATERIALS TO BE FLAMEPROOF AS REQUIRED BY LOCAL, STATE AND FEDERAL CODES, INCLUDING STANDARD METHODS OF TESTS AND CLASSIFICATION FOR CIGARETTE IGNITION.
 5. ALL FINISH SAMPLES TO BE SUBMITTED FOR FINAL APPROVAL PRIOR TO FABRICATION.
 6. ALL FURNITURE WITH LEGS TO HAVE HEAVY DUTY CONCEALED GLIDES AS REQUIRED. DIAMETER TO BE SIZED PER LEG DIMENSIONS (AS LARGE AS POSSIBLE) WITHOUT BEING VISIBLE. GLIDE COLOR TO MATCH LEG FINISH. GLIDES TO BE COMPATIBLE WITH FLOOR FINISH TO AVOID DAMAGE TO FLOOR. MANUFACTURER TO COORDINATE WITH GC AND DESIGNER PRIOR TO FABRICATION.
 7. WOOD JOINTS TO BE MORTIS AND TENON RATHER THAN DOWEL PINS WHEN POSSIBLE.
 8. ALL SOLID WOOD, MDF AND PLYWOOD USED SHALL BE KILN DRIED TO MOISTURE CONTENTS (MC) OF 6-8% AND SHALL BE ACCLIMATIZED IN THE PLANT FOR AT LEAST 2 WEEKS PRIOR TO MILLING
 9. EXTERIOR, INTERIOR AND DECORATIVE HARDWARE (HINGES, BOLTS, SCREWS, ANCHORS, ETC) TO BE NON-CORROSIVE. ALL EXPOSED HARDWARE TO BE NEATLY MITERED, SANDED, AND SPLINTER FREE.
 10. ALL FACE VENEERS SHALL BE MATCHED FOR COLOR AND GRAIN TO PRESENT A UNIFORM APPEARANCE.
 11. STAIN TREATMENT IS REQUIRED ON ALL UPHOLSTERED ITEMS. UPHOLSTERY FABRIC MUST HAVE A NANO-TEX STAIN WITH DURABLOCK FINISH OR SIMILAR AS RECOMMENDED BY THE MANUFACTURER TO BE INHERENT OF THESE QUALITIES. ALL UPHOLSTERY TO BE BACKED AND/OR TREATED TO BE RESISTANT TO PUNCTURES. ALL FABRIC SPECIFIED MUST RECEIVE PRE-SHRINKING, NON-FADING AND NON-CROCKING TREATMENT.
 12. ALL FABRICS TO RECEIVE FIRE AND FLAME TREATMENT TO MEET ALL LOCAL, STATE AND FEDERAL REQUIREMENTS. ALL FIRE AND FLAME RETARDANTS ARE TO BE WITH ONLY NON-SALINE SOLUTION TO PREVENT CORROSION AND MILDEW OF FABRIC.
 13. ALL UPHOLSTERED CUSHIONS MUST HAVE SECURITY CLIPS, BE SEWN, OR HEAVY DUTY VELCRO-ED IN PLACE.
 14. UPHOLSTERY PATTERN TO BE MATCHED AT SEAMS. UPHOLSTERY MUST BE SMOOTH AND EVEN WITH NO LUMP OR IRREGULARITIES. FABRIC TO BE FIRST RUN GOODS FROM FULL BOLTS AND FROM SAME DYE LOT.
 15. ZIPPERS TO BE NON-CORROSIVE RUST PROOF, HEAVY DUTY COMMERCIAL GRADE, CONCEALED AND FINISHED TO MATCH ADJACENT FABRIC.
 16. SEAT CUSHIONS TO BE 1.8 LB. DENSITY FOAM WITH A FIRMNESS LEVEL OF 24/21. FOAM SHOULD HAVE DOUBLE LAYER OF DACRON WITH MUSLIN COVER. DACRON SHOULD BE GLUED TO FOAM. FOAM CORE AND WRAP MUST PASS CALIFORNIA BULLETIN 117 OR WHICHEVER IS THE MOST STRINGENT FOR THE INSTALLATION LOCATION.
 17. AT MINIMUM, SEAT SUSPENSION TO HAVE NO-SAG SPRINGS, 8-GAUGE. TIGHT BACKS ARE 11-GAUGE.
 18. MANUFACTURER TO VERIFY ALL C.O.M AND C.O.L. QUANTITY REQUIREMENTS PRIOR TO FABRICATION
 19. MANUFACTURER TO COORDINATE WITH GC AS REQUIRED. MANUFACTURER MUST VERIFY ALL MEASUREMENT IN FIELD AND PROVIDE COMPLETE SHOP DRAWINGS TO DESIGNER, GC AND OWNER FOR APPROVAL PRIOR TO FABRICATION.
 20. MANUFACTURER TO ADVISE OF ALL APPROPRIATE ADHESIVE AND INSTALLATION METHODS, PROVIDE WRITTEN INSTRUCTIONS AS WELL AS ALL REQUIRED HARDWARE WITH SHIPMENT OF GOODS. MANUFACTURER TO SUBMIT A COPY OF INSTRUCTIONS TO PURCHASING AGENT.
 21. REFER TO DRAWINGS FOR EXACT LOCATION AND/OR MOUNTING HEIGHTS AND MANNER OF INSTALLATION. IN THE EVENT OF A DISCREPANCY BETWEEN DRAWINGS AND SPECIFICATIONS, PLEASE CONTACT ICRAVE IMMEDIATELY FOR WRITTEN CLARIFICATION.
 22. PURCHASER TO CONFIRM WARRANTIES, AND SUBMIT PERFORMANCE CERTIFICATES AS REQUIRED.

PROJECT NAME: ZUZU RESTAURANT

SERIES HALF ROUND BANQUETTE
@PATIO

PROJECT NUMBER: 22-037

ISSUE DATE: 11 OCT 2022

REVISION DATE:

MANUFACTURER: JAMIE STERN DESIGN
115 W 30th St, Suite 503
NY, NY 10001, United States

DISTRIBUTOR:

CONTACT: CAILI NIZAMIS
cnizamis@jamiesterndesign.com

CONTACT:

TOTAL QTY: 1
ITEM COST: \$0.00

LEAD TIME:
TOTAL COST: \$0.00

DESCRIPTION	SERIES HALF ROUND BANQUETTE
PRODUCT NAME/#	CUSTOM
FINISH/MATERIAL	SF-10 PLASTER FRAME WITH UPHOLSTERED BACK AND SEAT
DIMENSIONS	REFERS TO DRAWINGS FOR DIMENSIONS
SEAT CUSHION STYLE	TIGHT
BACK CUSHION STYLE	TIGHT
CUSHION CONTENT	OUTDOOR USE - MEDIUM DENSITY FOAM CORE
COM/COL FABRIC DETAIL	FB-11 SEAT AND BACK
NOTES	PROVIDE MOCK UP AND FINISH SAMPLES TO ICRAVE FOR REVIEW AND APPROVAL



SUBMITTALS:

AREAS:	QTY PER AREA:
2ND FLOOR	0
- LOUNGE 2	0
AREAS:	QTY PER AREA:
PATIO	1
- LOUNGE AREA	1

SPECIAL INSTRUCTIONS:

PROJECT NAME: ZUZU RESTAURANT

SERIES HALF ROUND BANQUETTE
@PATIO

PROJECT NUMBER: 22-037

1. PROTOTYPES ARE REQUIRED FOR FINAL APPROVAL OF ALL CUSTOM FURNITURE REGARDLESS OF QUANTITY. APPROVAL OF SHOP DRAWINGS ARE FOR PROTOTYPE FABRICATION ONLY. SHOP DRAWINGS ARE APPROVED BY ICRAVE FOR DESIGN INTENT AND SCALE ONLY. MANUFACTURER IS RESPONSIBLE FOR STRUCTURAL PERFORMANCE, DURABILITY AND QUALITY OF MATERIALS.
2. FURNITURE IS FOR CONTRACT USE AND IS TO BE FABRICATED AND TO PERFORM ACCORDINGLY. FURNITURE TO BE BUILT, FINISHED AND SEALED AS REQUIRED FOR HIGH TRAFFIC COMMERCIAL USE.
3. FOR ANY ITEM SUPPLIED BY A VENDOR OTHER THAN WHAT IS SPECIFIED ABOVE, SUBMITTAL OF SPECIFICATIONS, SHOP DRAWINGS, FINISH SAMPLES, AND/OR PROTOTYPE IS REQUIRED FOR REVIEW AND WRITTEN APPROVAL BY ICRAVE AND THE CLIENT
4. ALL FURNITURE AND MATERIALS TO BE FLAMEPROOF AS REQUIRED BY LOCAL, STATE AND FEDERAL CODES, INCLUDING STANDARD METHODS OF TESTS AND CLASSIFICATION FOR CIGARETTE IGNITION.
5. ALL FINISH SAMPLES TO BE SUBMITTED FOR FINAL APPROVAL PRIOR TO FABRICATION.
6. ALL FURNITURE WITH LEGS TO HAVE HEAVY DUTY CONCEALED GLIDES AS REQUIRED. DIAMETER TO BE SIZED PER LEG DIMENSIONS (AS LARGE AS POSSIBLE) WITHOUT BEING VISIBLE. GLIDE COLOR TO MATCH LEG FINISH. GLIDES TO BE COMPATIBLE WITH FLOOR FINISH TO AVOID DAMAGE TO FLOOR. MANUFACTURER TO COORDINATE WITH GC AND DESIGNER PRIOR TO FABRICATION.
7. WOOD JOINTS TO BE MORTIS AND TENON RATHER THAN DOWEL PINS WHEN POSSIBLE.
8. ALL SOLID WOOD, MDF AND PLYWOOD USED SHALL BE KILN DRIED TO MOISTURE CONTENTS (MC) OF 6-8% AND SHALL BE ACCLIMATIZED IN THE PLANT FOR AT LEAST 2 WEEKS PRIOR TO MILLING
9. EXTERIOR, INTERIOR AND DECORATIVE HARDWARE (HINGES, BOLTS, SCREWS, ANCHORS, ETC) TO BE NON-CORROSIVE. ALL EXPOSED HARDWARE TO BE NEATLY MITERED, SANDED, AND SPLINTER FREE.
10. ALL FACE VENEERS SHALL BE MATCHED FOR COLOR AND GRAIN TO PRESENT A UNIFORM APPEARANCE.
11. STAIN TREATMENT IS REQUIRED ON ALL UPHOLSTERED ITEMS. UPHOLSTERY FABRIC MUST HAVE A NANO-TEX STAIN WITH DURABLOCK FINISH OR SIMILAR AS RECOMMENDED BY THE MANUFACTURER TO BE INHERENT OF THESE QUALITIES. ALL UPHOLSTERY TO BE BACKED AND/OR TREATED TO BE RESISTANT TO PUNCTURES. ALL FABRIC SPECIFIED MUST RECEIVE PRE-SHRINKING, NON-FADING AND NON-CROCKING TREATMENT.
12. ALL FABRICS TO RECEIVE FIRE AND FLAME TREATMENT TO MEET ALL LOCAL, STATE AND FEDERAL REQUIREMENTS. ALL FIRE AND FLAME RETARDANTS ARE TO BE WITH ONLY NON-SALINE SOLUTION TO PREVENT CORROSION AND MILDEW OF FABRIC.
13. ALL UPHOLSTERED CUSHIONS MUST HAVE SECURITY CLIPS, BE SEWN, OR HEAVY DUTY VELCRO-ED IN PLACE.
14. UPHOLSTERY PATTERN TO BE MATCHED AT SEAMS. UPHOLSTERY MUST BE SMOOTH AND EVEN WITH NO LUMP OR IRREGULARITIES. FABRIC TO BE FIRST RUN GOODS FROM FULL BOLTS AND FROM SAME DYE LOT.
15. ZIPPERS TO BE NON-CORROSIVE RUST PROOF, HEAVY DUTY COMMERCIAL GRADE, CONCEALED AND FINISHED TO MATCH ADJACENT FABRIC.
16. SEAT CUSHIONS TO BE 1.8 LB. DENSITY FOAM WITH A FIRMNESS LEVEL OF 24/21. FOAM SHOULD HAVE DOUBLE LAYER OF DACRON WITH MUSLIN COVER. DACRON SHOULD BE GLUED TO FOAM. FOAM CORE AND WRAP MUST PASS CALIFORNIA BULLETIN 117 OR WHICHEVER IS THE MOST STRINGENT FOR THE INSTALLATION LOCATION.
17. AT MINIMUM, SEAT SUSPENSION TO HAVE NO-SAG SPRINGS, 8-GAUGE. TIGHT BACKS ARE 11-GAUGE.
18. MANUFACTURER TO VERIFY ALL C.O.M AND C.O.L. QUANTITY REQUIREMENTS PRIOR TO FABRICATION
19. MANUFACTURER TO COORDINATE WITH GC AS REQUIRED. MANUFACTURER MUST VERIFY ALL MEASUREMENT IN FIELD AND PROVIDE COMPLETE SHOP DRAWINGS TO DESIGNER, GC AND OWNER FOR APPROVAL PRIOR TO FABRICATION.
20. MANUFACTURER TO ADVISE OF ALL APPROPRIATE ADHESIVE AND INSTALLATION METHODS, PROVIDE WRITTEN INSTRUCTIONS AS WELL AS ALL REQUIRED HARDWARE WITH SHIPMENT OF GOODS. MANUFACTURER TO SUBMIT A COPY OF INSTRUCTIONS TO PURCHASING AGENT.
21. REFER TO DRAWINGS FOR EXACT LOCATION AND/OR MOUNTING HEIGHTS AND MANNER OF INSTALLATION. IN THE EVENT OF A DISCREPANCY BETWEEN DRAWINGS AND SPECIFICATIONS, PLEASE CONTACT ICRAVE IMMEDIATELY FOR WRITTEN CLARIFICATION.
22. PURCHASER TO CONFIRM WARRANTIES, AND SUBMIT PERFORMANCE CERTIFICATES AS REQUIRED.

PROJECT NAME: ZUZU RESTAURANT

OUTDOOR LOUNGE CHAIR

PROJECT NUMBER: 22-037

ISSUE DATE: 11 OCT 2022

REVISION DATE:

MANUFACTURER: KETTAL
 147 MIRACLE MILE
 CORAL GABLES, FL 33134-, United States
 P: (786) 552-9002 F: (786) 552-9010
 WWW.KETTALGROUP.COM

DISTRIBUTOR:

CONTACT: JENNIFER MARIN
 P: 786.552.9002
 jennifer.marin@kettal.es

CONTACT:

TOTAL QTY: 12

LEAD TIME:

ITEM COST: \$0.00

TOTAL COST: \$0.00

DESCRIPTION: OUTDOOR LOUNGE CHAIR
 PRODUCT NAME/#: ROLL CLUB CHAIR
 FINISH/MATERIAL: 094 INDIGO, 291 POROUSGREY, 298 CARIBBEAN, SEA HOLY
 DIMENSIONS: 68"W X 66"D X 33.8"H
 SEAT HEIGHT: 44"
 NOTES: MFR TO PROVIDE MOCK UP, DRAWINGS AND FINISH SAMPLES FOR REVIEW AND APPROVAL



SUBMITTALS:

- FINISH SAMPLE
 CUTTING
 SHOP DRAWINGS
 PROTOTYPE
 FLAME CERTIFICATION

AREAS:	QTY PER AREA:
PATIO	12
- LOUNGE AREA	12

SPECIAL INSTRUCTIONS:

- PROTOTYPES ARE REQUIRED FOR FINAL APPROVAL OF ALL CUSTOM FURNITURE REGARDLESS OF QUANTITY. APPROVAL OF SHOP DRAWINGS ARE FOR PROTOTYPE FABRICATION ONLY. SHOP DRAWINGS ARE APPROVED BY ICRAVE FOR DESIGN INTENT AND SCALE ONLY. MANUFACTURER IS RESPONSIBLE FOR ALL STRUCTURAL PERFORMANCE, DURABILITY AND QUALITY OF MATERIALS.
- FURNITURE IS FOR CONTRACT USE AND IS TO BE FABRICATED AND TO PERFORM ACCORDINGLY. FURNITURE TO BE BUILT, FINISHED AND SEALED AS REQUIRED TO WITHSTAND CONTRACT USE.

PROJECT NAME: ZUZU RESTAURANT

OUTDOOR LOUNGE CHAIR

PROJECT NUMBER: 22-037

-
3. FOR ANY ITEM SUPPLIED BY A VENDOR OTHER THAN WHAT IS SPECIFIED ABOVE, SUBMITTAL OF SPECIFICATIONS, SHOP DRAWINGS, FINISH SAMPLES, AND/OR PROTOTYPE TO DESIGNER IS REQUIRED FOR REVIEW AND WRITTEN APPROVAL.
 4. MANUFACTURER TO ADVISE OF ALL APPROPRIATE ADHESIVE AND INSTALLATION METHODS; AND TO PROVIDE WRITTEN INSTRUCTIONS WITH SHIPMENT OF GOODS; AND SUBMIT A COPY OF INSTRUCTIONS TO PURCHASING AGENT.
 5. EXTERIOR, INTERIOR AND DECORATIVE HARDWARE (HINGES, BOLTS, SCREWS, ANCHORS, ETC) TO BE NON CORROSIVE.
 6. ALL EXPOSED HARDWARE TO BE NEATLY MITERED, SANDED, AND SPLINTER FREE.
 7. ALL INTERIOR FOAM TO BE HIGH DENSITY AND PASS CAL 117 OR LOCAL GOVERNING CODES, WHICHEVER IS MORE STRINGENT.
 8. UPHOLSTERY PATTERN TO BE MATCHED AT SEAMS. UPHOLSTERY MUST BE SMOOTH AND EVEN WITH NO LUMP OR IRREGULARITIES. FABRIC TO BE FIRST RUN GOODS FROM FULL BOLTS AND FROM SAME DYE LOT.
 9. HEAVY DUTY CONCEALED GLIDES AS REQUIRED. DIAMETER TO BE SIZED PER LEG DIMENSIONS (AS LARGE AS POSSIBLE) WITHOUT BEING VISIBLE. GLIDE COLOR TO MATCH LEG FINISH. GLIDES TO BE COMPATIBLE WITH FLOOR FINISH TO AVOID DAMAGE TO FLOOR. MANUFACTURER TO COORDINATE WITH GC AND DESIGNER PRIOR TO FABRICATION.
 10. ALL FACE VENEERS SHALL BE MATCHED FOR COLOR AND GRAIN TO PRESENT A UNIFORM APPEARANCE.
 11. AT MINIMUM, SEAT SUSPENSION TO BE NO-SAG, SINUOUS WIRE, 8-GAUGE. TIGHT BACKS ARE 11-GAUGE.
 12. SEAT CUSHIONS TO BE 1.8 LB. DENSITY FOAM WITH A FIRMNESS LEVEL OF 24/21. FOAM SHOULD HAVE DOUBLE LAYER OF DACRON WITH MUSLIN COVER. DACRON SHOULD BE GLUED TO FOAM. FOAM CORE AND WRAP MUST PASS CALIFORNIA BULLETIN 117 OR WHICHEVER IS THE MOST STRINGENT FOR THE INSTALLATION LOCATION.
 13. UPHOLSTERED CONSTRUCTION: FRAME SHALL BE CONSTRUCTED OF MIXED HARDWOODS, KILN DRIED TO MOISTURE CONTENTS OF 7-9%.
 14. WOOD JOINTS TO BE MORTIS AND TENON RATHER THAN DOWEL PINS WHEN POSSIBLE.
 15. REFER TO DRAWINGS FOR EXACT LOCATION AND/OR MOUNTING HEIGHTS AND MANNER OF INSTALLATION. IN THE EVENT OF A DISCREPANCY BETWEEN DRAWINGS AND SPECIFICATIONS, PLEASE CONTACT ICRAVE IMMEDIATELY FOR WRITTEN CLARIFICATION.
 16. STAIN TREATMENT IS REQUIRED ON ALL UPHOLSTERED ITEMS. UPHOLSTERY FABRIC MUST HAVE A NANO-TEX STAIN WITH DURABLOCK FINISH OR SIMILAR AS RECOMMENDED BY THE MANUFACTURER TO BE INHERENT OF THESE QUALITIES. ALL UPHOLSTERY TO BE BACKED AND/OR TREATED TO BE RESISTANT TO PUNCTURES. ALL FABRIC SPECIFIED MUST RECEIVE PRE-SHRINKING, NON-FADING AND NON-CROCKING TREATMENT.
 17. ALL FABRICS TO RECEIVE FIRE AND FLAME TREATMENT TO MEET ALL LOCAL, STATE AND FEDERAL REQUIREMENTS. ALL FIRE AND FLAME RETARDANTS ARE TO BE WITH ONLY NON-SALINE SOLUTION TO PREVENT CORROSION AND MILDEW OF FABRIC.
 18. MANUFACTURER TO VERIFY ALL C.O.M AND C.O.L. QUANTITY REQUIREMENTS PRIOR TO FABRICATION

PROJECT NAME: ZUZU RESTAURANT

OUTDOOR BAR STOOL

PROJECT NUMBER: 22-037

ISSUE DATE: 11 OCT 2022

REVISION DATE:

MANUFACTURER:	RESTORATION HARDWARE 9 NINTH AVENUE NEW YORK, NY 10014, United States P: (212) 217-2210 WWW.RESTORATIONHARDWARE.COM	DISTRIBUTOR:	
CONTACT:	*MADELYN MACHADO MMACHADO@RH.COM	CONTACT:	

TOTAL QTY:	9	LEAD TIME:	
ITEM COST:	\$0.00	TOTAL COST:	\$0.00

DESCRIPTION	BAR STOOL
PRODUCT NAME/#	MALTA TEAK BAR STOOL
FINISH/MATERIAL	NATURAL TEAK/CLAY
DIMENSIONS	22"W x 23"D x 37½"H
SEAT HEIGHT	22-3/4"
COM/COL FABRIC DETAIL	FB-12
FABRIC YARDAGE REQUIRED	
NOTES	MFR TO PROVIDE MOCK UP, DRAWINGS AND FINISH SAMPLES FOR REVIEW AND APPROVAL



SUBMITTALS:

FINISH SAMPLE
 CUTTING
 SHOP DRAWINGS
 PROTOTYPE
 FLAME CERTIFICATION

AREAS:	QTY PER AREA:
PATIO	9
- BAR	9

SPECIAL INSTRUCTIONS:

1. PROTOTYPES ARE REQUIRED FOR FINAL APPROVAL OF ALL CUSTOM FURNITURE REGARDLESS OF QUANTITY. APPROVAL OF SHOP DRAWINGS ARE FOR PROTOTYPE FABRICATION ONLY. SHOP DRAWINGS ARE APPROVED BY ICRAVE FOR DESIGN INTENT AND SCALE ONLY. MANUFACTURER IS RESPONSIBLE FOR ALL STRUCTURAL PERFORMANCE, DURABILITY AND QUALITY OF MATERIALS.
2. FURNITURE IS FOR CONTRACT USE AND IS TO BE FABRICATED AND TO PERFORM ACCORDINGLY. FURNITURE TO BE BUILT, FINISHED AND SEALED AS REQUIRED TO WITHSTAND CONTRACT USE.

PROJECT NAME: ZUZU RESTAURANT

OUTDOOR BAR STOOL

PROJECT NUMBER: 22-037

3. FOR ANY ITEM SUPPLIED BY A VENDOR OTHER THAN WHAT IS SPECIFIED ABOVE, SUBMITTAL OF SPECIFICATIONS, SHOP DRAWINGS, FINISH SAMPLES, AND/OR PROTOTYPE TO DESIGNER IS REQUIRED FOR REVIEW AND WRITTEN APPROVAL.

4. MANUFACTURER TO ADVISE OF ALL APPROPRIATE ADHESIVE AND INSTALLATION METHODS; AND TO PROVIDE WRITTEN INSTRUCTIONS WITH SHIPMENT OF GOODS; AND SUBMIT A COPY OF INSTRUCTIONS TO PURCHASING AGENT.

5. EXTERIOR, INTERIOR AND DECORATIVE HARDWARE (HINGES, BOLTS, SCREWS, ANCHORS, ETC) TO BE NON CORROSIVE.

6. ALL EXPOSED HARDWARE TO BE NEATLY MITERED, SANDED, AND SPLINTER FREE.

7. ALL INTERIOR FOAM TO BE HIGH DENSITY AND PASS CAL 117 OR LOCAL GOVERNING CODES, WHICHEVER IS MORE STRINGENT.

8. UPHOLSTERY PATTERN TO BE MATCHED AT SEAMS. UPHOLSTERY MUST BE SMOOTH AND EVEN WITH NO LUMP OR IRREGULARITIES. FABRIC TO BE FIRST RUN GOODS FROM FULL BOLTS AND FROM SAME DYE LOT.

9. HEAVY DUTY CONCEALED GLIDES AS REQUIRED. DIAMETER TO BE SIZED PER LEG DIMENSIONS (AS LARGE AS POSSIBLE) WITHOUT BEING VISIBLE. GLIDE COLOR TO MATCH LEG FINISH. GLIDES TO BE COMPATIBLE WITH FLOOR FINISH TO AVOID DAMAGE TO FLOOR. MANUFACTURER TO COORDINATE WITH GC AND DESIGNER PRIOR TO FABRICATION.

10. ALL FACE VENEERS SHALL BE MATCHED FOR COLOR AND GRAIN TO PRESENT A UNIFORM APPEARANCE.

11. AT MINIMUM, SEAT SUSPENSION TO BE NO-SAG, SINUOUS WIRE, 8-GAUGE. TIGHT BACKS ARE 11-GAUGE.

12. SEAT CUSHIONS TO BE 1.8 LB. DENSITY FOAM WITH A FIRMNESS LEVEL OF 24/21. FOAM SHOULD HAVE DOUBLE LAYER OF DACRON WITH MUSLIN COVER. DACRON SHOULD BE GLUED TO FOAM. FOAM CORE AND WRAP MUST PASS CALIFORNIA BULLETIN 117 OR WHICHEVER IS THE MOST STRINGENT FOR THE INSTALLATION LOCATION.

13. UPHOLSTERED CONSTRUCTION: FRAME SHALL BE CONSTRUCTED OF MIXED HARDWOODS, KILN DRIED TO MOISTURE CONTENTS OF 7-9%.

14. WOOD JOINTS TO BE MORTIS AND TENON RATHER THAN DOWEL PINS WHEN POSSIBLE.

15. REFER TO DRAWINGS FOR EXACT LOCATION AND/OR MOUNTING HEIGHTS AND MANNER OF INSTALLATION. IN THE EVENT OF A DISCREPANCY BETWEEN DRAWINGS AND SPECIFICATIONS, PLEASE CONTACT ICRAVE IMMEDIATELY FOR WRITTEN CLARIFICATION.

16. STAIN TREATMENT IS REQUIRED ON ALL UPHOLSTERED ITEMS. UPHOLSTERY FABRIC MUST HAVE A NANO-TEX STAIN WITH DURABLOCK FINISH OR SIMILAR AS RECOMMENDED BY THE MANUFACTURER TO BE INHERENT OF THESE QUALITIES. ALL UPHOLSTERY TO BE BACKED AND/OR TREATED TO BE RESISTANT TO PUNCTURES. ALL FABRIC SPECIFIED MUST RECEIVE PRE-SHRINKING, NON-FADING AND NON-CROCKING TREATMENT.

17. ALL FABRICS TO RECEIVE FIRE AND FLAME TREATMENT TO MEET ALL LOCAL, STATE AND FEDERAL REQUIREMENTS. ALL FIRE AND FLAME RETARDANTS ARE TO BE WITH ONLY NON-SALINE SOLUTION TO PREVENT CORROSION AND MILDEW OF FABRIC.

18. MANUFACTURER TO VERIFY ALL C.O.M AND C.O.L. QUANTITY REQUIREMENTS PRIOR TO FABRICATION

PROJECT NAME: ZUZU RESTAURANT

OUTDOOR DINING CHAIR

PROJECT NUMBER: 22-037

ISSUE DATE: 11 OCT 2022

REVISION DATE:

MANUFACTURER: ANDREU WORLD
222 MERCHANDISE MART
PLAZA SUITE 10-132
CHICAGO, IL 60654-, United States
P: (212) 679-0300
WWW.ANDREUWORLD.COM

DISTRIBUTOR:

CONTACT: GREGORY BUJA
P: (212) 679-0300
GREGORY@PRIMASONSYMCHIK.COM

CONTACT:

TOTAL QTY: 16

LEAD TIME:

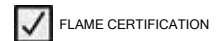
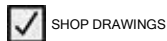
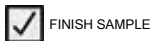
ITEM COST: \$1,857.00

TOTAL COST: \$29,712.00

DESCRIPTION: OUTDOOR DINING CHAIR
PRODUCT NAME/#: SERENA TEAK
FINISH/MATERIAL: TEAK, 4055
DIMENSIONS: 22.5"W X 23.3"D X 32.48"H
SEAT HEIGHT: 17.32"
FABRIC YARDAGE REQUIRED:
NOTES: MFR TO PROVIDE MOCK UP, DRAWINGS AND FINISH SAMPLES FOR REVIEW AND APPROVAL



SUBMITTALS:



AREAS:

QTY PER AREA:

PATIO

16

- LOUNGE AREA

16

SPECIAL INSTRUCTIONS:

1. PROTOTYPES ARE REQUIRED FOR FINAL APPROVAL OF ALL CUSTOM FURNITURE REGARDLESS OF QUANTITY. APPROVAL OF SHOP DRAWINGS ARE FOR PROTOTYPE FABRICATION ONLY. SHOP DRAWINGS ARE APPROVED BY ICRAVE FOR DESIGN INTENT AND SCALE ONLY. MANUFACTURER IS RESPONSIBLE FOR ALL STRUCTURAL PERFORMANCE, DURABILITY AND QUALITY OF MATERIALS.

PROJECT NAME: ZUZU RESTAURANT

OUTDOOR DINING CHAIR

PROJECT NUMBER: 22-037

-
2. FURNITURE IS FOR CONTRACT USE AND IS TO BE FABRICATED AND TO PERFORM ACCORDINGLY. FURNITURE TO BE BUILT, FINISHED AND SEALED AS REQUIRED TO WITHSTAND CONTRACT USE.
 3. FOR ANY ITEM SUPPLIED BY A VENDOR OTHER THAN WHAT IS SPECIFIED ABOVE, SUBMITTAL OF SPECIFICATIONS, SHOP DRAWINGS, FINISH SAMPLES, AND/OR PROTOTYPE TO DESIGNER IS REQUIRED FOR REVIEW AND WRITTEN APPROVAL.
 4. MANUFACTURER TO ADVISE OF ALL APPROPRIATE ADHESIVE AND INSTALLATION METHODS; AND TO PROVIDE WRITTEN INSTRUCTIONS WITH SHIPMENT OF GOODS; AND SUBMIT A COPY OF INSTRUCTIONS TO PURCHASING AGENT.
 5. EXTERIOR, INTERIOR AND DECORATIVE HARDWARE (HINGES, BOLTS, SCREWS, ANCHORS, ETC) TO BE NON CORROSIVE.
 6. ALL EXPOSED HARDWARE TO BE NEATLY MITERED, SANDED, AND SPLINTER FREE.
 7. ALL INTERIOR FOAM TO BE HIGH DENSITY AND PASS CAL 117 OR LOCAL GOVERNING CODES, WHICHEVER IS MORE STRINGENT.
 8. UPHOLSTERY PATTERN TO BE MATCHED AT SEAMS. UPHOLSTERY MUST BE SMOOTH AND EVEN WITH NO LUMP OR IRREGULARITIES. FABRIC TO BE FIRST RUN GOODS FROM FULL BOLTS AND FROM SAME DYE LOT.
 9. HEAVY DUTY CONCEALED GLIDES AS REQUIRED. DIAMETER TO BE SIZED PER LEG DIMENSIONS (AS LARGE AS POSSIBLE) WITHOUT BEING VISIBLE. GLIDE COLOR TO MATCH LEG FINISH. GLIDES TO BE COMPATIBLE WITH FLOOR FINISH TO AVOID DAMAGE TO FLOOR. MANUFACTURER TO COORDINATE WITH GC AND DESIGNER PRIOR TO FABRICATION.
 10. ALL FACE VENEERS SHALL BE MATCHED FOR COLOR AND GRAIN TO PRESENT A UNIFORM APPEARANCE.
 11. AT MINIMUM, SEAT SUSPENSION TO BE NO-SAG, SINUOUS WIRE, 8-GAUGE. TIGHT BACKS ARE 11-GAUGE.
 12. SEAT CUSHIONS TO BE 1.8 LB. DENSITY FOAM WITH A FIRMNESS LEVEL OF 24/21. FOAM SHOULD HAVE DOUBLE LAYER OF DACRON WITH MUSLIN COVER. DACRON SHOULD BE GLUED TO FOAM. FOAM CORE AND WRAP MUST PASS CALIFORNIA BULLETIN 117 OR WHICHEVER IS THE MOST STRINGENT FOR THE INSTALLATION LOCATION.
 13. UPHOLSTERED CONSTRUCTION: FRAME SHALL BE CONSTRUCTED OF MIXED HARDWOODS, KILN DRIED TO MOISTURE CONTENTS OF 7-9%.
 14. WOOD JOINTS TO BE MORTIS AND TENON RATHER THAN DOWEL PINS WHEN POSSIBLE.
 15. REFER TO DRAWINGS FOR EXACT LOCATION AND/OR MOUNTING HEIGHTS AND MANNER OF INSTALLATION. IN THE EVENT OF A DISCREPANCY BETWEEN DRAWINGS AND SPECIFICATIONS, PLEASE CONTACT ICRAVE IMMEDIATELY FOR WRITTEN CLARIFICATION.
 16. STAIN TREATMENT IS REQUIRED ON ALL UPHOLSTERED ITEMS. UPHOLSTERY FABRIC MUST HAVE A NANO-TEX STAIN WITH DURABLOCK FINISH OR SIMILAR AS RECOMMENDED BY THE MANUFACTURER TO BE INHERENT OF THESE QUALITIES. ALL UPHOLSTERY TO BE BACKED AND/OR TREATED TO BE RESISTANT TO PUNCTURES. ALL FABRIC SPECIFIED MUST RECEIVE PRE-SHRINKING, NON-FADING AND NON-CROCKING TREATMENT.
 17. ALL FABRICS TO RECEIVE FIRE AND FLAME TREATMENT TO MEET ALL LOCAL, STATE AND FEDERAL REQUIREMENTS. ALL FIRE AND FLAME RETARDANTS ARE TO BE WITH ONLY NON-SALINE SOLUTION TO PREVENT CORROSION AND MILDEW OF FABRIC.
 18. MANUFACTURER TO VERIFY ALL C.O.M AND C.O.L. QUANTITY REQUIREMENTS PRIOR TO FABRICATION

PROJECT NAME: ZUZU RESTAURANT
 PROJECT NUMBER: 22-037

OUTDOOR DINING CHAIR @GARDEN

ISSUE DATE: 11 OCT 2022
 REVISION DATE:

MANUFACTURER:	EXPORMIM USA LLC 375 PARK AVENUE SUITE 2607 NEW YORK, NY 10152, Spain WWW.EXPORMIM.ES	DISTRIBUTOR:	
CONTACT:	MARIA GIL* P: 212.204.8572 MARIA@EXPORMIM.COM	CONTACT:	

TOTAL QTY:	0	LEAD TIME:	
ITEM COST:	\$972.00	TOTAL COST:	\$0.00

DESCRIPTION	OUTDOOR DINING CHAIR
PRODUCT NAME/#	NIDO STACKABLE HNAD-WOVEN DINING ARM CHAIR
FINISH/MATERIAL	ROPE-STAINELSS STEEL
DIMENSIONS	23.5" x 23.5" x 32.25"
SEAT HEIGHT	15.75"
WEIGHT	9KG
COM/COL FABRIC DETAIL	
FABRIC YARDAGE REQUIRED	1.7YARD
NOTES	MFR TO PROVIDE MOCK UP, DRAWINGS AND FINISH SAMPLES FOR REVIEW AND APPROVAL



SUBMITTALS:

FINISH SAMPLE
 CUTTING
 SHOP DRAWINGS
 PROTOTYPE
 FLAME CERTIFICATION

AREAS:	QTY PER AREA:
PATIO	0
- BANQUETTE AREA	0

SPECIAL INSTRUCTIONS:

1. PROTOTYPES ARE REQUIRED FOR FINAL APPROVAL OF ALL CUSTOM FURNITURE REGARDLESS OF QUANTITY. APPROVAL OF SHOP DRAWINGS ARE FOR PROTOTYPE FABRICATION ONLY. SHOP DRAWINGS ARE APPROVED BY ICRAVE FOR DESIGN INTENT AND SCALE ONLY. MANUFACTURER IS RESPONSIBLE FOR ALL STRUCTURAL PERFORMANCE, DURABILITY AND QUALITY OF MATERIALS.
2. FURNITURE IS FOR CONTRACT USE AND IS TO BE FABRICATED AND TO PERFORM ACCORDINGLY. FURNITURE TO BE BUILT, FINISHED AND SEALED AS REQUIRED TO WITHSTAND CONTRACT USE.

PROJECT NAME: ZUZU RESTAURANT

OUTDOOR DINING CHAIR @GARDEN

PROJECT NUMBER: 22-037

3. FOR ANY ITEM SUPPLIED BY A VENDOR OTHER THAN WHAT IS SPECIFIED ABOVE, SUBMITTAL OF SPECIFICATIONS, SHOP DRAWINGS, FINISH SAMPLES, AND/OR PROTOTYPE TO DESIGNER IS REQUIRED FOR REVIEW AND WRITTEN APPROVAL.
4. MANUFACTURER TO ADVISE OF ALL APPROPRIATE ADHESIVE AND INSTALLATION METHODS; AND TO PROVIDE WRITTEN INSTRUCTIONS WITH SHIPMENT OF GOODS; AND SUBMIT A COPY OF INSTRUCTIONS TO PURCHASING AGENT.
5. EXTERIOR, INTERIOR AND DECORATIVE HARDWARE (HINGES, BOLTS, SCREWS, ANCHORS, ETC) TO BE NON CORROSIVE.
6. ALL EXPOSED HARDWARE TO BE NEATLY MITERED, SANDED, AND SPLINTER FREE.
7. ALL INTERIOR FOAM TO BE HIGH DENSITY AND PASS CAL 117 OR LOCAL GOVERNING CODES, WHICHEVER IS MORE STRINGENT.
8. UPHOLSTERY PATTERN TO BE MATCHED AT SEAMS. UPHOLSTERY MUST BE SMOOTH AND EVEN WITH NO LUMP OR IRREGULARITIES. FABRIC TO BE FIRST RUN GOODS FROM FULL BOLTS AND FROM SAME DYE LOT.
9. HEAVY DUTY CONCEALED GLIDES AS REQUIRED. DIAMETER TO BE SIZED PER LEG DIMENSIONS (AS LARGE AS POSSIBLE) WITHOUT BEING VISIBLE. GLIDE COLOR TO MATCH LEG FINISH. GLIDES TO BE COMPATIBLE WITH FLOOR FINISH TO AVOID DAMAGE TO FLOOR. MANUFACTURER TO COORDINATE WITH GC AND DESIGNER PRIOR TO FABRICATION.
10. ALL FACE VENEERS SHALL BE MATCHED FOR COLOR AND GRAIN TO PRESENT A UNIFORM APPEARANCE.
11. AT MINIMUM, SEAT SUSPENSION TO BE NO-SAG, SINUOUS WIRE, 8-GAUGE. TIGHT BACKS ARE 11-GAUGE.
12. SEAT CUSHIONS TO BE 1.8 LB. DENSITY FOAM WITH A FIRMNESS LEVEL OF 24/21. FOAM SHOULD HAVE DOUBLE LAYER OF DACRON WITH MUSLIN COVER. DACRON SHOULD BE GLUED TO FOAM. FOAM CORE AND WRAP MUST PASS CALIFORNIA BULLETIN 117 OR WHICHEVER IS THE MOST STRINGENT FOR THE INSTALLATION LOCATION.
13. UPHOLSTERED CONSTRUCTION: FRAME SHALL BE CONSTRUCTED OF MIXED HARDWOODS, KILN DRIED TO MOISTURE CONTENTS OF 7-9%.
14. WOOD JOINTS TO BE MORTIS AND TENON RATHER THAN DOWEL PINS WHEN POSSIBLE.
15. REFER TO DRAWINGS FOR EXACT LOCATION AND/OR MOUNTING HEIGHTS AND MANNER OF INSTALLATION. IN THE EVENT OF A DISCREPANCY BETWEEN DRAWINGS AND SPECIFICATIONS, PLEASE CONTACT ICRAVE IMMEDIATELY FOR WRITTEN CLARIFICATION.
16. STAIN TREATMENT IS REQUIRED ON ALL UPHOLSTERED ITEMS. UPHOLSTERY FABRIC MUST HAVE A NANO-TEX STAIN WITH DURABLOCK FINISH OR SIMILAR AS RECOMMENDED BY THE MANUFACTURER TO BE INHERENT OF THESE QUALITIES. ALL UPHOLSTERY TO BE BACKED AND/OR TREATED TO BE RESISTANT TO PUNCTURES. ALL FABRIC SPECIFIED MUST RECEIVE PRE-SHRINKING, NON-FADING AND NON-CROCKING TREATMENT.
17. ALL FABRICS TO RECEIVE FIRE AND FLAME TREATMENT TO MEET ALL LOCAL, STATE AND FEDERAL REQUIREMENTS. ALL FIRE AND FLAME RETARDANTS ARE TO BE WITH ONLY NON-SALINE SOLUTION TO PREVENT CORROSION AND MILDEW OF FABRIC.
18. MANUFACTURER TO VERIFY ALL C.O.M AND C.O.L. QUANTITY REQUIREMENTS PRIOR TO FABRICATION

PROJECT NAME: ZUZU RESTAURANT

OUTDOOR BANQUETTE FABRIC

PROJECT NUMBER: 22-037

ISSUE DATE: 11 OCT 2022

REVISION DATE:

MANUFACTURER: KRAVET
 22 W 21ST STREET
 11TH FLOOR
 NEW YORK, NY 10010, United States
 P: 800-645-9068
 WWW.KRAVET.COM

DISTRIBUTOR:

CONTACT: DARLENE DE LISE
 P: 516-293-2000 X2359
 DARLENE.DELISE@KRAVET.COM

CONTACT:

TOTAL QTY: 0

LEAD TIME:

ITEM COST: \$0.00

TOTAL COST: \$0.00

DESCRIPTION	OUTDOOR UPHOLSTERY
PRODUCT NAME/#	SCANDIKAT
FINISH	SOIL & STAIN RELEASE FINISH
COLOR	LIME
CONTENT	SOLUTION DYED ACRYLIC - 100%
WIDTH	55"W
REPEAT	V: 6.5" H: 2"
RAILROAD	NO
BACKING	ACRYLIC
FIRE RATING	CAL 117
ABRASION	10.000
MAINTENANCE	
NOTES	PROVIDE SAMPLE TO ICRAVE FOR REVIEW AND APPROVAL



SUBMITTALS:

- CUTTING
 FLAME CERTIFICATION
 FIRE
 COLOR CRACKING
 COLOR LIGHT
 PHYSICAL
 ABRASION HEAVY
 ABRASION GENERAL

SPECIAL INSTRUCTIONS:

- FABRIC TO BE FIRST RUN GOODS FROM FULL BOLTS AND FROM SAME DYE LOT. FABRIC SPECIFIED MUST RECEIVE PRE-SHRINKING, NON-FADING, NON-CROCKING, ACRYLIC BACKING, SOIL, STAIN, FIRE AND FLAME TREATMENT AS SPECIFIED AS MEET ALL LOCAL CODES. ALL FIRE AND FLAME RETARDANTS ARE TO BE WITH ONLY NON-SALING SOLUTION TO PREVENT CORROSION AND MILDEW OF FABRIC. ALL MATERIALS TO PASS ALL CODES AS REQUIRED BY LOCAL, STATE, AND FEDERAL REGULATIONS. PURCHASER TO CONFIRM CODES CRITERIA AND ARE ABLE TO ADMINISTER ALL TESTING, FR TREATMENTS, AND COMPLIANCE SATISFACTION.
- FURNITURE IS FOR CONTRACT USE AND IS TO BE FABRICATED AND TO PERFORM ACCORDINGLY. FURNITURE TO BE BUILT, FINISHED AND SEALED AS REQUIRED FOR HIGH TRAFFIC COMMERCIAL USE.



FB-11

PROJECT NAME: ZUZU RESTAURANT

OUTDOOR BANQUETTE FABRIC

PROJECT NUMBER: 22-037

3. FOR ANY ITEM SUPPLIED BY A VENDOR OTHER THAN WHAT IS SPECIFIED ABOVE, SUBMITTAL OF SPECIFICATIONS, SHOP DRAWINGS, FINISH SAMPLES, AND/OR PROTOTYPE IS REQUIRED FOR REVIEW AND WRITTEN APPROVAL BY ICRAVE AND THE CLIENT

4. ALL FURNITURE AND MATERIALS TO BE FLAMEPROOF AS REQUIRED BY LOCAL, STATE AND FEDERAL CODES, INCLUDING STANDARD METHODS OF TESTS AND CLASSIFICATION FOR CIGARETTE IGNITION.

5. ALL FINISH SAMPLES TO BE SUBMITTED FOR FINAL APPROVAL PRIOR TO FABRICATION.

6. MANUFACTURER TO COORDINATE WITH GC AND DESIGNER PRIOR TO FABRICATION.

7. ALL FACE VENEERS SHALL BE MATCHED FOR COLOR AND GRAIN TO PRESENT A UNIFORM APPEARANCE.

8. MANUFACTURER TO ADVISE OF ALL APPROPRIATE ADHESIVE AND INSTALLATION METHODS, PROVIDE WRITTEN INSTRUCTIONS AS WELL AS ALL REQUIRED HARDWARE WITH SHIPMENT OF GOODS. MANUFACTURER TO SUBMIT A COPY OF INSTRUCTIONS TO PURCHASING AGENT.

9. REFER TO DRAWINGS FOR EXACT LOCATION AND/OR MOUNTING HEIGHTS AND MANNER OF INSTALLATION. IN THE EVENT OF A DISCREPANCY BETWEEN DRAWINGS AND SPECIFICATIONS, PLEASE CONTACT ICRAVE IMMEDIATELY FOR WRITTEN CLARIFICATION.

10. PURCHASER TO CONFIRM WARRANTIES, AND SUBMIT PERFORMANCE CERTIFICATES AS REQUIRED.

PROJECT NAME: ZUZU RESTAURANT
 PROJECT NUMBER: 22-037

OUTDOOR BAR STOOL UPHOLSTERY

ISSUE DATE: 11 OCT 2022
 REVISION DATE:

MANUFACTURER: RESTORATION HARDWARE
 9 NINTH AVENUE
 NEW YORK, NY 10014, United States
 P: (212) 217-2210
 WWW.RESTORATIONHARDWARE.COM

DISTRIBUTOR:

CONTACT: *MADELYN MACHADO
 MMACHADO@RH.COM

CONTACT:

TOTAL QTY: 0 LEAD TIME:
 ITEM COST: \$0.00 TOTAL COST: \$0.00

DESCRIPTION OUTDOOR UPHOLSTERY FABRIC
 PRODUCT NAME/# CANVAS
 FINISH Standard Label: Finish
 COLOR DOVE
 CONTENT 100% SOLUTION DYED ACRYLIC, 98% UV PROTECTION
 WIDTH 54"
 RAILROAD YES
 BACKING ACRYLIC
 FIRE RATING CAL 117
 ABRASION 50,000 DOUBLE RUBS
 MAINTENANCE
 NOTES PROVIDE SAMPLE TO ICRAVE FOR REVIEW AND APPROVAL



SUBMITTALS:

CUTTING FLAME CERTIFICATION
 FIRE COLOR CRACKING COLOR LIGHT PHYSICAL ABRASION HEAVY ABRASION GENERAL

SPECIAL INSTRUCTIONS:

- FABRIC TO BE FIRST RUN GOODS FROM FULL BOLTS AND FROM SAME DYE LOT. FABRIC SPECIFIED MUST RECEIVE PRE-SHRINKING, NON-FADING, NON-CROCKING, ACRYLIC BACKING, SOIL, STAIN, FIRE AND FLAME TREATMENT AS SPECIFIED AS MEET ALL LOCAL CODES. ALL FIRE AND FLAME RETARDANTS ARE TO BE WITH ONLY NON-SALING SOLUTION TO PREVENT CORROSION AND MILDEW OF FABRIC. ALL MATERIALS TO PASS ALL CODES AS REQUIRED BY LOCAL, STATE, AND FEDERAL REGULATIONS. PURCHASER TO CONFIRM CODES CRITERIA AND ARE ABLE TO ADMINISTER ALL TESTING, FR TREATMENTS, AND COMPLIANCE SATISFACTION.
- FURNITURE IS FOR CONTRACT USE AND IS TO BE FABRICATED AND TO PERFORM ACCORDINGLY. FURNITURE TO BE BUILT, FINISHED AND SEALED AS REQUIRED FOR HIGH TRAFFIC COMMERCIAL USE.



FB-12

PROJECT NAME: ZUZU RESTAURANT

OUTDOOR BAR STOOL UPHOLSTERY

PROJECT NUMBER: 22-037

3. FOR ANY ITEM SUPPLIED BY A VENDOR OTHER THAN WHAT IS SPECIFIED ABOVE, SUBMITTAL OF SPECIFICATIONS, SHOP DRAWINGS, FINISH SAMPLES, AND/OR PROTOTYPE IS REQUIRED FOR REVIEW AND WRITTEN APPROVAL BY ICRAVE AND THE CLIENT

4. ALL FURNITURE AND MATERIALS TO BE FLAMEPROOF AS REQUIRED BY LOCAL, STATE AND FEDERAL CODES, INCLUDING STANDARD METHODS OF TESTS AND CLASSIFICATION FOR CIGARETTE IGNITION.

5. ALL FINISH SAMPLES TO BE SUBMITTED FOR FINAL APPROVAL PRIOR TO FABRICATION.

6. MANUFACTURER TO COORDINATE WITH GC AND DESIGNER PRIOR TO FABRICATION.

7. ALL FACE VENEERS SHALL BE MATCHED FOR COLOR AND GRAIN TO PRESENT A UNIFORM APPEARANCE.

8. MANUFACTURER TO ADVISE OF ALL APPROPRIATE ADHESIVE AND INSTALLATION METHODS, PROVIDE WRITTEN INSTRUCTIONS AS WELL AS ALL REQUIRED HARDWARE WITH SHIPMENT OF GOODS. MANUFACTURER TO SUBMIT A COPY OF INSTRUCTIONS TO PURCHASING AGENT.

9. REFER TO DRAWINGS FOR EXACT LOCATION AND/OR MOUNTING HEIGHTS AND MANNER OF INSTALLATION. IN THE EVENT OF A DISCREPANCY BETWEEN DRAWINGS AND SPECIFICATIONS, PLEASE CONTACT ICRAVE IMMEDIATELY FOR WRITTEN CLARIFICATION.

10. PURCHASER TO CONFIRM WARRANTIES, AND SUBMIT PERFORMANCE CERTIFICATES AS REQUIRED.

PROJECT NAME: ZUZU RESTAURANT

OUTDOOR DINING CHIAR ROPE

PROJECT NUMBER: 22-037

ISSUE DATE: 11 OCT 2022

REVISION DATE:

MANUFACTURER: ANDREU WORLD
 222 MERCHANDISE MART
 PLAZA SUITE 10-132
 CHICAGO, IL 60654-, United States
 P: (212) 679-0300
 WWW.ANDREUWORLD.COM

DISTRIBUTOR:

CONTACT: GREGORY BUJA
 P: (212) 679-0300
 GREGORY@PRIMASONSYMCHIK.COM

CONTACT:

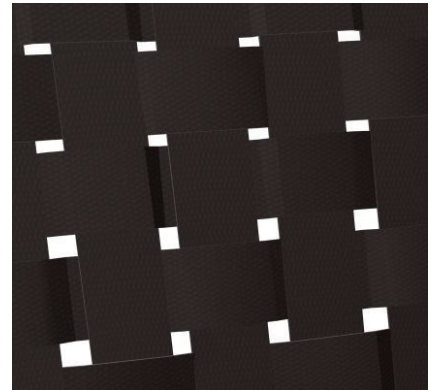
TOTAL QTY: 0

LEAD TIME:

ITEM COST: \$0.00

TOTAL COST: \$0.00

DESCRIPTION ROPE FABRICS
 PRODUCT NAME/# GRAPHITE GRAFITO
 COLOR CIGR
 NOTES PROVIDE SAMPLE TO ICRAVE FOR
 REVIEW AND APPROVAL



SUBMITTALS:

- CUTTING
 FLAME CERTIFICATION
 FIRE
 COLOR CRACKING
 COLOR LIGHT
 PHYSICAL
 ABRASION HEAVY
 ABRASION GENERAL

SPECIAL INSTRUCTIONS:

1. FABRIC TO BE FIRST RUN GOODS FROM FULL BOLTS AND FROM SAME DYE LOT. FABRIC SPECIFIED MUST RECEIVE PRE-SHRINKING, NON-FADING, NON-CROCKING, ACRYLIC BACKING, SOIL, STAIN, FIRE AND FLAME TREATMENT AS SPECIFIED AS MEET ALL LOCAL CODES. ALL FIRE AND FLAME RETARDANTS ARE TO BE WITH ONLY NON-SALING SOLUTION TO PREVENT CORROSION AND MILDEW OF FABRIC.

ALL MATERIALS TO PASS ALL CODES AS REQUIRED BY LOCAL, STATE, AND FEDERAL REGULATIONS. PURCHASER TO CONFIRM CODES CRITERIA AND ARE ABLE TO ADMINISTER ALL TESTING, FR TREATMENTS, AND COMPLIANCE SATISFACTION.

2. FURNITURE IS FOR CONTRACT USE AND IS TO BE FABRICATED AND TO PERFORM ACCORDINGLY. FURNITURE TO BE BUILT, FINISHED AND SEALED AS REQUIRED FOR HIGH TRAFFIC COMMERCIAL USE.



FB-13

PROJECT NAME: ZUZU RESTAURANT

OUTDOOR DINING CHIAR ROPE

PROJECT NUMBER: 22-037

3. FOR ANY ITEM SUPPLIED BY A VENDOR OTHER THAN WHAT IS SPECIFIED ABOVE, SUBMITTAL OF SPECIFICATIONS, SHOP DRAWINGS, FINISH SAMPLES, AND/OR PROTOTYPE IS REQUIRED FOR REVIEW AND WRITTEN APPROVAL BY ICRAVE AND THE CLIENT

4. ALL FURNITURE AND MATERIALS TO BE FLAMEPROOF AS REQUIRED BY LOCAL, STATE AND FEDERAL CODES, INCLUDING STANDARD METHODS OF TESTS AND CLASSIFICATION FOR CIGARETTE IGNITION.

5. ALL FINISH SAMPLES TO BE SUBMITTED FOR FINAL APPROVAL PRIOR TO FABRICATION.

6. MANUFACTURER TO COORDINATE WITH GC AND DESIGNER PRIOR TO FABRICATION.

7. ALL FACE VENEERS SHALL BE MATCHED FOR COLOR AND GRAIN TO PRESENT A UNIFORM APPEARANCE.

8. MANUFACTURER TO ADVISE OF ALL APPROPRIATE ADHESIVE AND INSTALLATION METHODS, PROVIDE WRITTEN INSTRUCTIONS AS WELL AS ALL REQUIRED HARDWARE WITH SHIPMENT OF GOODS. MANUFACTURER TO SUBMIT A COPY OF INSTRUCTIONS TO PURCHASING AGENT.

9. REFER TO DRAWINGS FOR EXACT LOCATION AND/OR MOUNTING HEIGHTS AND MANNER OF INSTALLATION. IN THE EVENT OF A DISCREPANCY BETWEEN DRAWINGS AND SPECIFICATIONS, PLEASE CONTACT ICRAVE IMMEDIATELY FOR WRITTEN CLARIFICATION.

10. PURCHASER TO CONFIRM WARRANTIES, AND SUBMIT PERFORMANCE CERTIFICATES AS REQUIRED.

PROJECT NAME: ZUZU RESTAURANT

OUTDOOR STACKABLE CHAIR
UPHOLSTERY

PROJECT NUMBER: 22-037

ISSUE DATE: 11 OCT 2022

REVISION DATE:

MANUFACTURER: EXPORMIM USA LLC
375 PARK AVENUE
SUITE 2607
NEW YORK, NY 10152, Spain
WWW.EXPORMIM.ES

DISTRIBUTOR:

CONTACT: MARIA GIL*
P: 212.204.8572
MARIA@EXPORMIM.COM

CONTACT:

TOTAL QTY: 0

LEAD TIME:

ITEM COST: \$0.00

TOTAL COST: \$0.00

DESCRIPTION OUTDOOR ROPE
 PRODUCT NAME/# 515-SPK
 FINISH ROPE
 COLOR DARK ORANGE
 FIRE RATING CAL 117
 NOTES PROVIDE SAMPLE TO ICRAVE FOR
 REVIEW AND APPROVAL



SUBMITTALS:

- CUTTING
 FLAME CERTIFICATION
 FIRE
 COLOR CRACKING
 COLOR LIGHT
 PHYSICAL
 ABRASION HEAVY
 ABRASION GENERAL

SPECIAL INSTRUCTIONS:

1. FABRIC TO BE FIRST RUN GOODS FROM FULL BOLTS AND FROM SAME DYE LOT. FABRIC SPECIFIED MUST RECEIVE PRE-SHRINKING, NON-FADING, NON-CROCKING, ACRYLIC BACKING, SOIL, STAIN, FIRE AND FLAME TREATMENT AS SPECIFIED AS MEET ALL LOCAL CODES. ALL FIRE AND FLAME RETARDANTS ARE TO BE WITH ONLY NON-SALING SOLUTION TO PREVENT CORROSION AND MILDEW OF FABRIC.

ALL MATERIALS TO PASS ALL CODES AS REQUIRED BY LOCAL, STATE, AND FEDERAL REGULATIONS. PURCHASER TO CONFIRM CODES CRITERIA AND ARE ABLE TO ADMINISTER ALL TESTING, FR TREATMENTS, AND COMPLIANCE SATISFACTION.

2. FURNITURE IS FOR CONTRACT USE AND IS TO BE FABRICATED AND TO PERFORM ACCORDINGLY. FURNITURE TO BE BUILT, FINISHED AND SEALED AS REQUIRED FOR HIGH TRAFFIC COMMERCIAL USE.



FB-14

PROJECT NAME: ZUZU RESTAURANT

OUTDOOR STACKABLE CHAIR
UPHOLSTERY

PROJECT NUMBER: 22-037

3. FOR ANY ITEM SUPPLIED BY A VENDOR OTHER THAN WHAT IS SPECIFIED ABOVE, SUBMITTAL OF SPECIFICATIONS, SHOP DRAWINGS, FINISH SAMPLES, AND/OR PROTOTYPE IS REQUIRED FOR REVIEW AND WRITTEN APPROVAL BY ICRAVE AND THE CLIENT

4. ALL FURNITURE AND MATERIALS TO BE FLAMEPROOF AS REQUIRED BY LOCAL, STATE AND FEDERAL CODES, INCLUDING STANDARD METHODS OF TESTS AND CLASSIFICATION FOR CIGARETTE IGNITION.

5. ALL FINISH SAMPLES TO BE SUBMITTED FOR FINAL APPROVAL PRIOR TO FABRICATION.

6. MANUFACTURER TO COORDINATE WITH GC AND DESIGNER PRIOR TO FABRICATION.

7. ALL FACE VENEERS SHALL BE MATCHED FOR COLOR AND GRAIN TO PRESENT A UNIFORM APPEARANCE.

8. MANUFACTURER TO ADVISE OF ALL APPROPRIATE ADHESIVE AND INSTALLATION METHODS, PROVIDE WRITTEN INSTRUCTIONS AS WELL AS ALL REQUIRED HARDWARE WITH SHIPMENT OF GOODS. MANUFACTURER TO SUBMIT A COPY OF INSTRUCTIONS TO PURCHASING AGENT.

9. REFER TO DRAWINGS FOR EXACT LOCATION AND/OR MOUNTING HEIGHTS AND MANNER OF INSTALLATION. IN THE EVENT OF A DISCREPANCY BETWEEN DRAWINGS AND SPECIFICATIONS, PLEASE CONTACT ICRAVE IMMEDIATELY FOR WRITTEN CLARIFICATION.

10. PURCHASER TO CONFIRM WARRANTIES, AND SUBMIT PERFORMANCE CERTIFICATES AS REQUIRED.

PROJECT NAME: ZUZU RESTAURANT

OUTDOOR LARGE DINING TABLE
@GARDEN

PROJECT NUMBER: 22-037

ISSUE DATE: 11 OCT 2022

REVISION DATE:

MANUFACTURER: EXPORMIM USA LLC
375 PARK AVENUE
SUITE 2607
NEW YORK, NY 10152, Spain
WWW.EXPORMIM.ES

DISTRIBUTOR:

CONTACT: MARIA GIL*
P: 212.204.8572
MARIA@EXPORMIM.COM

CONTACT:

TOTAL QTY: 0

LEAD TIME:

ITEM COST: \$3,400.00

TOTAL COST: \$0.00

DESCRIPTION	OUTDOOR DINING TABLE
PRODUCT NAME/#	ATRIVM OUTDOOR RECTANGULAR DINING TABLE MANEL MOLINA.2019
DIMENSIONS	180CM (70") X 98CM (38") X 74CM (29")
TABLE TOP FINISH	ALUMINUM
TABLE BASE	ALUMINUM
NOTES	MFR TO PROVIDE MOCK UP, DRAWINGS AND FINISH SAMPLES FOR REVIEW AND APPROVAL



SUBMITTALS:

FINISH SAMPLE

SHOP DRAWINGS

PROTOTYPE

FLAME CERTIFICATION

SPECIAL INSTRUCTIONS:

1. FURNITURE IS FOR CONTRACT USE AND IS TO BE FABRICATED AND TO PERFORM ACCORDINGLY. TABLE TOPS MUST HAVE A SCRATCH AND DENT RESISTANT COATING. FURNITURE TO BE BUILT, FINISHED AND SEALED AS REQUIRED FOR HIGH TRAFFIC COMMERCIAL USE.
2. PROTOTYPES ARE REQUIRED FOR FINAL APPROVAL OF ALL CUSTOM FURNITURE REGARDLESS OF QUANTITY. APPROVAL OF SHOP DRAWINGS ARE FOR PROTOTYPE FABRICATION ONLY.
3. FOR ANY ITEM SUPPLIED BY A VENDOR OTHER THAN WHAT IS SPECIFIED ABOVE, SUBMITTAL OF SPECIFICATIONS, SHOP DRAWINGS, FINISH SAMPLES, AND/OR PROTOTYPE TO DESIGNER IS REQUIRED FOR REVIEW AND WRITTEN APPROVAL.



TB-08

PROJECT NAME: ZUZU RESTAURANT

OUTDOOR LARGE DINING TABLE
@GARDEN

PROJECT NUMBER: 22-037

4. ALL FURNITURE AND MATERIALS TO BE FLAMEPROOF AS REQUIRED BY LOCAL, STATE AND FEDERAL CODES, INCLUDING STANDARD METHODS OF TESTS AND CLASSIFICATION FOR CIGARETTE IGNITION. ALL FIRE AND FLAME RETARDANTS ARE TO BE WITH ONLY NON-SALINE SOLUTION TO PREVENT CORROSION AND MILDEW OF FABRIC.
5. ALL FINISH SAMPLES TO BE SUBMITTED FOR FINAL APPROVAL PRIOR TO FABRICATION
6. ALL FACE VENEERS SHALL BE MATCHED FOR COLOR AND GRAIN TO PRESENT A UNIFORM APPEARANCE.
7. REFER TO DRAWINGS FOR EXACT LOCATION AND/OR MOUNTING HEIGHTS AND MANNER OF INSTALLATION. IN THE EVENT OF A DISCREPANCY BETWEEN DRAWINGS AND SPECIFICATIONS, PLEASE CONTACT ICRAVE IMMEDIATELY FOR WRITTEN CLARIFICATION.
8. EXTERIOR AND INTERIOR HARDWARE (HINGES, BOLTS, SCREWS, ANCHORS, ETC) TO BE NON-CORROSIVE AND STAINLESS STEEL. ALL EXPOSED HARDWARE TO BE NEATLY MITERED, SANDED, AND SPLINTER FREE.
9. MANUFACTURER TO PROVIDE ALL REQUIRED HARDWARE AND INSTRUCTIONS FOR PROPER INSTALLATION.
10. HEAVY DUTY CONCEALED GLIDES AS REQUIRED. DIAMETER TO BE SIZED ACCORDING TO LEG DIMENSIONS (AS LARGE AS POSSIBLE) WITHOUT BEING VISIBLE. GLIDE COLOR TO MATCH LEG FINISH. GLIDES TO BE COMPATIBLE WITH FLOOR FINISH TO AVOID DAMAGE TO FLOOR. MANUFACTURER TO COORDINATE WITH GC AND DESIGNER PRIOR TO FABRICATION.
11. PURCHASER TO CONFIRM WARRANTIES, AND SUBMIT PERFORMANCE CERTIFICATES AS REQUIRED.

PROJECT NAME: ZUZU RESTAURANT

OUTDOOR LOUNGE TABLE

PROJECT NUMBER: 22-037

ISSUE DATE: 11 OCT 2022

REVISION DATE:

MANUFACTURER: KETTAL
 147 MIRACLE MILE
 CORAL GABLES, FL 33134-, United States
 P: (786) 552-9002 F: (786) 552-9010
 WWW.KETTALGROUP.COM

DISTRIBUTOR:

CONTACT: THOMAS DOWNES
 THOMAS.DOWNES@KETTAL.ES

CONTACT:

TOTAL QTY: 3

LEAD TIME:

ITEM COST: \$0.00

TOTAL COST: \$0.00

DESCRIPTION LOUNGE TABLE
 PRODUCT NAME/# ROLL SIDE TABLE D60
 DIMENSIONS 23.6"D X 26.9"H
 TABLE TOP FINISH 678 BONE
 TABLE BASE 087 TERRA ROSSA
 NOTES MFR TO PROVIDE MOCK UP, DRAWINGS
 AND FINISH SAMPLES FOR REVIEW AND
 APPROVAL



SUBMITTALS:

FINISH SAMPLE

SHOP DRAWINGS

PROTOTYPE

FLAME CERTIFICATION

AREAS:

QTY PER AREA:

PATIO

3

- LOUNGE AREA

3

SPECIAL INSTRUCTIONS:

- FURNITURE IS FOR CONTRACT USE AND IS TO BE FABRICATED AND TO PERFORM ACCORDINGLY. TABLE TOPS MUST HAVE A SCRATCH AND DENT RESISTANT COATING. FURNITURE TO BE BUILT, FINISHED AND SEALED AS REQUIRED FOR HIGH TRAFFIC COMMERCIAL USE.
- PROTOTYPES ARE REQUIRED FOR FINAL APPROVAL OF ALL CUSTOM FURNITURE REGARDLESS OF QUANTITY. APPROVAL OF SHOP DRAWINGS ARE FOR PROTOTYPE FABRICATION ONLY.

PROJECT NAME: ZUZU RESTAURANT

OUTDOOR LOUNGE TABLE

PROJECT NUMBER: 22-037

-
3. FOR ANY ITEM SUPPLIED BY A VENDOR OTHER THAN WHAT IS SPECIFIED ABOVE, SUBMITTAL OF SPECIFICATIONS, SHOP DRAWINGS, FINISH SAMPLES, AND/OR PROTOTYPE TO DESIGNER IS REQUIRED FOR REVIEW AND WRITTEN APPROVAL.
 4. ALL FURNITURE AND MATERIALS TO BE FLAMEPROOF AS REQUIRED BY LOCAL, STATE AND FEDERAL CODES, INCLUDING STANDARD METHODS OF TESTS AND CLASSIFICATION FOR CIGARETTE IGNITION. ALL FIRE AND FLAME RETARDANTS ARE TO BE WITH ONLY NON-SALINE SOLUTION TO PREVENT CORROSION AND MILDEW OF FABRIC.
 5. ALL FINISH SAMPLES TO BE SUBMITTED FOR FINAL APPROVAL PRIOR TO FABRICATION
 6. ALL FACE VENEERS SHALL BE MATCHED FOR COLOR AND GRAIN TO PRESENT A UNIFORM APPEARANCE.
 7. REFER TO DRAWINGS FOR EXACT LOCATION AND/OR MOUNTING HEIGHTS AND MANNER OF INSTALLATION. IN THE EVENT OF A DISCREPANCY BETWEEN DRAWINGS AND SPECIFICATIONS, PLEASE CONTACT ICRAVE IMMEDIATELY FOR WRITTEN CLARIFICATION.
 8. EXTERIOR AND INTERIOR HARDWARE (HINGES, BOLTS, SCREWS, ANCHORS, ETC) TO BE NON-CORROSIVE AND STAINLESS STEEL. ALL EXPOSED HARDWARE TO BE NEATLY MITERED, SANDED, AND SPLINTER FREE.
 9. MANUFACTURER TO PROVIDE ALL REQUIRED HARDWARE AND INSTRUCTIONS FOR PROPER INSTALLATION.
 10. HEAVY DUTY CONCEALED GLIDES AS REQUIRED. DIAMETER TO BE SIZED ACCORDING TO LEG DIMENSIONS (AS LARGE AS POSSIBLE) WITHOUT BEING VISIBLE. GLIDE COLOR TO MATCH LEG FINISH. GLIDES TO BE COMPATIBLE WITH FLOOR FINISH TO AVOID DAMAGE TO FLOOR. MANUFACTURER TO COORDINATE WITH GC AND DESIGNER PRIOR TO FABRICATION.
 11. PURCHASER TO CONFIRM WARRANTIES, AND SUBMIT PERFORMANCE CERTIFICATES AS REQUIRED.

PROJECT NAME: ZUZU RESTAURANT

OUTDOOR DINING TABLE

PROJECT NUMBER: 22-037

ISSUE DATE: 11 OCT 2022

REVISION DATE:

MANUFACTURER: JOHN CELLI CUSTOM FURNITURE
DESIGNS, INC.
35 MASSITOA ROAD
YONKERS, NY 10710, United States
P: 212-213-6999 F: 212-684-2999

DISTRIBUTOR:

CONTACT: LINA ZOLOTUSHKO
P: 212-213-6999 EXT.12 C: 732-740-8876
LINA@JOHNCELLI.COM

CONTACT:

TOTAL QTY: 5

LEAD TIME:

ITEM COST: \$0.00

TOTAL COST: \$0.00

DESCRIPTION: OUTDOOR DINING TABLE
 PRODUCT NAME/#: CUSTOM
 DIMENSIONS: 46"W X 39"D X 30"H
 TABLE TOP FINISH: WHITE ENGINEERED STONE
 TABLE BASE: COLUMN TYPE TEAK BASE
 NOTES: MFR TO PROVIDE MOCK UP, DRAWINGS AND FINISH SAMPLES FOR REVIEW AND APPROVAL



SUBMITTALS:

- FINISH SAMPLE
- SHOP DRAWINGS
- PROTOTYPE
- FLAME CERTIFICATION

AREAS:	QTY PER AREA:
PATIO	5
- BANQUETTE AREA	5

SPECIAL INSTRUCTIONS:

1. FURNITURE IS FOR CONTRACT USE AND IS TO BE FABRICATED AND TO PERFORM ACCORDINGLY. TABLE TOPS MUST HAVE A SCRATCH AND DENT RESISTANT COATING. FURNITURE TO BE BUILT, FINISHED AND SEALED AS REQUIRED FOR HIGH TRAFFIC COMMERCIAL USE.
2. PROTOTYPES ARE REQUIRED FOR FINAL APPROVAL OF ALL CUSTOM FURNITURE REGARDLESS OF QUANTITY. APPROVAL OF SHOP DRAWINGS ARE FOR PROTOTYPE FABRICATION ONLY.



TB-10

PROJECT NAME: ZUZU RESTAURANT

OUTDOOR DINING TABLE

PROJECT NUMBER: 22-037

-
3. FOR ANY ITEM SUPPLIED BY A VENDOR OTHER THAN WHAT IS SPECIFIED ABOVE, SUBMITTAL OF SPECIFICATIONS, SHOP DRAWINGS, FINISH SAMPLES, AND/OR PROTOTYPE TO DESIGNER IS REQUIRED FOR REVIEW AND WRITTEN APPROVAL.
 4. ALL FURNITURE AND MATERIALS TO BE FLAMEPROOF AS REQUIRED BY LOCAL, STATE AND FEDERAL CODES, INCLUDING STANDARD METHODS OF TESTS AND CLASSIFICATION FOR CIGARETTE IGNITION. ALL FIRE AND FLAME RETARDANTS ARE TO BE WITH ONLY NON-SALINE SOLUTION TO PREVENT CORROSION AND MILDEW OF FABRIC.
 5. ALL FINISH SAMPLES TO BE SUBMITTED FOR FINAL APPROVAL PRIOR TO FABRICATION
 6. ALL FACE VENEERS SHALL BE MATCHED FOR COLOR AND GRAIN TO PRESENT A UNIFORM APPEARANCE.
 7. REFER TO DRAWINGS FOR EXACT LOCATION AND/OR MOUNTING HEIGHTS AND MANNER OF INSTALLATION. IN THE EVENT OF A DISCREPANCY BETWEEN DRAWINGS AND SPECIFICATIONS, PLEASE CONTACT ICRAVE IMMEDIATELY FOR WRITTEN CLARIFICATION.
 8. EXTERIOR AND INTERIOR HARDWARE (HINGES, BOLTS, SCREWS, ANCHORS, ETC) TO BE NON-CORROSIVE AND STAINLESS STEEL. ALL EXPOSED HARDWARE TO BE NEATLY MITERED, SANDED, AND SPLINTER FREE.
 9. MANUFACTURER TO PROVIDE ALL REQUIRED HARDWARE AND INSTRUCTIONS FOR PROPER INSTALLATION.
 10. HEAVY DUTY CONCEALED GLIDES AS REQUIRED. DIAMETER TO BE SIZED ACCORDING TO LEG DIMENSIONS (AS LARGE AS POSSIBLE) WITHOUT BEING VISIBLE. GLIDE COLOR TO MATCH LEG FINISH. GLIDES TO BE COMPATIBLE WITH FLOOR FINISH TO AVOID DAMAGE TO FLOOR. MANUFACTURER TO COORDINATE WITH GC AND DESIGNER PRIOR TO FABRICATION.
 11. PURCHASER TO CONFIRM WARRANTIES, AND SUBMIT PERFORMANCE CERTIFICATES AS REQUIRED.

PROJECT NAME: ZUZU RESTAURANT

OUTDOOR RECTANGULAR DINING TABLE

PROJECT NUMBER: 22-037

ISSUE DATE: 11 OCT 2022

REVISION DATE:

MANUFACTURER: KETTAL
 147 MIRACLE MILE
 CORAL GABLES, FL 33134-, United States
 P: (786) 552-9002 F: (786) 552-9010
 WWW.KETTALGROUP.COM

DISTRIBUTOR:

CONTACT: JENNIFER MARIN
 P: 786.552.9002
 jennifer.marin@kettal.es

CONTACT:

TOTAL QTY: 6

LEAD TIME:

ITEM COST: \$0.00

TOTAL COST: \$0.00

DESCRIPTION	DINING TABLE
PRODUCT NAME/#	NET DINING TABLE
DIMENSIONS	18.2"W X 18.2"D X 30"H
TABLE TOP FINISH	TEAK VEINED WOOD
EDGE DETAIL	ROUND EDGE
TABLE BASE	POWDER COATED BLACK METAL
NOTES	MFR TO PROVIDE MOCK UP, DRAWINGS AND FINISH SAMPLES FOR REVIEW AND APPROVAL



SUBMITTALS:

- FINISH SAMPLE
 SHOP DRAWINGS
 PROTOTYPE
 FLAME CERTIFICATION

AREAS:	QTY PER AREA:
PATIO	6
- BANQUETTE AREA	6

SPECIAL INSTRUCTIONS:

- FURNITURE IS FOR CONTRACT USE AND IS TO BE FABRICATED AND TO PERFORM ACCORDINGLY. TABLE TOPS MUST HAVE A SCRATCH AND DENT RESISTANT COATING. FURNITURE TO BE BUILT, FINISHED AND SEALED AS REQUIRED FOR HIGH TRAFFIC COMMERCIAL USE.
- PROTOTYPES ARE REQUIRED FOR FINAL APPROVAL OF ALL CUSTOM FURNITURE REGARDLESS OF QUANTITY. APPROVAL OF SHOP DRAWINGS ARE FOR PROTOTYPE FABRICATION ONLY.



TB-11

PROJECT NAME: ZUZU RESTAURANT

OUTDOOR RECTANGULAR DINING TABLE

PROJECT NUMBER: 22-037

-
3. FOR ANY ITEM SUPPLIED BY A VENDOR OTHER THAN WHAT IS SPECIFIED ABOVE, SUBMITTAL OF SPECIFICATIONS, SHOP DRAWINGS, FINISH SAMPLES, AND/OR PROTOTYPE TO DESIGNER IS REQUIRED FOR REVIEW AND WRITTEN APPROVAL.
 4. ALL FURNITURE AND MATERIALS TO BE FLAMEPROOF AS REQUIRED BY LOCAL, STATE AND FEDERAL CODES, INCLUDING STANDARD METHODS OF TESTS AND CLASSIFICATION FOR CIGARETTE IGNITION. ALL FIRE AND FLAME RETARDANTS ARE TO BE WITH ONLY NON-SALINE SOLUTION TO PREVENT CORROSION AND MILDEW OF FABRIC.
 5. ALL FINISH SAMPLES TO BE SUBMITTED FOR FINAL APPROVAL PRIOR TO FABRICATION
 6. ALL FACE VENEERS SHALL BE MATCHED FOR COLOR AND GRAIN TO PRESENT A UNIFORM APPEARANCE.
 7. REFER TO DRAWINGS FOR EXACT LOCATION AND/OR MOUNTING HEIGHTS AND MANNER OF INSTALLATION. IN THE EVENT OF A DISCREPANCY BETWEEN DRAWINGS AND SPECIFICATIONS, PLEASE CONTACT ICRAVE IMMEDIATELY FOR WRITTEN CLARIFICATION.
 8. EXTERIOR AND INTERIOR HARDWARE (HINGES, BOLTS, SCREWS, ANCHORS, ETC) TO BE NON-CORROSIVE AND STAINLESS STEEL. ALL EXPOSED HARDWARE TO BE NEATLY MITERED, SANDED, AND SPLINTER FREE.
 9. MANUFACTURER TO PROVIDE ALL REQUIRED HARDWARE AND INSTRUCTIONS FOR PROPER INSTALLATION.
 10. HEAVY DUTY CONCEALED GLIDES AS REQUIRED. DIAMETER TO BE SIZED ACCORDING TO LEG DIMENSIONS (AS LARGE AS POSSIBLE) WITHOUT BEING VISIBLE. GLIDE COLOR TO MATCH LEG FINISH. GLIDES TO BE COMPATIBLE WITH FLOOR FINISH TO AVOID DAMAGE TO FLOOR. MANUFACTURER TO COORDINATE WITH GC AND DESIGNER PRIOR TO FABRICATION.
 11. PURCHASER TO CONFIRM WARRANTIES, AND SUBMIT PERFORMANCE CERTIFICATES AS REQUIRED.