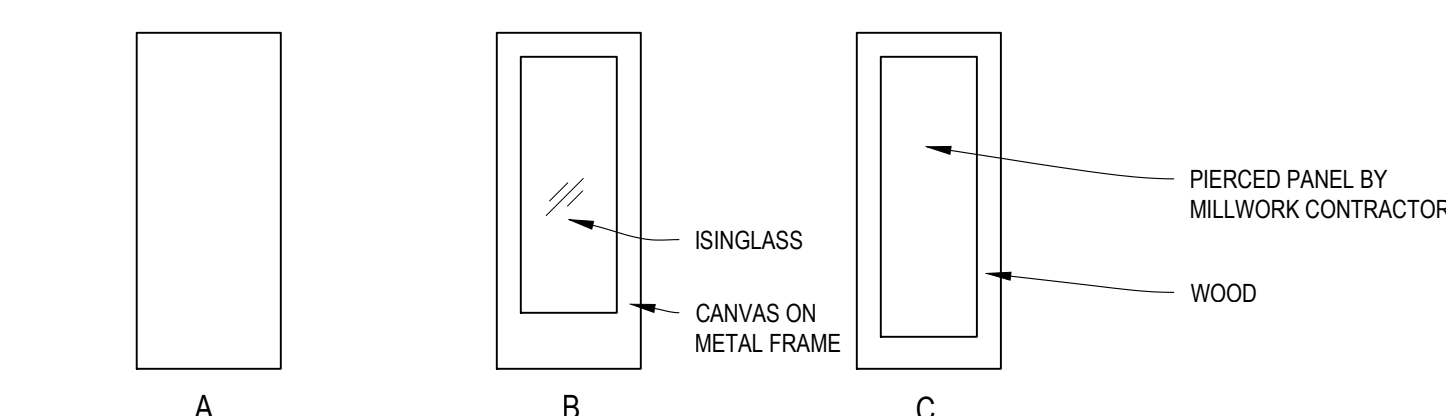


DOOR NUM	DOOR					FRAME			HARDWARE SET	REMARKS
	TYPE	WIDTH	HEIGHT	MATL	FINISH	TYPE	MATL	FINISH		
001	A	3'-0"	7'-0"	SST	BRUSHED	A	HM	PAINT	1	
002	A	3'-0"	7'-0"	HM	PAINT	B	HM	PAINT	2	
003	A	3'-0"	7'-0"	HM	PAINT	B	HM	PAINT	3	
004	A	3'-6"	7'-0"	HM	PAINT	B	HM	PAINT	4	
005	A	3'-0"	7'-0"	HM	PAINT	B	HM	PAINT	5	
101	B	3'-0"	7'-0"	FABRIC/ ISINGLASS	-	-	-	-	-	DOOR BY CANOPY VESTIBULE FABRICATOR
102	A	3'-0"	7'-0"	HM	PAINT	B	HM	PAINT	6	
103	C	2'-6"	7'-0"	WD	PAINT	B	WD	PAINT	7	BY MILLWORK CONTRACTOR
104	C	3'-0"	7'-0"	WD	PAINT	B	WD	PAINT	7	BY MILLWORK CONTRACTOR
105	C	3'-0"	7'-0"	WD	PAINT	B	WD	PAINT	7	BY MILLWORK CONTRACTOR

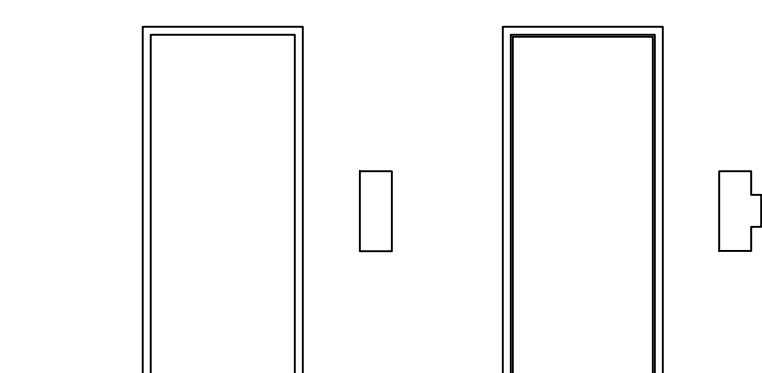
**HARDWARE SCHEDULE**

- SET 1  
-BY DOOR MANUFACTURER
- SET 2  
-1/2 PR HINGES  
-PRIVACY LATCHSET  
-WALL BUMPER
- SET 3  
-1/2 PR HINGES  
-PRIVACY LATCHSET  
-CLOSER  
-WALL BUMPER
- SET 4  
-1/2 PR HINGES  
-MECHANICAL ROOM LATCHSET  
-CLOSER
- SET 5  
-1/2 PR HINGES  
-PASSAGE LATCHSET  
-CLOSER
- SET 6  
-1/2 PR HINGES  
-PUSH PULL  
-CLOSER  
-WALL BUMPER
- SET 7  
-1/2 PR SELF CLOSING HINGES  
-PRIVACY LATCHSET

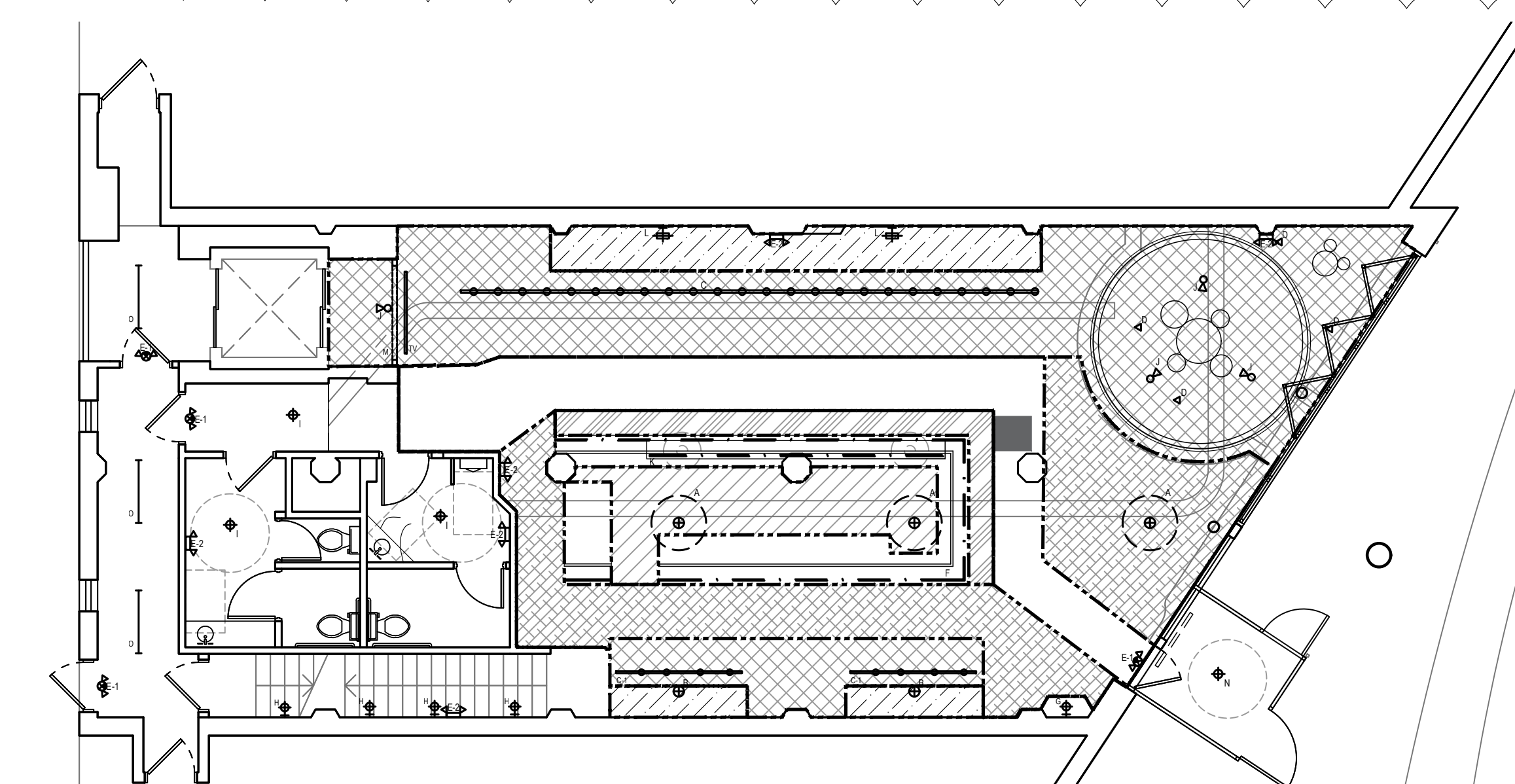
**DOOR DATA**



**DOOR TYPES**



**FRAME TYPES**



**1 OCCUPANCY UPPER FLOOR**  
scale: 1/8" = 1'-0"

**COMBINED FLOOR OCCUPANT LOAD CALCULATIONS**

	DESCRIPTION	OCC PER TABLE 1004.1.2	OCC
A	DINING - TABLES AND CHAIRS	587 SF @ 15 SF NET EA. = 39.13	40
B	DINING - BOOTH	0 LF @ 2.0 LF NET EA. = 0	0
B	DINING - SETTEE	46 LF @ 1.5 LF NET EA. = 30.67	31
C	BAR SEATING	59 SF @ 7 SF NET EA. = 8.43	9
D	STANDING	312 SF @ 5 SF NET EA. = 62.4	63
E	KITCHEN	255 SF @ 200 SF GROSS EA. = 1.3	2
F	STORAGE	1135 SF @ 300 SF GROSS EA. = 3.78	4
G	BUSINESS	87 SF @ 100 SF GROSS EA. = 0.87	1
<b>TOTAL OCCUPANT LOAD</b>			<b>150</b>

**PLUMBING REQUIREMENTS**

WATER CLOSETS		LAVATORIES	
M	W	M	W
150/2 = 75 75/75 = 1	150/2 = 75 75/75 = 1	150/2 = 75 75/200 = 0.375	150/2 = 75 75/200 = 0.375
1	1	0.375	0.375
1	1	1	1
2	3	1	2

REQUIRED  
PROVIDED

**UPPER FLOOR OCCUPANT LOAD CALCULATIONS**

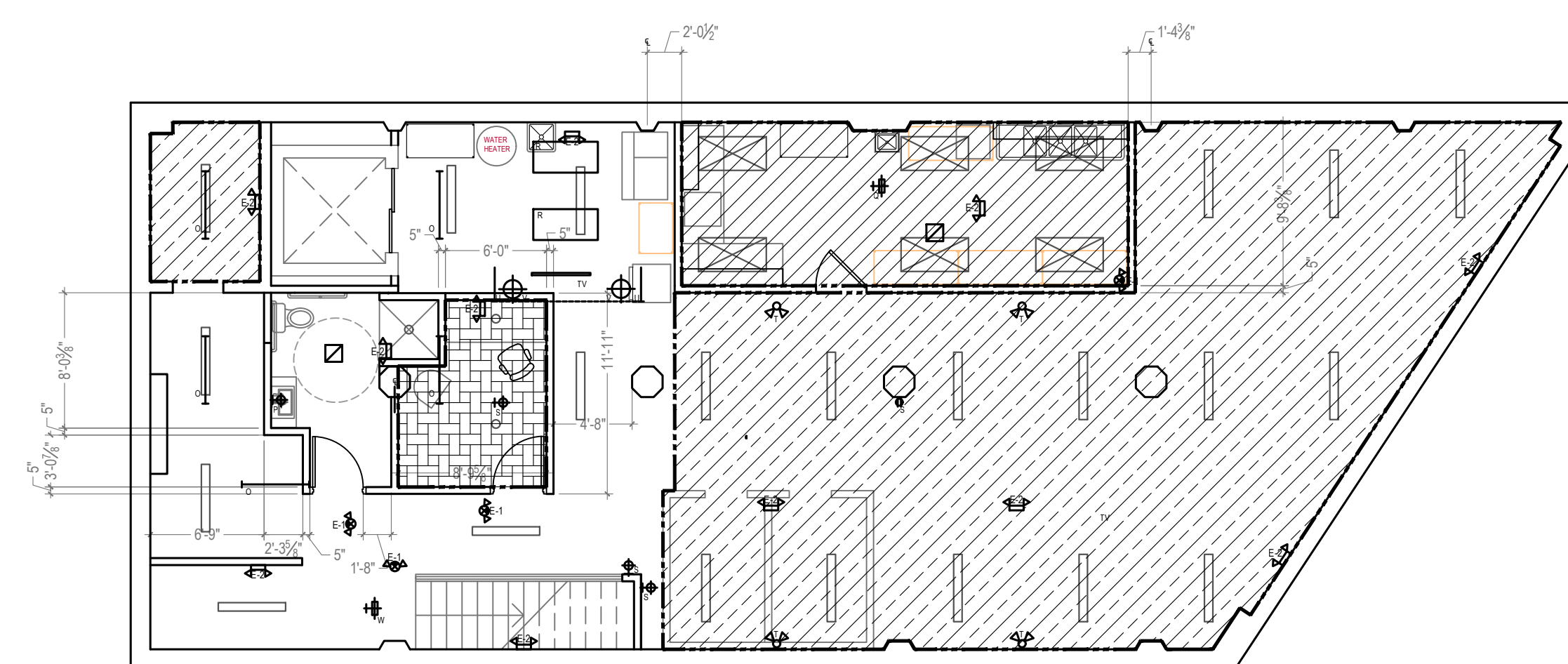
	DESCRIPTION	OCC PER TABLE 1004.1.2	OCC
A	DINING - TABLES AND CHAIRS	587 SF @ 15 SF NET EA. = 39.13	40
B	DINING - BOOTH	0 LF @ 2.0 LF NET EA. = 0	0
B	DINING - SETTEE	46 LF @ 1.5 LF NET EA. = 30.67	31
C	BAR SEATING	59 SF @ 7 SF NET EA. = 8.43	9
D	STANDING	312 SF @ 5 SF NET EA. = 62.4	63
E	KITCHEN	0 SF @ 200 SF GROSS EA. = 0	0
F	STORAGE	0 SF @ 300 SF GROSS EA. = 0	0
G	BUSINESS	0 SF @ 100 SF GROSS EA. = 0	0
<b>TOTAL OCCUPANT LOAD</b>			<b>143</b>

**BASEMENT OCCUPANT LOAD CALCULATIONS**

	DESCRIPTION	OCC PER TABLE 1004.1.2	OCC
A	DINING - TABLES AND CHAIRS	0 SF @ 15 SF NET EA. = 0	0
B	DINING - BOOTH	0 LF @ 2.0 LF NET EA. = 0	0
B	DINING - SETTEE	0 LF @ 1.5 LF NET EA. = 0	0
C	BAR SEATING	0 SF @ 7 SF NET EA. = 0	0
D	STANDING	0 SF @ 5 SF NET EA. = 0	0
E	KITCHEN	255 SF @ 200 SF GROSS EA. = 1.3	2
F	STORAGE	1135 SF @ 300 SF GROSS EA. = 3.78	4
G	BUSINESS	87 SF @ 100 SF GROSS EA. = 0.87	1
<b>TOTAL OCCUPANT LOAD</b>			<b>7</b>

**BASEMENT EXITING CALCULATIONS:**

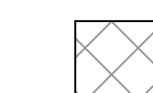
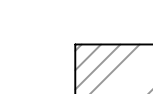




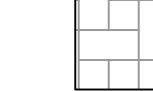
AS PER 2015 MICHIGAN BUILDING CODE TABLE 1006.3.2(2) "BUILDINGS WITH ONE EXIT OR ACCESS TO ONE EXIT FOR OTHER OCCUPANCIES"  
OCCUPANCY USE GROUP "A" OCCUPANT LOAD DOES NOT EXCEED 49 AND MAXIMUM COMMON PATH OF EGRESS TRAVEL DISTANCE DOES NOT EXCEED 75 FEET  
BASEMENT LEVEL DOES NOT EXCEED THESE PARAMETERS.



**2 OCCUPANCY LOWER FLOOR**  
scale: 1/8" = 1'-0"

1/24/2023

**HATCH LEGEND**

-  DINING-TABLES & CHAIRS
-  BAR SEATING
-  STANDING
-  KITCHEN
-  STORAGE/MECH
-  BUSINESS
-  DINING