

City of Detroit GSD

AFT Admin Kitchen Ventilation

Detroit

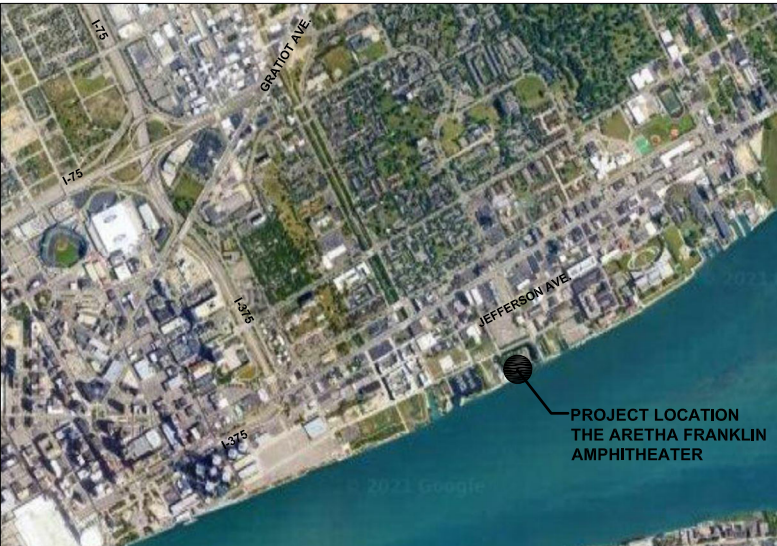
PERMITS / CONSTRUCTION - 12/21/2022

HAMILTON ANDERSON PROJECT NUMBER: 202022.01 CCM02

HamiltonAnderson
architecture landscape architecture urban design

Hamilton Anderson Associates, Inc
1435 Randolph Suite 200
Detroit, Michigan 48226
p 313 964 0270 f 313 964 0170
www.hamilton-anderson.com

LOCATION MAP:



SITE MAP:



PROJECT CONTACTS:

OWNER:
City of Detroit
General Services Department
115 Erksine St.
Detroit, MI 48201
(313) 628-0900
www.detroitmi.gov

ARCHITECT/LANDSCAPE ARCHITECT:
Hamilton Anderson Associates, Inc.
1435 Randolph
Suite 200
Detroit, MI 48226
(313) 964-0270
www.hamilton-anderson.com

ELECTRICAL/MECHANICAL ENGINEER:
Strategic Energy Solutions, Inc.
4000 West Eleven Mile Rd.
Berkley, MI 48072
(248) 399-1900
www.sesnet.com/

SHEET INDEX:

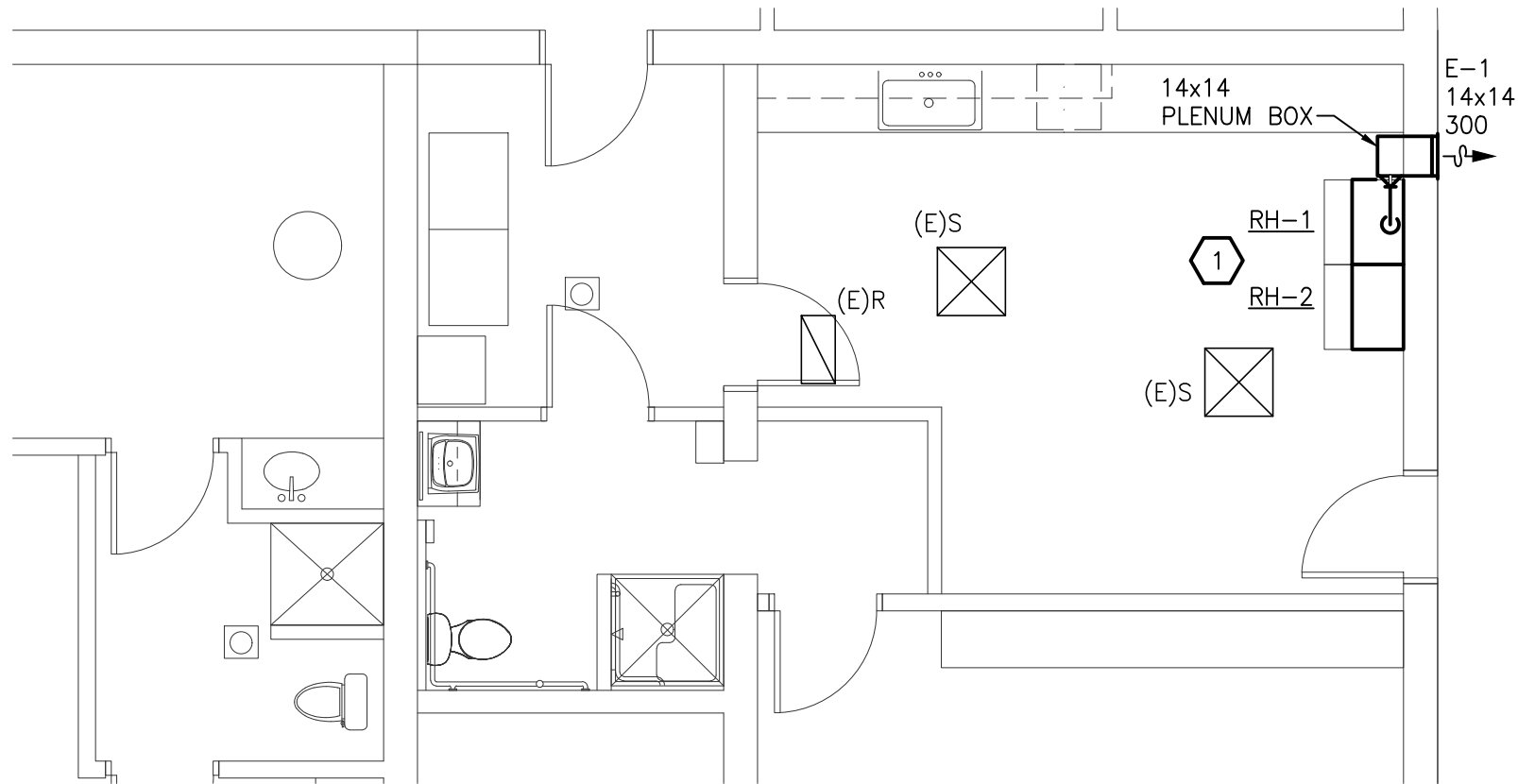
C0 COVER SHEET
M1 HVAC PLAN AND KITCHEN VENTILATION
M2 MECHANICAL SCHEDULES AND DETAILS
E1 ELECTRICAL PLAN

Drawn: S:\21_0025_06_AFA_Guest_Services\Phase 2 EH\CAD\Mech\21002506_P12_MECHANICAL_SHEETS.dwg
 Plotted: Wed, 21 Dec 2022 4:41pm by flu



HVAC PLAN AND GENERAL INFORMATION

SCALE: 3/16" = 1'-0"



SHEET INDEX	
SHT NO	DESCRIPTION
M1	HVAC PLAN AND GENERAL INFORMATION
M2	MECHANICAL SCHEDULES

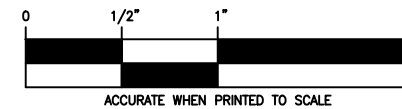
HVAC GENERAL NOTES

1. THESE DRAWINGS ARE DIAGRAMMATIC AND INDICATE THE GENERAL EXTENT OF THE WORK. PROVIDE HVAC SYSTEMS COMPLETE PER SMACNA STANDARDS, AND PER APPLICABLE CODES INCLUDING ALL NECESSARY OFFSETS, FITTINGS, SPECIAL RADIUS OR MITERED ELBOWS WHICH ARE REQUIRED DUE TO SPACE CONSTRAINTS OR STRUCTURAL CONDITIONS OR OTHER CONDITIONS.
2. CONTRACTOR SHALL COORDINATE THEIR WORK WITH THE WORK OF ALL OTHER TRADES. ALL DUCTWORK IS TO BE ROUTED AS HIGH AS POSSIBLE. PROVIDE ACCESS AROUND ALL NEW EQUIPMENT PER MANUFACTURER'S RECOMMENDATIONS. VERIFY ALL CLEARANCES PRIOR TO THE FABRICATION OF ANY WORK.
3. DUCTWORK SHALL NOT BE INSTALLED IN A LOCATION THAT RESTRICTS THE ACCESS TO MECHANICAL DEVICES REQUIRING ACCESS.
4. THE CONTRACTOR SHALL PROVIDE ALL MISCELLANEOUS SUPPORTING STEEL, ETC. FOR THE PROPER INSTALLATION OF ALL MECHANICAL SYSTEMS.
5. COORDINATE WALL PENETRATIONS, LOUVER SIZES, LOCATIONS ETC. WITH ARCHITECTURAL TRADES. SEAL ALL DUCT PENETRATIONS.
6. THE CEILING SPACE IS USED AS A RETURN AIR PLENUM. NO PLASTIC MATERIALS INCLUDING PVC PIPING, CONDUIT, WIRING, ETC. SHALL BE USED. ALL MATERIAL IN THE CEILING SPACE IS TO BE PLENUM RATED.
7. CONNECTION TO EQUIPMENT SHALL BE VERIFIED WITH MANUFACTURER'S CERTIFIED DRAWINGS. TRANSITIONS TO ALL EQUIPMENT SHALL BE VERIFIED AND PROVIDED FOR EQUIPMENT FURNISHED.



KEYED NOTES

1. CONVERTIBLE DOMESTIC RANGE HOODS (BROAN F40000 OR EQUAL) FURNISHED BY ARCH, INSTALLED BY MECH CONTRACTOR. CENTER HOODS OVER EXISTING RANGES. VERIFY EXACT LOCATION IN FIELD PRIOR TO INSTALL. RH-1 TO BE DUCTED TO THE OUTSIDE WITH A 8"Ø EA DUCT. PROVIDE TRIM FOR DUCT PENETRATION AT EXISTING LAY-IN CEILING (@ +/- 9'-0" A.F.F.). RH-2 TO TO BE INSTALL AS RE-CIRCULATING HOOD. REFER TO PRODUCT INSTALLATION MANUAL FOR FURTHER INFORMATION.



12/21/2022



HAMILTON ANDERSON, INC
 1435 Randolph Suite 200
 Detroit, Michigan 48226

ISSUED	DATE

ISSUED	DATE
BUILDING PERMIT	12/21/2022

CHECKED	JMC
DRAWN	PAC

PROJECT: AFT ADMIN BUILDING
 KITCHEN VENTILATION
 SES PROJECT # 2021 0025 06

SHEET TITLE:
 HVAC PLAN AND
 GENERAL
 INFORMATION

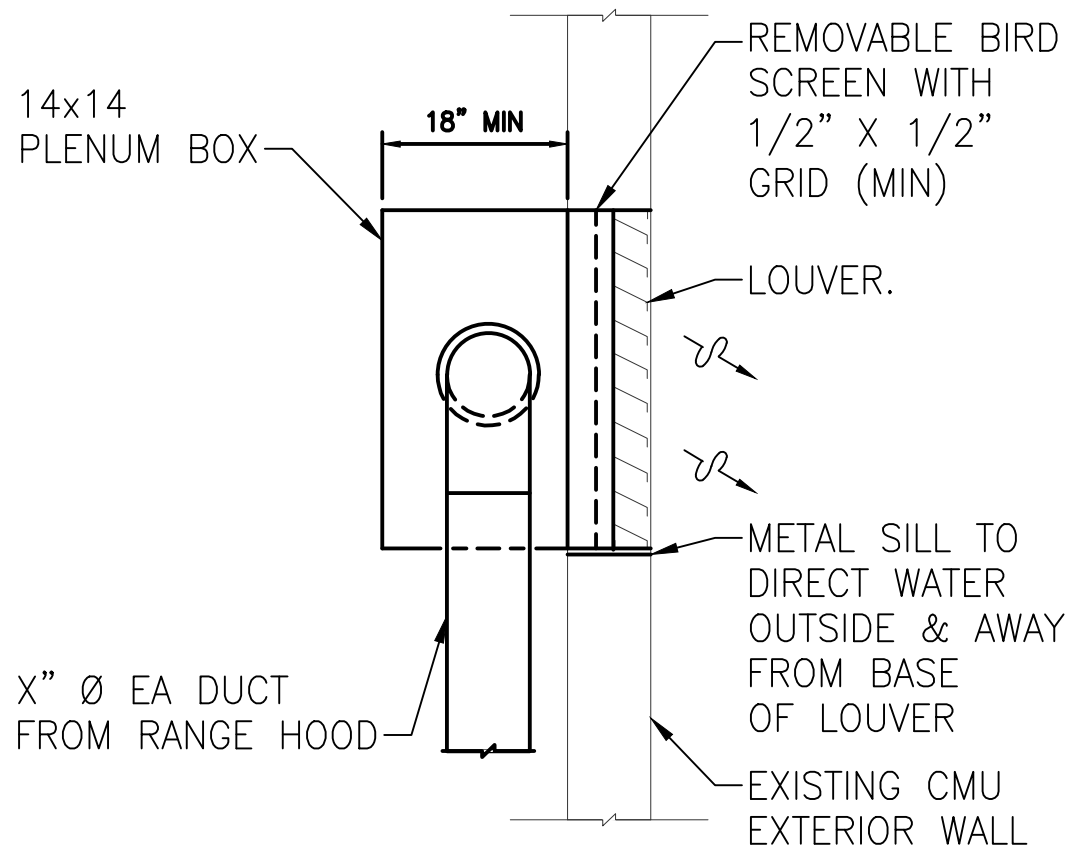
SHEET NUMBER:
M1

GRILLE, REGISTER AND DIFFUSER SCHEDULE

UNIT ID	FACE SIZE	NECK SIZE	MOUNTING	ACCESSORY	FINISH	MATERIAL	MANUFACTURER / MODEL NO.	REMARKS
E-1	NECK+2	SEE PLANS	SIDEWALL	-	WHITE	STEEL	GREENHECK / ESD-635	PAINT GRILLE TO MATCH EXISTING EXTERIOR LOUVERS.

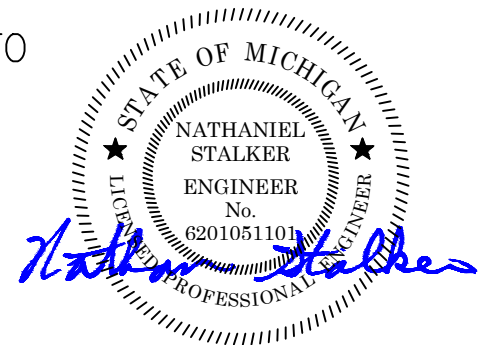
NOTES:

- OVERALL SIZE OF OPENING SHOULD BE 1/4 " AND 1/2 " GREATER IN BOTH DIRECTIONS THAN EXTERNAL DIMENSIONS OF LOUVER FOR SIZES ≤ 48" AND > 48", RESPECTIVELY.
- MAX LOUVER WIDTH ≤ 5FT, USE MULLION CONNECTED SECTIONS FOR GREATER WIDTHS.
- CAULK AND SEAL AROUND PERIMETER OF LOUVER SECTION AT WALL. FILL ALL VOIDS BETWEEN DUCT AND CMU WITH MINERAL WOOL INSULATION.
- PROVIDE ALUMINUM OR GALV EXPANDED BIRD EXCLUSION SCREEN ON INSIDE (OR OUTSIDE) OF LOUVER. (MIN FREE AREA 80% OF GROSS AREA) ATTACH TO OUTSIDE IF BLADE SEPARATION IS > 2 1/2 ".
- CONSTRUCT EXTRUDED LOUVER OF NON-FERROUS CORROSION RESISTANT MATERIAL AND SECURE WITH SS OR ALUMINUM FASTENERS.
- DO NOT OVERACT OPENING BEYOND DIMENSIONS INDICATED TO MAINTAIN STRUCTURAL INTEGRITY OF EXISTING CMU WALL.



EXHAUST AIR LOUVER WITH PLENUM BOX DETAIL

NO SCALE



ISSUED	DATE

ISSUED	DATE
BUILDING PERMIT	12/21/2022

PROJECT:	PROJECT #	DRAWN	CHECKED
AFT ADMIN BUILDING KITCHEN VENTILATION	2021 0025 06	PAC	JMC

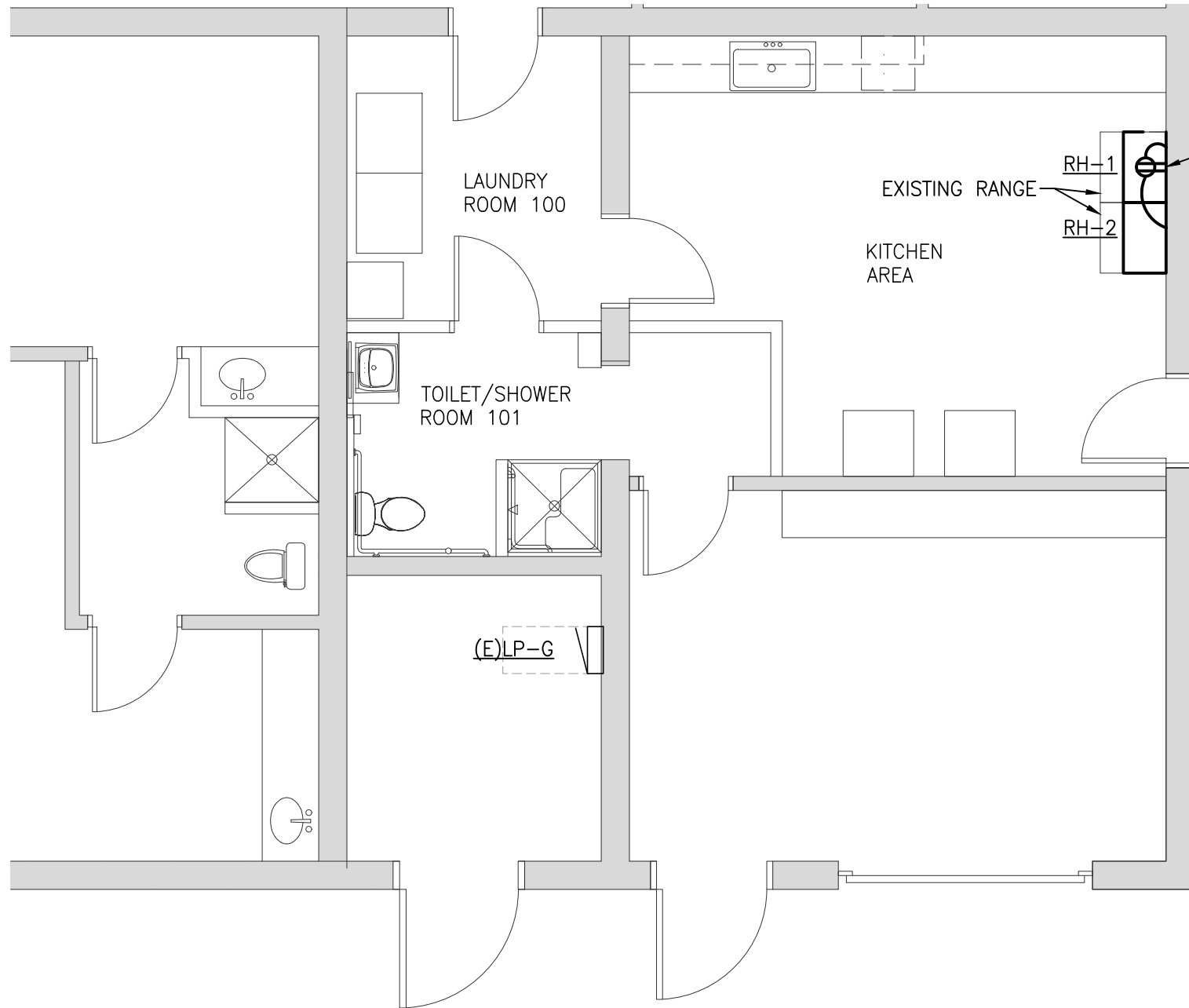
SHEET NUMBER	SHEET TITLE
M2	MECHANICAL SCHEDULES AND DETAILS

Drawn: SA\21_0025_06_AFA_Guest_Services\Phase 2_EH\CAD\Elec\21002506_PH2_ELECTRICAL_SHEETS.dwg
 Plotted: Wed, 21 Dec 2022 - 4:41pm by fu



ELECTRICAL PLAN

SCALE: 3/16" = 1'-0"



PROVIDE A DUPLEX RECEPTACLE FOR RH-1 AND RH-2. LOCATE RECEPTACLE PER MANUFACTURER INSTRUCTIONS. PROVIDE NEW 120V, 1PH, 20A BREAKER IN PANEL LP-G, BREAKER 31 FED WITH 2#12, 1#12G IN 3/4" C.

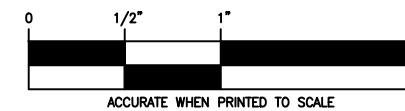
	CONNECTED	DEMAND	TOTAL
RH-1:	MOTOR 300W	* 1.25%	= 375W
	LAMP 75W	* 1.25%	= 93W
RH-2:	MOTOR 300W	* 1.00%	= 300W
	LAMP 75W	* 1.25%	= 93W
TOTAL			= 861W

APPROXIMATE ELECTRICAL LOAD ADDED:
861W @120V.

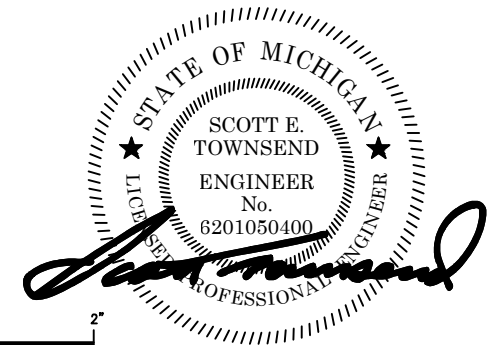
DRAWING INDEX	
SHT NO	DESCRIPTION
E1	ELECTRICAL PLAN

POWER GENERAL NOTES

- ALL CONDUITS SERVING 120 VOLTS OR GREATER SHALL INCLUDE A GROUND WIRE.
- ALL 120 VOLT CIRCUITS SHALL UTILIZE A SEPARATE NEUTRAL.
- ROUTE ALL CONDUITS CONCEALED UNLESS APPROVED BY OWNER.



ACCURATE WHEN PRINTED TO SCALE



12/21/2022



HAMILTON ANDERSON, INC
 1435 Randolph Suite 200
 Detroit, Michigan 48226

ISSUED	DATE

ISSUED	DATE
BUILDING PERMIT	12/21/2022

CHECKED	JMC
DRAWN	FKU

PROJECT: AFT ADMIN BUILDING
 KITCHEN VENTILATION

SES PROJECT # 2021 0025 06

SHEET TITLE
 ELECTRICAL PLAN

SHEET NUMBER
E1