

# WCI

---

Contractors, Inc.

General Contractors  
Site Development

20210 Conner  
Detroit, MI 48234

Phone: (313) 368-2100  
Fax: (313) 368-8986

February 6, 2023

City of Detroit – Planning & Development Department  
2 Woodward Ave, Suite 808  
Detroit, MI 48226

RE: Aretha Franklin Amphitheater – Guest Services / Administration Building Exterior Improvements

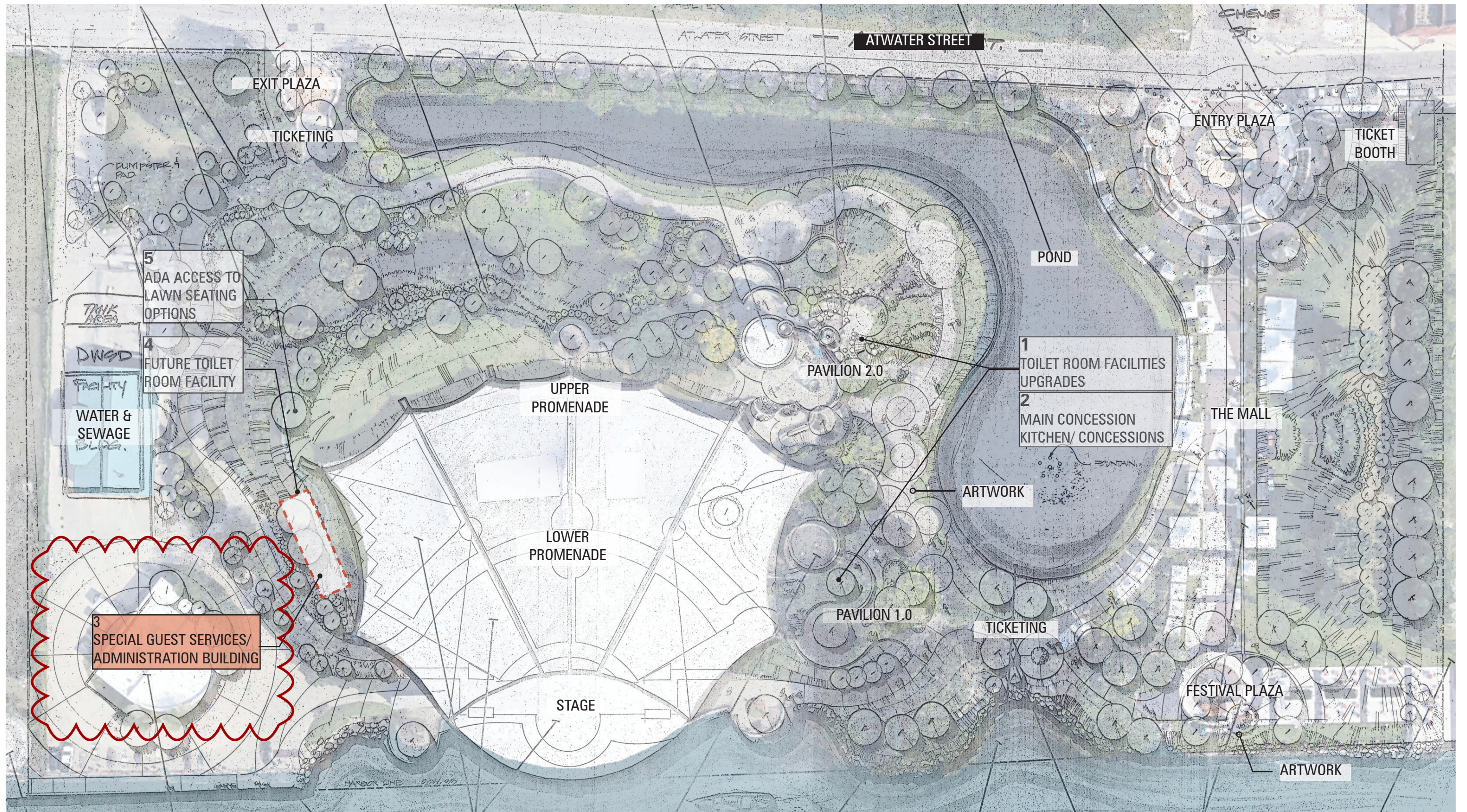
WCI Contractors is under contract by the City of Detroit to perform various Capital Improvements at The Aretha Franklin Amphitheater. We are currently working at the facility on various site repairs and improvements, previously submitted and approved under COA 20-6820, approved on August 29, 2020 and expanded in scope on October 15, 2020.

This submission request is for additional work items added to the Guest Services / Administration building. The scope includes the following:

1. Repaint exterior of the building to match the existing gray color.
2. Replace the four (4) Fixed Steel Framed office windows with Aluminum framed windows. The current windows are all fixed panes that do not open. The proposed windows will have an opening center section to permit fresh air in the office area.
3. Improve room ventilation in the Guest Services Food Warming Area by installing an exhaust fan that exhausts through the Western Exterior Wall. Exhaust louver to be elevated to below the roof line.

The windows that are being replaced due to observed corrosion of the hollow metal steel frames and for the benefit of being able to open. The existing windows have a painted steel frame the matches the Deep Lagoon color found throughout the site. The proposed windows will be clear anodized aluminum frames to reduce maintenance requirements of a painted finish.

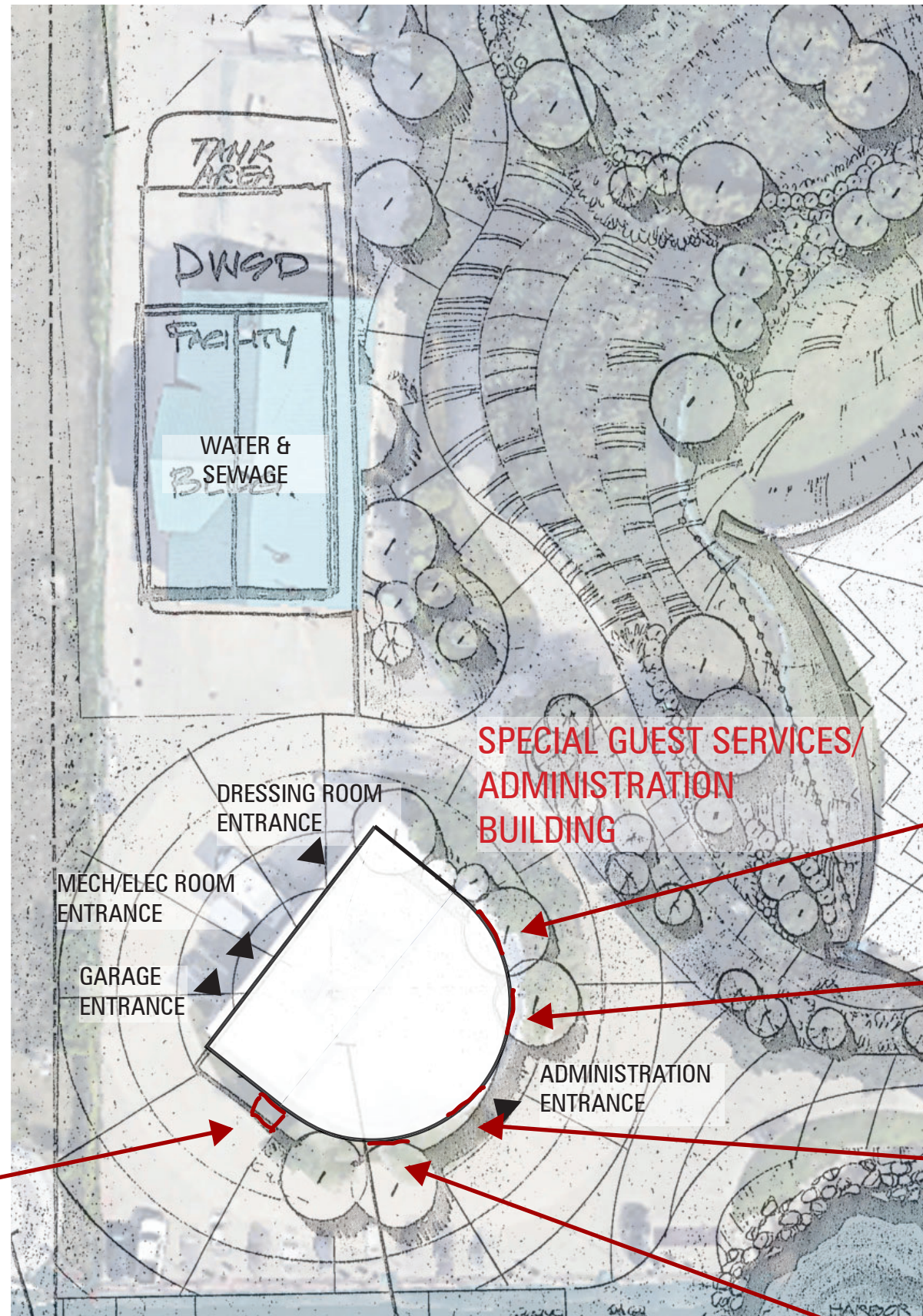




# COMPOSITE SITE PLAN







Exhaust fan wall penetration

SPECIAL GUEST SERVICES/  
ADMINISTRATION  
BUILDING

Window 1

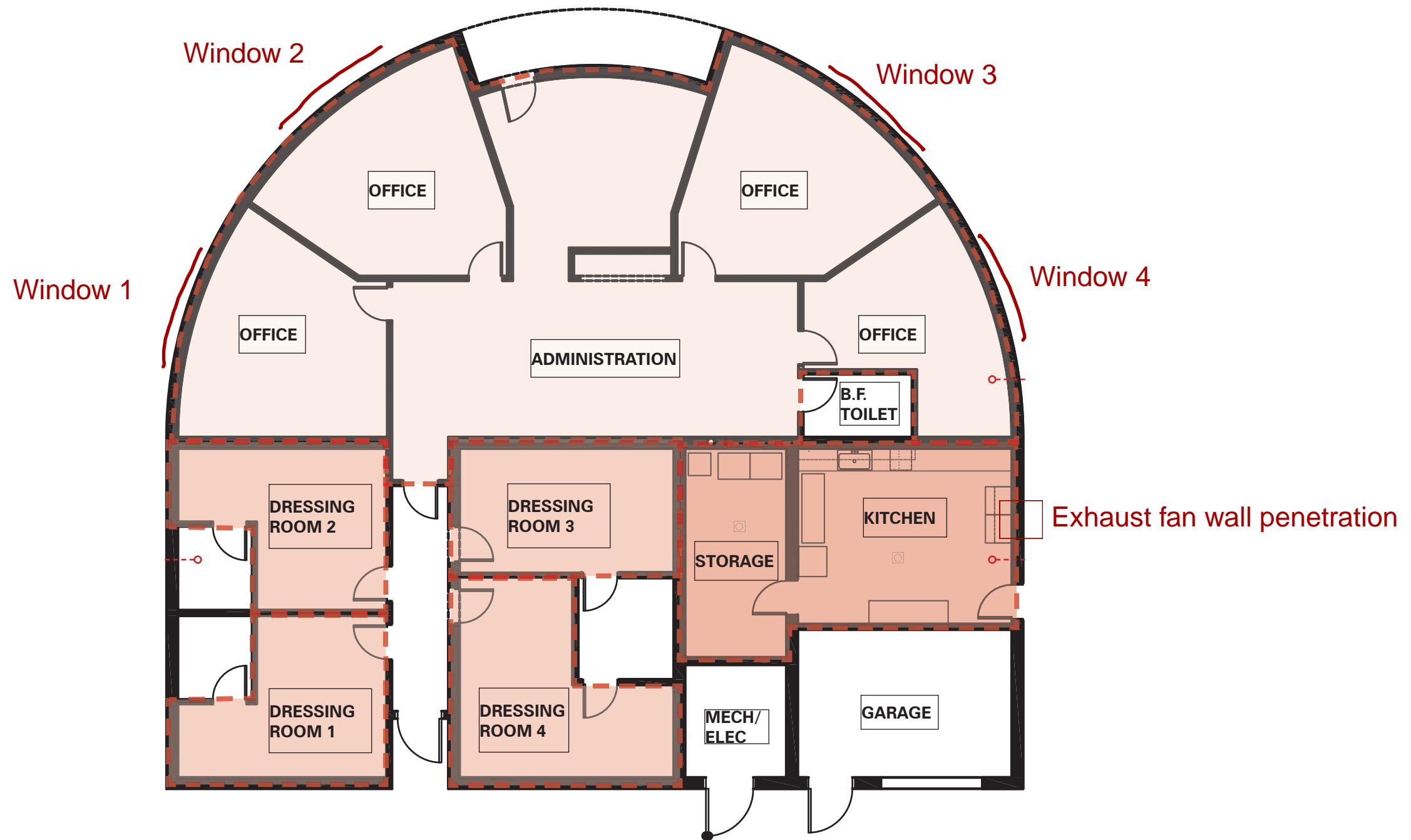
Window 2

Window 3

Window 4

# SPECIAL GUEST SERVICES/ ADMINISTRATION BUILDING SITE PLAN





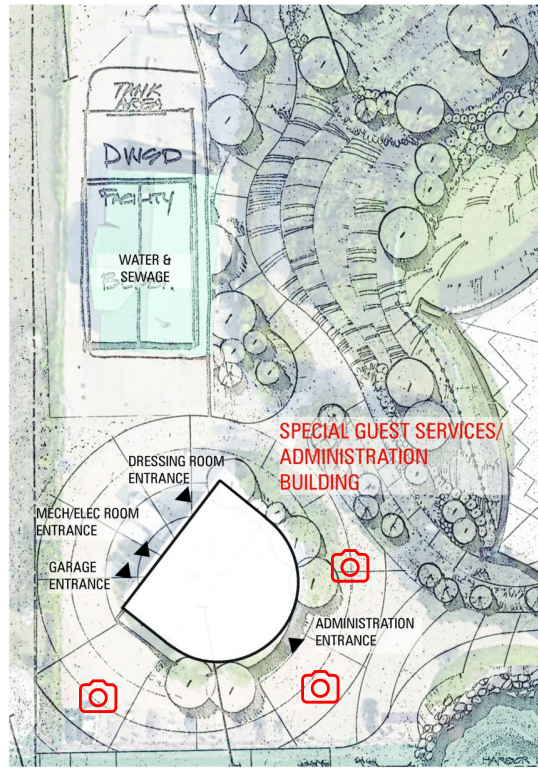
# OVERALL PLAN\_EXISTING CONDITIONS

FLOOR PLAN 3/32" = 1'-0"



NORTH

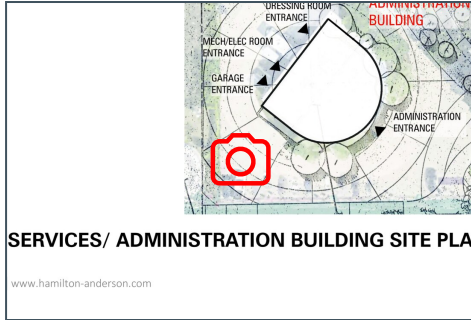




**SPECIAL GUEST SERVICES/ ADMINISTRATION BUILDING SITE PLAN**







**Created:**  
mgmt@wcicontractorsinc.com  
Feb 6, 2023 11:15 AM

**Last Updated:**  
mgmt@wcicontractorsinc.com  
Feb 6, 2023 11:21 AM

Approximate  
Exhaust Location

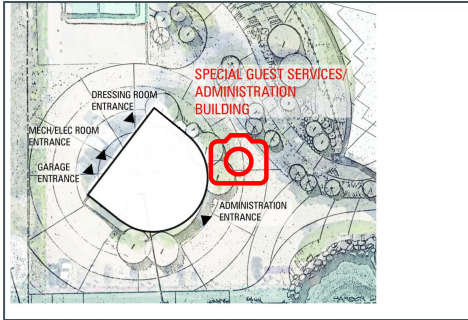


IMG\_2523  
**Taken on:**  
Oct 20, 2022 10:08 AM  
**Added on:**  
Feb 6, 2023 11:16 AM  
**Added by:**  
Thomas Maliszewski III



IMG\_2522  
**Taken on:**  
Oct 20, 2022 10:08 AM  
**Added on:**  
Feb 6, 2023 11:16 AM  
**Added by:**  
Thomas Maliszewski III





**Created:**  
mgmt@wcicontractorsinc.com  
Feb 6, 2023 11:17 AM

**Last Updated:**  
mgmt@wcicontractorsinc.com  
Feb 6, 2023 11:21 AM



IMG\_2533

**Taken on:**  
Oct 20, 2022 10:09 AM  
**Added on:**  
Feb 6, 2023 11:18 AM  
**Added by:**  
Thomas Maliszewski III



IMG\_2532

**Taken on:**  
Oct 20, 2022 10:09 AM  
**Added on:**  
Feb 6, 2023 11:18 AM  
**Added by:**  
Thomas Maliszewski III



## Aretha Franklin Captial Improvements

2600 Atwater Street, Detroit, Michigan

W C I  
Contractors  
Inc.



IMG\_2530

**Taken on:**

Oct 20, 2022 10:09 AM

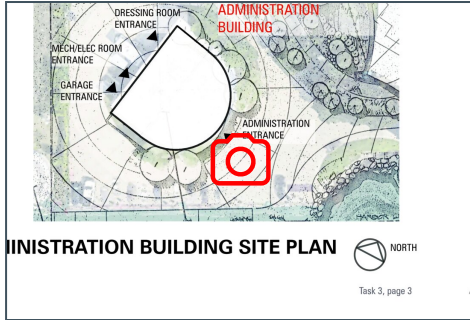
**Added on:**

Feb 6, 2023 11:18 AM

**Added by:**

Thomas Maliszewski III





**Created:**

mgmt@wcicontractorsinc.com

Feb 6, 2023 11:16 AM

**Last Updated:**

mgmt@wcicontractorsinc.com

Feb 6, 2023 11:21 AM



IMG\_2527

**Taken on:**  
Oct 20, 2022 10:09 AM

**Added on:**  
Feb 6, 2023 11:17 AM

**Added by:**  
Thomas Maliszewski III



IMG\_2526

**Taken on:**  
Oct 20, 2022 10:09 AM

**Added on:**  
Feb 6, 2023 11:17 AM

**Added by:**  
Thomas Maliszewski III



## Aretha Franklin Captial Improvements

2600 Atwater Street, Detroit, Michigan

W C I  
Contractors  
Inc.



IMG\_2525

**Taken on:**

Oct 20, 2022 10:09 AM

**Added on:**

Feb 6, 2023 11:17 AM

**Added by:**

Thomas Maliszewski III



# ARETHA FRANKLIN ADMIN

2600 ATWATER ST. DETROIT, MI 48207

## SHOP DRAWING PACKAGE

PREFERRED  
GLASS INC.

6215 KING RD.  
MARINE CITY, MICHIGAN 48039  
P: 810.420.0753  
F: 810.420.0754



www.MPDRAFTING.com  
P: 248.522.7096  
F: 248.522.7030

ARCHITECT:

ARCHITECT NOTE:  
ALL NOTES REQUESTING VERIFICATION,  
CONFIRMATION, OR INFORMATION THAT ARE  
NOT ANSWERED ARE ASSUMED TO BE  
CORRECT AS SHOWN ON THESE DRAWINGS.

STAMPS/  
SUBMITTALS:

REVISION	DATE
0	01.04.23
-	-
-	-
-	-
-	-

PROJECT NUMBER:  
**22-295**

PROJECT NAME:  
ARETHA FRANKLIN  
ADMIN

SHEET DESCRIPTION:  
**COVER SHEET**

SHEET:  
**C1**

### GLAZING SCHEDULE

GL-1	1/4" SN68 #2 TEMPERED 1/2" AIRSPACE (MILL SPACER) 1/4" CLEAR TEMPERED  COATING: NONE

### SYSTEM NOTES

**SYSTEMS TYPES**  
SYSTEM #1: TUBELITE T14000 1 (2" X 4 1/2") STOREFRONT SYSTEM  
SYSTEM #2: TUBELITE CW 3700 OPERABLE WINDOW

**METAL FINISHES**  
CLASS 2 CLEAR ANODIZED

**SEALANT TYPES**  
TBD

**STRUCTURE BY OTHERS**  
THE BUILDING STRUCTURE AND COMPONENTS THEREOF MUST BE CAPABLE OF SAFELY CARRYING THE LOADS IMPOSED UPON IT BY THE SYSTEMS DETAILED, INCLUDING BUT NOT LIMITED TO DEAD LOADS OF THE SYSTEMS, WIND LOADINGS, THERMAL LOADINGS, SEISMIC LOADINGS, SNOW LOADINGS AND LIVE LOADINGS.

**NOTES:**  
THESE SHOP DRAWINGS HAVE BEEN PREPARED BASED ON ARCHITECTURAL DRAWINGS: 12.19.22

### ENGINEERING

P.E. STRUCTURAL REVIEW INCLUDED: YES  NO

TYPICAL ENGINEERING NOTE:

ENGINEERING REVIEW (IF REQUIRED) WILL BE PROVIDED AFTER 1ST SUBMITTAL APPROVAL OF THESE SHOP DRAWINGS. ALL APPLICABLE INFORMATION BELOW, SYSTEM REVIEW, REINFORCEMENT, FASTENERS, LOADS, ETC. WILL BE PROVIDED AT THAT TIME.

ARCHITECT NOTE: PLEASE VERIFY ALL INFORMATION BELOW

DESIGN LOADS: (PER ----)  
BASIC WINDSPEED: -  
IMPORTANCE FACTOR: -  
EXPOSURE CATEGORY: -  
BUILDING HEIGHT: -  
TYPICAL WINDLOAD: -  
CORNER WINDLOAD: -  
SNOW LOADS: -  
ALLOWABLE DEFLECTION: - L/175 (SPAN < 13'-6"), L/240+1/4" (SPAN >= 13'-6")

### SYMBOLS

- GLAZING IDENTIFICATION	- WORK POINT
- DETAIL IDENTIFICATION /PAGE NUMBER	- ELEVATION BENCHMARK
- COLUMN LINE	- DEAD LOAD ANCHOR
- SECTION	- WIND LOAD ANCHOR
- VIEW	- REVISION NUMBER CALL-OUT
- SCHEDULED HARDWARE	- STEEL CALL-OUT

R.O. - ROUGH OPENING	N.T.S. - NOT TO SCALE
D.O. - DOOR OPENING	F.F. - FINISH FLOOR
D.L.O. - DAY LIGHT OPENING	V.I.F. - VERIFY IN FIELD
S.F.O. - STOREFRONT OPENING	DL - DEADLOAD
C.W.O. - CURTAINWALL OPENING	WL - WINDLOAD
G.S. - GLASS SIZE	E.O.G - EDGE OF GLASS
F.S. - FRAME SIZE	T/O - TOP OF
W.P. - WORK POINT	B/O - BOTTOM OF
CL - CENTER LINE	REF. - REFERENCE

### SHEET INDEX

C1	COVER SHEET
E1	ELEVATION
D1 THRU D2	DETAILS

### DIMENSION VERIFICATION

FIELD VERIFIED:   
GUARANTEED DIMENSIONS:

### DRAWING NOTES

- MP DRAFTING & DESIGN AND THE CUSTOMER WILL ASSUME NO RESPONSIBILITY FOR ERRORS RESULTING FROM THE USE OF THESE DRAWINGS BY OTHER TRADES.
  - FINAL APPROVAL BY THE GENERAL CONTRACTOR CONSTITUTES ACCEPTANCE OF ALL DEVIATIONS TO THE CONTRACT DOCUMENTS MADE BY MP DRAFTING & DESIGN AND THE CUSTOMER IN THESE DRAWINGS.
  - THESE DRAWINGS REPRESENT MP DRAFTING'S AND THE CUSTOMER'S INTERPRETATION OF THE APPLICATION OF PRODUCTS TO THIS PROJECT IN FUNCTIONAL COMPLIANCE WITH THE ARCHITECT'S DRAWINGS AND SPECIFICATION. IT IS IMPORTANT THAT THIS INTERPRETATION BE REVIEWED DIMENSIONALLY AND FUNCTIONALLY WITH RESPECT TO ACTUAL ARCHITECT'S INTENT, INTERFACING CONDITIONS, MATERIAL AND JOB SITE CONDITIONS.
  - ALL DIMENSIONS SHALL BE FIELD VERIFIED AND/OR APPROVED BY THE GENERAL CONTRACTOR PRIOR TO GLASS ORDERING AND FABRICATION. MP DRAFTING & DESIGN AND THE CUSTOMER WILL ASSUME NO RESPONSIBILITY FOR DIMENSIONAL ERRORS OR CHANGES RESULTING FROM FIELD CORRECTIONS.
  - PROJECT MATERIALS MUST BE PROTECTED IMMEDIATELY FROM STAINING BY WET CARDBOARD PAPER AND FROM THE ACTION OF HARSH ALKALIS AND SAND IN CONCRETE, STUCCO, MORTAR OR PLASTER. THE SETTING OF THE PROJECT MATERIALS REQUIRES THE GENERAL CONTRACTOR TO CLOSELY SUPERVISE OTHER TRADES SO AS TO PREVENT MARRING OR DISCOLORATION FROM ANY CAUSE.
  - ALL SEALANT JOINTS SHOULD BE SEALED WATERTIGHT FOLLOWING THE SEALANT MANUFACTURER'S RECOMMENDATIONS AS TO SIZE, METHOD OF APPLICATION AND COMPATIBILITY WITH ADJOINING MATERIALS.
  - ALL FRAMING SYSTEMS SHALL BE FABRICATED & INSTALLED PER THE MANUFACTURER'S INSTRUCTIONS.
  - THE ROUGH OPENINGS PROVIDED MUST BE SQUARE AND WITHIN SPECIFIED BUILDING TOLERANCES.
  - PERIMETER SUBSTRATE MUST BE CAPABLE OF WITHSTANDING REACTION FORCES IMPOSED BY DESIGN LOADS.
  - ALL FASTENING INFORMATION TO BE VERIFIED ON SITE BY CUSTOMER FOR VARIATION FROM SHOP DRAWINGS. ALL FASTENERS SHOWN FOR REFERENCE ONLY UNLESS SPECIFICALLY CALLED OUT BY PROFESSIONAL ENGINEER.
  - LAWS AND BUILDING AND SAFETY CODES GOVERNING THE DESIGN AND USE OF GLAZING ENTRANCE, WINDOW AND CURTAIN WALL PRODUCTS VARY WIDELY. MP DRAFTING & DESIGN AND THE CUSTOMER DOES NOT CONTROL THESE SELECTION OF PRODUCT CONFIGURATIONS, OPERATING HARDWARE OR GLAZING MATERIALS AND ASSUMES NO RESPONSIBILITY.
  - SEE CUSTOMER'S QUOTATION FOR ANY EXCLUDED ITEMS NOT NOTED WITHIN.
- PROPRIETARY NOTICE:**  
THIS DRAWING SHEET AND CONTENTS HEREIN ARE PROPERTY OF MP DRAFTING & DESIGN AND ITS CUSTOMERS. USE OF THESE DRAWINGS, ITS CONTENT AND DESIGN CONCEPTS ARE INTENDED FOR THE USE OF THE INTENDED RECIPIENT. MP DRAFTING & DESIGN AND ITS CUSTOMERS ARE NOT RESPONSIBLE FOR USE BY OTHER PARTIES.

### NOTE SYMBOL KEY

	ARCHITECT NOTE		ENGINEERING NOTE ENGINEER OF RECORD OR DELEGATED DESIGN
	GLAZING CONTRACTOR OR PROJECT MANAGER NOTE		FABRICATOR OR INSTALLER NOTE

NOTE:  
ALL DIMENSIONS TO BE FIELD  
VERIFIED PRIOR TO FABRICATION

PREFERRED  
GLASS INC.

6215 KING RD.  
MARINE CITY, MICHIGAN 48039  
P: 810.420.0753  
F: 810.420.0754

**MP** drafting  
& design

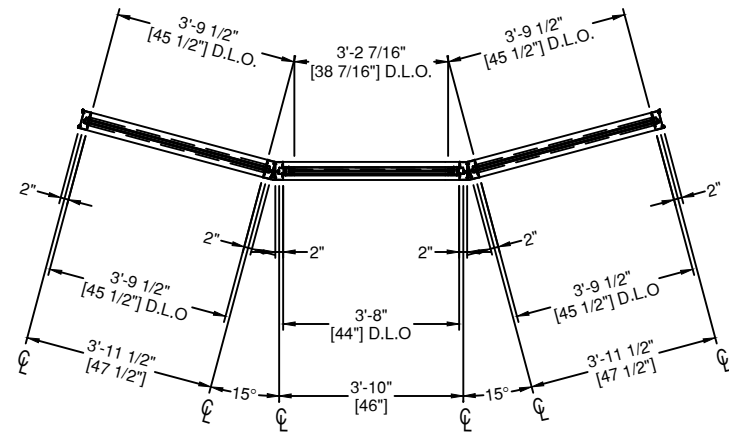
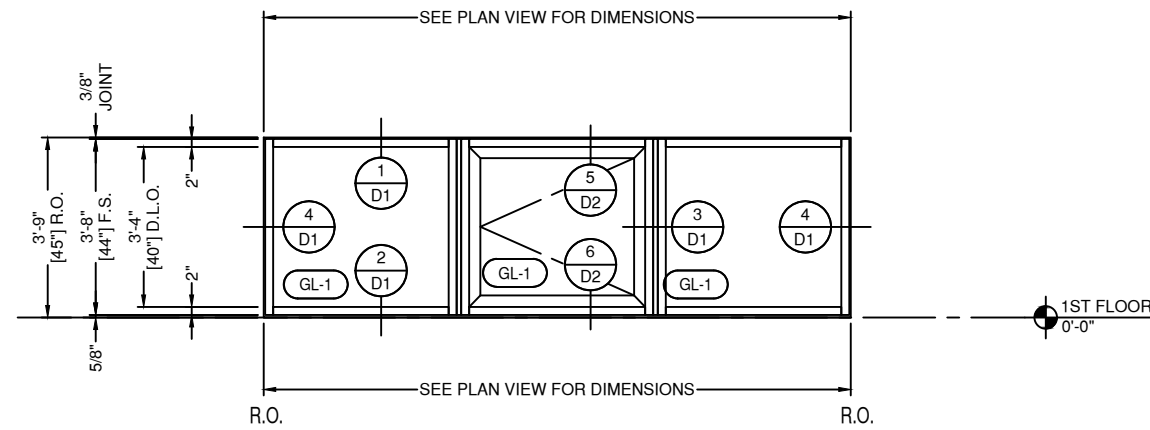
www.MPDRAFTING.com  
P: 248.522.7096  
F: 248.522.7030

ARCHITECT:

ARCHITECT NOTE:  
ALL NOTES REQUESTING VERIFICATION,  
CONFIRMATION, OR INFORMATION THAT ARE  
NOT ANSWERED ARE ASSUMED TO BE  
CORRECT AS SHOWN ON THESE DRAWINGS.

STAMPS/  
SUBMITTALS:

Note: Center Window Panel  
to be Awning Style, Hinged  
from the Top



1 ELEVATION 1  
E1

DRAWING SCALE  
24x36: 1/2" = 1'-0"  
11x17: 1/4" = 1'-0"

THUS REQD: 4  
OPP REQD: 0  
TOTAL REQD: 4

ARCH. REF.  
XXX

TUBELITE T1400 SERIES 2"X4-1/2" S.F.  
TUBELITE CW 37000 OPERABLE WINDOW  
FINISH: CLEAR ANODIZED

REVISION	DATE
0	01.04.23
-	-
-	-
-	-
-	-

PROJECT NUMBER:  
22-295

PROJECT NAME:  
ARETHA FRANKLIN  
ADMIN

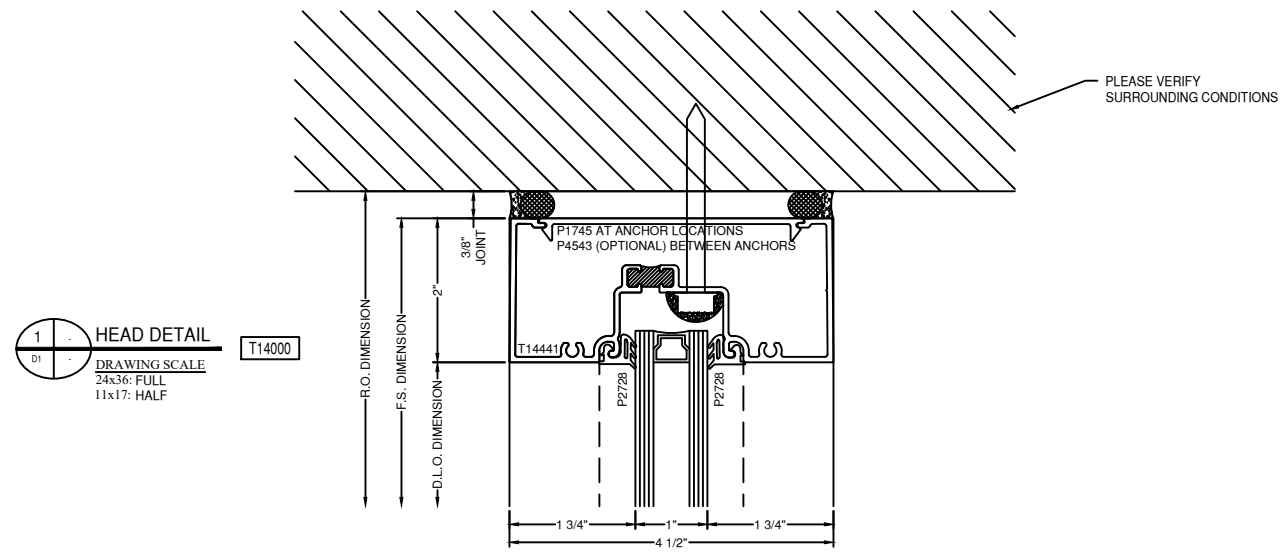
SHEET DESCRIPTION:  
ELEVATIONS

SHEET:  
E1

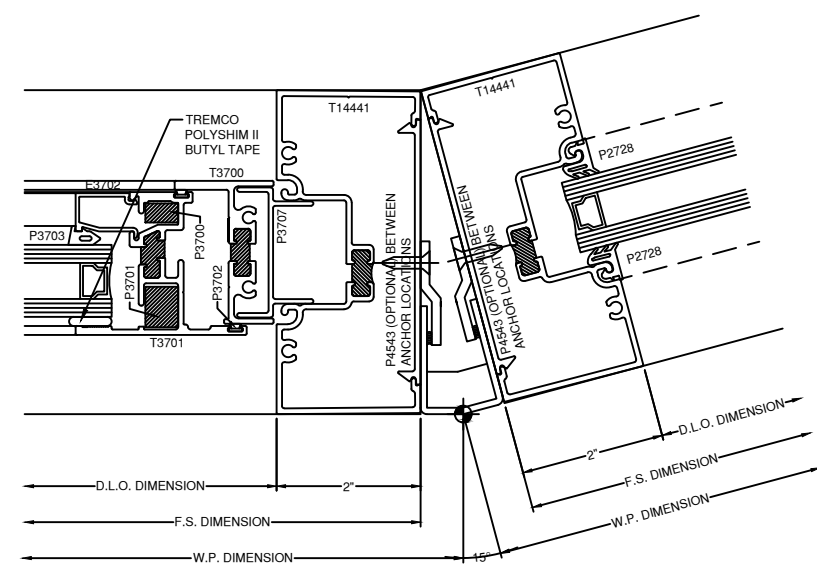


NOTE:  
FASTENERS SHOWN FOR LOCATION  
REFERENCE ONLY. FASTENER TYPE, SIZE  
AND SPACING ARE TO BE DETERMINED  
BY THE PROFESSIONAL ENGINEER.

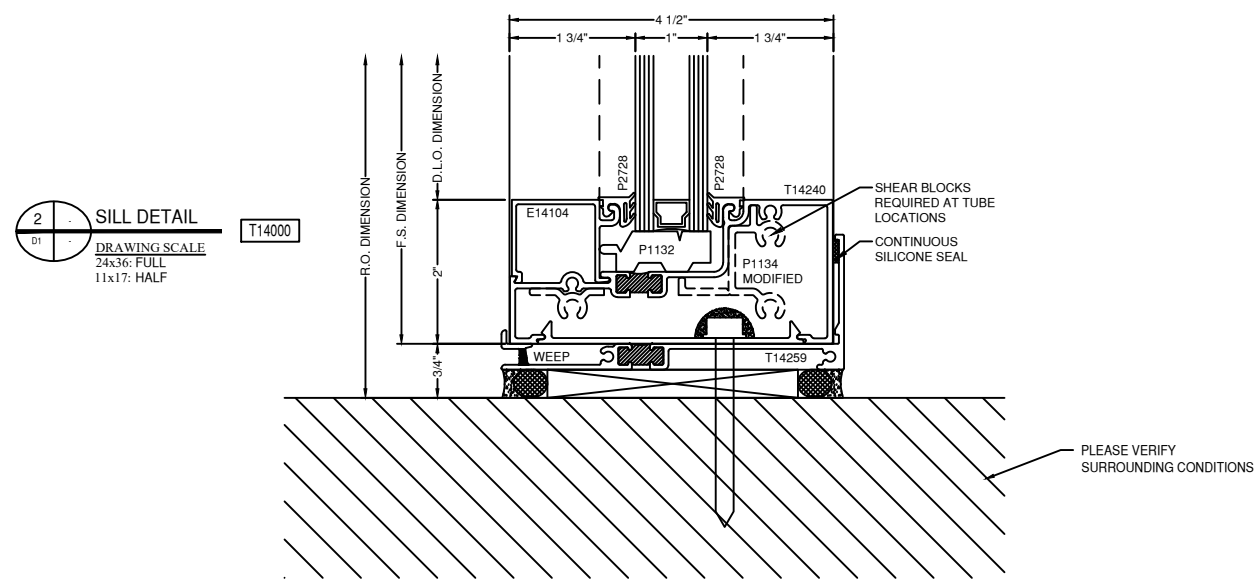
NOTE:  
ALL DIMENSIONS TO BE FIELD  
VERIFIED PRIOR TO FABRICATION



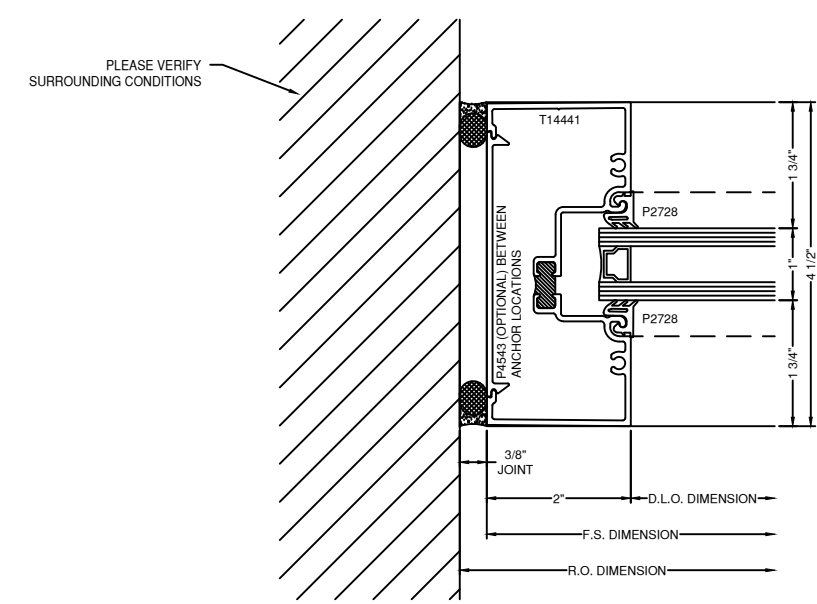
1 HEAD DETAIL  
DRAWING SCALE  
24x36: FULL  
11x17: HALF  
T14000



3 CORNER DETAIL  
DRAWING SCALE  
24x36: FULL  
11x17: HALF  
T14000  
CW3700



2 SILL DETAIL  
DRAWING SCALE  
24x36: FULL  
11x17: HALF  
T14000



4 JAMB DETAIL  
DRAWING SCALE  
24x36: FULL  
11x17: HALF  
T14000

PREFERRED  
GLASS INC.

6215 KING RD.  
MARINE CITY, MICHIGAN 48039  
P: 810.420.0753  
F: 810.420.0754

MP drafting  
& design  
www.MPDRAFTING.com  
P: 248.522.7096  
F: 248.522.7030

ARCHITECT:

ARCHITECT NOTE:  
ALL NOTES REQUESTING VERIFICATION,  
CONFIRMATION, OR INFORMATION THAT ARE  
NOT ANSWERED ARE ASSUMED TO BE  
CORRECT AS SHOWN ON THESE DRAWINGS.

STAMPS/  
SUBMITTALS:

REVISION	DATE
0	01.04.23
-	-
-	-
-	-
-	-

PROJECT NUMBER:  
22-295

PROJECT NAME:  
ARETHA FRANKLIN  
ADMIN

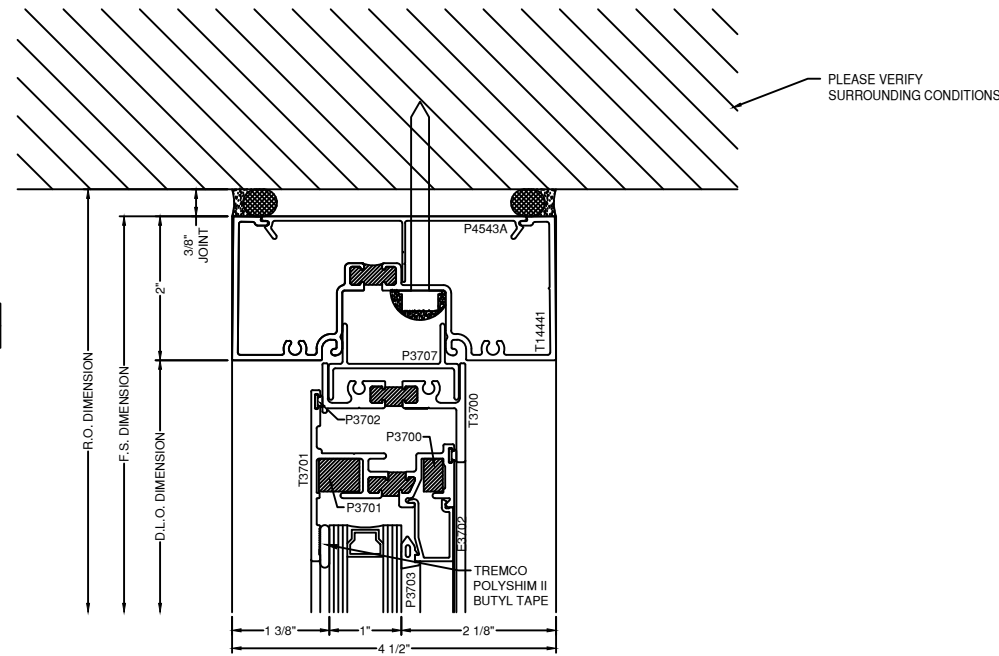
SHEET DESCRIPTION:  
DETAILS

SHEET:  
D1

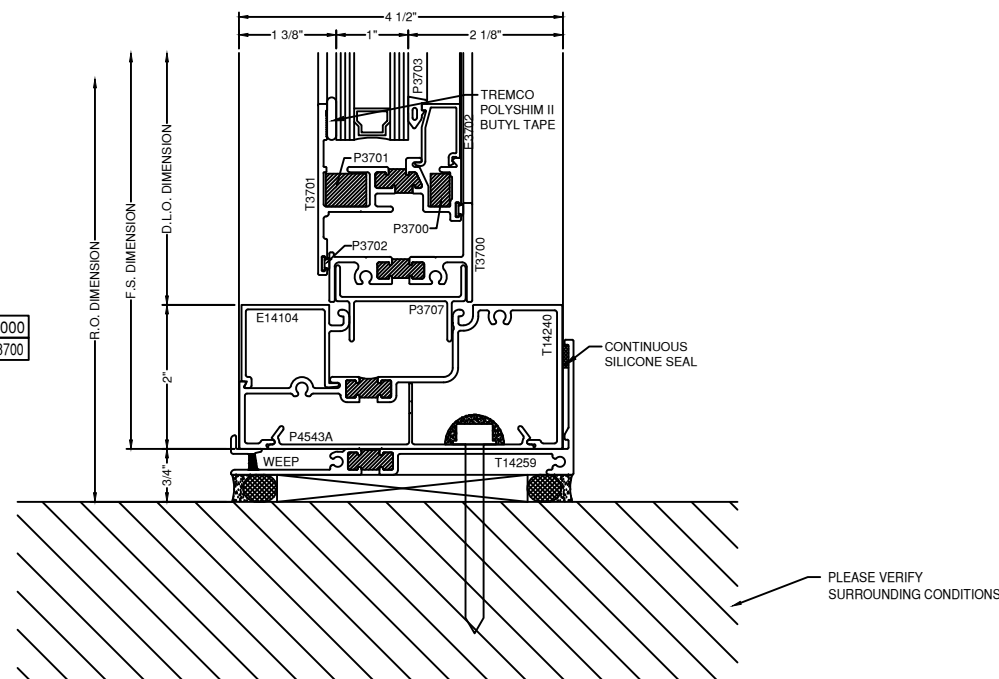
NOTE:  
FASTENERS SHOWN FOR LOCATION  
REFERENCE ONLY. FASTENER TYPE, SIZE  
AND SPACING ARE TO BE DETERMINED  
BY THE PROFESSIONAL ENGINEER.

NOTE:  
ALL DIMENSIONS TO BE FIELD  
VERIFIED PRIOR TO FABRICATION

5 HEAD DETAIL  
DRAWING SCALE  
24x36: FULL  
11x17: HALF  
T14000  
CW3700



6 SILL DETAIL  
DRAWING SCALE  
24x36: FULL  
11x17: HALF  
T14000  
CW3700



PREFERRED  
GLASS INC.

6215 KING RD.  
MARINE CITY, MICHIGAN 48039  
P: 810.420.0753  
F: 810.420.0754

MP drafting  
& design

www.MPDRAFTING.com  
P: 248.522.7096  
F: 248.522.7030

ARCHITECT:

ARCHITECT NOTE:  
ALL NOTES REQUESTING VERIFICATION,  
CONFIRMATION, OR INFORMATION THAT ARE  
NOT ANSWERED ARE ASSUMED TO BE  
CORRECT AS SHOWN ON THESE DRAWINGS.

STAMPS/  
SUBMITTALS:

REVISION	DATE
0	01.04.23
-	-
-	-
-	-
-	-

PROJECT NUMBER:  
22-295

PROJECT NAME:  
ARETHA FRANKLIN  
ADMIN

SHEET DESCRIPTION:  
DETAILS

SHEET:  
D2



# 4500/4600 Series Windows

Commercial Aluminum Hopper, Awning, Casement & Fixed



Quality Windows & Doors for All Seasons

All models AAMA rated AW  
Specifically designed for commercial  
and architectural applications



Innova Apartments - Cleveland, OH  
4500 Fixed and 4600 Projected Windows

## Product Performance Details (AAMA/WDMA/CSA 101/I.S.2/A440-◆)

Type	Product Designation ◆▼	Structural/Water/ Air Test Size (W x H)	Air Infiltration (cfm/sq ft)	Water Resistance (psf)	Deflection (psf)	Structural ^ (psf)
4500 Fixed <i>Blast Also Available!</i>	AW40	60"W x 99"H	< 0.01 @ 6.27 psf	8.15	40	60
	<i>optional:</i> AW100			12.11	100	150
4500 Project-In Hopper	AW40	60"W x 36"H	0.08 @ 6.27 psf	8.15	40	60
	<i>optional:</i> AW70			12.11	70	105
	<i>optional:</i> AW90			12.11	90	135
4600 Project-Out Casement <i>Blast Also Available!</i>	AW40	36"W x 60"H	0.05 @ 6.27 psf	8.15	40	60
	<i>optional:</i> AW70			12.11	70	105
4600 Project-Out Awning <i>Blast Also Available!</i>	AW40	60"W x 36"H	0.03 @ 6.27 psf	8.15	40	60
	<i>optional:</i> AW65			12.11	65	97.5
4600 Project-Out Awning with Roto Operator § <i>ADA Compliant Option Available</i>	AW40	60"W x 36"H	0.01 @ 6.27 psf	8.15	40	60

◆ The '05 fenestration standard utilized five performance classes - R, LC, C, HC and AW. NAFS-08 and -11 utilize four such classes - R, LC, CW and AW.

▼ Many window ratings can be increased by downsizing the window and determining maximum performance either through testing or calculation. Contact your local Wojan sales representative for details.

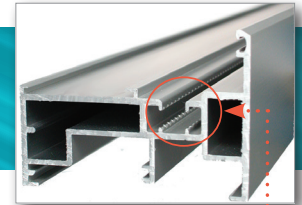
^ This is an intentional overload aspect to window performance testing and should not be used in lieu of the window DP (Design Pressure) when evaluating a product for a specific project or use.

§ ADA Compliant option per AAMA 513-12 with an average operating force of less than 5 lbf for lock handles and operator. All testing based on AAMA 513-12 without air, water and structural allowances or reductions; but including sampling, test equipment and methodology qualifications.

## 4500/4600 Series Features

- High Quality 1" Sealed Insulated Glass: Numerous options available including Low-E, tinted, obscure, tempered, laminated, argon-filled and spandrel
- Integral Mulling/Stacking System: Provides an unlimited selection of multi-window configurations within a single master frame, such as a combination of fixed and projected units
- Accessories available such as interior snap trim, pre-set panning, mullions, expanders, strap anchors, face flange adaptors, head/ jamb receptors and subsills
- Interior glazed design for ease of glass replacement

*Our products feature pour and debridge polyurethane thermal breaks for better performance, with a 10-year pass-through warranty against failure of the polymer.*

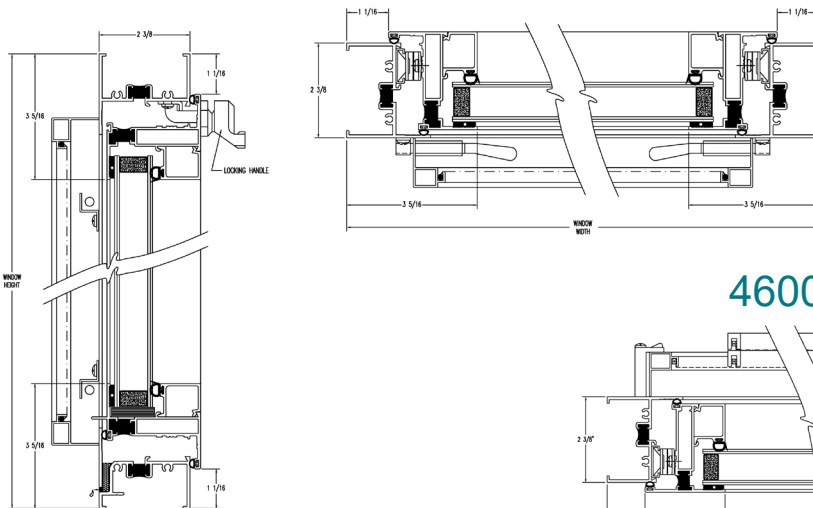


Abrasion "hooks" displace metal along the lugs to improve adhesion in the thermal barrier pocket.

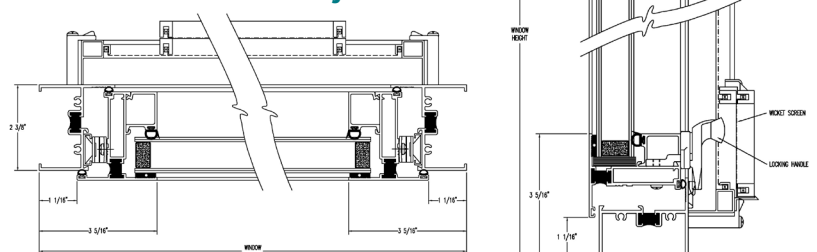
- 2 $\frac{3}{8}$ " Frame Depth
- Electrostatically-applied baked-on polyester standard colors meet or exceed AAMA 2603 performance standards: Bronze, White
- Available high-performance fluoropolymer colors meet or exceed AAMA 2605 standards: White (70% Kynar®), Bronze (70% Kynar®) (*Kynar® is a registered trademark of Arkema, Inc.*)
- Available anodic coatings meet or exceed AAMA 611 performance standards: Clear or Bronze Anodized
- Non-standard colors available subject to minimum quantity requirements
- Optional stainless steel hardware packages are also available
- Blast-Resistant fixed and project-out models also available, call for details

Visit [www.wojan.com](http://www.wojan.com) for the most current product details, CAD drawings and project photos

### 4500 Project-In



### 4600 Project-Out



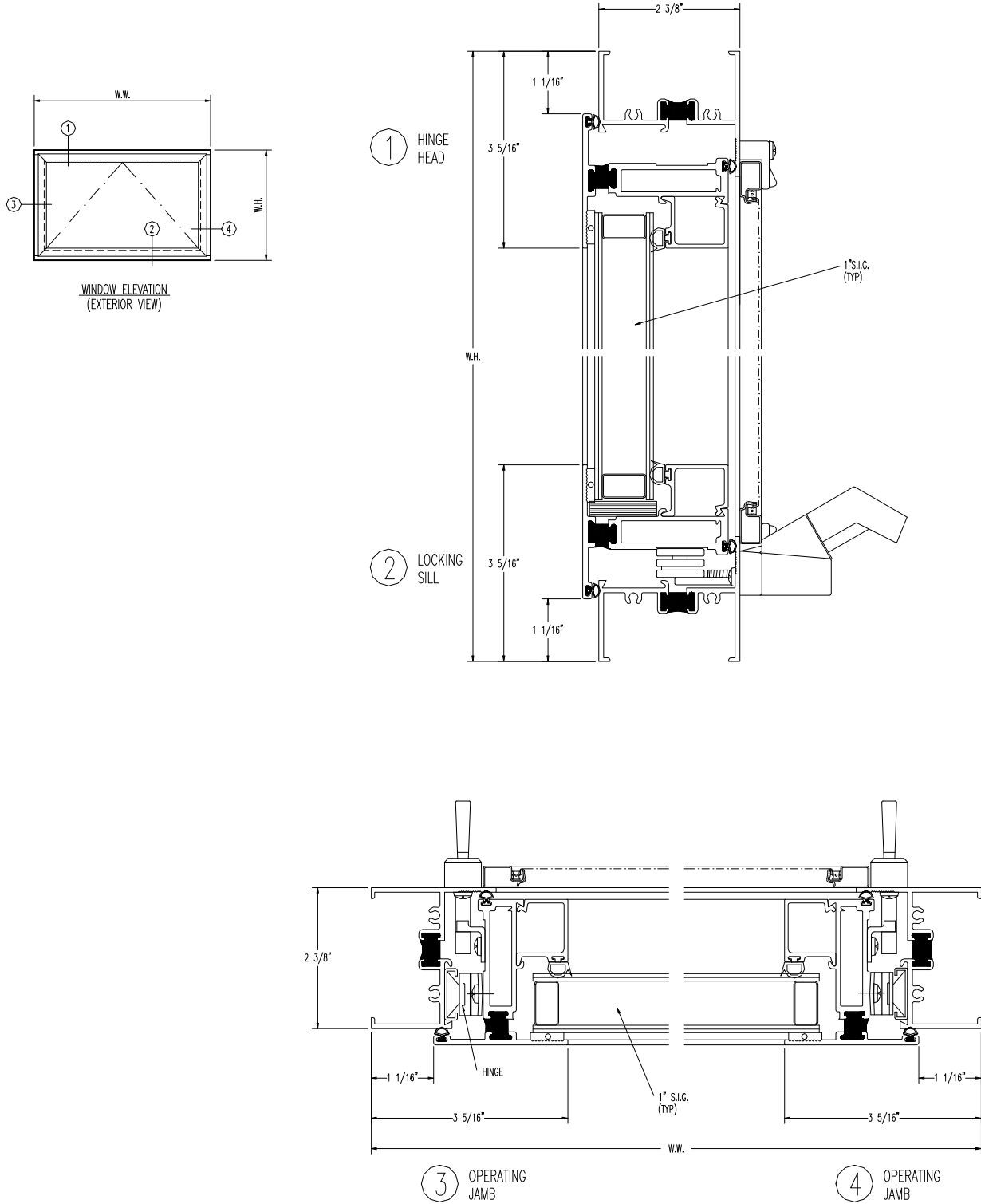
HQ/Sales/Manufacturing  
217 Stover Road  
Charlevoix, MI 49720  
fax (231) 547-4237

[www.wojan.com](http://www.wojan.com)  
(800) 632-9827

Manufacturing  
340 Jay Street  
Coldwater, MI 49038  
fax (517) 279-9832



# 4600 PROJECT-OUT AWNING ROTO



# TUBELITE®

**DEPENDABLE**

LEADERS IN ECO-EFFICIENT STOREFRONT,  
CURTAINWALL AND ENTRANCE SYSTEMS



More recycled content, eco-efficient finishes

## Anodized Finishes



Clear Class 2 **C2**  
Clear Class 1 **C1**



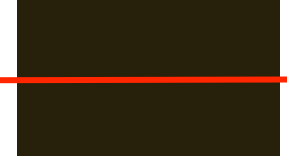
Champagne **CH**



Light Bronze **LB**



Medium Bronze **MB**



Dark Bronze **DB**



Extra Dark Bronze **EB**



Black **BL**

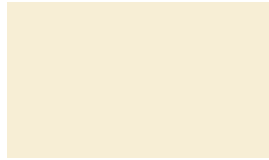


Copper **CA**

## Standard Painted Colors – 70% PVDF



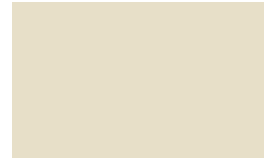
Bone White **1P**  
LT609-70



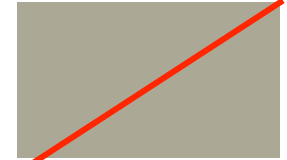
Colonial White **NP**  
LT640-70



Sandstone **5P**  
LT607-70



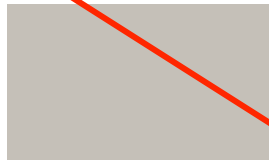
Burnt Sun **7P**  
LT612-70



Antique Bronze **ZP**  
LT641-70



Beige **BP**  
LT603-70



Light Seawolf Beige **CP**  
LT614-70



Dove Gray **VP**  
LT615-70



Slate Gray **WP**  
LT604-70



Charcoal Gray **XP**  
LT605-70



Patina Green **SP**  
LT616-70



Dark Ivy **TP**  
LT617-70



Hartford Green **2P**  
LT606-70



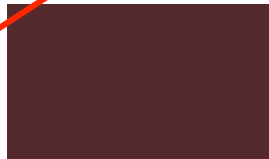
Military Blue **DP**  
LT610-70



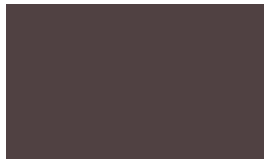
Interstate Blue **UP**  
LT623-70



Colonial Red **RP**  
LT622-70



Boysenberry **9P**  
LT608-70



Sage Brown **8P**  
LT620-70



Quaker Bronze **6P**  
LT602-70

**NOTE** Colors shown are not exact and are intended for planning purposes.

For actual job, Tubelite® will supply Linetec color chips.



# TUBELITE®

**DEPENDABLE**

LEADERS IN ECO-EFFICIENT STOREFRONT,  
CURTAINWALL AND ENTRANCE SYSTEMS



More recycled content, eco-efficient finishes

## Finish Color Guide Chart

Depend on Tubelite® for detailed information on the performance, integrity, and weatherability of anodized finishes, and for specifications on the color retention, erosion resistance, and gloss retention of painted finishes.

	AAMA Code	Code Performance	Content	Applicable Warranty	Tubelite® Colors Available
<b>ANODIZED</b>	<b>611</b>	Anodized aluminum provides and maintains a superior level of performance in terms of film integrity, exterior weatherability, and general appearance for many years.	Two-step electrolytic anodizing process	Standard Linetec 5yr. warranty applies on Class I anodize ✓  Standard Tubelite 2yr. warranty applies on Class II anodize	<b>Standard Finishes:</b> Clear - Class II ..... C2 Dark Bronze - Class I ..... DB  <b>Special Finishes:</b> Clear - Class I ..... C1 Champagne - Class I ..... CH Light Bronze - Class I ..... LB Medium Bronze - Class I ..... MB Extra Dark Bronze - Class I ..... EB Black - Class I ..... BL Copper - Class I ..... CA
<b>PAINTED</b>	<b>2605</b>	Co 10 yrs – Fade = 5 Delta E Ch 10 yrs – Chalk = 8 Gl 10 yrs – 50% retention Er 10 yrs – 10% loss SS 4,000 hrs Hu 4,000 hrs	70% PVDF	10-Yr Linetec Warranty ✓	<b>Standard Finishes:</b> Bone White ..... 1P Charcoal Gray .....XP Colonial White .....NP Patina Green .....SP Sandstone .....5P Dark Ivy .....TP Burnt Sun .....7P Hartford Green .....2P Antique Bronze .....ZP Military Blue .....DP Beige .....BP Interstate Blue .....UP Light Sea Wolf Beige ....CP Colonial Red .....RP Boysenberry .....9P Sage Brown .....8P Dove Gray .....VP Quaker Bronze .....6P Slate Gray .....WP  <b>Custom Finishes:</b> Nearly unlimited in-house blendable shades
	<b>2604</b>	Co 5 yrs – Fade = 5 Delta E Ch 5 yrs – Chalk = 8 Gl 5 yrs – 30% retention Er 5 yrs – 10% loss SS 3,000 hrs Hu 3,000 hrs	50% PVDF	5-Yr Linetec Warranty ✓	<b>Custom Finishes:</b> Nearly unlimited in-house blendable shades
	<b>2603</b>	Co 1 yr – “slight” fade Ch 1 yr – “slight” chalk Gl no specification Er no specification SS 1,500 hrs Hu 1,500 hrs	Baked Enamel	5-Yr Linetec Warranty (Adhesion only)	<b>Custom Finishes:</b> Nearly unlimited in-house blendable shades

**KEY** Co = Color Retention      SS = Salt Spray  
Ch = Chalk Resistance      Hu = Humidity  
Gl = Gloss Retention      = Tubelite Standard Color Palette  
Er = Erosion Resistance

**NOTE** Class I = Minimum 0.7 mil thickness  
Class II = Minimum 0.4 mil thickness  
✓ = Extended Warranty Available  
(Contact Tubelite Inc.)

### ECOLUMINUM™

Beyond being compliant, Tubelite's sister company Linetec captures and destroys the Volatile Organic Compounds (VOCs) present in solvent-borne paints during the finishing process. 100% of the solvents are captured from the painting operations, and destroyed with a \$2 million “oxidizer”, which burns the VOC's at 1500 degree heat, converting them to harmless water vapor. In doing so, our liquid-paints are just as VOC-free to the environment as powder or waterborne paints.

At Linetec's anodize operations, the process does not use heavy metals or toxins and is environmentally friendly. Anodized aluminum is 100% recyclable and uses simple water-based chemistry that can be treated easily and releases no harmful by-products. Linetec's voluntary commitment to a clean and healthy environment goes well beyond industry standards or regulatory requirements.

City of Detroit GSD

# AFT Admin Kitchen Ventilation

## Detroit

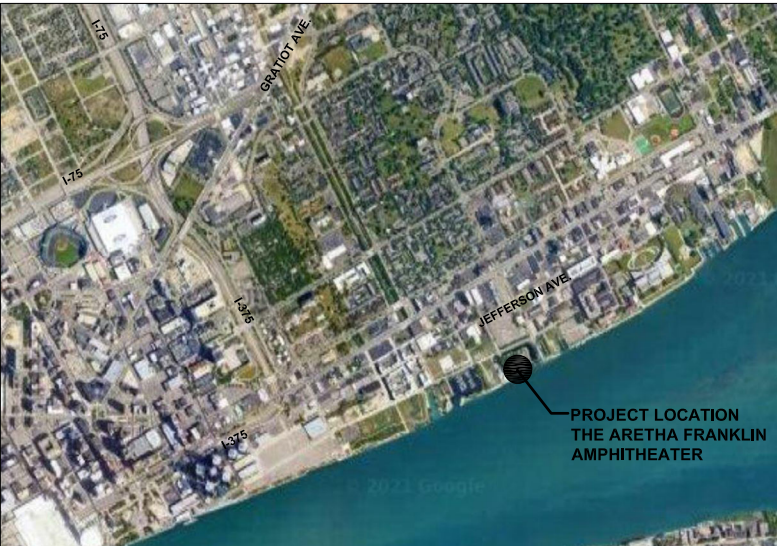
### PERMITS / CONSTRUCTION - 12/21/2022

HAMILTON ANDERSON PROJECT NUMBER: 202022.01 CCM02

**HamiltonAnderson**  
architecture landscape architecture urban design

Hamilton Anderson Associates, Inc  
1435 Randolph Suite 200  
Detroit, Michigan 48226  
p 313 964 0270 f 313 964 0170  
www.hamilton-anderson.com

LOCATION MAP:



SITE MAP:



PROJECT CONTACTS:

**OWNER:**  
City of Detroit  
General Services Department  
115 Erksine St.  
Detroit, MI 48201  
(313) 628-0900  
www.detroitmi.gov

**ARCHITECT/LANDSCAPE ARCHITECT:**  
Hamilton Anderson Associates, Inc.  
1435 Randolph  
Suite 200  
Detroit, MI 48226  
(313) 964-0270  
www.hamilton-anderson.com

**ELECTRICAL/MECHANICAL ENGINEER:**  
Strategic Energy Solutions, Inc.  
4000 West Eleven Mile Rd.  
Berkley, MI 48072  
(248) 399-1900  
www.sesnet.com/

SHEET INDEX:

C0 COVER SHEET  
M1 HVAC PLAN AND KITCHEN VENTILATION  
M2 MECHANICAL SCHEDULES AND DETAILS  
E1 ELECTRICAL PLAN

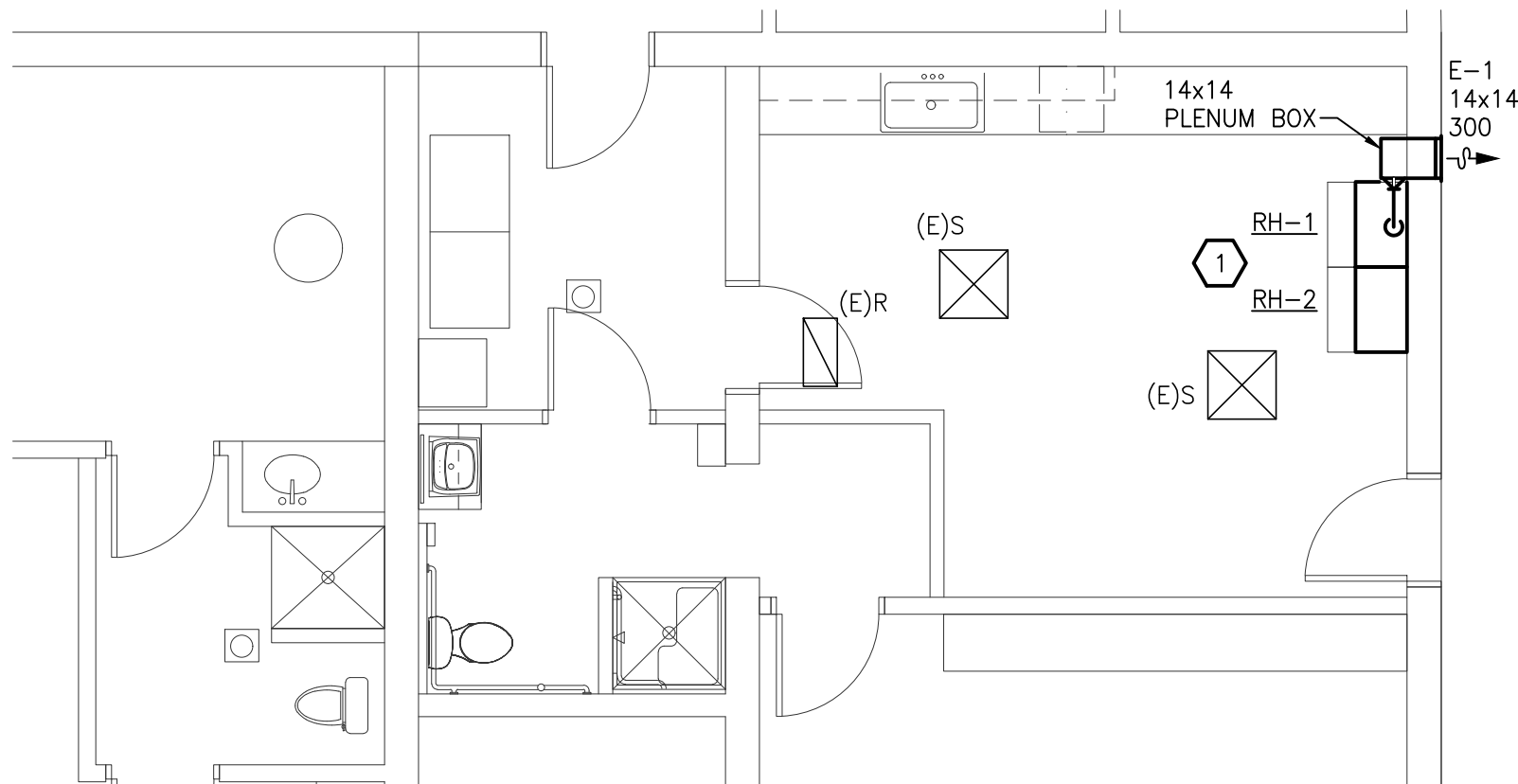


Drawn: S:\21\_0025\_06\_AFA\_Guest\_Services\Phase 2 EH\CAD\Mech\21002506\_P12\_MECHANICAL\_SHEETS.dwg  
 Plotted: Wed, 21 Dec 2022 4:41pm by Ru



# HVAC PLAN AND GENERAL INFORMATION

SCALE: 3/16" = 1'-0"



SHEET INDEX	
SHT NO	DESCRIPTION
M1	HVAC PLAN AND GENERAL INFORMATION
M2	MECHANICAL SCHEDULES

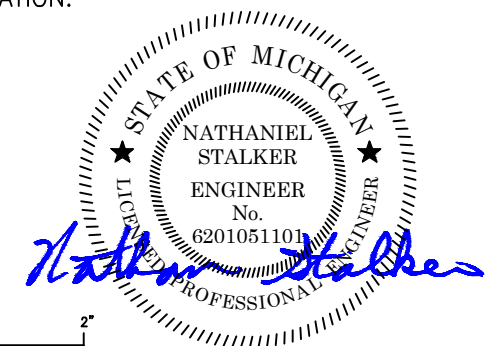
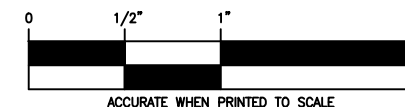
## HVAC GENERAL NOTES

1. THESE DRAWINGS ARE DIAGRAMMATIC AND INDICATE THE GENERAL EXTENT OF THE WORK. PROVIDE HVAC SYSTEMS COMPLETE PER SMACNA STANDARDS, AND PER APPLICABLE CODES INCLUDING ALL NECESSARY OFFSETS, FITTINGS, SPECIAL RADIUS OR MITERED ELBOWS WHICH ARE REQUIRED DUE TO SPACE CONSTRAINTS OR STRUCTURAL CONDITIONS OR OTHER CONDITIONS.
2. CONTRACTOR SHALL COORDINATE THEIR WORK WITH THE WORK OF ALL OTHER TRADES. ALL DUCTWORK IS TO BE ROUTED AS HIGH AS POSSIBLE. PROVIDE ACCESS AROUND ALL NEW EQUIPMENT PER MANUFACTURER'S RECOMMENDATIONS. VERIFY ALL CLEARANCES PRIOR TO THE FABRICATION OF ANY WORK.
3. DUCTWORK SHALL NOT BE INSTALLED IN A LOCATION THAT RESTRICTS THE ACCESS TO MECHANICAL DEVICES REQUIRING ACCESS.
4. THE CONTRACTOR SHALL PROVIDE ALL MISCELLANEOUS SUPPORTING STEEL, ETC. FOR THE PROPER INSTALLATION OF ALL MECHANICAL SYSTEMS.
5. COORDINATE WALL PENETRATIONS, LOUVER SIZES, LOCATIONS ETC. WITH ARCHITECTURAL TRADES. SEAL ALL DUCT PENETRATIONS.
6. THE CEILING SPACE IS USED AS A RETURN AIR PLENUM. NO PLASTIC MATERIALS INCLUDING PVC PIPING, CONDUIT, WIRING, ETC. SHALL BE USED. ALL MATERIAL IN THE CEILING SPACE IS TO BE PLENUM RATED.
7. CONNECTION TO EQUIPMENT SHALL BE VERIFIED WITH MANUFACTURER'S CERTIFIED DRAWINGS. TRANSITIONS TO ALL EQUIPMENT SHALL BE VERIFIED AND PROVIDED FOR EQUIPMENT FURNISHED.



## KEYED NOTES

1. CONVERTIBLE DOMESTIC RANGE HOODS (BROAN F40000 OR EQUAL) FURNISHED BY ARCH, INSTALLED BY MECH CONTRACTOR. CENTER HOODS OVER EXISTING RANGES. VERIFY EXACT LOCATION IN FIELD PRIOR TO INSTALL. RH-1 TO BE DUCTED TO THE OUTSIDE WITH A 8"Ø EA DUCT. PROVIDE TRIM FOR DUCT PENETRATION AT EXISTING LAY-IN CEILING (@ +/- 9'-0" A.F.F.). RH-2 TO TO BE INSTALL AS RE-CIRCULATING HOOD. REFER TO PRODUCT INSTALLATION MANUAL FOR FURTHER INFORMATION.



12/21/2022



HAMILTON ANDERSON, INC  
 1435 Randolph Suite 200  
 Detroit, Michigan 48226

ISSUED	DATE

ISSUED	DATE
BUILDING PERMIT	12/21/2022

CHECKED	JMC
DRAWN	PAC

PROJECT: AFT ADMIN BUILDING  
 KITCHEN VENTILATION  
 SES PROJECT # 2021 0025 06

SHEET TITLE  
 HVAC PLAN AND  
 GENERAL  
 INFORMATION

SHEET NUMBER  
**M1**

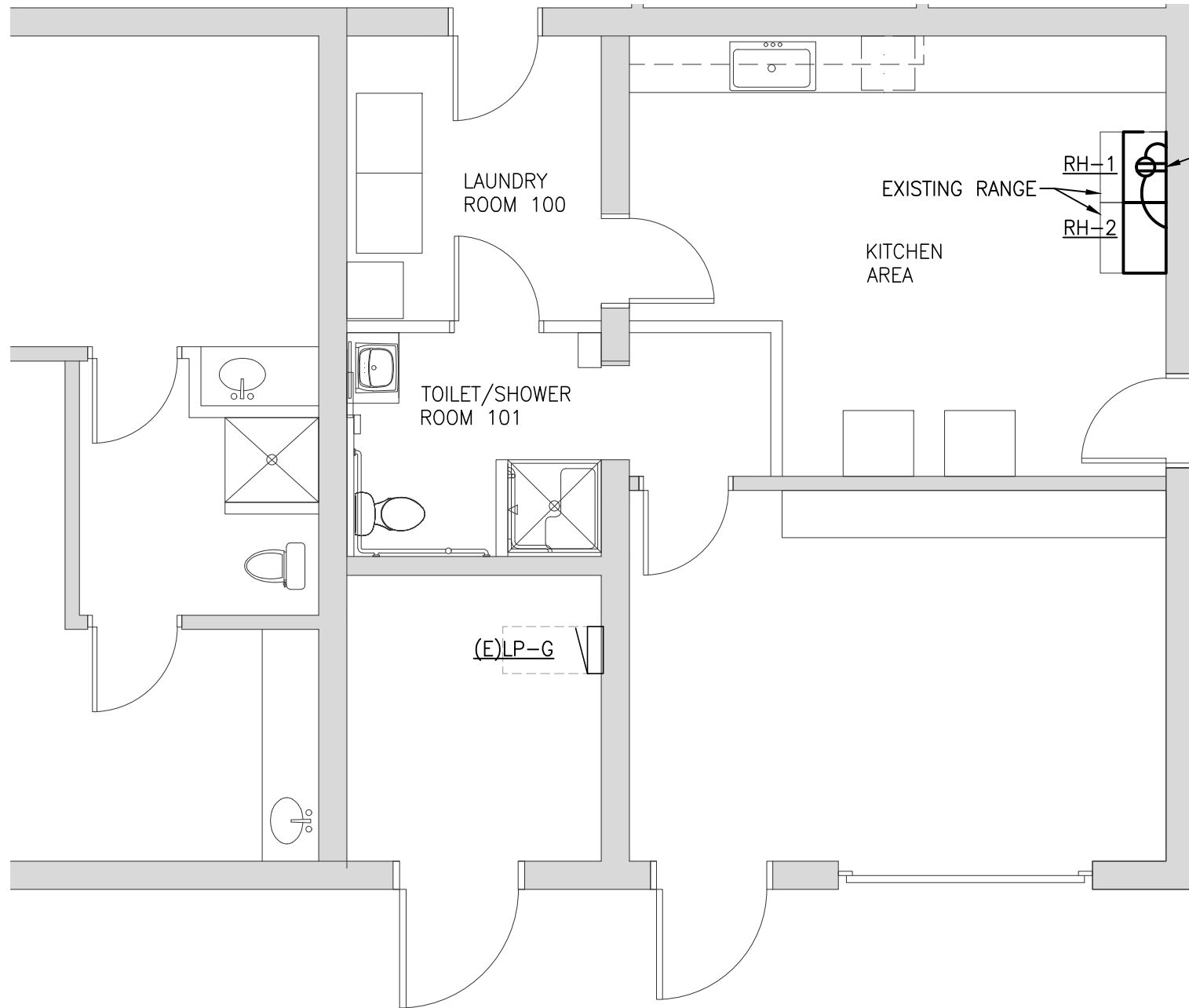


Drawn: S:\21 0025 06 AFA Guest Services\Phase 2 E\CAD\Elec\21002506\_PH2\_ELECTRICAL SHEETS.dwg  
 Plotted: Wed, 21 Dec 2022 - 4:41pm by fu



# ELECTRICAL PLAN

SCALE: 3/16" = 1'-0"



PROVIDE A DUPLEX RECEPTACLE FOR  
 RH-1 AND RH-2. LOCATE RECEPTACLE  
 PER MANUFACTURER INSTRUCTIONS.  
 PROVIDE NEW 120V, 1PH, 20A BREAKER  
 IN PANEL LP-G, BREAKER 31 FED WITH  
 2#12, 1#12G IN 3/4" C.

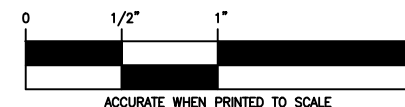
	CONNECTED	DEMAND	TOTAL
RH-1: MOTOR	300W	* 1.25%	= 375W
LAMP	75W	* 1.25%	= 93W
RH-2: MOTOR	300W	* 1.00%	= 300W
LAMP	75W	* 1.25%	= 93W
<b>TOTAL</b>			<b>= 861W</b>

APPROXIMATE ELECTRICAL LOAD ADDED:  
861W @120V.

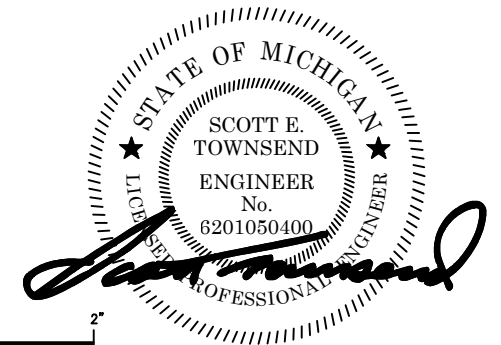
DRAWING INDEX	
SHT NO	DESCRIPTION
E1	ELECTRICAL PLAN

## POWER GENERAL NOTES

1. ALL CONDUITS SERVING 120 VOLTS OR GREATER SHALL INCLUDE A GROUND WIRE.
2. ALL 120 VOLT CIRCUITS SHALL UTILIZE A SEPARATE NEUTRAL.
3. ROUTE ALL CONDUITS CONCEALED UNLESS APPROVED BY OWNER.



ACCURATE WHEN PRINTED TO SCALE



12/21/2022



**HAMILTON ANDERSON, INC**  
 1435 Randolph Suite 200  
 Detroit, Michigan 48226

ISSUED	DATE

ISSUED	DATE
BUILDING PERMIT	12/21/2022

CHECKED	DATE
FKU JMC	

PROJECT: AFT ADMIN BUILDING  
 KITCHEN VENTILATION  
 SES PROJECT # 2021 0025 06

SHEET TITLE  
**ELECTRICAL PLAN**

SHEET NUMBER  
**E1**