

BRUSH PARK APARTMENTS

269 Winder Street, Detroit



View from Winder and Brush

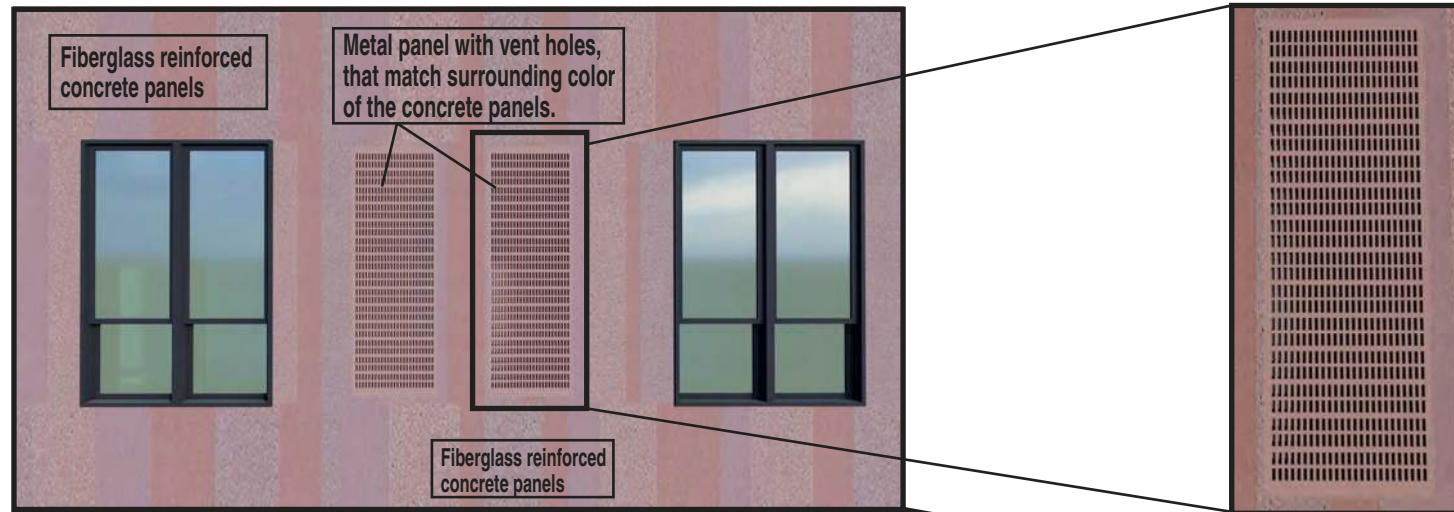


Major Changes

The original concrete vent panels were not functional due to not allowing 70% fresh air that is required by the PTAC unit manufacturer without cracking. The color of metal panels will match the adjacent concrete panels. See rendering on previous page and below.

The owner adjusted their proposed unit count by removing units. This expanded the commercial space to the main corner of the building and moved the community space along Winder.

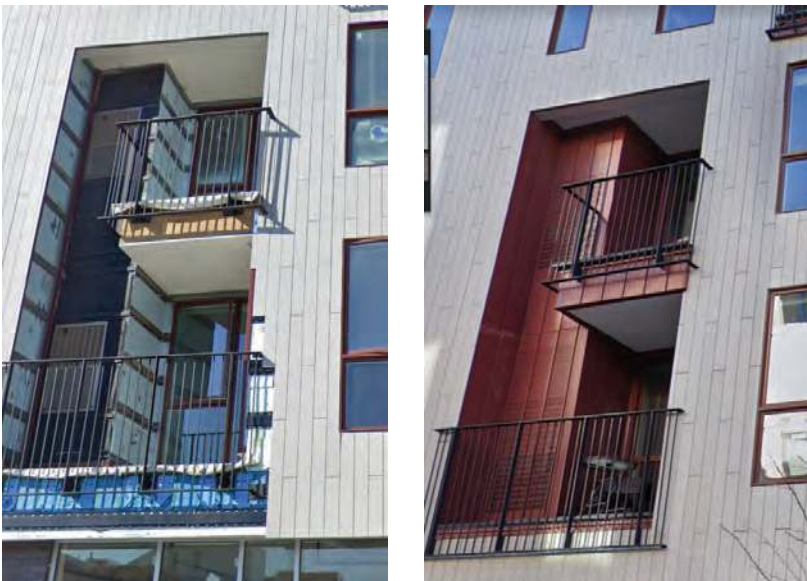
Additionally, the approved rendering in 2020 was never updated to show the approved tan panels instead of the white panel. Rendering were updated to show both.



Fiberglass Reinforced Concrete Panels

These Panels above were approved back in April 2020. There have been no changes to this aspect of the facade.

PTAC Metal Grills



The Flats at City Modern

Alfred & John R

Example on PTAC system with metal panels that we are using as a guideline.

