



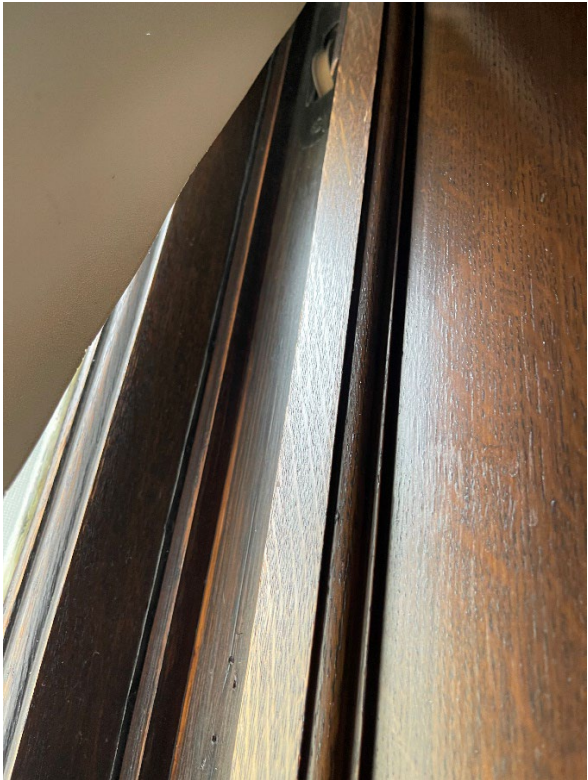
This window cannot be extended outward to open because the wood has rotted at the bottom.











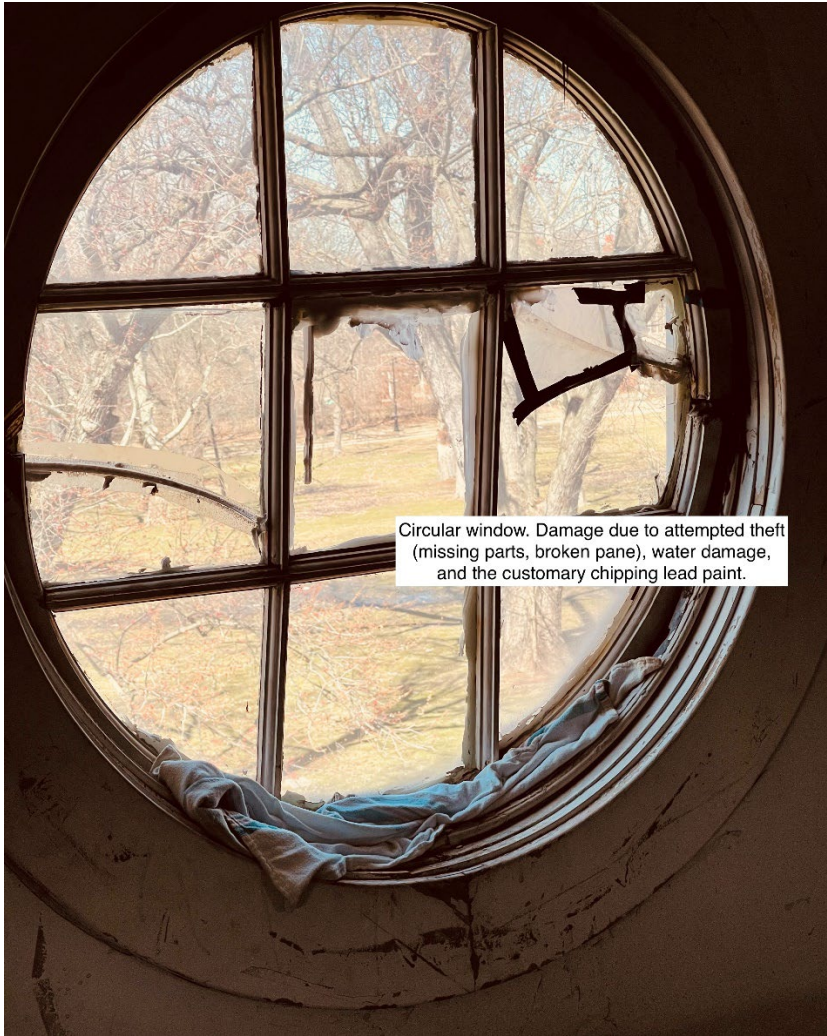


1/4 window stolen, replaced with a pane of glass. Note extensive lead damage

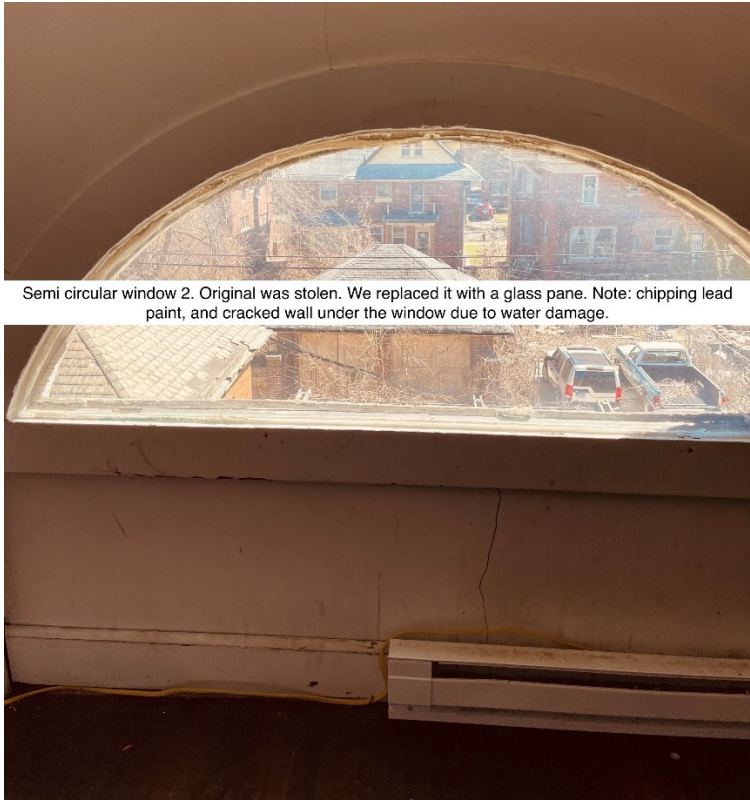








Circular window. Damage due to attempted theft (missing parts, broken pane), water damage, and the customary chipping lead paint.



Semi circular window 2. Original was stolen. We replaced it with a glass pane. Note: chipping lead paint, and cracked wall under the window due to water damage.



Window was stolen. Only screen remains. Extensive and exposed chipping lead paint.



Missing window. Buckled wood from water damage.











































