

- LOCATION MAP -
SCALE: NONE
NORTH

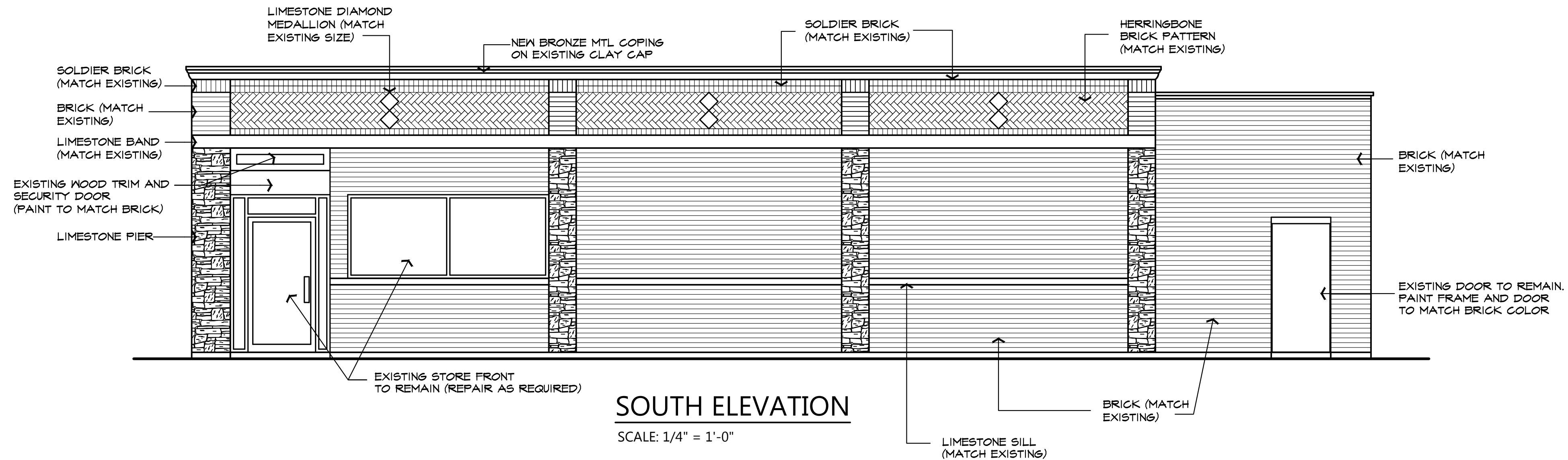
GENERAL PROJECT NOTES:

1. THE CONTRACT DOCUMENTS ARE PREPARED FOR THE CONTRACTOR TO BECOME FAMILIAR WITH THE SCOPE OF WORK AND PROPOSED DESIGN CONCEPT.
2. DO NOT SCALE THE CONTRACT DOCUMENTS. DIMENSIONS AS INDICATED SHALL GOVERN.
3. CONTRACTORS SHALL WARRANT THEIR RESPECTIVE CONSTRUCTION AND WORK TO BE PERFORMED IN ACCORDANCE WITH THE REQUIREMENTS IF ALL LOCAL, STATE, AND FEDERAL LAWS, AUTHORITIES HAVING JURISDICTION, AND MANUFACTURER'S INSTALLATION AND WARRANTY REQUIREMENTS.
4. CONTRACTORS SHALL PROVIDE ALL REQUIRED LABOR AND MATERIALS TO ACHIEVE INDUSTRY STANDARD OF MEANS AND METHODS TO ACHIEVE THE DESIGN INTENT OF THE CONTRACT DOCUMENTS REGARDLESS WHETHER OR NOT DOCUMENTED HEREIN. CONSIDERATIONS FOR ADDITIONAL LABOR OR MATERIAL COSTS ON THE BASIS OF OMISSIONS SHALL NOT BE GRANTED.
5. INTERPRETATIONS, CLARIFICATIONS, CHANGES, DELETIONS, AND RELATED MODIFICATIONS TO THE CONTRACT DOCUMENTS SHALL BE SOLELY BY THE ARCHITECT EITHER BY ISSUANCE OF A CONSTRUCTION CHANGE DIRECTIVE OR ARCHITECT'S SUPPLEMENTAL INSTRUCTIONS.
6. IT IS THE RESPONSIBILITY OF THE CONTRACTOR(S) TO VERIFY ALL FIELD CONDITIONS PRIOR TO SUBMITTING PROJECT BIDS, ORDERING MATERIALS, GENERATING SHOP DRAWINGS AND SUBMITTALS, AND START OF WORK. THE ARCHITECT SHALL NOT BE HELD LIABLE FOR UN-VERIFIED FIELD CONDITIONS.
7. IT IS THE RESPONSIBILITY OF THE CONTRACTOR TO NOTIFY THE ARCHITECT IN WRITING OF ANY DISCREPANCIES, DIFFERENCES, OR ABNORMALITIES WITH THE FIELD CONDITIONS AGAINST THOSE AS DOCUMENTED IN THE CONSTRUCTION DOCUMENTS. IN A TIMELY FASHION, THE CONTRACTOR SHALL BE HELD LIABLE FOR FAILURE TO REPORT ITEMS TO THE ARCHITECT AND RESPONSIBLE FOR CONSTRUCTION COSTS AND APPLICABLE FEES TO REMEDY CONFLICTS.
8. NO SUBSTITUTIONS, CHANGES, OR OMISSIONS FROM THE CONTRACT DOCUMENTS ARE PERMITTED. CONTRACTOR MAY REQUEST SUBSTITUTIONS, CHANGES, AND/OR OMISSIONS IN WRITING BY THE ARCHITECT.
9. CLARIFICATIONS TO THE DOCUMENTS SHALL BE SUBMITTED IN WRITING TO THE ARCHITECT FOR REVIEW AND RESPONSE.
10. THE CONTRACTOR IS RESPONSIBLE FOR THE REVIEW AND COORDINATION OF WORK AS ENTAILED WITHIN THE CONTRACT DOCUMENTS, INCLUDING THOSE OF THE ARCHITECT'S CONSULTANTS. COORDINATION OF RELATED TRADE WORK SHALL INCLUDE BUT NOT BE LIMITED TO: SEQUENCING, PHASING, FIELD COORDINATION, CUTS AND OPENINGS, INSPECTIONS, AND APPROVALS.
11. THE CONTRACTOR IS RESPONSIBLE FOR VERIFYING ALL QUANTITIES PRIOR TO ORDERING MATERIALS. THE ARCHITECT SHALL NOT BE HELD LIABLE FOR QUANTITIES AS NOTED ON CONTRACT DOCUMENTS.

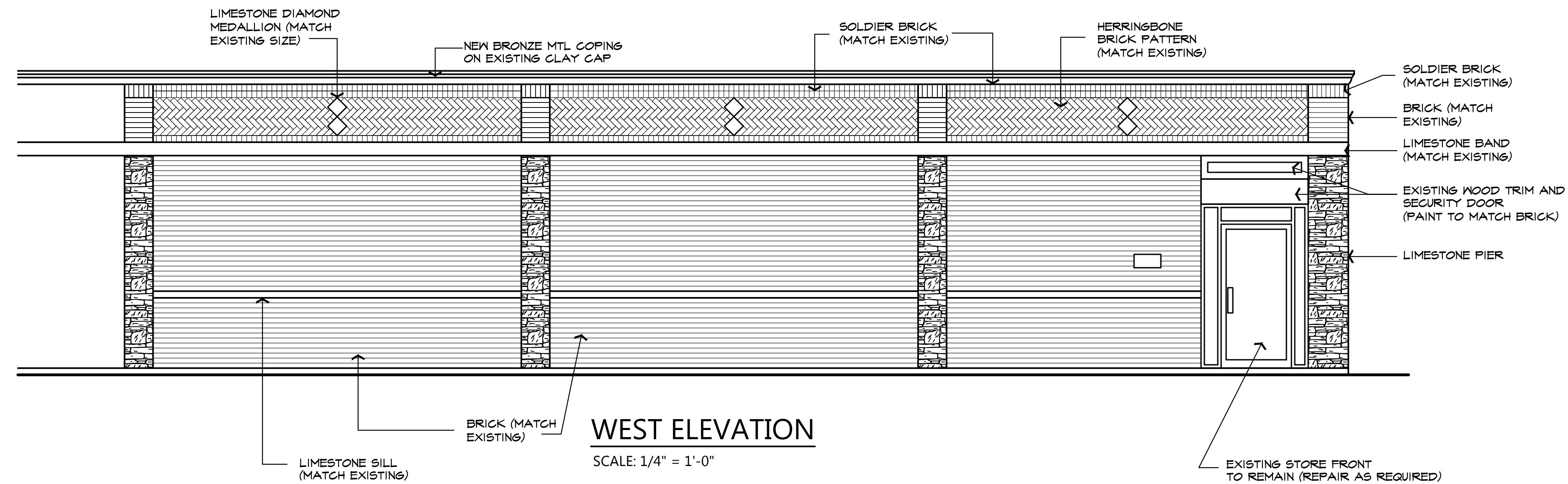
MASONRY WORK:

1. ALL MASONRY WORK IS TO BE IN ACCORDANCE WITH THE LATEST BUILDING CODE REQUIREMENTS FOR MASONRY STRUCTURES (AI 530/ASCE) AND SPECIFICATIONS FOR MASONRY STRUCTURES (ACI 530/ASCE 6) AND N.C.M.A. SPECIFICATIONS.
2. THE REFERENCE MATERIAL STANDARD FOR EACH MASONRY CONSTRUCTION MATERIAL USED ON THIS PROJECT INCLUDING MASONRY UNITS, MORTAR AND METAL ACCESSORIES: MASONRY:
 21. CONCRETE BLOCK: ASTM C90-01a
 22. BRICK: ASTM C62-01
 23. MORTAR: ASTM C270-01a
 24. REINFORCEMENT: ASTM A82-01
3. BLOCK - GRADE A, LOAD BEARING UNITS ASTM C90-01a, IN ACCORD WITH CONCRETE MASONRY ASSOCIATION SPECIFICATIONS.
4. ALL MASONRY BEARING STEEL BEAMS AND LINTELS TO BEAR 2" MINIMUM ON THREE COURSES SOLID MASONRY, WITH 2 - 3/4" BOLTS EACH END, UNLESS OTHERWISE NOTED.
5. UNLESS OTHERWISE NOTED, PROVIDE 4" x 4" x 5/16" ANGLE (LLV) LINTEL FOR EACH 4" OF MASONRY FOR SPANS UP TO 5'-0" MAXIMUM.
6. ALL DOUBLE ANGLE LINTELS SHALL BE WELDED BACK TO BACK WITH A 3/16" FILLER WELD WITH MINIMUM 2 INCH STITCH WELD EVERY 8 INCHES.
7. PROVIDE INSULATION FOR ALL CMU WALLS.
8. MASONRY COMPRESSIVE STRENGTH $f_m = 1500$ PSI MINIMUM.
9. ALL BLOCK SHALL CONFORM TO ASTM C90, TYPE I, WITH A MINIMUM UNIT NET AREA COMPRESSIVE STRENGTH OF 1900 PSI.
10. MORTAR SHALL BE TYPE "S" (1900 PSI) CONFORMING TO ASTM C-270. USE MORTAR CEMENT WHERE EXTERIOR WALLS ARE UNREINFORCED.
11. ALL MASONRY BELOW GRADE SHALL BE GROUTED SOLID.
12. MASONRY GROUT SHALL CONFORM TO ASTM C-416, WITH FEA GRAVEL AGGREGATE AND A MINIMUM STRENGTH OF 2000 PSI, BUT NOT LESS THAN SPECIFIED f_m .
13. PROVIDE HORIZONTAL WIRE TYPE REINFORCING WITH 3 GAUGE SIDE AND CROSS MEMBERS IN EVERY SECOND COURSE (16" O.C.) IN ALL MASONRY WALLS. WALLS WITH VERTICAL REINFORCING SHALL HAVE "LADDER" TYPE REINFORCING. WHERE VENEER MASONRY IS PRESENT, PROVIDE SAME WITH ADJUSTABLE VENEER TIES AT 16" O.C. STAGGERED.

NOTE:
MATCH ALL NEW BRICK WITH EXISTING



SOUTH ELEVATION
SCALE: 1/4" = 1'-0"



WEST ELEVATION
SCALE: 1/4" = 1'-0"



www.GUMMAGROUP.net

7419 Middlebelt Road, Suite 4
West Bloomfield, MI 48322
(248) 865-5555 Fax (248) 865-5015

Project:
UNIVERSITY VILLAGE MARKET

4700 ANTHONY WAYNE DR., DETROIT, MI

Designed R. K.
Drawn R. K.
Approved S. S. P.E.
Scale AS NOTED

Notes

All drawings and written material appearing herein constitute original and unpublished work of Gumma Group and may not be duplicated, used or disclosed without the written consent of Gumma Group.

Do not scale drawings. Use given dimensions only. If not shown, verify correct dimensions with Gumma Group. Contractor shall check and verify all dimensions and conditions at job site.

Project No. _____
JOB#: 22-##

Issued

BUILDING APPROVAL 01/22/2022

Sheet Title and Number

ELEVATIONS

A-100

