

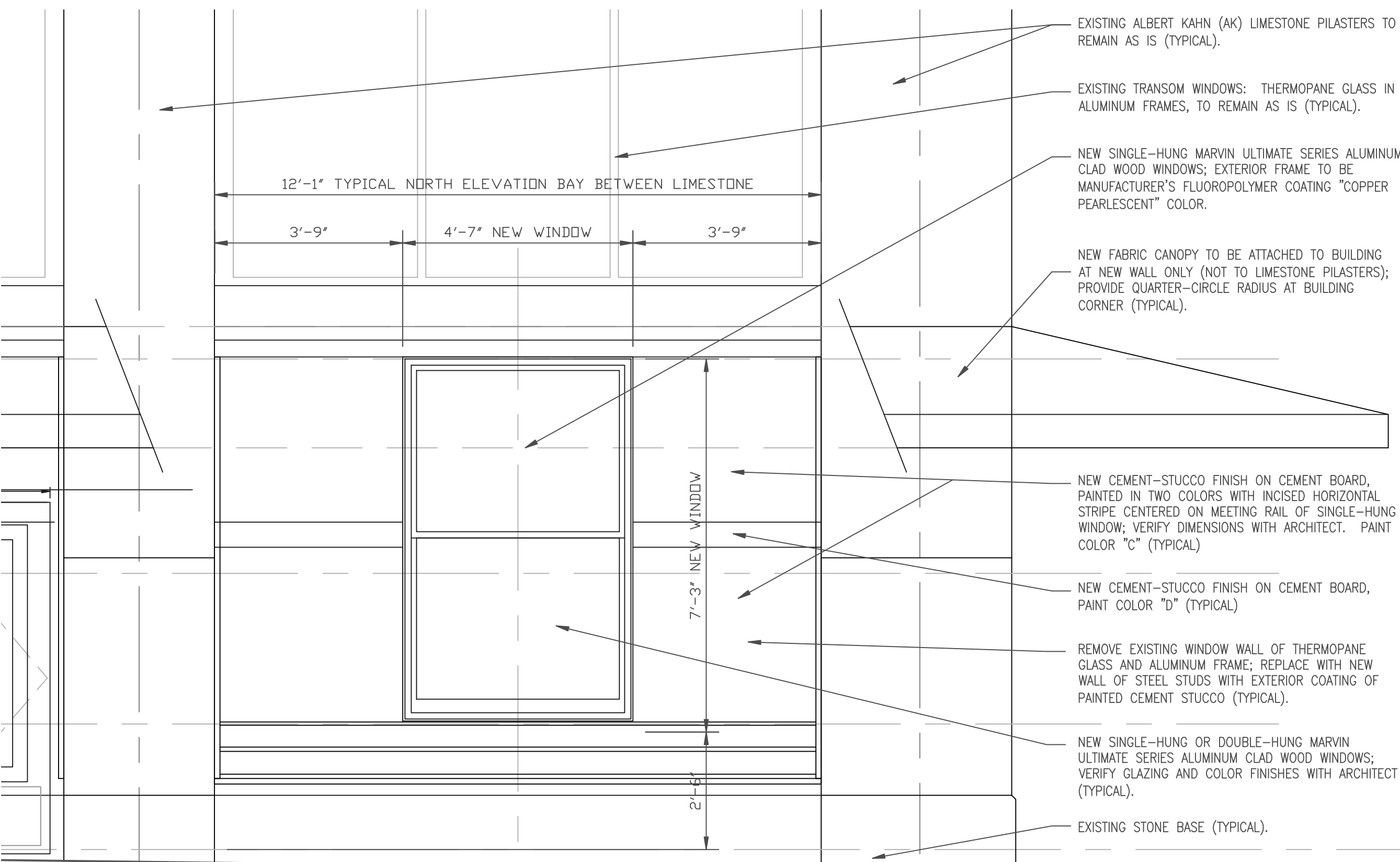


4736 Avery
 Detroit, Michigan 48208
 (313) 831 8116
 mccarch@flash.net

© Copyright 2022
 Michael J McCleer

Renovations to the Campau Building - Bar
 Southeast Corner of Park and Elizabeth Streets Detroit Michigan
 Enlarged Facade Elevation

Review: 07.18.2022
 Review: 08.04.2022
 Review: 09.02.2022



EXISTING ALBERT KAHN (AK) LIMESTONE PILASTERS TO REMAIN AS IS (TYPICAL).

EXISTING TRANSOM WINDOWS: THERMOPANE GLASS IN ALUMINUM FRAMES, TO REMAIN AS IS (TYPICAL).

NEW SINGLE-HUNG MARVIN ULTIMATE SERIES ALUMINUM CLAD WOOD WINDOWS; EXTERIOR FRAME TO BE MANUFACTURER'S FLUOROPOLYMER COATING "COPPER PEARLESCENT" COLOR.

NEW FABRIC CANOPY TO BE ATTACHED TO BUILDING AT NEW WALL ONLY (NOT TO LIMESTONE PILASTERS); PROVIDE QUARTER-CIRCLE RADIUS AT BUILDING CORNER (TYPICAL).

NEW CEMENT-STUCCO FINISH ON CEMENT BOARD, PAINTED IN TWO COLORS WITH INCISED HORIZONTAL STRIPE CENTERED ON MEETING RAIL OF SINGLE-HUNG WINDOW; VERIFY DIMENSIONS WITH ARCHITECT. PAINT COLOR "C" (TYPICAL)

NEW CEMENT-STUCCO FINISH ON CEMENT BOARD, PAINT COLOR "D" (TYPICAL)

REMOVE EXISTING WINDOW WALL OF THERMOPANE GLASS AND ALUMINUM FRAME; REPLACE WITH NEW WALL OF STEEL STUDS WITH EXTERIOR COATING OF PAINTED CEMENT STUCCO (TYPICAL).

NEW SINGLE-HUNG OR DOUBLE-HUNG MARVIN ULTIMATE SERIES ALUMINUM CLAD WOOD WINDOWS; VERIFY GLAZING AND COLOR FINISHES WITH ARCHITECT (TYPICAL).

EXISTING STONE BASE (TYPICAL).

Campau Building - Bar
Enlarged Facade Elevation

SCALE: 1/2" = 1' - 0"