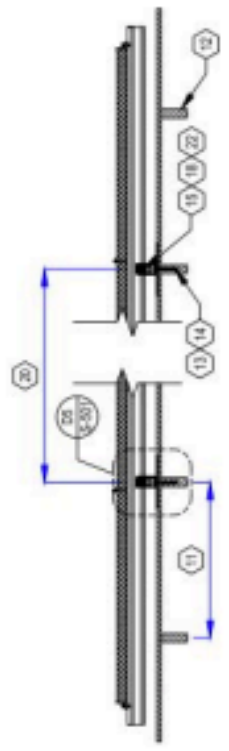


GENERAL NOTES

1. FIELD VERIFY ALL MEASUREMENTS

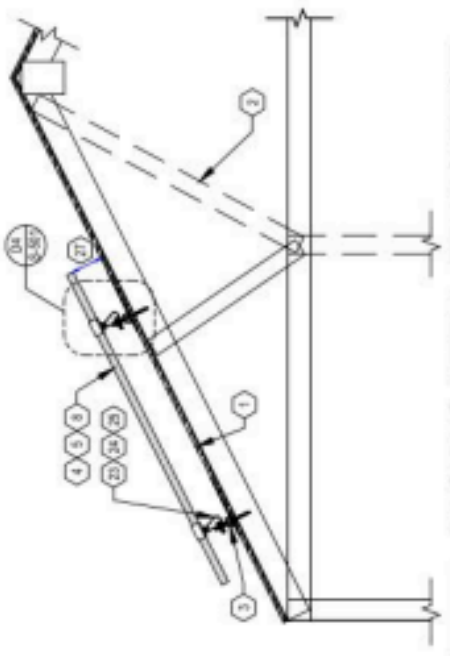
SHEET KEYNOTES

1. ROOF MATERIAL: ASPHALT SHINGLE
2. ROOF STRUCTURE: TRUSS
3. ATTACHMENT TYPE: IRONRIDGE FLASHFOOTZ
4. MODULE MANUFACTURER: SLAFB
5. MODULE MODEL: SLA110M
6. MODULE LENGTH: 64.96"
7. MODULE WIDTH: 38.96"
8. MODULE WEIGHT: 41.89 LBS
9. SEE SHEET A-103 FOR DIMENSIONS
10. MIN. FIRE OFFSET: NO FIRE CODE ENFORCED
11. TRUSS SPACING: 24 IN. O.C.
12. TRUSS SIZE: 2M4 NOMINAL
13. LAG BOLT DIAMETER: BOLT/SCREW SUPPLIED WITH RACKING
14. LAG BOLT EMBEDMENT: PER RACKING MFG SPECIFICATIONS
15. TOTAL # OF ATTACHMENTS: 56
16. TOTAL AREA: 963.7 SQ. FT.
17. TOTAL WEIGHT: 538.25 LBS
18. WEIGHT PER ATTACHMENT: 28.49 LBS
19. DISTRIBUTED LOAD: 2.73 PSF
20. MAX. HORIZONTAL STANDOFF: 48 IN.
21. MAX. VERTICAL STANDOFF: 33 IN.
22. LANDSCAPE: 28 IN. PORTRAIT: 33 IN.
23. STANDOFF STAGGERING: YES
24. RAIL MANUFACTURER (OR EQUIV.): IRONRIDGE
25. RAIL MODEL (OR EQUIVALENT): XR100
26. RAIL WEIGHT: 0.88 PLF
27. MAX. TRUSS SPAN: 8 FT.
28. MODULE CLEARANCE: 3 IN. MIN., 6 IN. MAX.



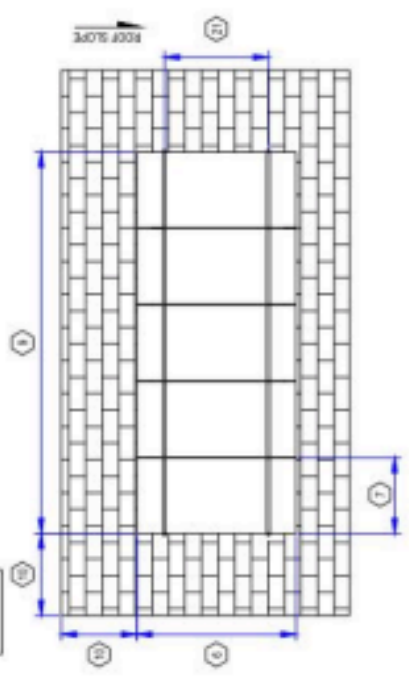
RACKING DETAIL (LONGITUDINAL)
NOT TO SCALE

D2



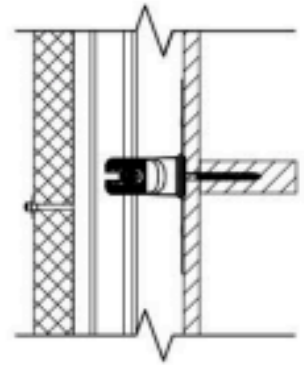
RACKING DETAIL (TRANSVERSE)
NOT TO SCALE

D1



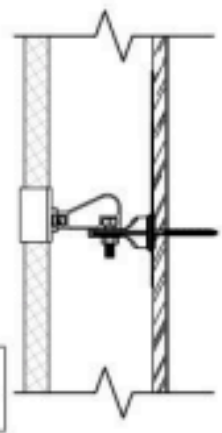
RACKING DETAIL (TOP)
NOT TO SCALE

D3



DETAIL (LONGITUDINAL)
NOT TO SCALE

D5



DETAIL (TRANSVERSE)
NOT TO SCALE

D4

System Mount Overview continued