

CONSULTANT:

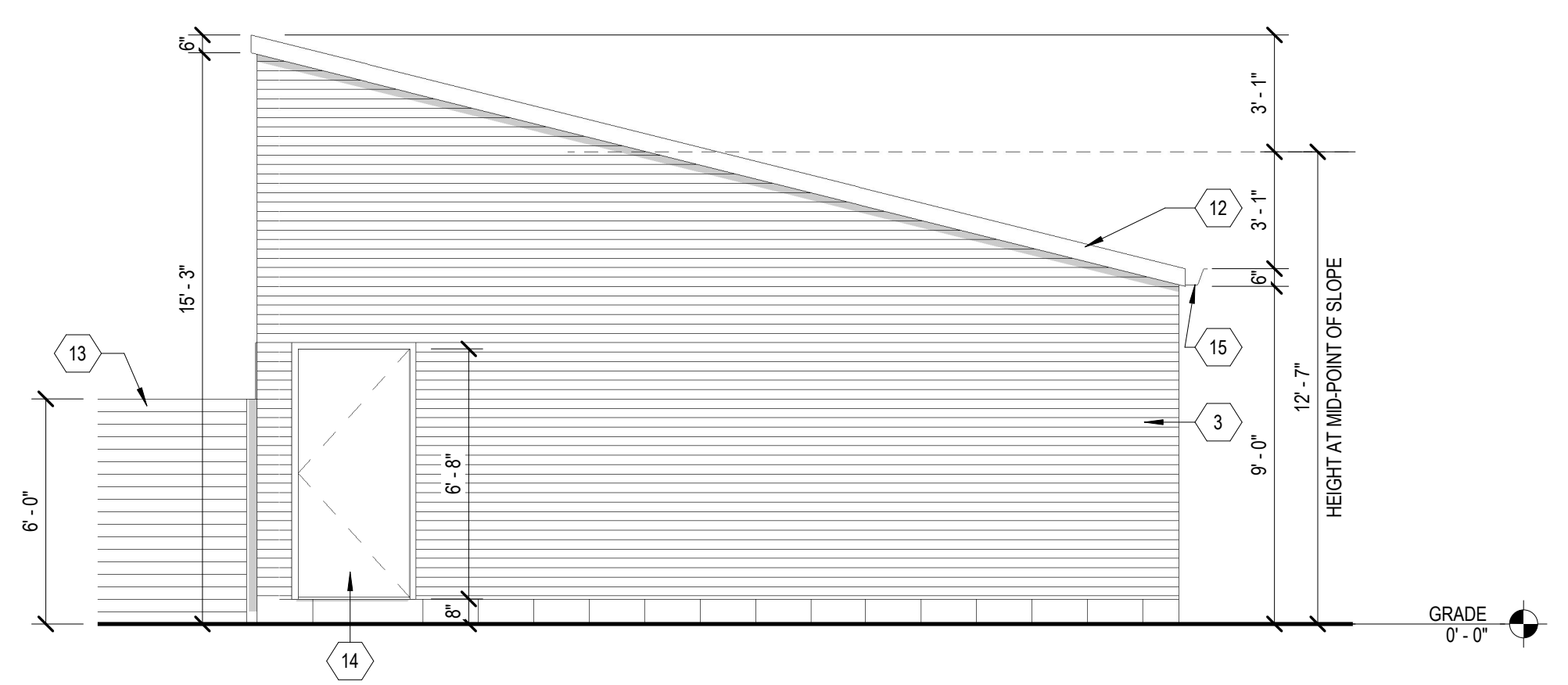
**GENERAL ELEVATION/SECTION NOTES:**

- THIS DRAWING IS DIAGRAMMATIC AND SHOULD BE USED TO DETERMINE THE DESIGN INTENT. THE CONTRACTOR IS RESPONSIBLE FOR THE COMPLETE SET OF WORK AS INDICATED AND SHALL FIELD VERIFY ALL WORK, COORDINATE ALL DRAWINGS / NEW WORK AND SHALL NOTIFY ARCHITECT IMMEDIATELY OF ANY DISCREPANCIES IN THE DOCUMENTS BEFORE PROCEEDING. FAILURE TO DO SO WILL RESULT IN THE CONTRACTOR TAKING FULL RESPONSIBILITY AND LIABILITY FOR SAID DISCREPANCIES.
- ALL DIMENSIONS ARE SHOWN FROM FINISH FACE TO FINISH FACE OF PARTITION UNLESS OTHERWISE NOTED.
- ALL WORK SHALL BE DONE IN ACCORDANCE WITH ALL LOCAL, STATE, COUNTY CODE REGULATIONS, O.S.H.A., AND THE AMERICAN WITH DISABILITIES ACT (ADA). REFER TO THE CODE PLAN FOR MORE INFORMATION.
- ALL FOUNDATIONS TO EXTEND 42" MIN. BELOW GRADE
- ALL FOUNDATIONS ADJACENT TO EXIST. FND'S TO MATCH BOTTOM ON FOOTING ELEVATION.
- UNDER NO CIRCUMSTANCES EXCAVATE BELOW BOTTOM OF EXIST. FND'S TO A MIN. INFLUENCE ZONE DELINEATED BY 1 VERTICAL, 2 HORIZONTAL LINE

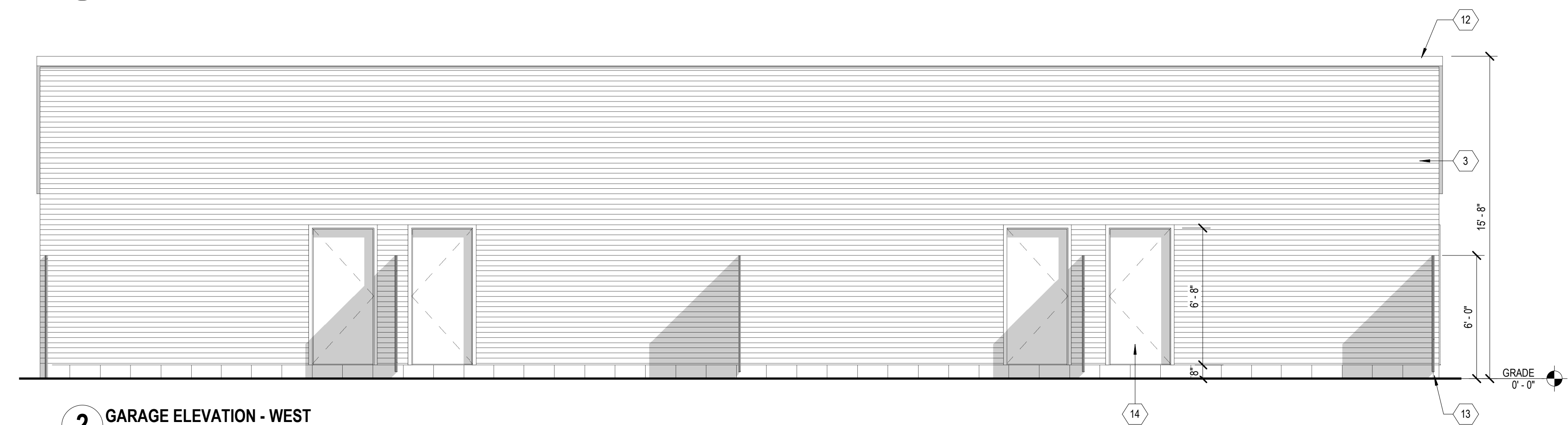
**ELEVATION KEY NOTES:**

(TYPICAL THIS SHEET ONLY)

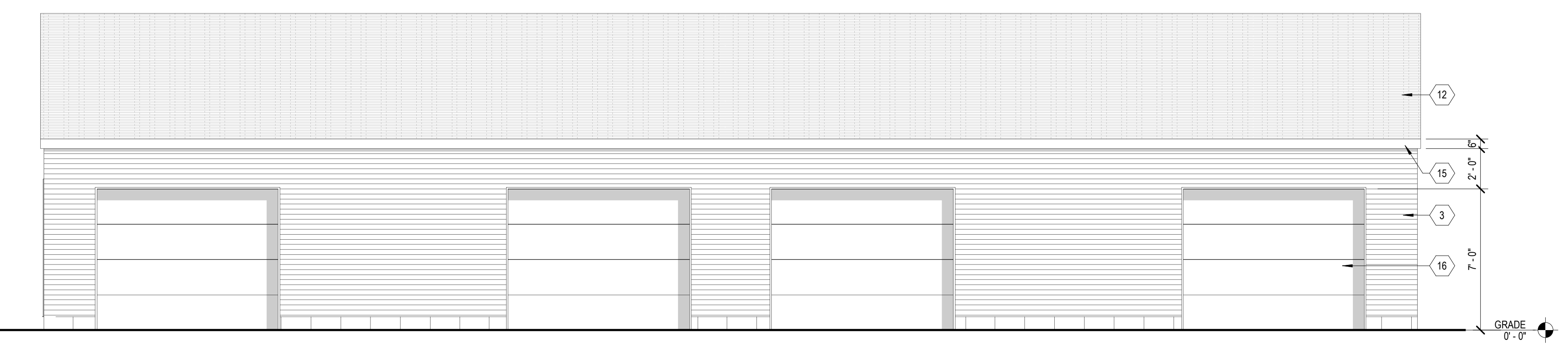
- 1 BRICK VENEER BASIS OF DESIGN:  
BRICKTECH  
ASH VELOUR  
MATTE FINISH  
MORTAR: PLATINUM VELOUR COLOR MATCH
- 2 BRICK SILL AND SOLDIER COURSE BASIS OF DESIGN:  
BRICKTECH  
PLATINUM VELOUR  
MATTE FINISH  
MORTAR: PLATINUM VELOUR COLOR MATCH
- 3 JAMES HARDIE LAP SIDING WITH 3" COLOR-MATCHED TRIM AT EDGES AND CORNERS, AGED PEWTER
- 4 JAMES HARDIE PANEL SIDING AND TRIM, BLACK
- 5 FIBERGLASS CASEMENT WINDOWS, BASIS OF DESIGN: ANDERSEN 100 SERIES, FINISH: BLACK (INTERIOR AND EXTERIOR). CONTRACTOR TO VERIFY WINDOWS IN BEDROOMS MEET EGRESS REQUIREMENTS.
- 6 FIBERGLASS ENTRY DOOR, THERMATRUE, BLACK
- 7 SLIDING PATIO DOOR, BASIS OF DESIGN: ANDERSEN 100 SERIES, FINISH: BLACK (INTERIOR AND EXTERIOR)
- 8 BURNISHED BLOCK WITH BRICK SILL BLOCK BASIS OF DESIGN: CONSUMERS CONCRETE COMPANY ASH
- 9 CONTINUOUS SEAMLESS GUTTER AND DOWNSPOUTS, PREFINISHED BLACK
- 10 PAINTED BRAKE METAL TRIM, BLACK
- 11 ENTRY CANOPY: MEMBRANE ROOFING ON 1/2" PLYWOOD AND CANTILEVERED WOOD FRAMING, PAINTED METAL FASCIA (BLACK)
- 12 ASPHALT SHINGLE ROOFING (ONYX BLACK) WITH METAL DRIP EDGE AND FASCIA (BLACK)
- 13 STAINED WOOD FENCE
- 14 PAINTED HM EXTERIOR DOOR, BLACK
- 15 PREFINISHED ALUM. K-STYLE GUTTER, BLACK
- 16 FLUSH PANEL STEEL GARAGE DOOR, BLACK



**3 GARAGE ELEVATION - SOUTH**  
 SCALE: 1/4" = 1'-0"



**2 GARAGE ELEVATION - WEST**  
 SCALE: 1/4" = 1'-0"



**1 GARAGE ELEVATION - EAST**  
 SCALE: 1/4" = 1'-0"

Project :  
 W. GRAND AND PORTER  
 TOWNHOME  
 DEVELOPMENT  
 INKWELL PARTNERS  
 346 W. GRAND BLVD  
 DETROIT, MI 48216

Issued for :  
 HDC 08/03/2022

NOT FOR CONSTRUCTION

Drawn by :  
 JRM  
 Checked by :  
 JRM

Sheet Title :  
 DETACHED GARAGE  
 ELEVATIONS

Project No. :  
 2020041

Sheet No. :

**A3.4**