

## PROJECT DAC - Bowling Abbey

241 Madison St.  
Detroit, MI 48226

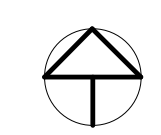
CONSULTANT

PROFESSIONAL SEAL

© 2021 ROSSETTI

#	DESCRIPTION	DATE
1	Basement Extension Permit	01/21/22
2	Partial Review	02/14/22
3	Owner Review	02/28/22
4	Plan Check	03/08/22
5	Issued for Construction	03/21/22
6	ASI #3 - Revised Millwork Drawings	04/14/22
7	ASI #4 - Site Conditions Coordination	05/13/22

KEY PLAN



SHEET TITLE  
Floor Plan - Basement Level

PROJECT #  
2021-028

SHEET #  
**A-101**

© 2022 ROSSETTI

### FLOOR PLAN LEGEND (RENOVATION)

#### NEW WORK

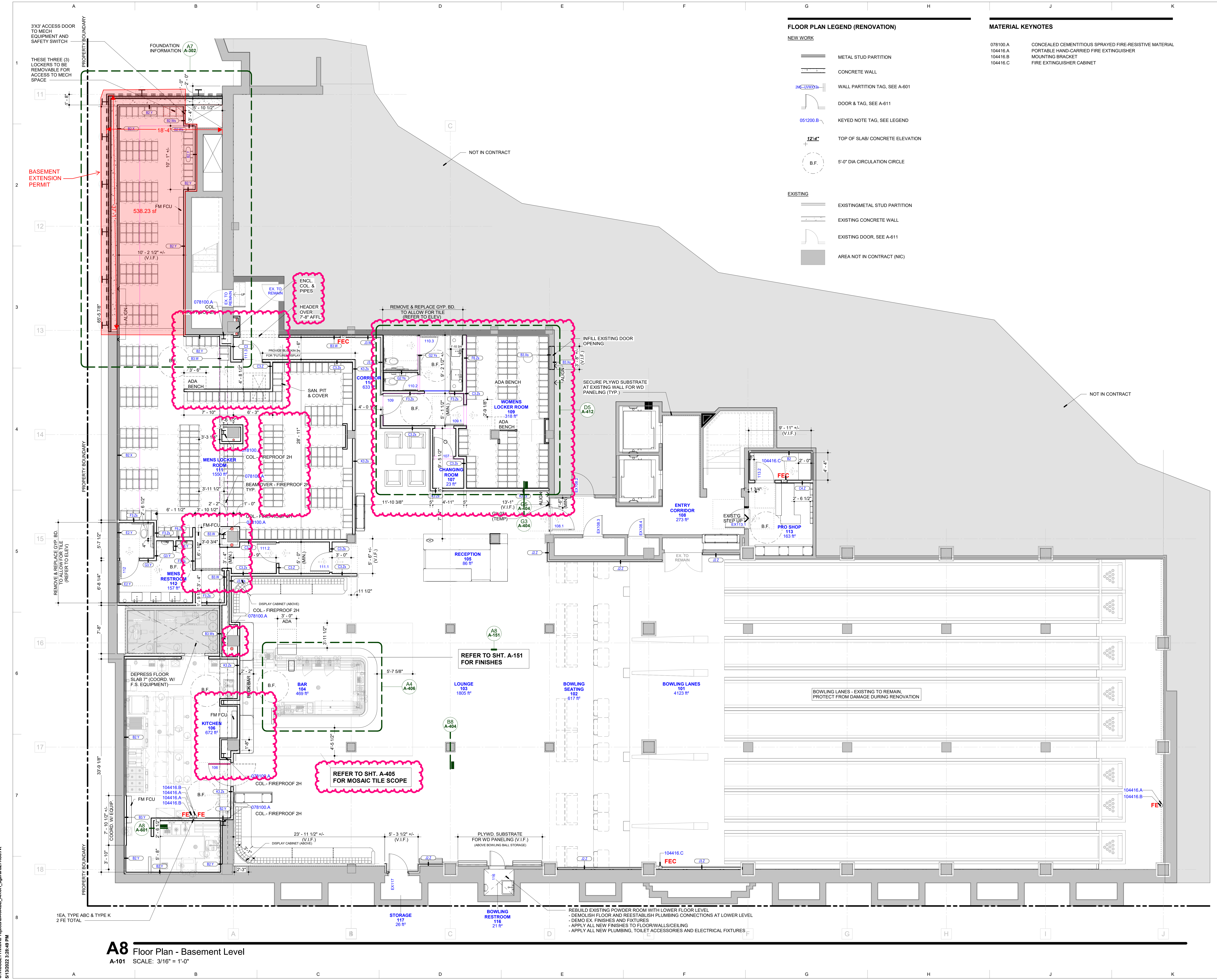
- METAL STUD PARTITION
- CONCRETE WALL
- WALL PARTITION TAG, SEE A-601
- DOOR & TAG, SEE A-611
- KEYED NOTE TAG, SEE LEGEND
- TOP OF SLAB/ CONCRETE ELEVATION
- 5'-0" DIA CIRCULATION CIRCLE

#### EXISTING

- EXISTING METAL STUD PARTITION
- EXISTING CONCRETE WALL
- EXISTING DOOR, SEE A-611
- AREA NOT IN CONTRACT (NIC)

### MATERIAL KEYNOTES

- 078100.A CONCEALED CEMENTITIOUS SPRAYED FIRE-RESISTIVE MATERIAL
- 104416.A PORTABLE HAND-CARRIED FIRE EXTINGUISHER
- 104416.B MOUNTING BRACKET
- 104416.C FIRE EXTINGUISHER CABINET



**A8** Floor Plan - Basement Level  
A-101 SCALE: 3/16" = 1'-0"

C:\ROSSETTI\Projects\DAC\B\B\_ARCHL\_sgen\227108.rvt  
5/13/2022 3:28:49 PM