

BRUSH PARK ELEMENTA - KIPLING DEVELOPMENT

HISTORIC DISTRICT COMMISSION UPDATE

MAY 2022

Developer:

Kipling Development

Architect:

AMY BAKER ARCHITECT

amybakerarchitect.com

Designer

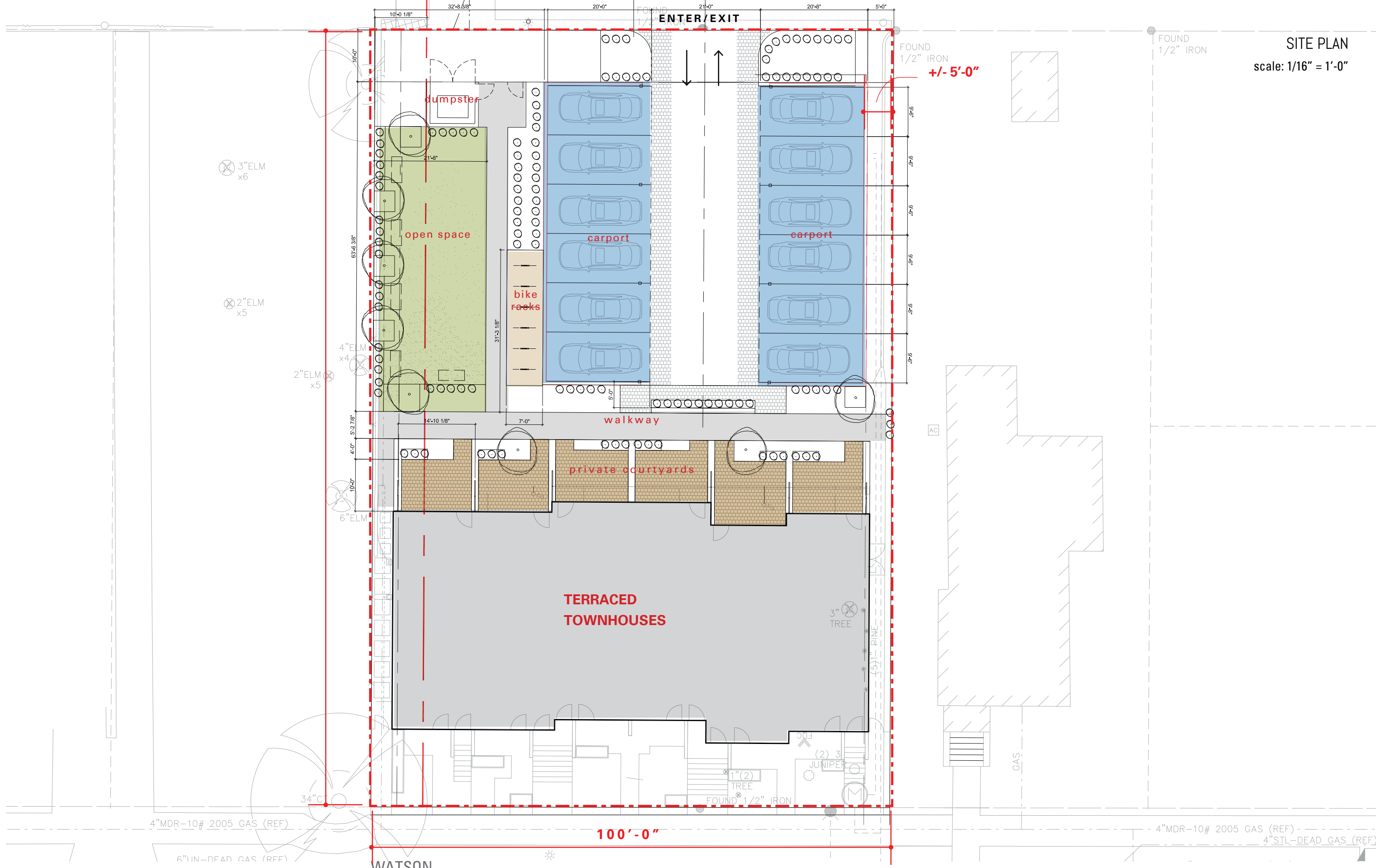
BOLD STUDIO

boldstudiodesign.com

Civil/Landscape Architect:

PEA GROUP

SITE PLAN
scale: 1/16" = 1'-0"











NORTH ELEVATION (COURTYARD)



NORTH ELEVATION (ALLEY)

CMU dumpster enclosure





