

259 W Grand Blvd
Detroit MI 48216

Window Replacement

Property Owner: Erin Ebsch

Contractor: Alexandria Home Solutions
(Gamal Usmanov)

Proposed Work

- Removal of 11 existing window units
- Installation of 11 new window units

- 9 of 11 existing window units are vinyl frame
- 2 of 11 existing window units are wood frame

- All 11 new units proposed are wood frame with aluminum clad (Pella Lifestyle Series) to better match a historically correct option and to remove the inappropriate vinyl window units.

Proposed Work (2)

- Units are being removed and replaced instead of repaired due to leaking that is occurring around the frame of the windows and rotting that is present in the window frames and sashes (wood units)
- When the installation is completed, the new window units will retain the original wood brickmould/trim that currently exists on all the window units, as well as the pilasters/trim on the front 3 dormer windows. The existing trim will not be capped over with any aluminum.

Proposed Work (3)

- The applicant would like the new window units to have a black frame. If the black frame is not appropriate, we would propose a white frame.
- The applicant would like the new window units to have **no** grids/muntins. If grids/muntins are required, we would propose standard divided light (SDL) grids . Grids/muntins would match the quantity and design of the existing grids/muntins, but would be SDL, **not** interior between the glass.

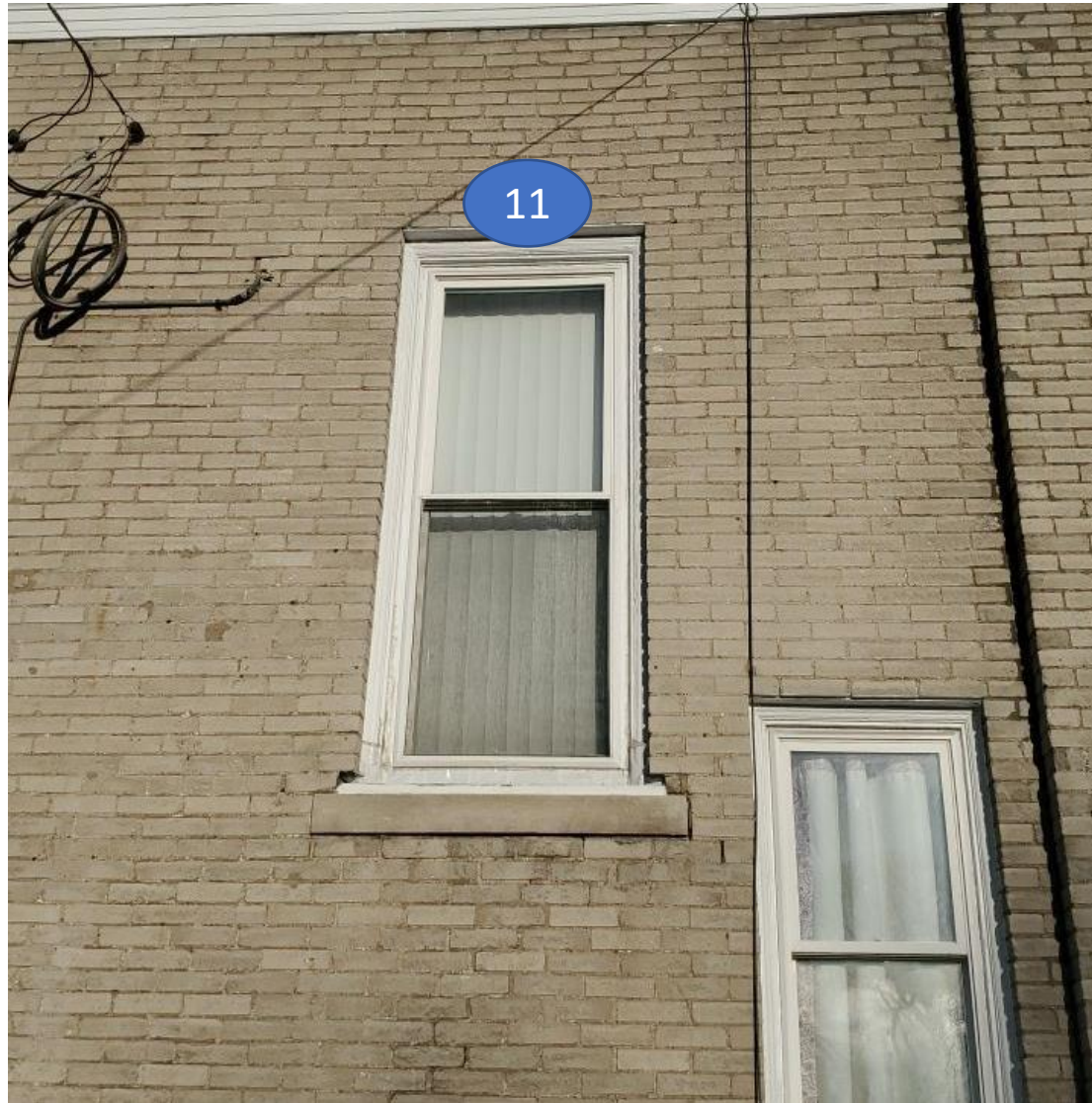
In order of applicants preference:

- Option 1 – Black frames, no grids/muntins
- Option 2 – Black frames, standard divided lite grids
- Option 3 – White frames, no grids/muntins
- Option 4 – White frames, standard divided lite grids

Window Units (FRONT)



Window Unit (BACK)



1



2



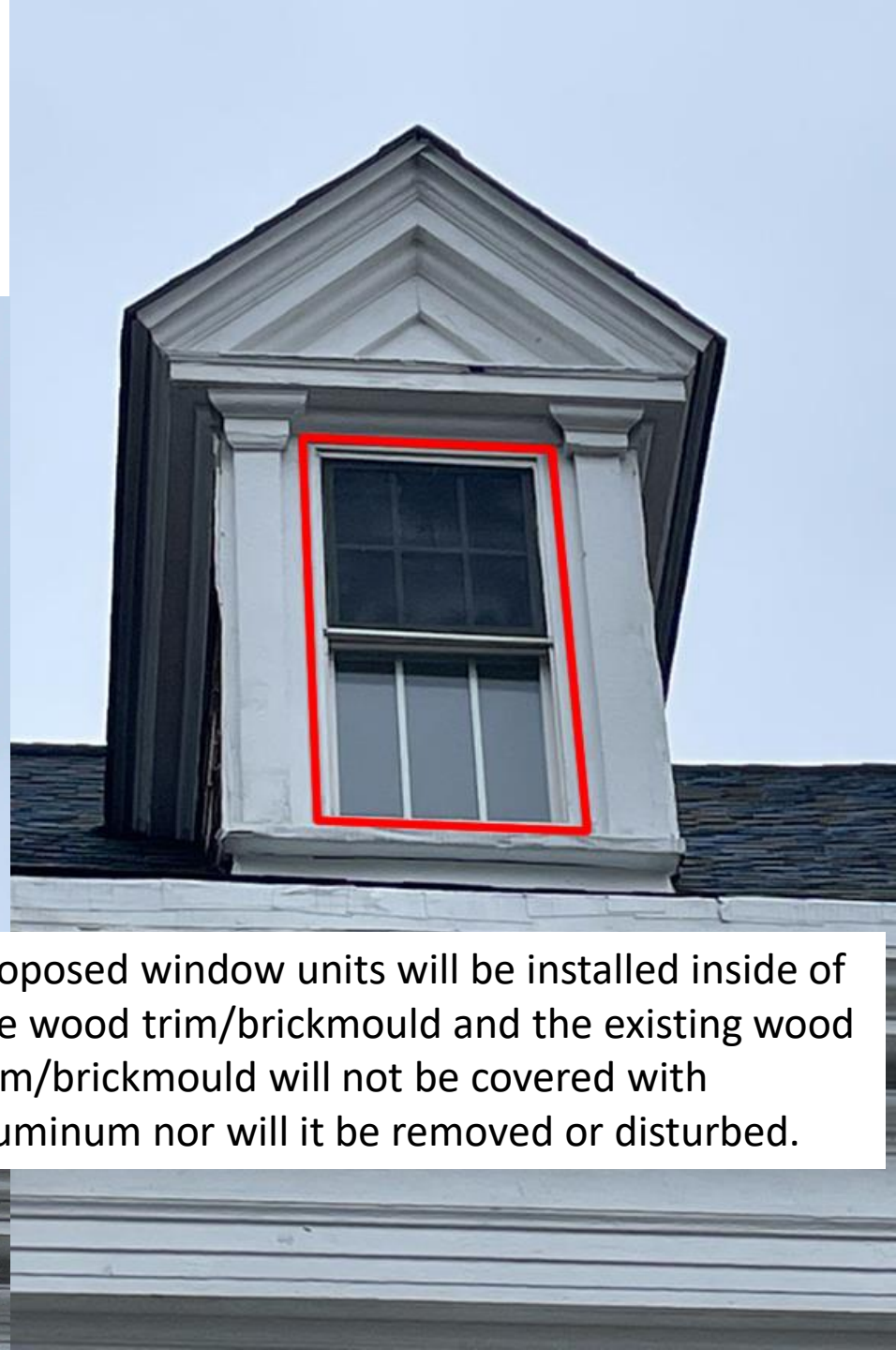
3



1 2 3 Exterior



1 2 3 Exterior



Proposed window units will be installed inside of the wood trim/brickmould and the existing wood trim/brickmould will not be covered with aluminum nor will it be removed or disturbed.

4/5 7/8 Interior

Water is leaking into the plaster below these units, and into the electrical boxes.



4/5 7/8 Interior



4/5 7/8 Exterior

Proposed window units will be installed inside of the wood trim/brickmould and the existing wood trim/brickmould will not be covered with aluminum nor will it be removed or disturbed.



6



10 Interior



10



10 Exterior



Proposed window units will be installed inside of the wood trim/brickmould and the existing wood trim/brickmould will not be covered with aluminum nor will it be removed or disturbed.





Lifestyle Series Double-Hung

Detailed Product Description

Frame

- Select softwood, immersion treated with Pella's EnduraGuard® wood protection formula in accordance with WDMA I.S.-4. The EnduraGuard formula includes three active ingredients for protection against the effects of moisture, decay, stains from mold and mildew. Plus, an additional ingredient adds protection against termite damage.
- Interior exposed surfaces are clear pine.
- Exterior surfaces are clad with aluminum.
- Components are assembled with screws, staples and concealed corner locks.
- Overall frame depth is 5" (127 mm) for a wall depth of 3-11/16" (94mm).
- Jamb liner shall be high-impact polyvinyl chloride backed by continuous hard-tempered aluminum springs.
- Optional factory applied jamb extensions are available.
- Optional factory installed fold-out installation fins with flexible fin corners.
- Optional factory-applied EnduraClad® exterior trim.

Sash

- Select softwood, immersion treated with Pella's EnduraGuard® wood protection formula in accordance with WDMA I.S.-4. The EnduraGuard formula includes three active ingredients for protection against the effects of moisture, decay, stains from mold and mildew. Plus, an additional ingredient adds protection against termite damage.
- Interior exposed surfaces are clear pine.
- Exterior surfaces are clad with aluminum, lap-jointed and sealed.
- Corners mortised and tenoned, glued and secured with metal fasteners.
- Sash thickness is 1-5/8" (41 mm).
- Sashes tilt for easy cleaning.

Weatherstripping

- Foam with 3 mm skin at head and bottom rail. Thermal-plastic elastomer bulb with slip-coating set into upper sash for tight contact at check rail.
- Secondary polyvinyl chloride leaf-type weatherstrip on bottom sash at sill.
- Jamb liner to seal against sides of sash.

Glazing System

- Quality float glass complying with ASTM C 1036.
- High altitude glazing available.
- Silicone groove-glazed 11/16" [obscure] dual-seal insulating glass [[annealed] [tempered]] [[Advanced Low-E] [SunDefense™ Low-E] [AdvancedComfort] [NaturalSun Low-E] with argon].

Exterior

- Exterior aluminum surfaces are finished with EnduraClad® protective finish, in a multi-step, baked-on finish.
- Color is [White] [Tan] [Putty] [Brown] [Poplar White] [Portobello] [Hartford Green] [Morning Sky Gray] [Brick Red] [Black].

Interior

- [Unfinished, ready for site finishing] [factory primed with one coat acrylic latex] [factory prefinished [White] [Linen] [Bright White] [stain 1]].

Hardware

- Galvanized block-and-tackle balances are connected to sash with a polyester cord and concealed within the frame.
- Factory installed self-aligning surface-mounted sash lock. Two sash locks on units with frame width 33-1/4" and greater.
- Optional Sash lift furnished for field installation. Two lifts on units with frame width 33-1/4" and greater.
- Finish is [baked enamel [Champagne] [White] [Brown] [Matte Black]] [Satin Brass] [Satin Nickel].
- Champagne locks are standard on unfinished units; White locks are standard on factory prefinished white units.

Optional Products

Grilles

- Simulated-Divided-Light [with optional spacer]
 - 7/8" Grilles permanently bonded to the interior and exterior of glass.
 - Patterns are [Traditional] [Prairie] [Cross] [Top Row] [Custom - Equally Divided].
 - Interior surfaces are [unfinished, ready for site finishing] [factory primed] [pine: factory prefinished [White] [Linen White] [Bright White] [stain 1]]. Exterior grilles to match the exterior cladding color.
 - Available only on units glazed with Low-E insulated glass with argon.
- or -
- Grilles-Between-the-Glass 2
 - Insulating glass contains 3/4" contoured aluminum grilles permanently installed between two panes of glass.
 - Patterns are [Traditional] [9-Lite Prairie] [Top Row] [Custom - Equally Divided].
 - Interior color is [White] [Ivory] [Tan 3] [Brickstone] [Black] [Putty 3] [Brown 3] [Harvest] [Cordovan].
 - Exterior color [matched to the exterior cladding color] [White] 4.

Screens

- InView™ screens
 - Full-size Vinyl-coated 18/18 mesh fiberglass screen cloth complying with the performance requirements of SMA 1201, set in aluminum frame fitted to outside of window, supplied complete with all necessary hardware.
 - Screen frame finish is baked enamel, color to match window cladding.

Hardware

- Optional factory applied limited opening device available for vent units in steel, nominal 3-3/4" opening.
- Optional window opening control device available for field installation. Device allows window to open less than 4" with normal operation, with a release mechanism that allows the sash to open completely. Complies with ASTM F2090-10.

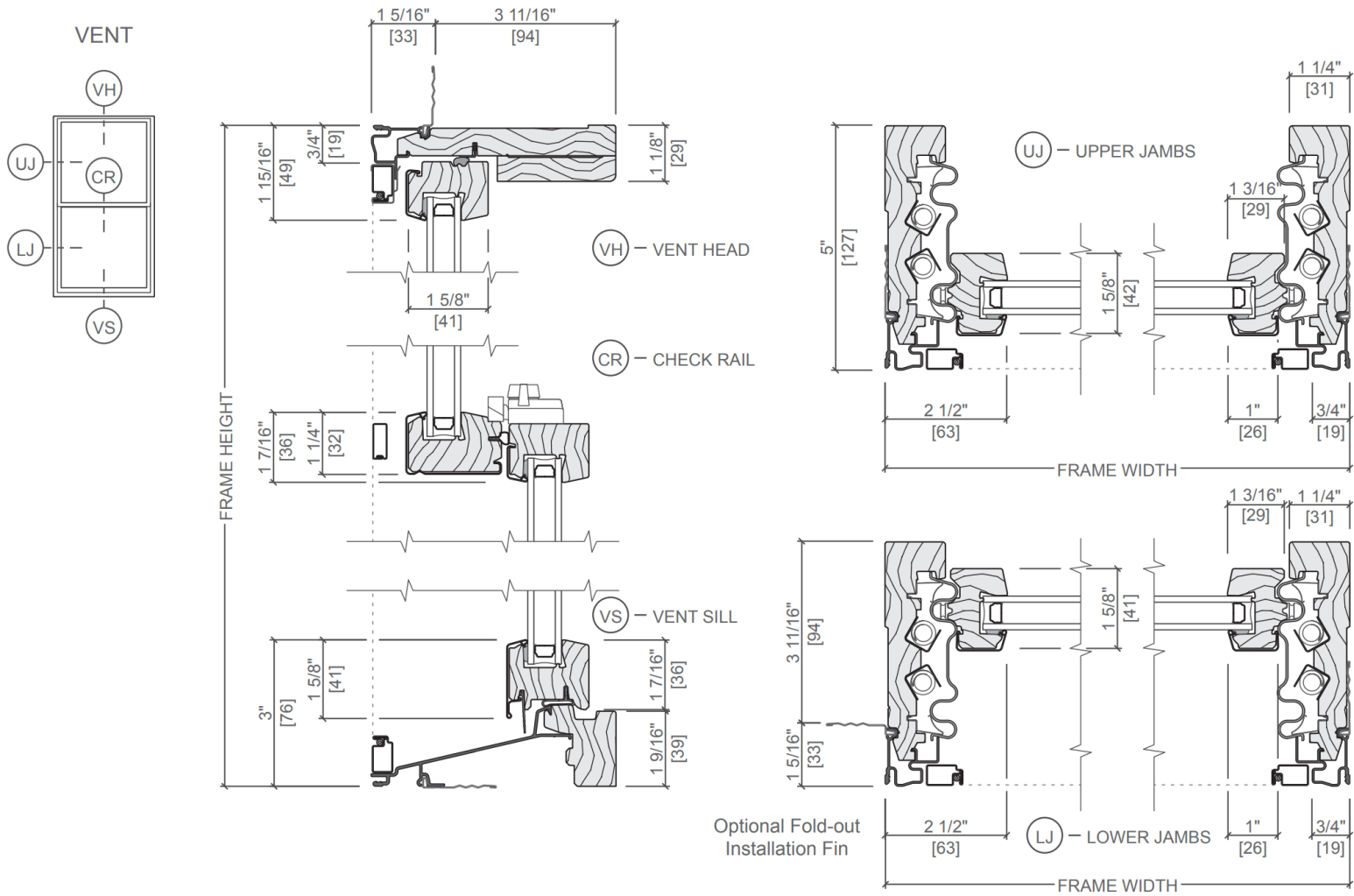
Sensors

- Optional factory installed integrated security sensors available in vent units.



Lifestyle Series Double-Hung

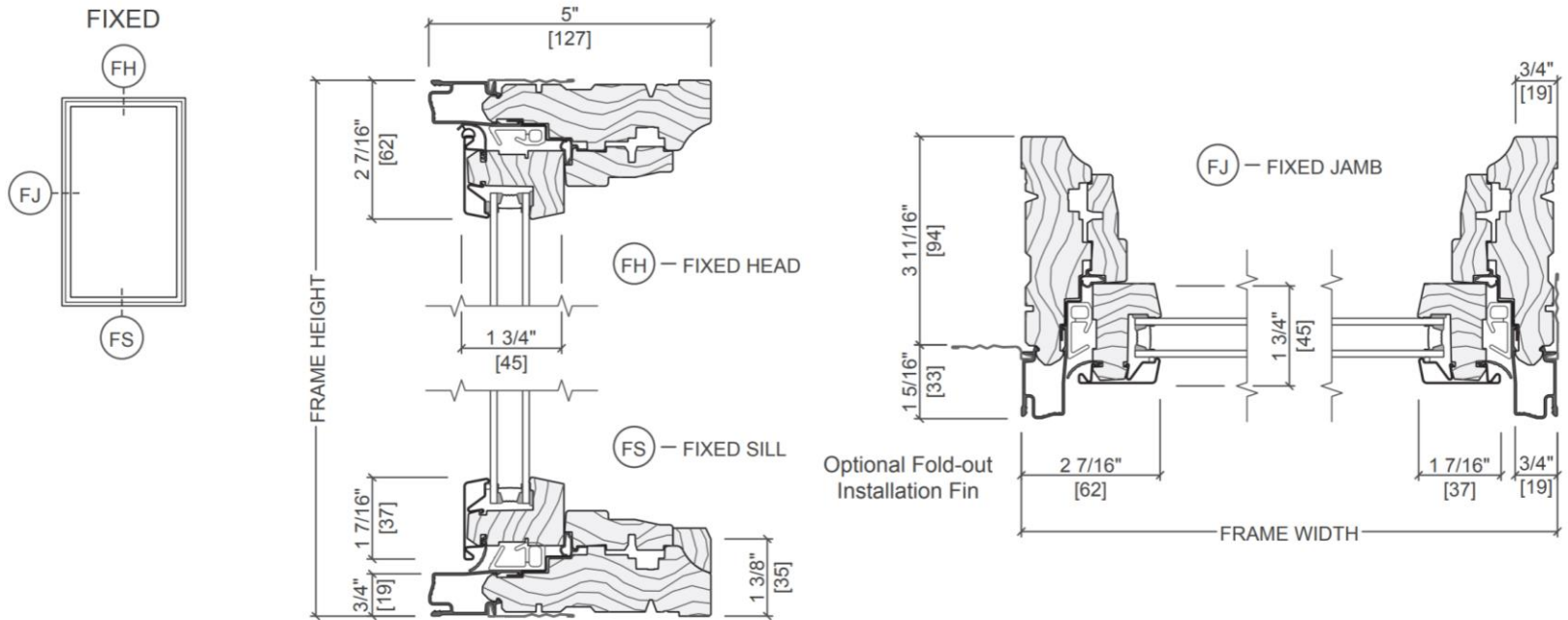
Unit Sections





Lifestyle Series Double-Hung

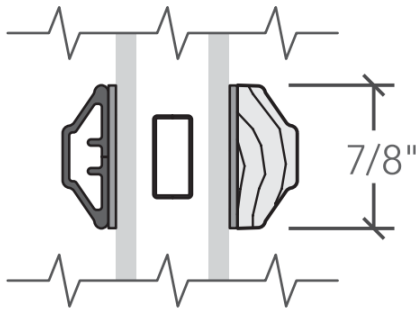
Unit Sections



Additional Product Information

Aluminum-Clad Exterior Colors

Our low-maintenance EnduraClad® exterior finish resists fading and helps protect windows and patio doors for years. Seacoast EnduraClad protective finish for coastal projects with high salt exposure is also available.



Simulated- Divided-Light with Spacer 7/8"

In order of applicants preference:

Option 1 – Black frames, no grids/muntins

Option 2 – Black frames, standard divided lite grids

Option 3 – White frames, no grids/muntins

Option 4 – White frames, standard divided lite grids

Project Contract



Michigan Company Builder License: 2102215564

CONTRACT

Prepared for:

Erin Ebsch
259 w grawd blvd
Detroit, MI 48216
erinebsch@gmail.com
(313) 999-3956

March 1, 2022

No. 22622

Alexandria Windows Doors & Metal Roofing LLC.
24293 Telegraph Road, Suite 180, Southfield, Michigan 48033
P: (248) 809-3214 | info@alexandriawd.com
www.alexandriawd.com

Scope of Work

Total

Install Windows

\$24,936.00

PROJECT LEAD TIME: 14-24 WEEKS

SCOPE OF WORK

-REMOVE AND REPLACE ALL WINDOW UNITS LISTED BELOW

PIC 77*70 Din

Color out: Black or white
Color In: unfinished

PIC 77*70 LIV

Color out: Black or white
Color In: unfinished

DH 33*83 Stairs

Color out: Black or white
Color In: unfinished
TEMP glass

DH 24*46 Attic QTY3

Color out: Black or white
Color In: primed

DH 35*64 Mast Bed QTY4

Color out: Black or white
Color In: unfinished

DH 23*46 Mast Bed

Color out: Black or white
Color In: unfinished

Scope of Work

Total

WINDOW UNIT FEATURES

PELLA LIFESTYLE SERIES wood windows
aluminum-clad wood exterior
unfinished or primed interior
Insulated Dual Low-E glass

SDL grids for 8 windows ADD \$3600

Down Payment: \$8312
Down Payment Method: Cash/Check/CC
Payment Due Upon Install Start: \$8312
Payment Due Upon Install Start Method: Cash/Check/CC
Payment Due Upon Install Completion: \$8312
Payment Due Upon Install Completion Method: Cash/Check/CC

Subtotal: \$24,936.00

Tax: \$0.00

Grand Total: \$24,936.00

x

Erin Ebsch

Erin Ebsch

x

Company Authorized Signature

Samal Usmanov