

FIRST FLOOR PLAN
SCALE: 1/8" = 1'-0"

GENERAL NOTES

- A FIRESTOPPING: PROVIDE FIRESTOPPING ASSEMBLIES AT ALL PENETRATIONS AND INTERRUPTIONS TO FIRE RATED ASSEMBLIES WHICH PROVIDE THE SPECIFIED FIRE RATING FOR PARTITION OR FLOOR. SEE SPECIFICATIONS.
- B FIRE RATED PARTITIONS SHALL BE CONTINUOUS FROM FLOOR TO STRUCTURE ABOVE AND SHALL BE FIRE STOPPED TIGHTLY TO STRUCTURE PER CODE (U.L. SYSTEM). SEE PARTITION SCHEDULE/AS01 FOR ADDITIONAL REQUIREMENTS.
- C PARTITIONS ARE DIMENSIONED FROM FINISH FACE TO FINISH FACE, UNLESS NOTED OTHERWISE. MAINTAIN DIMENSIONS MARKED 'CLEAR'. ALLOW FOR THICKNESS OF FINISHES.
- D COORDINATE AND PROVIDE BACKING FOR MILLWORK AND ITEMS ATTACHED OR MOUNTED TO WALLS OR CEILINGS.
- E CONTRACTOR TO PROVIDE BLOCKING AS REQUIRED. COORDINATE LOCATIONS AND EXTENTS OF BLOCKING WITH PRODUCT MANUFACTURERS AND SHOP DRAWINGS.
- F LOCATE DOOR FRAMES 6" FROM INSIDE CORNER TO DOOR OPENING, UNLESS NOTED OTHERWISE.
- G ALL INTERIOR GLAZING INCL. DOORS, SIDELITES, & BORROWED LITES SHALL BE CLEAR LAMINATED SAFETY GLASS OR CLEAR TEMPERED SAFETY GLAZING. UNLESS NOTED OTHERWISE.
- H RECESSED ITEMS (GREATER THAN 16 SQ. IN.) IN RATED AND/OR SMOKE WALLS, INCLUDING ELEC PANELS, ELEC DUCTS, MED GAS VALVE BOXES, FIRE EXT CABINETS, ETC. SHALL BE BACKED WITH 5/8" TYPE 'X' GYPSUM BOARD TO MAINTAIN RATING FIRE WALL.
- I SEMI-RECESSED FIRE EXTINGUISHER (FE) ARE SHOWN ON PLAN - SEE PARTITION SCHEDULE/AS01 FOR TYPICAL DETAILS. FINAL LOCATION OF FIRE EXTINGUISHERS SHALL BE REVIEWED IN FIELD WITH BUILDING OFFICIAL PRIOR TO INSTALLATION ROUGH-IN.
- J COORDINATE TELECOMMUNICATIONS, A/V, DATA AND SECURITY SYSTEMS INSTALLATIONS. PROVIDE AND INSTALL TELEPHONE AND ELECTRICAL PANEL BOARDS, PANEL BOARDS SHALL BE 4' X 8' X 3/4" THICK, PLYWOOD, FIRE RETARDANT TREATED.
- K COORDINATE WITH ROOM FINISH AND MATERIAL SCHEDULE.
- L COORDINATE WITH ENLARGED ROOM PLAN FOR ADDITIONAL REQUIREMENTS.
- M SEE PARTITION SCHEDULE/AS01 FOR ADDITIONAL REQUIREMENTS.

WORK IN EXISTING STRUCTURES

- O WHERE NEW GYPSUM BOARD PARTITIONS ARE A CONTINUATION OF AN EXISTING PARTITION OR COLUMN ENCASEMENT, THE FACE OF THE NEW GYPSUM BOARD SHALL BE ALIGNED WITH THE FACE OF THE EXISTING SURFACE. WHERE A NEW GYPSUM BOARD PARTITION IS SHOWN INTERSECTING A COLUMN ENCASEMENT THE CENTERLINE OF THE WALL SHALL BE CENTERED ON THE COLUMN ENCASEMENT.
- P WHERE NEW OR IN-FILL PARTITION ABUTS EXISTING PARTITION, FACE OF PARTITIONS SHALL ALIGN, UNLESS NOTED OTHERWISE.
- Q PARTITIONS WITH EXISTING FRAMING MAY REQUIRE REWORK TO ACCOMMODATE NEW OPENINGS, ETC.
- R ALTERNATE PARTITION ASSEMBLIES THAT VARY FROM THE ASSEMBLIES PROVIDED IN THE PARTITION SCHEDULE TO BE SUBMITTED BY THE CONTRACTOR TO THE ARCHITECT FOR CONSIDERATION. ALTERNATE ASSEMBLIES MAY REQUIRE REVIEW BY THE LOCAL JURISDICTION. ANY REVIEW SHALL NOT CONSTITUTE A CLAIM FOR DELAY.
- S WHERE NEW FINISHES ARE SPECIFIED ON THE FINISH PLAN REMOVE ALL EXISTING FINISHES. PATCH AND REPAIR WALLS AND FLOOR TO ENSURE EVEN SURFACE. PREPARE THEM TO ACCEPT NEW SCHEDULED FINISH PER MANUFACTURER'S INSTRUCTIONS. SEE SPECIFICATIONS FOR ADDITIONAL REQUIREMENTS.
- T PROVIDE NEW STRUCTURAL LINTELS AT ALL MASONRY WALLS WHERE PREVIOUS OPENING DOES NOT HAVE A LINTEL AND AT NEW OPENINGS. LINTEL SHALL EXTEND MINIMUM 8" EITHER SIDE OF OPENING, UNLESS NOTED OTHERWISE. SEE STRUCTURAL.
- U PROVIDE TEMPORARY DUSTPROOF PARTITIONS AS REQUIRED TO PROTECT ALL EXISTING AREAS FROM DAMAGE.
- V WHERE SLAB ON GRADE REMOVAL IS REQUIRED FOR UTILITY PLACEMENT REFER TO TYPICAL CONCRETE SLAB INFILL DETAIL ON SHEET A...

CONSTRUCTION KEYNOTES

- 002 OUTLINE OF FLOOR ABOVE
- 003 BARREL VAULT CEILING ABOVE
- 006 DTE TRANSFORMER
- 008 CANOPY ABOVE
- 013 GUARDRAIL BY TENANT
- 017 OUTLINE OF FUTURE ROOF DECK
- 018 AREA OF SUNKEN FLOOR
- 019 INFILL FLOOR AS REQUIRED TO PROVIDE LEVEL SURFACE
- 021 NEW ROOF MEMBRANE - SEE SPECIFICATIONS AND STRUCTURAL
- 023 GUTTER AND DOWNSPOUT
- 028 MECHANICAL EQUIPMENT SCREEN WALL BY FUTURE TENANT
- 029 APPROXIMATE CRAWL SPACE EXTENTS - VIF
- 034 FACE OF NEW WALL TO ALIGN W/EDGE OF EXIST PLASTER.

KraemerDesignGroup
 Detroit, MI | Toledo, OH | Charleston, SC
 1420 Broadway | Detroit, MI 48226 | 313.963.3399 | 313.965.5555
 www.kraemerdesigngroup.com

Architect

Consultant

INNOVATIVE PROPERTY PARTNERS LLC
 630 WOODWARD AVE.
 DETROIT, MI

Owner

1201 WASHINGTON BLVD.
 1201 WASHINGTON BLVD.
 DETROIT, MI

Project

PRELIMINARY NOT FOR CONSTRUCTION

Seal

THIS DOCUMENT AND THE IDEAS AND DESIGNS INCORPORATED HEREIN, AS AN INSTRUMENT OF PROFESSIONAL SERVICE ARE THE PROPERTY OF KRAEMER DESIGN GROUP, LLC AND ARE NOT TO BE USED IN WHOLE OR IN PART FOR ANY REASON WITHOUT THE WRITTEN AUTHORIZATION OF KRAEMER DESIGN GROUP, LLC.

© COPYRIGHT 2022 KRAEMER DESIGN GROUP, LLC

HDC SUBMISSION 05-02-22

Revision _____ Date _____

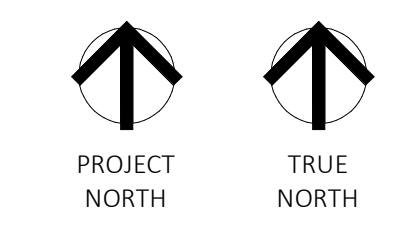
Date _____

Project Number 2020043

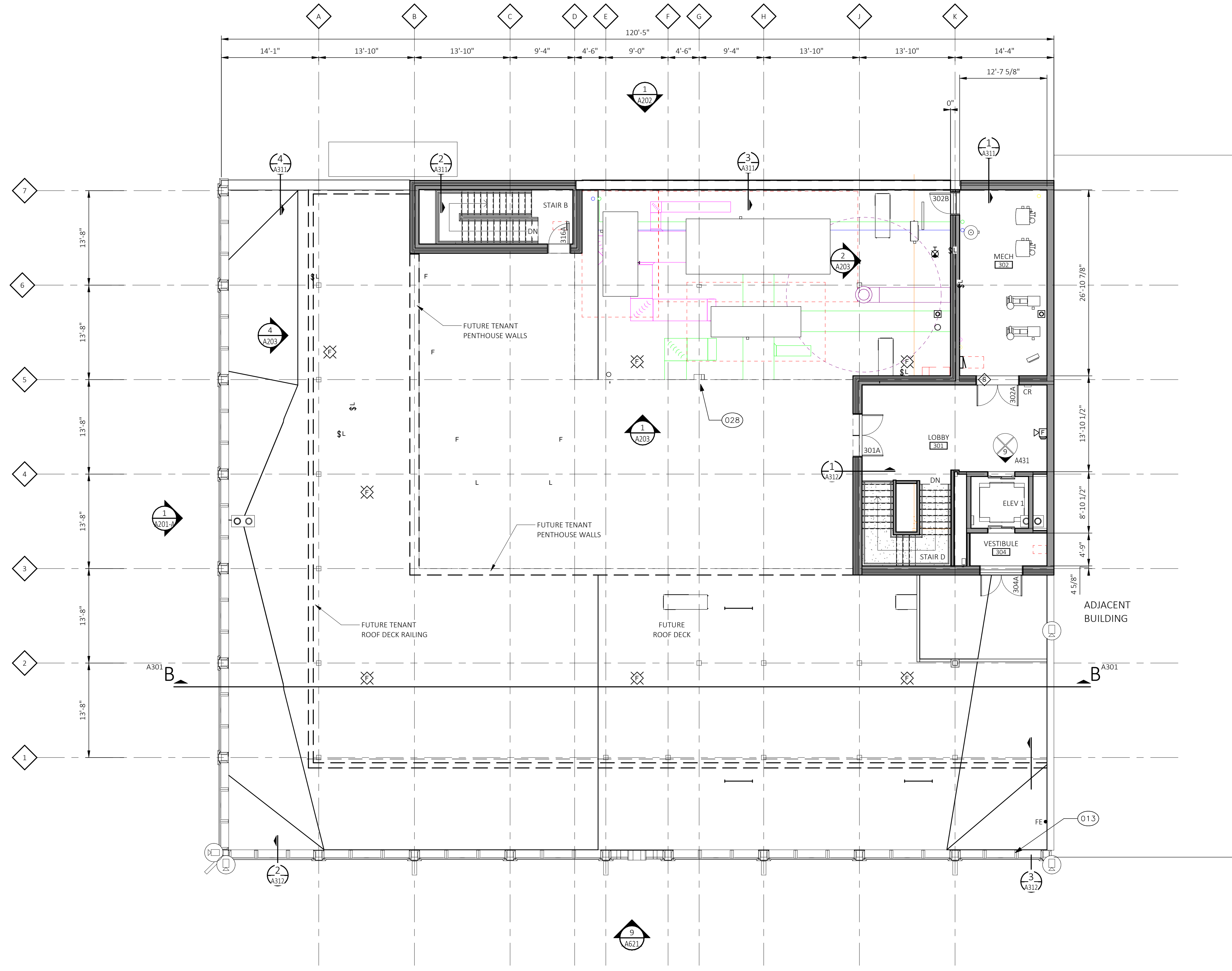
Sheet Title
FIRST FLOOR PLAN

Sheet Number

A101



30 x 42 | PLOTTED ON 5/2/2022 2:46:21 PM | C:\Users\theresa.schorr\Documents\2020043 1201 WASH-KDG-ARCH-V22_theresa.schorr@thekraemerdge.com.rvt



PENTHOUSE FLOOR PLAN
SCALE: 1/8" = 1'-0"

GENERAL NOTES

- A FIRESTOPPING: PROVIDE FIRESTOPPING ASSEMBLIES AT ALL PENETRATIONS AND INTERRUPTIONS TO FIRE RATED ASSEMBLIES WHICH PROVIDE THE SPECIFIED FIRE RATING FOR PARTITION OR FLOOR. SEE SPECIFICATIONS.
- B FIRE RATED PARTITIONS SHALL BE CONTINUOUS FROM FLOOR TO STRUCTURE ABOVE AND SHALL BE FIRE STOPPED TIGHTLY TO STRUCTURE PER CODE (U.L. SYSTEM). SEE PARTITION SCHEDULE/AS01 FOR ADDITIONAL REQUIREMENTS.
- C PARTITIONS ARE DIMENSIONED FROM FINISH FACE TO FINISH FACE, UNLESS NOTED OTHERWISE. MAINTAIN DIMENSIONS MARKED 'CLEAR'. ALLOW FOR THICKNESS OF FINISHES.
- D COORDINATE AND PROVIDE BACKING FOR MILLWORK AND ITEMS ATTACHED OR MOUNTED TO WALLS OR CEILINGS.
- E CONTRACTOR TO PROVIDE BLOCKING AS REQUIRED. COORDINATE LOCATIONS AND EXTENTS OF BLOCKING WITH PRODUCT MANUFACTURERS AND SHOP DRAWINGS.
- F LOCATE DOOR FRAMES 6" FROM INSIDE CORNER TO DOOR OPENING, UNLESS NOTED OTHERWISE.
- G ALL INTERIOR GLAZING INCL. DOORS, SIDELITES, & BORROWED LITES SHALL BE CLEAR LAMINATED SAFETY GLASS OR CLEAR TEMPERED SAFETY GLAZING. UNLESS NOTED OTHERWISE.
- H RECESSED ITEMS (GREATER THAN 16 SQ. IN.) IN RATED AND/OR SMOKE WALLS, INCLUDING ELEC PANELS, ELEC DUCTS, MED GAS VALVE BOXES, FIRE EXT CABINETS, ETC. SHALL BE BACKED WITH 5/8" TYPE 'X' GYPSUM BOARD TO MAINTAIN RATING FIRE WALL.
- I SEMI-RECESSED FIRE EXTINGUISHER (FE) ARE SHOWN ON PLAN - SEE PARTITION SCHEDULE/AS01 FOR TYPICAL DETAILS. FINAL LOCATION OF FIRE EXTINGUISHERS SHALL BE REVIEWED IN FIELD WITH BUILDING OFFICIAL PRIOR TO INSTALLATION ROUGH-IN.
- J COORDINATE TELECOMMUNICATIONS, A/V, DATA AND SECURITY SYSTEMS INSTALLATIONS. PROVIDE AND INSTALL TELEPHONE AND ELECTRICAL PANEL BOARDS, PANEL BOARDS SHALL BE 4' X 8' X 3/4" THICK, PLYWOOD, FIRE RETARDANT TREATED.
- K COORDINATE WITH ROOM FINISH AND MATERIAL SCHEDULE.
- L COORDINATE WITH ENLARGED ROOM PLAN FOR ADDITIONAL REQUIREMENTS.
- M SEE PARTITION SCHEDULE/AS01 FOR ADDITIONAL REQUIREMENTS.

WORK IN EXISTING STRUCTURES

- O WHERE NEW GYPSUM BOARD PARTITIONS ARE A CONTINUATION OF AN EXISTING PARTITION OR COLUMN ENCASEMENT, THE FACE OF THE NEW GYPSUM BOARD SHALL BE ALIGNED WITH THE FACE OF THE EXISTING SURFACE. WHERE A NEW GYPSUM BOARD PARTITION IS SHOWN INTERSECTING A COLUMN ENCASEMENT THE CENTERLINE OF THE WALL SHALL BE CENTERED ON THE COLUMN ENCASEMENT.
- P WHERE NEW OR INFILL PARTITION ABUTS EXISTING PARTITION, FACE OF PARTITIONS SHALL ALIGN, UNLESS NOTED OTHERWISE.
- Q PARTITIONS WITH EXISTING FRAMING MAY REQUIRE REWORK TO ACCOMMODATE NEW OPENINGS, ETC.
- R ALTERNATE PARTITION ASSEMBLIES THAT VARY FROM THE ASSEMBLIES PROVIDED IN THE PARTITION SCHEDULE TO BE SUBMITTED BY THE CONTRACTOR TO THE ARCHITECT FOR CONSIDERATION. ALTERNATE ASSEMBLIES MAY REQUIRE REVIEW BY THE LOCAL JURISDICTION. ANY REVIEW SHALL NOT CONSTITUTE A CLAIM FOR DELAY.
- S WHERE NEW FINISHES ARE SPECIFIED ON THE FINISH PLAN REMOVE ALL EXISTING FINISHES. PATCH AND REPAIR WALLS AND FLOOR TO ENSURE EVEN SURFACE. PREPARE THEM TO ACCEPT NEW SCHEDULED FINISH PER MANUFACTURER'S INSTRUCTIONS. SEE SPECIFICATIONS FOR ADDITIONAL REQUIREMENTS.
- T PROVIDE NEW STRUCTURAL LINTELS AT ALL MASONRY WALLS WHERE PREVIOUS OPENING DOES NOT HAVE A LINTEL AND AT NEW OPENINGS. LINTEL SHALL EXTEND MINIMUM 8" EITHER SIDE OF OPENING, UNLESS NOTED OTHERWISE. SEE STRUCTURAL.
- U PROVIDE TEMPORARY DUSTPROOF PARTITIONS AS REQUIRED TO PROTECT ALL EXISTING AREAS FROM DAMAGE.
- V WHERE SLAB ON GRADE REMOVAL IS REQUIRED FOR UTILITY PLACEMENT REFER TO TYPICAL CONCRETE SLAB INFILL DETAIL ON SHEET A...

CONSTRUCTION KEYNOTES

- 002 OUTLINE OF FLOOR ABOVE
- 003 BARREL VAULT CEILING ABOVE
- 006 DTE TRANSFORMER
- 008 CANOPY ABOVE
- 013 GUARDRAIL BY TENANT
- 017 OUTLINE OF FUTURE ROOF DECK
- 018 AREA OF SUNKEN FLOOR
- 019 INFILL FLOOR AS REQUIRED TO PROVIDE LEVEL SURFACE
- 021 NEW ROOF MEMBRANE - SEE SPECIFICATIONS AND STRUCTURAL
- 023 GUTTER AND DOWNSPOUT
- 028 MECHANICAL EQUIPMENT SCREEN WALL BY FUTURE TENANT
- 029 APPROXIMATE CRAWL SPACE EXTENTS - VIF
- 034 FACE OF NEW WALL TO ALIGN W/EDGE OF EXIST PILASTER.

KraemerDesignGroup
 Detroit, MI | Toledo, OH | Charleston, SC
 1420 Broadway | Detroit, MI 48226 | 313.963.3399 | 313.965.9555
 www.kraemerdg.com

Architect

Consultant

INNOVATIVE PROPERTY PARTNERS LLC
 630 WOODWARD AVE.
 DETROIT, MI

Owner

1201 WASHINGTON BLVD.
 1201 WASHINGTON BLVD.
 DETROIT, MI

Project

PRELIMINARY NOT FOR CONSTRUCTION

Seal

THIS DOCUMENT AND THE IDEAS AND DESIGNS INCORPORATED HEREIN, AS AN INSTRUMENT OF PROFESSIONAL SERVICE ARE THE PROPERTY OF KRAEMER DESIGN GROUP, LLC AND ARE NOT TO BE USED IN WHOLE OR IN PART FOR ANY REASON WITHOUT THE WRITTEN AUTHORIZATION OF KRAEMER DESIGN GROUP, LLC.

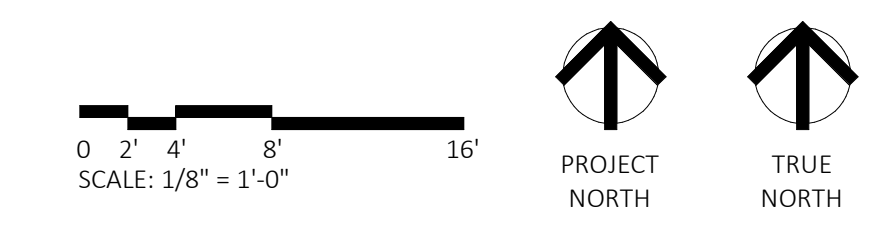
©COPYRIGHT 2022 KRAEMER DESIGN GROUP, LLC

HDC SUBMISSION	05-02-22
Revision	Date
Date	
Project Number	2020043

Sheet Title
PENTHOUSE FLOOR PLAN

Sheet Number

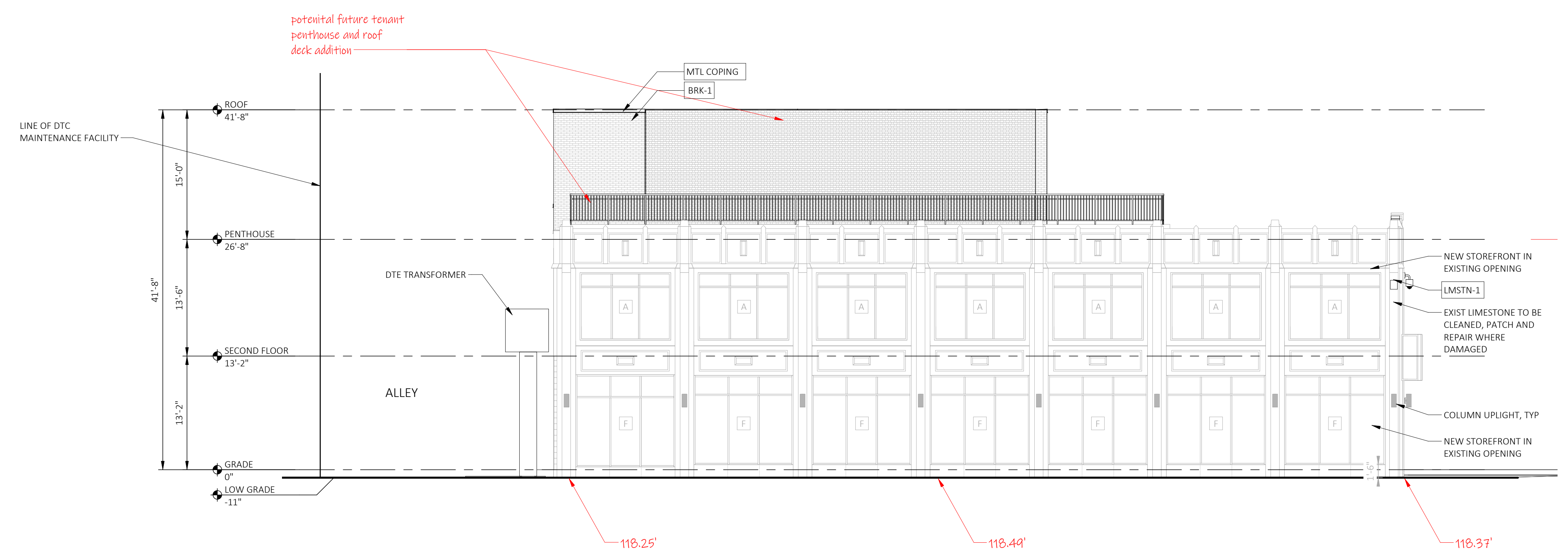
A103



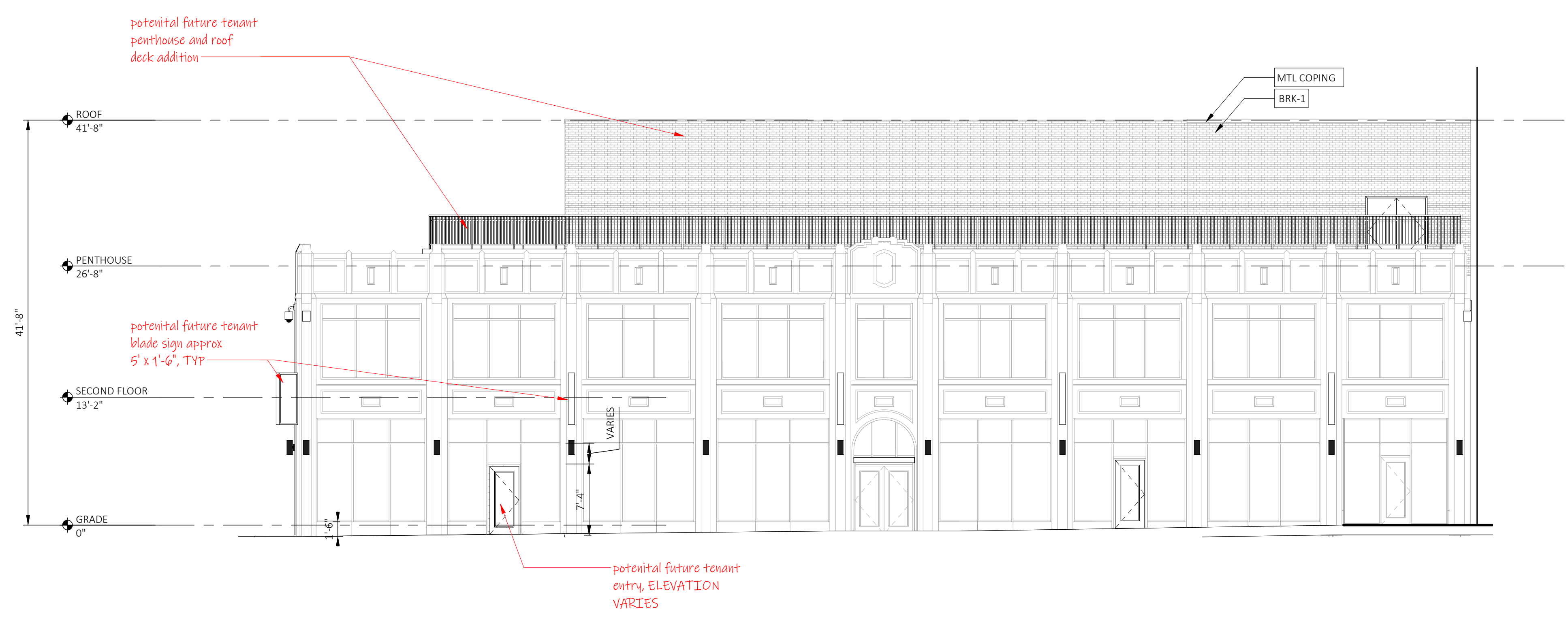
30 x 42 | PLOTTED ON 5/2/2022 3:04:23 PM | C:\Users\theresa.schorr\Documents\2020043 1201 WASH KDG-ARCH v22_theresa.schorr@thekraemeredge.com.rvt

E D C B A

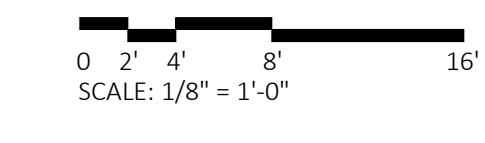
1
2
3
4
5



2 SOUTH ELEVATION FUTURE
A201-B SCALE: 1/8" = 1'-0"



1 EAST ELEVATION FUTURE
A201-B SCALE: 1/8" = 1'-0"



KraemerDesignGroup
 Detroit, MI | Toledo, OH | Charleston, SC
 1420 Broadway | Detroit, MI 48226 | 313.963.3399 | 313.965.9555
 www.kraemerdesigngroup.com

Architect

Consultant

**INNOVATIVE
 PROPERTY
 PARTNERS LLC**
 630 WOODWARD AVE.
 DETROIT, MI

Owner

1201 WASHINGTON BLVD.
 1201 WASHINGTON BLVD.
 DETROIT, MI

Project

**PRELIMINARY
 NOT FOR
 CONSTRUCTION**

Seal

THIS DOCUMENT AND THE IDEAS AND DESIGNS INCORPORATED HEREIN, AS AN INSTRUMENT OF PROFESSIONAL SERVICE ARE THE PROPERTY OF KRAEMER DESIGN GROUP, LLC AND ARE NOT TO BE USED IN WHOLE OR IN PART FOR ANY REASON WITHOUT THE WRITTEN AUTHORIZATION OF KRAEMER DESIGN GROUP, LLC.

©COPYRIGHT 2022 KRAEMER DESIGN GROUP, LLC

HDC SUBMISSION 05-02-22

Revision _____ Date _____

Date _____

Project Number 2020043

Sheet Title
**EXTERIOR
 ELEVATIONS**

Sheet Number

A201-B



FUTURE TENANT
SIGNAGE

POTENTIAL
FUTURE TENANT
ENTRY

POTENTIAL
FUTURE TENANT
ENTRY

VIEW ACROSS WASHINGTON
POTENTIAL FUTURE TENANT ADDITIONS





VIEW DOWN ALLEY



POTENTIAL FUTURE
ROOFTOP ADDITION

FUTURE TENANT
SIGNAGE

POTENTIAL
FUTURE TENANT
ENTRY

POTENTIAL
FUTURE TENANT
ENTRY



VIEW AT STATE AND WASHINGTON
POTENTIAL FUTURE TENANT ADDITIONS



POTENTIAL FUTURE
ROOFTOP ADDITION



FUTURE TENANT
SIGNAGE

VIEW ACROSS STATE STREET
POTENTIAL FUTURE TENANT ADDITION

