

UNIT	CLOSED CIRCUIT COOLER	
MODEL #	LRWB 5-2H6-Z	SCALE NTS

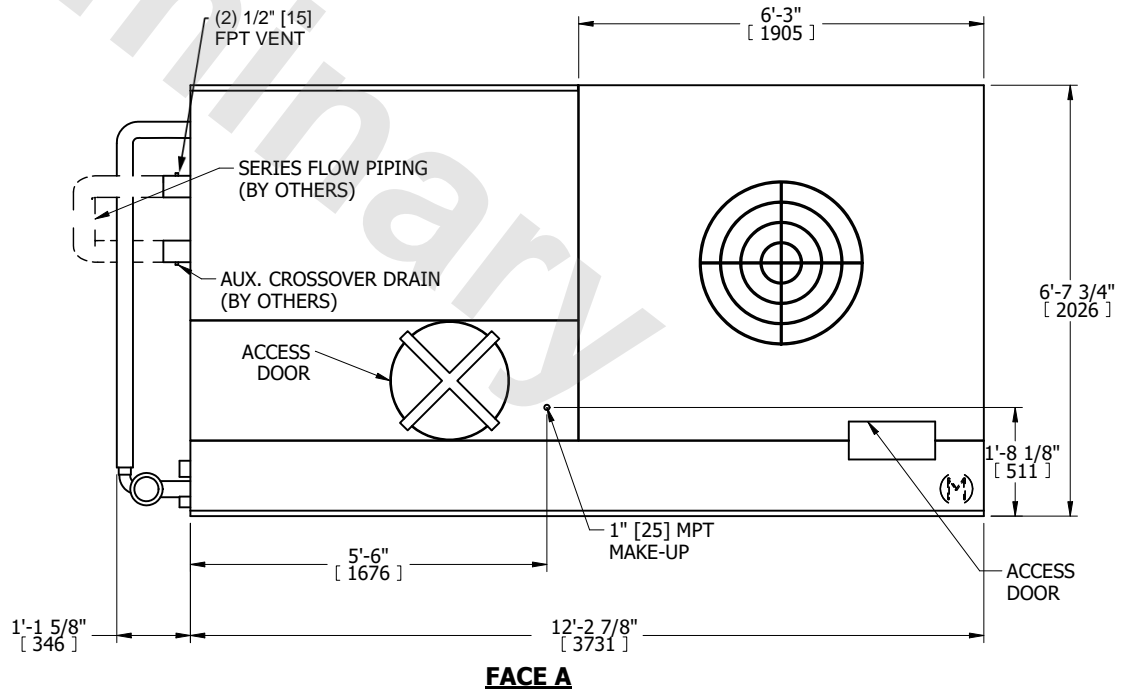
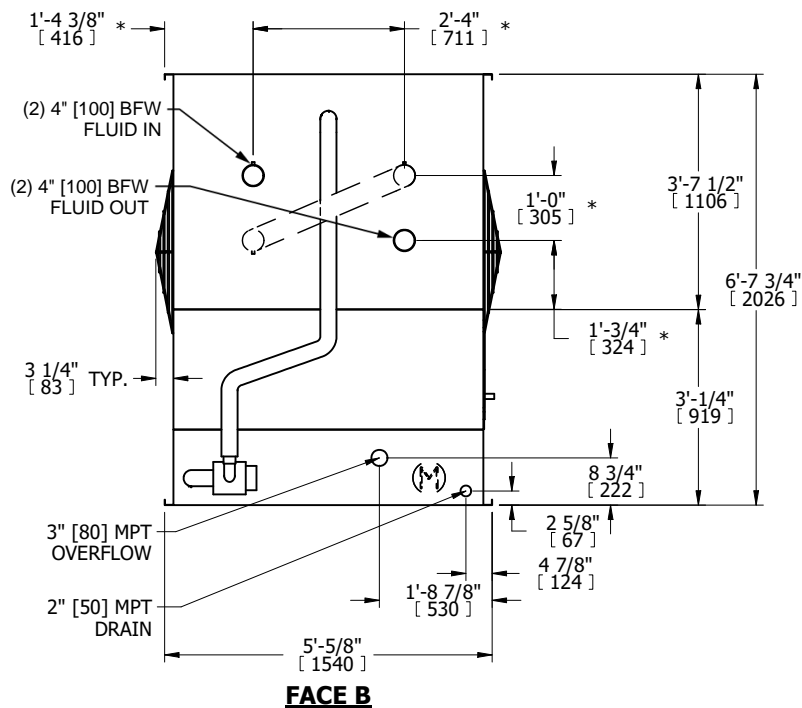
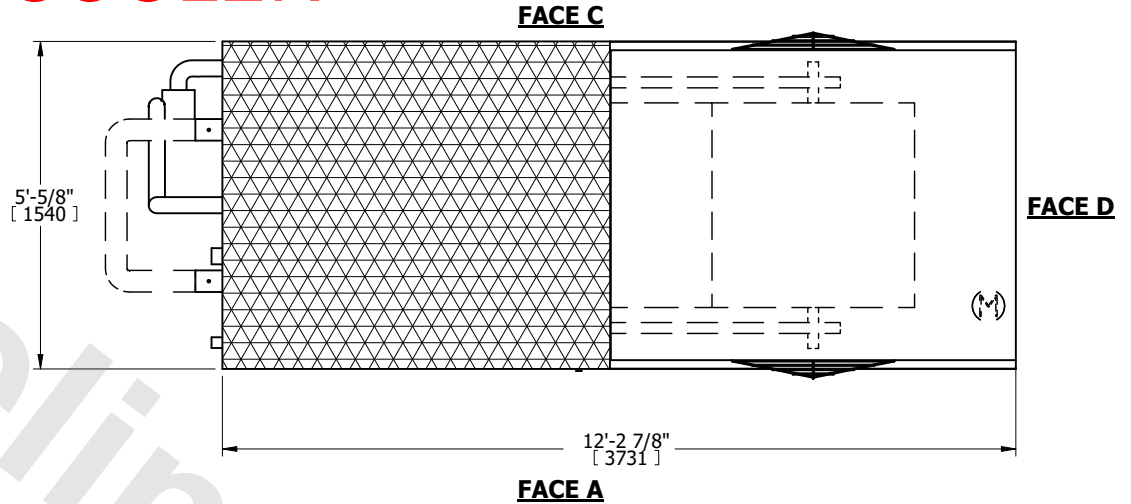
DWG. #	WV050604-DRD-SF	REV.	-
SERIAL #		DATE	4/5/2022

FLUID COOLER

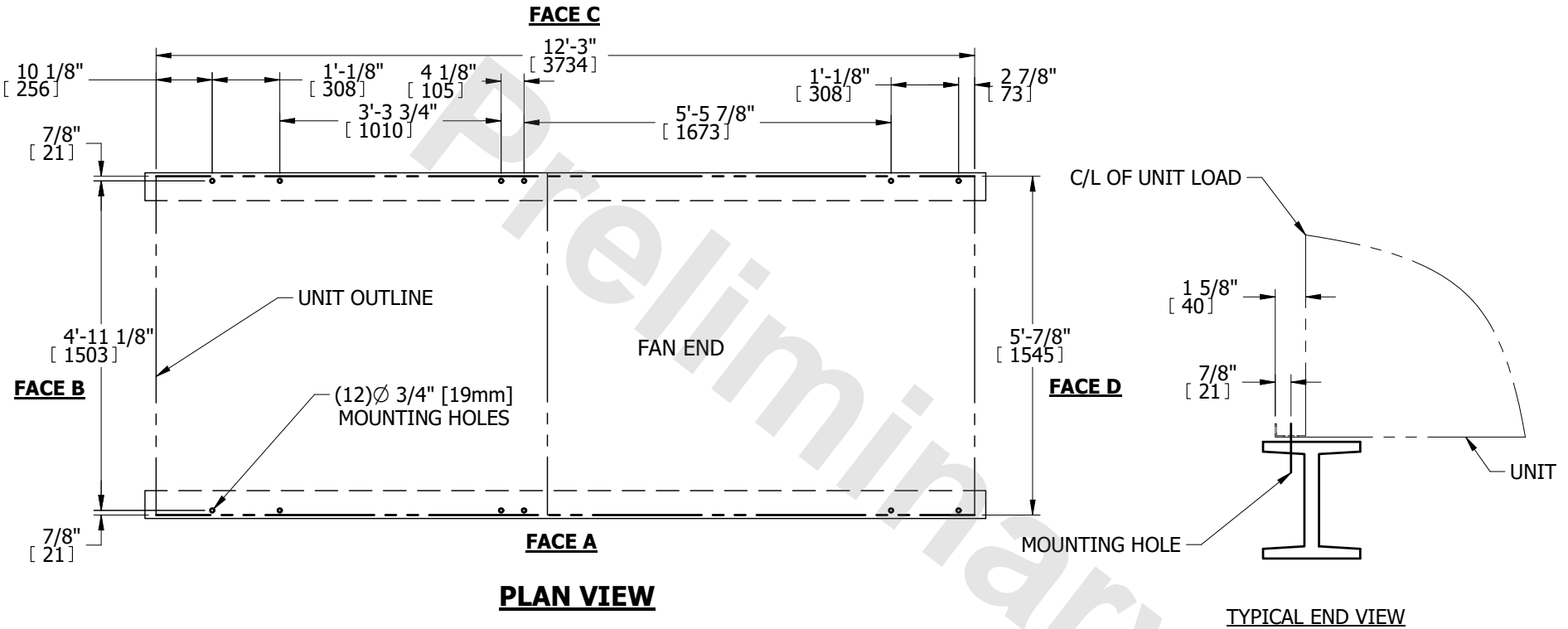
NOTES:

1. (M)- FAN MOTOR LOCATION
2. MPT DENOTES MALE PIPE THREAD
FPT DENOTES FEMALE PIPE THREAD
BFW DENOTES BEVELED FOR WELDING
GVD DENOTES GROOVED
FLG DENOTES FLANGE
PE DENOTES PLAIN END
3. +UNIT WEIGHT DOES NOT INCLUDE ACCESSORIES (SEE ACCESSORY DRAWINGS)
4. 3/4" [19mm] DIA. MOUNTING HOLES. REFER TO RECOMMENDED STEEL SUPPORT DRAWING
5. DIMENSIONS LISTED AS FOLLOWS: ENGLISH FT IN [METRIC] [mm]
6. * - APPROXIMATE DIMENSIONS DO NOT USE FOR PRE-FABRICATION OF CONNECTING PIPING.
7. MAKE-UP WATER PRESSURE
20 psi [137 kPa] MIN, 50 psi [344 kPa] MAX
8. SERIES FLOW PIPING AND AUX. CROSSOVER DRAIN ARE BY OTHERS

**FACE B
PLAN VIEW**

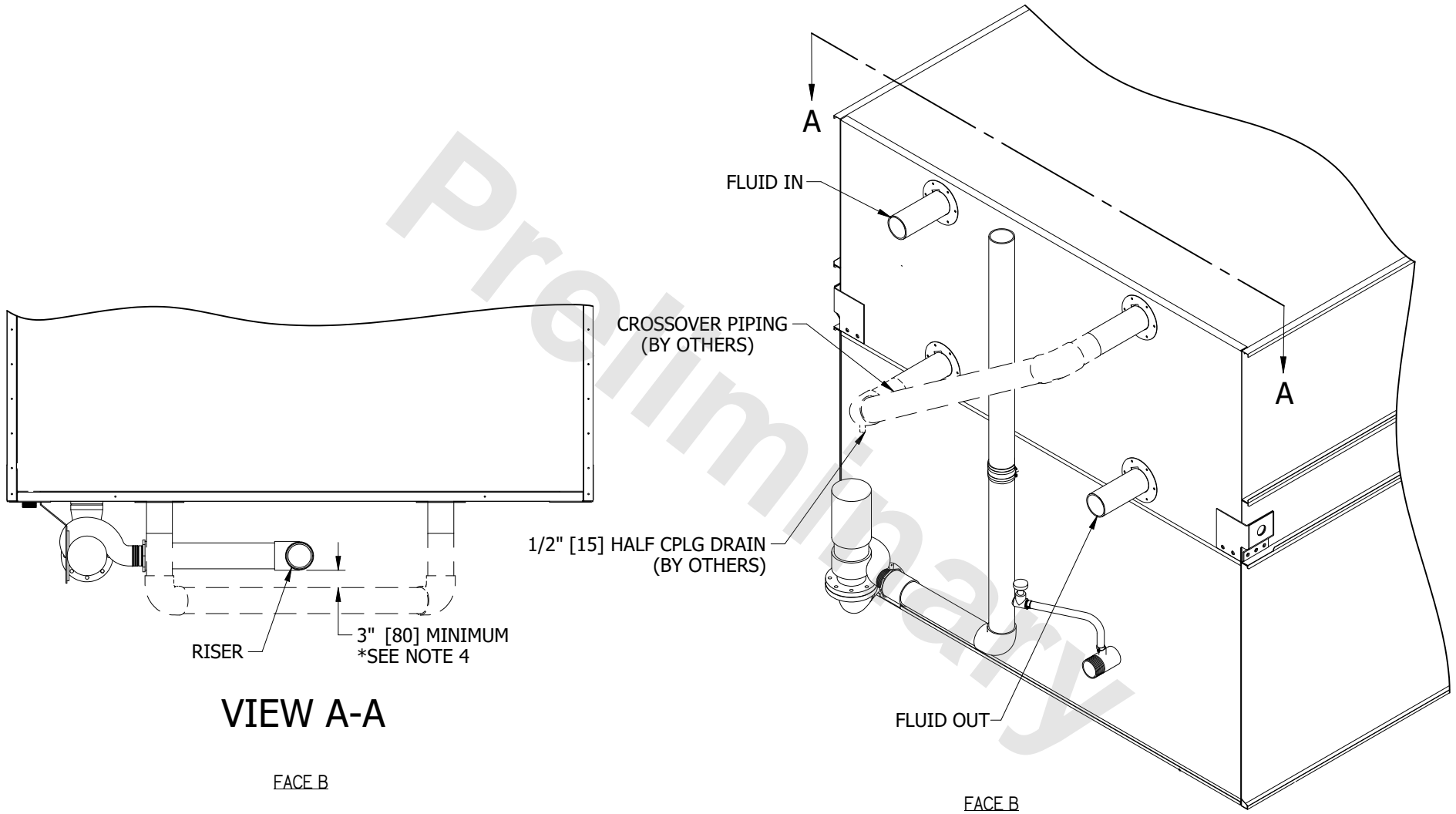


SHIPPING WEIGHT	3340 lbs+ [1515] kg+	OPERATING WEIGHT	5460 lbs+ [2480] kg+	HEAVIEST SECTION WEIGHT	3340 lbs+ [1515] kg+	NO. OF SHIPPING SECTIONS	1	DRAWN BY:	
-----------------	----------------------	------------------	----------------------	-------------------------	----------------------	--------------------------	---	-----------	--



NOTES:

1. BEAMS SHOULD BE SIZED IN ACCORDANCE WITH ACCEPTED STRUCTURAL PRACTICES. MAXIMUM DEFLECTION OF BEAM UNDER UNIT TO BE 1/360 OF UNIT LENGTH NOT TO EXCEED 1/2" [13mm].
2. DEFLECTION MAY BE CALCULATED BY USING 55% OF THE OPERATING WEIGHT AS A UNIFORM LOAD ON EACH BEAM. SEE CERTIFIED PRINT FOR OPERATING WEIGHT.
3. SUPPORT BEAMS AND ANCHOR HARDWARE ARE TO BE FURNISHED BY OTHERS. ANCHOR HARDWARE TO BE ASTM - A325 5/8" [16mm] BOLT OR EQUIVALENT.
4. BEAMS MUST BE LOCATED UNDER THE FULL LENGTH OF THE PAN SECTION.
5. SUPPORTING BEAM SURFACE MUST BE LEVEL. DO NOT LEVEL THE UNIT BY PLACING SHIMS BETWEEN THE UNIT MOUNTING FLANGE AND THE SUPPORTING BEAM.
6. THE FACTORY RECOMMENDED STEEL SUPPORT CONFIGURATION IS SHOWN. CONSULT THE FACTORY FOR ALTERNATE SUPPORT CONFIGURATIONS.
7. UNIT SHOULD BE POSITIONED ON STEEL SUCH THAT THE ANCHORING HARDWARE FULLY PENETRATES THE BEAM'S FLANGE AND CLEARS THE BEAM'S WEB.
8. DIMENSIONS LISTED AS FOLLOWS: ENGLISH FT-IN [METRIC] [mm]



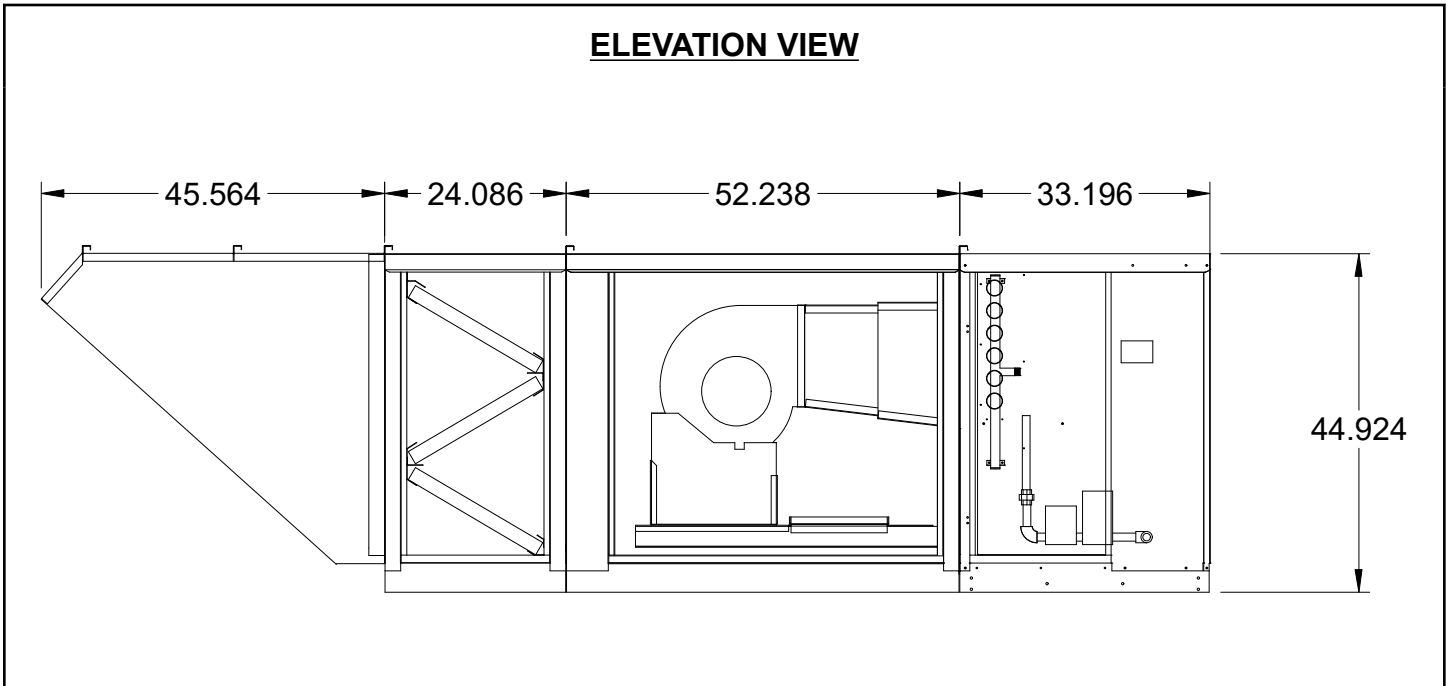
NOTES:

1. THIS DRAWING IS INTENDED TO PROVIDE CROSSOVER GUIDELINES ONLY.
2. FOR PIPE MATERIAL, REFERENCE BID SPECIFICATIONS.
3. REFERENCE CERTIFIED PRINT FOR COIL CONNECTION DIAMETER AND TYPE.
4. PUMP PIPING NOT INCLUDED IN REMOTE SUMP APPLICATIONS. CROSSOVER PIPING SHOULD BE INSTALLED WITH ADEQUATE CLEARANCE FROM OTHER PIPING, AS SHOWN.

5. DIMENSIONS LISTED AS FOLLOWS: ENGLISH FT-IN
 [METRIC] [mm]

MAKE-UP AIR UNIT

ELEVATION VIEW



Notes - Elevation View

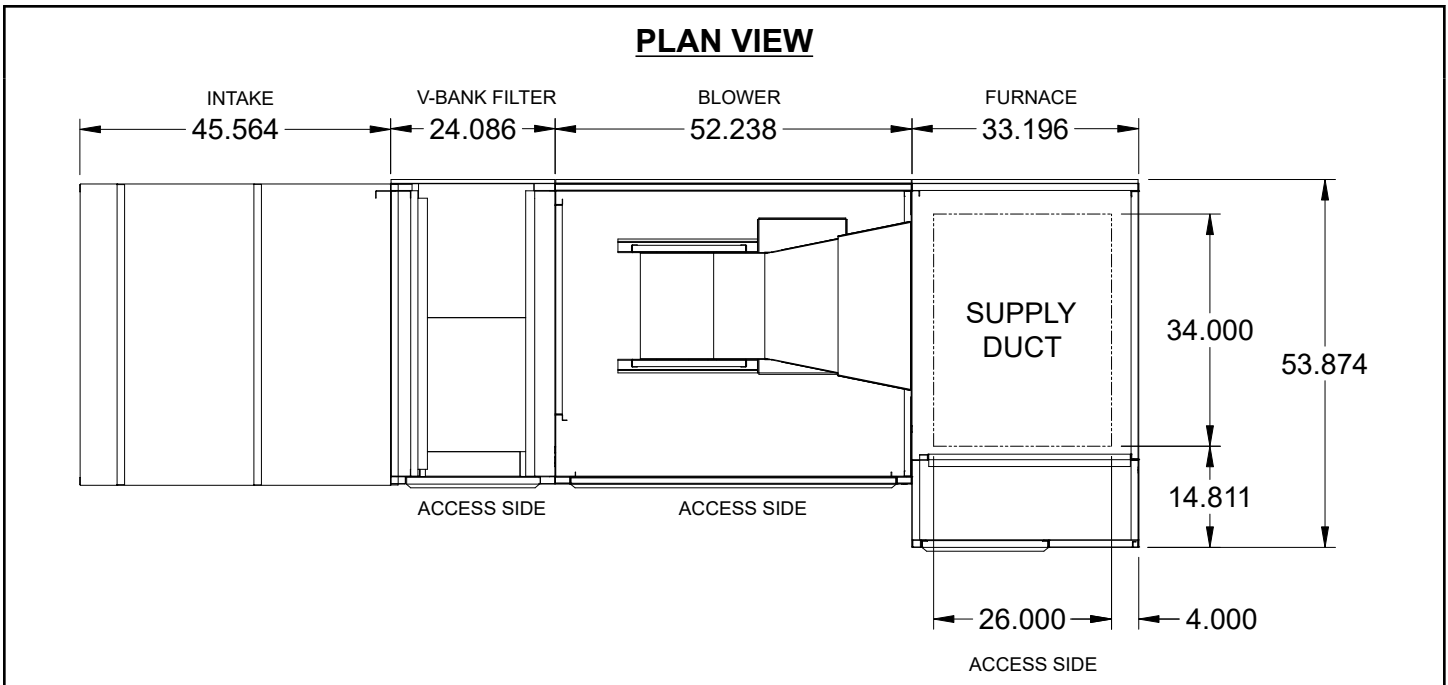
Standard configuration for unit access is on the right-hand side, when looking into the unit intake in the direction of airflow.

Order of unit sections is from intake of unit to discharge of unit.

Sections included on this unit: Weatherhood Section, Filter Section, Blower Section, Furnace 1 Section

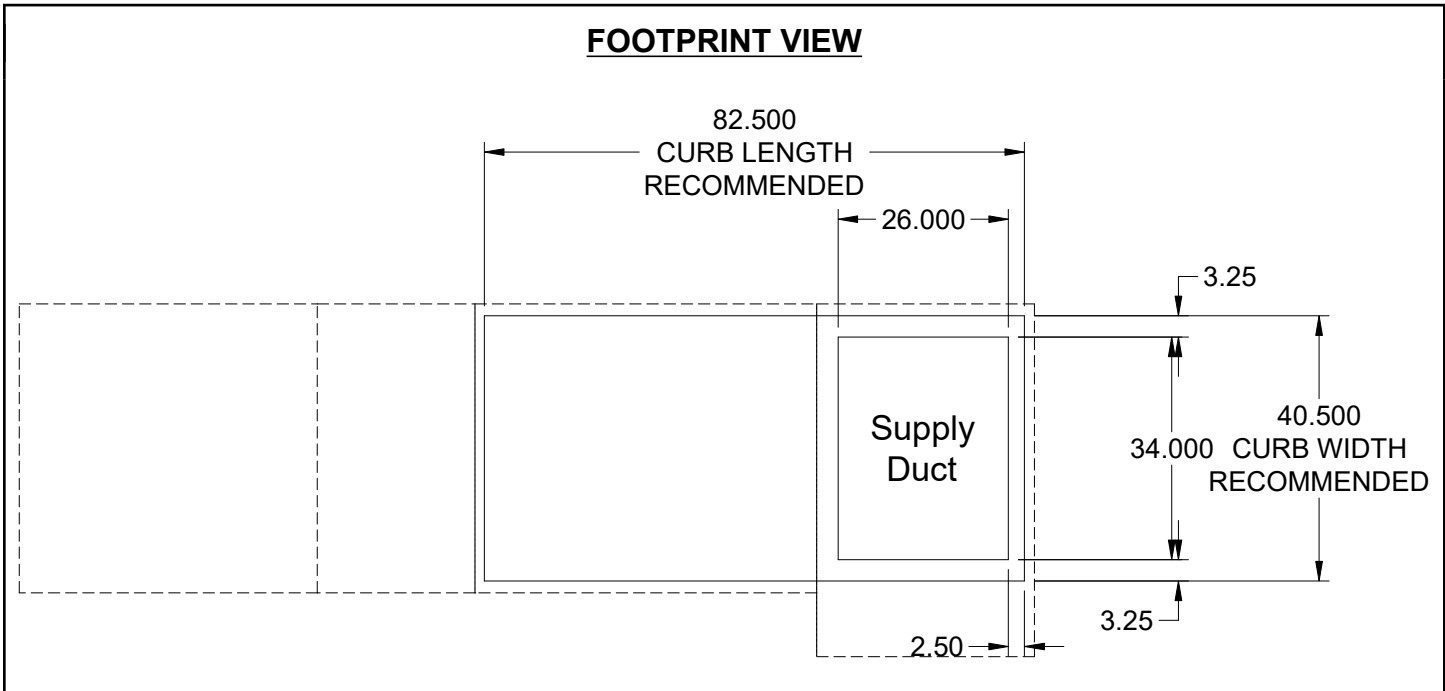
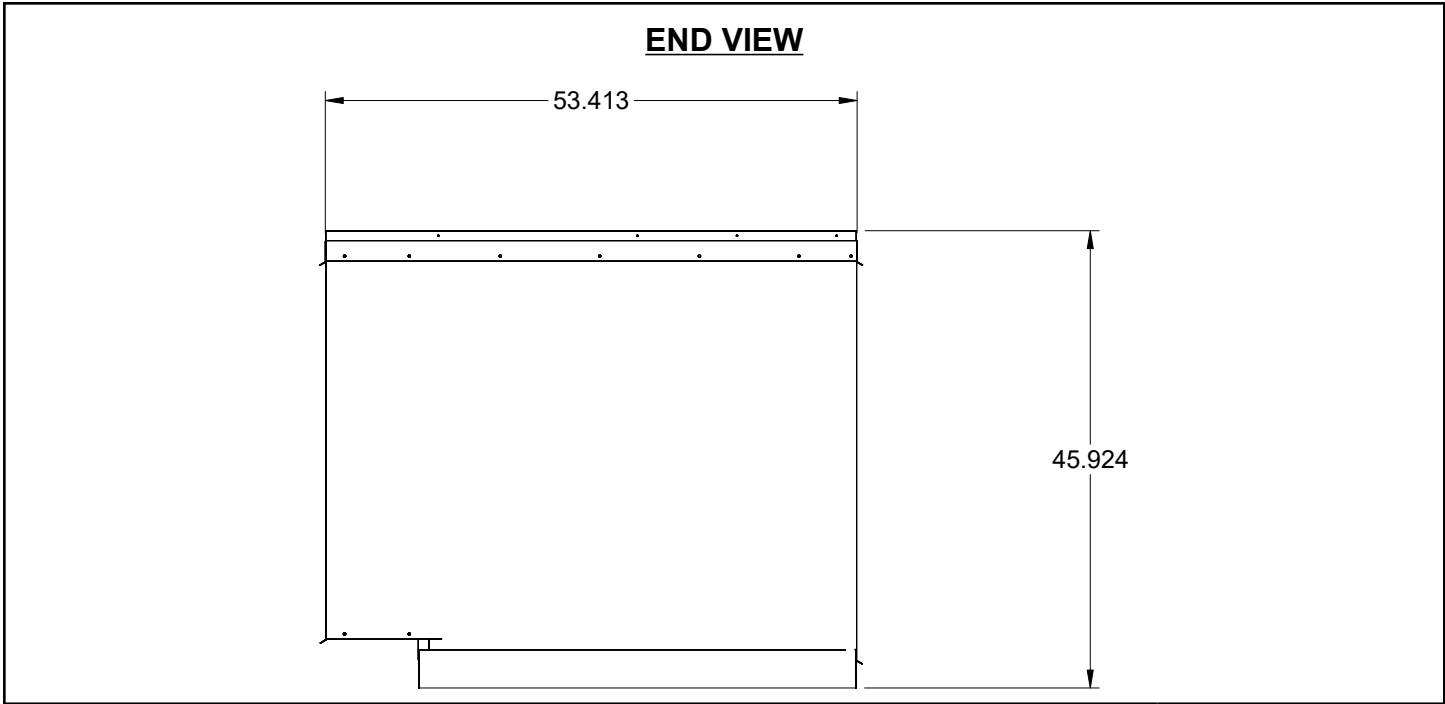
Insulation: Double Wall, from Furnace Section through end of unit.

PLAN VIEW



Notes - Plan View

Standard configuration for unit access is on the right-hand side, when looking into the unit intake in the direction of airflow.

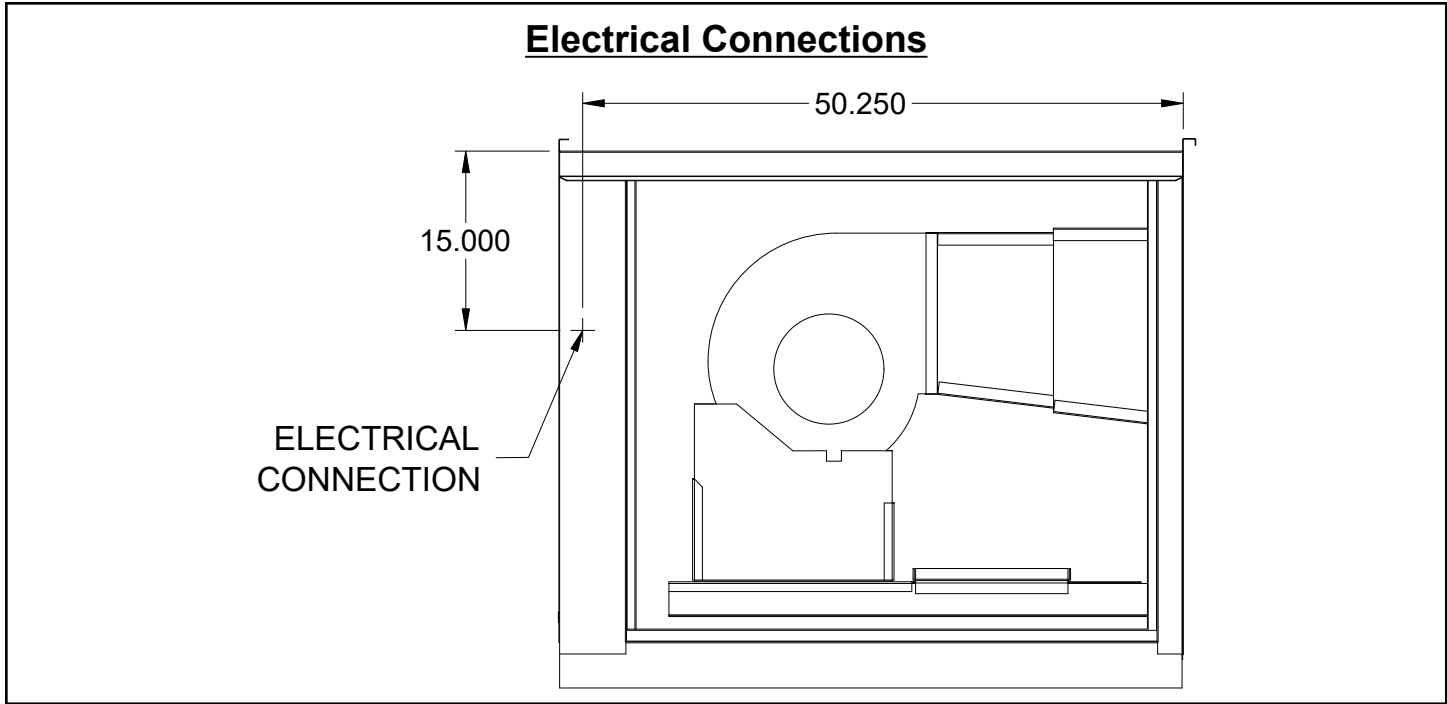


Notes - Footprint View

Minimum Roof Opening: The minimum roof opening size is the illustrated duct diameter plus 0.25 in. on all sides. For example: If the duct size is 14 x 14 in. square, the minimum roof opening size is 14.5 x 14.5 in. square.

Maximum Roof Opening: There must be a minimum perimeter of 1.75 in. between the roof opening and the roof curb. For example: If the roof curb is 75 x 30 in. square, the maximum roof opening is 71.5 x 26.5 in. inches square.

The weatherhood and filter sections of the make-up air unit extend beyond the curb. This is by design, to prevent water infiltration.



Disconnect Switch

Enclosure Rating: NEMA-1

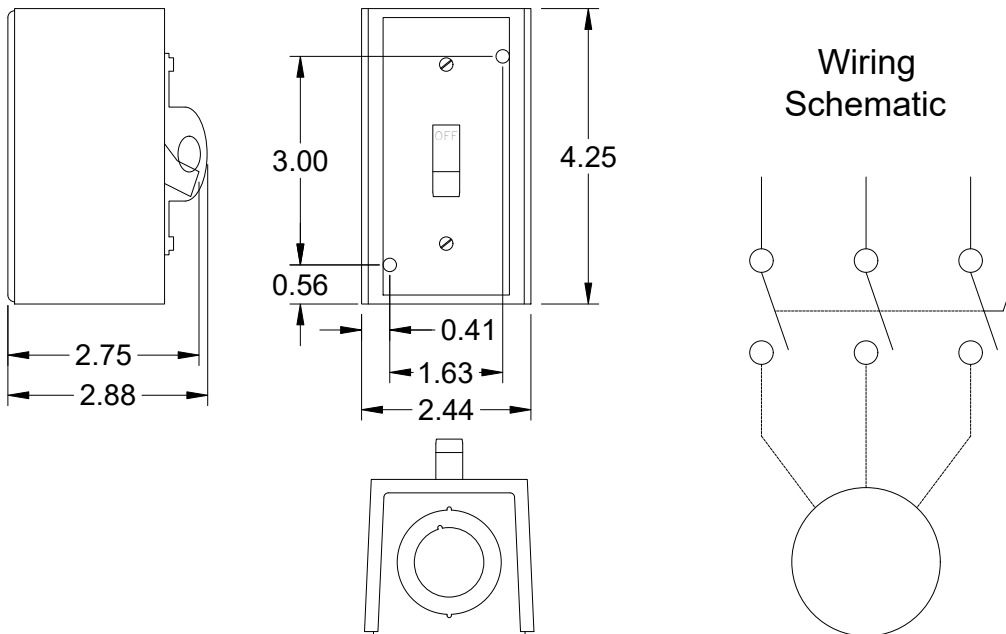
Standard Construction Features:

Enclosure constructed for indoor use to provide a degree of protection to personnel against incidental contact with the enclosed equipment and to provide a degree of protection against falling dust. This enclosure meets the rod entry and the indoor corrosion protection design tests. The rod entry test is intended to simulate incidental contact with enclosure equipment. Enclosure is equipped with provision to lockout in the off position with customer supplied lock.

Disconnect Switch Configuration

Type:	Toggle	Motor Size:	2 hp	Voltage:	208	UL Listed:	Yes
Manufacturer:	Square D	Cycle:	60	Amperage:	30	CSA Approved:	Yes
Overload Protection:	None	Phase:	3	Switch Pole(s):	3	Rating:	10 hp
Junction Box Mtg.:	Mounted and Wired	RPM:	1725	Exp. Resist. Wiring:	None		
Switch Mounting:	Shipped With Unit						

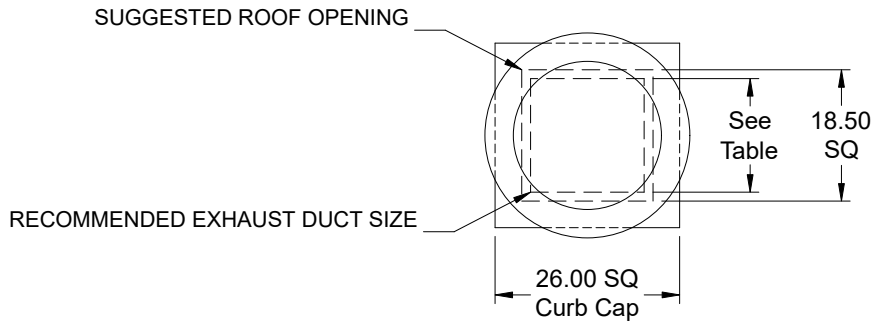
Electrical Drawing Details



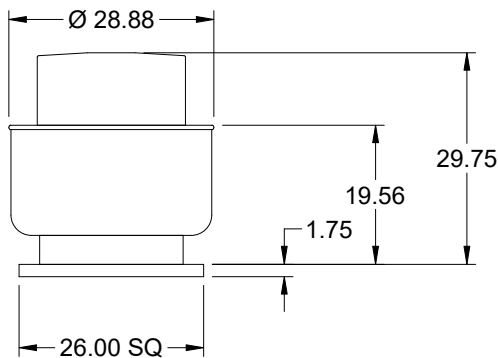
Notes: All dimensions shown are in units of in.

Assembly Drawing

Type: Direct Drive Upblast Centrifugal Roof Exhaust Fan



DUCT TYPE	SIZE
STANDARD	16 SQ
FIRE-WRAPPED	8 SQ



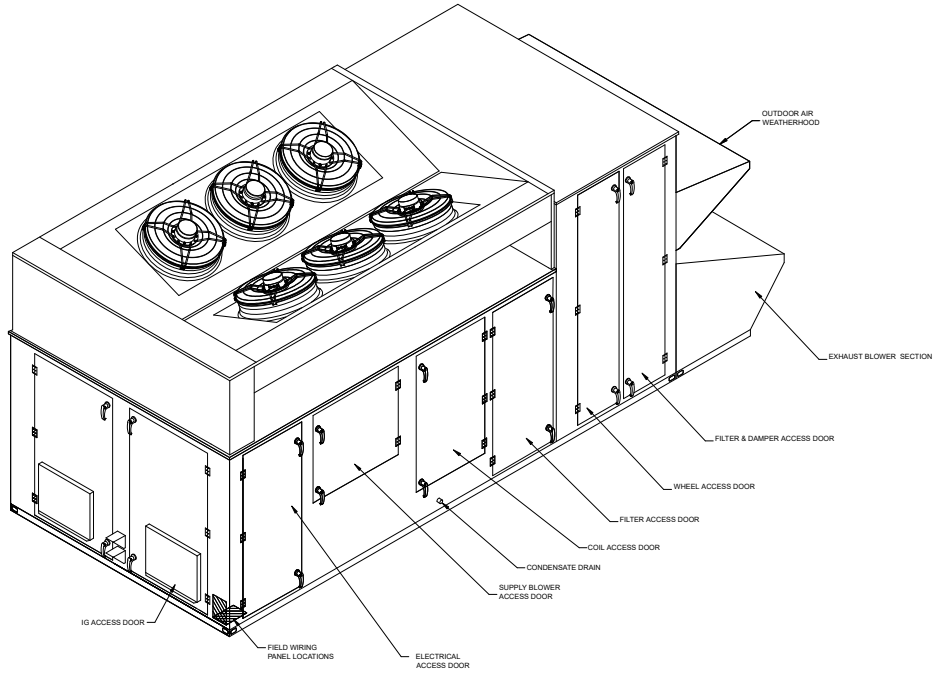
DUCT DIMENSIONS ARE LARGEST POSSIBLE DUCT TO FIT THROUGH CURB.
CONSULT SYSTEM DESIGN ENGINEER FOR RECOMMENDED DUCT SIZE.

OVERALL HEIGHT MAY BE GREATER DEPENDING ON MOTOR, ADAPTER, AND/OR
HINGE BASE.

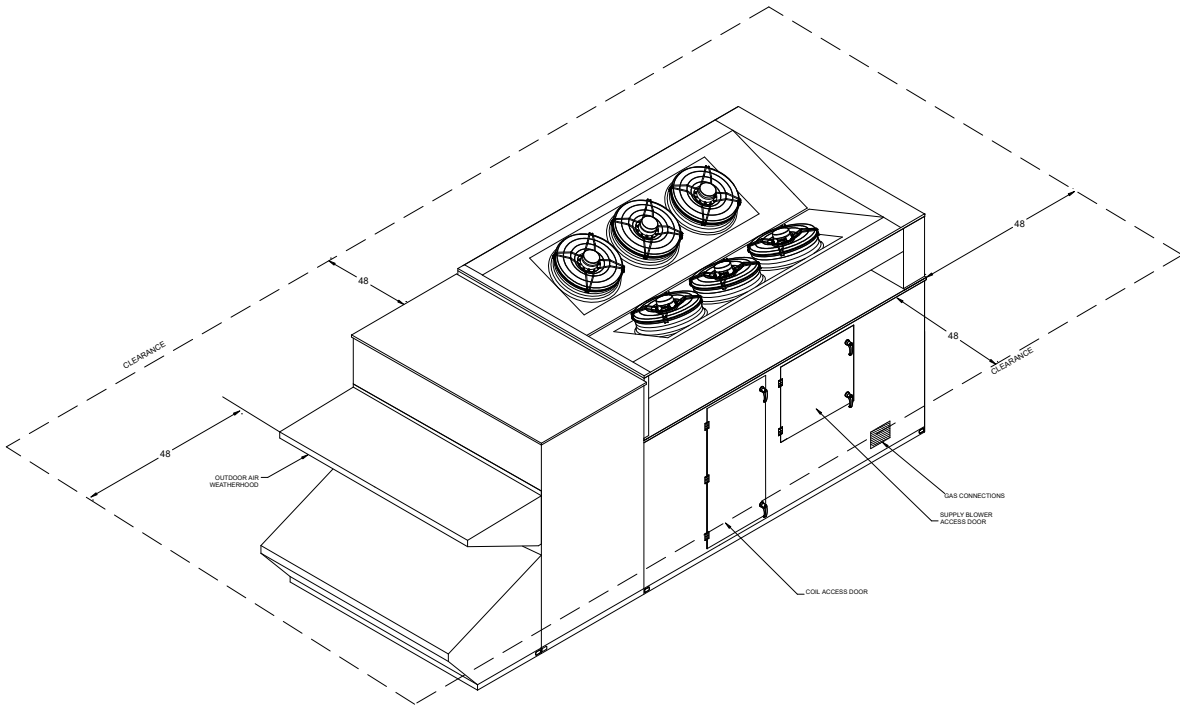
Notes: All dimensions shown are in units of in..

ERV

Isometric Drawings

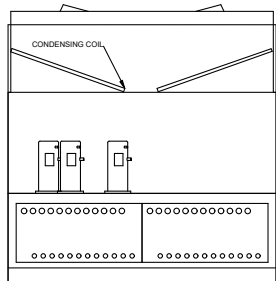
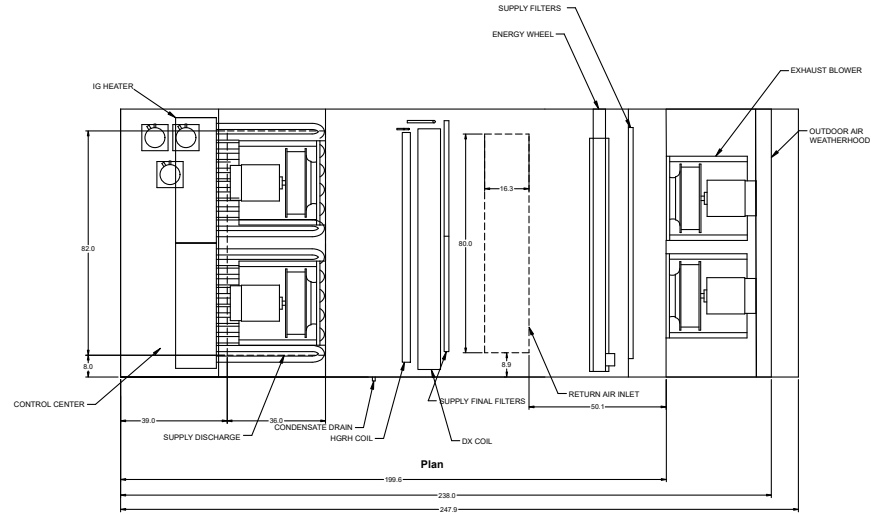


Back Right Isometric

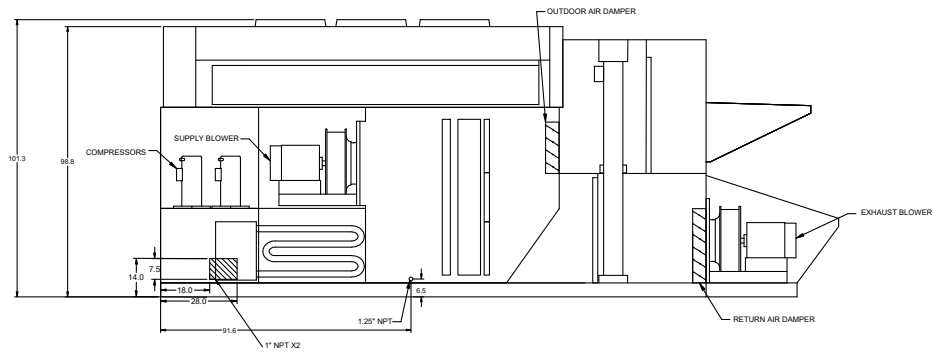


Front Left Isometric

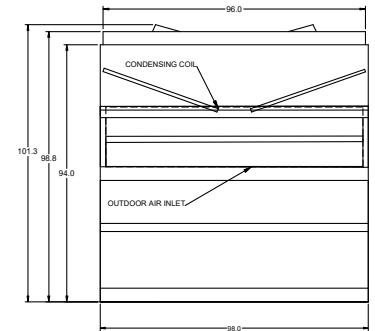
Overview Drawings



Left End



Elevation



Right End