



Outdoor Shelters

2555, 2508-2484 Burns

Detroit Historic District Commission

May 11, 2022

DETROIT WALDORF SCHOOL

FREE THINKING
SINCE 1966

History of Detroit Waldorf School Building

- Located in historic Indian Village
- Designed by architect Albert Kahn
- Built in 1913, expanded in 1923
- Occupied first by The Liggett School
- Acquired by Detroit Waldorf School in 1965
- Last standing Albert Kahn-designed school in world



Need and Inspiration

- Covid-19 and need to continue in-person learning
- Fresh air classrooms created during the 1918 pandemic
- Historic precedents:

www.nytimes.com/2020/07/17/nyregion/coronavirus-nyc-schools-reopening-outdoors.html

www.washingtonpost.com/history/2020/09/14/open-air-schools-outdoor-coronavirus/

www.smithsonianmag.com/history/history-outdoor-schooling-180975696/

www.history.com/news/school-outside-tuberculosis



Outdoor Classroom Campus Planning



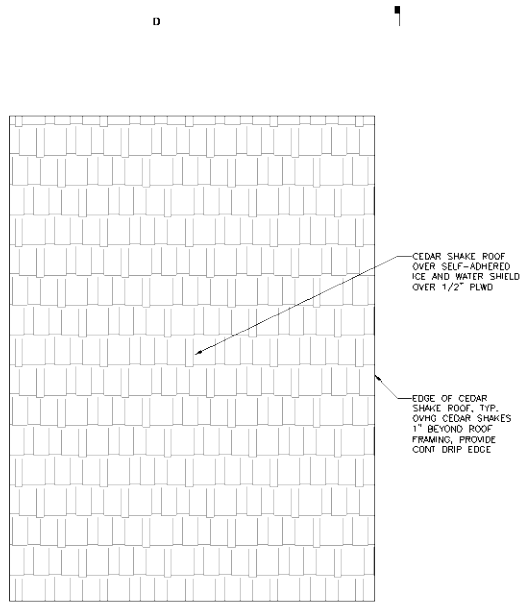
CHARLEVOIX ST



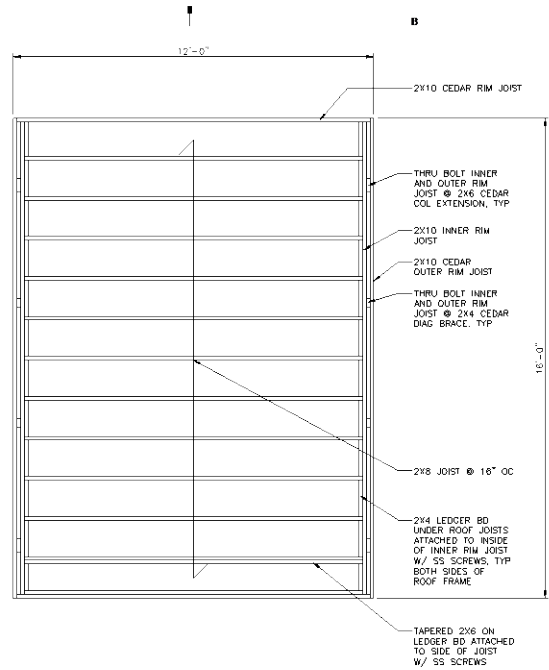
Outdoor Classroom Structures

- 14 cedar shelters (12 within Indian Village and 2 outside the district)
- Simple shed structure open on 3 sides with teaching wall
- Donation funded and volunteer constructed
- Granted a Notice to Proceed on a temporary basis in 2020

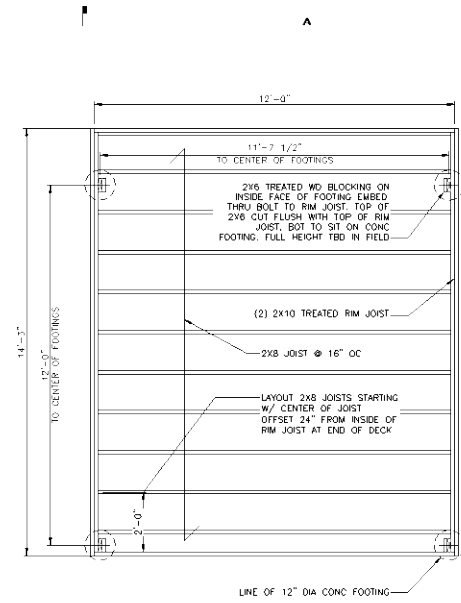




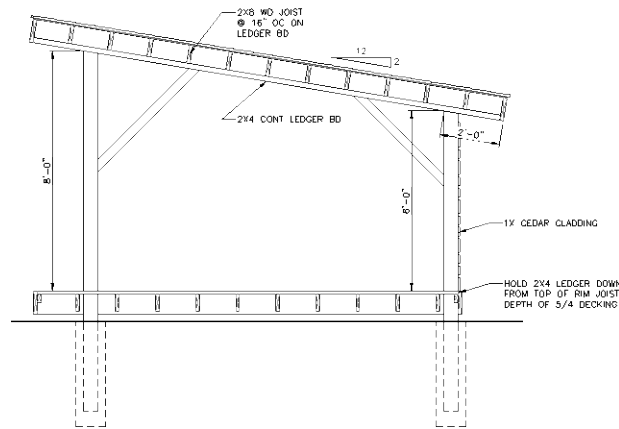
ROOF PLAN
SCALE: 1/2"=1'-0"



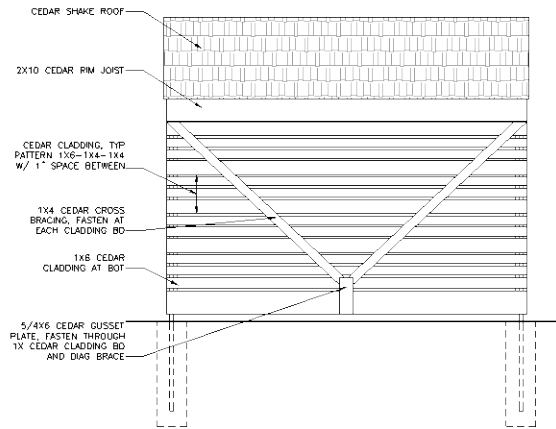
ROOF FRAMING PLAN
SCALE: 1/2"=1'-0"



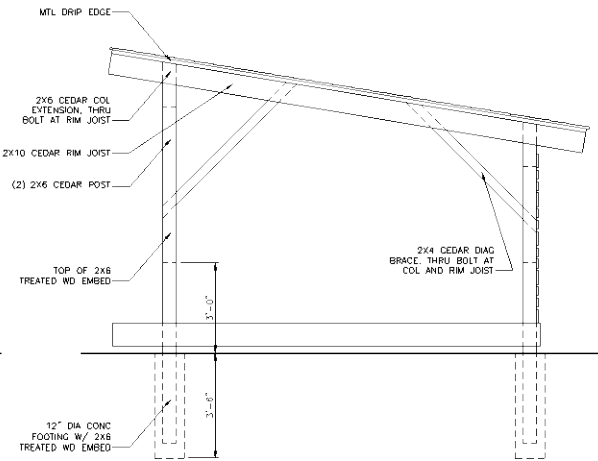
FLOOR FRAMING PLAN
SCALE: 1/2"=1'-0"



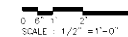
SHELTER SECTION
SCALE: 1/2"=1'-0"



REAR ELEVATION
SCALE: 1/2"=1'-0"



SIDE ELEVATION
SCALE: 1/2"=1'-0"



KraemerDesignGroup
1400 University Drive • Detroit, MI 48203 • (313) 962-2999 • (313) 962-9955
www.kraemerdsgroup.com

Architect

Consultant

DETROIT WALDORF
2555 BURTON
DETROIT, MI

Project / Owner



Scale

FOR PERMIT 09/04/20
Revision Date

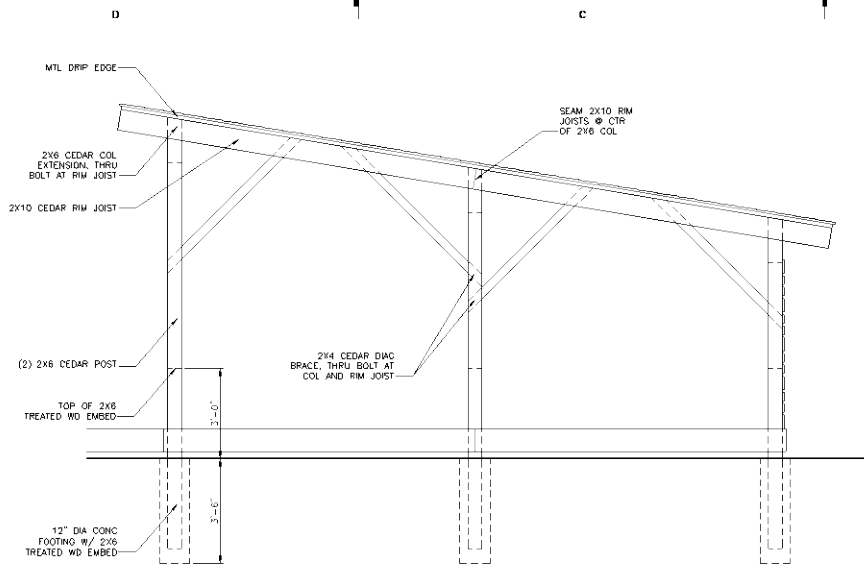
Date

Sheet Title
**12X12 SHELTER
PLANS, ELEV AND
SECTION**

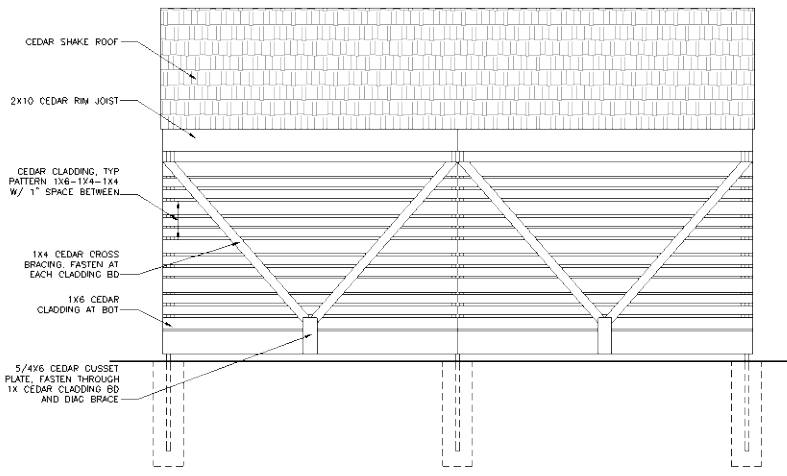
Sheet Number

A1

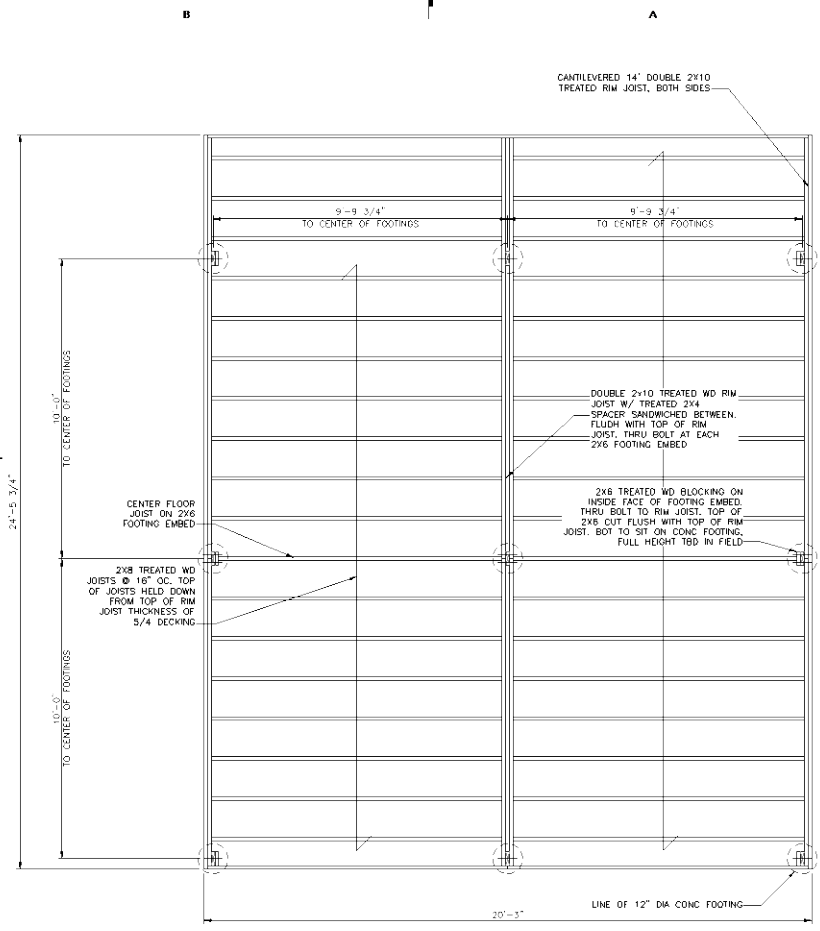
PLOTTED ON 9/17/2020 9:21 AM | PLOTTED BY BRYAN KESNICK



SIDE ELEVATION
SCALE: 1/2"=1'-0"



REAR ELEVATION
SCALE: 1/2"=1'-0"



FLOOR FRAMING PLAN
SCALE: 1/2"=1'-0"

PLOTTED ON 9/17/2020 9:22 AM | PLOTTED BY BRYAN KESNICK

KraemerDesignGroup
 1400 Waverly | Detroit MI 48201 | 313.962.2999 | 313.962.9555
 www.kraemerdsg.com

Architect

Consultant

DETROIT WALDORF
 2445 BLVD
 DETROIT, MI

Project / Owner

Scale: *B. Kesnick*

THIS DOCUMENT AND THE DESIGN INFORMATION CONTAINED HEREIN ARE THE PROPERTY OF KRAEMER DESIGN GROUP, LLC. NO PART OF THIS DOCUMENT SHALL BE REPRODUCED OR TRANSMITTED IN ANY FORM OR BY ANY MEANS, ELECTRONIC OR MECHANICAL, INCLUDING PHOTOCOPYING, RECORDING, OR BY ANY INFORMATION STORAGE AND RETRIEVAL SYSTEM, WITHOUT THE WRITTEN PERMISSION OF KRAEMER DESIGN GROUP, LLC.

FOR PERMIT	09/04/20
Revision	Date
Date	

Sheet Title:
**20X20 SHELTER
 PLANS AND ELEVATIONS**

Sheet Number

A2

SCALE: 1/2"=1'-0"

Breaking Ground

- Constructed in Summer 2020 by school and community volunteers



6 weeks of work...



*...successfully finished
by opening day, fall 2020*



*...and in service,
in all weather
conditions
(January 2021)*





*Honeybee
Pre-K*

*Current
conditions,
May 2022*



*Moon
Pre-K*



*Sunflower
Pre-K*



*Bluebird
Pre-K*



Rainbow Kindergarten



*Sunrise
Kindergarten*



First Grade



Second Grade



Third Grade



Fourth Grade



Fifth Grade



Sixth Grade



Seventh Grade



Eighth Grade



Publicity

- Second Wave Media
www.secondwavemedia.com/metro/feature/detroit-waldorf-school.aspx
- Click On Detroit
www.nbcnews.com/news/education/tents-yurts-snowsuits-schools-seeking-alternativess-remote-learning-move-classes-n1235809
- NBC News
www.clickondetroit.com/news/local/2020/08/20/detroit-school-prepares-for-in-person-learning-by-adding-5000-square-feet-in-outdoor-classrooms/



"Outdoor education has always been at the heart of our educational philosophy and the outdoor classrooms enhance the quality of education for our students in numerous ways. The study of botany, gardening, local geography, environmental justice, and the central Waldorf tenant of observing the rhythms of the natural world, are fully embraced by learning outside."



Benefits

- Outdoor learning is proven to benefit student mental health and academic performance.
- Learning outdoors helps develop a sense of place and civic attitudes and behaviors.
- Outdoor education and these outdoor structures engage families and the greater community.



Enriched learning





Community Partnerships

- Engagement with Detroit community
- New and strengthened partnerships
- Classrooms offer collaborative spaces for community events and performances.



Mosaic Youth Theatre Camp

- Summer 2021, 2 weeks
- 3rd-8th graders

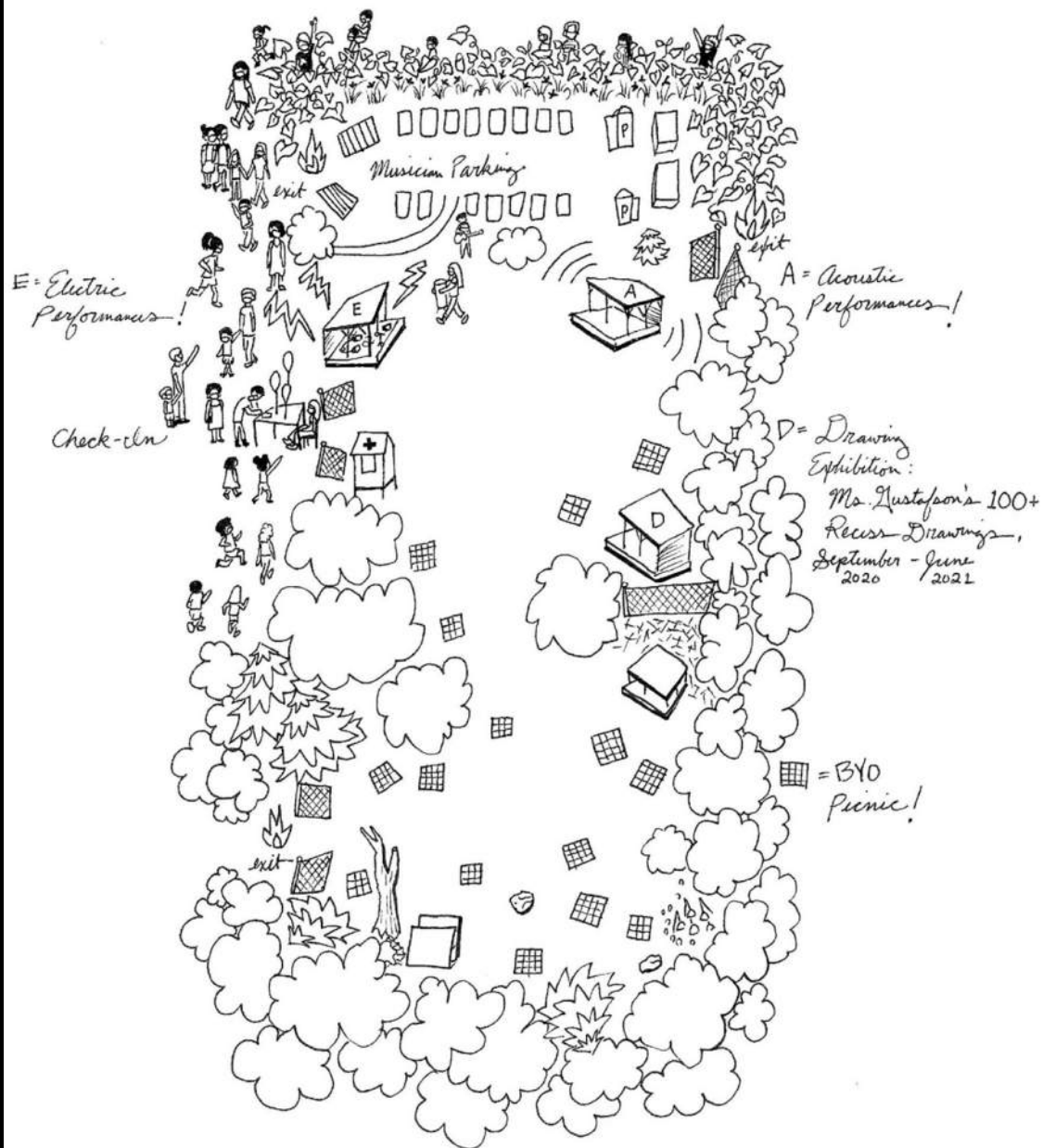


Community Music Festival

- Summer 2021
- Song, dance, poetry performances
- Also planned for Summer 2022



DWS MUSIC FEST! 2021



Storytelling Festival

- April 30, 2022
- Hosted by DWS Diversity, Equity, and Inclusion Committee
- Free and open to public
- Community Partners for event:
 - Mosaic Youth Theatre
 - Ruth Ellis Center
 - Detroit Disability Power
 - Detroit Pizza Bar
 - Cold Truth
 - Shakespeare in Detroit
 - Inside Out Literary Arts

"We feel the most alive when we are connecting with others and sharing our stories." -Brene Brown

Storytelling Festival

Saturday, April 30 12-4pm
at Detroit Waldorf School

We invite you to join us in our outdoor classrooms for an afternoon of storytelling featuring:

Ruth Ellis Center
Detroit Disability Power
Shakespeare in Detroit
Inside Out Literary Arts
DWS Teacher Simone Shurney
Andaiya Spencer
Eradajere Oleita
Jatu Gray
Jennine Spencer
DWS Middle School Students

Artwork by DWS student
Kameron Young

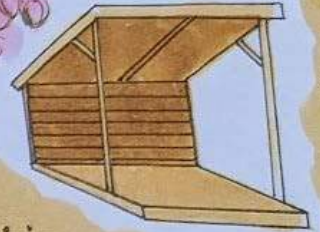
DETROIT
WALDORF
SCHOOL



Detroit Waldorf School

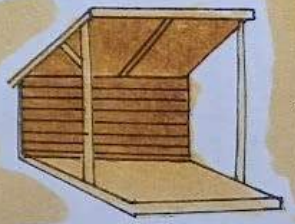


Honeybee



Hummingbird

Sunflower



Burns St.

Quietland





SIMONE SHURNEY, DWS TEACHER





ERADAJERE OLEITA, CHIP BAG PROJECT

Future Community Engagement

Serving our Detroit neighbors and community through the following future plans:

- Musical and theatre performances
- Art shows
- Community markets
- Winter faires
- Public engagements with community leaders and citizens
- Nonprofit partnerships
- Community festivals
- School collaborations
- Create additional revenue streams for our school and partners



A scenic view of a park during cherry blossom season. The foreground is dominated by a large, gnarled tree with thick, dark branches, heavily laden with light pink cherry blossoms. Below the tree, a white picket fence runs across the middle ground. In the background, a wooden pavilion with a flat roof is visible, surrounded by more trees and a clear blue sky. The ground is covered with a layer of fallen pink petals. The overall atmosphere is peaceful and beautiful.

Thank You