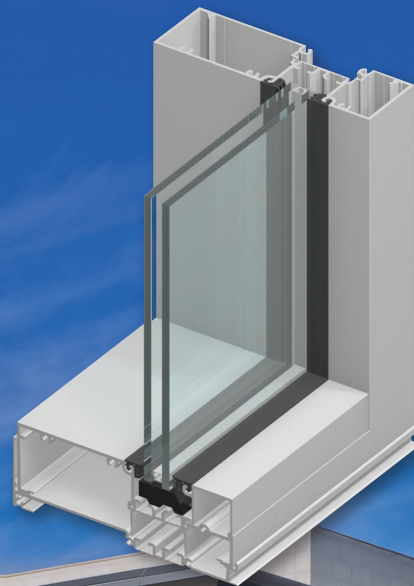


# E246 0

## Storefront Framing

E24650 Series Storefront Framing has the same design, assembly and accessories as the 14000 center glazed system's 2" face but with a 6-1/2" depth. This additional 2" depth on the interior side of the frame provides greater structural properties and allows taller first floor openings. The wider profile also cuts a distinctive image for a storefront that stands out from the crowd.

**FIRST AND SECOND FLOOR STOREFRONT**



**400 Series  
Curtainwall**

**ALSO  
USED  
WITH**

**Standard Wide  
Stile Entrance**

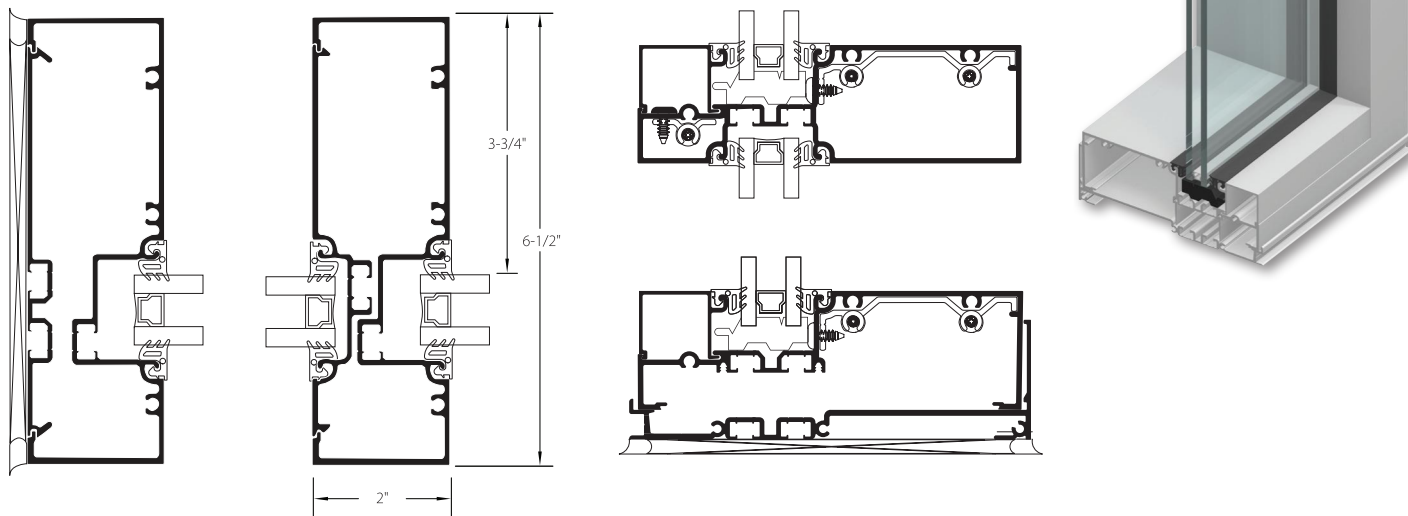
CC 35 Eagle Buildings A, H, J  
Photographer: Joe Hernandez

**TUBELITE®**  
**DEPENDABLE**

LEADERS IN ECO-EFFICIENT STOREFRONT,  
CURTAINWALL AND ENTRANCE SYSTEMS

# E24650

## Storefront Framing



### System Features:

- 2" x 6-1/2"
- Non-thermal
- Glass plane: Outside
- 1" standard infill (1/4" to 1-1/8")

### Optional Features:

- Screw-spline or shear block connections
- Steel reinforcing if required
- A wide variety of standard anodized and painted colors are available to complement any project with warranted protection, as well as street appeal.
- Integrates with: all Entrances, 3700 Insert Vents, and Sun Control

### Performance Test Standards

<b>Air Performance</b>	ASTM E 283
<b>Water Performance</b>	AAMA 501 and ASTM E 331
<b>Structural</b>	ASTM E 330
<b>Thermal</b>	AAMA 1503
<b>Thermal Break</b>	AAMA 505 and AAMA TIR-A8
<b>Acoustical</b>	AAMA 1801 and ASTM E 1425

### E24650 Series Product Specifications

**Application:** Medium-Rise storefront, front set glass, outside glazed

**Description:** 2" x 6-1/2" nonthermal, outside or inside flush glazed storefront, front set glass.

Face Width:	Overall Depths:	Glass Thickness:	Air Infiltration:	Water Infiltration:	Structural:	CRF:	U-Factor**:	Acoustic
2"	6-1/2"	1"	0.06 CFM/Ft.2 @ 6.24 PSF	12 PSF – Static 12 PSF – Dynamic	30 PSF – Design 45 PSF – Overload	P & D 63 <sub>f</sub> / 69 <sub>G</sub> Strut 72 <sub>f</sub> / 72 <sub>G</sub>	0.40 – P&D Filler 0.35 – Strut Filler	31 STC 25 OITC

\*\* U-Factor per NFRC 100: COG = 0.24 with warm edge spacer, 1-3/4" x 4-1/2" non-thermal frame.

Refer to the U-Factor table at: [www.tubeliteinc.com/products/storefront/e-t-series-storefront-framing/](http://www.tubeliteinc.com/products/storefront/e-t-series-storefront-framing/) for other glass makeups and configurations.

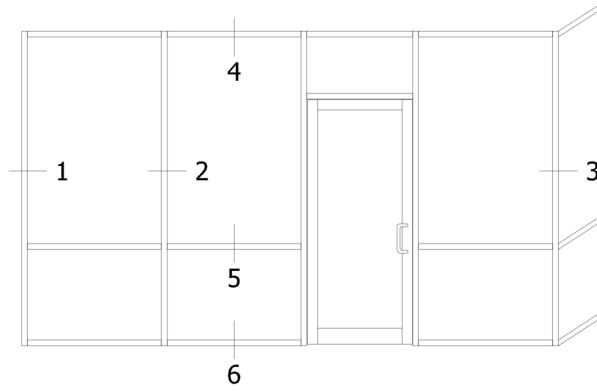
DISCLAIMER: Tubelite takes no responsibility for product selection or application, including, but not limited to, compliance with building codes, safety codes, laws, merchantability or fitness for a particular purpose; and further disclaims all liability for the use, in whole or in part, of this Technical Guide in preparation of project specifications and/or other documents. Technical Guides are subject to change at any time, without notice, and at Tubelite's sole discretion. ©2018 Tubelite Inc.

070120

# TUBELITE®

## DEPENDABLE

LEADERS IN ECO-EFFICIENT STOREFRONT,  
CURTAINWALL AND ENTRANCE SYSTEMS

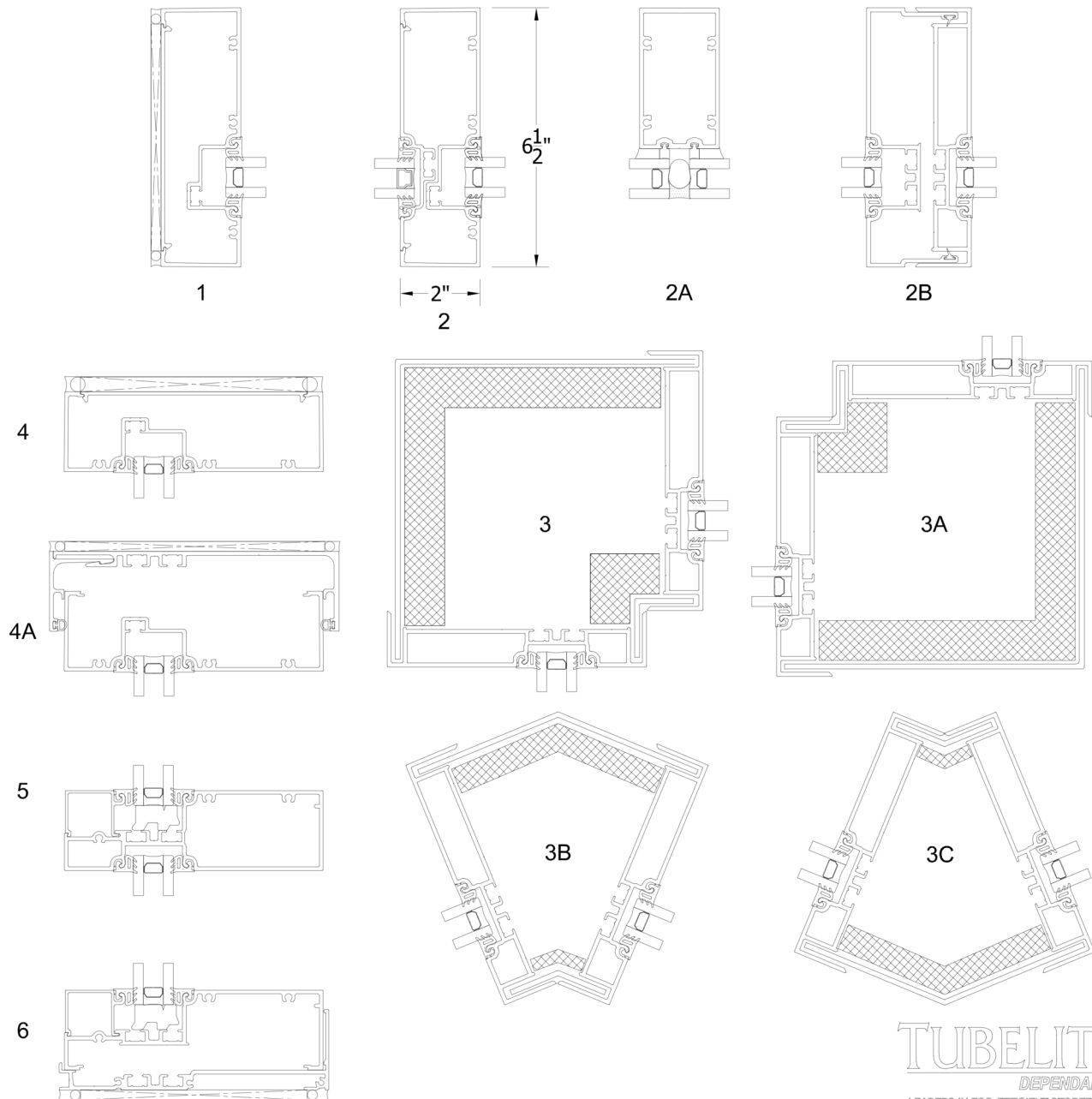


Tubelite reserves the right to change system configuration without prior notice when deemed necessary for product improvements.

Laws and building & safety codes governing the design and use of glazed entrance, window and curtain wall systems vary widely. Tubelite does not control the selection of product configurations, operating hardware or glazing materials, and assumes no responsibility thereof.

### Standard Outside Glaze Details

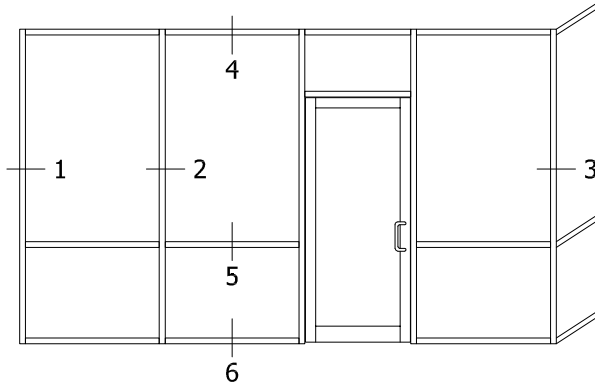
1/4 scale



June 2020

**TUBELITE®**  
 DEPENDABLE  
 LEADERS IN ECO-EFFICIENT STOREFRONT,  
 CURTAINWALL AND ENTRANCE SYSTEMS

For specific product applications, contact your Tubelite representative.  
 Details on this page represent standard details found on our website.  
 For more options, visit our website at [www.tubeliteinc.com/t24650-e24650-series-storefront-framing/](http://www.tubeliteinc.com/t24650-e24650-series-storefront-framing/)

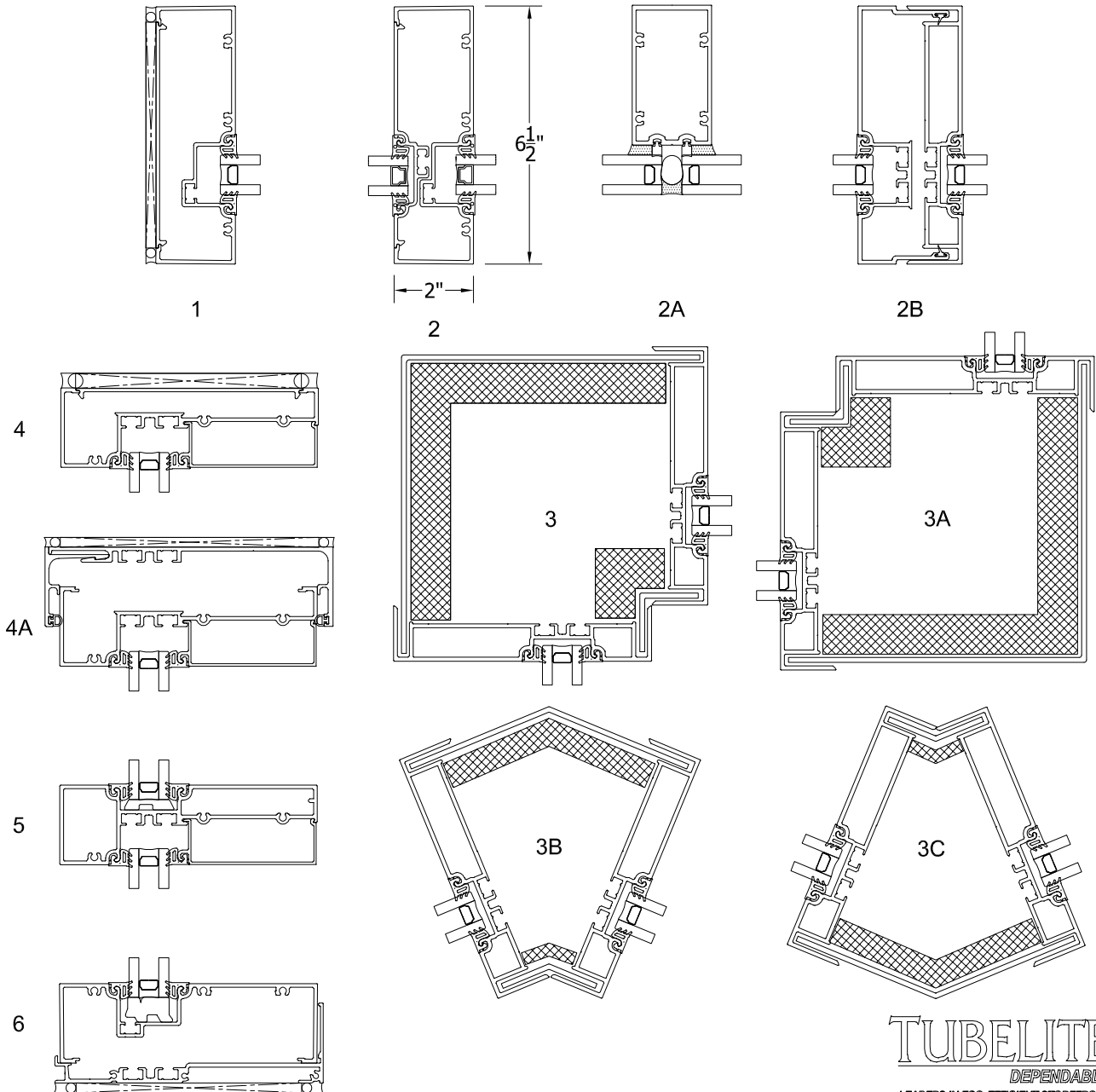


Tubelite reserves the right to change system configuration without prior notice when deemed necessary for product improvements.

Laws and building & safety codes governing the design and use of glazed entrance, window and curtain wall systems vary widely. Tubelite does not control the selection of product configurations, operating hardware or glazing materials, and assumes no responsibility thereof.

### Standard Inside Glaze Details

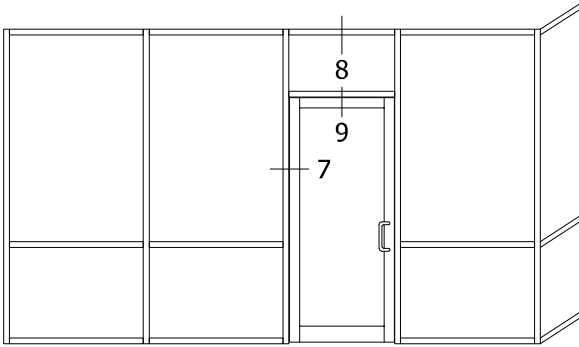
1/4 scale



June 2020

**TUBELITE®**  
 DEPENDABLE  
 LEADERS IN ECO-EFFICIENT STOREFRONT,  
 CURTAINWALL AND ENTRANCE SYSTEMS

For specific product applications, contact your Tubelite representative.  
 Details on this page represent standard details found on our website.  
 For more options, visit our website at [www.tubeliteinc.com/t24650-e24650-series-storefront-framing/](http://www.tubeliteinc.com/t24650-e24650-series-storefront-framing/)

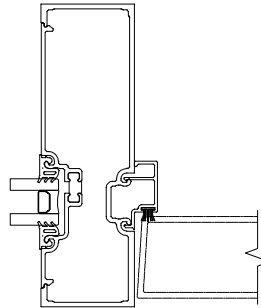


Tubelite reserves the right to change system configuration without prior notice when deemed necessary for product improvements.

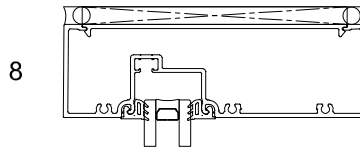
Laws and building & safety codes governing the design and use of glazed entrance, window and curtain wall systems vary widely. Tubelite does not control the selection of product configurations, operating hardware or glazing materials, and assumes no responsibility thereof.

### Door Details

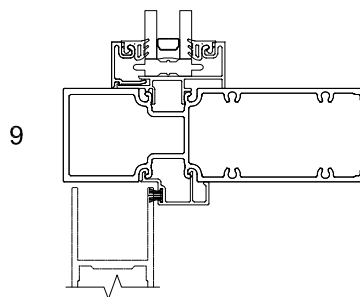
1/4 scale



7



8



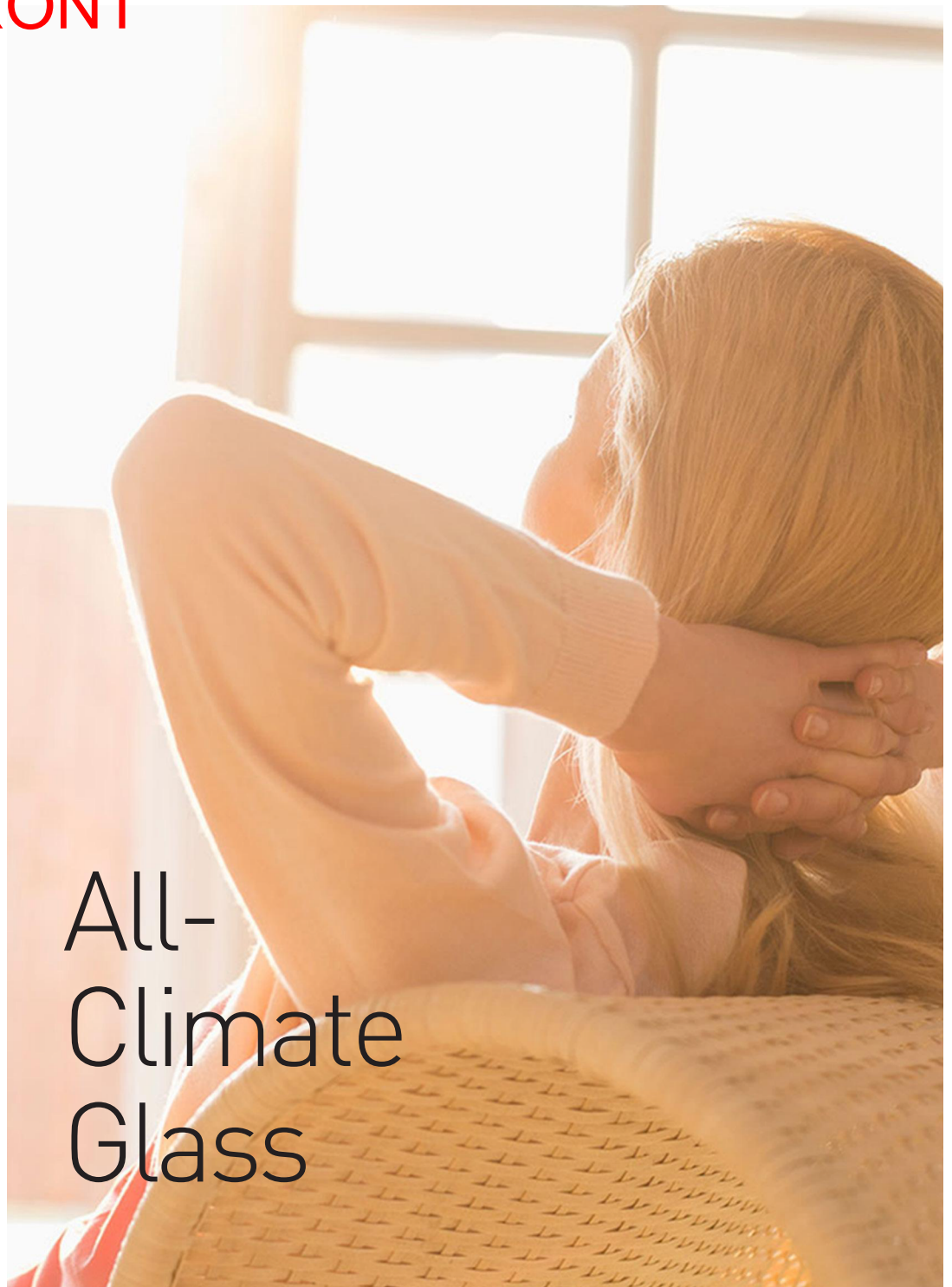
9

**TUBELITE**<sup>®</sup>  
 DEPENDABLE  
 LEADERS IN ECO-EFFICIENT STOREFRONT,  
 CURTAINWALL AND ENTRANCE SYSTEMS

June 2020

For specific product applications, contact your Tubelite representative.  
 Details on this page represent standard details found on our website.  
 For more options, visit our website at [www.tubeliteinc.com/t24650-e24650-series-storefront-framing/](http://www.tubeliteinc.com/t24650-e24650-series-storefront-framing/)

# STOREFRONT GLASS



All-  
Climate  
Glass



**CARDINAL CG**  ENGINEERING THE FUTURE OF COATED GLASS  
A CARDINAL GLASS INDUSTRIES COMPANY



Who says you can't do anything about the weather? Cardinal's LoE<sup>2</sup> coated glass delivers year-round comfort in all types of weather. In summer, it rejects the sun's heat and damaging UV rays. In winter, it reflects heat back into the room.



Cardinal LoE<sup>2</sup> glass includes two variations, LoE<sup>2</sup>-272 and LoE<sup>2</sup>-270. LoE<sup>2</sup>-272 offers a little more light transmittance, while LoE<sup>2</sup>-270 gives a little more solar control.

Regardless of where your home is located, choosing windows that provide you with the highest level of comfort and energy savings year-round is extremely important. And choosing the right glass for your windows is the most important factor in that decision. Go beyond ordinary low-E glass. Let LoE<sup>2</sup> glass help you handle the weather – any weather.

When the temperature is heading to the top of the thermometer, ordinary window glass simply welcomes in the heat. Cardinal LoE<sup>2</sup>, however, has been specially formulated to reject the sun's heat and damaging rays and keep your home cool and comfortable. The patented LoE<sup>2</sup> coating provides high-performance solar control and visual clarity. The end result of all this engineering is that Cardinal LoE<sup>2</sup> provides the ultimate in comfort because it reduces window heat gain by 50% or more when compared to ordinary glass.



Hot sun?  
Cool windows.

## Frigid outside, cozy inside.

During cold weather, the insulating effect of your windows has a direct impact on how your rooms feel. Typically, 75% of the exposed surface of a window is glass, and the temperature of the room-side of the glass directly affects the air temperature in the room. The better insulated the window glass, the warmer your room will be.

In fact, the Efficient Windows Collaborative ([www.efficientwindows.org](http://www.efficientwindows.org)) suggests that when glass surface temperatures fall below 52°F, there is a risk of thermal discomfort. To maintain the best comfort during the winter, select a glass product that produces surface temperatures that will stay above this point during the coldest outdoor conditions.



## INSIDE GLASS AND OUTSIDE TEMPERATURES

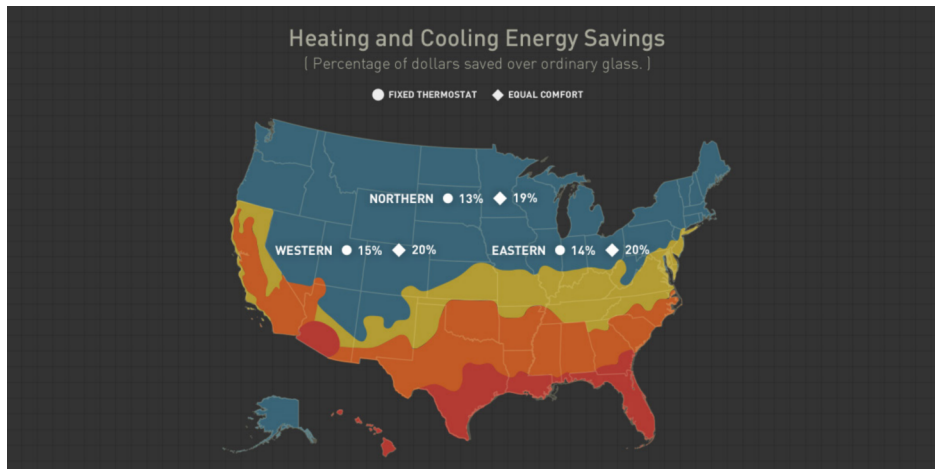
The table below compares the room-side center of glass temperatures of different glass types against two different winter conditions.

IG TYPE AND COATING	OUTSIDE TEMPERATURES	
	VERY COLD OUTSIDE -20°F (-30°C)	COLD OUTSIDE 20°F (-10°C)
	INSIDE TEMPERATURES	
Single-pane, Clear	0°F (-19°C)	31°F (-3°C)
Double-pane, Clear	37°F (2°C)	51°F (9°C)
Ordinary low-e (air fill)	46°F (7°C)	57°F (13°C)
<b>LoE<sup>2</sup>-272/270 (air fill)</b>	<b>49°F (9°C)</b>	<b>58°F (14°C)</b>
<b>LoE<sup>2</sup>-272/270 (argon fill)</b>	<b>52°F (10°C)</b>	<b>60°F (15°C)</b>

The superior insulating capability of Cardinal LoE<sup>2</sup> glass is a key factor in the construction of comfortable windows for cold climates. The dramatic comfort improvement from windows with warm glass surfaces also means the relative humidity of the indoor air can be controlled and maintained properly. Proper humidity levels (not too much, not too little) will improve comfort and promote a healthier living environment.

## Glass so smart, it controls your comfort.

Although windows provide beautiful views and wonderful natural light, they can also account for up to 50% of the heating and cooling energy consumed in a home. In the summer Cardinal LoE<sup>2</sup> keeps your home cool and comfortable by rejecting the sun's heat and damaging rays. In the winter it helps your home stay warm and cozy by blocking heat loss to the cold weather outside. In short, it can save energy year-round.



\*Thermostat settings are the largest variable in establishing the heating and cooling energy savings potential with window replacements. If you tolerate the discomfort from your current windows and don't change thermostat settings with the weather, consider the savings suggested from the "Fixed Thermostat" column. If on the other hand you frequently adjust the thermostat, add space heaters to compensate for cold rooms, or close drapes/blinds to block the sun, consider the additional savings suggested in the "Equal Comfort" column.



GLASS COMPARISONS

IG TYPE AND COATING	VISIBLE LIGHT			FADE TRANSMISSION		SOLAR	U-FACTOR	
	TRANSMITTANCE	EXTERNAL REFLECTANCE	INTERNAL REFLECTANCE	UV	ISO	HEAT GAIN COEFFICIENT	AIR FILL IP / SI	ARGON FILL IP / SI
Single-pane, Clear	90%	8%	8%	0.71	0.84	0.86	1.04 / 5.91	—
Double-pane, Clear	82%	15%	15%	0.58	0.75	0.78	0.48 / 2.73	—
Ordinary low-e	76%	17%	17%	0.50	0.68	0.72	0.34 / 1.93	0.30 / 1.70
LoE <sup>2</sup> -272	72%	11%	12%	0.16	0.55	0.41	0.30 / 1.70	0.25 / 1.42
LoE <sup>2</sup> -270	70%	12%	13%	0.14	0.53	0.37	0.30 / 1.70	0.25 / 1.42

**The difference is clear.**

Cardinal LoE<sup>2</sup> glass is ideal for all weather conditions in most climates. In summer, its patented coating blocks 86% of the sun’s harmful ultraviolet rays and 63% of the sun’s heat. It even outperforms the tinted glass often used in warm climates. You can see out and the light shines in, with no heavy bronze or smoke colored tints to darken the personality of your home. In winter, it reflects heat back into rooms.



LoE<sup>2</sup> glass can also be purchased in hurricane-resistant laminated glass and in a variety of shapes and sizes.

To learn more about LoE<sup>2</sup> and other Cardinal glass products, ask your window manufacturer, contractor or architect.

**CARDINAL CG** 






ENGINEERING THE FUTURE OF COATED GLASS

775 Prairie Center Drive,  
Eden Prairie, MN 55344  
cardinalcorp.com



# ALLEY WINDOW

## SYMBOL LEGEND

-  INDICATES FIELD APPLIED SEALANT BY OTHERS
-  FASTENERS BY OTHERS
-  INDICATES BLOCKING BY OTHERS
-  SHIM AS NEEDED BY OTHERS
-  SHEET NUMBER  
CUT SECTION

## FINISH SCHEDULE: COLOR

- 2604:
- 2605: DARK BRONZE
- ANODIZED:
- CUSTOMER TO PROVIDE COLOR CHIP
- OTHER:  
CUSTOMER TO VERIFY FINISH AND COLOR

## GLAZING SCHEDULE

### STANDARD GLAZING DESCRIPTION

1" ENERGY BASIC, CARD 272(DUAL SILVER), ARGON FILL-1/4 PANES

### VARIATIONS FROM STANDARD (NOTED ON WINDOW ELEVATIONS)

SYMBOL	DESCRIPTION
T	TEMPERED
SP	SPANDREL
OP	OPAQUE
OB	OBSCURE
CUSTOMER TO VERIFY GLAZING OPTIONS	

## WARRANTY

FINISH: 15 YEAR  
GLASS: 10 YEAR  
HARDWARE: 2 YEAR

## ABBREVIATIONS

M.O. = MASONRY OPENING  
O.R.O. = OVERALL ROUGH OPENING  
O.U.D. = OVERALL UNIT DIMENSION  
R.D. = RECEPTOR DIMENSION  
R.O. = ROUGH OPENING  
T.T.P. = TIP TO TIP OF PANNING  
U.D. = UNIT DIMENSION

AWN = AWNING  
CA = CASEMENT  
DH = DOUBLE HUNG  
HOP = HOPPER  
SH = SINGLE HUNG  
SL = HORIZONTAL SLIDING  
DS = DIRECT SET

## INDEX

SHEET #	DESCRIPTION
A1	COVER SHEET
A2	GENERAL NOTES
A3-A4	ELEVATIONS
C1-C3	CUT DETAILS

## GENERAL WINDOW DETAILS AND NOTES

ELEVATIONS ARE VIEWED FROM THE EXTERIOR  
DEVIATIONS FROM GENERAL WINDOW DETAILS AND NOTES TO BE LISTED ON WINDOW ELEVATIONS  
CUSTOMER TO VERIFY COUNTS AND SIZES

SERIES: E300  
CONFIGURATIONS: DS

### GRIDS:

- EXTERIOR: N/A
- INTERNAL: N/A
- INTERIOR: N/A

HARDWARE: N/A

### SCREENS:

- N/A

### ADDITIONAL PARTS:

- CUSTOM APPLIED FRAME PROFILES-(3)
- CUSTOM PRE-SET PAN-(1)
- CUSTOM C-MULL STK EXP-(1)
- SILL FLASHING-13716
- SNAP TRIM-1 1/2" X 1 1/4"
- STK EXP MULL(AS NOTED)-21087
- STK MULL (AS NOTED)-537248
- 2" FLAT APPLIED (AS NOTED)-764
- STRUCTURAL TUBE (AS NOTED)-21586 (FIELD APPLIED)  
(INCLUDE W/ 536207)

### EXAMPLE ELEVATION DESCRIPTION

WINDOW TYPE → **TYPE X**  
WINDOW CONFIGURATION → XX  
DEVIATIONS FROM GENERAL → XXXXX  
DETAILS AND NOTES  
QUANTITY → QTY. X

NO.	REVISIONS	BY	DATE
1	SIZE/DESIGN CHANGES	ROD BOCK	3-17-17

Project Name: **BOOK BUILDING**

## GENERAL NOTES

Description:

QUAKER WINDOW PRODUCTS  
WILL NOT BE RESPONSIBLE  
FOR FIELD MEASUREMENT  
QUANTITIES, & INSTALLATION  
DESIGN. CONTRACTOR MUST  
VERIFY ALL DIMENSIONS.

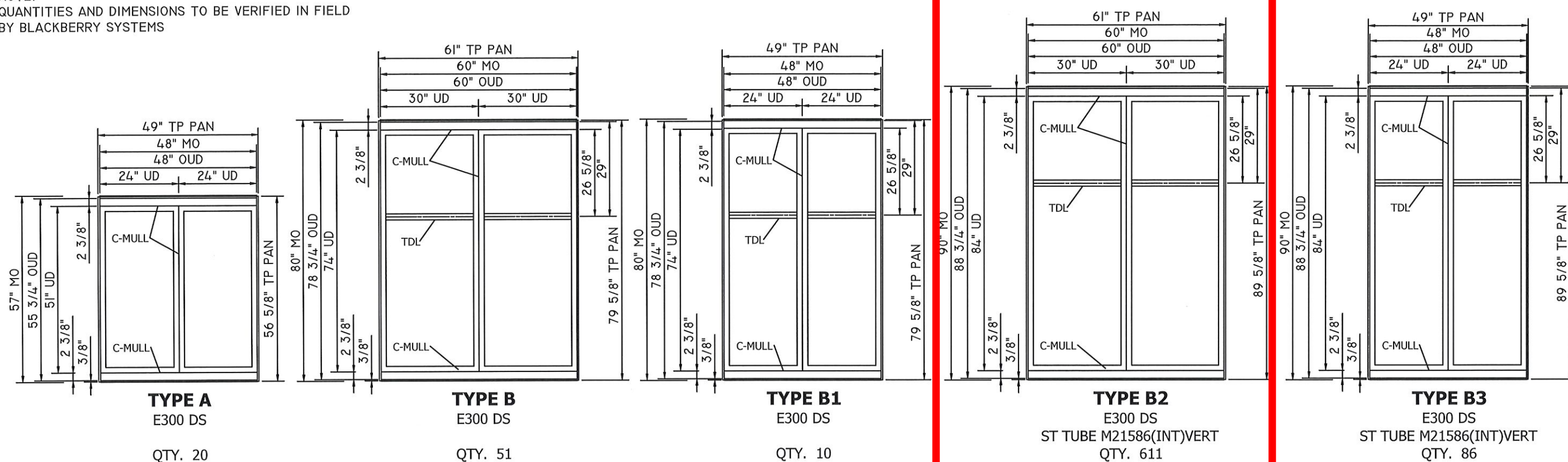
PHONE (573)-744-5211  
FAX (573)-744-5586  
COMMERCIAL  
www.quakerwindows.com

Scale: NONE  
Sheet #: **A2**

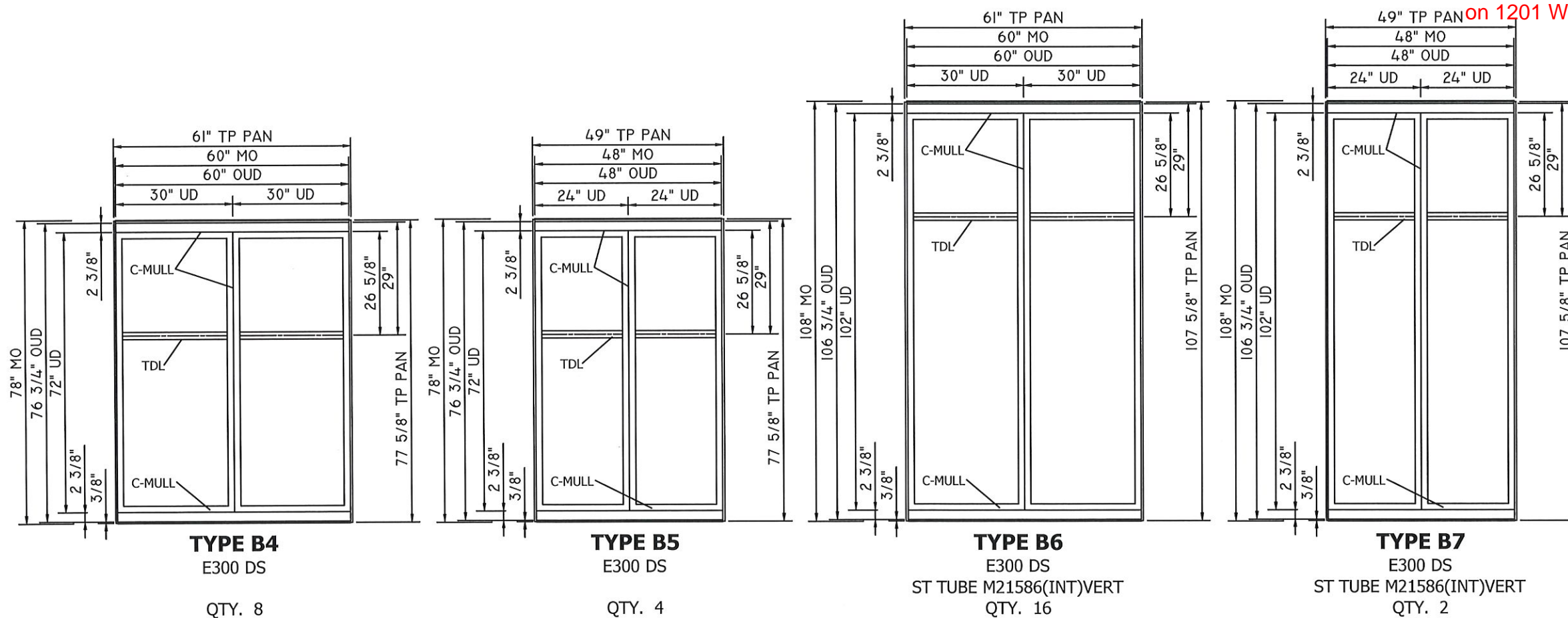
Drawn By: **ROD BOCK**  
Date: **2-24-17**



NOTE:  
 QUANTITIES AND DIMENSIONS TO BE VERIFIED IN FIELD  
 BY BLACKBERRY SYSTEMS



Window type to be used  
 on 1201 Washington Blvd



Project Name: **BOOK BUILDING**

Description: **ELEVATIONS**

QUAKER WINDOW PRODUCTS  
 WILL NOT BE RESPONSIBLE  
 FOR FIELD MEASUREMENT,  
 QUANTITIES, & INSTALLATION  
 DESIGN. CONTRACTOR MUST  
 VERIFY ALL DIMENSIONS.

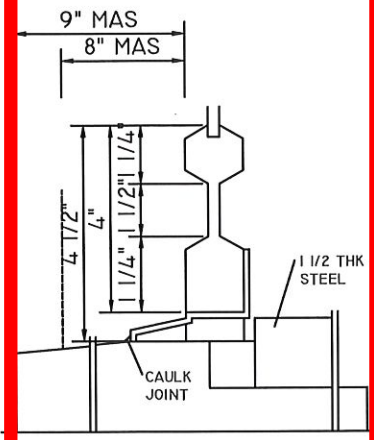
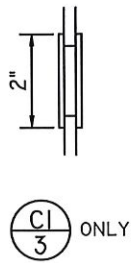
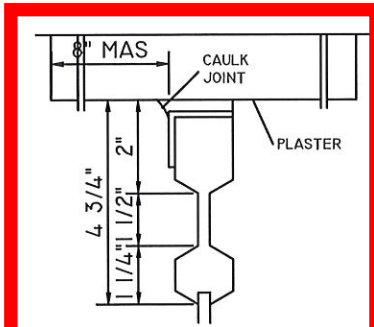
PHONE (573)-744-5211  
 FAX (573)-744-5686  
 COMMERCIAL  
 www.quakerwindows.com  
 Scale: NONE  
 Sheet #: A3

**QUAKER**  
 COMMERCIAL WINDOW AND DOOR

Drawn By: **ROD BOCK**  
 Date: **2-24-17**

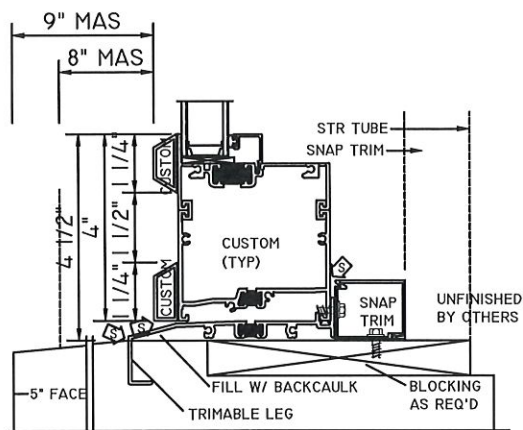
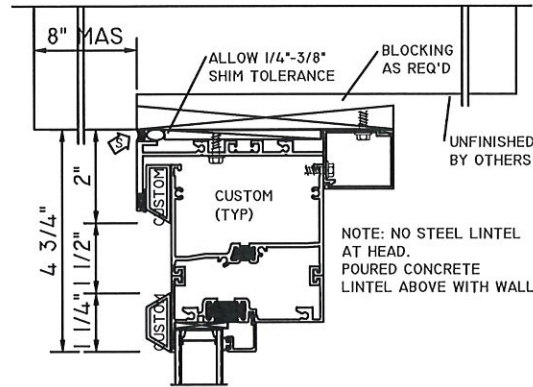
504 Highway 63 South  
 Freeburg, MO 65035  
 rbock@quakerwindows.com

EXTERIOR

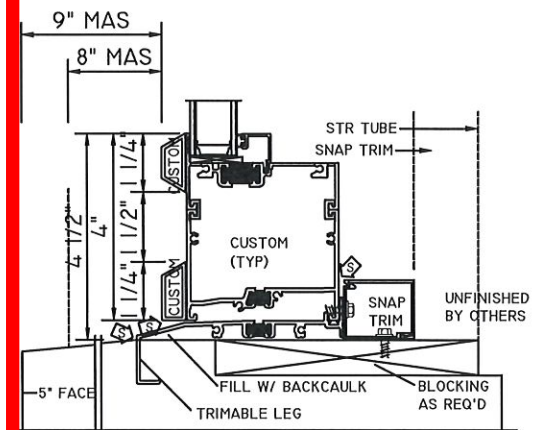
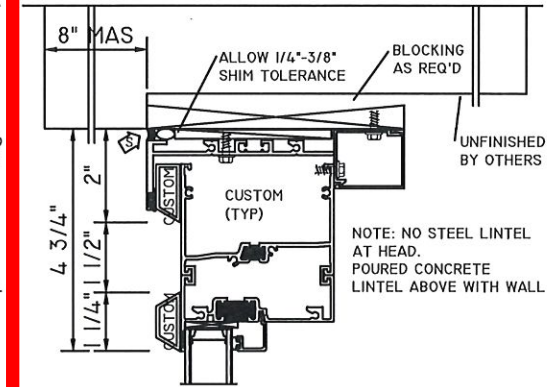


EXISTING DETAIL CI 1 CI 3

Window type to be used on 1201 Washington Blvd



PROPOSED DETAIL CI 1



PROPOSED DETAIL CI 3

Window type to be used on 1201 Washington Blvd

**SYMBOLS LEGEND**

⊞	INDICATES FIELD APPLIED SEALANT
⊠	FASTENERS BY ERECTOR
⊞	INDICATES BLOCKING BY ERECTOR
⊞	SHIM AS NEEDED

**NOTICE:**  
QUAKER DOES NOT SUPPLY ANY FASTENERS, SHIMS, BACKER ROD, OR SEALANTS, UNLESS OTHERWISE NOTED.

VERIFY INSTALLATION  
VERIFY WALL DETAILS

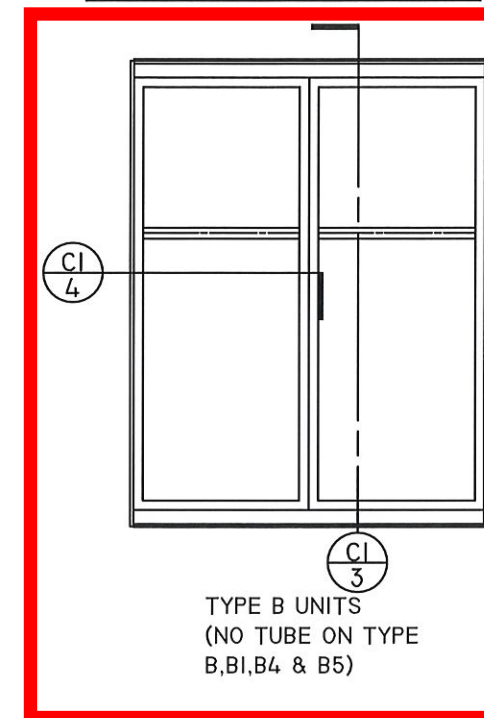
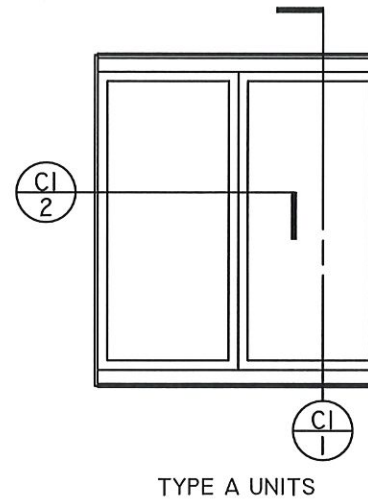
ALL PANNING SHALL BE FIELD FIT & TRIMMED BY THE INSTALLER

ALL PANNING TO BE SEALED IN THE FIELD BY OTHERS

SEALANT MUST MEET OR EXCEED ASTM C920-11 SPECIFICATION

PROVIDE ADEQUATE BLOCKING TO SUPPORT THE SILL OF THE WINDOW

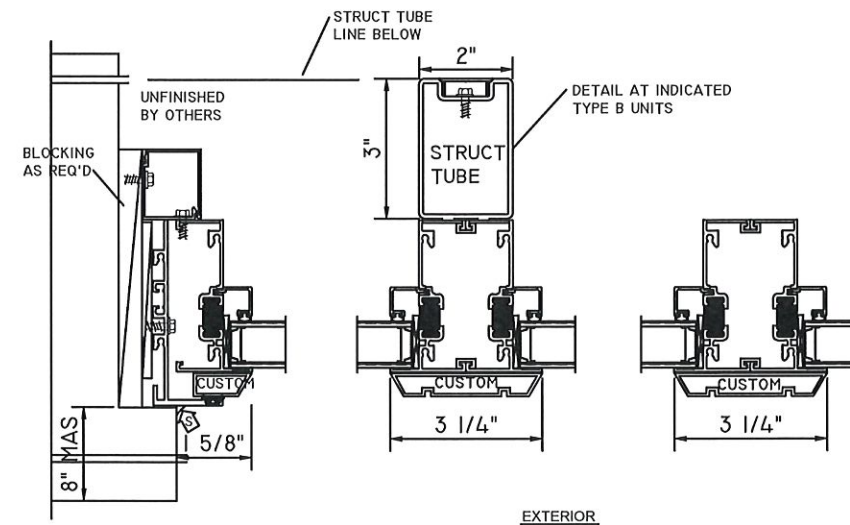
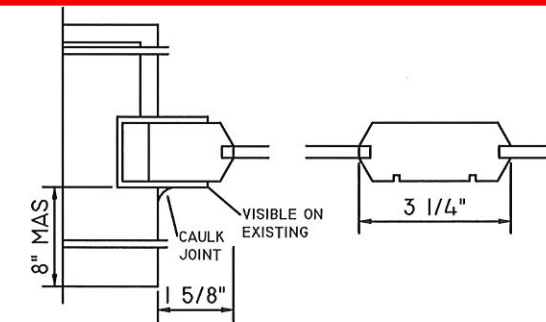
PACK INSULATION AROUND WINDOW FRAME. DO NOT USE EXPANDING OR SPRAY-IN TYPE FOAMS.



Window type to be used on 1201 Washington Blvd

EXISTING DETAIL CI 2 CI 4

PROPOSED DETAIL CI 2 CI 4



EXTERIOR

Project Name: **BOOK BUILDING**

Description: **CUT DETAILS**

PHONE (573)-744-5211  
FAX (573)-744-5586  
COMMERCIAL  
www.quakerwindows.com

**QUAKER**  
COMMERCIAL WINDOW AND DOOR

QUAKER WINDOW PRODUCTS WILL NOT BE RESPONSIBLE FOR FIELD MEASUREMENT, QUANTITIES, & INSTALLATION DESIGN. CONTRACTOR MUST VERIFY ALL DIMENSIONS.

Scale: **NONE**  
Sheet #: **C1**  
Drawn By: **ROD BOCK**  
Date: **2-24-17**  
504 Highway 63 South  
Freeburg, MO 65035  
rbock@quakerwindows.com

ALLEY WINDOW

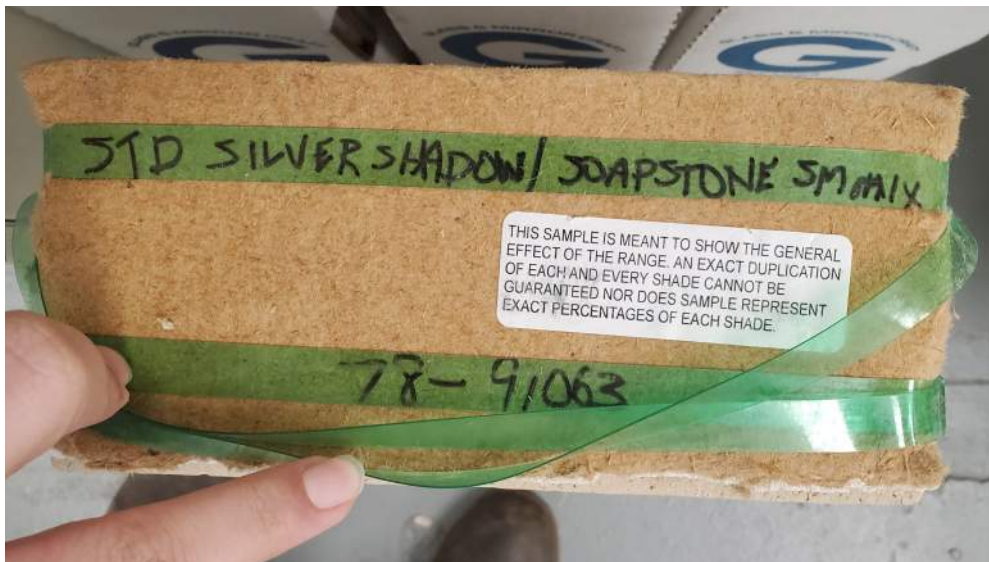


# BRICK FOR ALLEY WALL



Selected Mortar color

Brick Color Samples



# Vanderbilt® CLASSIC

## BASIC INDIANA LIMESTONE TO MATCH EXISTING



Estate Veneer Series  
Vanderbilt Classic®



# Vanderbilt Classic® Full Bed Veneer

## Smooth Face 3-5/8" Bed Depth

Vanderbilt Classic® Smooth is a solid, genuine, and natural Indiana Limestone sawn veneer. The strong, clean look of real limestone is ideal for commercial, industrial, and fine residential structures.

### Modular Units

- Made of the same naturally durable and high quality raw material used in our nation's most renowned buildings.
- Use proven, time-tested natural stone readily available in full bed thickness, precision cut modular units.
- Full Color Blend exhibits the subtle natural color range that has become the standard of Indiana Limestone over the last 150 years.
- Indiana Limestone is the classic complement to brick and other building materials.
- Available in standard sizes of 4", 8", 12", or 16" heights by 24" in length.

### Competitively Priced

- A historic natural stone competitively priced to engineered or cast stone imitations.
- Cost effective modular unit installation using traditional brick ties and having proper coverage/weight balance for efficient setting.
- Packaged ready-to-set and easily trimmed in the field for corner, door, and window openings.

### Trim and Accent

- A full line of standard accent units is available to match the entire range of color of Vanderbilt Classic®.



### Vanderbilt Classic® Smooth Face

Product ID	Color	Height	Depth	Length
1200-100	FCB	3-5/8"	3-5/8"	23-5/8"
1200-101	FCB	7-5/8"	3-5/8"	23-5/8"
1200-102	FCB	11-5/8"	3-5/8"	23-5/8"
1200-103	FCB	15-5/8"	3-5/8"	23-5/8"
1260-100	Gray	3-5/8"	3-5/8"	23-5/8"
1260-101	Gray	7-5/8"	3-5/8"	23-5/8"
1260-102	Gray	11-5/8"	3-5/8"	23-5/8"
1260-103	Gray	15-5/8"	3-5/8"	23-5/8"

Also available in 35-5/8" length

### Product Description and Packaging

- Standard grade Full Color Blend or Gray material
- Smooth face with sawn top, bottom, back, and ends
- Tolerances:  
Height (+/-) 1/16"  
Length (+/-) 1/16"  
Depth (+/-) 1/16"
- Palletized on 48" x 48" pallet



# AQUA 200 SQUARE LX

## UP + DOWN SCONCE

# EXTERIOR SCONCE

### PROJECT

Job \_\_\_\_\_

Type \_\_\_\_\_

Part # \_\_\_\_\_

Notes

### SPECIFICATIONS

- Source** Two Xicato XTM LED modules - up to 1300 source lumens each
- CCT** 2700K, 3000K, 3500K or 4000K
- Color Consistency** 1x2 SDCM (MacAdam) along BBL, CCT +/- 40K to 70K, Duv +/- .001
- CRI (Ra)** 83 or 98
- Driver / Location** Included / must be remote mounted
- Dimming** 0-10V or phase to 10% standard; Ecosystem, DALI, DMX and 1% available
- Input Voltage** 100 to 277VAC (347VAC consult factory), phase dimmable versions are 120VAC only
- Power** Up to 35 watts max, depending on LED module / driver
- Reflector** 10°, 20°, 40°, 60° & optical accessories
- Materials** Tamper resistant design, stainless steel hardware, metal reflectors
- Finish** Powder coat - Exterior grade TGIC polyester, optional marine-grade finish
- Weight** 7.0 lb. [3.2 kg]
- Location** Listed for Wet location, tested to IP66 per IEC 60529
- Approvals** ETL Listed to UL 1598, 2108, 8750 and CSA C22.2# 9 & #250.0
- L70 Life** > 55,000 hours at 70% lumen maintenance, LM80 / TM-21, see pg 2
- Warranty** Lifetime Limited Warranty - see warranty for details
- IES Files** LM-79-08 IES files available
- Modifications** Any modification or customization is possible - consult factory



### ORDERING LOGIC

Model	Driver Location	# of Circuits	Dimming	Up				Optical Accessory	Down				Optical Accessory	Shell Color
				Output	CRI	CCT	Reflector		Output	CRI	CCT	Reflector		
K2SU	R													
K2SU	R=Remote	1=1 2=2	N=None P=Phase, 10% V=0-10V, 10%	07=700 lm 10=965 lm*	83=83 98=98	27=2700K 30=3000K 35=3500K 40=4000K	10=10° 20=20° 40=40° 60=60°	NN=None DF* LS* WW* FT*	07=700 lm 10=965 lm*	83=83 98=98	27=2700K 30=3000K 35=3500K 40=4000K	10=10° 20=20° 40=40° 60=60°	NN=None HL* DF* LS* WW* FT*	XX=v2 color see pg 4 ZZ=Custom add +MF for Marine Finish *see pg 3
premium drivers (REMOTE location only): Z1=eldoLED 0-10V, 0% Z2=eldoLED DALI, 0% Z3=eldoLED DMX, 0% Z4=Lutron Hi-Lume™ LDE1, 0-10V, 0% Z5=Lutron Hi-Lume™ LTEA, Phase, 1% Z6=Lutron 5-Series™ LDE5, 0-10V, 5%				*available in 83CRI only				*available in 83CRI only						

Example Part Number: **K2SU-R1V-10832710NN-138304060NN-L1**

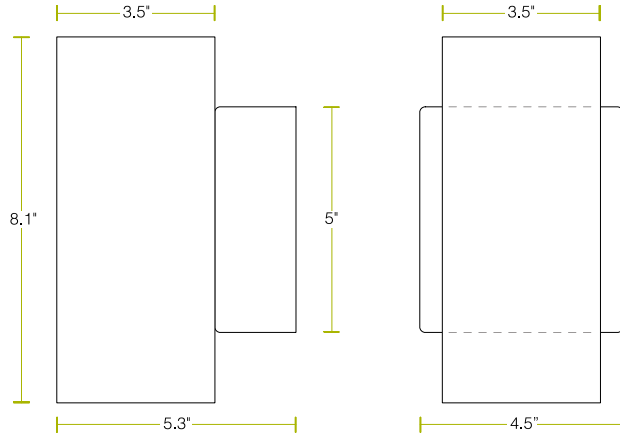
**K** AQUA 200 Square LX Up+Down Sconce - Remote Driver, 1 Circuit, 0-10V Dim - Up: 1000lm, 83CRI, 2700K, 10° - Down: 1300lm, 83CRI, 4000K, 60° - L1 Gloss White



# AQUA 200 SQUARE LX

## UP + DOWN SCONCE

### DIMENSIONS



Canopy fits standard 3.5" and 4" round and octagonal junction boxes  
 Not to scale, dimensions are nominal  
 Go to [www.v2LightingGroup.com](http://www.v2LightingGroup.com) for CAD drawings

### LED OPTIONS

Reflector Option	LED Specifications					
	LES <sup>1</sup>	L70 <sup>2</sup>	CRI	Lumens <sup>3,4,5</sup>	Wattage <sup>6</sup>	Efficacy <sup>7</sup> (lm/W)
10°	9mm	> 33,000 hours	Ra = 83 ±3	720	7.4	97
			Ra = 98	965	10.9	89
20°, 40°, 60°	19mm	> 55,000 hours	Ra = 83 ±3	720	4.5	160
			Ra = 98 R9 ≥ 90 R15 ≥ 95	965	6.6	146
				1300	9.5	137
			720	6.3	114	
			965	9.2	104	

<sup>1</sup> LES: Light Emitting Surface diameter  
<sup>2</sup> 70% lumen maintenance based on IESNA LM-80-08 and TM-21  
<sup>3</sup> ±10%  
<sup>4</sup> Typical source lumens - see photometrics on page 3 for LOR to calculate delivered lumens  
<sup>5</sup> Higher lumen outputs are available in AQUA 300 and 400 series  
<sup>6</sup> Typical luminaire wattage including LED driver = LED wattage x 1.2  
<sup>7</sup> Higher efficacies may be available via lower drive currents - consult factory

### CONTROL OPTIONS

Driver Option	Odering Code	Description
Standard LED Drivers* (included in base price)	<b>N</b>	No dimming
	<b>V</b>	0-10V dimming to 10%
	<b>P</b>	Phase dimming to 10% Compatible with both forward and reverse phase dimmers
Optional LED Drivers*	<b>Z1</b>	eldoLED, 0-10V dimming to 0%
	<b>Z2</b>	eldoLED, DALI dimming to 0%
	<b>Z3</b>	eldoLED, DMX dimming to 0%
	<b>Z4</b>	Lutron Hi-lume™, EcoSystem to 1% with Fade-to-Black (-LDE1)
	<b>Z5</b>	Lutron Hi-lume™, Forward phase dimming to 1% (-LTEA)
	<b>Z6</b>	Lutron 5-series, EcoSystem to 5% (-LDE5)

\* Standard LED drivers are suitable for Wet Location  
 \* Optional LED drivers are suitable for Damp Location remote mount only  
 \* For EM applications:  
 v2's Remote EM Solution is compatible with all LED options

All LED drivers may be used with 3rd party inverter style systems



# AQUA 200 SQUARE LX

## UP + DOWN SCONCE

### COLOR OPTIONS

#### Basic Powder Coat



**GW**  
Gloss White



**SW**  
Satin White  
**AW**   
Antimicrobial option



**TW**  
Textured  
Matte White



**TB**  
Textured  
Matte Black

#### Satin Anodized Effect Powder Coat



**CS**  
Clear Silver



**OB**  
Oil-Rubbed  
Bronze

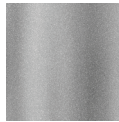


**DB**  
Dark Bronze

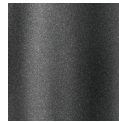


**SB**  
Satin Black

#### Metallic Powder Coat



**SG**  
Silver Gray



**CG**  
Charcoal  
Gray



**CU**  
Copper



**BR**  
Brass

#### Gloss Powder Coat (80-95% Gloss)



**GO**  
Orange  
(RAL 2003)



**GR**  
Red  
(RAL 3020)



**GM**  
Magenta  
(RAL 4010)



**GB**  
Blue  
(RAL 5015)

#### Aluminum



**BA**  
Brushed Aluminum  
Cost adder applies.

#### Special Order



**RAL** \_ \_ \_ \_  
Most RAL Classic Colors (80-95% Gloss) are available for powder coat - consult ALW. Minimum setup fee applies.  
See: [alwusa.com/finishes](http://alwusa.com/finishes) for more information



**CAT** \_ \_ \_ \_  
The complete range of powder coat colors from the Tiger Drylac and TCI catalogs are available - consult ALW. Minimum setup fee applies.

#### Custom



**CCM** \_ \_ \_ \_  
Custom powder coat color matching is available - consult ALW. Premium setup fee applies.

Printed or on-screen colors are only approximations - consult actual Color Chip Set before specifying

Note: An individual setup fee will apply to each unique Special Order/Custom Finish per purchase order.  
(ex: RAL 5023 and RAL 2008 are specified for multiple line items on a purchase order. 2x setup fees will apply)

# SITE MATERIALS

OLD Document\_05-10-22\_The applicant submitted a new site material page



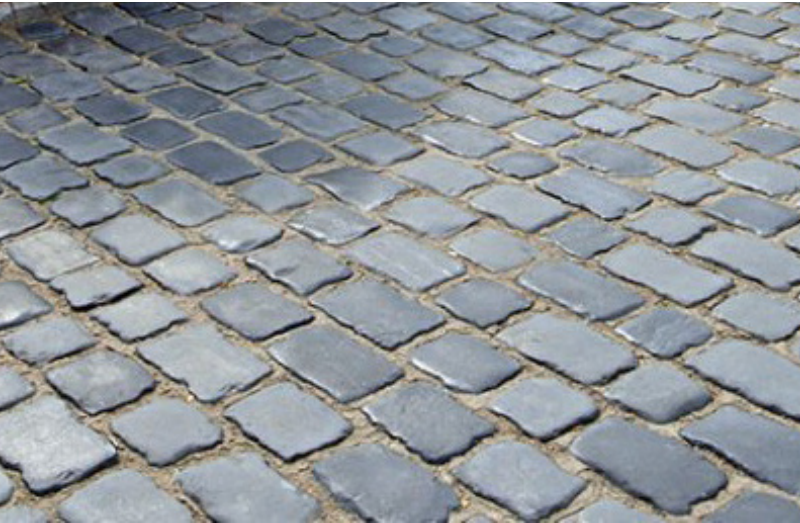
GRANITE CURB



CONCRETE SIDEWALK



ALLEY COBBLE PAVERS



MAIN ENTRY COBBLE PAVERS



PERMEABLE PAVERS