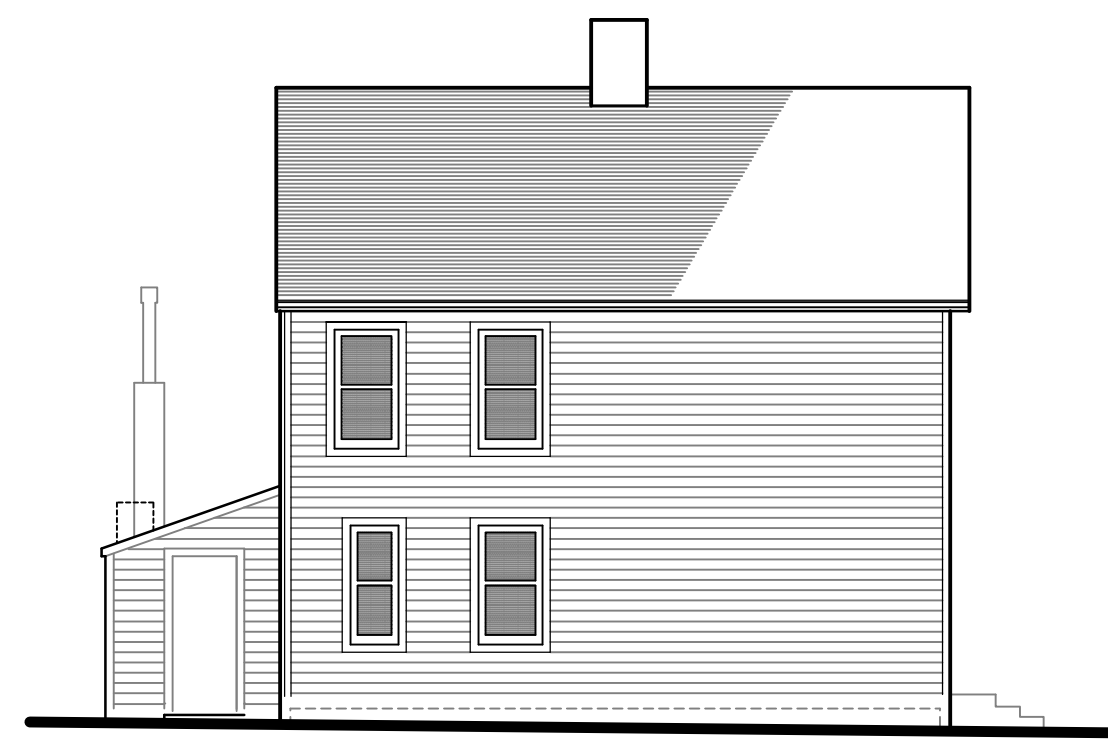


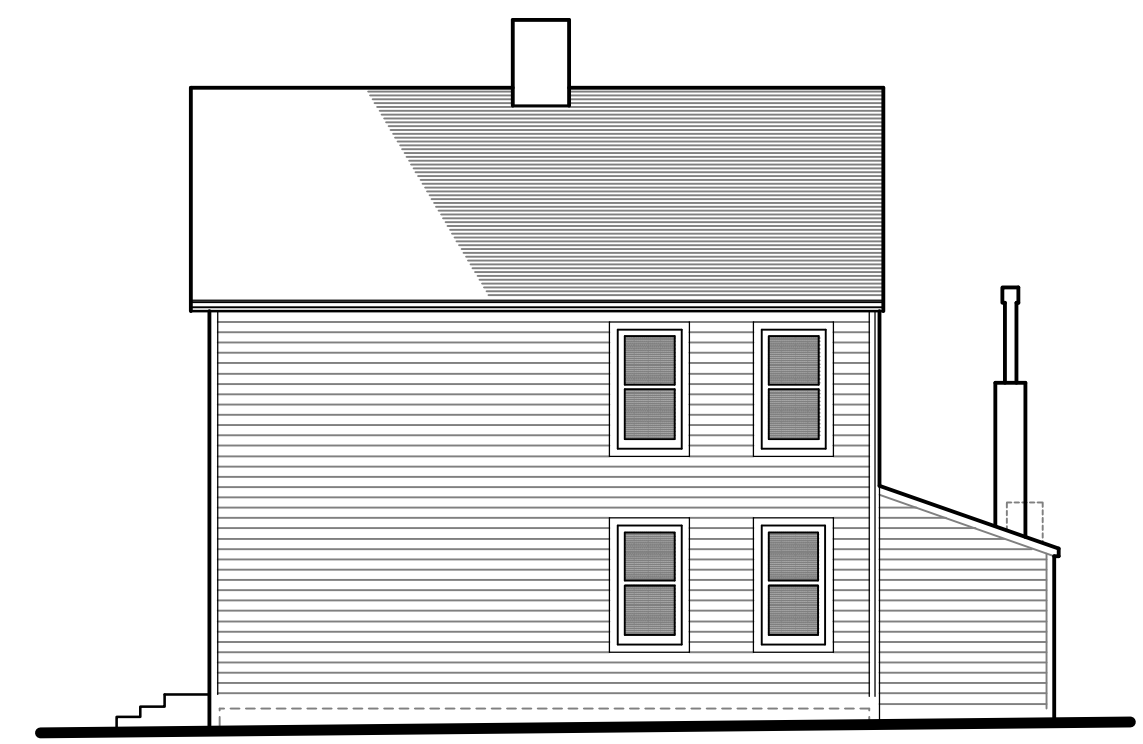
ALL DESIGN ARRANGEMENTS AND PLANS INDICATED BY THIS DOCUMENT ARE THE PROPERTY OF MORRISON KATTMAN MENZE, INC. AND ARE TO BE USED ONLY FOR THE PROJECT AND LOCATION SPECIFICALLY IDENTIFIED HEREIN. ANY REUSE, REPRODUCTION, OR MODIFICATION OF ANY PART OF THIS DOCUMENT WITHOUT THE WRITTEN PERMISSION OF MORRISON KATTMAN MENZE, INC. IS STRICTLY PROHIBITED. THE USER SHALL BE RESPONSIBLE FOR OBTAINING ALL NECESSARY PERMITS AND APPROVALS FROM THE APPROPRIATE AGENCIES. ALL DIMENSIONS AND CONDITIONS ON THE DRAWINGS MUST BE SUBMITTED TO THE ARCHITECT FOR REVIEW AND APPROVAL BEFORE PROCEEDING WITH FABRICATION. MORRISON KATTMAN MENZE, INC. SHALL NOT BE RESPONSIBLE FOR ANY ERRORS OR OMISSIONS IN THESE DRAWINGS.



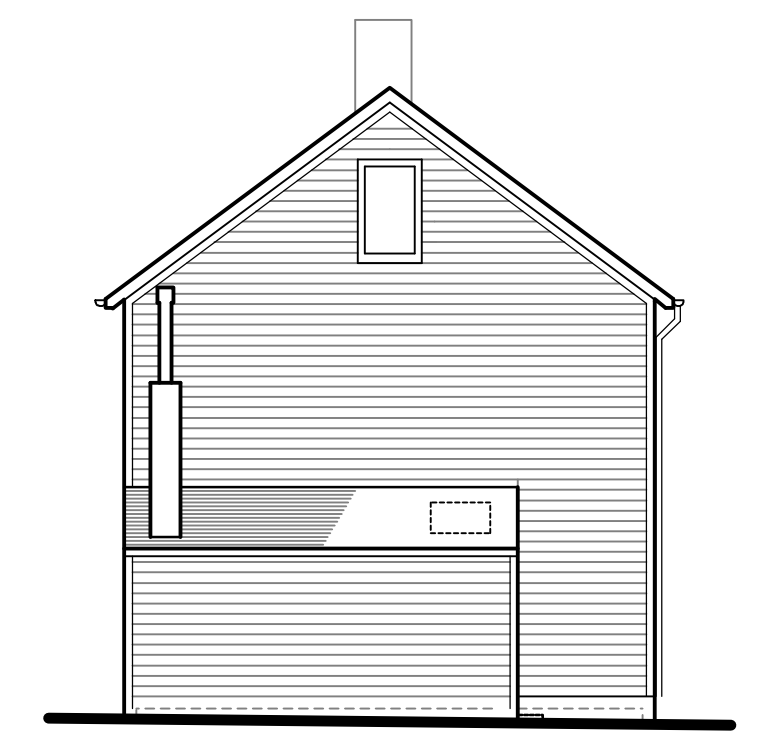
#1440, 6th St.
North Elevation
1/8" = 1'-0"



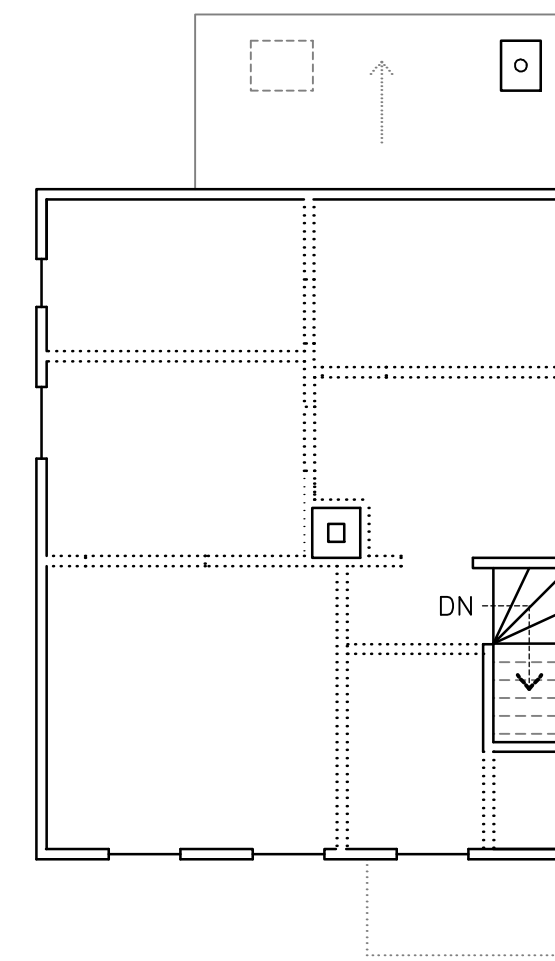
#1440, 6th St.
West Elevation
1/8" = 1'-0"



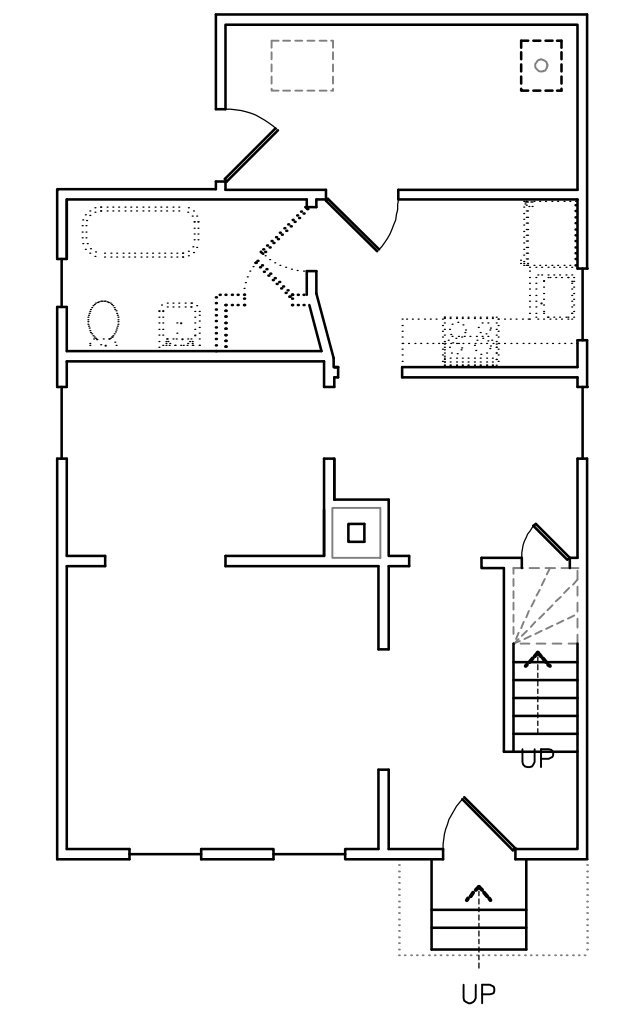
#1440, 6th St.
South Elevation
1/8" = 1'-0"



#1440, 6th St.
East Elevation
1/8" = 1'-0"



#1440, 6th St.
Upper Flr. Plan
1/8" = 1'-0"



#1440, 6th St.
Main Flr. Plan
1/8" = 1'-0"

IN-PROGRESS
DOCUMENT
NOT FOR
CONSTRUCTION

Labrosse Place, Inc.
1450 Sixth St., Apt. C
Detroit, Michigan 48226
Timothy McKay, President
#1440, 6th St. - Plans + Elevations

0251

10-24-02

3/3