

ALL IDEAS, DESIGNS, ARRANGEMENTS AND PLANS INDICATED BY THIS DOCUMENT ARE THE PROPERTY OF MORRISON KATTMAN MENZE, INC. AND WILL BE CREDITED AND DEVELOPED FOR USE ON, AND FOR THE BENEFIT OF, THE PROJECT AND SITE INDICATED HEREON. DESIGNS, ARRANGEMENTS OR PLANS SHALL BE USED BY OR DERIVED FROM THE WORK OF MORRISON KATTMAN MENZE, INC. WITHOUT THE WRITTEN PERMISSION OF MORRISON KATTMAN MENZE, INC. NO OTHER SHALL BE PERMITTED TO REPRODUCE OR FOR INFORMATION PURPOSES. THE USER SHALL BE RESPONSIBLE FOR OBTAINING ALL NECESSARY PERMITS AND APPROVALS FROM THE APPROPRIATE AGENCIES. ALL DIMENSIONS AND CONDITIONS ON THE JOB AND THIS OFFICE MUST BE SHOWN BY THESE DRAWINGS. SHOP DRAWINGS MUST BE SUBMITTED AND APPROVED BY THE ARCHITECT BEFORE PROCEEDING WITH FABRICATION AND/OR INSTALLATION.

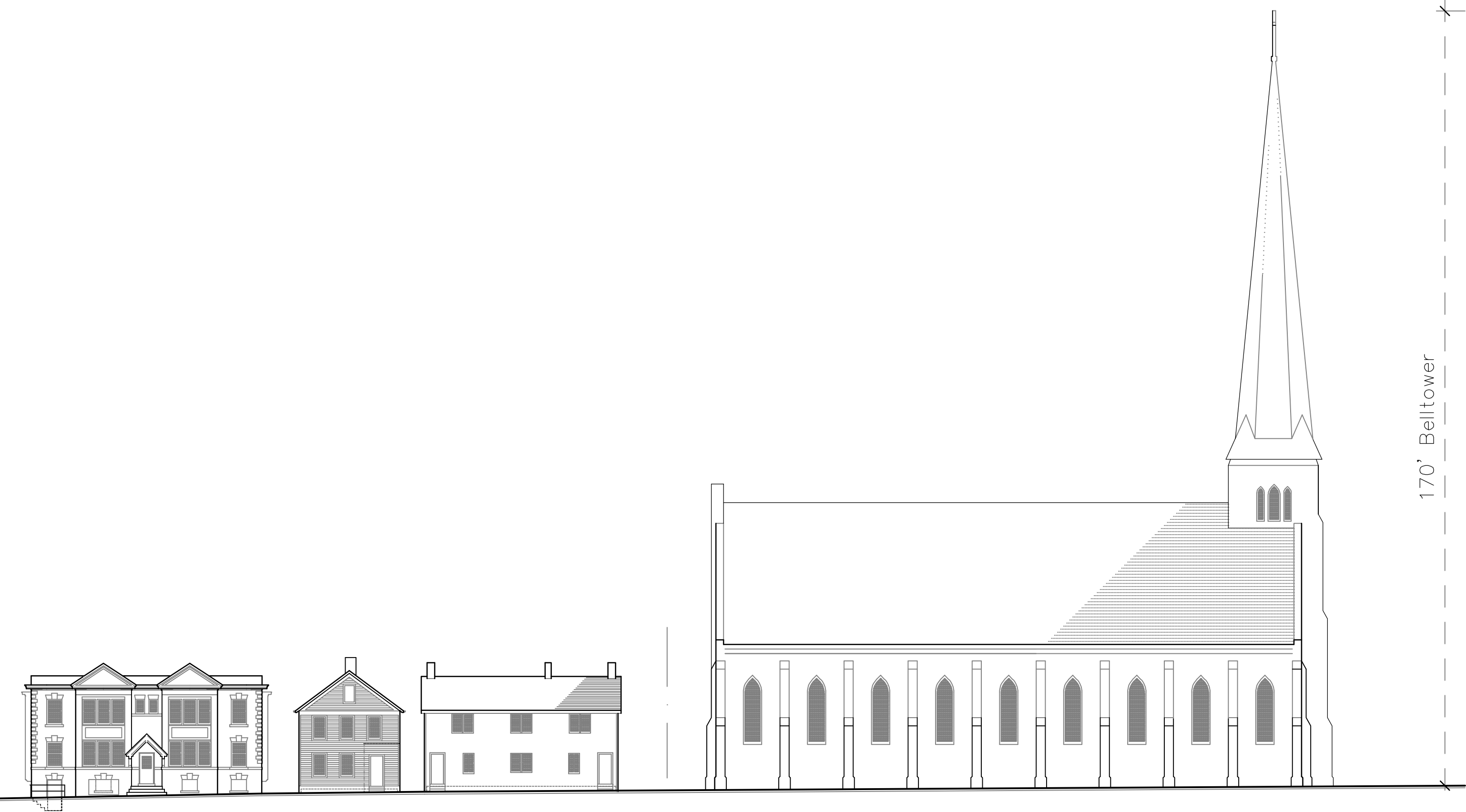
IN-PROGRESS  
DOCUMENT  
NOT FOR  
CONSTRUCTION

**Labrosse Place, Inc.**  
1450 Sixth St., Apt. C  
Detroit, Michigan 48226  
Timothy McKay, President  
General Site + Elevation Planning Information

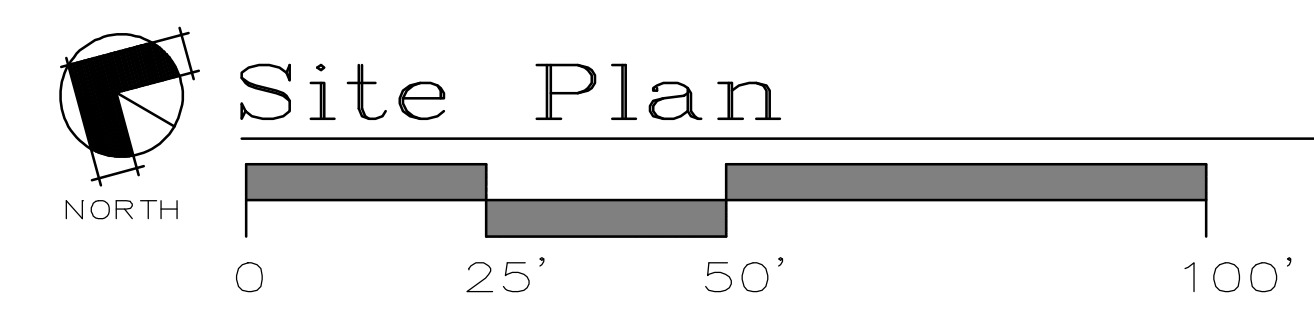
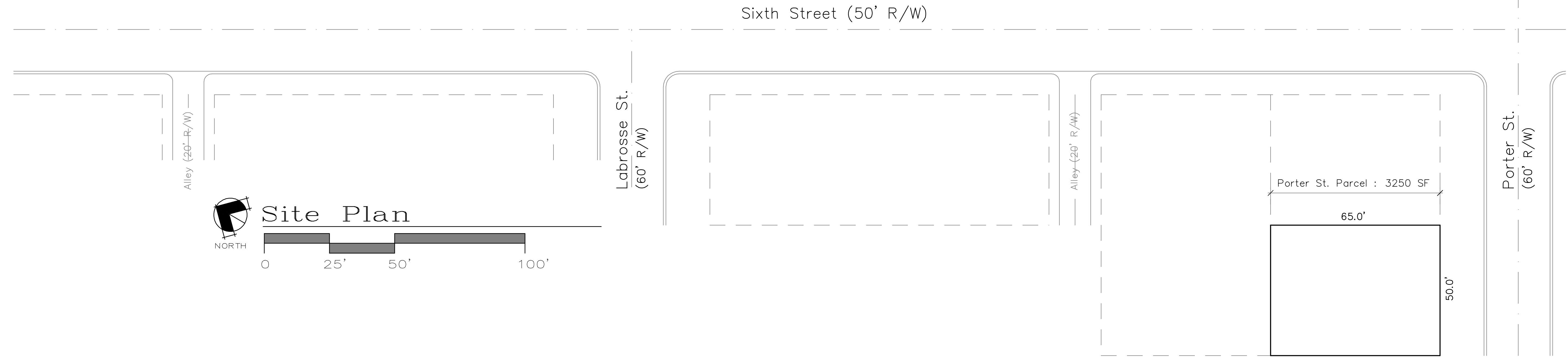
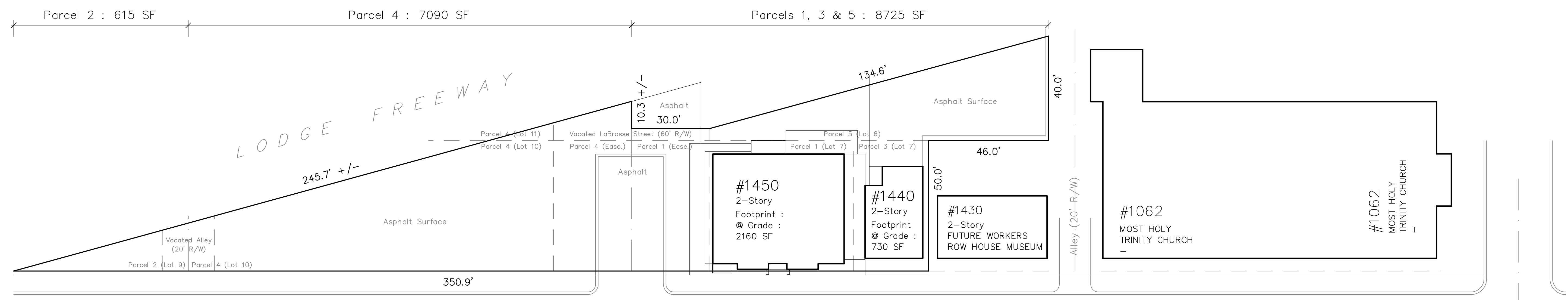
0251

10-24-02

1/3



6th Street – Partial West Elevation



Site Plan