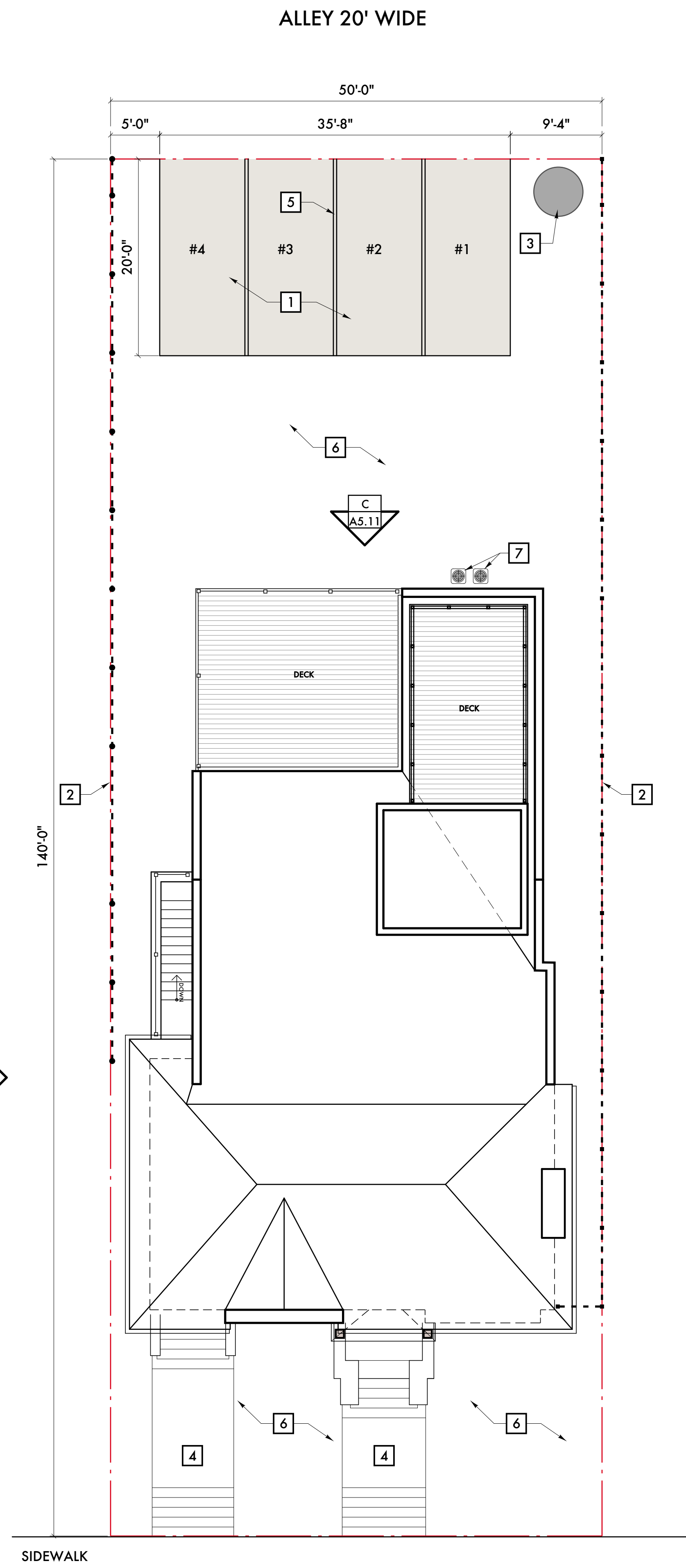


**KEYED NOTES:**

- 1 CONCRETE PARKING LOT - MINIMUM 4" CONCRETE, 3,000 PSI CONCRETE W/ WWF ON MINIMUM 6" COMPACTED 21AA SUB-BASE
- 2 NEIGHBORS WOOD FENCE TO REMAIN
- 3 DUMPSTER AREA
- 4 CONCRETE SIDEWALK, STEPS AND PORCH FLOOR, REPLACE DAMAGED AREAS, 4" THICK CONCRETE, 3,000 PSI, ON COMPACTED SAND/GRAVEL BASE
- 5 2" WIDE PAINTED PARKING STRIPE, YELLOW
- 6 GRADE LANDSCAPE AREA, MINIMUM 2" TOPSOIL AND RE-SEED W/ GRASS
- 7 CONDENSERS ON CONCRETE PAD



01 18 22      Historic Commission

Date:      Issued For:

**Elliot Renovation**

296 Elliot  
Detroit, Michigan 48201

**studioONE : DETROIT**

architectural  
urban  
interior      DESIGN

350 Madison Avenue      Detroit, Michigan 48226  
4th Floor      313 549 2790 (p)  
http://www.studioonedetroit.com      jpb@warehouse.com

Project Number: -

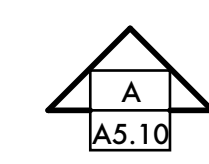
Sheet Title:

**PROPOSED SITE PLAN**

Sheet Number:

**A2.10**

© 2021 studioONE, llc



**1 SITE PLAN**

1/8" = 1'-0"

