



BUILDING INFORMATION

BUILDING 1: APARTMENTS

AREA: 41,317 SF
 CONSTRUCTION:
 COMMERCIAL
 WOOD FRAME
 TYPE VA
 4 STORY
 UNITS:
 STUDIOS = 23
 1 BED = 27
 TOTAL = 50

BUILDING 2: TOWNHOMES

AREA: 8,833 SF
 CONSTRUCTION:
 RESIDENTIAL
 WOOD FRAME
 4 STORY
 UNITS: 4

**TOTAL OVERALL AREA =
 50,150 SF**

TABLE OF CONTENTS

NO.	SHEET
01	SITE PLAN / FIRST LEVEL PLAN
02	FLOOR PLAN - LEVEL 02
03	FLOOR PLAN - LEVEL 03
04	FLOOR PLAN - LEVEL 04
05	ENLARGED UNIT PLANS
05.1	ENLARGED UNIT PLANS - CONTINUED
05.2	TOWNHOME PLANS - LEVEL 1 AND 2
05.3	TOWNHOME PLANS - LEVEL 3 AND 4
06	SITE CONTEXT
07	EXTERIOR ELEVATIONS
08	EXTERIOR ELEVATIONS
09	EXTERIOR STREET LEVEL PERSPECTIVES
010	PERSPECTIVES
011	CONTEXT PERSPECTIVES
012	EXTERIOR FINISHES

THE COE AT WEST VILLAGE - PHASE II

TITLE SHEET AND PERSPECTIVE

ISSUED: 02.16.22

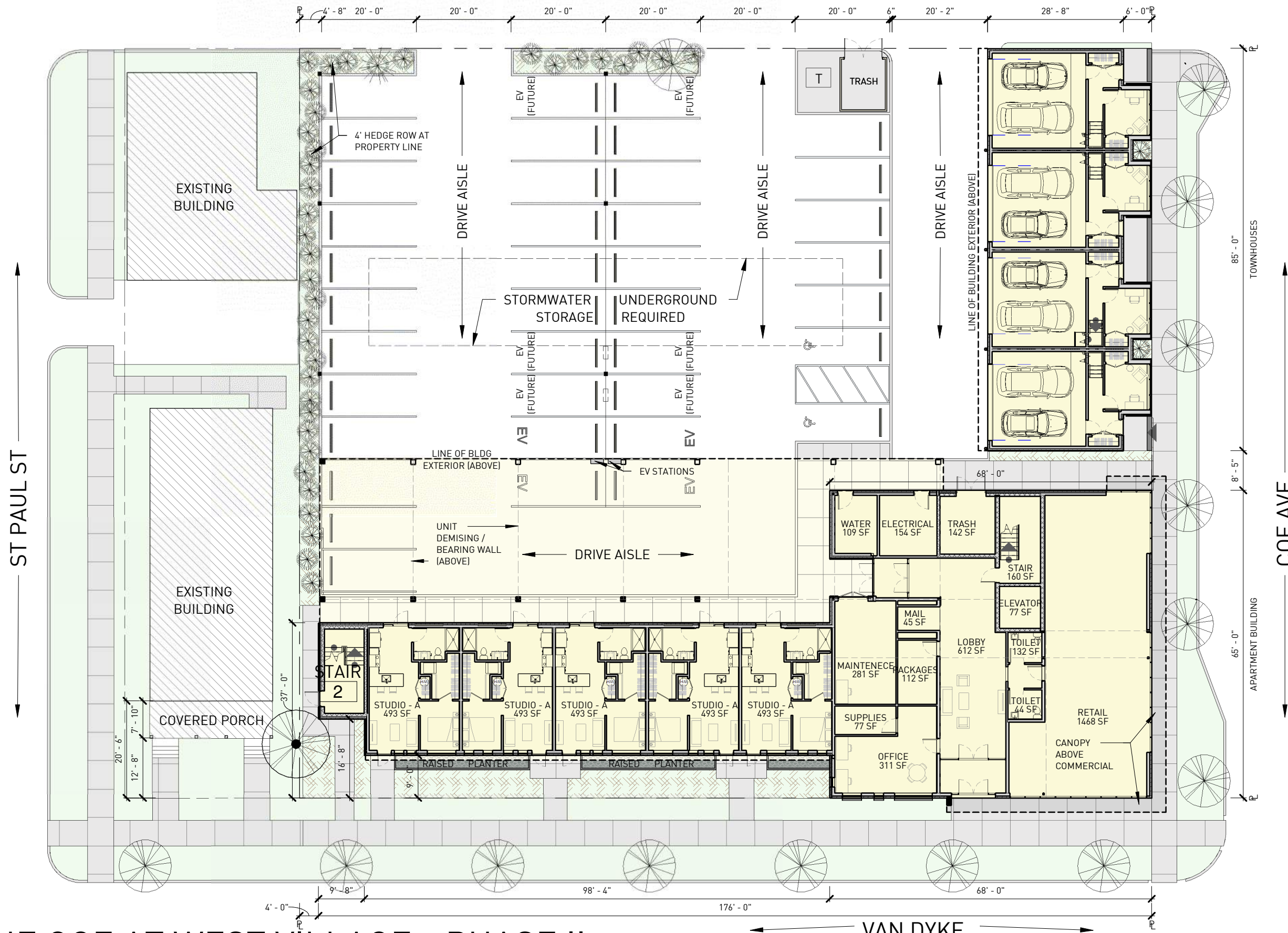
BUILDING 1: APARTMENTS
 AREA: 41,317 SF
 UNITS:
 STUDIOS = 23
 1 BED = 27
 TOTAL = 50

BUILDING 2: TOWNHOMES
 AREA: 8,833 SF
 UNITS: 4

TOTAL OVERALL AREA = 50,150 SF

ZONING: R5

PARKING:
 OFF STREET
 PARKING SPACES = 39
 TOWNHOMES = 8



THE COE AT WEST VILLAGE - PHASE II

SITE PLAN / FIRST LEVEL PLAN

ISSUED: 02.16.22

**TOTALS FOR LEVEL 02-04
UNITS PER FLOOR:**

STUDIOS =	6
1 BED =	9
TOTAL =	15



THE COE AT WEST VILLAGE - PHASE II

FLOOR PLAN - LEVEL 02

ISSUED: 02.16.22

TOTALS FOR LEVEL 02-04
UNITS PER FLOOR:

STUDIOS =	6
1 BED =	9
TOTAL =	15



THE COE AT WEST VILLAGE - PHASE II

FLOOR PLAN - LEVEL 03

ISSUED: 02.16.22

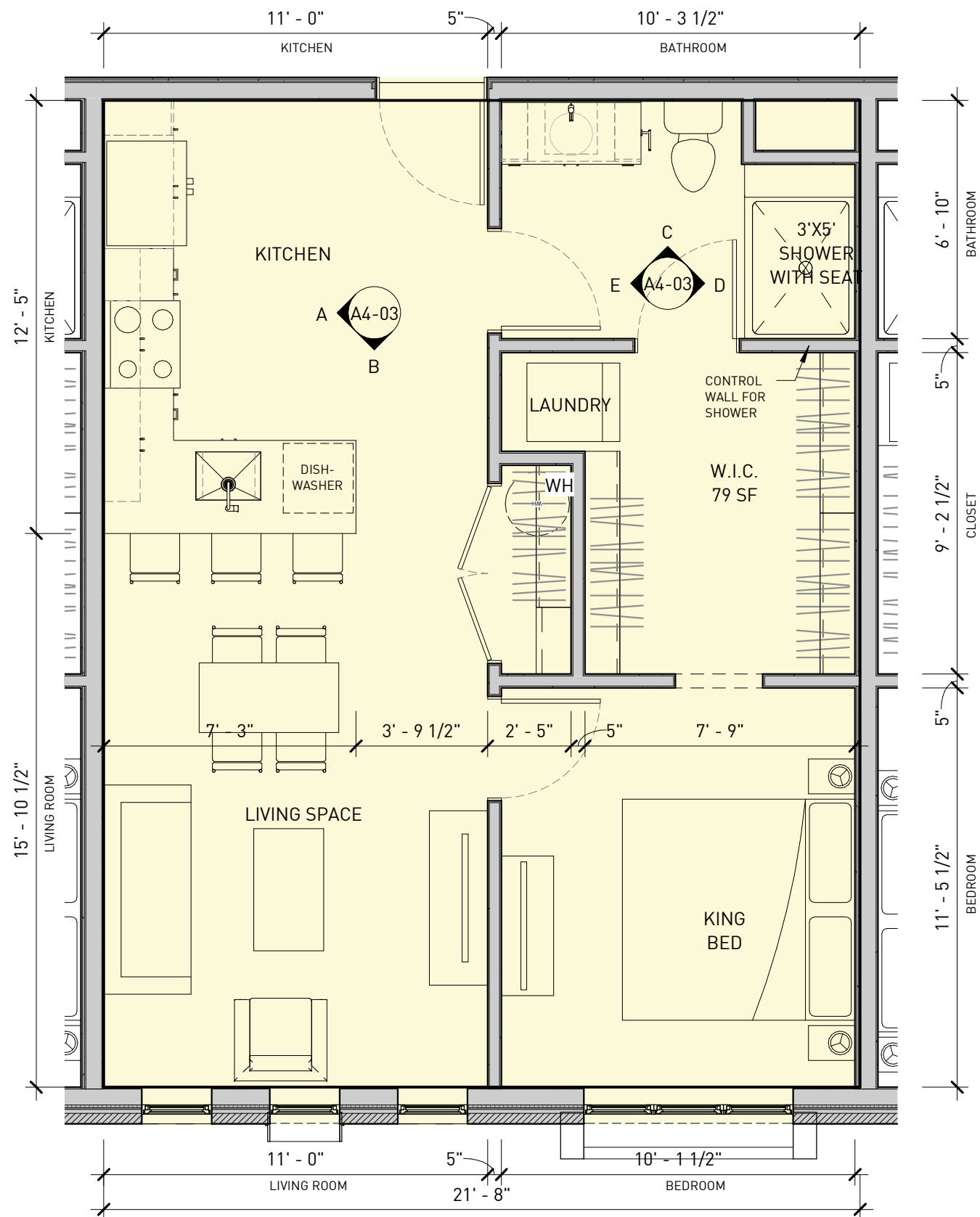
TOTALS FOR LEVEL 02-04
UNITS PER FLOOR:

STUDIOS =	6
1 BED =	9
TOTAL =	15

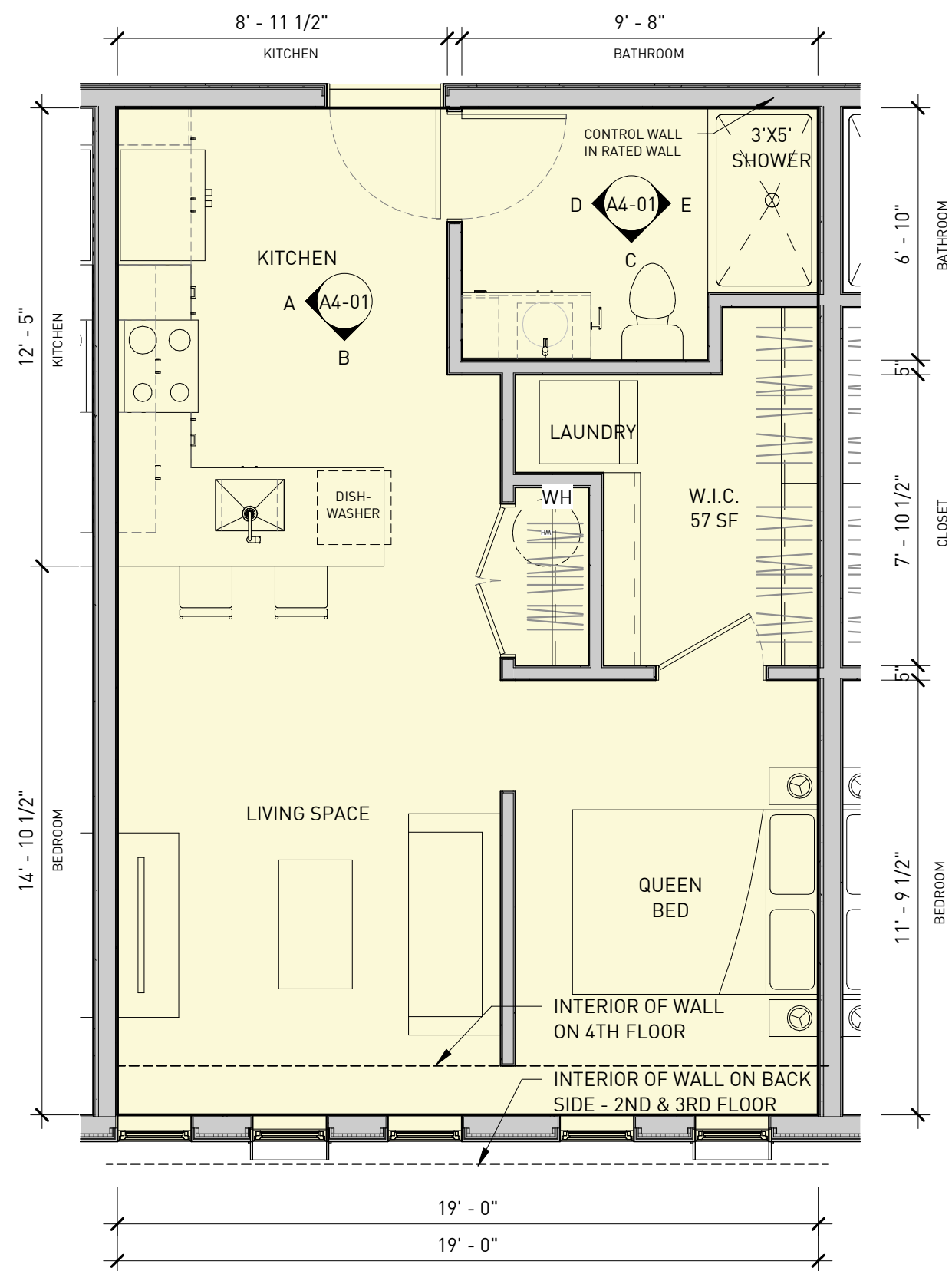


THE COE AT WEST VILLAGE - PHASE II

FLOOR PLAN - LEVEL 04
ISSUED: 02.16.22



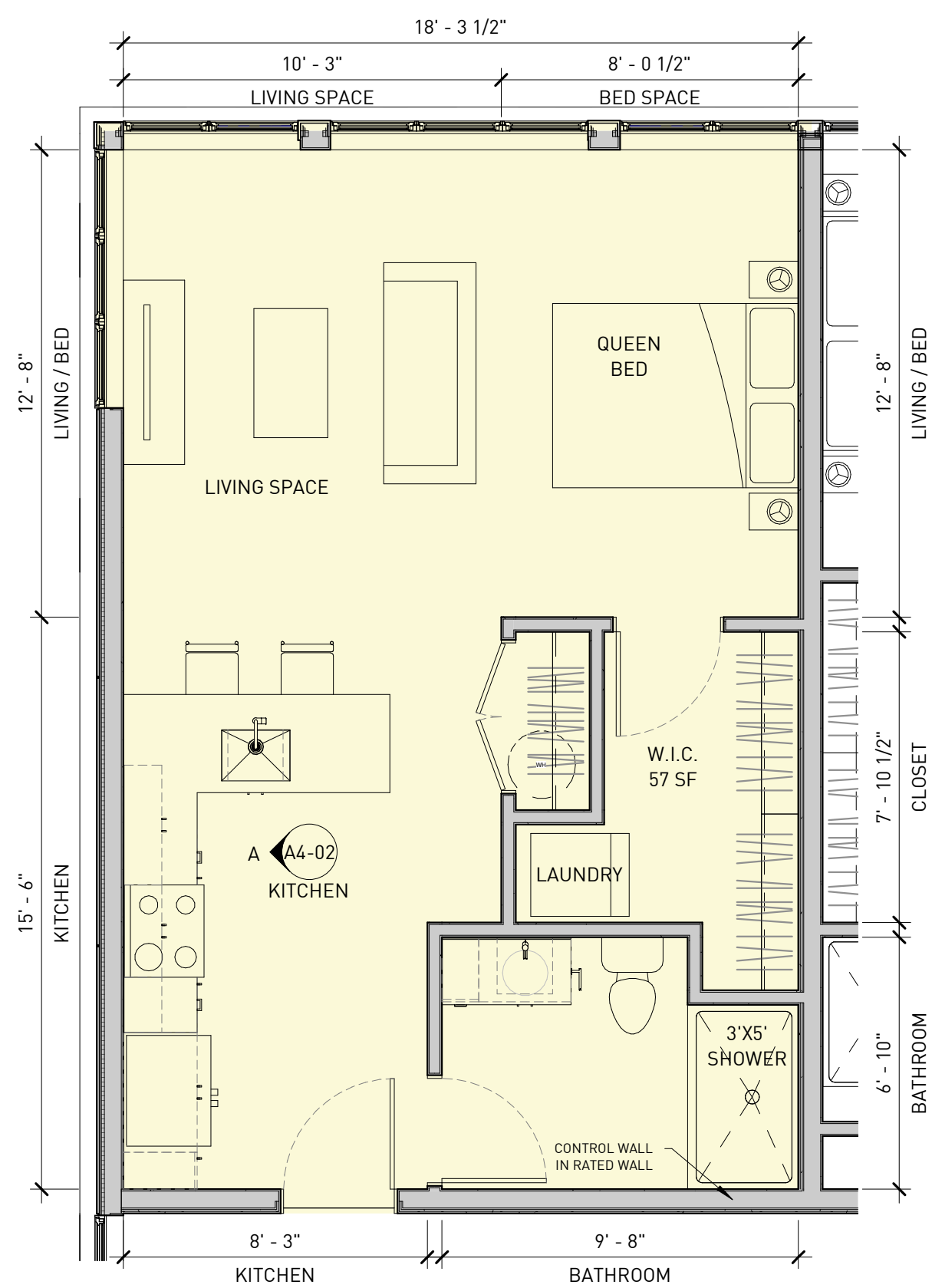
2 1 BED - TYP UNIT



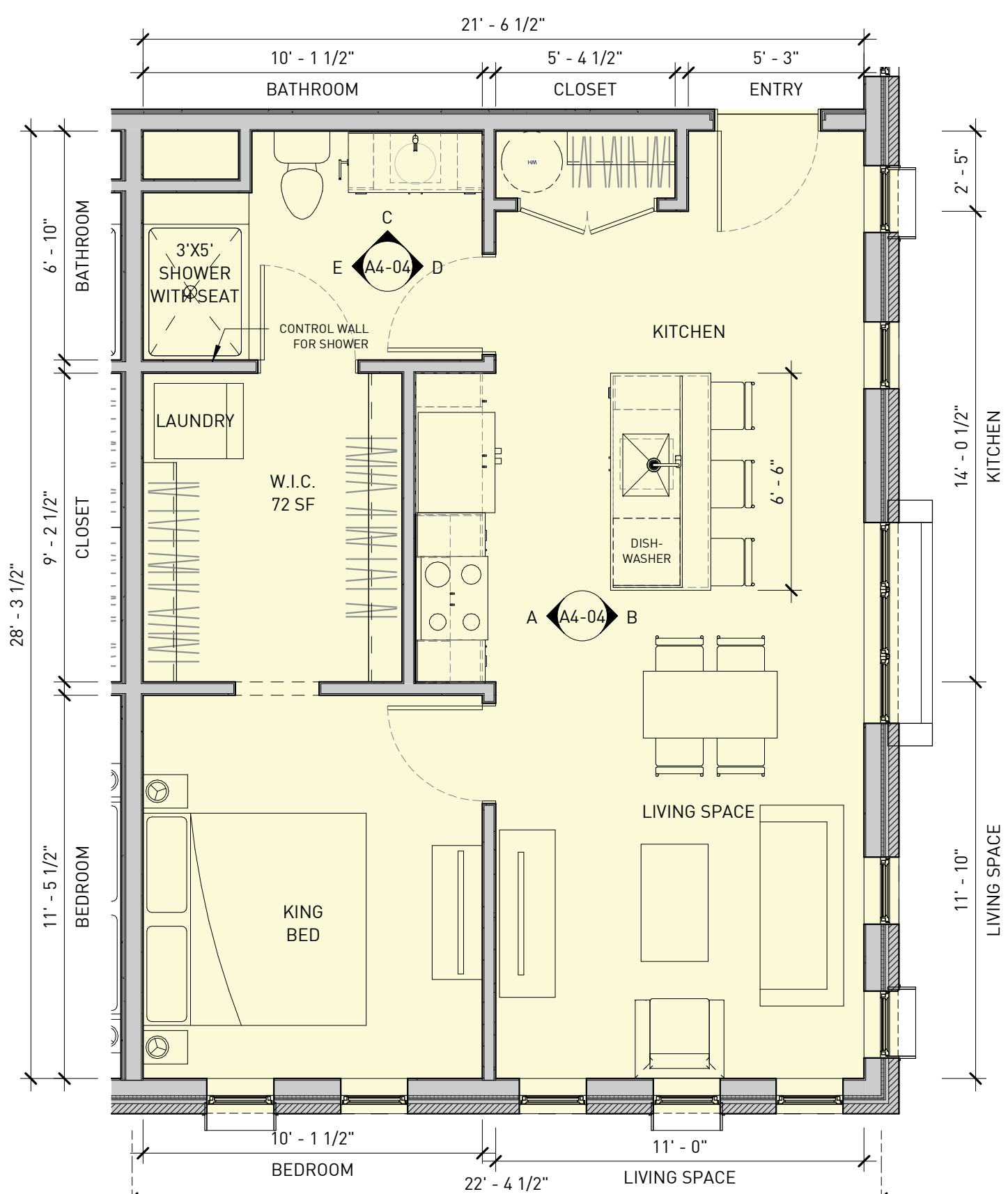
1 STUDIO - TYP. UNIT

THE COE AT WEST VILLAGE - PHASE II

ENLARGED UNIT PLANS
ISSUED: 02.16.22



2 STUDIO - 4TH FLOOR - TOTAL OF 1 UNIT



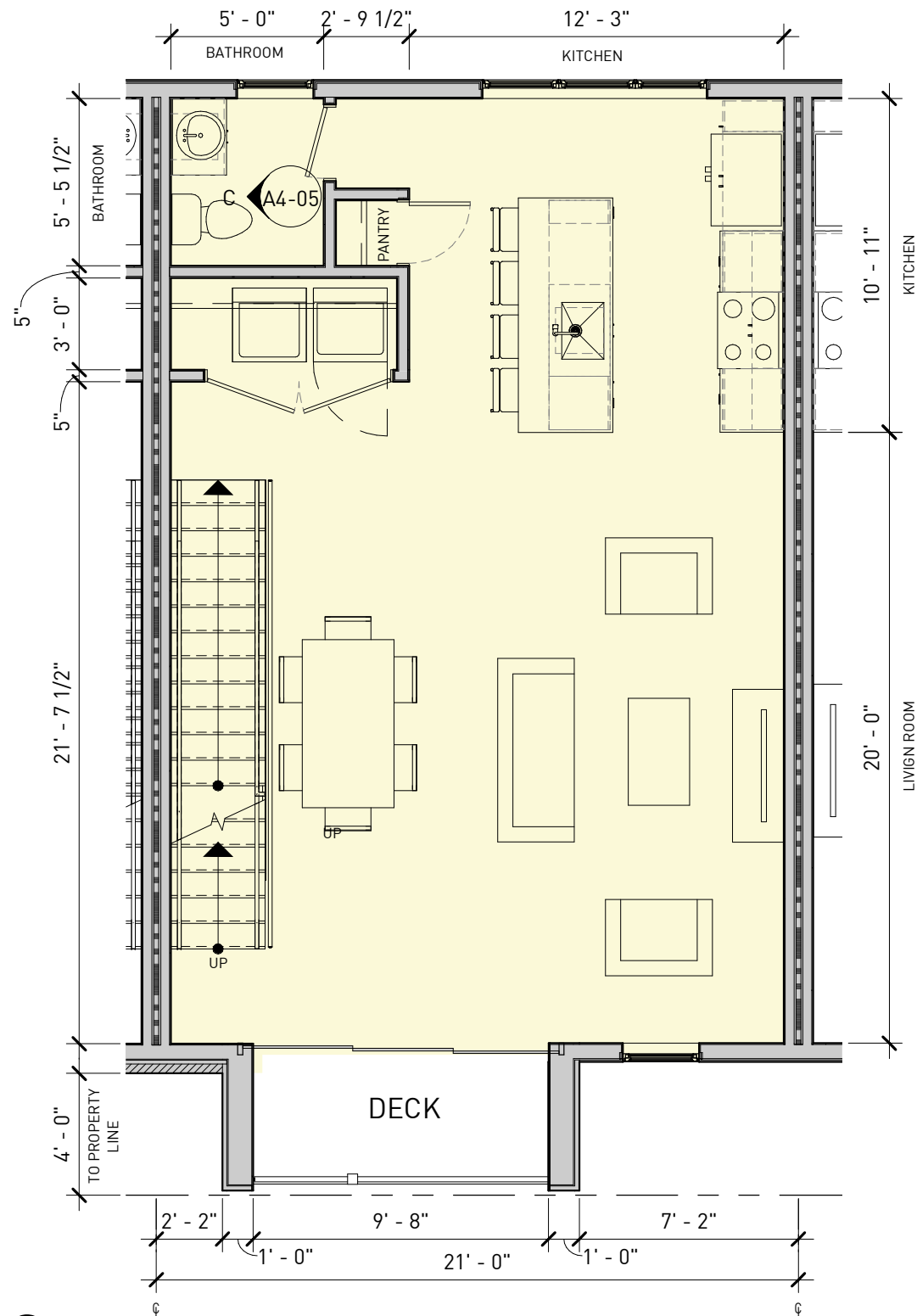
1 1 BED CORNER UNITS - TOTAL OF 6

THE COE AT WEST VILLAGE - PHASE II

ENLARGED UNIT PLANS - CONTINUED

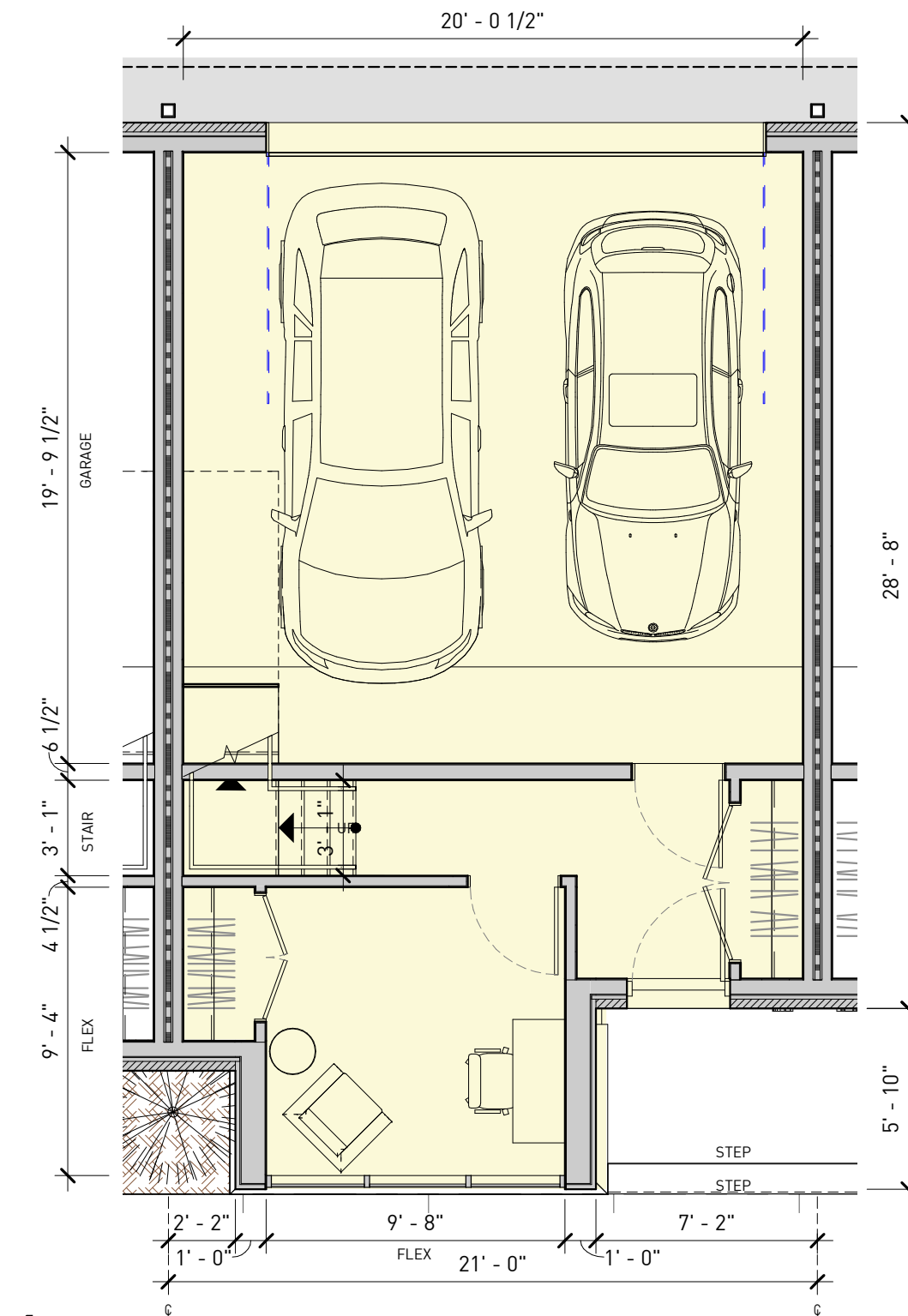
ISSUED: 02.16.22

AREAS:
 TOTAL UNIT AREA:
 SALES = 1,746 SF
 GARAGE = 431 SF
 TOTAL = 2,177 SF



2 TOWNHOME TYP UNIT - 2ND FLOOR PLAN

AREA = 673 SF



1 TOWNHOME TYP UNIT - 1ST FLOOR PLAN

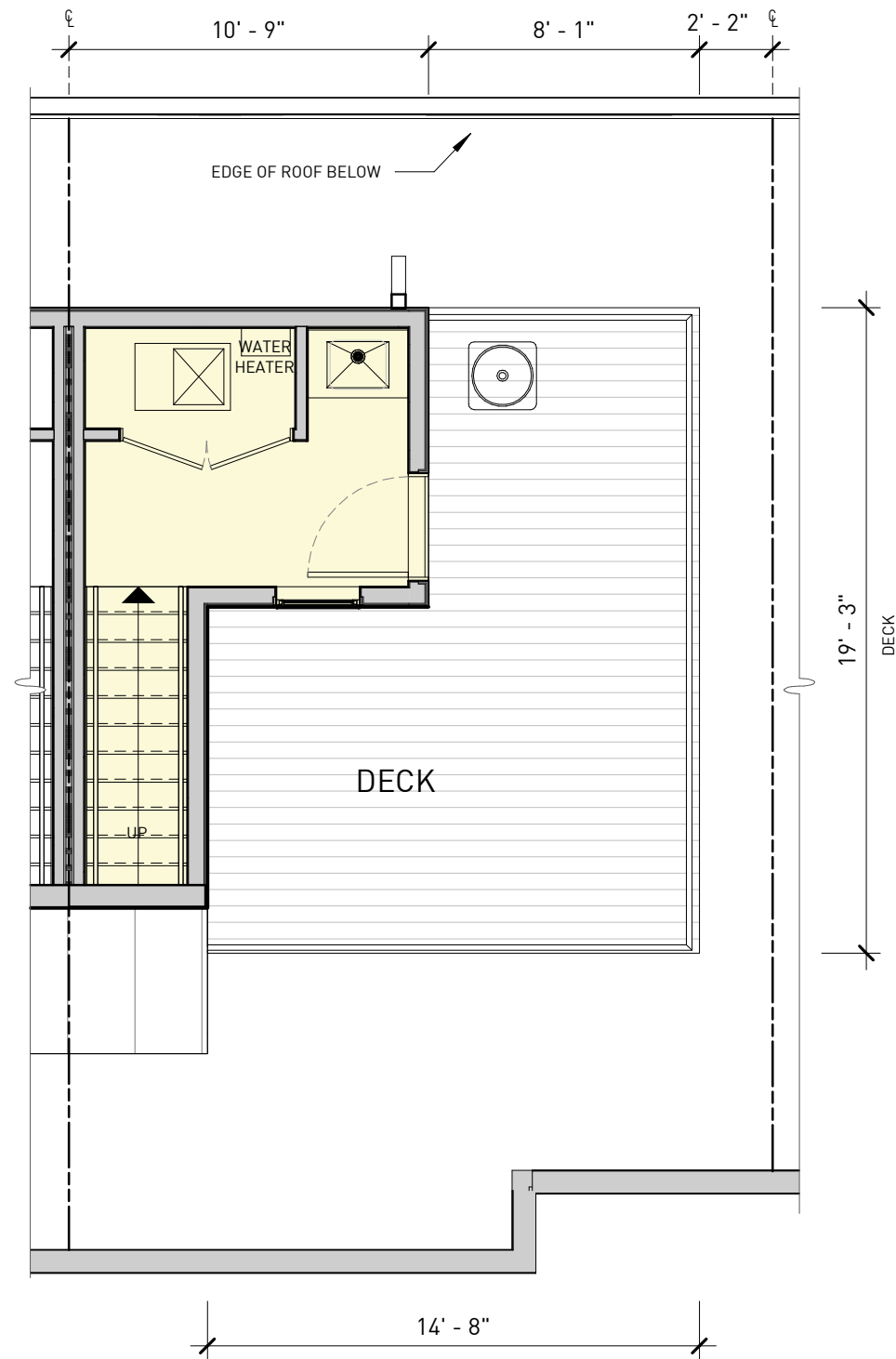
AREA = 668 SF TOTAL. GARAGE = 431 SF. SALES AREA = 237

THE COE AT WEST VILLAGE - PHASE II

TOWNHOME PLANS - LEVEL 1 AND 2

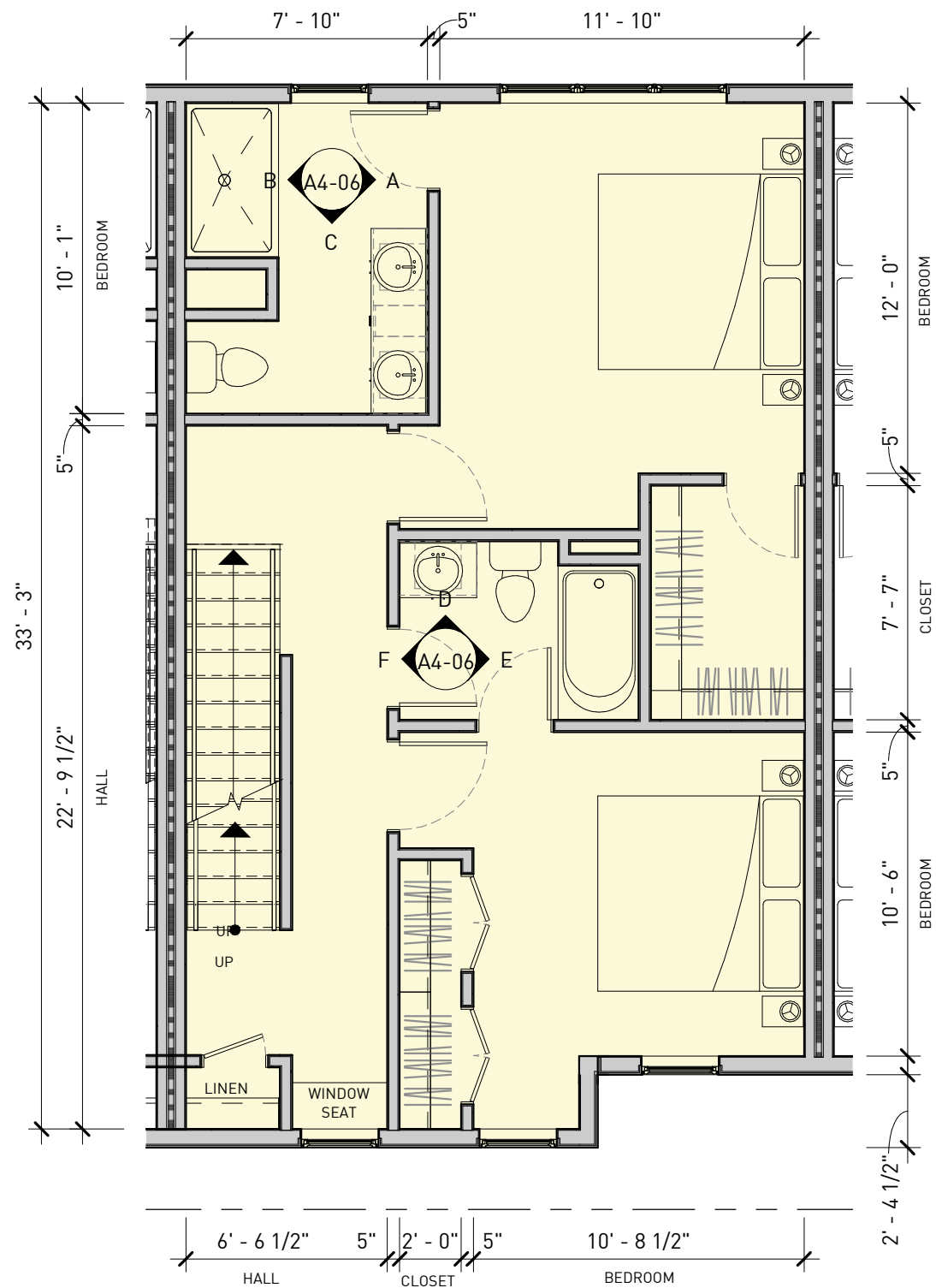
ISSUED: 02.16.22

AREAS:
 TOTAL UNIT AREA:
 SALES = 1,746 SF
 GARAGE = 431 SF
 TOTAL = 2,177 SF



2 TOWNHOME TYP UNIT - 4TH FLOOR PLAN

AREA = 130 SF



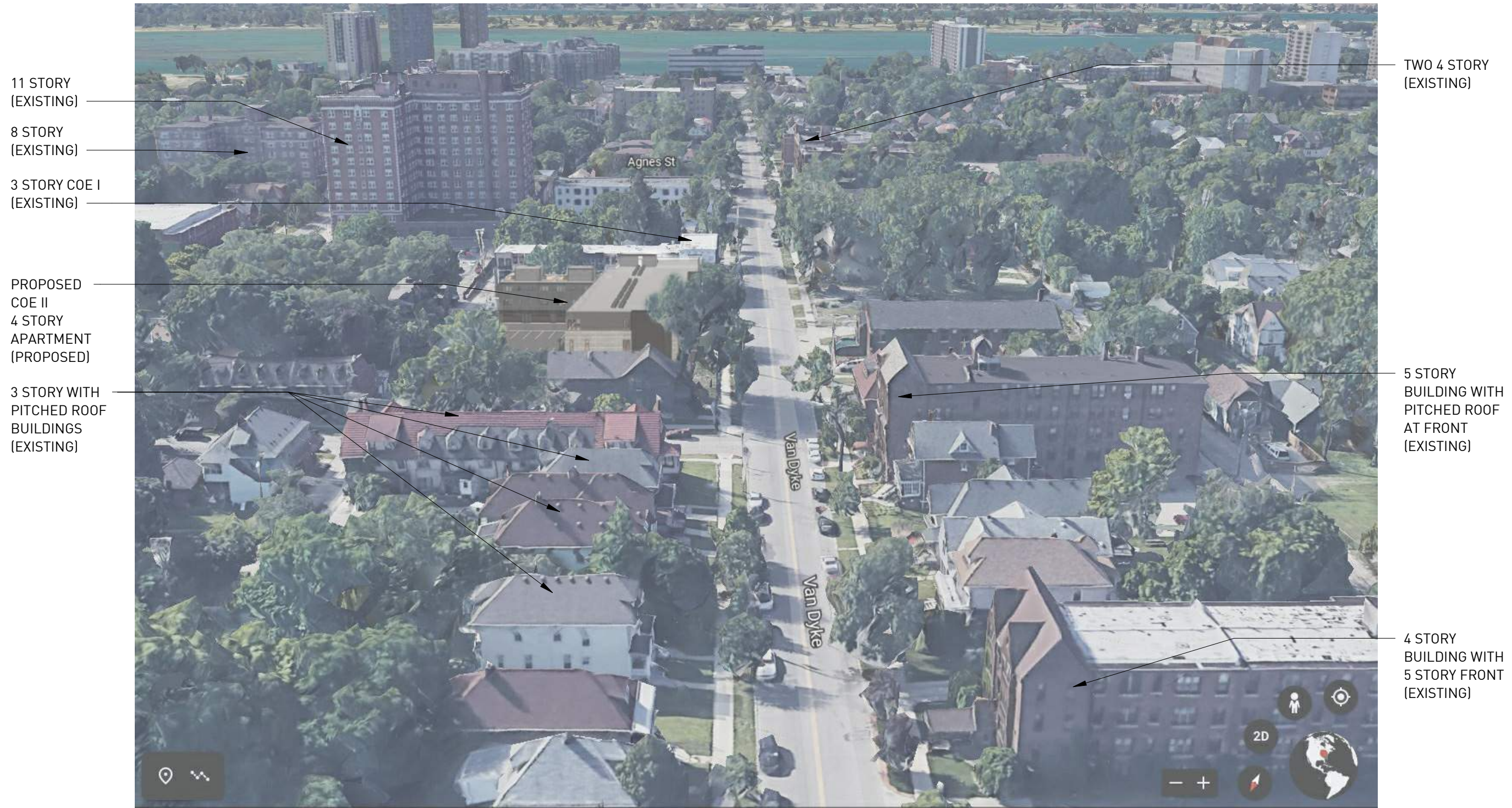
1 TOWNHOME TYP UNIT - 3RD FLOOR PLAN

AREA = 707 SF

THE COE AT WEST VILLAGE - PHASE II

TOWNHOME PLANS - LEVEL 3 AND 4

ISSUED: 02.16.22



THE COE AT WEST VILLAGE - PHASE II

SITE CONTEXT
ISSUED: 02.16.22



1 SOUTH ELEVATION



2 COE AVENUE ELEVATION-

KEY NOTES

- A01 RAISED PLANTER
- A02 STAIR / ELEVATOR CORE / ROOF ACCESS (BEYOND)
- A03 CANTILEVER LEVELS 3 AND 4 1'-0" FROM 1ST FLOOR
- A04 CEDAR SIDING (SAME AS BUILDING) PROTRUDED SURROUND TO MATCH COE 1.
- E01 METAL CAP (TYPICAL)
- E02 BLACK MASONRY BRICK MATCHING COE 1
- E03 FIBER CEMENT SPANDREL / PARAPET PANEL
- E04 CEDAR SHIP-LAP SIDING (STAINED) TO MATCH CORNER BUILDING / COE 1 AND TOWNHOUSES
- E05 WINDOWS WITH FRAMED ACCOYA WOOD (STAINED) SURROUND
- E06 BLACK METEAL CANOPY - MATCH COE 1
- E07 PRE-FINISHED FIBER CEMENT "LAP" SIDING (JAMES-HARDIE OR EQUAL) - NO CORNER BOARDS
- E08 VINYL WINDOWS, COLOR TO MATCH COE 1
- E09 FIXED STOREFRONT GLASS TO MATCH COE 1 TOWNHOUSES
- E10 WINDOWS WITH FRAMED WITH 1/4" ALUM. SURROUND EXTRUDED FRAME.
- E12 ACM COLUMN SURROUND OVER STEEL COLUMNS.

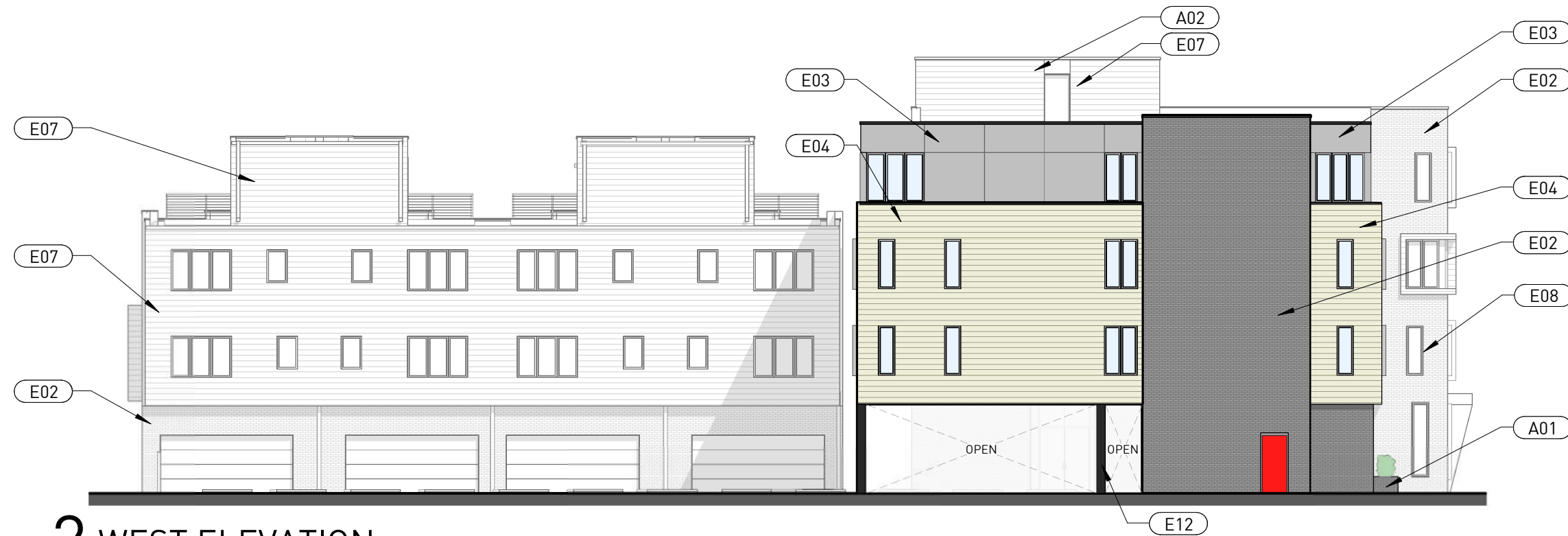
THE COE AT WEST VILLAGE - PHASE II

EXTERIOR ELEVATIONS
ISSUED: 02.16.22

GRAPHICAL NOTE: AREAS NOT DEPICTED IN COLOR ARE LOCATED SIGNIFICANTLY IN THE BACKGROUND.



1 NORTH ELEVATION



2 WEST ELEVATION

KEY NOTES

- A01 RAISED PLANTER
- A02 STAIR / ELEVATOR CORE / ROOF ACCESS (BEYOND)
- A04 CEDAR SIDING (SAME AS BUILDING) PROTRUDED SURROUND TO MATCH COE 1.
- E01 METAL CAP (TYPICAL)
- E02 BLACK MASONRY BRICK MATCHING COE 1
- E03 FIBER CEMENT SPANDREL / PARAPET PANEL
- E04 CEDAR SHIP-LAP SIDING (STAINED) TO MATCH CORNER BUILDING / COE 1 AND TOWNHOUSES
- E06 BLACK METEAL CANOPY - MATCH COE 1
- E07 PRE-FINISHED FIBER CEMENT "LAP" SIDING (JAMES-HARDIE OR EQUAL) - NO CORNER BOARDS
- E08 VINYL WINDOWS, COLOR TO MATCH COE 1
- E10 WINDOWS WITH FRAMED WITH 1/4" ALUM. SURROUND EXTRUDED FRAME.
- E12 ACM COLUMN SURROUND OVER STEEL COLUMNS.

THE COE AT WEST VILLAGE - PHASE II

EXTERIOR ELEVATIONS
ISSUED: 02.16.22

GRAPHICAL NOTE: AREAS NOT DEPICTED IN COLOR ARE LOCATED SIGNIFICANTLY IN THE BACKGROUND.



1 VAN DYKE-PERSPECTIVE



2 CORNER OF VAN DYKE AND COE AVE-PERSPECTIVE



3 COE AVE-PERSPECTIVE



4 ALLEY-PERSPECTIVE

THE COE AT WEST VILLAGE - PHASE II

EXTERIOR STREET LEVEL PERSPECTIVES

ISSUED: 02.16.22

© CHRISTIAN HURTTIENNE ARCHITECTS 2111 WOODWARD AVE., #201 DETROIT, MI 48201 313.825.2005 CHA-C.COM



1 COE AVE VIEW



2 VAN DYKE FROM NORTH



3 COE AVE / REAR VIEW



4 VAN DYKE FROM SOUTH

THE COE AT WEST VILLAGE - PHASE II

PERSPECTIVES
ISSUED: 02.16.22



1 VAN DYKE FROM NORTH - CONTEXT



2 VAN DYKE FROM SOUTH - CONTEXT

THE COE AT WEST VILLAGE - PHASE II

CONTEXT PERSPECTIVES

ISSUED: 02.16.22

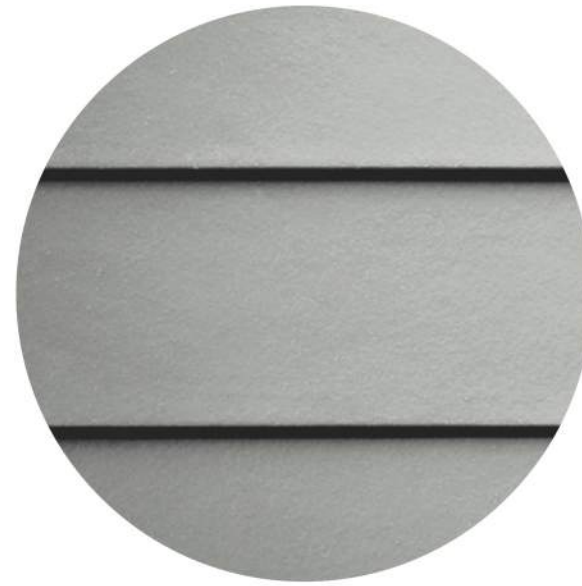
© CHRISTIAN HURTTIENNE ARCHITECTS 2111 WOODWARD AVE., #201 DETROIT, MI 48201 313.825.2005 CHA-C.COM



MASONRY VENEER
GLEN-GERY - "CRYSTAL BLACK"



FIBER CEMENT
LAP SIDING
JAMES HARDIE PLANK LAP SIDING -
"BOOTH BAY BLUE"



FIBER CEMENT
LAP SIDING
JAMES HARDIE PLANK LAP SIDING -
"LIGHT MIST"



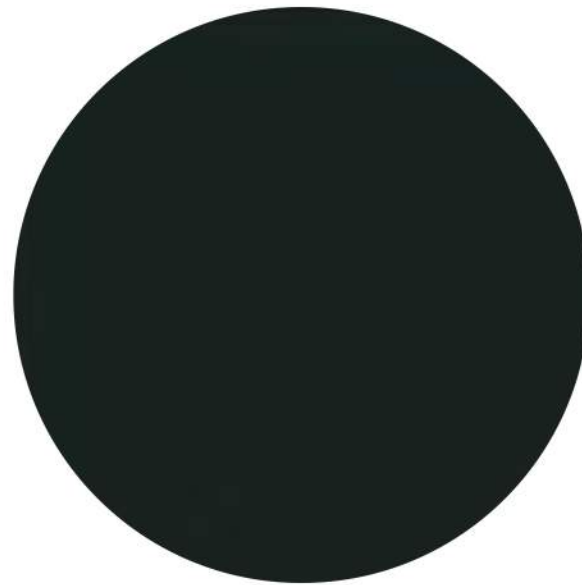
FIBER CEMENT
JAMES HARDIE - "AGED PEWTER"



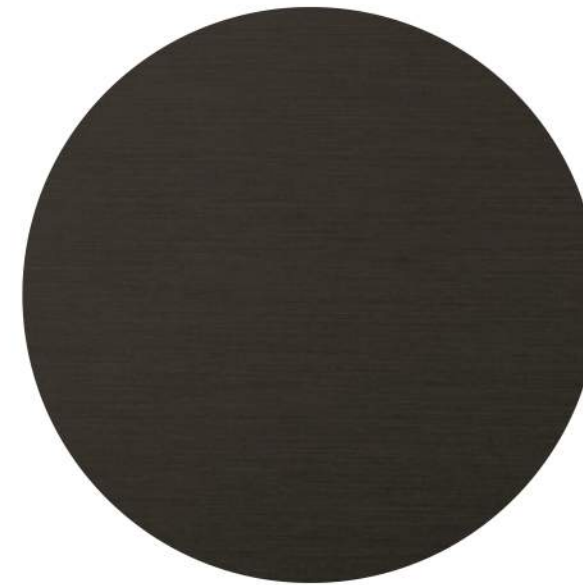
CEDAR SIDING
CLEAR COATED



ACCOYA WOOD SIDING
CLEAR COATED



VINYL WINDOW FRAME
JELD-WEN VINYL WINDOW - "BRONZE"



ALUMINIUM STOREFRONT
"BRONZE" FINISH

THE COE AT WEST VILLAGE - PHASE II

EXTERIOR FINISHES
ISSUED: 02.16.22