

studiozONE, llc

350 Madison, 4th Floor, Detroit, Michigan • www.studiozonedetroit.com • (313) 549-2790

1356/1364/1368 Labrosse Landscaping

Project Description:

The intent of the landscaping work is to remove landscaping which is damaging the house, not permitting repair work to occur in a safe manner and to clean-up the overgrown plant materials and remove invasive materials.

Proposed Work:

1. Remove the large Poplar tree which has entered the house foundation/crawlspace and has caused damage to the brick masonry walls
2. Keep the Crab Apple tree at the southwest corner of the house.
3. Cut the Rose of Sharon down to grade along the sidewalk between the house and the driveway at 1364 Labrosse to permit safe access for equipment to repair the brick, masonry façade. Leave the roots in place and allow the Rose of Sharon to grow back after masonry repairs are completed.
4. Keep the existing groundcover material along the sidewalk in front of the house
5. Remove the unsafe steps to the front house and replace with a temporary, wood stair at the front entrance for safe access to the house.
6. Remove the dead Cherry tree in the driveway at 1364 Labrosse
7. Remove the upright Yews which have encroached onto the driveway at 1364 Labrosse
8. Remove the dead Ash tree at the corner of 8th and Labrosse and trim back all dead and overhanging branches interfering with the sidewalk.
9. Remove the invasive "spray" or "weed" trees along 8th Street and continuing along the alley.
10. The black walnut at the rear of the property is to remain.

Black Walnut tree to remain

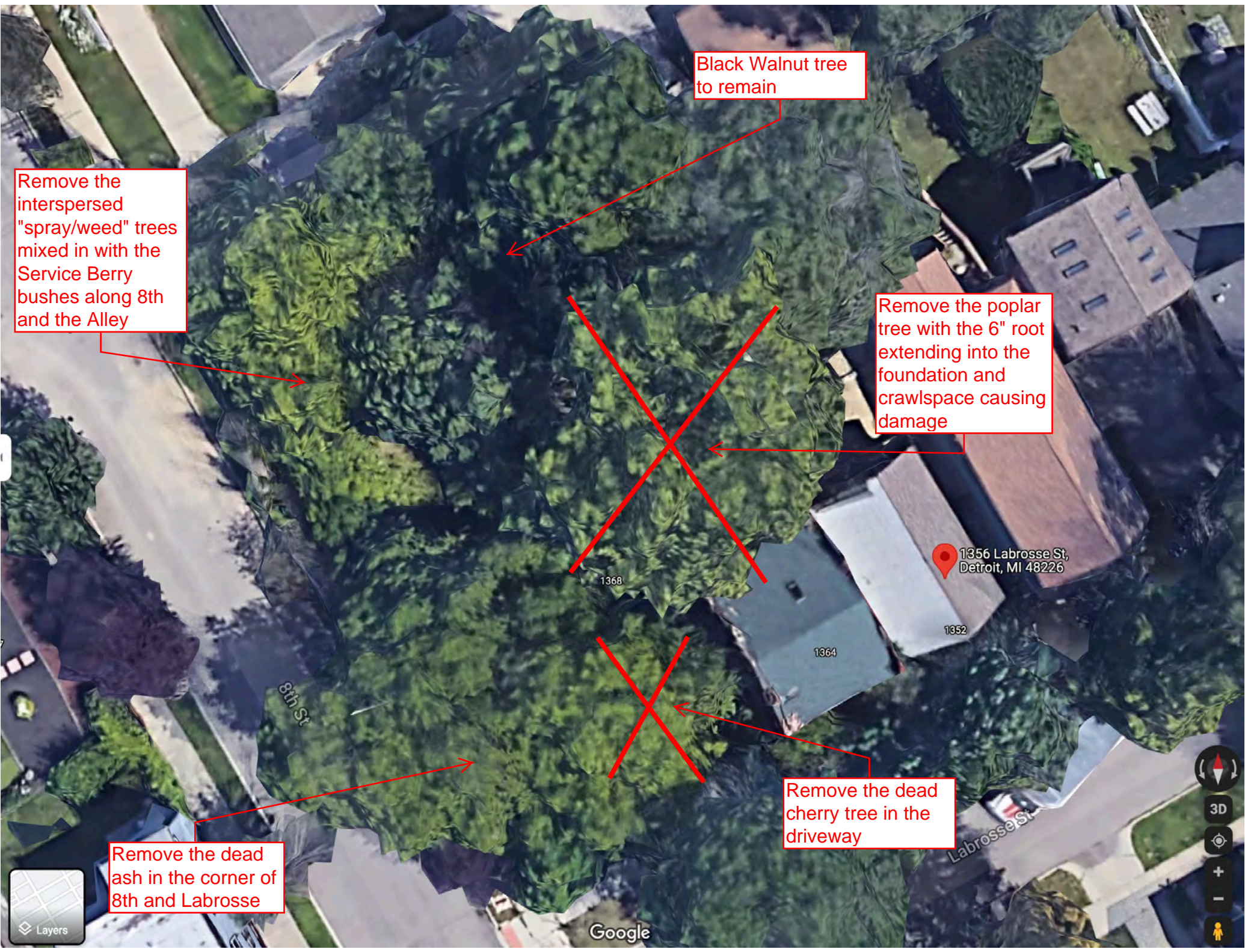
Remove the interspersed "spray/weed" trees mixed in with the Service Berry bushes along 8th and the Alley

Remove the poplar tree with the 6" root extending into the foundation and crawlspace causing damage

1356 Labrosse St, Detroit, MI 48226

Remove the dead cherry tree in the driveway

Remove the dead ash in the corner of 8th and Labrosse



Remove all the
invasive "spray"
trees



Service berries are
to remain

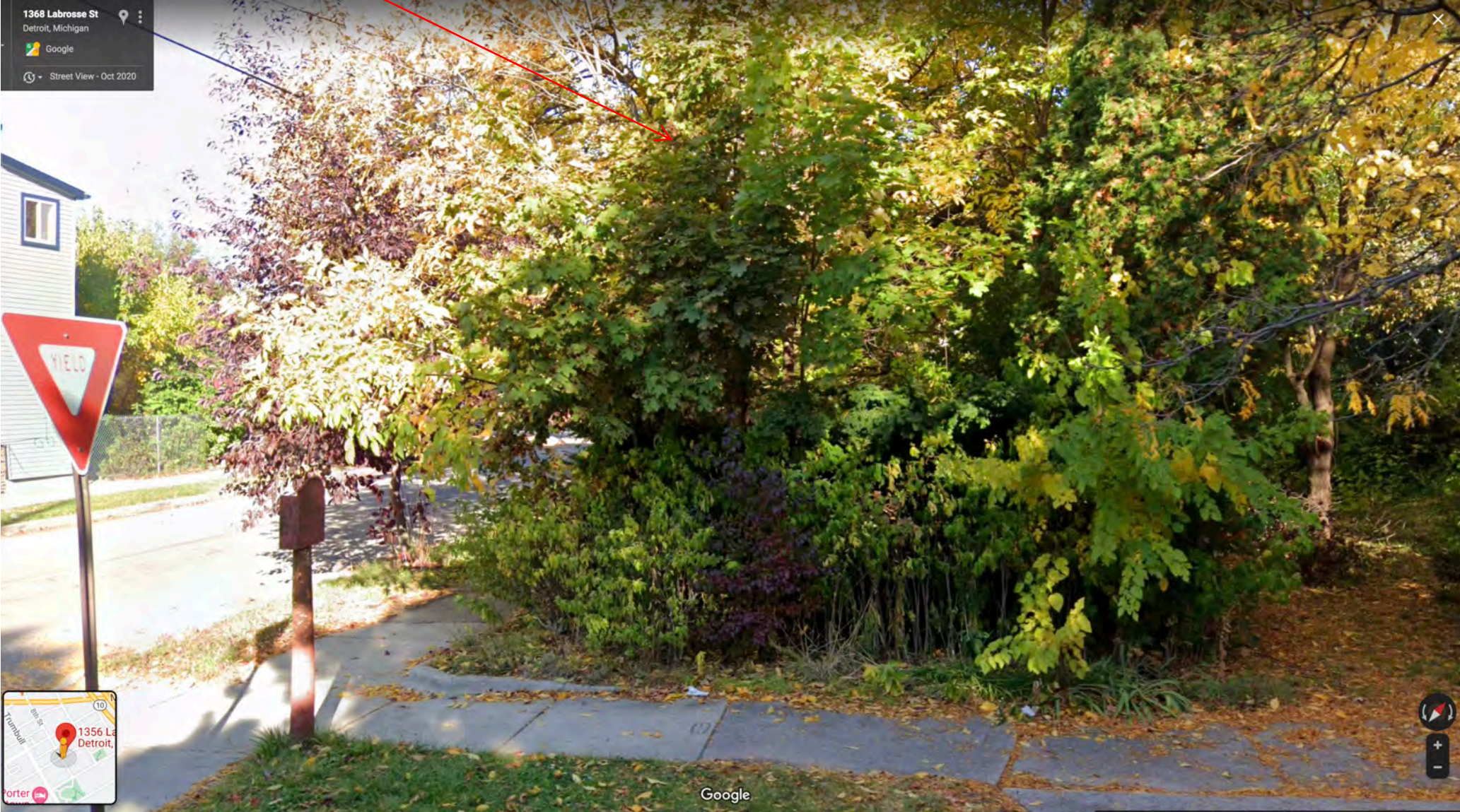
Trim back all
branches
interfering with the
sidewalk



Remove all invasive spray trees, the Service Berries are to remain



Remove this dead
Ash Tree at the
corner of 8th and
Labrosse



Remove the dead
Cherry tree in the
driveway

Remove the dead
Poplar tree
damaging the
house foundation

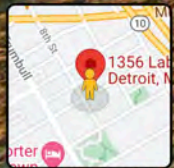
Existing Crab
Apple to remain



Remove the yew
which has
encroached on the
driveway

Trim all the Rose of
Sharon down to
grade, leave roots
to permit regrowth
after construction

1361 Labrosse St
Detroit, Michigan
Google
Street View - Oct 2020



Crab Apple to
Remain

Ground cover
materials to remain

Remove unsafe
steps and install,
temporary wood
porch