

Roosevelt Park

Historic District Commission Meeting

February 9, 2022



General Services
Department

Topics

About the Project

Park History and Existing Conditions

Community Engagement

Roosevelt Park Design Concept

About the Project



ROOSEVELT PARK

Project Overview

Roosevelt Park sits in the center of a vibrant and culturally diverse Detroit community. In the heart of southwest Detroit's Hubbard Richard and Corktown Neighborhoods, Roosevelt Park is most well-known as a green space next to the iconic Michigan Central Station.

The culmination of fifteen plus years of study and planning, the City of Detroit's General Services Department is now advancing a project that will unify the park's segmented land parcels and create a new 10-acre park. This redesigned public space will serve as both a neighborhood and regional park and will accommodate a mixture of uses for years to come.



Goals and Objectives



**Outcome from the Corktown
Neighborhood Framework Plan**



**Prioritize Surrounding
Communities**



Unify Roosevelt Park



**Respect Park's
History and Legacy**



**Create Iconic Park for the
Present and Future**



Budgeted Investment

- Phase 1 Investment will set the vision for the park
- \$4 Million investment will provide:
 - Road removal
 - Unify the Park
 - New walks
 - New plantings
 - Lighting



Project Timeline

GREATER CORKTOWN
FRAMEWORK STUDY

→ ROOSEVELT PARK
IMPLEMENTATION



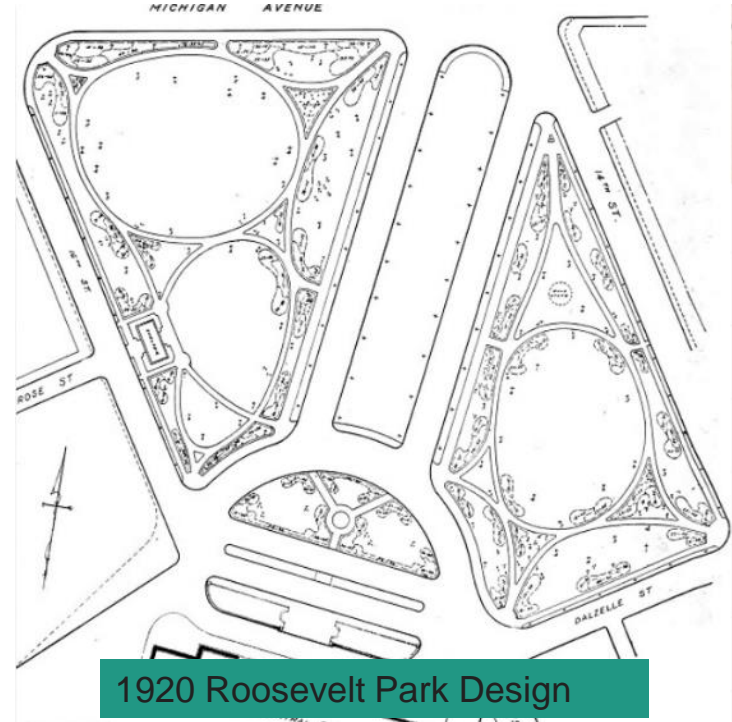
Park History & Existing Conditions



Park History and Legacy



1913 Concept Plan



1920 Roosevelt Park Design

Park History and Legacy

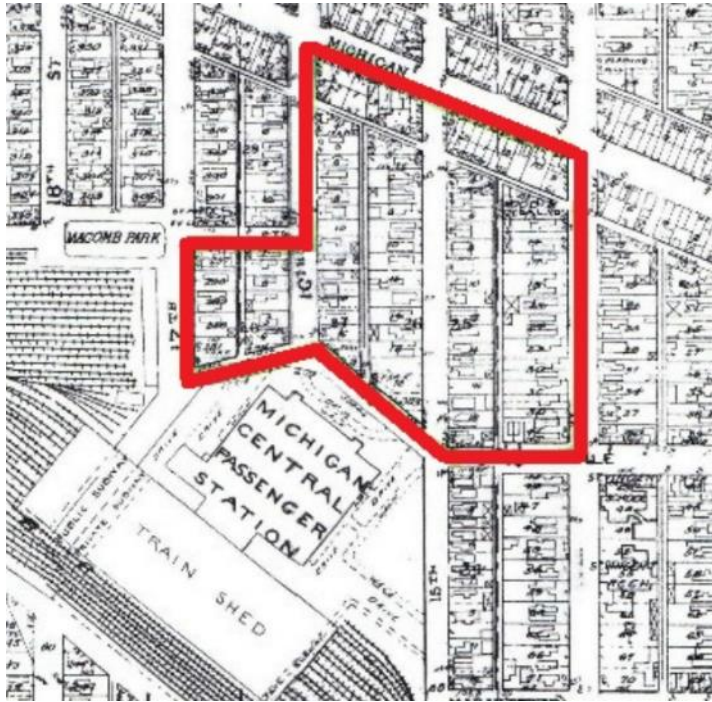


Event at Michigan Central Station



Roosevelt Park

Park History and Legacy



Corktown Historic District



**Roosevelt
Park**

**Corktown
Historic
District**



EXISTING CONDITIONS



HISTORIC REVIEW

Record Review and
SHPO Consultation



PHYSICAL INVENTORY

Park Condition Review



TREE CONDITION SURVEY

In-field Tree
Condition Assessment



Park Historical Review

Review based records on provided by City Housing and Revitalization Department.

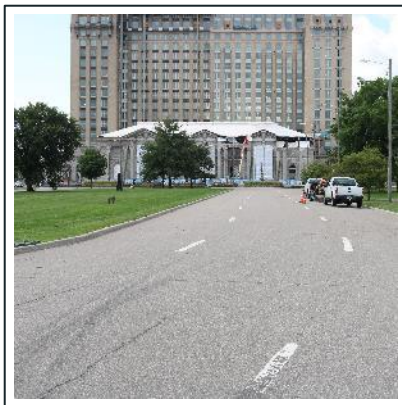
- Park Developed between 1913 and 1920. Park land comprised of former residential and commercial property acquired, purchased and ultimately condemned by the City in response to Michigan Central Station project.
- Park based on 1920 plan which created a broad park bisected by a one-block-length boulevard connecting the train station to Michigan Avenue. The boulevard is on axis with the train station main entry and points towards the present-day Detroit Institute of Arts
- The park was opened in 1921 and named for president Theodore Roosevelt.
- The Park went largely unchanged from the original 1920 construction aside from impacts from Michigan Avenue widening in 1938-1940.
- Remaining contributing historical resources include the vehicular circulation network, pedestrian circulation, trees and 17th Street Retaining Wall.



Contributing Resources



Trees
(1920-Present)

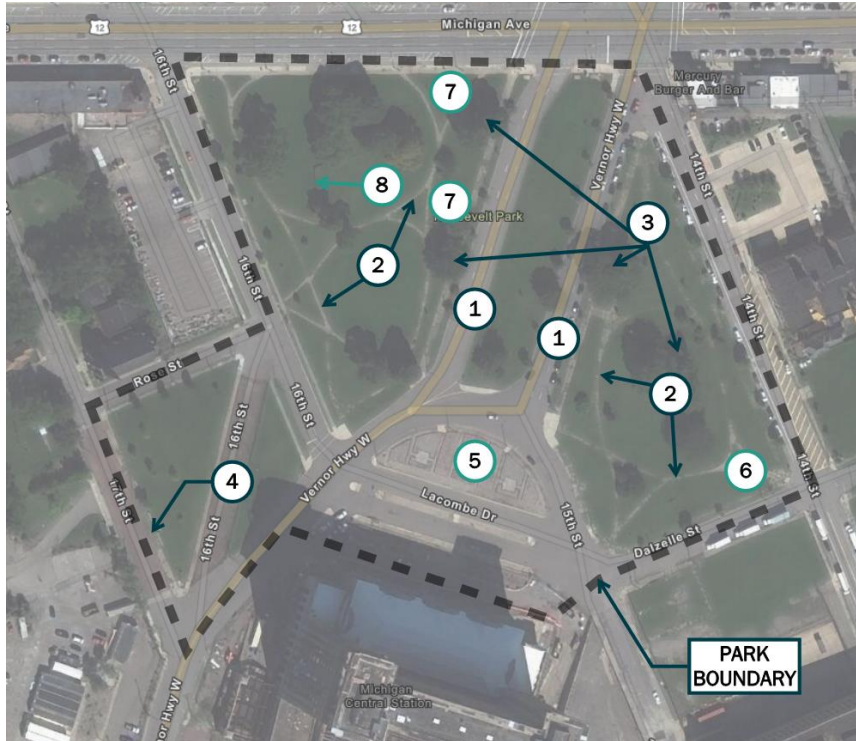


Vehicle and Ped.
Circulation
(1920-Present)



17th Street
Retaining Wall
(1914)

Contributing Resources



Contributing Resources

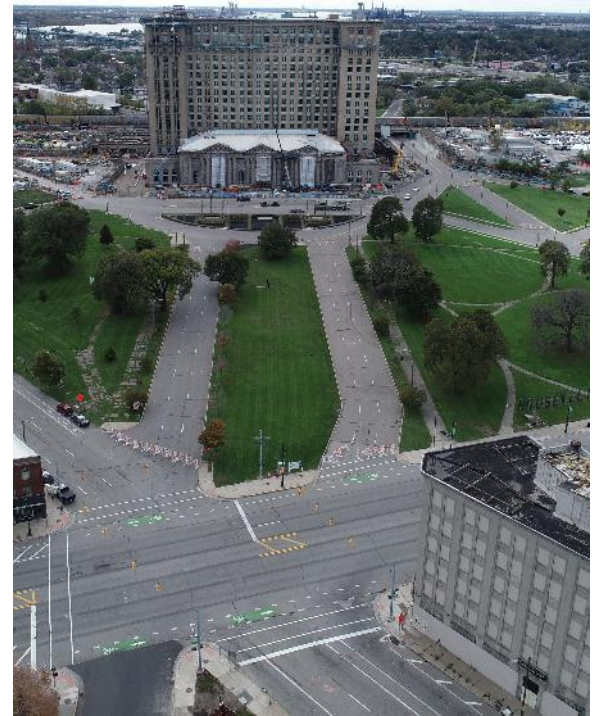
- ① Vehicular Circulation and boulevard
- ② Pedestrian Circulation network
- ③ Trees
- ④ Retaining Wall, Sixteenth Street

Noncontributing Resources

- ⑤ Gardens
- ⑥ Man in the City
- ⑦ Freestanding Letters
- ⑧ Retaining Wall, Steel

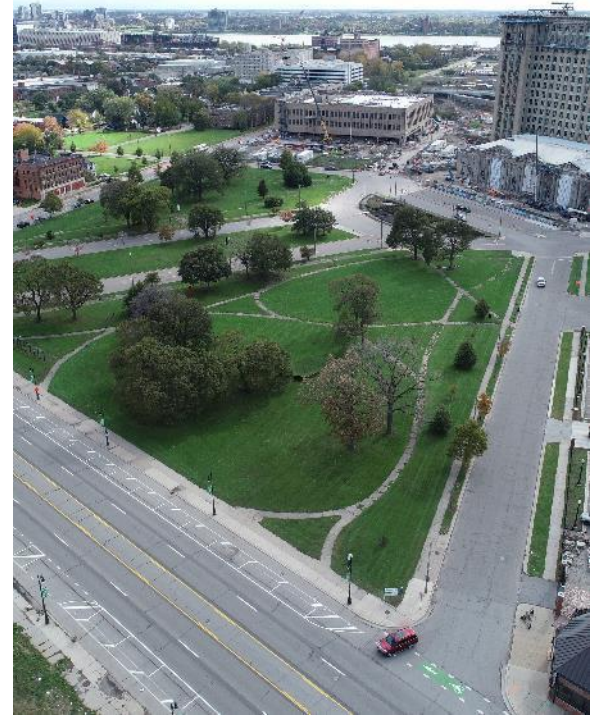
Vehicle circulation network and boulevard

- Vernor Highway centered upon, and oriented perpendicular to, the facade of Michigan Central Station, creating an open vista and view corridor as well as separating the park into two sections.
- Vernor Ave. is a divided boulevard with grassy median.
- The streets are poured and striped concrete. Curbs are originally sandstone, though many have been replaced with concrete.



Pedestrian circulation network

- Curvilinear paths divide the park's eastern and western portions into smaller grassy areas and provide pedestrian access to the interior areas of the park.
- Paths are poured concrete with joints. Other than the impacts of the 1938-1940 widening of Michigan Avenue, these paths remain largely unaltered from their original configuration.



Trees

- A 1920 landscape plan indicates dozens of trees as well as other vegetation, and historic photographs depict rows of American elms alongside Vernor Ave, and within the median.
- Many of these trees have since been replaced, at times with different species in different locations from the original plan. Nonetheless, several elm, maple, and oak trees remain.
- Street trees lining Vernor Ave. are mostly smaller maples recently planted.



Retaining Wall, Sixteenth Street

- A poured concrete retaining wall along Sixteenth St. appears to date from shortly before the creation of Roosevelt Park, when the creation of a viaduct required alterations to the street.
- Steps cut into the retaining wall appear to be spaced so as to provide access to houses which predate the park and no longer exist.



Existing Conditions



Vernor Highway



“ROOSEVELT”
letters



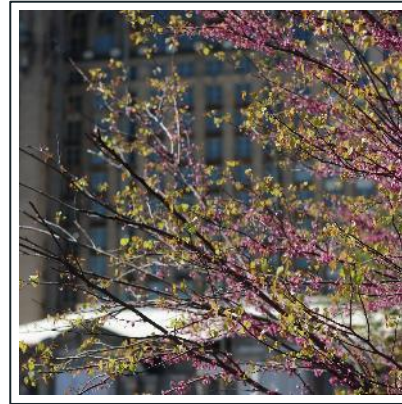
Park Sidewalks

Existing Conditions

- Majority of Sidewalk in poor repair
- Former irrigation system non-functional
- Overhead wire and wood pole lighting system (PLA)
- Several Art Installations
 - *Man in the City* (near Dalzelle/14th)
 - “ROOSEVELT” Letters
 - Steel retaining wall (near Michigan/16th)
 - Stone slabs in arc park space north of MCS

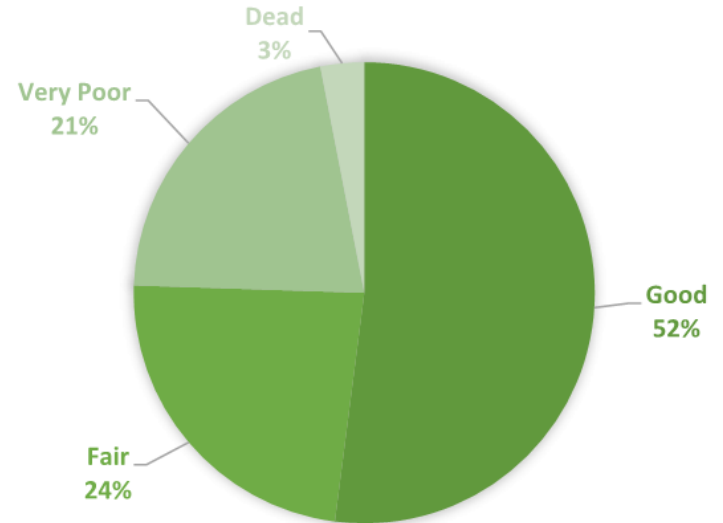


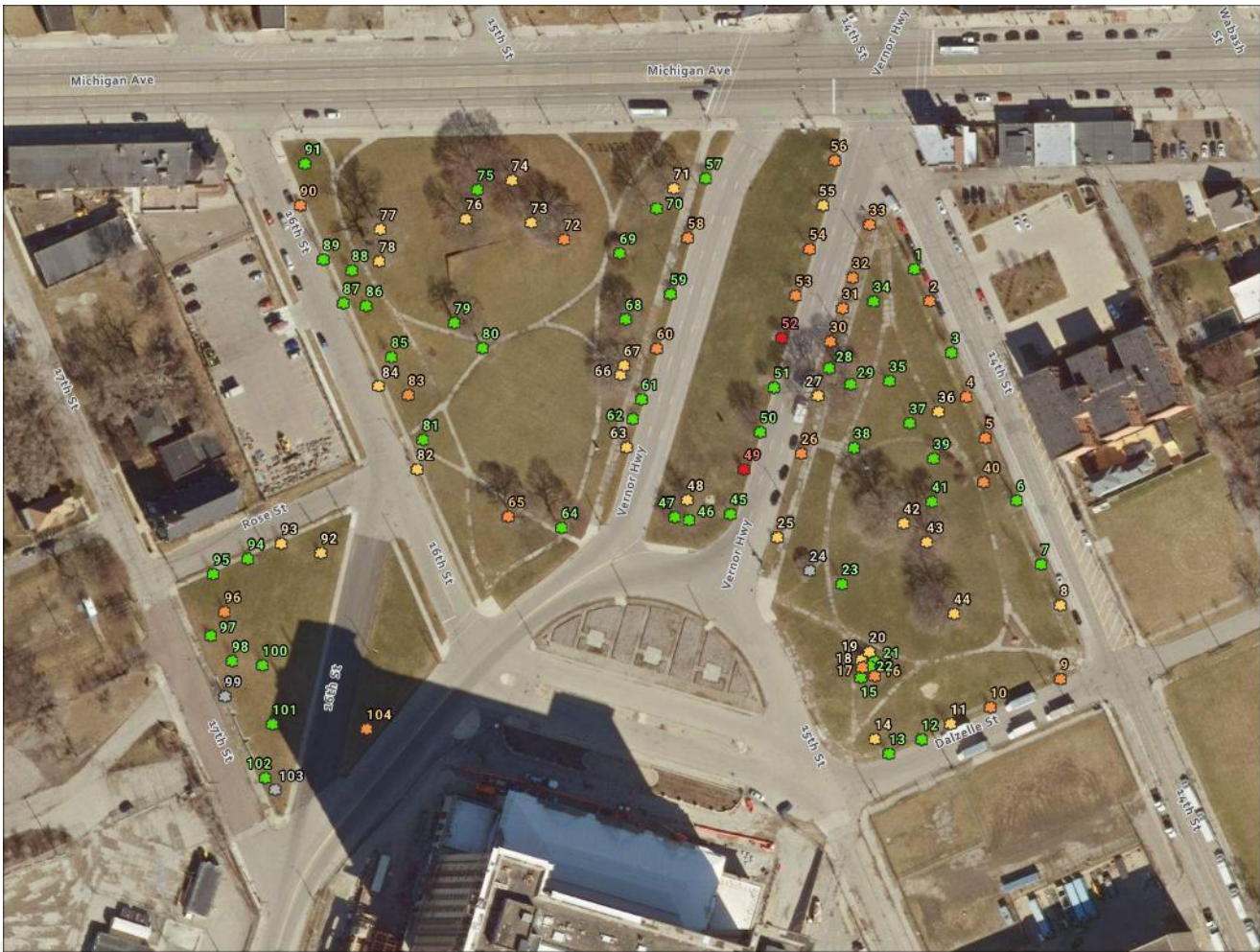
Trees and Vegetation



Existing Trees

- 104 total trees
- 20 Species (11 native, 6 introduced and 3 invasive)
- Top 5 Trees: Norway Maple, Crabapple, American Sycamore, Red Maple, Pin Oak





Roosevelt Park Unification

Tree Health Assessment:
Overall Condition

Overall Condition

-  Good (48)
-  Fair (27)
-  Very Poor (24)
-  Dead (2)
-  Invasive (3)

Community Engagement



COMMUNITY ENGAGEMENT

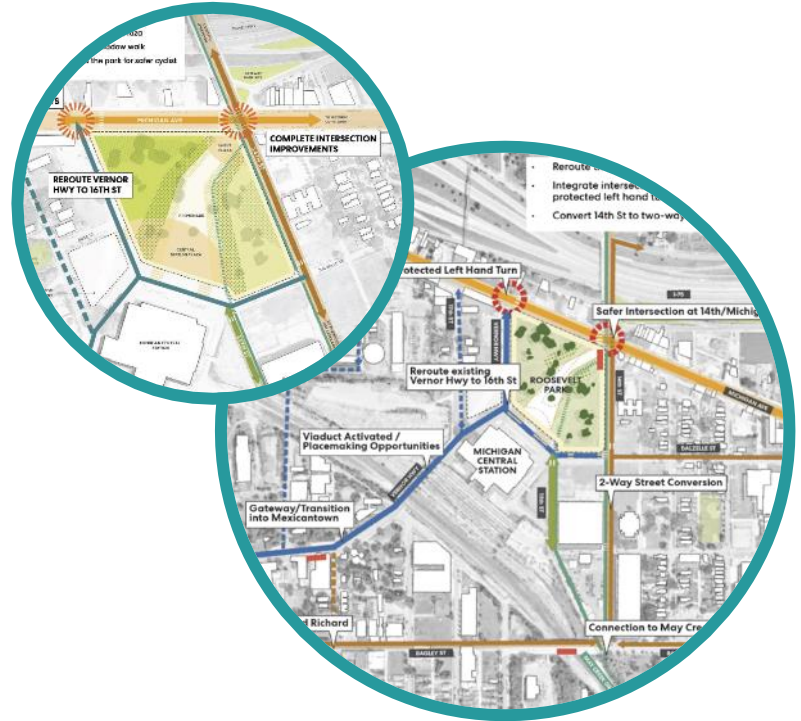
Since 2018, the City of Detroit has led an engagement surrounding Roosevelt Park and the surrounding Community. This began with the Corktown Neighborhood Framework Plan and has transitioned into the Roosevelt Park Redesign Project.



Greater Corktown Framework Plan

Identified Goals for Roosevelt Park

- **Unify Roosevelt Park**
- Park that **Welcomes and Serves Everybody**
- Vision as a **Central Meeting Point**
- **Sensitivity and Connection to Surrounding Communities** of Corktown, Southwest Detroit and Southwest Greenway
- Create an **Inviting, Active and Multipurpose Park** for Existing and Future Residents
- **Respect the Historic Michigan Central Station,** and Civic Life along Michigan Ave.



Unified Roosevelt Park Community Festival

JOIN US
ÚNETE A NOSOTROS

Unified ROOSEVELT PARK COMMUNITY ENGAGEMENT Festival

SATURDAY/SABADO
AUGUST/AGOSTO
28
12:00 PM - 5:00 PM

DEL ROOSEVELT PARK Unificado

Enjoy Music, Dance, Fitness, Food and Share Your Vision for Roosevelt Park!

¡Disfruta de la Música, el Baile, el Ejercicio, la Comida y Comparte Tu Visión para el Roosevelt Park!

more info: www.detroitmi.gov/rooseveltpark

Unified ROOSEVELT PARK COMMUNITY ENGAGEMENT Festival
PARQUE ROOSEVELT Unificado

EVENT SCHEDULE
PROGRAMACIÓN DE EVENTOS

12:00 PM	DJ Invisible
1:00 PM	Yoga in the Park w/ Detroit Yoga Lab
1:30 PM	DJ Invisible
2:00 PM	Ballet Folklorico De Detroit
2:45 PM	DJ Invisible
3:00 PM	Motor City Irish Dance
3:45 PM	DJ Invisible
4:00 PM	Afro Pop Dance Workshop w/ Patti Dukes
4:30 PM	DJ Invisible



Community Poll | November 2021

On a Scale of 1 to 5...

Does the Design Meet
Community Needs?

3.8

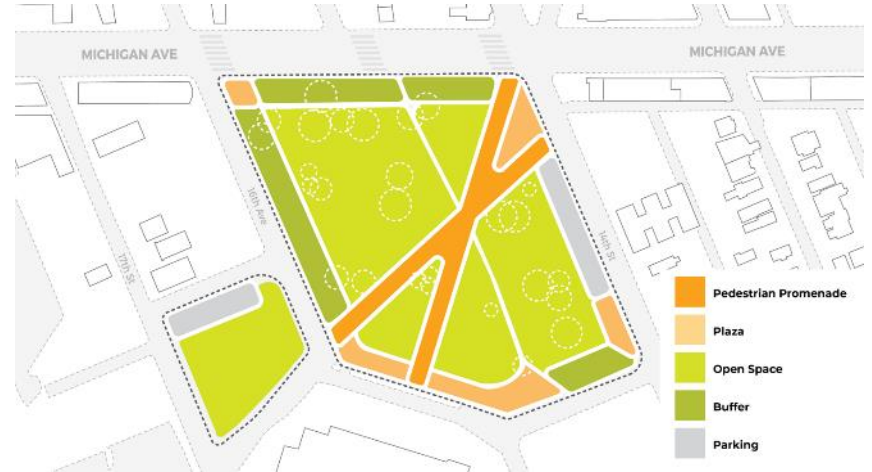
Is the Overall Design Going in the
Right Direction?

4.1

Will You Use the Park More Often
with These Improvement?

4.2

1 - NO ← → 5 - YES



Breakout Room Discussion | November 2021

Breakout Room Questions:

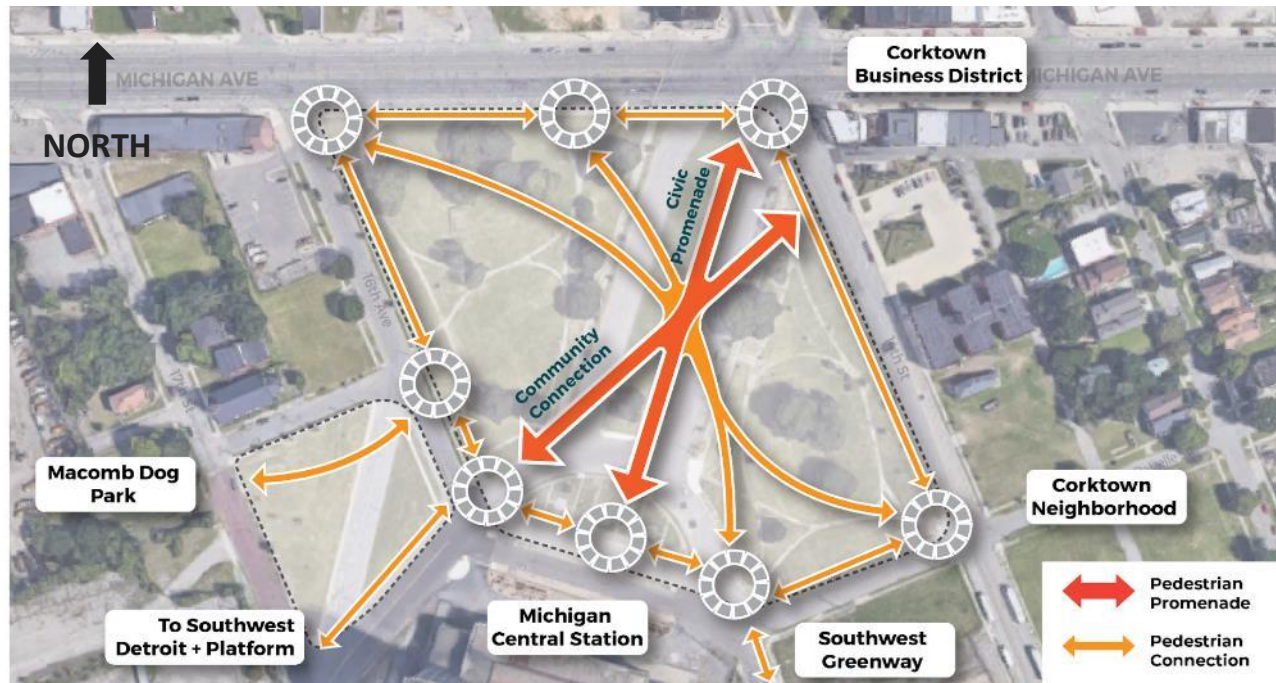
- What do you like most?
What do you like least?
 - How do you see yourself using these spaces?
 - How do you feel about the look of the park?
 - What do you imagine are the activities, events and elements that fill the park?
- Excited to see **action!**
 - **Prioritize the community**; Find balance between celebrating Michigan Central Station and creating community-centric spaces
 - Create spaces for **socializing, relaxing, strolling, picnicking** and **enjoying nature**. Spaces which are **family-friendly**
 - Can space **host large events** like the Irish/Mexican Festival?
 - Ensure park feels **active and programmed**, but don't over-program
 - **Strengthen connections** to surrounding neighborhoods



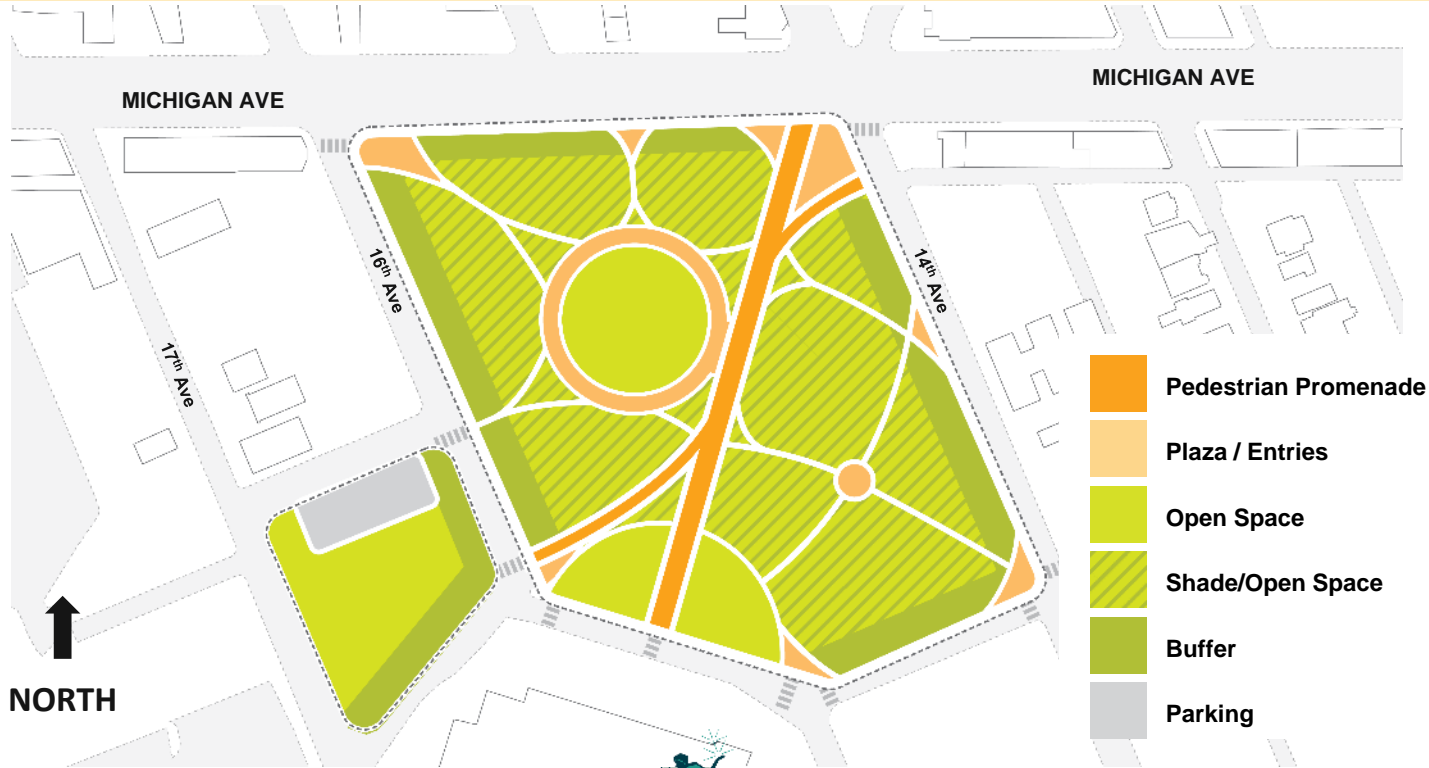
Roosevelt Park Phase 1 Proposed Design



Concept Development



Updated Concept Diagram



Phase 1 Design



Michigan Ave
Improvement Project

MICHIGAN AVE

17th STREET

16th STREET

14th STREET

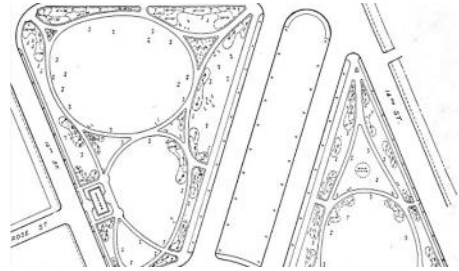


NORTH

Michigan Central
Station

15th Street
Improvement Project

Historical Park Design



- Respect City Beautiful design motifs
- Strong geometry and forms balanced by organic curves and landscaping
- Focused views to Michigan Central Station
- Gardens, Walks and Open Space



Overall View



Overall View



Entries



- **Create Welcoming and Engaging Entrances**
- **Create Flexible Space for Individuals and Small Groups to Gather**
- **Entry Features**
 - Recognizable and Similar All the Way Around Park
 - Include Landscape Garden Beds
 - Flowering Trees
 - Seating
 - Bottle Fillers (Strategically Located)
 - Expanded Bike Facilities (Located as Needed)

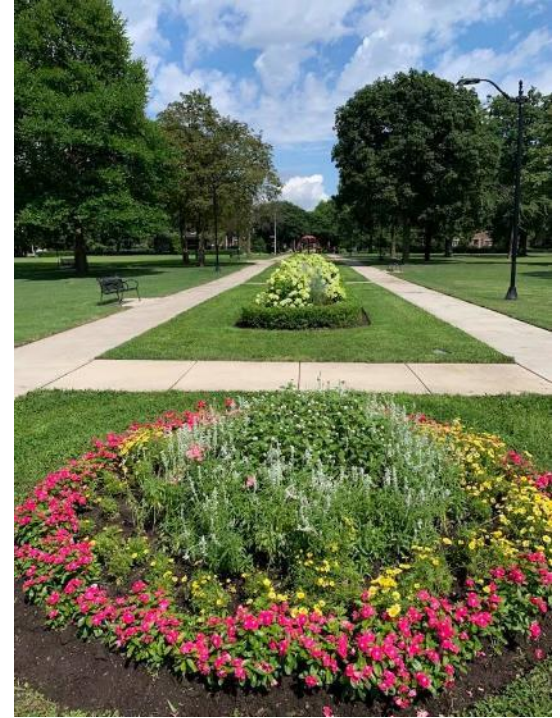
Michigan Ave Entrance Plaza



Promenade



- Continue Historic Park Character
- Connect Southwest Detroit and Corktown Neighborhoods
- Focus Views to Michigan Central Station and Southwest Detroit



Promenade



Plaza



Open Spaces



- **Flexible** – Large Open Areas for Picnics, Play Elements, Games, and Shaded Tree Areas
- **Comfortable** – Open Space Buffered from Noise and Street Traffic
- **View** – Instagram Moments Inside the Park
- **Program** – Self Program Play – “Choose Your Own Park Adventure” + Park Programming with Community Partners



Event Lawns



- **Flexible** – Large Lawn Spaces for Community and City Events, or Other Large Gatherings
- **Views** – Prominent Sight Lines of Michigan Central Station and the Detroit Skyline



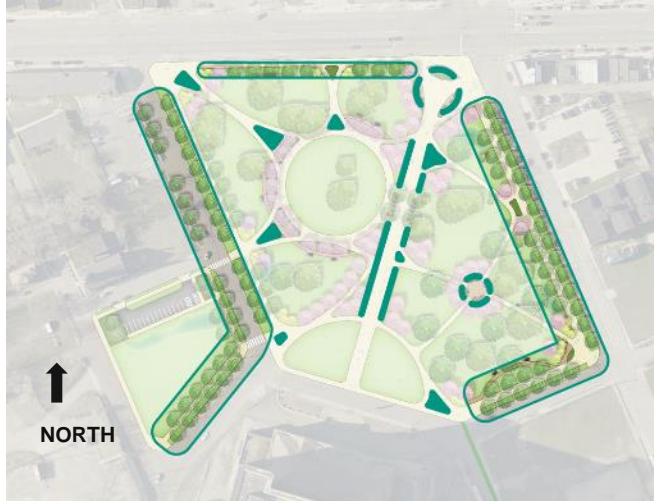
Open Space



Open Space

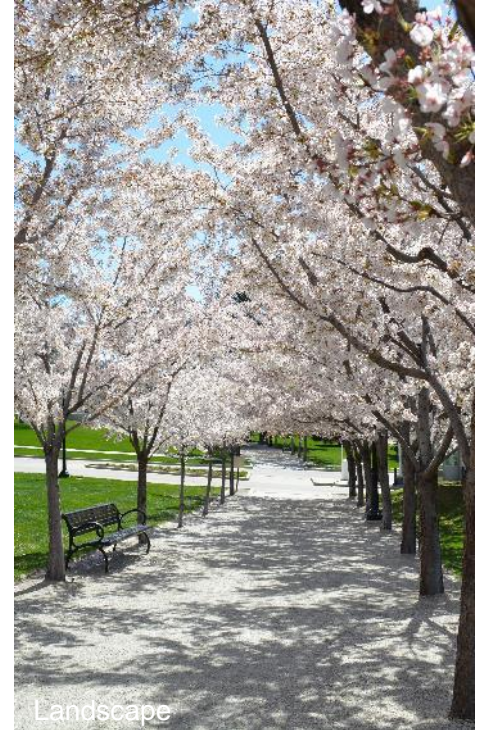


Buffers and Landscaping

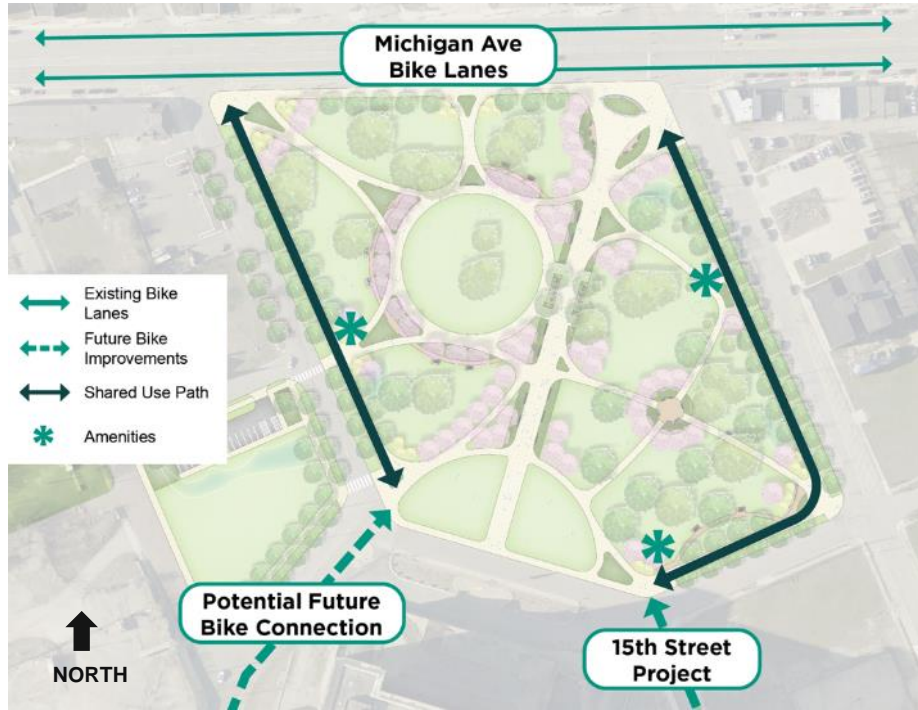


↑
NORTH

- Buffer from Michigan Ave and Freeway Noise
- Create Maintained and Beautiful Park Edge
- Focus Movement Toward Park Entries
- Provide Beautiful Views Inside and Outside the Park



Bike Routes



- Provide a connection between Southwest Greenway and Michigan Avenue Bike Lanes

Parking



On-Street Parking Maintained

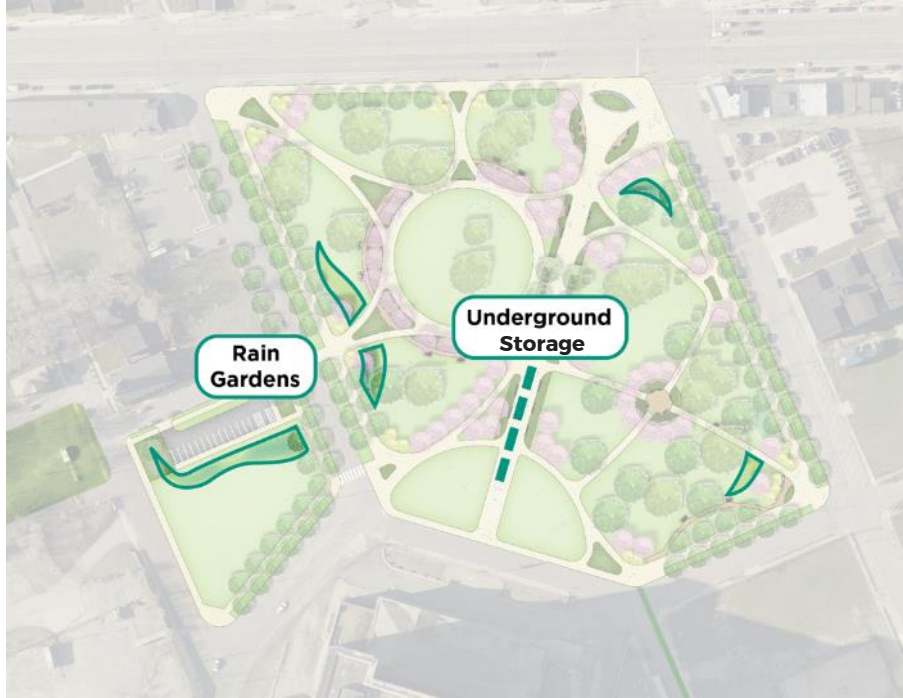
Designate Accessible On-Street Parking Spaces on 16th and 14th

Park Design can Accommodate Future Buffered Parking if Roadways Change

Potential Future Off-Street Parking on Rose Street

Additional Parking Structures in Area to Provide Parking for Larger Events

Stormwater Infrastructure



Beautifies the Site as a Unique Park Element

Provides Water Quality Improvements

Eases the Burden on Sewer Systems and Reduces Flooding

Will Feature Native and Adapted Plantings



Design Response to Contributing Historic Features

Vehicle circulation network and boulevard

- The historic axis and viewshed on Michigan Central Station has been maintained through the development of the Promenade.

Pedestrian circulation network

- Pathway layouts and curvilinear alignments modeled from historic design and provide similar circulation and viewsheds.

Trees

- The design preserves the majority of the existing landmark trees, specifically American Elms.
- New species which will provide future generations the benefits of a mature, high-quality tree canopy

16th Street Retaining Wall

- The retaining wall will be left untouched by Phase I



Budgeted Investment

- Phase 1 Investment will set the vision for the park
- \$4 Million investment will provide:
 - Road removal
 - Unify the Park
 - New walks
 - New plantings
 - Lighting



Project Implementation

Final Design:

January 2022

Bidding and Contract Award:

February to April 2022

Construction:

Summer through Fall 2022

Construction Kick-off Meeting

Spring 2022



Questions?

