

## WINDOWS

There are currently 3 different types of windows - wood, aluminum & vinyl. There are some windows missing entirely and some missing the top or bottom panel.

Scope of work: We would like to replace all windows to vinyl.

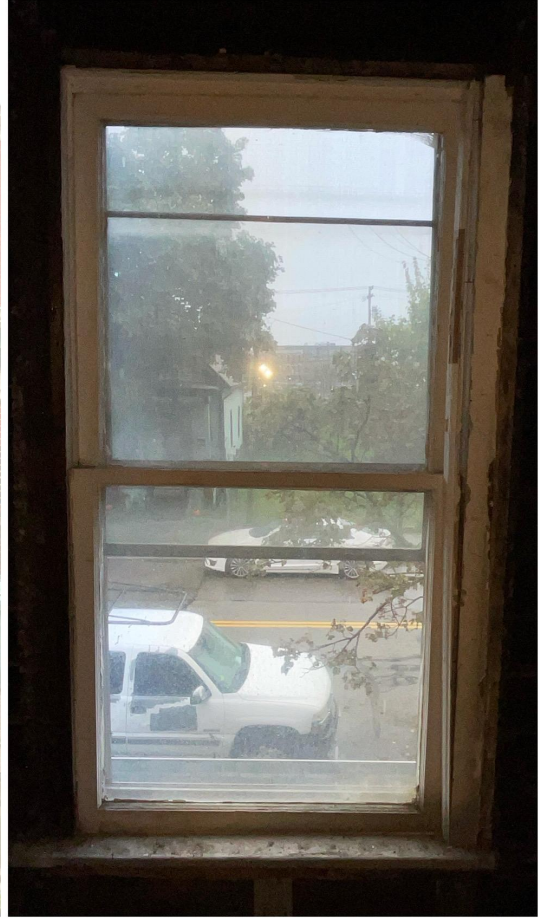
Reason: Windows cannot be repaired.

Note\* Neighbors on each side of subject property have vinyl windows.  
(Pictures Bellow)

WOOD INTERIOR, ALUMINUM EXTERIOR







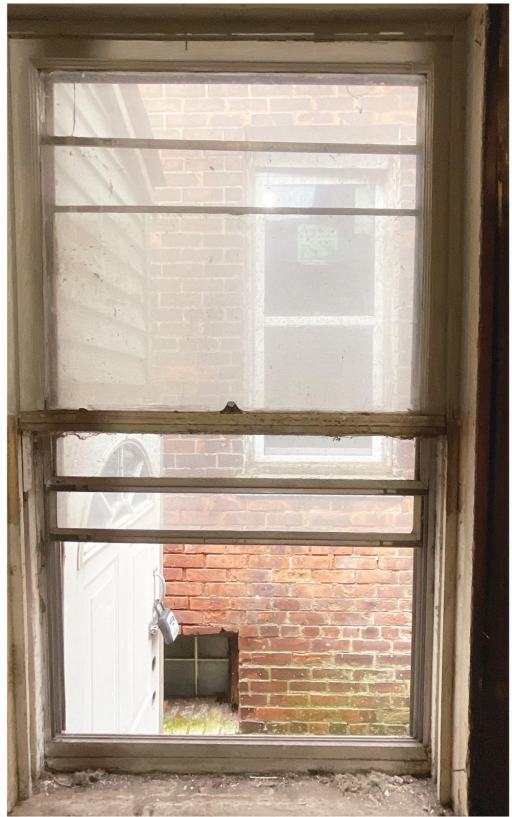












ALUMINUM INTERIOR & EXTERIOR



VINYL





DETERIORATION TO EXISTING WINDOWS









Neighbors on each side currently have all vinyl windows:

**1407 BAGLEY**





1413 & 1415 BAGLEY



**SPECS FOR PROPOSED NEW WINDOWS:**

\*Sizes in these specs of course will be according to each window

**American Craftsman 23.375 in. x 35.25 in. 50 Series Single Hung White Vinyl Window with Nailing Flange**

★★★★☆ (323)

---





**American Craftsman 23.375 in. x 35.25 in. 50 Series  
Single Hung White Vinyl Window with Nailing Flange**

Overview

Specifications

Reviews

**Exterior Color/ Finish**

White

**Exterior Color/Finish Family**

White

**Features**

Tilt-In Cleaning

**Frame Material**

Vinyl

**Frame Type**

Nail Fin

**Glass Type**

Low-E Glass

**Glazing Type**

Double-Pane

**Grid Pattern**

No Grid

**Grid Width (in.)**

None

**Grille Type**

No Grille

**Hardware Color/Finish Family**

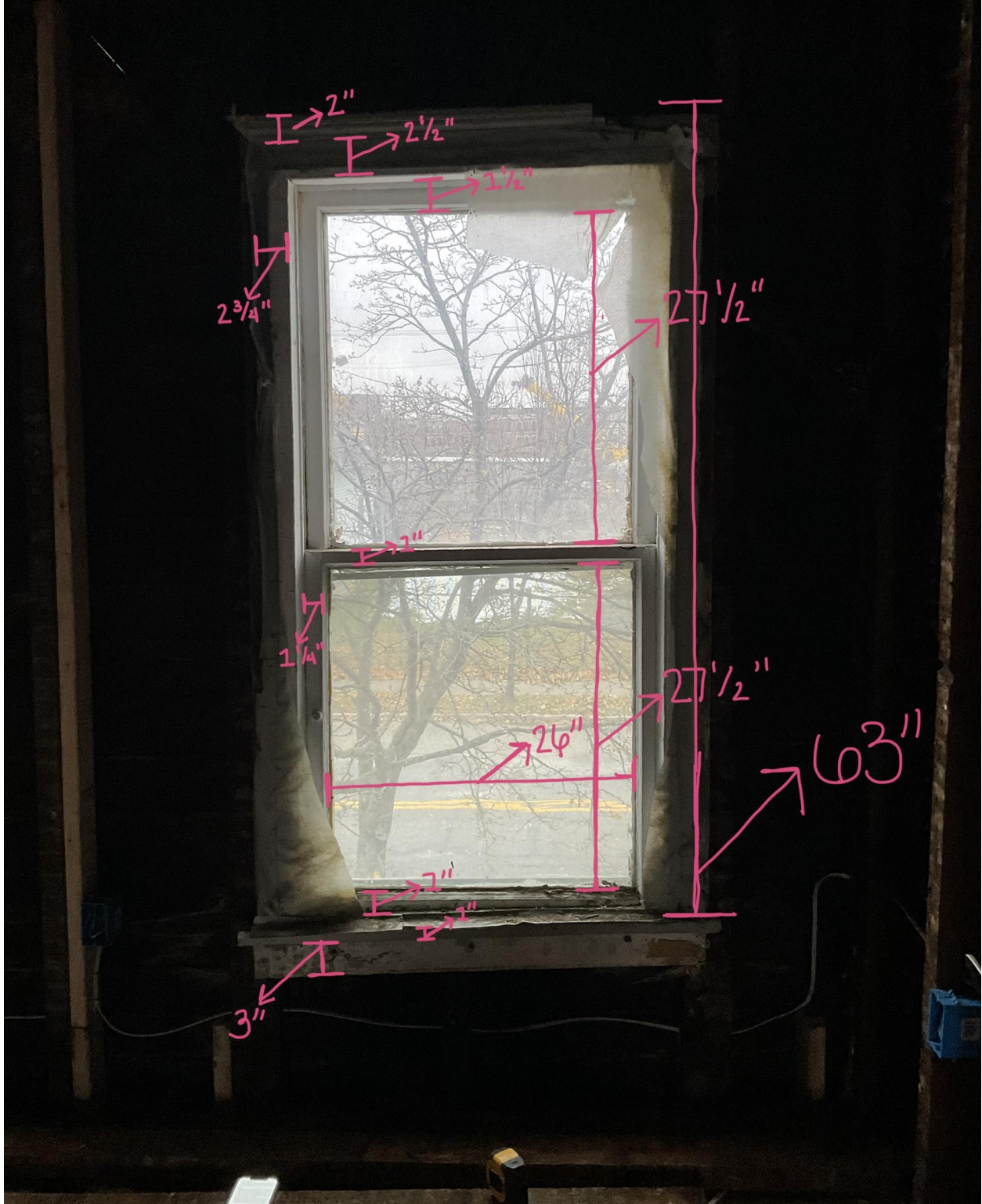
White

**Included**

Hardware,Screen

<b>Lock Type</b>	Cam Action
<b>Number of Grids</b>	No Grid
<b>Number of Locks</b>	1
<b>Product Depth (in.)</b>	3.5 in
<b>Product Height (in.)</b>	35.25 in
<b>Product Highlight 1</b>	Designed for installation into new openings
<b>Product Highlight 2</b>	Low-maintenance vinyl never needs painting
<b>Product Highlight 3</b>	Tilt-in feature for easy cleaning
<b>Product Weight (lb.)</b>	24 lb
<b>Product Width (in.)</b>	23.375 in
<b>Returnable</b>	90-Day
<b>Rough Opening Height (In.)</b>	35.75 in
<b>Rough Opening Width (In.)</b>	23.875
<b>Solar Heat Gain Coefficient</b>	.26
<b>U-Factor</b>	.29

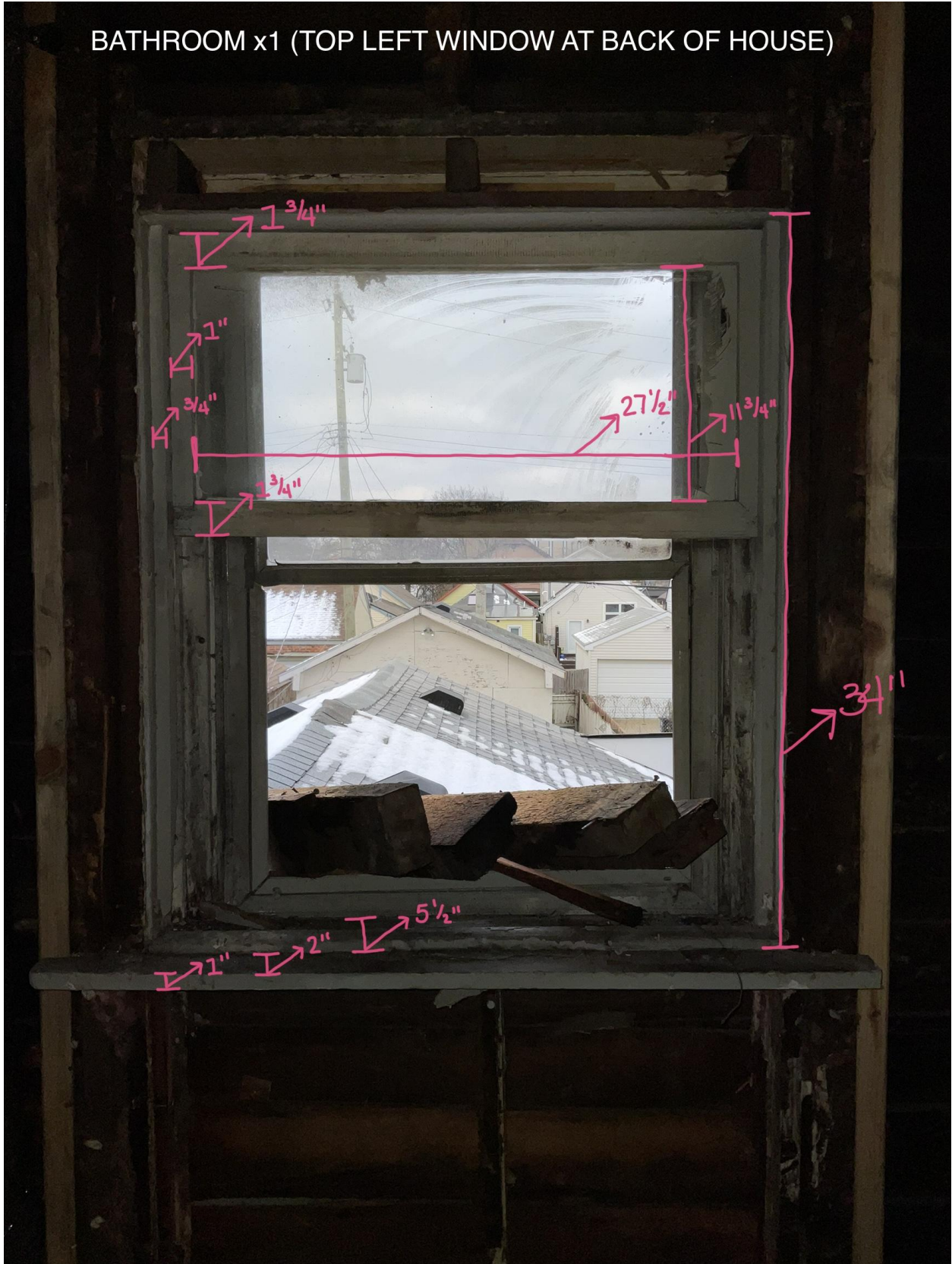
BEDROOM 1 x3 (Top 3 windows at front of house)  
BEDROOM 2 x1 (Top right window at back of house)



BEDROOM 1 x3 (Top 3 windows at front of house)  
BEDROOM 2 x1 (Top right window at back of house)



BATHROOM x1 (TOP LEFT WINDOW AT BACK OF HOUSE)





BATHROOM x1 (TOP LEFT WINDOW AT BACK OF HOUSE)

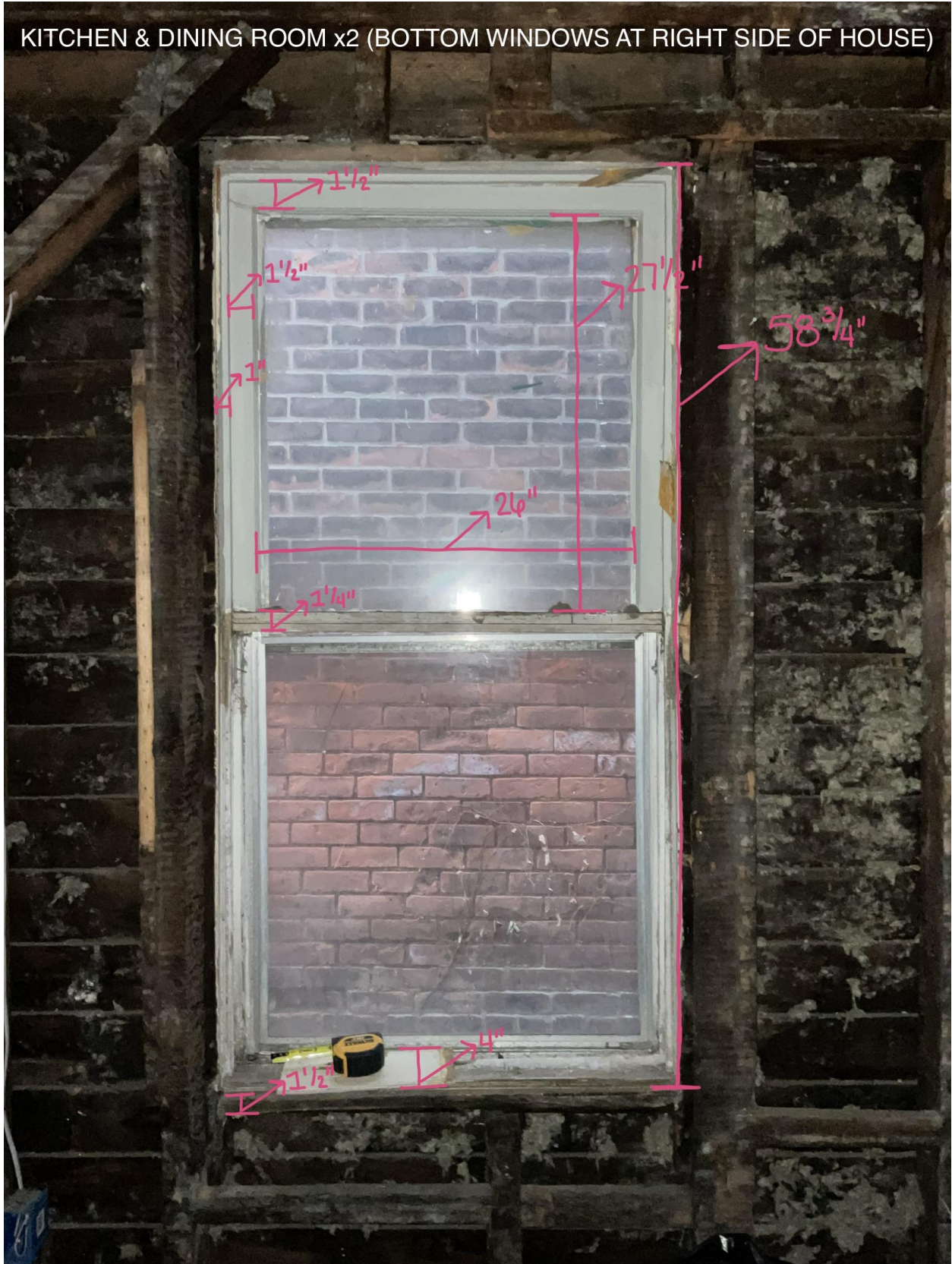


LIVING ROOM x2 (BOTTOM WINDOWS AT FRONT OF HOUSE)





KITCHEN & DINING ROOM x2 (BOTTOM WINDOWS AT RIGHT SIDE OF HOUSE)



KITCHEN & DINING ROOM x2 (BOTTOM WINDOWS AT RIGHT SIDE OF HOUSE)



- Some windows only contain the upper sash while others retain both the lower and upper.
  - No windows have been reduced in size or had any modifications. All window openings are as they were when we purchased the property.
  - We did not plan for all windows to go back to their original size, but if vinyl is approved we can work on matching the original sizing if this is what is preferred/required.
- 

## GUTTERS

Missing gutters and damaged gutters throughout.

Scope: We would like to install 5" black seamless aluminum gutters where there are currently none, and paint current ones in black (B-19)

Size of current gutters: 5"



Would like to install similar to this:

**Amerimax Home Products** 5 in. x 10  
ft. K-Style Black Aluminum Gutter

---







-Gutter downspouts will be installed in the same locations as they were in the original design of the house back in 1884. Photo above.

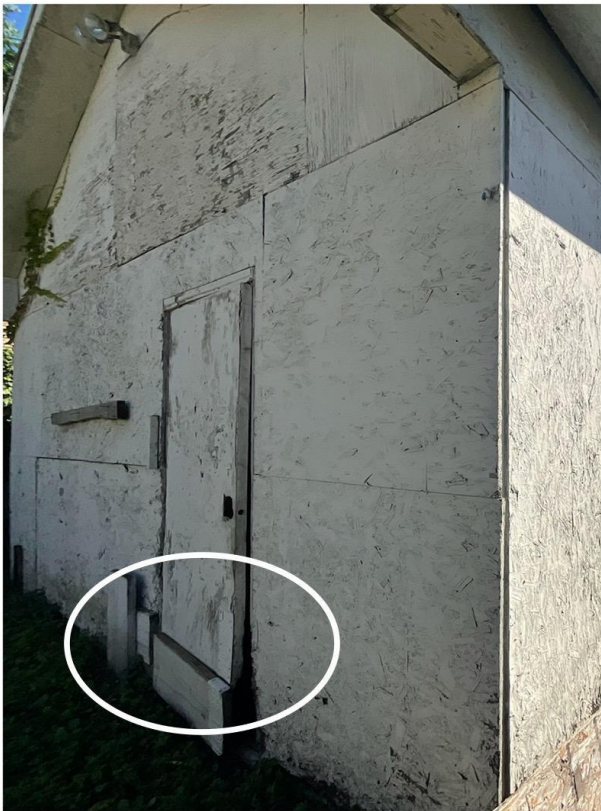
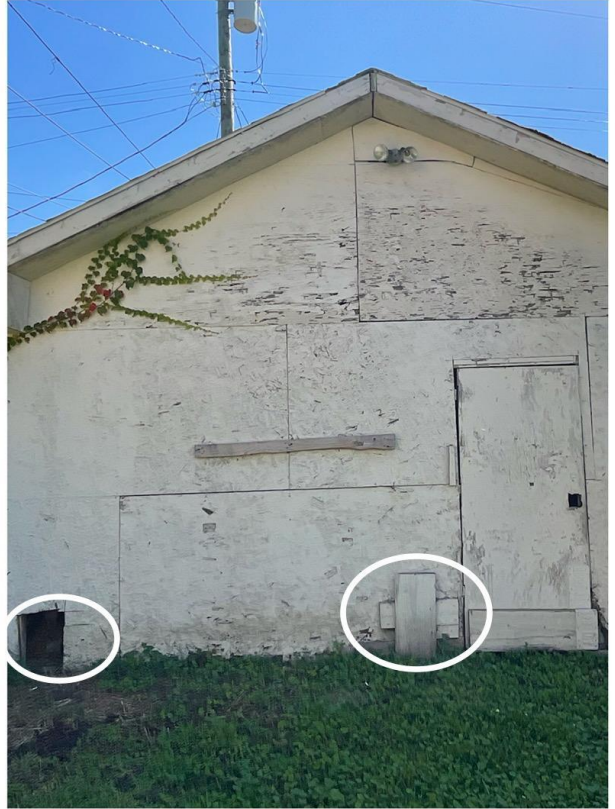
---

## GARAGE

Garage exterior is currently plywood. There are holes and patches throughout which makes it unsecured. We would like to add new vinyl siding which will match the house.

We will repair the current garage door if repairable, if not we will need to replace it with the same style and keep it white.

Size of current garage door: 16x8

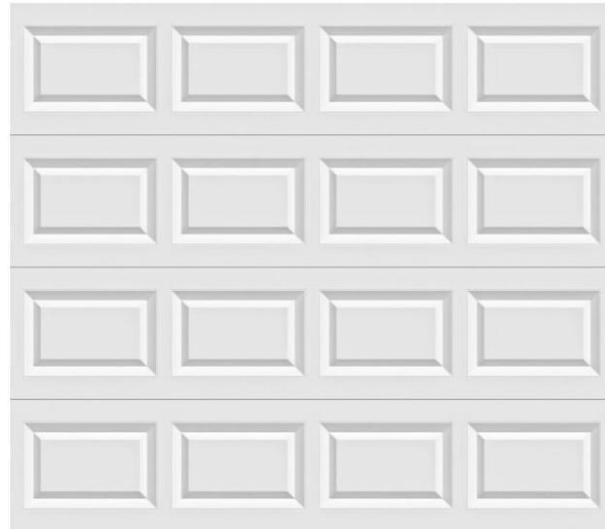


If replacement is required, would like to replace with this:

**Clopay Classic Collection 8 ft. x 7 ft.  
Non-Insulated White Garage Door**



★★★★★ (216)



- The exposed plywood on the exterior is installed directly on top of the framing. There is no siding underneath
- We will remove the current pedestrian door as it's just plywood, rotted at bottom corner and no proper hole for a door knob, and we will replace with a new exterior aluminum door





---

## SOFFITS/FASCIA

There is currently damage and deterioration to the soffits/fascia. Will need to replace it. Current materials used are wood and materials for

replacement will also be wood.





Size of current fascia: 1x6

Size of current soffit: 14'x5'x4"

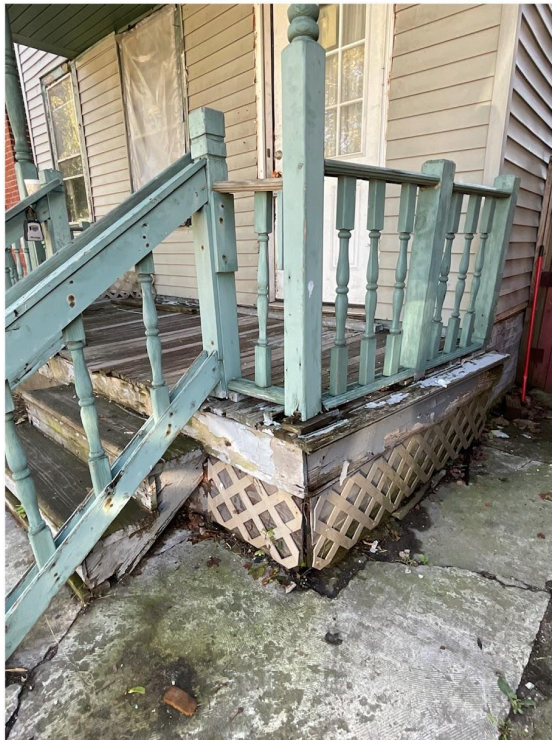
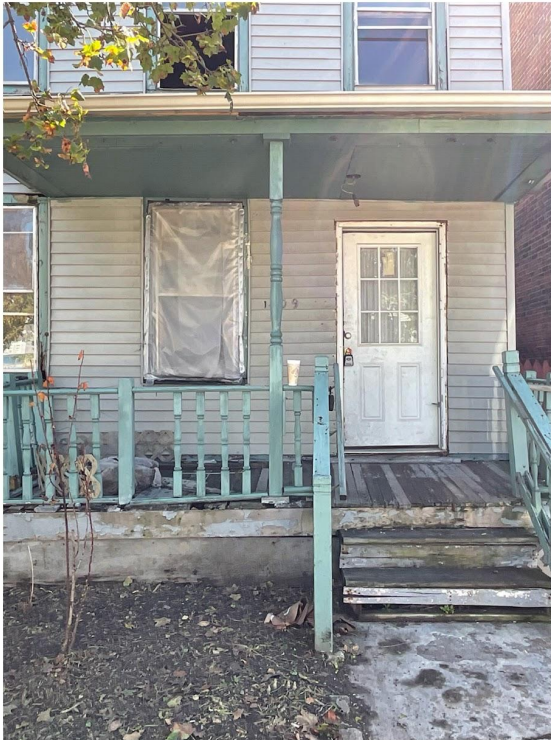
Replace all soffit and Fascia in the same size and material of current which is wood.



---

## FRONT PORCH

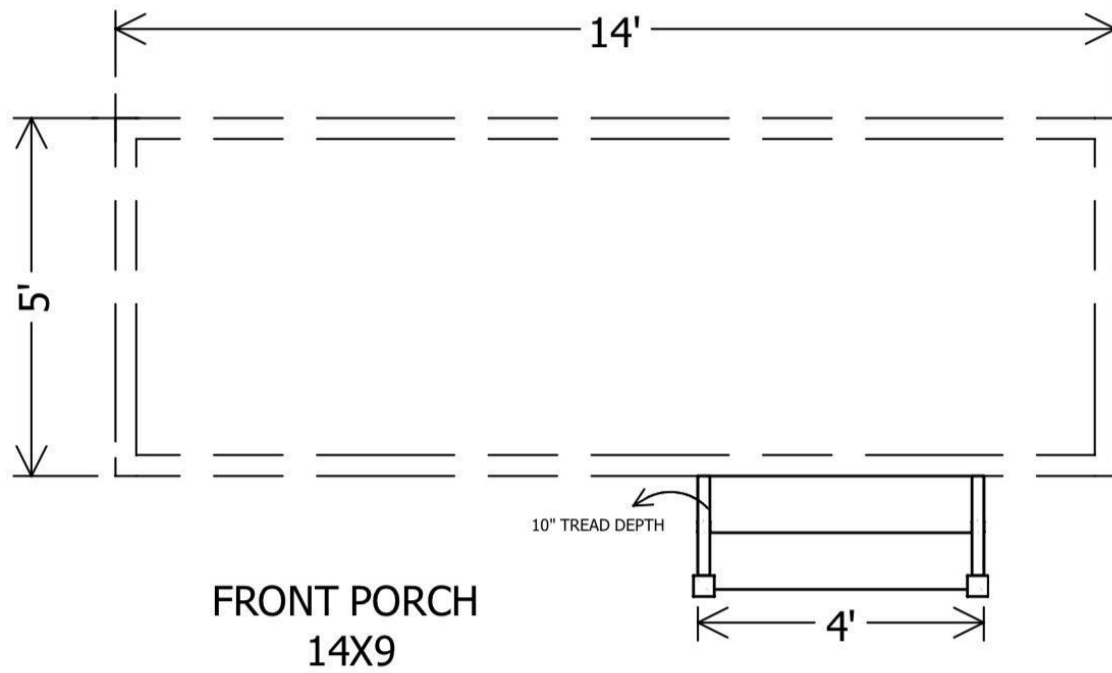
There is a lot of deterioration to the front porch currently and it is not structurally sound or safe. We will do an "in kind" repair.







Size of current porch: 14'x5'



Size of elements to current porch:





Materials for porch repair:

- Will use current wooden rails/wooden posts/wooden balusters. Will sand and paint them
- Wood soffit & fascia
- Pressure treated wood for the floor 1x4

**WeatherShield** 1 in. x 4 in. x 12 ft. Ground Contact Pressure-Treated Board

★★★★☆ (182)



Nominal Product Length (ft.): 12 ft

12 ft  8 ft





**WeatherShield 1 in. x 4 in. x 8 ft. Ground Contact Pressure-Treated Board**

Overview

Specifications

Reviews

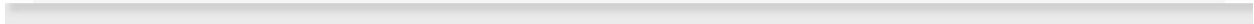
<b>Actual Product Length (ft.)</b>	8 ft
<b>Actual Product Thickness (in.)</b>	0.75 in
<b>Actual Product Width (in.)</b>	3.5 in
<b>Chemical retention (lb./cu. ft. )</b>	0.15
<b>Color/Finish</b>	Brown
<b>Fastener Recommendation</b>	Galvanized Fastener
<b>Features</b>	Paintable,Pressure Treated,Stainable
<b>Lumber Grade</b>	Appearance Grade
<b>Material</b>	Southern Yellow Pine
<b>Moisture content</b>	Green
<b>Nominal Product Length (ft.)</b>	8 ft
<b>Nominal Product Thickness (in.)</b>	1
<b>Nominal Product Width (in.)</b>	4 in
<b>Pressure treatment chemical</b>	MCA - Micronized Copper Azole
<b>Product Highlight 1</b>	2X the protection compared to Above Ground treatment
<b>Product Highlight 2</b>	Treated for protection against fungal decay, rot and termites
<b>Product Highlight 3</b>	Use for decks, walkways, landscaping and other outdoor projects
<b>Texture</b>	Smooth
<b>Wood Species</b>	Southern Pine

-Pressure treated lumber for porch beam support 2x12

**Unbranded** 2 in. x 12 in. x 16 ft. Prime  
Ground Contact Pressure-Treated  
Lumber



★★★★☆ (29)





**Unbranded 2 in. x 12 in. x 16 ft. Prime Ground Contact Pressure-Treated Lumber**

Overview

**Specifications**

Reviews

**Actual Product Length (ft.)** 16 ft

**Actual Product Thickness (in.)** 1.5 in

**Actual Product Width (in.)** 11.5 in

**Chemical retention (lb./cu. ft. )** 0.15

**Color/Finish** No Color

**Fastener Recommendation** Galvanized Fastener

**Features** Pressure Treated

**Lumber Grade** No. 2 Appearance

**Material** Wood

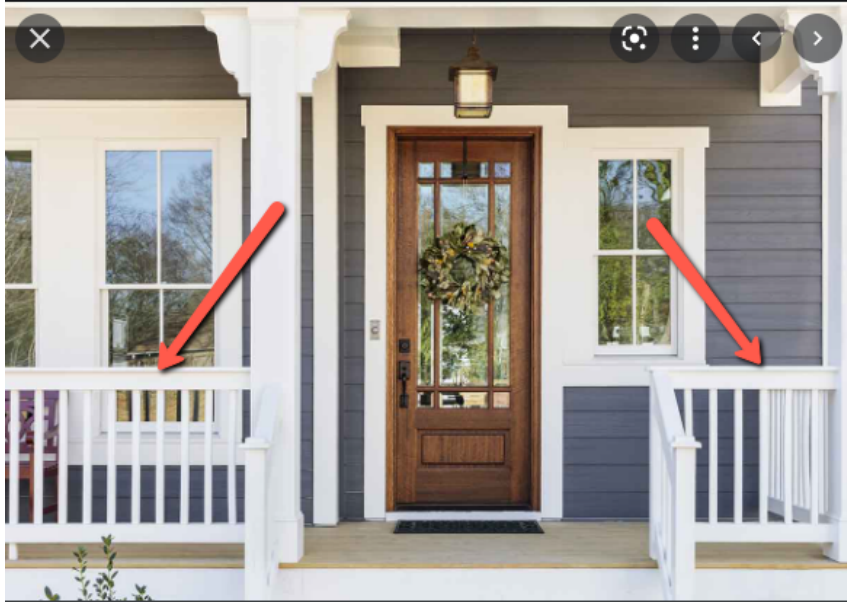
**Moisture content** Green

**Nominal Product Length (ft.)** 16 ft

**Nominal Product Thickness (in.)** 2

<b>Product Highlight 1</b>	Suitable for decks, walkaways, and other outdoor projects
<b>Product Highlight 2</b>	Treated with micronized copper azole to resist rot and decay
<b>Product Highlight 3</b>	Can be painted or stained to enhance natural beauty of the wood
<b>Texture</b>	Smooth
<b>Wood Species</b>	Southern Pine





Colors for porch repair:

- Wood floor - light bluish grey (C-1)
- Railing/posts/balusters - grayish olive green (B-11)
- Soffit & fascia - grayish olive green (B-11)

-According to our experience with the building department, if the current porch is grandfathered in we will do an in-kind repair, save the existing elements and make it structurally sound. If we cannot repair, to our knowledge the building department will work with the Historic Commission's requirements while also making sure the porch be built up to code. We will build the new porch according to the original design dated 1884, while also installing a rail which is required by code. The rail we will use is in the picture above.

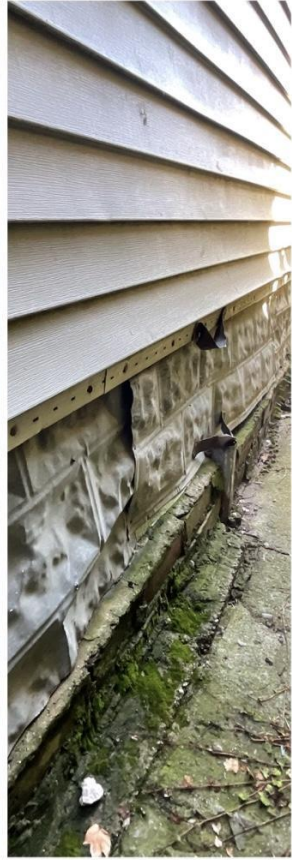
-The colors we would like to use are listed above.

-The current front and back exterior doors will be retained.

---

## SIDING

The siding is not in good condition. There are many spots around all sides of the house that are damaged or missing and not repairable. We would like to replace it with vinyl siding of an approved color.





Scope: New siding will be installed in the color of A:7 Bluish Gray



**Unbranded** Double 5 in. x 144 in. Slate  
Blue Lap Vinyl Siding

---



'k



**Unbranded Double 5 in. x 144 in. Slate Blue Lap Vinyl Siding**

Overview

**Specifications**

Reviews

**Color Family** Blue

**Color/Finish** Blue

**Coverage Area (sq. ft.)** 200

**Finish Type** Finished

**Material** Vinyl

**Product Highlight 1** Hang-Tough technology resists cracking and thermal damage

**Product Highlight 2** Advanced locking system ensures easy installation and secure fit

**Product Highlight 3** Backed by manufacturer's limited lifetime warranty

**Product Length (in.)** 144 in

**Product Thickness (in.)** .040 in

**Product Width (in.)** 11.78 in

**Profiles** Clapboard

- The original wood siding underneath is deteriorating and cannot be repaired, or it is missing entirely. Photos above shows this.
- The scalloped siding at top of the house will be retained. This is the only location on the house where there is decorative siding.
- New vinyl siding will retain exposure of current wood window casings if we cannot replace with vinyl.
- Between the foundation of the house and ground is a metal/aluminum material. We have checked several places online and were unable to find anything similar to match.