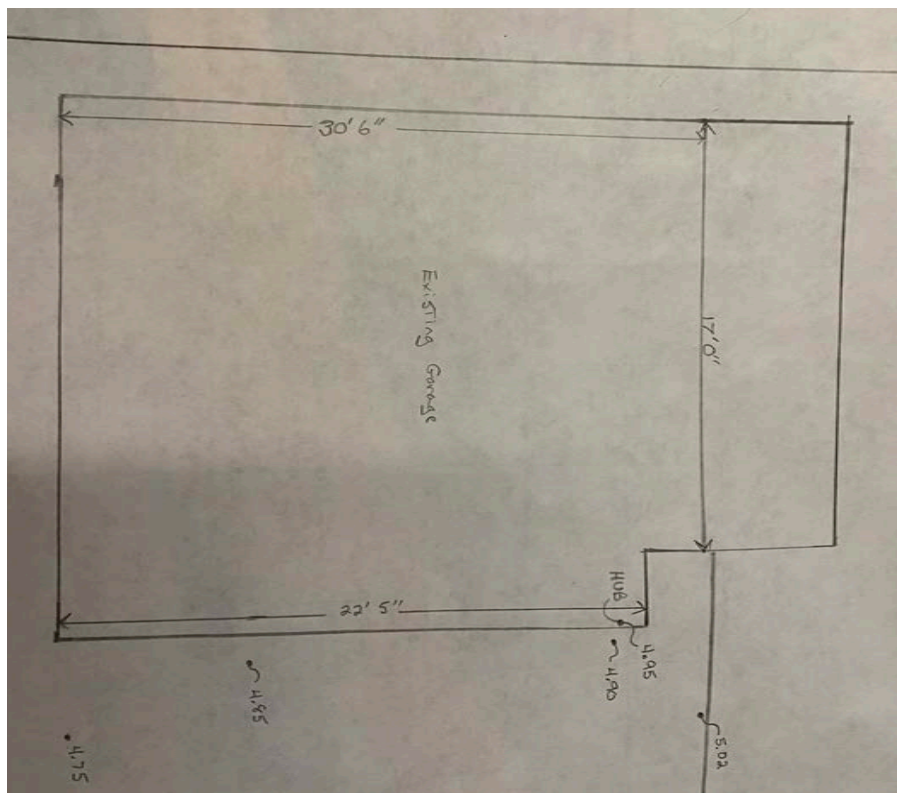


## INTRODUCTION

The garage underwent an expansion at some point, we are including this in our application for approval because we would like to keep the extra space and it is very well built. It was partially covered in a vinyl siding material, which we removed. We are proposing re-siding the garage using Hardi-Plank material, smooth 5 inch reveal, to match the home. Since it is a detached outbuilding we are proposing a dark blue paint color for the siding, we believe that even though it does not match the paint of the house it will contrast well and will help subdue the garage so it is less of a focal point in the back yard. For reference, any siding on the house is yellowish white (Sherwin Williams Windfresh White).

## SCOPE OF WORK

- Install siding
- Paint siding Bunglehouse Blue)
- Install trim around garage doors & man door
- Paint trim (Windfresh White)
- Repair gutters and install missing sections
- Paint gutters (Windfresh White)
- Replace shingles on expansion with architectural shingle to match rest of garage and house
- Install brick facade to match house with limestone ledge
- Install garage doors (specs attached)
- Build Gazebo on "seating area" pavers (see hardscape layout page 2) - This gazebo is moveable, it is not a permanent structure.

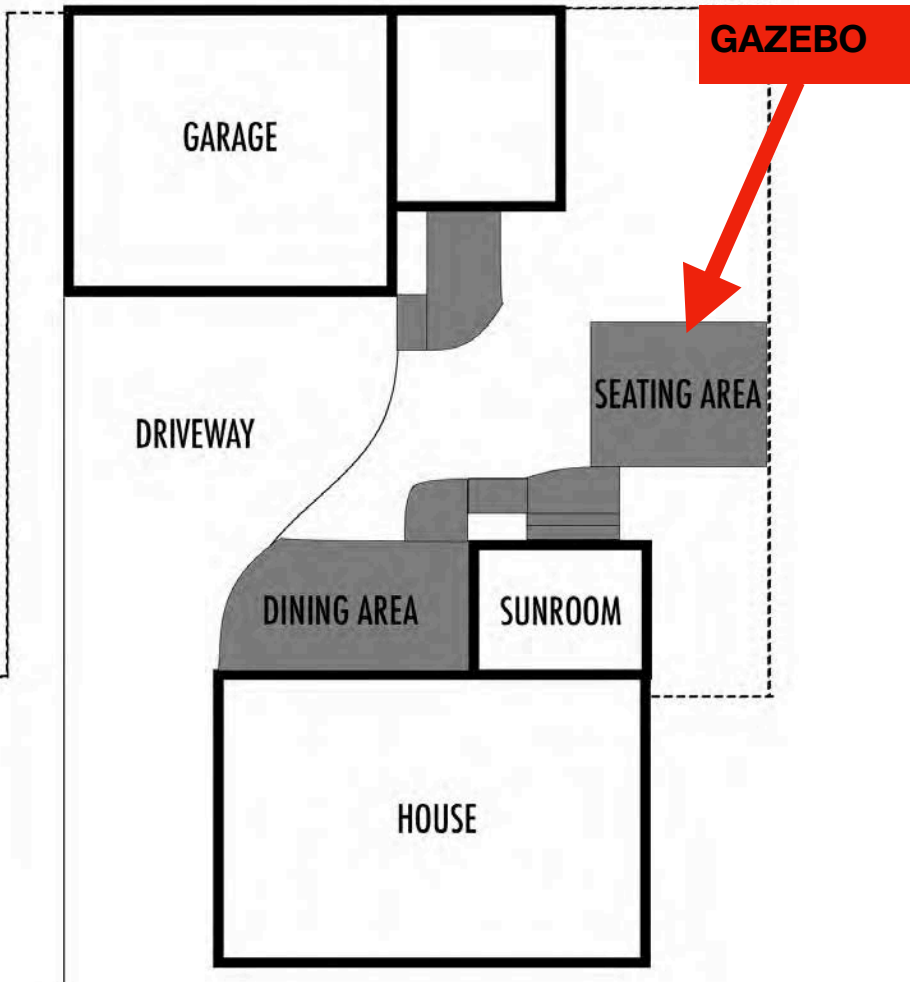




**2277 LONGFELLOW ST  
HARDSCAPE PLAN**

Grey areas indicate pavers

\*\* OAKS PAVER, COLLONADE  
SILVERSAND COLOR



# 12' x 14' WOOD GAZEBO

with ALUMINUM ROOF

## Installation and Operating Instructions – YM12941Z



HEIGHT:  
10'5" / 3.175m



<http://bit.ly/gazeboinstall>

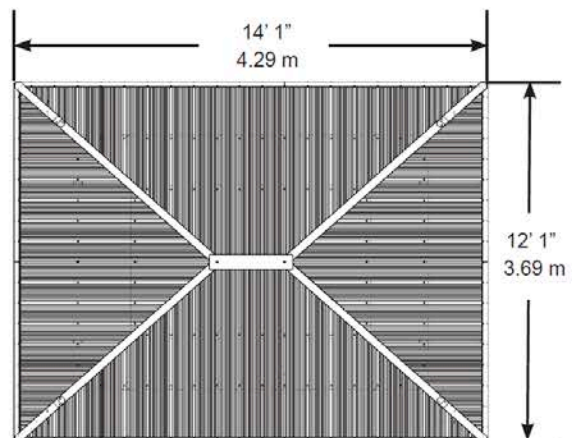
IMPORTANT, RETAIN FOR FUTURE REFERENCE: READ CAREFULLY

Revised 08-22-2019



Toll Free Customer Support:  
1.888.509.4382

[info@yardistrystructures.com](mailto:info@yardistrystructures.com)  
[www.yardistrystructures.com](http://www.yardistrystructures.com)





## SIDING SPECIFICATIONS

### HardiePlank®

Thickness 5/16 in  
Length 12 ft planks

#### SELECT CEDARMILL® & SMOOTH

	5.25 in	6.25 in	7.25 in	8.25 in	9.25 in*	12 in*
Width	5.25 in	6.25 in	7.25 in	8.25 in	9.25 in*	12 in*
Exposure	4 in	5 in	6 in	7 in	8 in	10.75 in
Prime Pcs/Pallet	360	308	252	230	190	152
ColorPlus Pcs/Pallet	324	280	252	210	—	—
Pcs/Sq	25.0	20.0	16.7	14.3	12.5	9.3

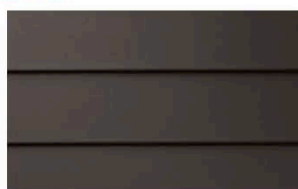
#### SELECT CEDARMILL®



#### SELECT CEDARMILL®

	5.25 in	6.25 in	7.25 in	8.25 in	9.25 in*	12 in*
Width	5.25 in	6.25 in	7.25 in	8.25 in	9.25 in*	12 in*
STATEMENT COLLECTION™				✓		
DREAM COLLECTION™	✓	✓	✓	✓		
PRIME	✓	✓	✓	✓	✓	✓

#### SMOOTH



#### SMOOTH

	5.25 in	6.25 in	7.25 in	8.25 in	9.25 in*	12 in*
Width	5.25 in	6.25 in	7.25 in	8.25 in	9.25 in*	12 in*
STATEMENT COLLECTION™						
DREAM COLLECTION™		✓	✓	✓		
PRIME	✓	✓	✓	✓	✓	✓

\* HZ5® planks feature a drip edge. 9.25 in and 12 in widths in do not feature the drip edge



**SIDING COLOR: SW 0048 BUNGLEHOUSE BLUE**

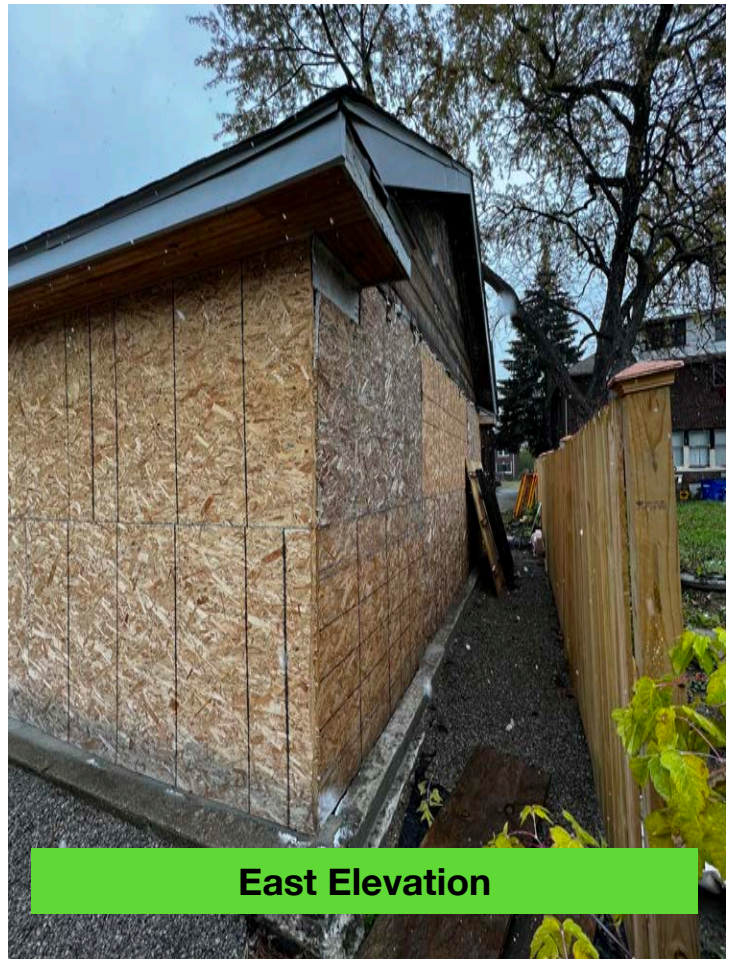
**TRIM COLOR: SW 7628 WINDFRESH WHITE**

(Greenblack pictured, but not used)





**South Elevation & East Elevation**



**East Elevation**

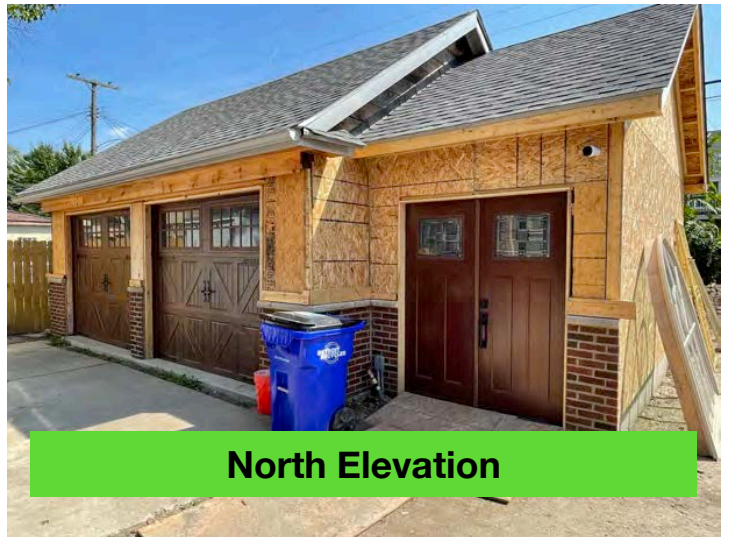


**West Elevation**



**West Elevation & South Elevation**





NOTE: Arch window and security doors are NOT being installed. These were left on the property.