

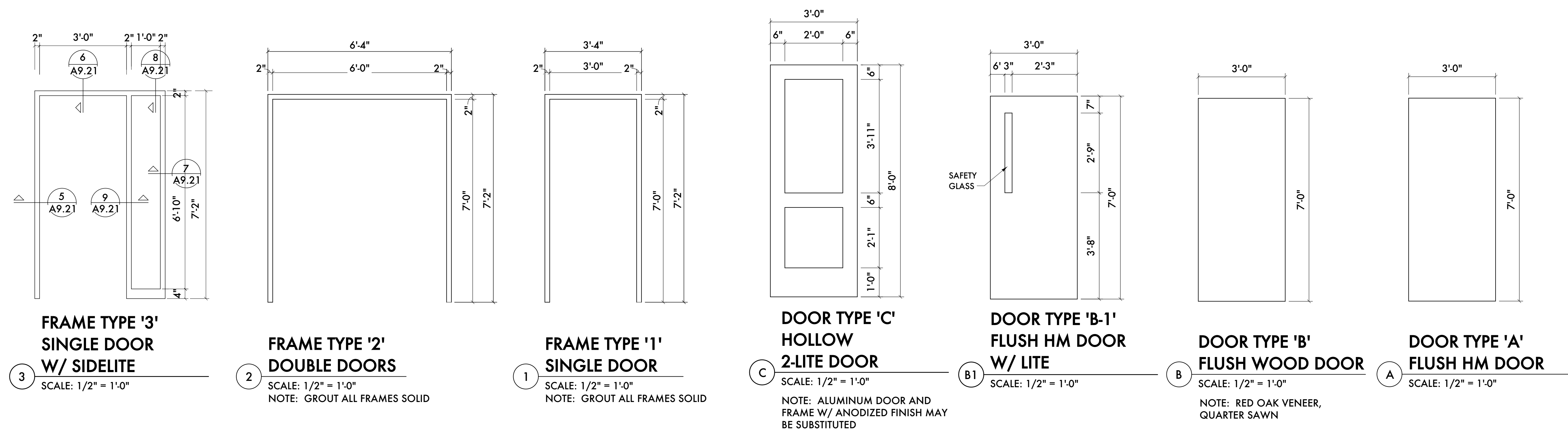
**ENTRY DOOR & FRAME
BASIS OF DESIGN:**

DOOR FRAME:
MANUFACTURER: CECO (ASSA ABLOY)
SERIES: SQ
TYPE: MITERED AND WELDED CORNERS
THICKNESS: 16 GAUGE, GALVANIZED
DEPTH: MATCH WALL THICKNESS, MINIMUM 5 3/4"
COLOR: PAINT TO MATCH BLACK ANODIZED

DOOR:
MANUFACTURER: CECO (ASSA ABLOY)
SERIES: 1 3/4" REGENT (R) HONEYCOMB CORE
TYPE: FLUSH PANEL STEEL DOOR
DOOR DESIGN: TYPE G
THICKNESS: 18 GAUGE, GALVANIZED

**GARAGE DOOR
BASIS OF DESIGN:**

MANUFACTURER: WAYNE DALTON
MODEL: 8850 SERIES ALUMINUM
SERIES: DOUBLE WIDE FRAME, (3 PANEL),
POLYURETHANE FILLED RAILS AND STILES
COLOR: BLACK ANODIZED
GLASS: CLEAR, 1/2" INSULATED



| DOOR SCHEDULE | | | | | | | | | | | | | | | | | | | |
|---------------|----------------|----------------|-----------------|--------------------|------------------|------------------------|-----------------------------------|--------------|--------------|--------------------------|---------|---------|----------|-----------------------|-----------------------|-------|--------------|---------|-------------|
| FLOOR | DOOR NUMBER | TYPE | CARD READER | ROOM NUMBER / NAME | DOOR DESCRIPTION | | | DOOR | FRAME | | | DETAILS | | | | LABEL | HARDWARE SET | REMARKS | DOOR NUMBER |
| | | | | | MATERIAL | FINISH | SIZE - WIDTH X HEIGHT X THICKNESS | | MATERIAL | FINISH | ELEV | HEAD | JAMB | SILL | PARTITION | | | | |
| BASEMENT | B03A | DEMO EX. - NEW | | STAIR 'B' | HOLLOW METAL | PAINTED | 3'-0" X 7'-0" X 1 3/4" | A | HOLLOW METAL | PAINTED | 1 | 6/A9.20 | 6/A9.20 | 15/A9.20 | EXISTING MASONRY WALL | B/90 | 1 | B03A | |
| | B04A | DEMO EX. - NEW | | LANDLORD STORAGE | HOLLOW METAL | PAINTED | 3'-0" X 7'-0" X 1 3/4" | A | HOLLOW METAL | PAINTED | 1 | 6/A9.20 | 6/A9.20 | 15/A9.20 | EXISTING MASONRY WALL | - | 2 | B04A | |
| | B05A | DEMO EX. - NEW | | ELECTRICAL ROOM | HOLLOW METAL | PAINTED | 3'-0" X 7'-0" X 1 3/4" | A | HOLLOW METAL | PAINTED | - | 6/A9.20 | 6/A9.20 | 15/A9.20 | B | - | 3 | B05A | |
| | B06A | DEMO EX. - NEW | | WATER METER ROOM | HOLLOW METAL | PAINTED | 3'-0" X 7'-0" X 1 3/4" | A | HOLLOW METAL | PAINTED | 1 | 6/A9.20 | 6/A9.20 | 15/A9.20 | EXISTING MASONRY WALL | - | 4 | B06A | |
| | B08A | NEW | | TOILET | HOLLOW METAL | PAINTED | 3'-0" X 7'-0" X 1 3/4" | A | HOLLOW METAL | PAINTED | 1 | - | - | - | B | - | 5 | B08A | |
| | B09A | NEW | | TOILET | HOLLOW METAL | PAINTED | 3'-0" X 7'-0" X 1 3/4" | A | HOLLOW METAL | PAINTED | 1 | - | - | - | B | - | 5 | B09A | |
| | B10A | NEW | | ROOM #1 | HOLLOW METAL | PAINTED | 3'-0" X 7'-0" X 1 3/4" | A | HOLLOW METAL | PAINTED | 1 | - | - | - | B | - | 2 | B10A | |
| | B11A | NEW | | ROOM #2 | HOLLOW METAL | PAINTED | 3'-0" X 7'-0" X 1 3/4" | A | HOLLOW METAL | PAINTED | 1 | - | - | - | B | - | 2 | B11A | |
| | B12A | NEW | | ROOM #3 | HOLLOW METAL | PAINTED | 3'-0" X 7'-0" X 1 3/4" | A | HOLLOW METAL | PAINTED | 1 | - | - | - | B | - | 2 | B12A | |
| | B13A | NEW | | GAS METER ROOM | HOLLOW METAL | PAINTED | 3'-0" X 7'-0" X 1 3/4" | A | HOLLOW METAL | PAINTED | 1 | - | - | - | B | - | 6 | B13A | |
| 1ST FLOOR | 102A | NEW | | ELEVATOR LOBBY | HOLLOW METAL | PAINTED | 3'-0" X 7'-0" X 1 3/4" | A | HOLLOW METAL | PAINTED | 1 | 6/A9.20 | 6/A9.20 | 15/A9.20 | EXISTING MASONRY WALL | B/90 | 8 | 102A | |
| | 102B | NEW | | ELEVATOR LOBBY | HOLLOW METAL | PAINTED | 3'-0" X 7'-0" X 1 3/4" | C | HOLLOW METAL | PAINTED | 1 | 6/A9.20 | 6/A9.20 | 15/A9.20 | EXISTING MASONRY WALL | - | 8 | 102A | |
| | 103A | NEW | | TOILET | WOOD | STAINED | 3'-0" X 7'-0" X 1 3/4" | A | KNOCK-DOWN | PREFINISHED BAKED ENAMEL | 1 | - | - | - | B | - | 5 | 103A | |
| | 104A | NEW | | STAIR 'B' | HOLLOW METAL | PAINTED | 3'-0" X 7'-0" X 1 3/4" | C | HOLLOW METAL | PAINTED | 1 | 6/A9.20 | 6/A9.20 | 15/A9.20 | EXISTING MASONRY WALL | B/90 | 9 | 104A | |
| | 104B | NEW | | STAIR 'B' | HOLLOW METAL | PAINTED | 3'-0" X 7'-0" X 1 3/4" | B-1 | HOLLOW METAL | PAINTED | 1 | 6/A9.20 | 6/A9.20 | 15/A9.20 | EXISTING MASONRY WALL | B/90 | 10 | 104B | |
| | 104C | NEW | | STAIR 'B' | HOLLOW METAL | PAINTED | 3'-0" X 7'-0" X 1 3/4" | B-1 | HOLLOW METAL | PAINTED | 1 | 6/A9.20 | 6/A9.20 | 15/A9.20 | EXISTING MASONRY WALL | B/90 | 9 | 104C | |
| | 105A | NEW | | MECHANICAL ROOM | WOOD | STAINED | 3'-0" X 7'-0" X 1 3/4" | A | HOLLOW METAL | PAINTED | 1 | - | - | - | B | C/20 | 4 | 105A | |
| | 107A | | | | | | | | | | | | | | | | | | |
| | 109A | DEMO EX. - NEW | | STAIR 'A' | HOLLOW METAL | PAINTED | 3'-0" X 7'-0" X 1 3/4" | B-1 | HOLLOW METAL | PAINTED | 1 | 6/A9.20 | 6/A9.20 | 15/A9.20 | EXISTING MASONRY WALL | B/90 | 9 | 109A | |
| | 109B | NEW | | STAIR 'A' | HOLLOW METAL | PAINTED | 3'-0" X 7'-0" X 1 3/4" | C | HOLLOW METAL | PAINTED | 1 | 6/A9.20 | 6/A9.20 | 15/A9.20 | EXISTING MASONRY WALL | B/90 | 10 | 109B | |
| 109C | DEMO EX. - NEW | | STAIR 'A' | HOLLOW METAL | PAINTED | 3'-0" X 7'-0" X 1 3/4" | B-1 | HOLLOW METAL | PAINTED | 1 | 6/A9.20 | 6/A9.20 | 15/A9.20 | EXISTING MASONRY WALL | B/90 | 9 | 109C | | |
| 110A | NEW | | MECHANICAL ROOM | WOOD | STAINED | 3'-0" X 7'-0" X 1 3/4" | A | HOLLOW METAL | PAINTED | 1 | - | - | - | B | C/20 | 4 | 110A | | |
| 2ND FLOOR | 202A | NEW | | ELEVATOR LOBBY | HOLLOW METAL | PAINTED | (2) 3'-0" X 7'-0" X 1 3/4" | B | HOLLOW METAL | PAINTED | 1 | - | - | - | B | C/20 | 11 | 202A | |
| | 203A | NEW | | TOILET | KNOCK-DOWN | STAINED | 3'-0" X 7'-0" X 1 3/4" | A | KNOCK-DOWN | PREFINISHED BAKED ENAMEL | 1 | - | - | - | B | - | 5 | 203A | |
| | 204A | NEW | | STAIR 'B' | HOLLOW METAL | PAINTED | 3'-0" X 7'-0" X 1 3/4" | B-1 | HOLLOW METAL | PAINTED | 1 | - | - | - | EXISTING MASONRY WALL | B/90 | 1 | 204A | |
| | 205A | NEW | | MECHANICAL ROOM | WOOD | STAINED | 3'-0" X 7'-0" X 1 3/4" | A | HOLLOW METAL | PAINTED | 1 | - | - | - | B | C/20 | 4 | 205A | |
| | 209A | NEW | | STAIR 'A' | HOLLOW METAL | PAINTED | 3'-0" X 7'-0" X 1 3/4" | B-1 | HOLLOW METAL | PAINTED | 1 | - | - | - | EXISTING MASONRY WALL | B/90 | 1 | 209A | |
| 3RD FLOOR | 302A | NEW | | ELEVATOR LOBBY | HOLLOW METAL | PAINTED | (2) 3'-0" X 7'-0" X 1 3/4" | B | HOLLOW METAL | PAINTED | 1 | - | - | - | B | C/20 | 11 | 302A | |
| | 303A | NEW | | TOILET | KNOCK-DOWN | STAINED | 3'-0" X 7'-0" X 1 3/4" | A | KNOCK-DOWN | PREFINISHED BAKED ENAMEL | 1 | - | - | - | B | - | 5 | 303A | |
| | 304A | NEW | | STAIR 'B' | HOLLOW METAL | PAINTED | 3'-0" X 7'-0" X 1 3/4" | B-1 | HOLLOW METAL | PAINTED | 1 | - | - | - | EXISTING MASONRY WALL | B/90 | 1 | 304A | |
| | 305A | NEW | | MECHANICAL ROOM | WOOD | STAINED | 3'-0" X 7'-0" X 1 3/4" | A | HOLLOW METAL | PAINTED | 1 | - | - | - | B | C/20 | 4 | 305A | |
| | 309A | NEW | | STAIR 'A' | HOLLOW METAL | PAINTED | 3'-0" X 7'-0" X 1 3/4" | B-1 | HOLLOW METAL | PAINTED | 1 | - | - | - | EXISTING MASONRY WALL | B/90 | 1 | 309A | |
| 4TH FLOOR | 402A | NEW | | ELEVATOR LOBBY | HOLLOW METAL | PAINTED | (2) 3'-0" X 7'-0" X 1 3/4" | B | HOLLOW METAL | PAINTED | 1 | - | - | - | B | C/20 | 11 | 402A | |
| | 403A | NEW | | TOILET | KNOCK-DOWN | STAINED | 3'-0" X 7'-0" X 1 3/4" | A | KNOCK-DOWN | PREFINISHED BAKED ENAMEL | 1 | - | - | - | B | - | 5 | 403A | |
| | 404A | NEW | | STAIR 'B' | HOLLOW METAL | PAINTED | 3'-0" X 7'-0" X 1 3/4" | B-1 | HOLLOW METAL | PAINTED | 1 | - | - | - | EXISTING MASONRY WALL | B/90 | 1 | 404A | |
| | 405A | NEW | | MECHANICAL ROOM | WOOD | STAINED | 3'-0" X 7'-0" X 1 3/4" | A | HOLLOW METAL | PAINTED | 1 | - | - | - | B | C/20 | 4 | 405A | |
| | 409A | NEW | | STAIR 'A' | HOLLOW METAL | PAINTED | 3'-0" X 7'-0" X 1 3/4" | B-1 | HOLLOW METAL | PAINTED | 1 | - | - | - | EXISTING MASONRY WALL | B/90 | 1 | 409A | |



10/07/21 Historic Commission
10/07/21 Elevator Revisions
06/01/21 Permits
05/23/21 Owner Review
02/01/21 Permits (VOID)

Date: Issued For:

**Kaul Glove Building
Renovation & Adaptive Reuse**

1441 Brooklyn
Detroit, Michigan 48226

studioONE : DETROIT

architectural | urban | interior | DESIGN

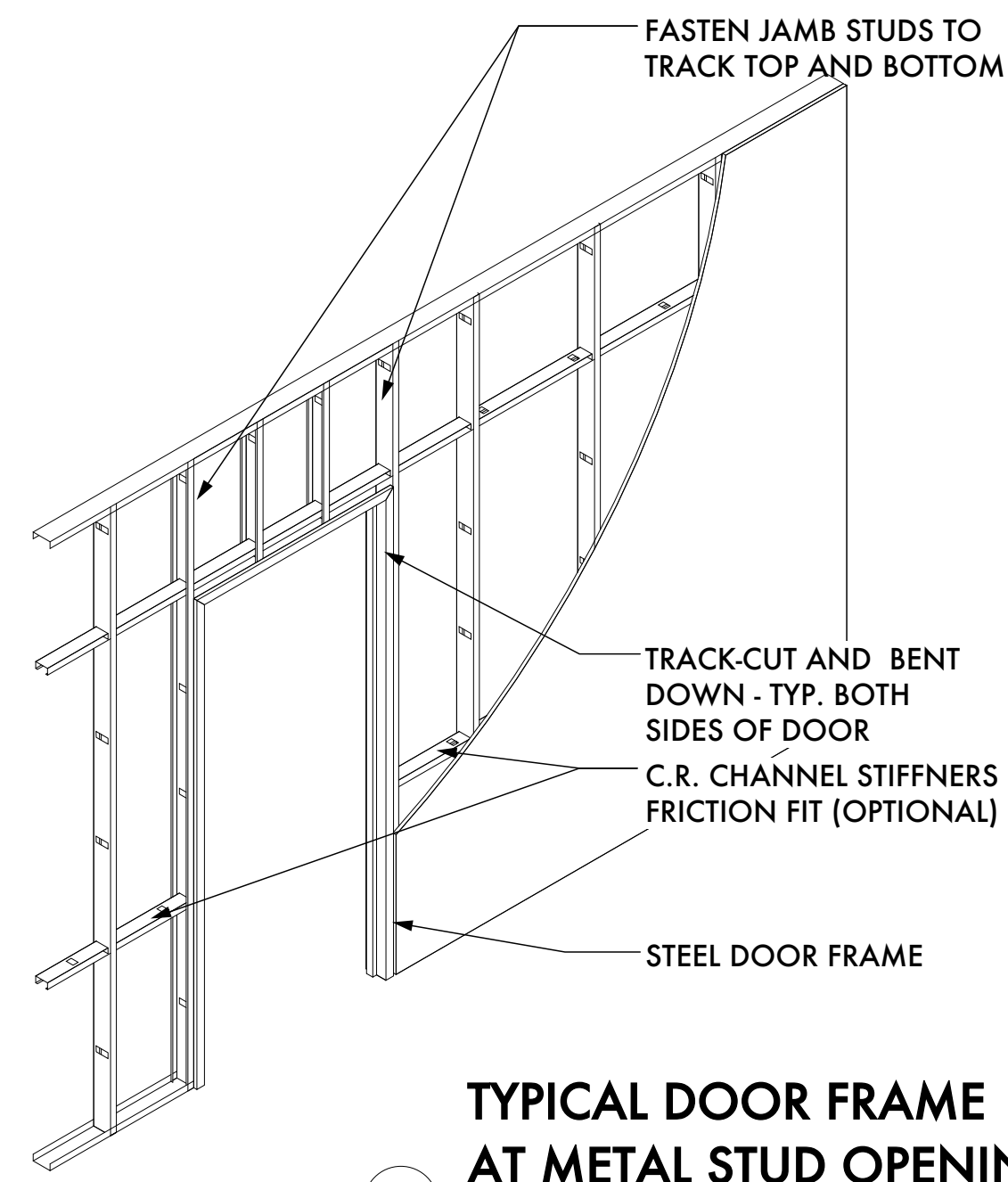
330 Madison Avenue
4th Floor
Detroit, Michigan 48226
313.549.2790 [p]
gbd@www.studioone.com
studio@detroitmi.com

Project Number: 2020-03
Sheet Title:

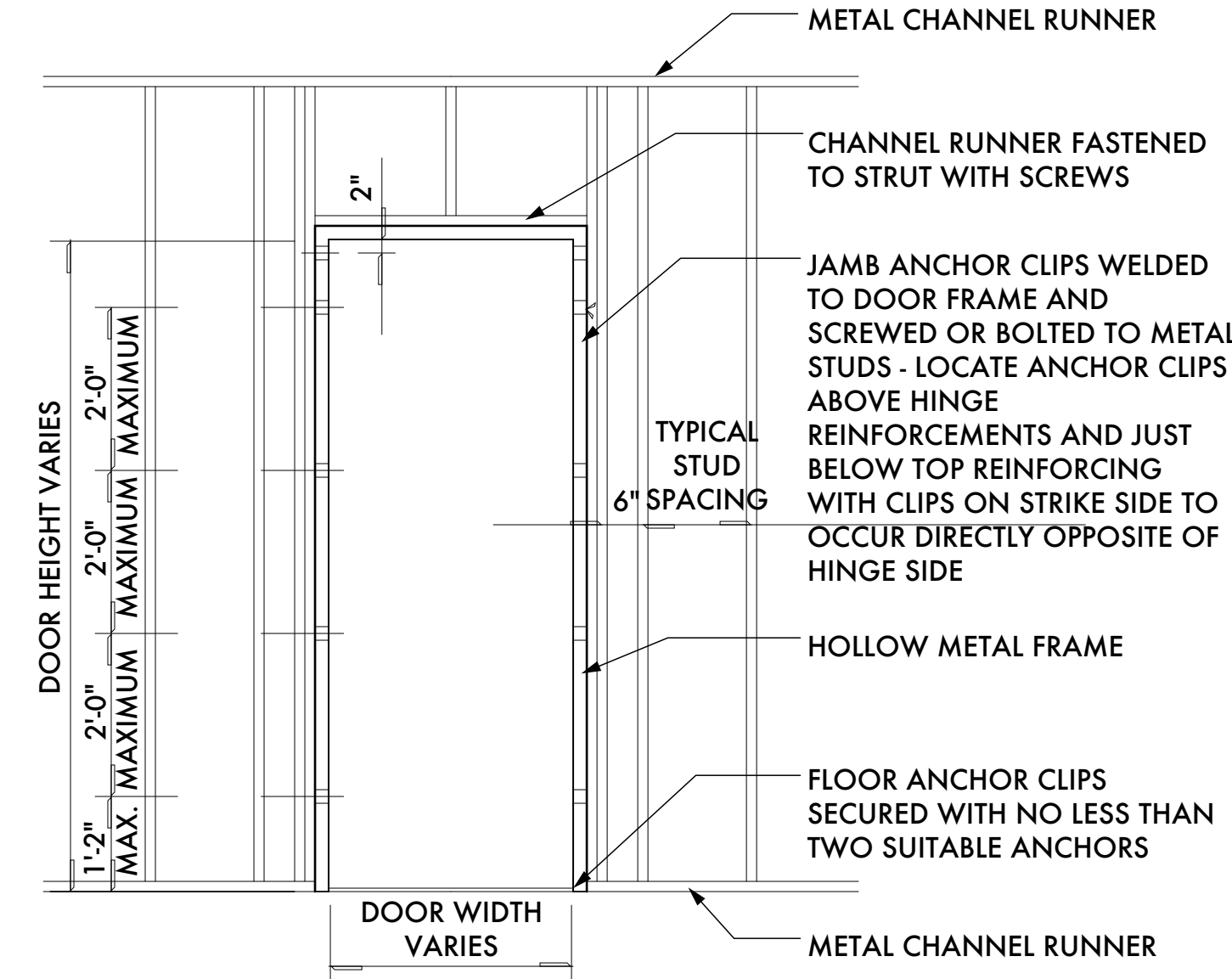
**DOOR HARDWARE
SCHEDULE**

Sheet Number:
A9.20

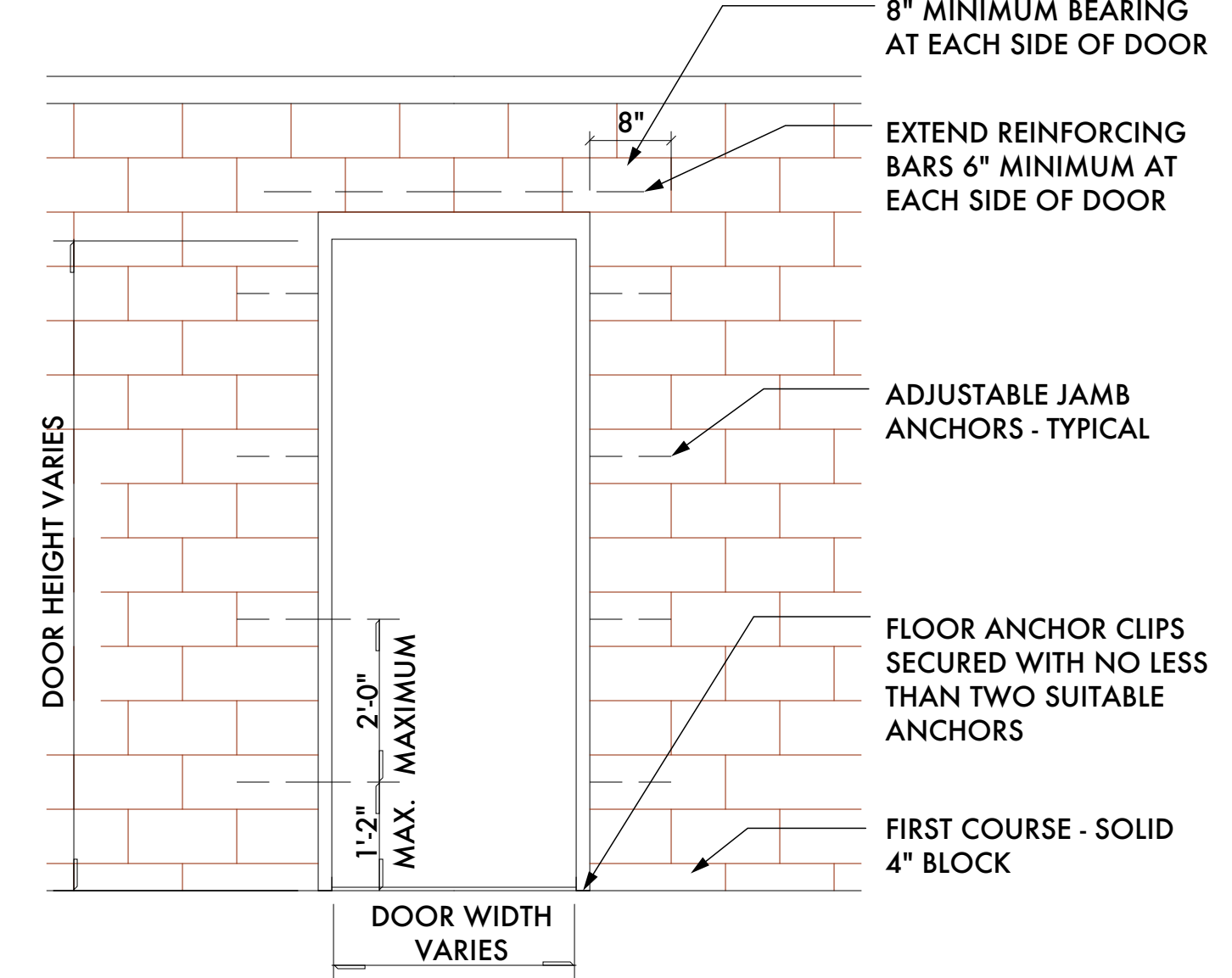
© 2021 studioONE, llc



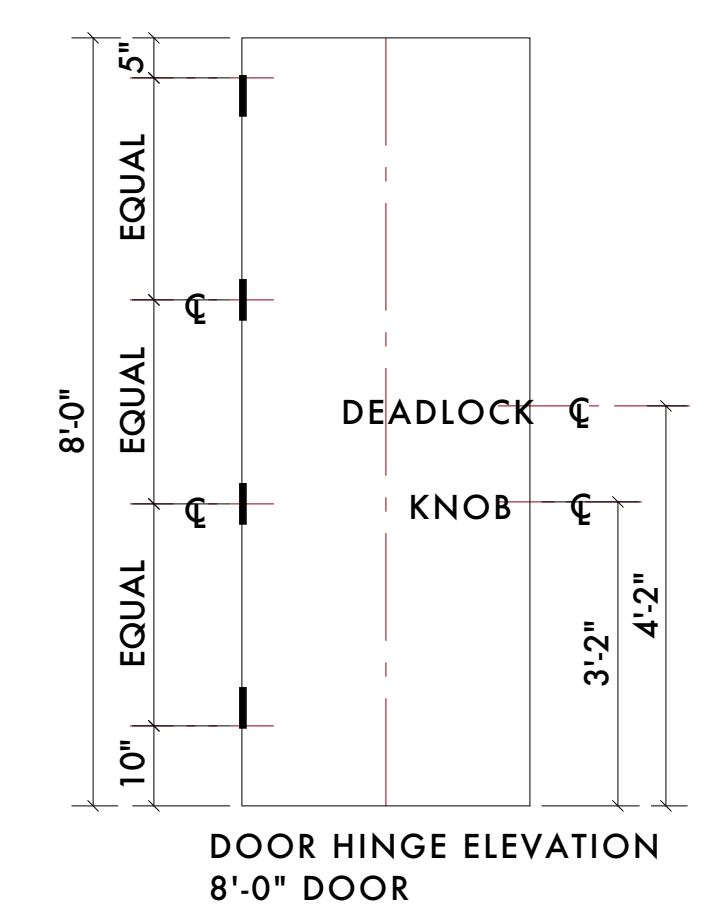
14 TYPICAL DOOR FRAME AT METAL STUD OPENING



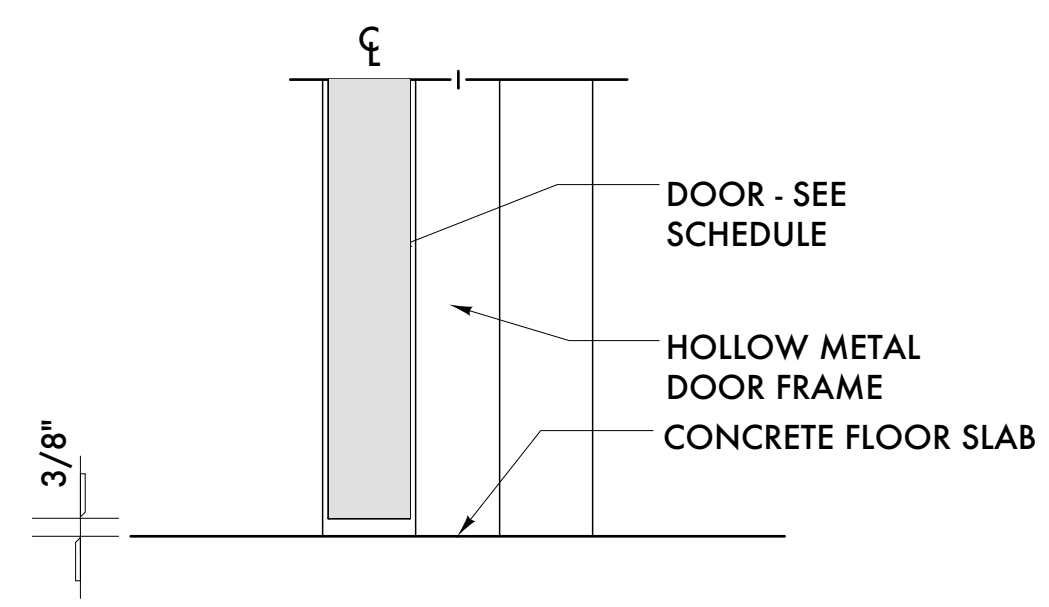
13 TYPICAL DOOR FRAME AT METAL STUD OPENING



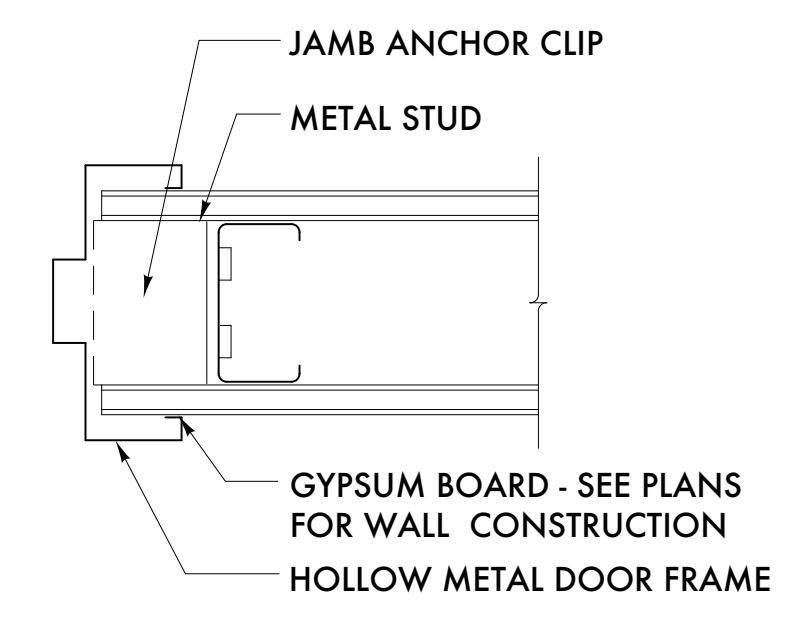
12 TYPICAL DOOR FRAME AT MASONRY OPENING



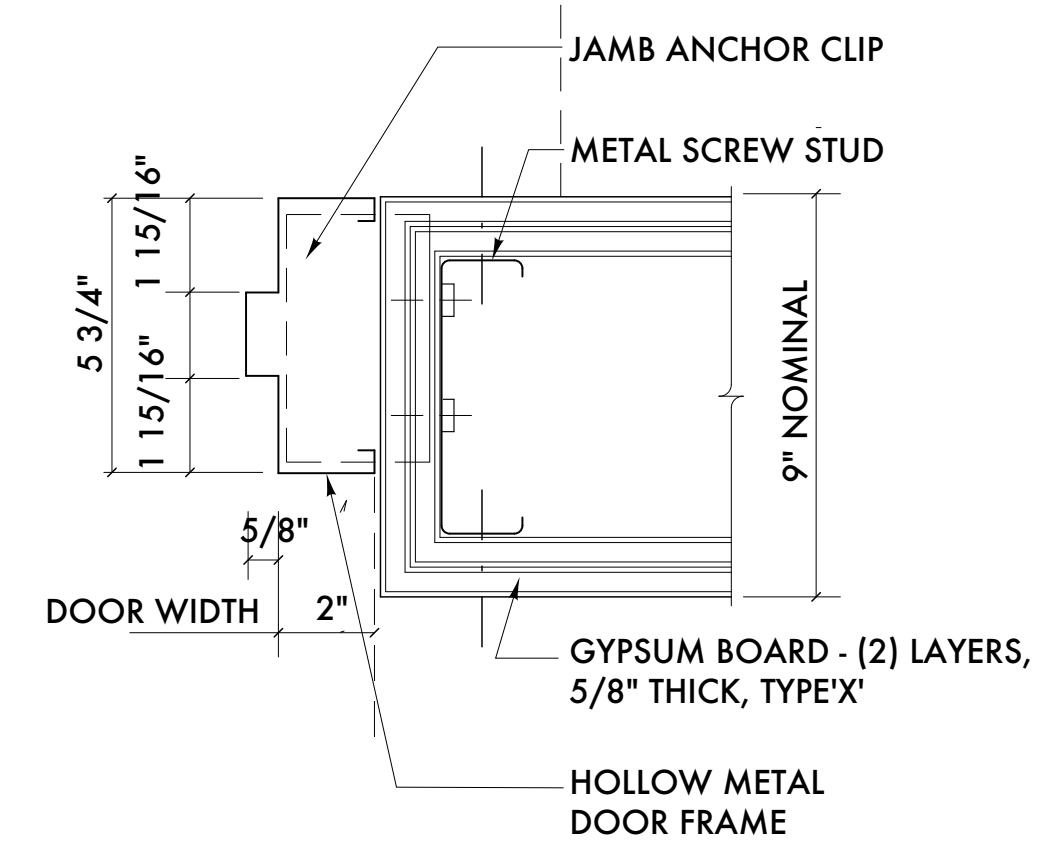
11 DOOR HINGE LOCATIONS



15 DOOR SILL TRANSITION W/ CONCRETE BOTH SIDES



7 DETAIL AT DOOR JAMB/HEAD AT GYPSUM BOARD WALL



6 DETAIL AT DOOR JAMB/HEAD AT GYPSUM BOARD WALL

Kaul Glove Building - 08 71 00 Door Hardware Specifications

| Hardware Set 9 - Rim Panic w/ Classroom Trim [Lock / Unlock] + Closer | | | |
|---|---|-----|--------|
| 3 ea. | Butt Hinge 35STBB 4545 NRP | 26D | PDQ |
| 1 ea. | Rim Panic Device 6200RF | 32D | PDQ |
| 1 ea. | Classroom Trim 6EW 08 PHL | 26D | PDQ |
| 1 ea. | Closer 7101 BC EDA (push side mount) | 689 | PDQ |
| 1 ea. | Kickplate 90 10 x 2" LDW B4E | 32D | Don Jo |
| 1 ea. | Wall / Floor Stop - 1407 / 1441 -type as required | 26D | Don Jo |

| Hardware Set 10 - Rim Panic w/ Classroom Trim [Lock / Unlock] + Closer Stop | | | |
|---|---|-----|--------|
| 3 ea. | Butt Hinge 35STBB 4545 NRP | 26D | PDQ |
| 1 ea. | Rim Panic Device 6200RF | 32D | PDQ |
| 1 ea. | Classroom Trim 6EW 08 PHL | 26D | PDQ |
| 1 ea. | Closer 7101 BC SCS Stop (push side mount) | 689 | PDQ |
| 1 ea. | Kickplate 90 10 x 2" LDW B4E | 32D | Don Jo |
| 1 ea. | Threshold S205A | AL | Reese |
| 1 ea. | Sweep 354C -Mount pull side | AL | Reese |
| 1 set | Weatherstrip by 855C (mount prior to closer shoe) | AL | Reese |
| 1 ea. | Rain Drip 201C | AL | Reese |

| Hardware Set 11 -Auto-Flushbolts + Passage Set (Always Unlocked) + Closer Stops | | | |
|---|---|-------|--------|
| 6 ea. | Butt Hinge 35STBB 4545 NRP | 26D | PDQ |
| 1 set | HM Automatic Door Flushbolts 93102 | 26D | PDQ |
| 1 ea. | Dust Proof Strike 909 | 26D | PDQ |
| 1 ea. | Passage Set GT 126 PHL FRL | 26D | PDQ |
| 1 ea. | Coordinator CORXX x 2 Mounting Brackets MB0X + Filler | 689 | PDQ |
| 2 ea. | Closer 7101BC SCS Stop (push side mount) | 689 | PDQ |
| 2 ea. | Kickplate 90 10 x 2" LDW B4E | 32D | Don Jo |
| 1 set | Smoke Seal 797B | Black | Reese |
| 1 set | Smoke Flex Astragals 964C x 964C | AL | Reese |

END OF SECTION 08 71 00

Kaul Glove Building - 08 71 00 Door Hardware Specifications

| Hardware Set 4 - Storeroom Lock [Always Locked] + Closer Stop | | | |
|---|---|-------|--------|
| 3 ea. | Butt Hinge 35STBB 4545 NRP | 26D | PDQ |
| 1 ea. | Storeroom Lockset GT 115 PHL | 26D | PDQ |
| 1 ea. | Closer 7101BC PA SCS Stop (push side mount) | 689 | PDQ |
| 1 ea. | Kickplate 90 10 x 2" LDW B4E | 32D | Don Jo |
| 1 set | Smoke Seal 797B | Black | Reese |

| Hardware Set 5 -Privacy Set [Lock / Unlock] + Closer | | | |
|--|--|-----|--------|
| 3 ea. | Butt Hinge 35STBB 4545 NRP | 26D | PDQ |
| 1 ea. | Privacy Set GT 176 PHL | 26D | PDQ |
| 1 ea. | Closer 5501BC PA regular arm (pull side mount) | 689 | PDQ |
| 1 ea. | Kickplate 90 10 x 2" LDW B4E | 32D | Don Jo |
| 1 ea. | Wall Stop 1407 | 26D | Don Jo |

| Hardware Set 6 - Storeroom Lock [Always Locked] + Closer | | | |
|--|--|-----|--------|
| 3 ea. | Butt Hinge 35STBB 4545 NRP | 26D | PDQ |
| 1 ea. | Storeroom Lockset GT 115 PHL | 26D | PDQ |
| 1 ea. | Closer 7101BC PA regular arm (pull side mount) | 689 | PDQ |
| 1 ea. | Kickplate 90 10 x 2" LDW B4E | 32D | Don Jo |
| 1 ea. | Wall Stop 1407 | 26D | Don Jo |

| Hardware Set 7 - Entry Lock [Lock / Unlock] + Closer | | | |
|--|--|-------|--------|
| 3 ea. | Butt Hinge 35STBB 4545 NRP | 32D | PDQ |
| 1 ea. | Entry Lock GT 116 PHL | 26D | PDQ |
| 1 ea. | Closer 7101BC PA regular arm (pull side mount) | 689 | PDQ |
| 1 ea. | Kickplate 90 10 x 2" LDW B4E | 32D | Don Jo |
| 1 ea. | Floor Stop 1441 | 26D | Don Jo |
| 1 set | Smoke Seal 797B | Black | Reese |

| Hardware Set 8 -Passage Set (Always Unlocked) + Closer | | | |
|--|-------------------------------------|-----|--------|
| 3 ea. | Butt Hinge 35STBB 4545 NRP | 26D | PDQ |
| 1 ea. | Passage Set GT 126 PHL | 26D | PDQ |
| 1 ea. | Closer 7101BC EDA (push side mount) | 689 | PDQ |
| 1 ea. | Kickplate 90 10 x 2" LDW B4E | 32D | Don Jo |
| 1 ea. | Wall Stop 1407 | 26D | Don Jo |

Kaul Glove Building - 08 71 00 Door Hardware Specifications

General notes:

- Contractor shall verify all existing field conditions and notify architect immediately if that which exists differs from that which is shown on drawings.
- All work to comply with current Federal, State and Local codes, laws and ordinances. The requirements of ICC/ANSI A117.1 and the Americans with disabilities act (ADA) are to be fully satisfied. All work shall meet the most stringent requirements of both including, but not limited to clearances, limitations, accessories, etc.
- These drawings are prepared in accordance with the limited services for which the architect was contracted. The architect makes no representation that the interpretation of these documents will result in complete compliance with the ADA.
- All doors required to be labeled shall be set in labeled frames and identified with UL label and be provided with approved self-closing devices and positive latching hardware.
- All designated exit doors shall be equipped with the required egress hardware.
- Furnish hardware as scheduled without substitution, no alternates will be approved.
- Provide combined cylinders and cut keys; keyed to owners' Master System. Include key conference and key system schedule. Furnish a keyed cylinder and two cut keys for each locking device specified.
- Provide one each Teikoo Regent Series Wall Key Cabinet. Provide a Complete System; including all accessories -key gathering envelopes, hook labels, permanent key tags, temporary key tags, signature receipt forms, visible index and instruction book. Provide with capacity for 150 percent of the number of locks required for the project.
- Furnish and provide all necessary reinforcements, brackets, fasteners, spacers and fillers to provide a complete functioning opening.
- Provide complete shop drawings, submittals and cut sheets complying with DHI prescribed methods and vertical format double spaced hardware schedule.
- Hardware Sets:

| Hardware Set 1 - Rim Panic w/ Passage Trim [Always Unlocked] + Closer | | | |
|---|---|-----|--------|
| 3 ea. | Butt Hinge 35STBB 4545 NRP | 26D | PDQ |
| 1 ea. | Rim Panic Device 6200RF | 32D | PDQ |
| 1 ea. | Passage Trim 6EW 14 PHL | 26D | PDQ |
| 1 ea. | Closer 7101BC PA regular arm (pull side mount) | 689 | PDQ |
| 1 ea. | Kickplate 90 10 x 2" LDW B4E | 32D | Don Jo |
| 1 ea. | Wall / Floor Stop - 1407 / 1441 -type as required | 26D | Don Jo |

| Hardware Set 2 - Entry Lock [Lock / Unlock] | | | |
|---|----------------------------|-----|--------|
| 3 ea. | Butt Hinge 35STBB 4545 NRP | 32D | PDQ |
| 1 ea. | Entry Lock GT 116 PHL | 26D | PDQ |
| 1 ea. | Wall Stop 1407 | 26D | Don Jo |

| Hardware Set 3 - Storeroom Lock [Always Locked] | | | |
|---|------------------------------|-----|--------|
| 3 ea. | Butt Hinge 35STBB 4545 NRP | 26D | PDQ |
| 1 ea. | Storeroom Lockset GT 115 PHL | 26D | PDQ |
| 1 ea. | Wall Stop 1407 | 26D | Don Jo |



06/01/21 Permits
05/23/21 Owner Review
02/01/21 Permits (VOID)
Date: Issued For:
Kaul Glove Building
Renovation & Adaptive Reuse
1441 Brooklyn
Detroit, Michigan 48226
studiozONE : DETROIT
architectural | DESIGN
urban | interior
330 Madison Avenue 313.549.2790 [p]
4th Floor gbd@www.bouae.com
Detroit, Michigan 48226 studiozonedetroit.com

Project Number: 2020-03
Sheet Title:

DOOR HARDWARE SPECIFICATION

Sheet Number:
A9.21
© 2021 studiozONE, llc