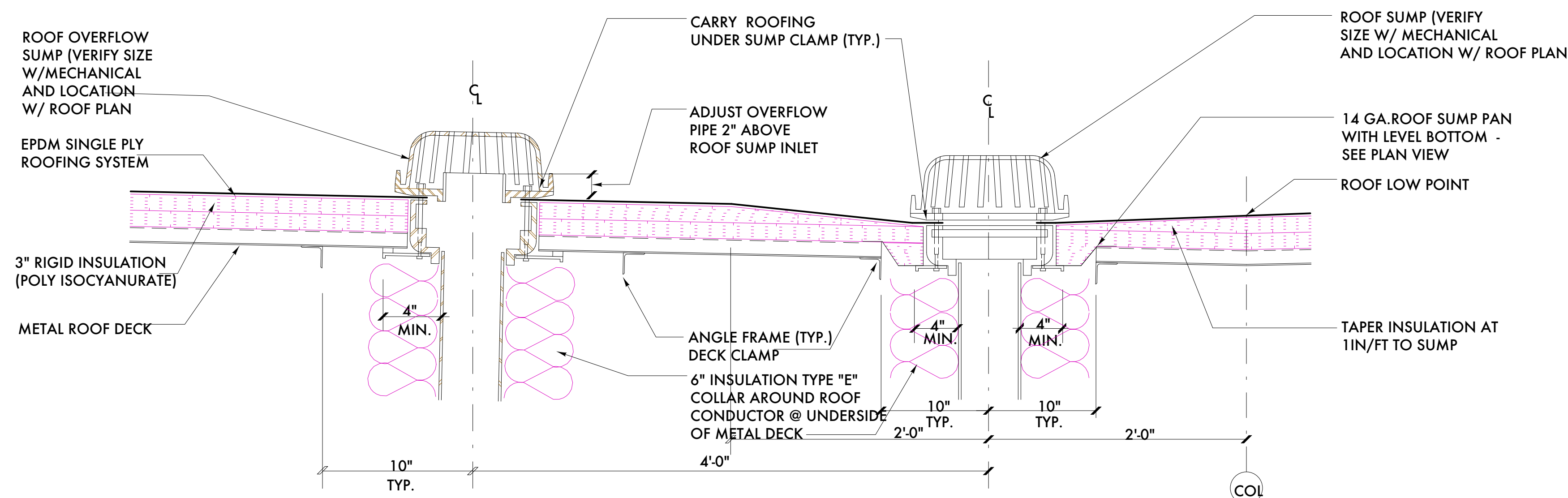
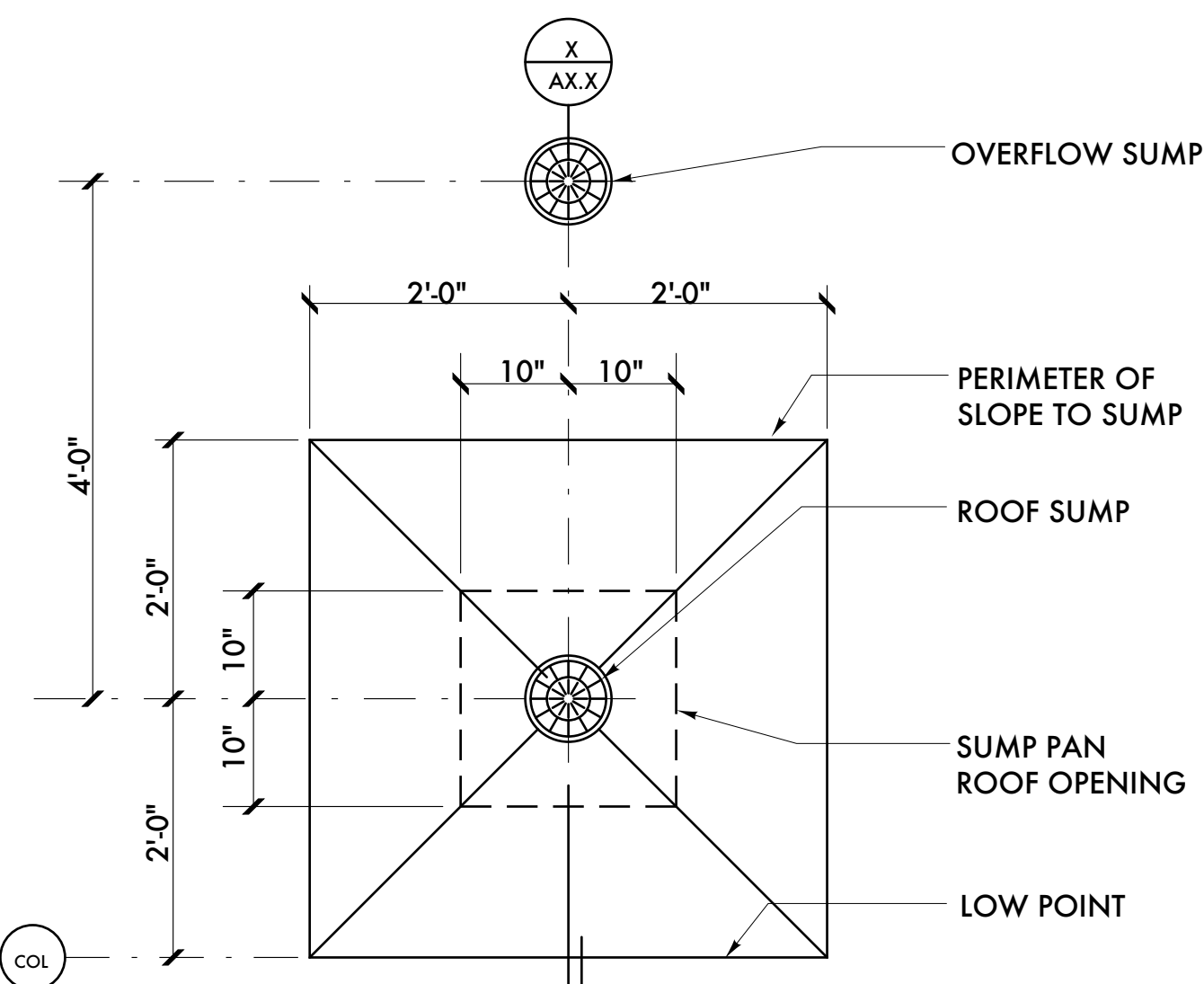


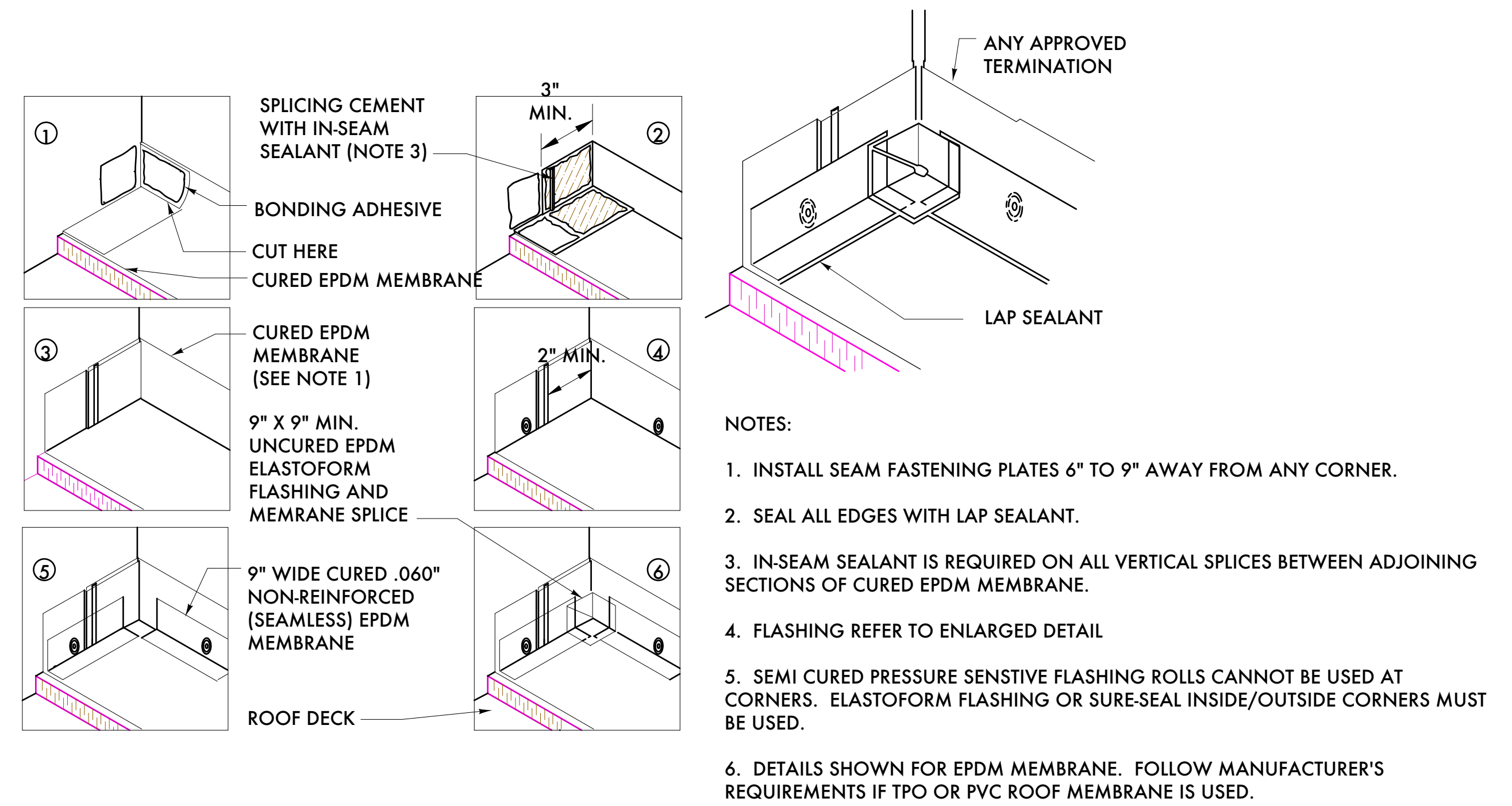
6 SECTION/DETAIL AT ROOF PARAPET  
 A7.11 SCALE: 3/4" = 1 - 0"



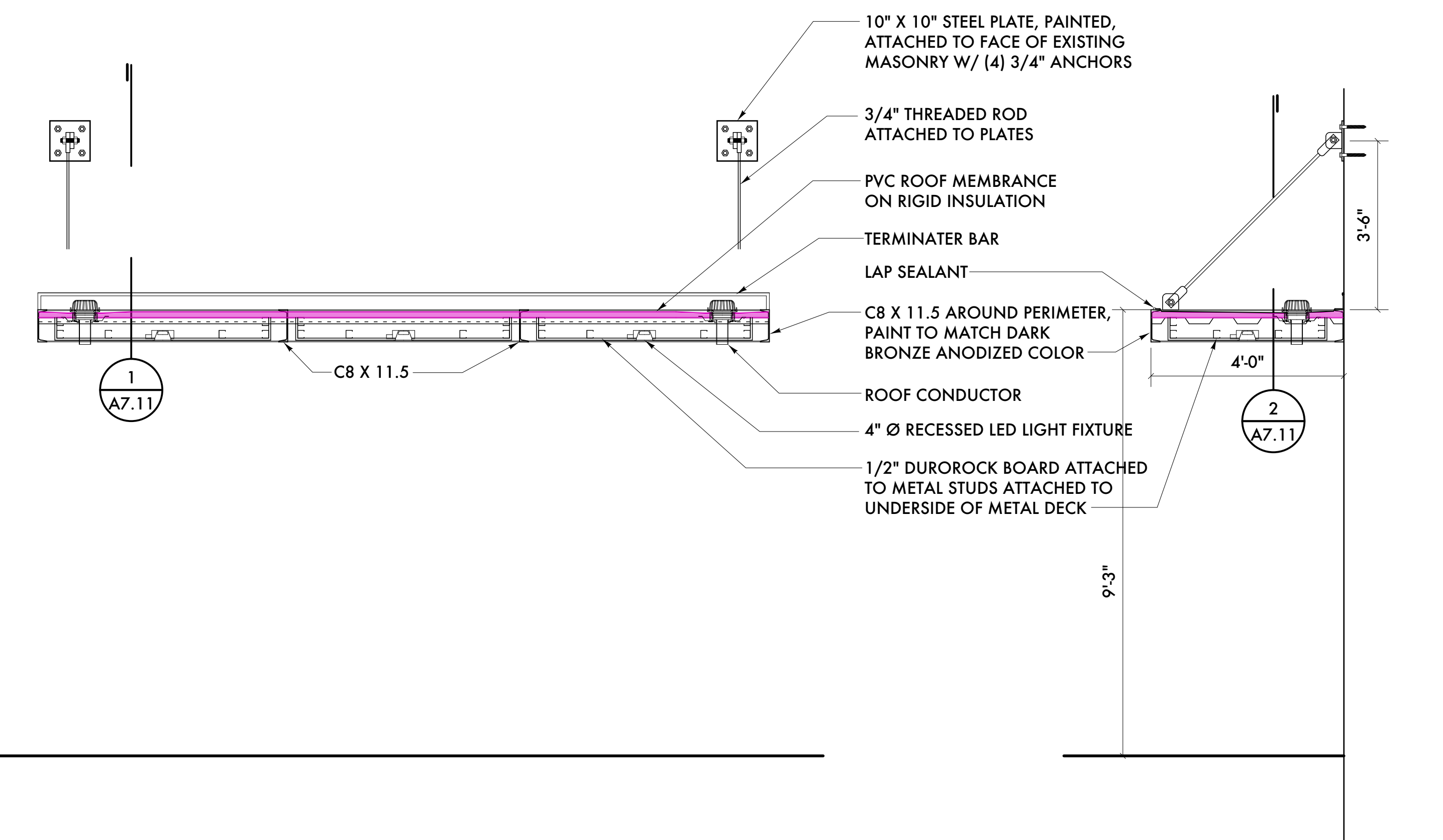
6 SECTION/DETAIL AT ROOF DRAIN  
 A7.11 SCALE: 1/2" = 1 - 0"



5 ROOF DRAIN PLAN DETAIL  
 A7.11 SCALE: 1/2" = 1 - 0"

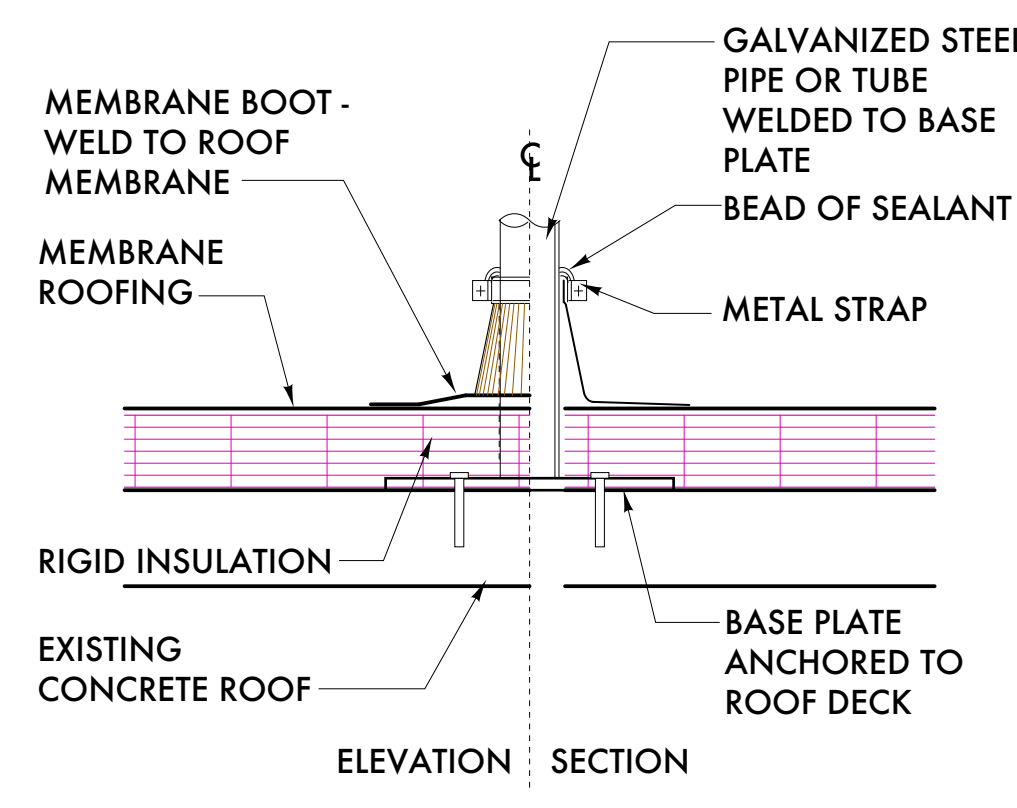


6 ROOF MEMBRANE DETAILS  
 A7.11 SCALE: 3/4" = 1 - 0"

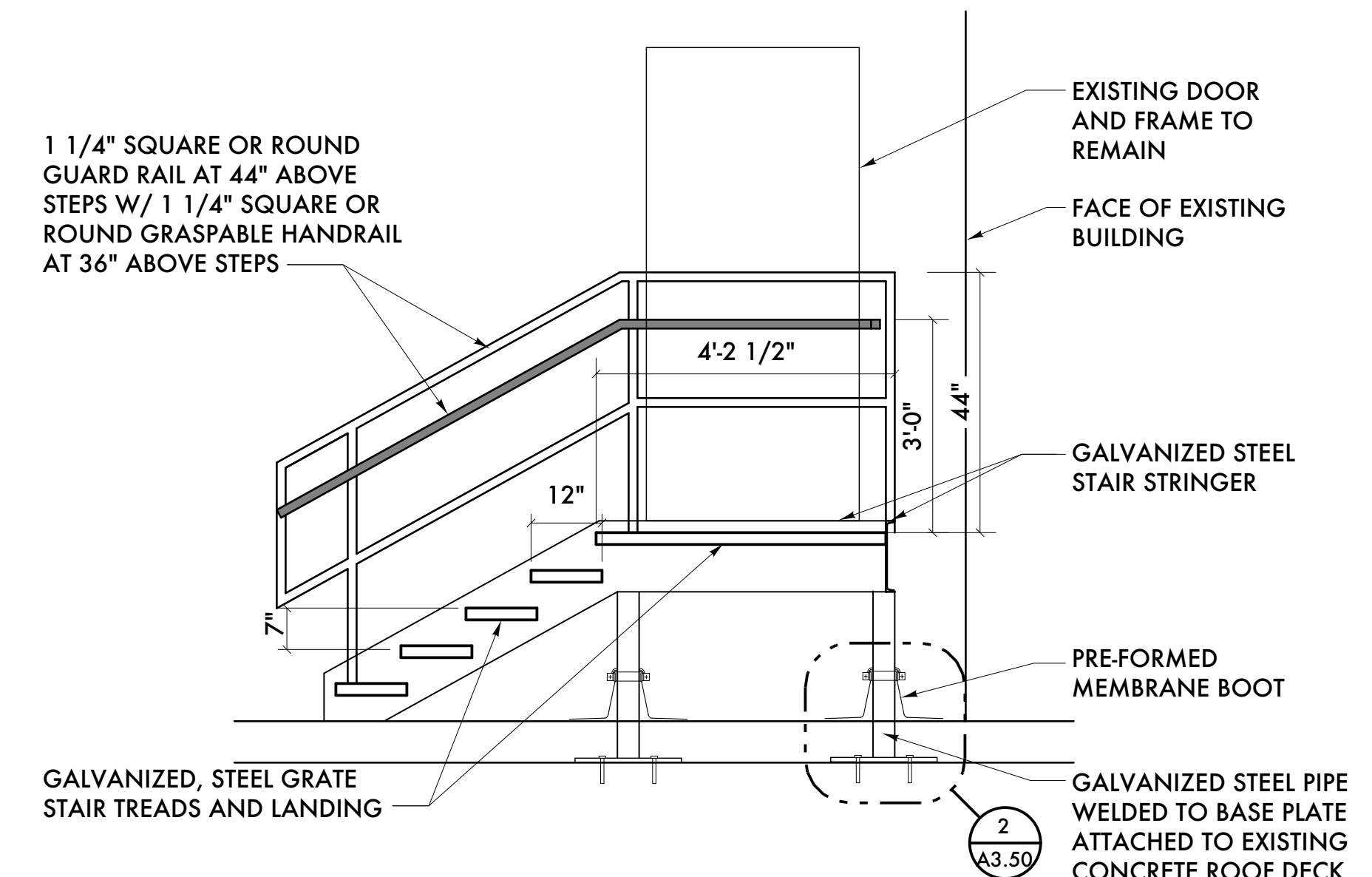


4 SECTION/DETAIL AT ALLEY ENTRANCE CANOPY  
 A7.11 SCALE: 1/2" = 1 - 0"

3 SECTION/DETAIL AT ALLEY ENTRANCE CANOPY  
 A7.11 SCALE: 1/2" = 1 - 0"



2 ROOF BOOT DETAIL  
 A7.11 SCALE: 1/2" = 1 - 0"



1 SECTION AT SERVICE STEPS  
 A7.11 SCALE: 1/2" = 1 - 0"



10/07/21 Historic Commission Review  
 09/06/21 ADD #2 - Code Review Comments  
 06/01/20 Permits  
 05/23/21 Owner Review  
 Date: Issued For:  
**Kaul Glove Building  
 Renovation & Adaptive Reuse**  
 1441 Brooklyn  
 Detroit, Michigan 48226  
**studiozONE : DETROIT**  
 architectural urban interior DESIGN  
 350 Madison Avenue  
 4th Floor  
 Detroit, Michigan 48226  
 studiozonedetroit.com  
 313.340.2760 | jpb@wade-house.com

Project Number: 2020 - 03  
 Sheet Title:  
**EXTERIOR DETAILS**