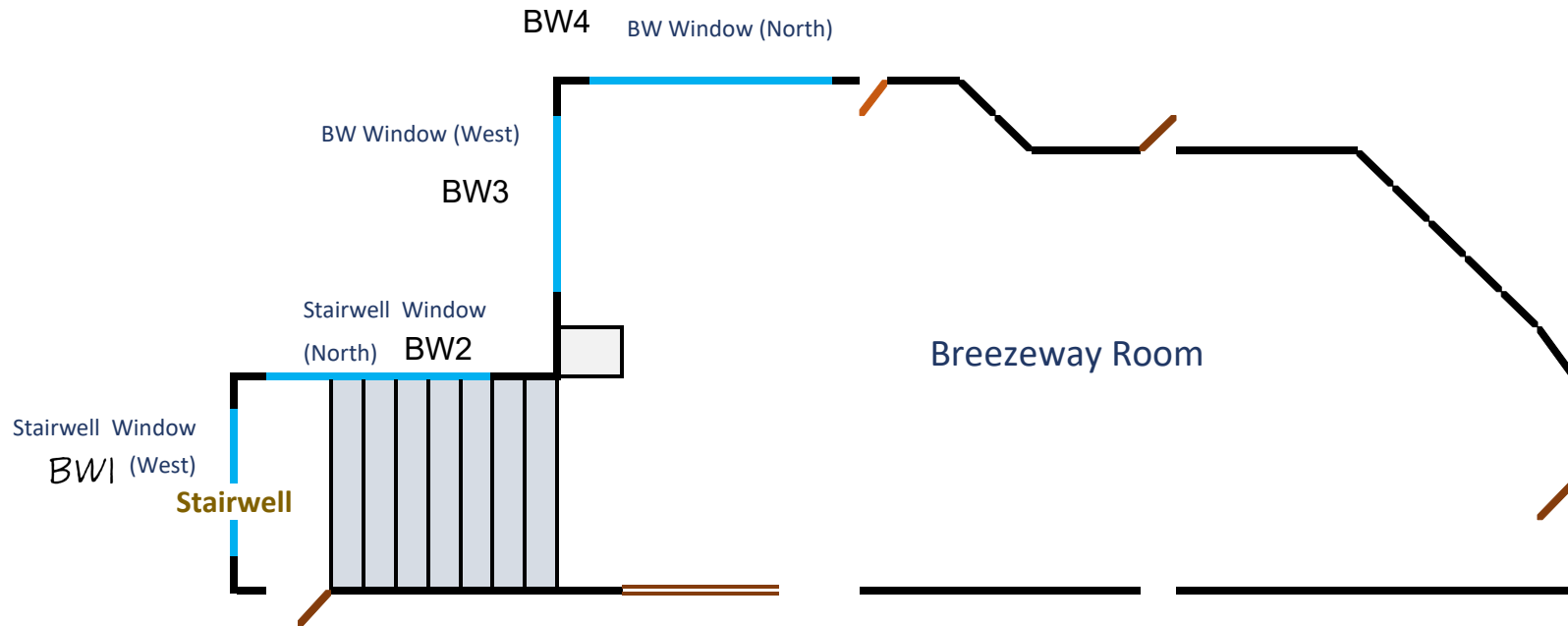


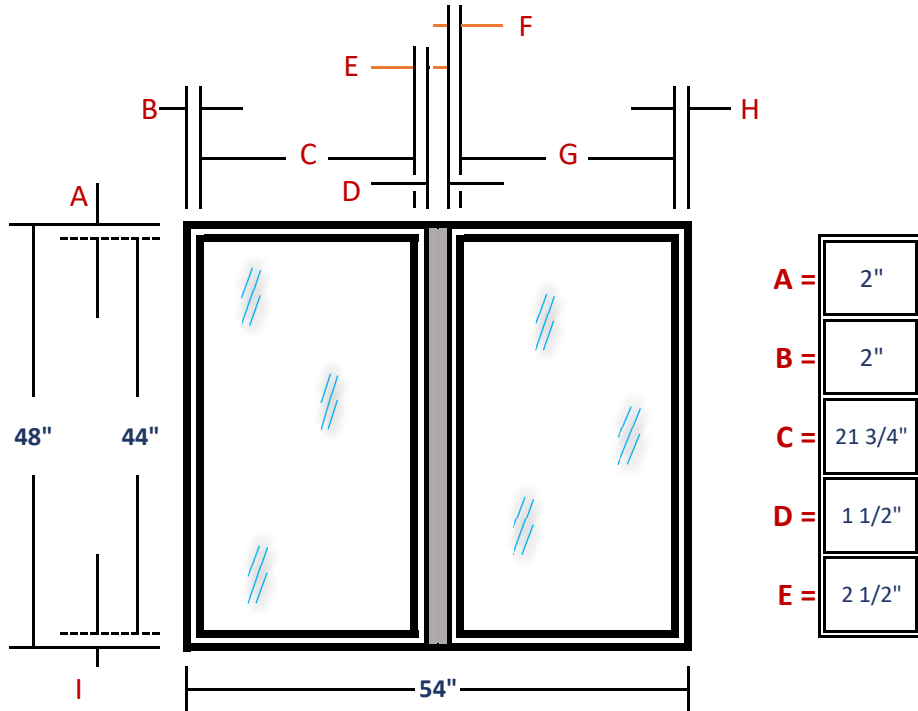
# Breezeway Room Layout



**Stairwell Window [West]**

**ORIGINAL!**

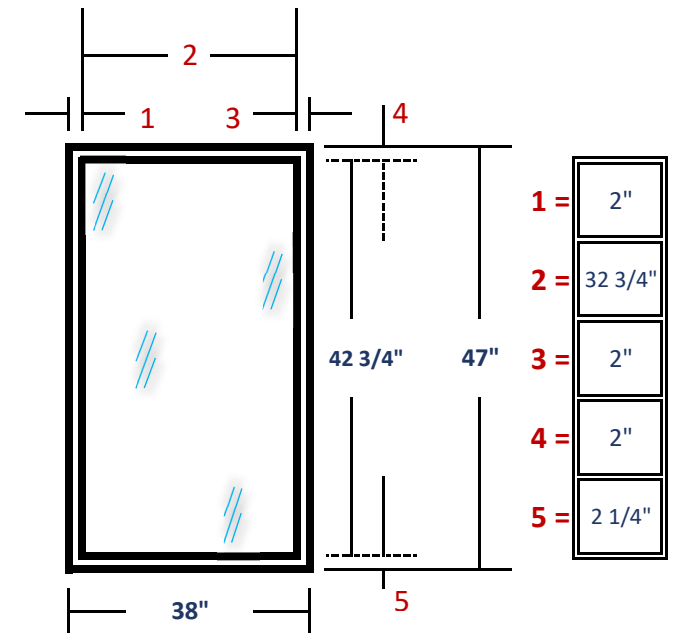
(Leading to Laundry Rm.)



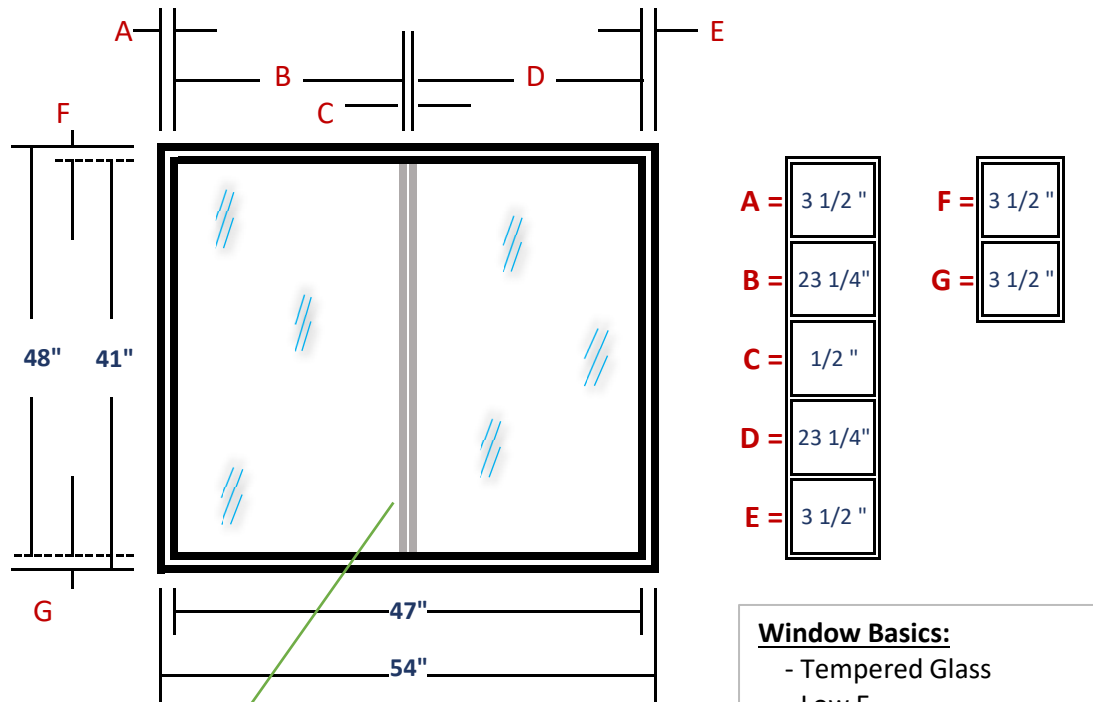
**Stairwell Window [North]**

**ORIGINAL!**

(Leading to Laundry Rm.)



**Stairwell Window [North]**      **Wallside Proposal**  
 (Leading to Laundry Rm.)

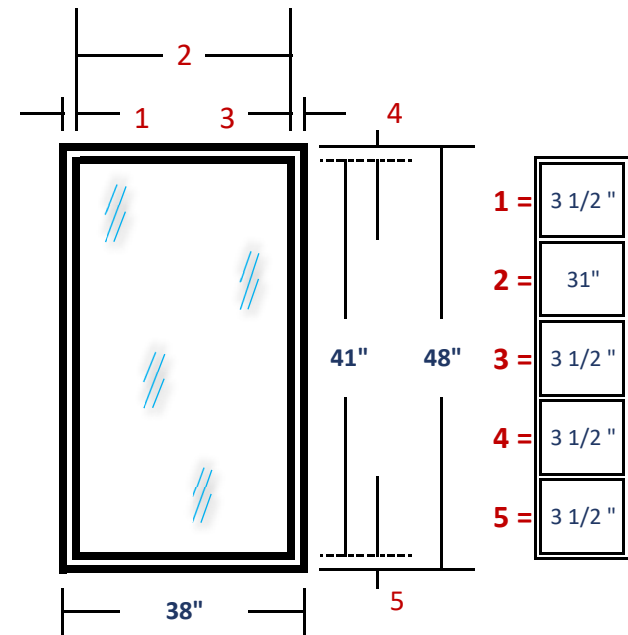


A =	3 1/2 "	F =	3 1/2 "
B =	23 1/4"	G =	3 1/2 "
C =	1/2 "		
D =	23 1/4"		
E =	3 1/2 "		

**Window Basics:**  
 - Tempered Glass  
 - Low E  
 - Double Pane

Mutin Grid

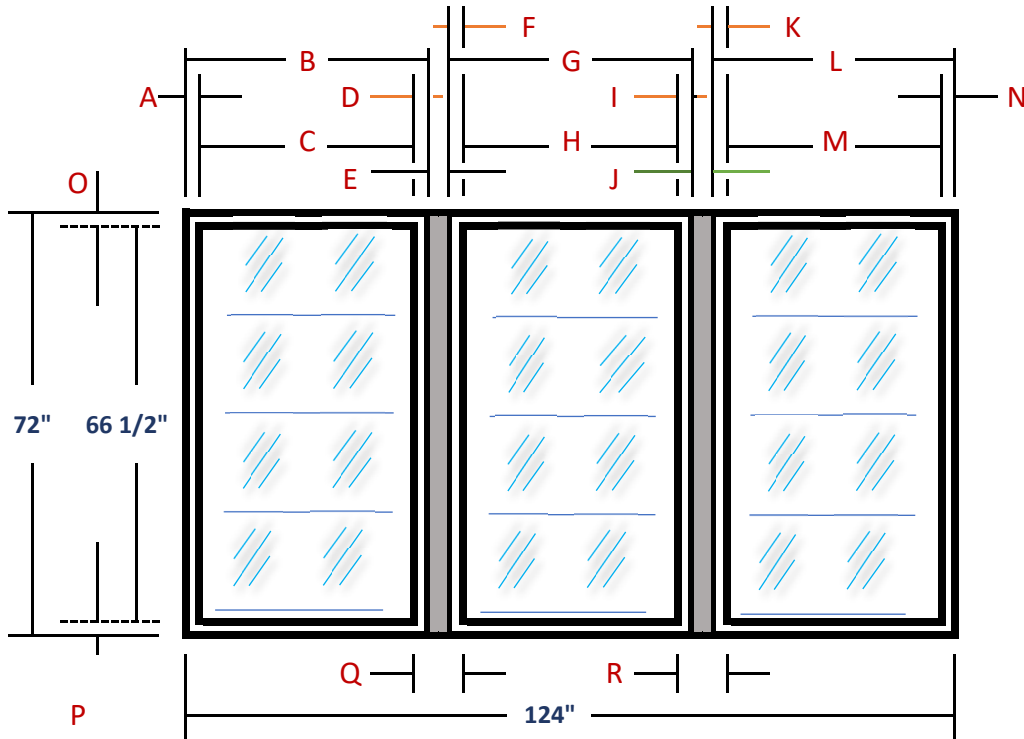
**Stairwell Window [West]**      **Wallside Proposal**  
 (Leading to Laundry Rm.)



1 =	3 1/2 "
2 =	31"
3 =	3 1/2 "
4 =	3 1/2 "
5 =	3 1/2 "

**Window Basics:**  
 - Tempered Glass  
 - Low E  
 - Double Pane

**Breezeway Rm. Window [West]**      **ORIGINAL!**  
 (Breezeway Room)



<b>A</b> =	2"
<b>B</b> =	40 1/2"
<b>C</b> =	36 1/2"
<b>D</b> =	2 1/2"
<b>E</b> =	1 1/2"

<b>F</b> =	2 1/2"
<b>G</b> =	40 1/2"
<b>H</b> =	36 1/2"
<b>I</b> =	2 1/2"
<b>J</b> =	1 1/2"

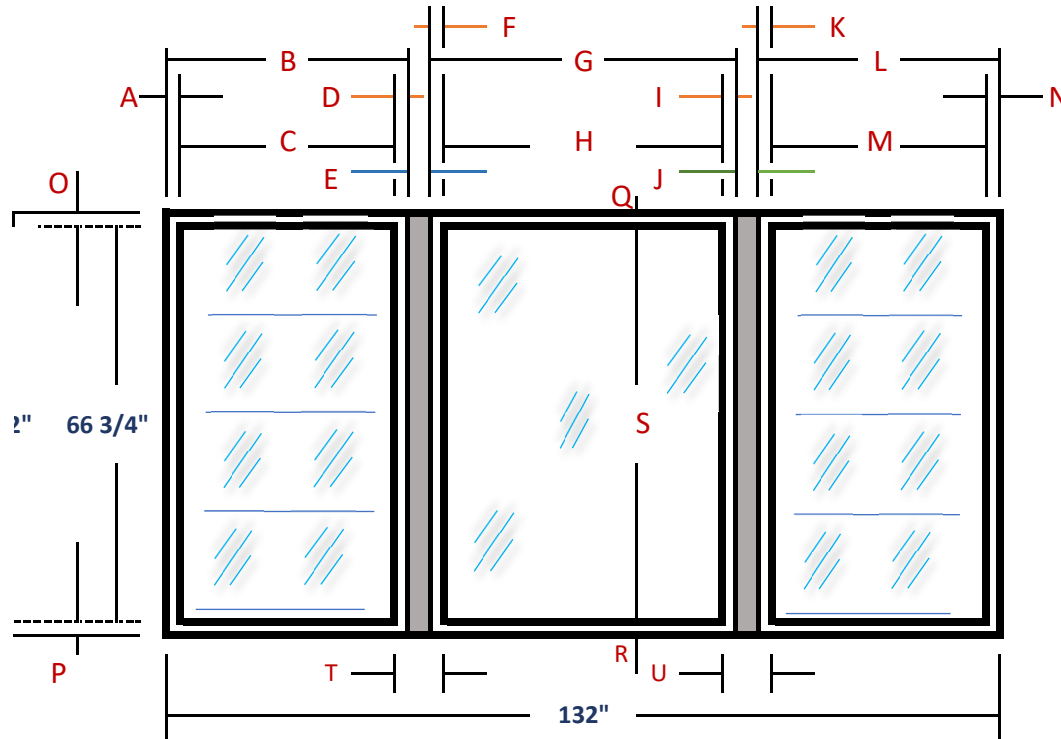
<b>K</b> =	2 1/2"
<b>L</b> =	40 1/2"
<b>M</b> =	36 1/2"
<b>N</b> =	2"
<b>O</b> =	1 7/8"

<b>P</b> =	2"
<b>Q</b> =	6 1/2"
<b>R</b> =	6 1/2"

**Breezeway Rm. Window [North]**

**ORIGINAL!**

(Breezeway Room)

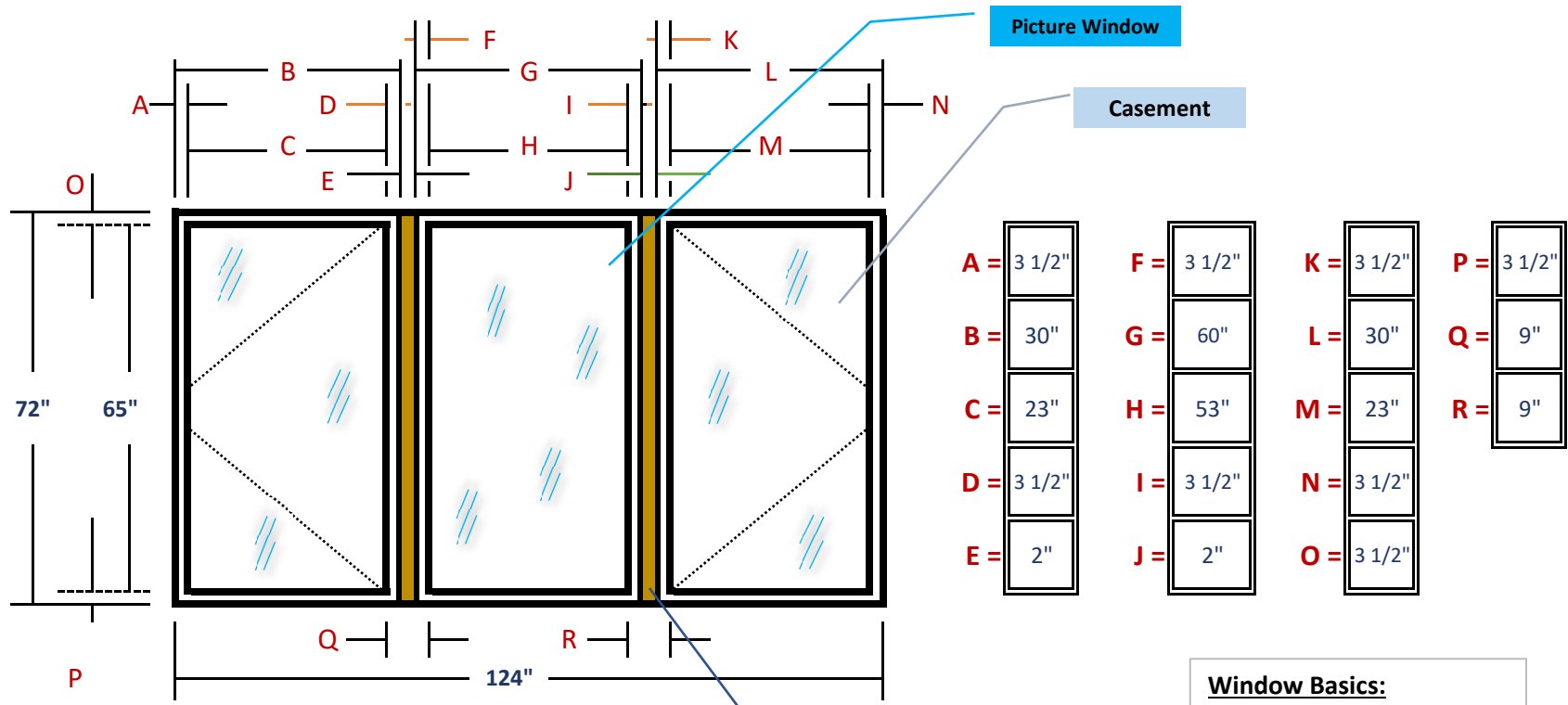


<b>A</b> =	1 1/2"	<b>G</b> =	59 3/4"	<b>M</b> =	36 1/2"	<b>S</b> =	68 3/4"
<b>B</b> =	40 1/2"	<b>H</b> =	57 1/2"	<b>N</b> =	2"	<b>T</b> =	6 1/2"
<b>C</b> =	37 1/2"	<b>I</b> =	2"	<b>O</b> =	1 7/8"	<b>U</b> =	6 1/2"
<b>D</b> =	2 1/2"	<b>J</b> =	1 3/8"	<b>P</b> =	2"		
<b>E</b> =	1 1/2"	<b>K</b> =	2"	<b>Q</b> =	1/2"		
<b>F</b> =	2 1/2"	<b>L</b> =	40 1/2"	<b>R</b> =	1"		

**Breezeway Rm. Window [West]**

**Wallside Proposal**

(Breezeway Room)



Picture Window

Casement

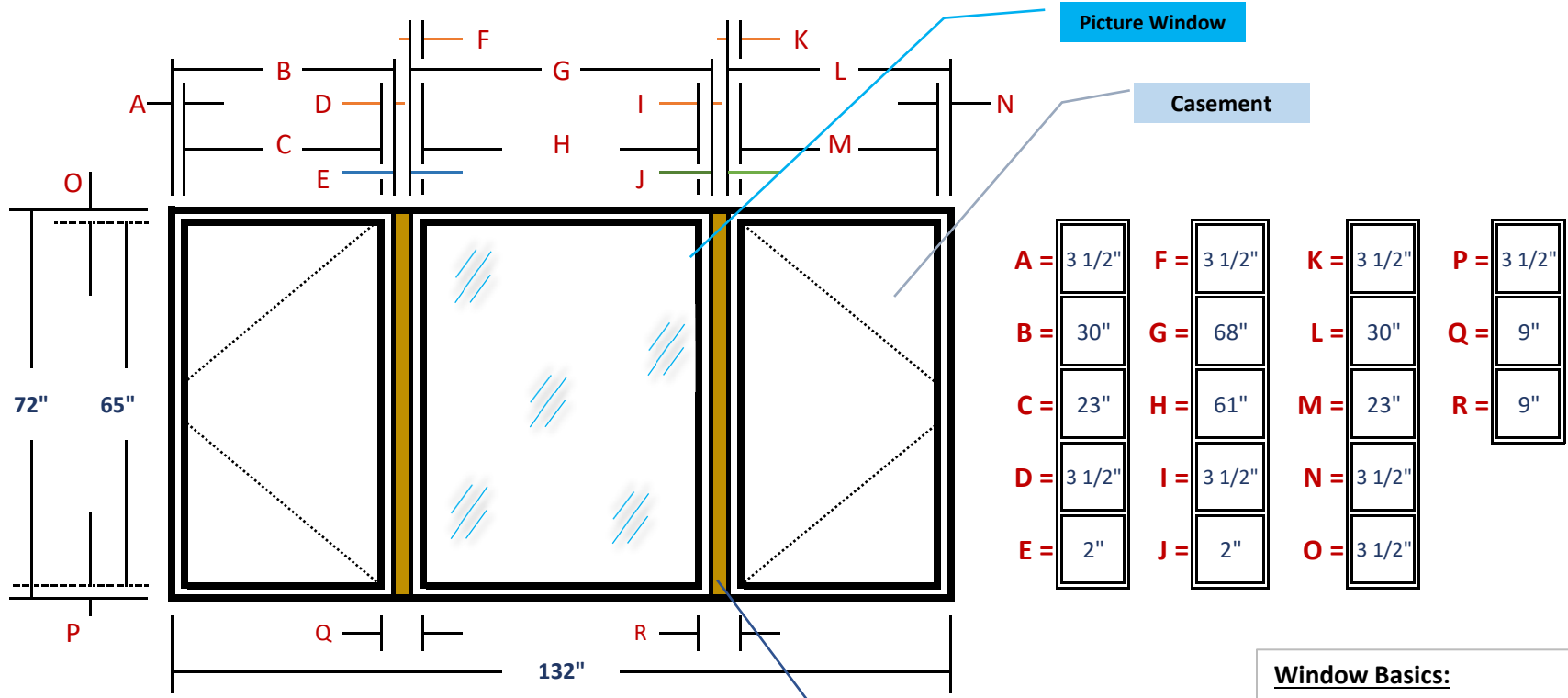
Wood Stud for Window

**Window Basics:**  
 - Tempered Glass  
 - Low E  
 - Double Pane

**Breezeway Rm. Window [North]**

(Breezeway Room)

**Wallside Proposal**



A = 3 1/2"	F = 3 1/2"	K = 3 1/2"	P = 3 1/2"
B = 30"	G = 68"	L = 30"	Q = 9"
C = 23"	H = 61"	M = 23"	R = 9"
D = 3 1/2"	I = 3 1/2"	N = 3 1/2"	
E = 2"	J = 2"	O = 3 1/2"	

**Window Basics:**

- Tempered Glass
- Low E
- Double Pane

Wood Stud for Window