



1694 BAGLEY

Historic District Commission Application:

Back Addition/Renovation

08.16.2021



1694 BAGLEY STREET, DETROIT, MI 48216

HISTORIC DISTRICT COMMISSION APPLICATION: BACK ADDITION/RENOVATION

EXISTING PHOTOS - SOUTH (FRONT) FACADE

08.13.2021



West



East



East



1694 BAGLEY STREET, DETROIT, MI 48216

HISTORIC DISTRICT COMMISSION APPLICATION: BACK ADDITION/RENOVATION

EXISTING PHOTOS - WEST + EAST FACADE

08.13.2021



1694 BAGLEY STREET, DETROIT, MI 48216

HISTORIC DISTRICT COMMISSION APPLICATION: BACK ADDITION/RENOVATION

EXISTING PHOTOS - NORTH (BACK) FACADE

08.13.2021



1694 BAGLEY STREET, DETROIT, MI 48216

HISTORIC DISTRICT COMMISSION APPLICATION: BACK ADDITION/RENOVATION

RENDERED ELEVATIONS - NORTH (BACK)

08.13.2021

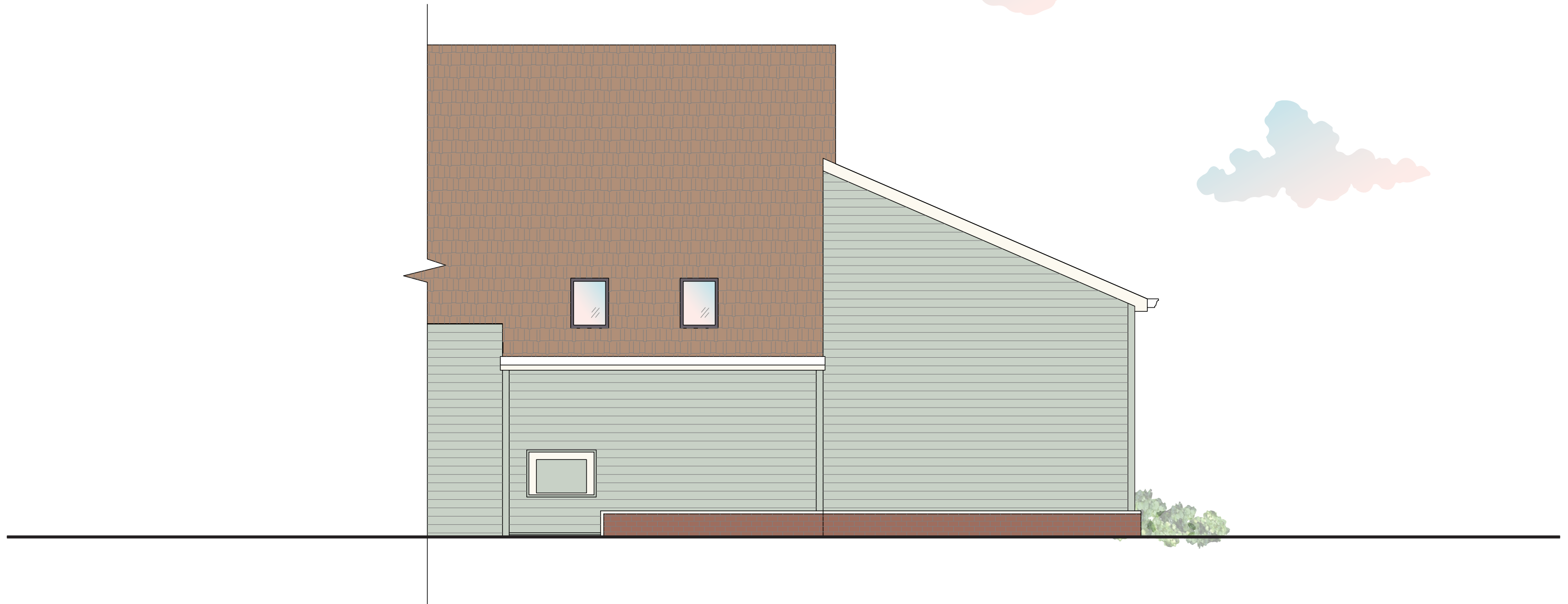


1694 BAGLEY STREET, DETROIT, MI 48216

HISTORIC DISTRICT COMMISSION APPLICATION: BACK ADDITION/RENOVATION

RENDERED ELEVATIONS - WEST FACADE

08.13.2021



1694 BAGLEY STREET, DETROIT, MI 48216

HISTORIC DISTRICT COMMISSION APPLICATION: BACK ADDITION/RENOVATION

RENDERED ELEVATIONS - EAST FACADE

08.13.2021



2007, Google Street View



Historic Photos provided by HDC, date unknown



DOUBLE HUNG G2

MARVIN® MARVIN SIGNATURE™ COLLECTION | ULTIMATE
CASEMENT / CASEMENT PUSH OUT

MO (mm)	1-9 3/4 (552)	2-1 3/4 (654)	2-5 3/4 (756)	2-7 3/4 (806)	2-9 3/4 (857)	2-11 3/4 (808)
RO (mm)	1-10 1/4 (565)	2-2 1/4 (667)	2-6 1/4 (768)	2-8 1/4 (819)	2-10 1/4 (870)	3-0 1/4 (921)
FS (mm)	1-9 1/4 (540)	2-1 1/4 (641)	2-5 1/4 (743)	2-7 1/4 (794)	2-9 1/4 (845)	2-11 1/4 (895)
DLO (mm)	14 7/64 (347)	18 7/64 (478)	22 7/64 (577)	24 7/64 (628)	26 7/64 (679)	28 7/64 (730)

MO (mm)	1-4 1/2 (419)	1-6 1/2 (469)	1-8 1/2 (520)	2-1/2 (622)	2-2 1/2 (673)	2-4 1/2 (723)	2-6 1/2 (774)	2-8 1/2 (825)	3-1/2 (927)	3-4 1/2 (1028)
RO (mm)	1-5 (431)	1-7 (482)	1-9 (533)	2-1 (635)	2-3 (685)	2-5 (736)	2-7 (787)	2-9 (838)	3-1 (939)	3-5 (1041)
FS (mm)	1-4 (406)	1-6 (457)	1-8 (508)	2-0 (609)	2-2 (660)	2-4 (711)	2-6 (762)	2-8 (812)	3-0 (914)	3-4 (1016)
DLO (mm)	0-10 13/64 (259)	1-0 13/64 (310)	1-2 13/64 (361)	1-6 13/64 (462)	1-8 13/64 (513)	1-10 13/64 (564)	2-0 13/64 (615)	2-2 13/64 (666)	2-6 13/64 (767)	2-10 13/64 (869)

MARVIN SIGNATURE™ ULTIMATE

Clad Color Options

Our low maintenance clad-wood products feature an extruded aluminum exterior finished in commercial-grade high performance PVDF fluoropolymer paint. Because our finish meets the toughest American Architectural Manufacturers Association (AAMA) 2605 standard, you can expect even our richest and boldest hues to resist fading and chalking even in harsh sun or extreme weather conditions. A palette of nineteen color options spans from muted, earthy tones to bold, rich colors and three pearlescent finishes. Custom color matching is also available to meet any design vision.

The American Architectural Manufacturers Association (AAMA) awards certifications to materials that pass numerous, rigorous tests. These tests simulate the harsh conditions that a finish will encounter throughout the life of the window or door. Passing these specification tests and achieving AAMA verification provides independent verification that our finishes are best-in-class.



*Finish samples are approximate and colors on screen can vary. Visit your local dealer to see actual color samples.

Details and Elevations not to scale.
E Meets national egress code with interior shade, retractable screen or both.
E1 The inclusion of an interior shade or a retractable screen will affect net clear opening resulting in the unit no longer meeting national egress code.
E2 The inclusion of both interior shade and retractable screen will affect net clear opening resulting in the unit no longer meeting national egress code.
Please consult your local Marvin representative for more information.
For further details and drawings visit the 'Tools and Documents' section at Marvin.com.

MULTIPLE ASSEMBLY CONVERSIONS

ROUGH OPENING		MASONRY OPENING WITHOUT BMC	
Width	Height	Width	Height
Add all frame sizes plus 1" (25)	Add all frame sizes plus 1/2" (13)	Add all frame sizes plus 1/2" (13)	Add all frame sizes plus 1/4" (6)

Ultimate Double Hung G2: UDHG2

Ultimate Casement: UCA
Ultimate Casement Push Out: UCAPO

Details and Elevations not to scale.
• Marvin exclusive wash mode is not available on Ultimate Awning, Ultimate Casement Round Tops or Ultimate Casement Windows less than 20" in width.
• Ultimate Casement Push Out not available in frame size heights less than 15 1/2".
• For units with a tall bottom rail, reduce the DLO height by 1 1/2".
E These windows meet national Egress codes for fire evacuation. Local codes may differ.
T For safety and/or code requirements, Marvin recommends tempered glass in all units with a frame size height of 71 1/2" or larger and units with a frame size of 25.2 ft² and larger.
Please consult your local Marvin representative for more information.
For further details and drawings visit the 'Tools and Documents' section at Marvin.com.

February 2020



1694 BAGLEY STREET, DETROIT, MI 48216

HISTORIC DISTRICT COMMISSION APPLICATION: BACK ADDITION/RENOVATION

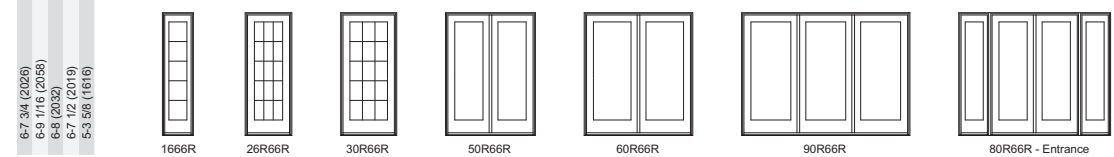
SPECIFICATIONS: WINDOWS

08.13.2021

1 3/4" INSWING / OUTSWING FRENCH DOOR

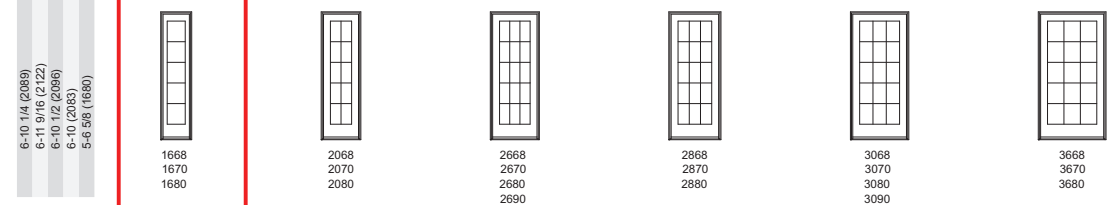
6-6R HEIGHT

Clad MO (mm)	1-8 11/32 (517)	2-7 1/8 (791)	3-1 1/8 (943)	4-11 1/2 (1511)	5-11 1/2 (1816)	8-9 7/8 (2689)	7-10 11/16 (2405)
Wood MO (mm)	1-10 31/32 (583)	2-9 3/4 (857)	3-3 3/4 (1010)	5-2 1/8 (1578)	6-2 1/8 (1883)	9-0 1/2 (2756)	8-1 5/16 (2472)
RO (mm)	1-8 27/32 (529)	2-7 5/8 (803)	3-1 5/8 (956)	5-0 (1524)	6-0 (1829)	8-10 3/8 (2702)	7-11 3/16 (2418)
FS (mm)	1-7 27/32 (504)	2-6 5/8 (778)	3-0 5/8 (930)	4-11 (1499)	5-11 (1803)	8-9 3/8 (2677)	7-10 3/16 (2392)
DLO (mm)	0-11 1/2 (292)	1-6 25/32 (477)	2-0 25/32(629)	1-6 25/32 (477)	2-0 25/32 (629)	2-0 25/32 (629)	0-1 1/2 (292) / 1-625/32 (477)



6-8 HEIGHT (7-0, 8-0 AND 9-0 HEIGHTS SEE BELOW)

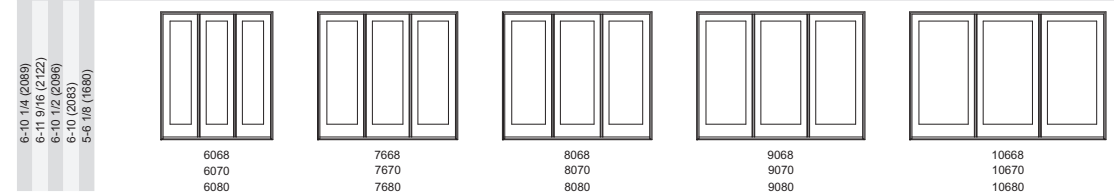
Clad MO (mm)	1-8 11/32 (517)	2-1 15/16 (659)	2-7 15/16 (811)	2-9 15/16 (862)	3-1 15/16 (946)	3-7 15/16 (1116)
Wood MO (mm)	1-10 31/32 (583)	2-4 9/16 (726)	2-10 9/16 (878)	3-0 9/16 (929)	3-4 9/16 (1030)	3-10 9/16 (1183)
RO (mm)	1-8 27/32 (529)	2-2 7/16 (672)	2-8 7/16 (824)	2-10 7/16 (875)	3-2 7/16 (976)	3-8 7/16 (1129)
FS (mm)	1-7 27/32 (504)	2-1 7/16 (646)	2-7 7/16 (799)	2-9 7/16 (849)	3-1 7/16 (951)	3-7 7/16 (1103)
DLO (mm)	0-11 1/2 (292)	11-1 19/32 (345)	1-7 19/32 (498)	1-9 19/32 (548)	2-1 19/32 (650)	2-7 19/32 (802)



Clad MO (mm)	4-1 1/8 (1248)	4-11 1/2 (1511)	5-1 1/8 (1553)	5-5 1/8 (1654)	5-11 1/2 (1816)	6-1 1/8 (1857)	7-1 1/8 (2162)
Wood MO (mm)	4-3 3/4 (1314)	5-2 1/8 (1578)	5-3 3/4 (1619)	5-7 3/4 (1721)	6-2 1/8 (1883)	6-3 3/4 (1924)	7-3 3/4 (2229)
RO (mm)	4-1 5/8 (1260)	5-0 (1524)	5-1 5/8 (1565)	5-5 5/8 (1667)	6-0 (1829)	6-1 5/8 (1870)	7-1 5/8 (2175)
FS (mm)	4-0 5/8 (1235)	4-11 (1499)	5-0 5/8 (1540)	5-4 5/8 (1641)	5-11 (1803)	6-0 5/8 (1845)	7-0 5/8 (2149)
DLO (mm)	1-1 19/32 (345)	1-6 25/32 (477)	1-7 19/32 (498)	1-9 19/32 (548)	2-0 25/32 (629)	2-1 19/32 (650)	2-7 19/32 (802)



Clad MO (mm)	6-0 5/16 (1837)	7-6 5/16 (2294)	8-0 5/16 (2446)	9-0 5/16 (2751)	10-6 5/16 (3208)
Wood MO (mm)	6-2 15/16 (1903)	7-8 15/16 (2361)	8-2 15/16 (2513)	9-2 15/16 (2818)	10-8 15/16 (3275)
RO (mm)	6-0 13/16 (1849)	7-6 13/16 (2307)	8-0 13/16 (2459)	9-0 13/16 (2764)	10-6 13/16 (3221)
FS (mm)	5-11 13/16 (1824)	7-5 13/16 (2281)	7-11 13/16 (2434)	8-11 13/16 (2738)	10-5 13/16 (3196)
DLO (mm)	1-1 19/32 (345)	1-7 19/32 (498)	1-9 19/32 (582)	2-1 19/32 (650)	2-7 19/32 (802)



- Ultimate Inswing French Door: UIFD
- Ultimate Outswing French Door: UOFD
- Ultimate Wood Inswing French Door: UWIFD
- Ultimate Wood Outswing French Door: UWOFD

7-0, 8-0 AND 9-0 HEIGHTS:			
	7-0 Height	8-0 Height	9-0 Height
Clad MO (mm)	7-2 1/4 (2191)	7-11 3/4 (2432)	8-11 3/4 (2737)
Wood MO (mm)	7-3 3/16 (2224)	8-1 1/16 (2465)	N/A
RO (mm)	7-2 1/2 (2197)	8-0 (2438)	9-0 (2743)
FS (mm)	7-2 (2184)	7-11 1/2 (2426)	8-11 1/2 (2731)
DLO (mm)	5-10 1/8 (1781)	6-7 3/8 (2022)	7-7 3/8 (2327)

February 2020

MARVIN SIGNATURE™ ULTIMATE

Clad Color Options

Our low maintenance clad-wood products feature an extruded aluminum exterior finished in commercial-grade high performance PVDF fluoropolymer paint. Because our finish meets the toughest American Architectural Manufacturers Association (AAMA) 2605 standard, you can expect even our richest and boldest hues to resist fading and chalking even in harsh sun or extreme weather conditions. A palette of nineteen color options spans from muted, earthy tones to bold, rich colors and three pearlescent finishes. Custom color matching is also available to meet any design vision.

The American Architectural Manufacturers Association (AAMA) awards certifications to materials that pass numerous, rigorous tests. These tests simulate the harsh conditions that a finish will encounter throughout the life of the window or door. Passing these specification tests and achieving AAMA verification provides independent verification that our finishes are best-in-class.



*Finish samples are approximate and colors on screen can vary. Visit your local dealer to see actual color samples.



1694 BAGLEY STREET, DETROIT, MI 48216

HISTORIC DISTRICT COMMISSION APPLICATION: BACK ADDITION/RENOVATION

SPECIFICATIONS: DOORS

08.13.2021



Existing Vinyl Siding: American Legend - Double 4" Clapboard - Cypress

Specification Sheet



Wolverine American Legend™

Vinyl Siding

General Description: Wolverine American Legend™ Siding provides the look of wood siding, but does not require the upkeep common to wood. Wolverine American Legend Siding is available in a selection of profiles and finishes that offer the industry's best real wood replication. It is appropriate for use in new construction for single family homes, multi-housing projects and light commercial developments. Wolverine American Legend is also an ideal product for remodeling.

Styles:

Profile	Finish	Panel Projection (Nominal)	Wall Thickness (Nominal)	Lock Design	Colors	Accessory Pocket
Double 4" Clapboard	Woodgrain	9/16"	.042"	GripLock™ post-formed positive lock	21	½", 5/8", 3/4"
Double 5" Clapboard	Woodgrain	9/16"	.042"	GripLock™ post-formed positive lock	21	½", 5/8", 3/4"
Double 4½" Dutchlap	Woodgrain	9/16"	.042"	GripLock™ post-formed positive lock	18	½", 5/8", 3/4"

Colors: Wolverine American Legend siding profiles are available in the industry's widest selection of colors. All colors are Spectrophotometer controlled and utilize exclusive PermaColor™ color science.

Colonial White (01)	Herringbone (04)	Snow (31)	Granite Gray (42)	Charcoal Gray (46)	Spruce (16)
Autumn Yellow (10)^	Light Maple (55)^	Sterling Gray (33)	Natural Clay (60)	Flagstone (97)	
Desert Tan (7)	Savannah Wicker (59)	Buckskin (41)^	Oxford Blue (32)	Forest (47)	
Heritage Cream (11)	Seagrass (30)	Cypress (37)	Autumn Red (23)	Hearthstone (19)	

^ Not available in D4.5DL Profile

STUDfinder™: The patented STUDfinder Installation System combines precisely engineered nail slot locations with graphics. Nail slots are positioned 16" on center to allow for alignment with studs. STUDfinder graphics centered at each slot provide a quick and easy guide to help locate studs.

Accessories: CertainTeed manufactures a wide range of siding accessories that are compatible with Wolverine American Legend siding styles and colors. Accessory products include installation components, soffit, window and door trim, corner lineals, corner systems and decorative moldings.

Composition: Wolverine American Legend siding products are produced using PVC resin.

Technical Data: Wolverine American Legend siding is in compliance with ASTM specification for Rigid Polyvinyl Chloride (PVC) Siding D3679, and the requirements of the 2015, 2018 and 2021 International Residential Code and International Building Code, the 2020 Florida Residential Code and Florida Building Code, and the 2019 California Residential Code and California Building Code. American Legend siding meets or exceeds the properties noted in Table 1.

CertainTeed LLC
20 Moores Road
Malvern, PA
certainteed.com
© 01/21



1694 BAGLEY STREET, DETROIT, MI 48216

HISTORIC DISTRICT COMMISSION APPLICATION: BACK ADDITION/RENOVATION

SPECIFICATIONS: SIDING

08.13.2021

Three-part Format Specifications: Long form specifications in three-part format are available from CertainTeed by calling our Architectural Services Staff at 800-233-8990. These specifications are also available on our website at certainteed.com.

Table 1:

ASTM E 84	Meets Class A flame spread requirements as tested according to ASTM E84.
ASTM D 635	Material is self-extinguishing with no measurable extent of burn when tested in accordance with this specification.
NFPA 268	Radiant Heat Test - Ignition Resistance of Exterior Walls - Conclusion that Wolverine met the conditions for allowable use as specified in section 1406 of the International Building Code.

Important Fire Safety Information: When rigid vinyl siding is exposed to significant heat or flame, the vinyl will soften, sag, melt or burn, and may thereby expose material underneath. Care must be exercised when selecting underlayment materials because many underlayment materials are made from organic materials that are combustible. You should ascertain the fire properties of underlayment materials prior to installation. All materials should be installed in accordance with local, state and federal Building Code and fire regulations.

Wind Load Testing: Wolverine American Legend siding has been tested per ASTM D 5206 standard test method for wind load resistance to withstand negative wind load pressures and their mph equivalents as shown in the chart below. All products exceed industry standards for wind load performance. Check with your local building inspector for wind load requirements in your area for the type of structure you are building

Table 2

Product	Fastener Spacing	2015/2018 IBC/IRC			2021 IBC/IRC		
		Standard Design Pressure Rating	Maximum Windspeed (mph)		Standard Design Pressure Rating	Maximum Windspeed (mph)	
			ASD	ULT		ASD	ULT
Double 4" Clapboard	Nails 16" o.c.	71.9	173	223	45.1	137	177
Double 4-1/2" Dutchlap	Nails 16" o.c.	77.2	179	231	48.9	143	187
Double 5" Clapboard	Nails 16" o.c.	55.6	152	196	40.0	129	166

* Windload calculations based on ASTM D3679, ASCE 7-10, 30ft High, Exposure B

Documents: Wolverine Vinyl Siding meets the requirements of one or more of the following specifications.

- Texas Department of Insurance Product Evaluation EC-11
 - Conforms to ASTM Specification D3679
 - ICC-ES Evaluation Report ESR-1066
 - Florida BCIS Approval FL1573
 - Florida BCIS Approval FL12483
- For specific product evaluation/approval information, call 800-233-8990.

Installation: Prior to commencing work, verify governing dimensions of building, examine, clean and repair, if necessary, any adjoining work on which the siding is in any way dependent for its proper installation. Sheathing materials must have an acceptable working surface. Siding, soffit and accessories shall be installed in accordance with the latest editions of CertainTeed installation manuals on siding and soffit. Installation manuals are available from CertainTeed and its distributors.

Warranty: CertainTeed supports Wolverine American Legend siding products with a Lifetime Limited Warranty including PermaColor Lifetime Fade Protection to the original homeowner. The warranty is transferable if the home is sold.

Technical Services: CertainTeed maintains an Architectural Services staff to assist building professionals with questions regarding CertainTeed siding products. Call 800-233-8990 for samples and answers to technical or installation questions.

Sample Short Form Specification: Siding as shown on drawings or specified herein shall be Wolverine American Legend Vinyl Siding as manufactured by CertainTeed Siding, Malvern, PA. Installation shall be in accordance with manufacturer's instructions.

CertainTeed LLC
20 Moores Road
Malvern, PA
certainteed.com
© 01/21



CertainTeed LLC
20 Moores Road
Malvern, PA
certainteed.com
© 01/21



1694 BAGLEY STREET, DETROIT, MI 48216

HISTORIC DISTRICT COMMISSION APPLICATION: BACK ADDITION/RENOVATION

SPECIFICATIONS: SIDING

08.13.2021