

DEXER POP-UP PROJECT

8-10-2021

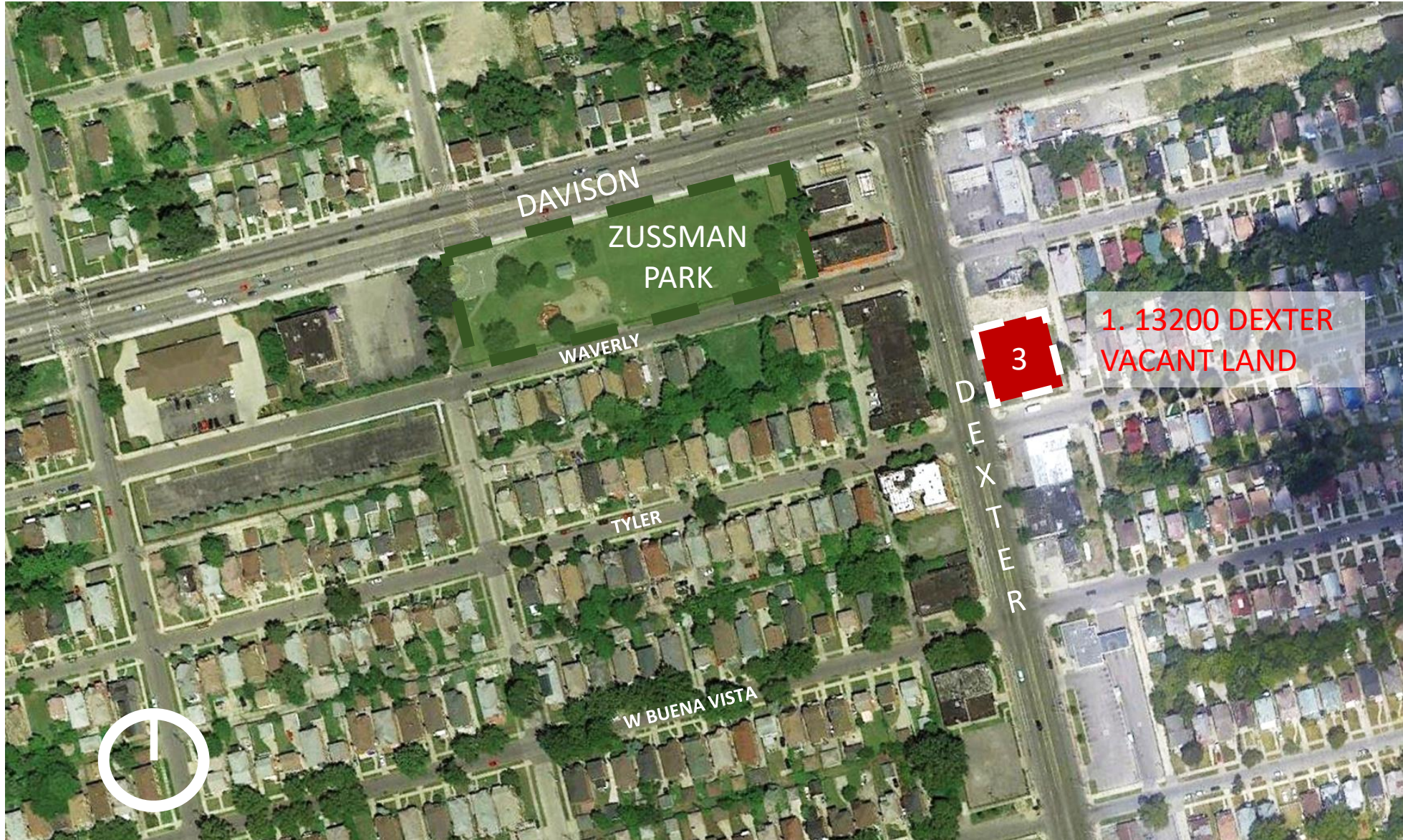
Detailed Scope of Work:

- Project site Vacant parcel address 13200 Dexter.
- Located in the historic Russell Woods/Nardin Park neighborhood
- Installing 5 shipping containers as temporary pop-up retail destination. General dimensions of the containers are 40'x8'x 8'
- 3 Containers to have storefront door and glass system.
- 1 container (on top) to be used to display artwork.
- 1 container for restrooms, to have 2 porta-johns inside the container.
- Site to have 7 parking spaces.
- Site to have circulation for food trucks.
- Site materials will have concrete apron at storefront; grass on interior event space and gravel for parking and food truck circulation.

Community Engagement Narrative:

A community engagement event for this project was held May 12, 2021, at 5pm. A presentation of the site plan/floor plan and 3D exterior rendering was made with narration of design approach and site functionality. The community was generally excited and positive in their reaction to the proposed development. They made great comments related to safety; incorporating “greening” features into the design that speaks to the historic nature of the community and “softening” the industrial character of the shipping containers. The community is also interested in having a walk-up window in the container structure(s) for ordering and take-away items such as coffee and/or food items.

13200 DEXTER AVE- SHORT TERM POP UP RETAIL





CURRENT

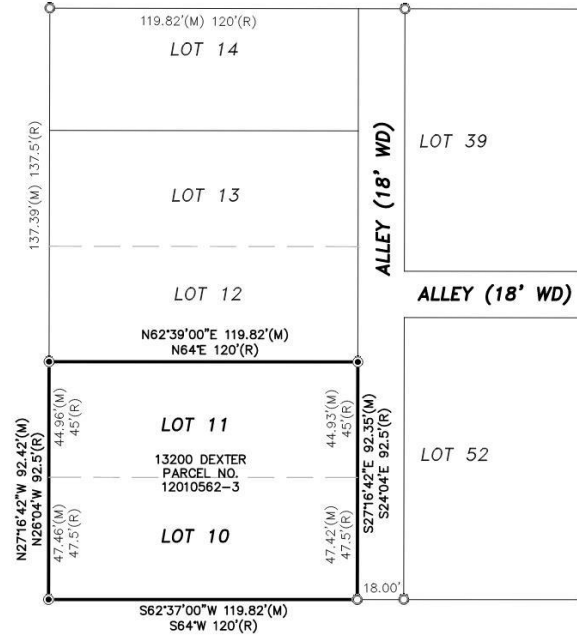


WAVERLY AVE. (50' WD)

LEGEND

- FOUND IRON
- SET IRON

DEXTER AVE. (100' WD)



TYLER AVE. (60' WD)

DESCRIPTION:

E DEXTER LOT 10 & 11 SULLIVANS DEXTER
BLVD SUB L46 P30 PLATS, W C R



NOTE:

BEARINGS BASED ON MICHIGAN
STATE PLANE COORDINATES,
NAD83, MICHIGAN SOUTH ZONE

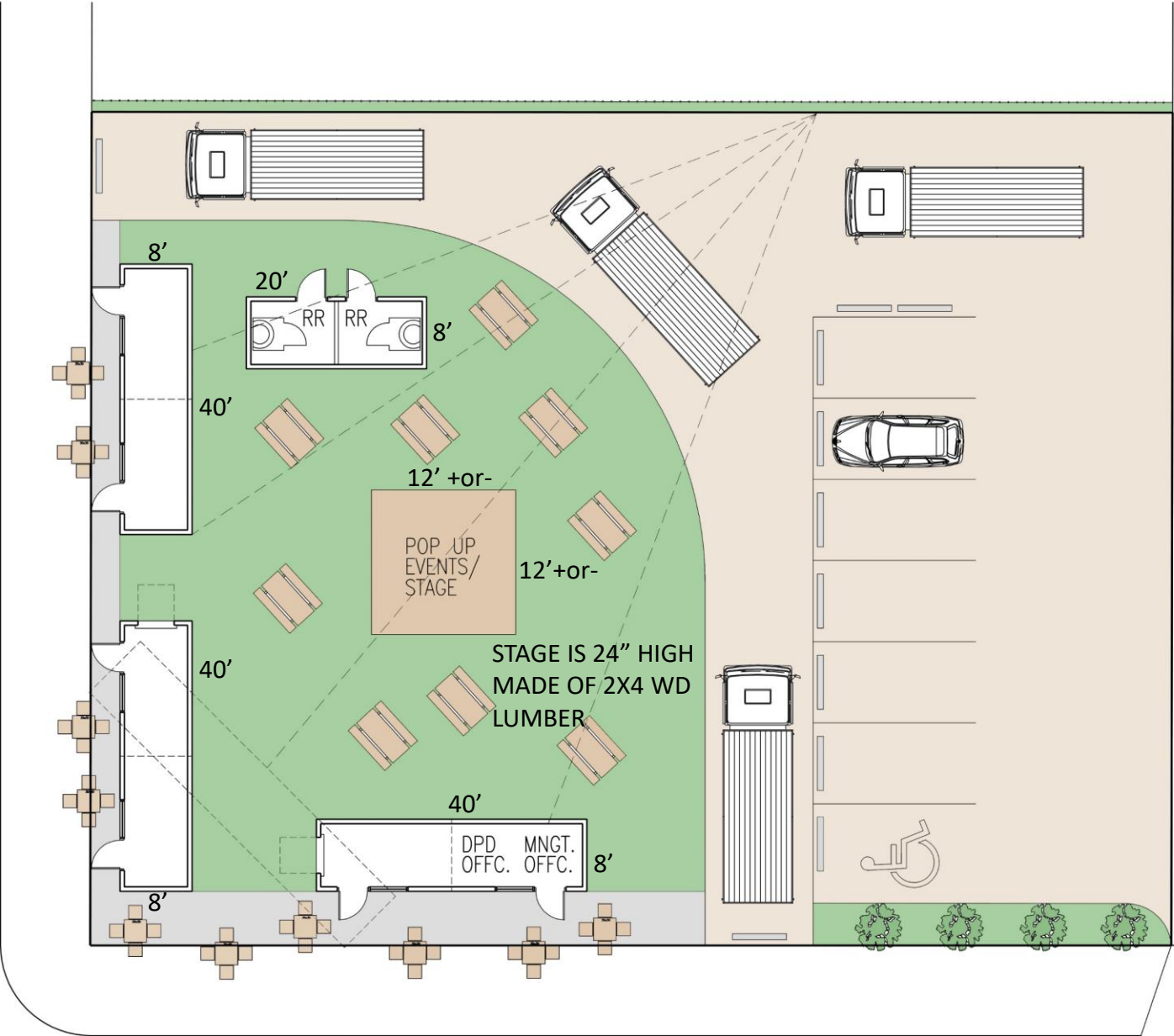


CLIENT: KEO ASSOCIATES	DATE: 3-5-20
BOUNDARY SURVEY	DRAWN BY: JRV
	CHECKED BY: JDH
13200 DEXTER AVE.	SCALE: HOR 1"=40 FT. VER 1"=- FT.
SECTION: 13 TOWNSHIP: RANGE:	FBK: 362 CHP: MJ
CITY OF DETROIT WAYNE COUNTY MICHIGAN	1



C

DEXTER AVE. (100' WD)

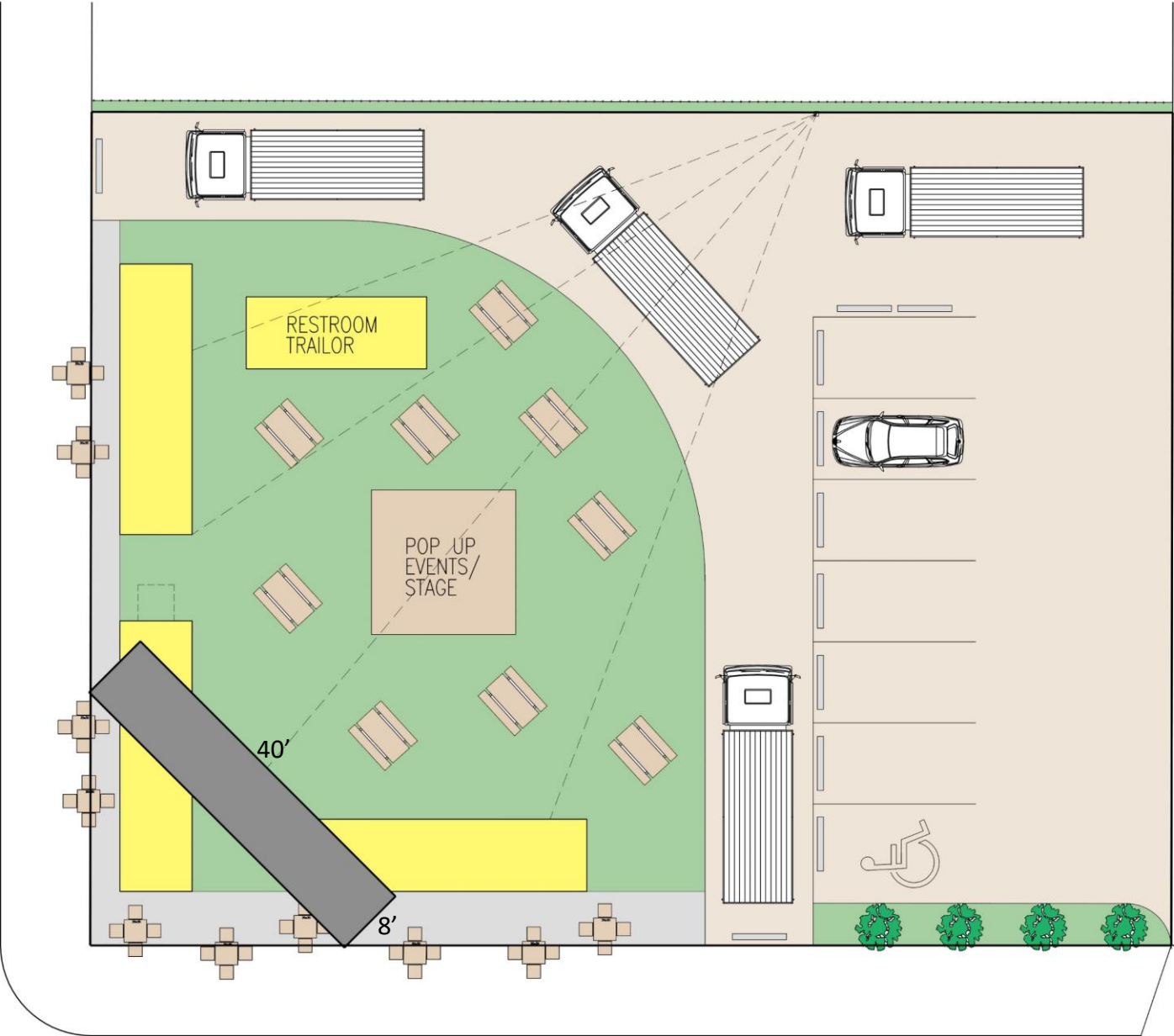


ALLEY (18' WD)

TYLER AVE. (60' WD)

C

DEXTER AVE. (100' WD)



ALLEY (18' WD)

TYLER AVE. (60' WD)





8'-8"

17'-4"

8'-8"



PROJECT SPECS

Storefront System:



Kawneer Anodize finishes

Kawneer gives you a wide variety of anodized finishes with attractive alternatives. The benefit of a durable, anodized finish is married to the beauty of some very dynamic and exciting colors.

At the start of every design, there's a choice of how you want to finish. Contact your Kawneer sales rep for the information on these and other finishes available from Kawneer.

KAWNEER FINISH NO.	COLOR	ALUMINUM ASSOCIATION SPECIFICATION	OTHER COMMENTS
#14	CLEAR	AA-M10C21A41	Architectural Class I (.7 mils minimum)
#17	CLEAR	AA-M10C21A31	Architectural Class II (.4 mils minimum)
#18	CHAMPAGNE	AA-M10C21A44	Architectural Class I (.7 mils minimum)
#26	LIGHT BRONZE	AA-M10C21A44	Architectural Class I (.7 mils minimum)
#28	MEDIUM BRONZE	AA-M10C21A44	Architectural Class I (.7 mils minimum)
#40	DARK BRONZE	AA-M10C21A44	Architectural Class I (.7 mils minimum)
#29	BLACK	AA-M10C21A44	Architectural Class I (.7 mils minimum)



KAWNEER GLOBAL / KAWNEER DIRECT / ENGLISH | FRANÇAIS

SEARCH

PRODUCTS / PROJECTS / RESOURCES / MARKETS / SUSTAINABILITY / NEWS / ABOUT / CONTACT

Products ▶ Storefront Framing ▶ Fixed ▶ Trifab® VersaGlaze® 601/601T/601UT Framing System

ADDITIONAL PRODUCT INFO

OVERVIEW

PROJECT REPORTS
BIM MODELS
CAD & SPEC DOWNLOAD
ORDER LITERATURE
HURRICANE RESISTANCE INFORMATION
KAWNEER FINISHES
THERMAL TECHNOLOGY

DOCUMENTS

LITERATURE

MY PRODUCTS [Empty / View All ▶](#)



Trifab® VersaGlaze® 601/601T/601UT Framing System

- 2" (50.8mm) sightline
- 6" (152.4mm) depth
- Ultra thermal, high thermal or non-thermal performance
- Center and front plane glass applications
- Hurricane resistance on 601 and 601T Framing Systems with center plane glass application

ADD TO MY PRODUCT LIST

SHARE

Exterior Paint System: Sherwin Williams

