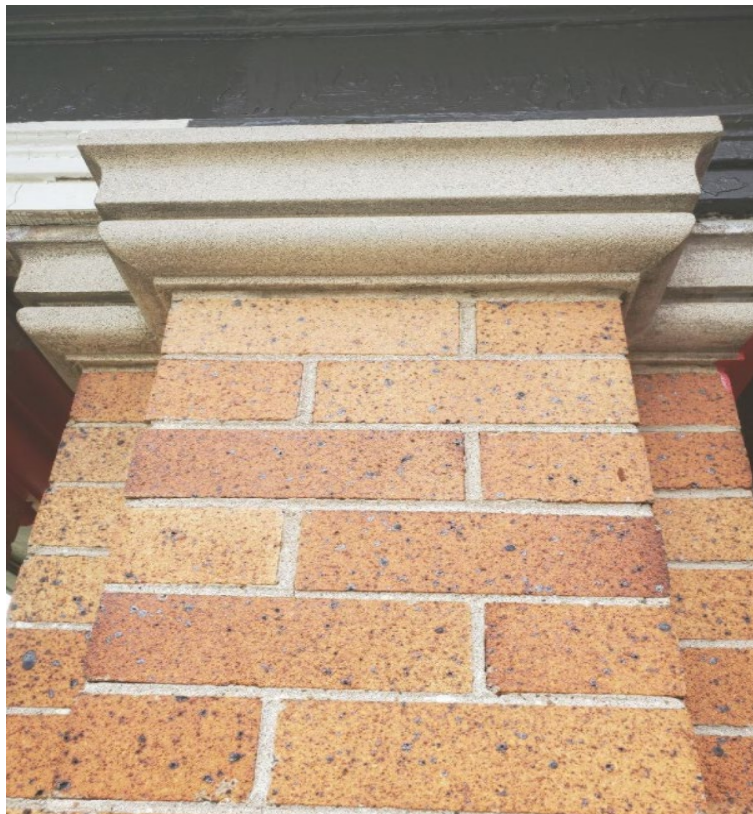


July 22, 2021

Detroit Historic Preservation Team  
Daniel Rieden, Lead Landscape Architect  
Coleman A. Young Municipal Center  
2 Woodward Avenue, Suite 808  
Detroit, MI 48226

RE: Paint  
2071 Longfellow Street, Detroit, MI 48206

I hope that this message finds you well. This is a follow up to our telephone conversation regarding requesting to paint the concrete. I physically went to Sherwin Williams and Home Depot to try to match the brick as close as possible to an available color. Overall, I have found that the breathable paint is only available through Sherwin Williams and it has to be custom ordered. The Loxon brand is not stocked in the Sherwin Williams store however it can be ordered in the store or online. Sherwin Williams offers a paint match online and that is how I came to pick the color that I did. When uploading a photograph, their system picks many matching colors however all colors are not available to be picked for the Loxon brand which is a special brand that includes the breathable mixture. So after all of this, this is what I have picked and here is a recent picture of the brick.



## [LOXON Self-Cleaning Acrylic Coating | SherwinWilliams \(sherwin-williams.com\)](https://www.sherwin-williams.com)







### LOXON Self-Cleaning Acrylic Coating

★★★★★

1 Reviews | [Write a Review](#)

Loxon® Self-Cleaning Acrylic Coating is engineered to keep properties looking fresh and attractive with a self-cleaning formula that sheds dirt with rainwater or water contact. With advanced durability, water-shedding, water repellency and dirt pick-upresistance, this high-performance coating helps avoid costly repaints and extensive cleaning — without sacrificing aesthetics.

Color	Options	Price
 SW 9166 Drift of Mist <a href="#">Remove Color</a>	Container Size: <input type="text" value="1 Gallon"/>   Sheen: <input type="text" value="Flat"/>  Base: Extra White <a href="#">Change Base</a>	<a href="#">Sign In</a> to order online  Sales Number: 6510-28284 Product Number: LX13W0051
Actual color may vary from on-screen representation. <a href="#">Details</a>	Your options may be adjusted based on color selection.	

All prices displayed are for U.S. Sherwin-Williams locations and are in U.S. Dollars. Prices do not include taxes or other fees as applicable.

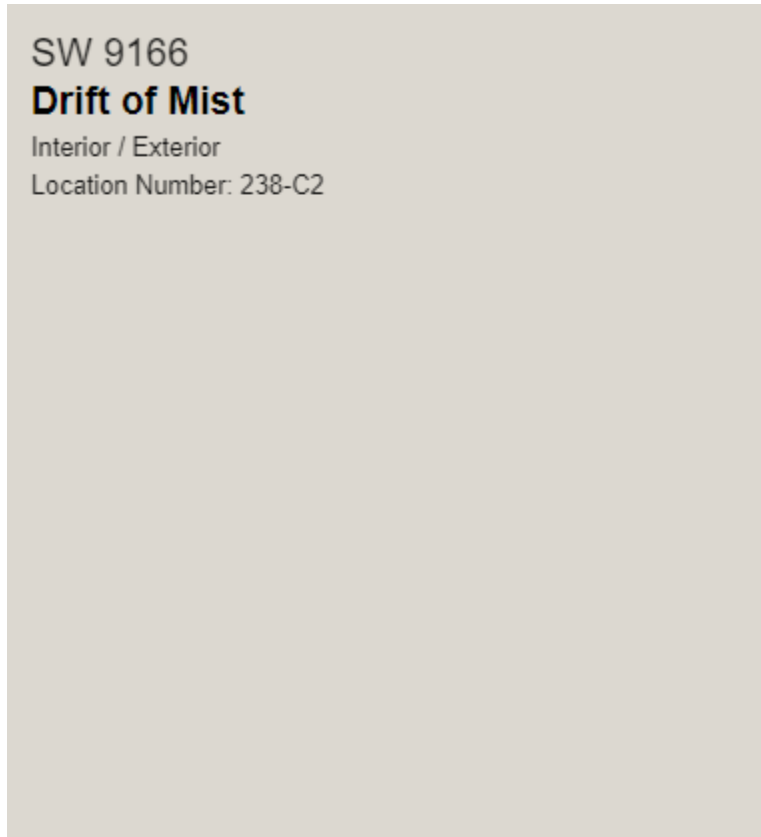


### Product Details

- Specifically engineered exterior formula helps prevent dirt from clinging to the paint film.
- Excellent weathering protection including resistance to UV, alkalinity, efflorescence and chalking.
- Resistance to wind-driven rain.
- Breathable paint reduces the potential for blistering and coating failure.
- Excellent protection over bare or previously coated concrete, stucco, EIFS, masonry and cement board.
- Mildew-resistant formula contains agents that inhibit the growth of mold and mildew on the surface of the coating film.
- Attractive flat sheen that can be tinted to a wide range of colors.
- Meets the most stringent VOC regulations with <50 g/L VOC.
- Apply directly to fresh concrete (at least 7 days old).
- Can be applied down to 35°F.

This is a breathable paint and the color match is close to the color of the existing brick. The color is Sherwin Williams SW 9166, Drift of Mist. Here is a larger picture of the color.

[Drift of Mist SW 9166 - Neutral Paint Color - Sherwin-Williams](#)



Please feel free to contact me if you need more information. Thank you for your time and assistance. Be well.

Delia Wells  
2071 Longfellow Street  
Detroit, MI 48206  
Phone (248) 914-3675