

Description of current condition/Scope of Work:

- New windows have been installed throughout the entire home. The new windows are Pella Architect Traditional Series. Most are double hung, some with 1 over 1 patterns, others with divided light 9 over 1 and 6 over 1. All windows are a replica of the previous deteriorated window. The exterior is black clad and the interior is stained wood. The grilles are Ogee Integral Light Technology in $\frac{7}{8}$ ". The panes are Insulated Dual Low-E Glass.

Description of project:

- 80% of windows had previous HDC approval for replacement. When our contractor/ crew began replacing approved windows- they noted most windows needed to be re-framed. When the crew attempted to remove 'unapproved' windows for repair, the same issues of reframing ensued. Several windows exhibited soft or molded wood, broken glass, absent or loose glazing, damaged/missing divided light mullions. Almost every window was painted shut and endured structural damage to the sash upon removal.
- When we originally were researching the cost of repairing the windows we realized we would need to also get storm windows as the existing windows wouldn't be energy efficient. The cost for storm windows alone was 18-22k.

Window 1, 9/1 divided light South Elevation Window



Window 2, 9/1 divided Light South Elevation



Window 3, 9/1 divided Light South Elevation - Bottom Rail



Window 4, 9/1 divided light South Elevation - Right Sash



Window 5, 9/1divided light South Elevation



all glazing needs replacement

Rot and mold

Window 6, 9/1 divided light East Elevation



Window 8, 12/1 divided light West Elevation



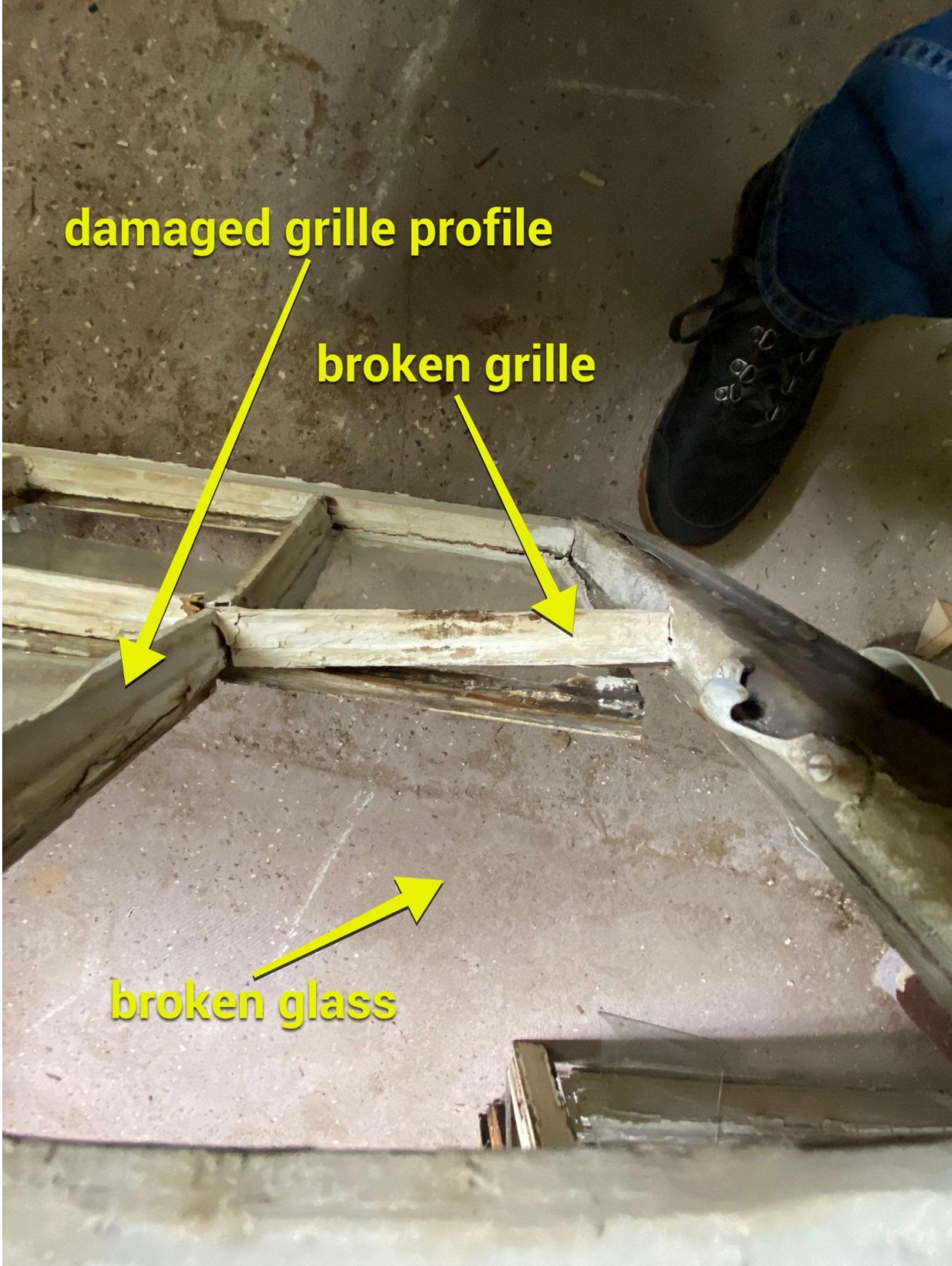
Window 9, 12/1 divided light South Elevation



Window 7, 12/1 divided light South Elevation



Window , 9/1 divided light South Elevation

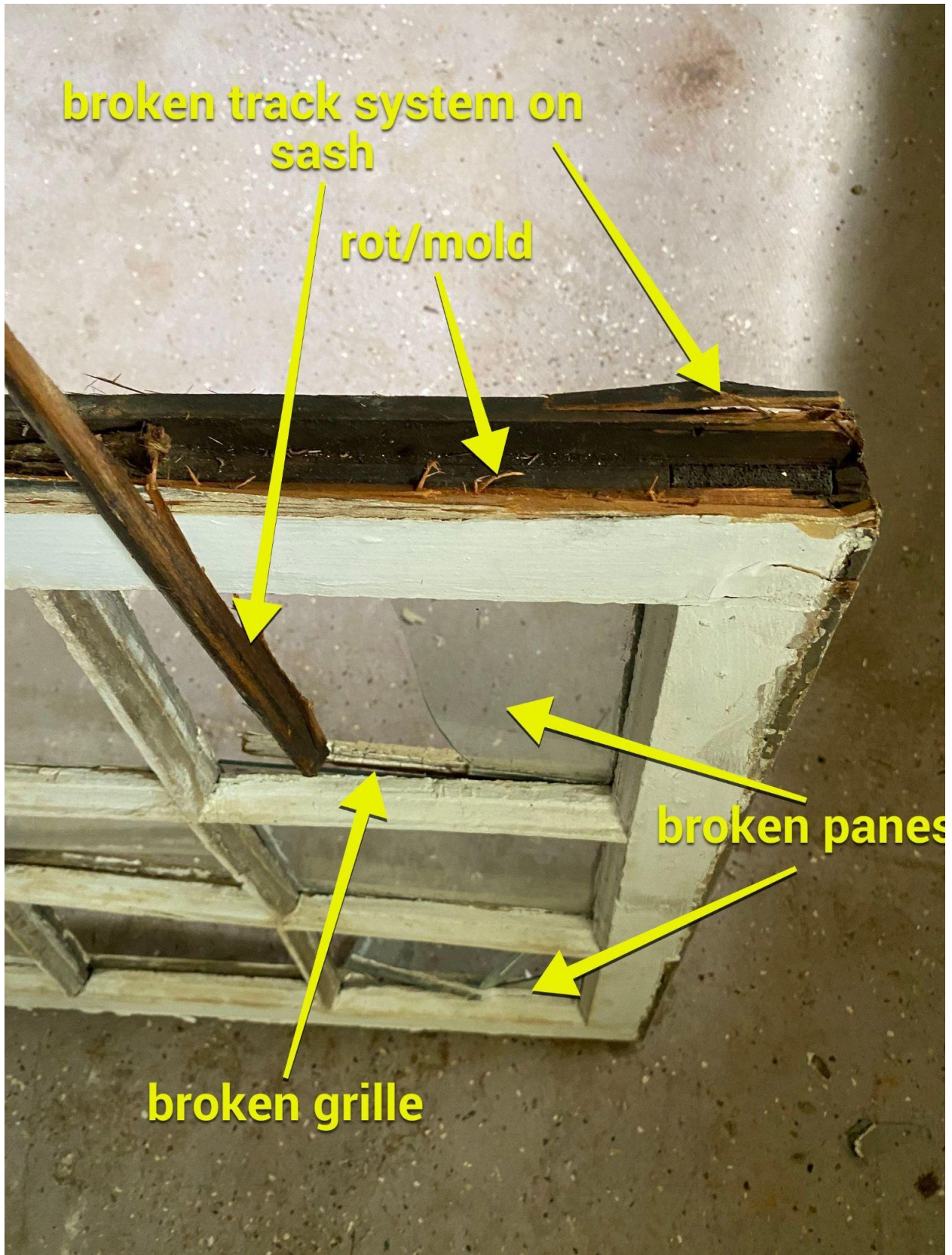


damaged grille profile

broken grille

broken glass

Window 6, 9/1 divided light West Elevation



West Elevation



South Elevation



East Elevation

