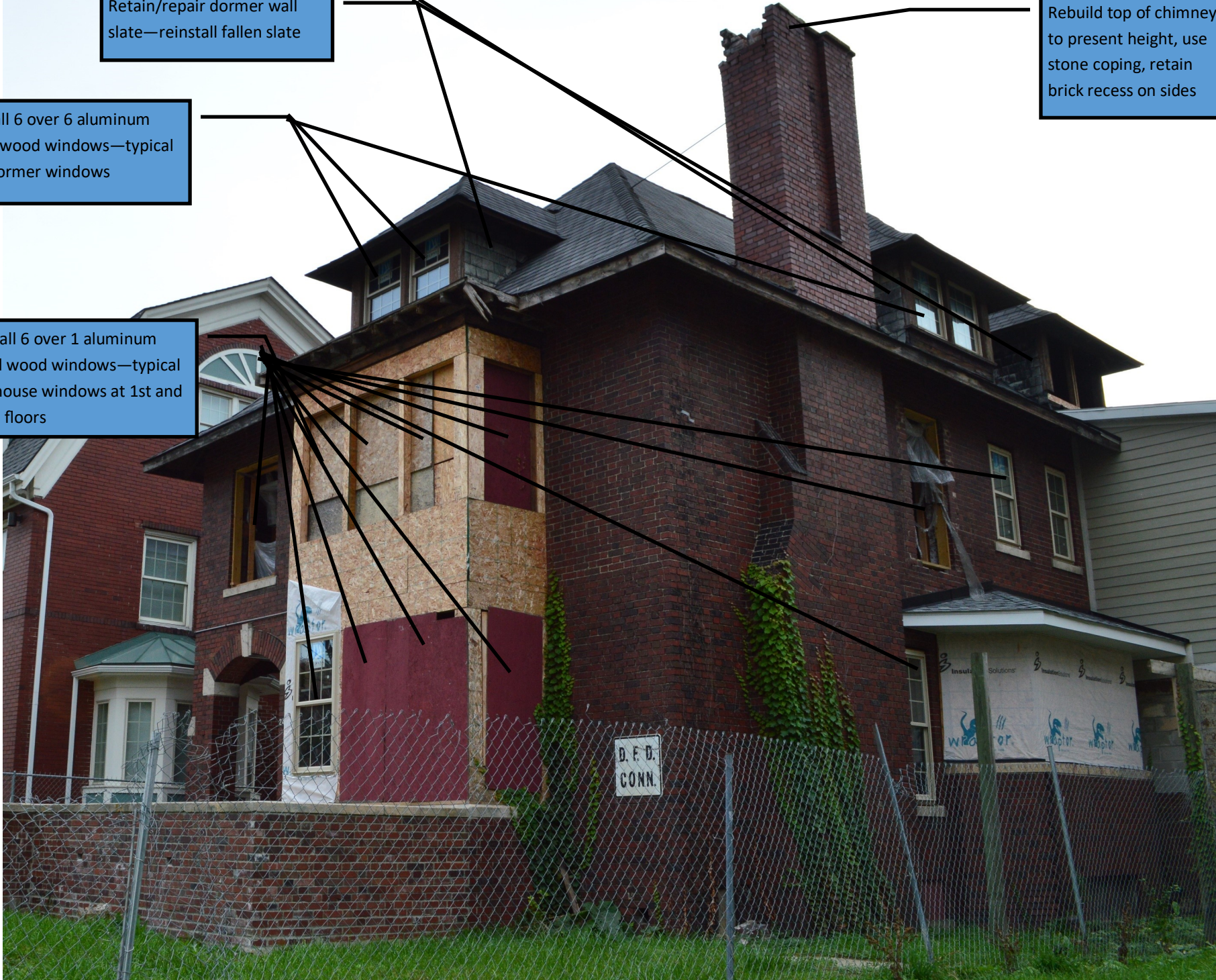


Retain/repair dormer wall
slate—reinstall fallen slate

Rebuild top of chimney
to present height, use
stone coping, retain
brick recess on sides

Install 6 over 6 aluminum
clad wood windows—typical
all dormer windows

Install 6 over 1 aluminum
clad wood windows—typical
all house windows at 1st and
2nd floors



Retain/repair dormer wall slate—reinstall fallen slate

Remove shed roof and reconstruction original shallow hip roof configuration

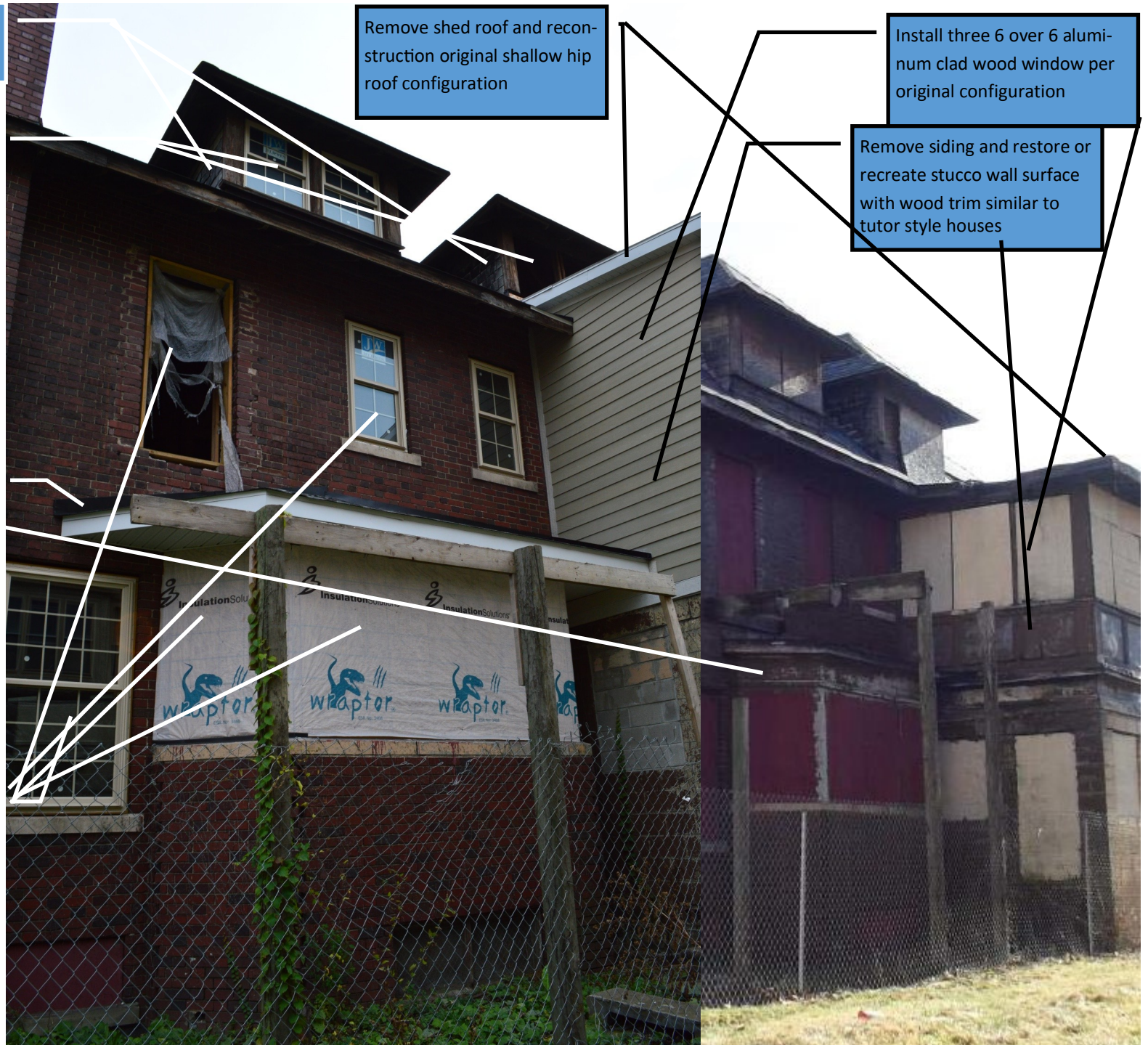
Install three 6 over 6 aluminum clad wood window per original configuration

Install 6 over 6 aluminum clad wood windows—typical all dormer windows

Remove siding and restore or recreate stucco wall surface with wood trim similar to tutor style houses

Remove roof and restore flat roof without overhangs. Remove aluminum soffit and fascia—install tall fascia per original

Install 6 over 1 aluminum clad wood windows—typical all house windows



Retain/repair dormer wall
slate—reinstall fallen slate

Install 6 over 6 aluminum
clad wood windows—typical
all dormer windows

Install 6 over 1 aluminum
clad wood windows—typical
all house windows

Wood trim on wall around
windows—wood sills

Scrape and paint plaster
porch ceiling

Install stucco wall surface





Six over one windows

1970s survey photos



Chimney in original condition

West side second story enclosed porch—original appearance

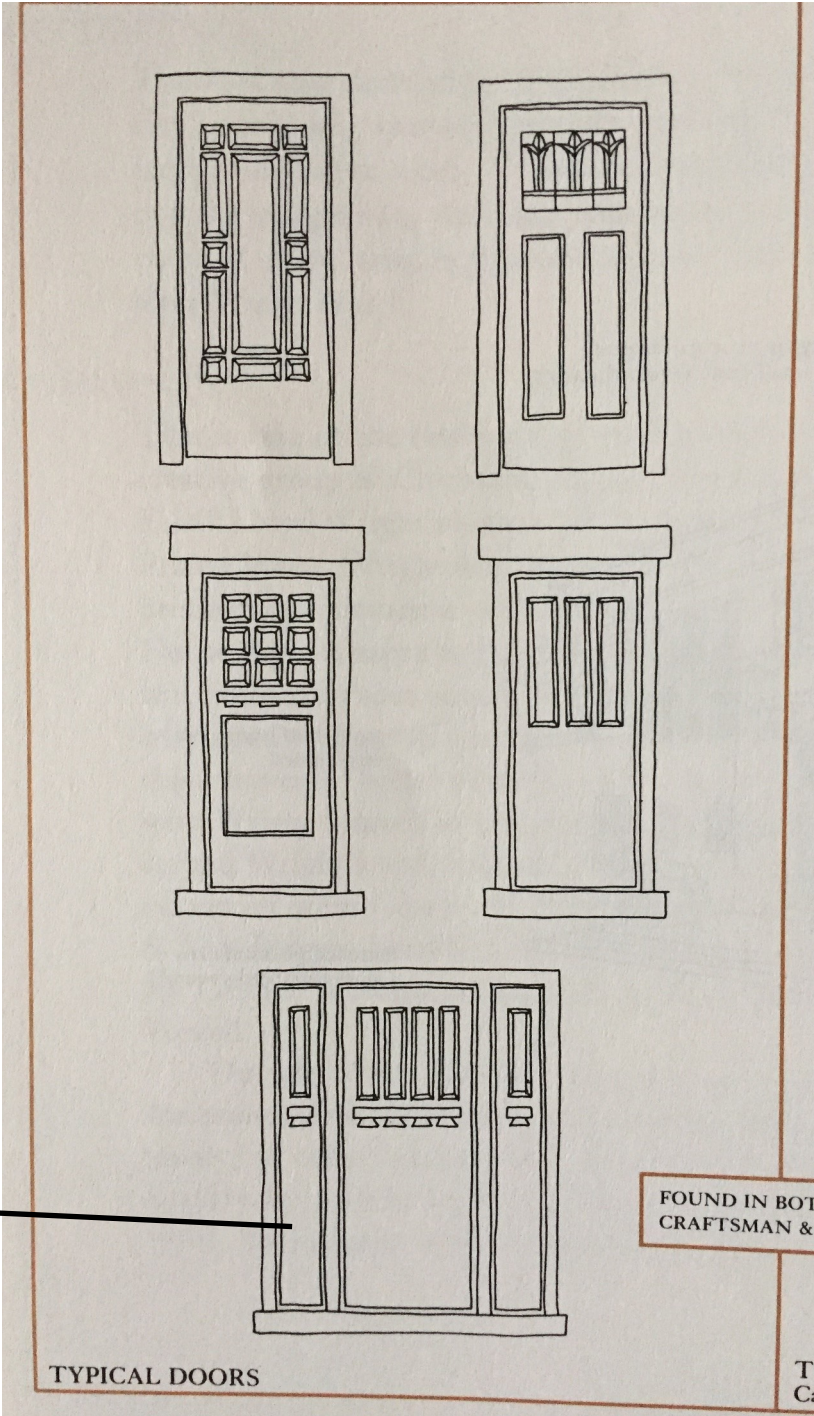
Scrape and paint ceiling

Insert new clear glass in existing wood transom frame

Keep original door frame—
Install new Door based on approval at later date



Prairie Style Doors



TYPICAL DOORS

FOUND IN BOT
CRAFTSMAN &

T
C