



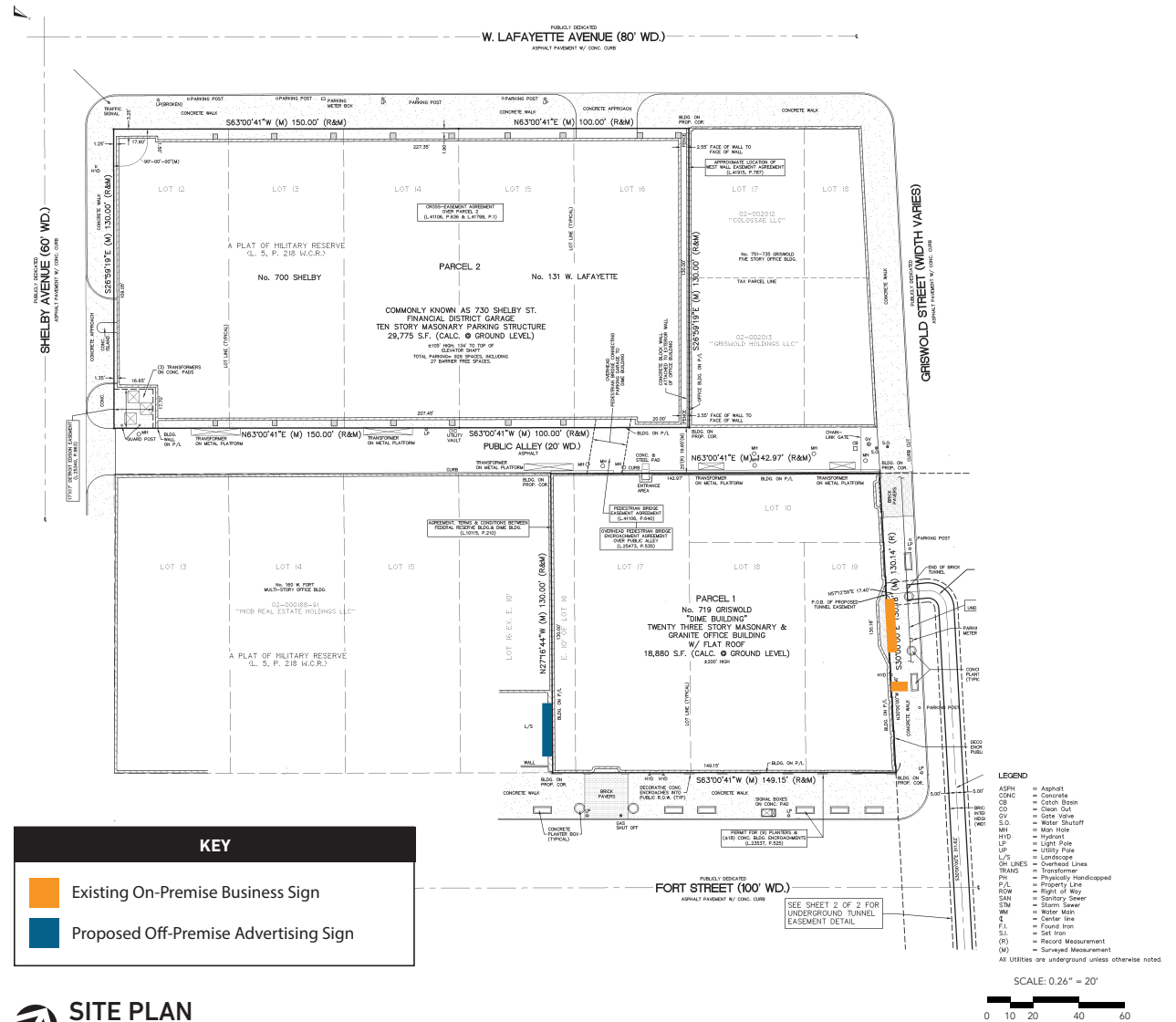
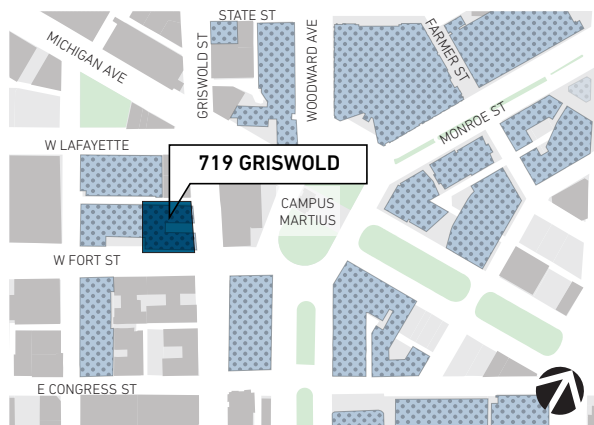
719 GRISWOLD PERMIT APPLICATION

CH **APRIL 2021**

SITE PLAN

719 GRISWOLD

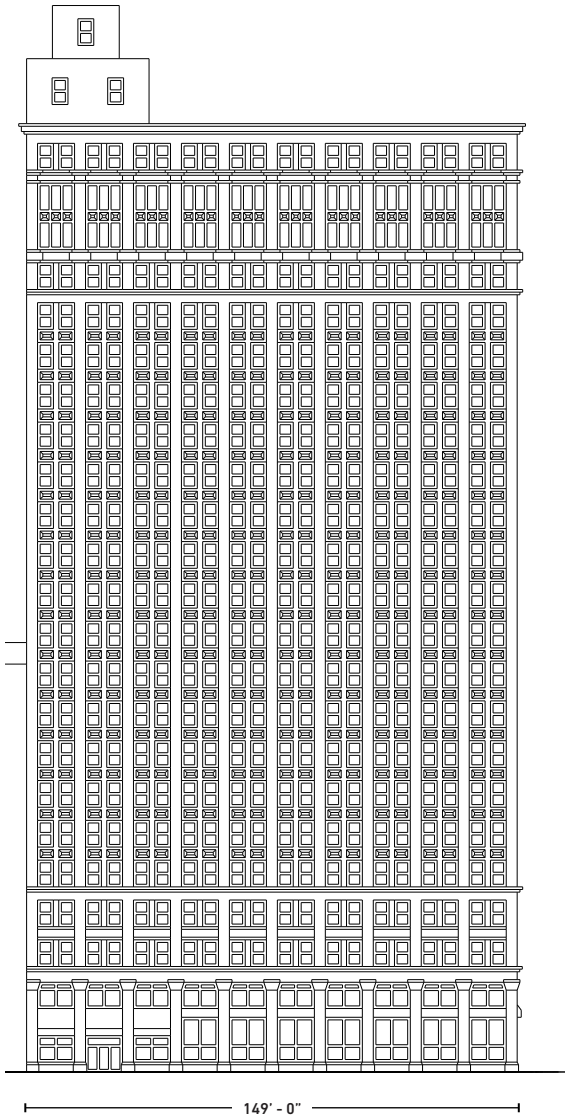
INFORMATION	
Owner Name	719 Griswold Associates LLC
Premise Parcel #(s)	02000192.
Zoning District	B-5: Major Commercial (CM)
Existing On-Premise Business Sign Size	N/A
Existing On-Premise Business Sign Area	N/A
Proposed Off-Premise Advertising Sign Size	60'H x 25' W
Proposed Off-Premise Advertising Sign Area	1,500 S.F.
Proposed Sign Qualification	Super
Proposed Sign Setback from Closest ROW	5' from Fort Street
Total Street Frontage	279 L.F.



SOUTH ELEVATION

719 GRISWOLD

**EXISTING ON-PREMISE BUSINESS SIGNS ARE ALL
BEHIND STOREFRONTS AND NOT ON BUILDING
EXTERIOR.**



W FORT ST

EAST ELEVATION

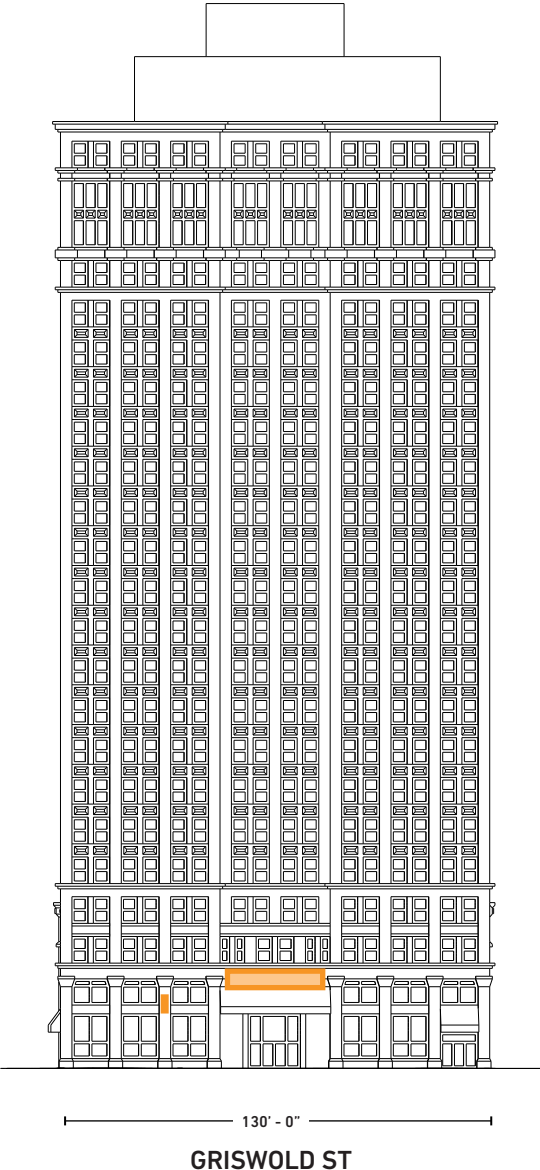
719 GRISWOLD

EXISTING ON-PREMISE IDENTIFICATION SIGN

CHRYSLER HOUSE SIGN

EXISTING ON-PREMISE BUSINESS SIGN

MIKE'S KABOB GRILLE BLADE SIGN



WEST ELEVATION

719 GRISWOLD

PROPOSED OFF-PREMISE ADVERTISING SIGN

PROPOSED NEW SIGN SIZE: 60'H X 25'W

PROPOSED NEW SIGN AREA: 1500 SQ. FT.

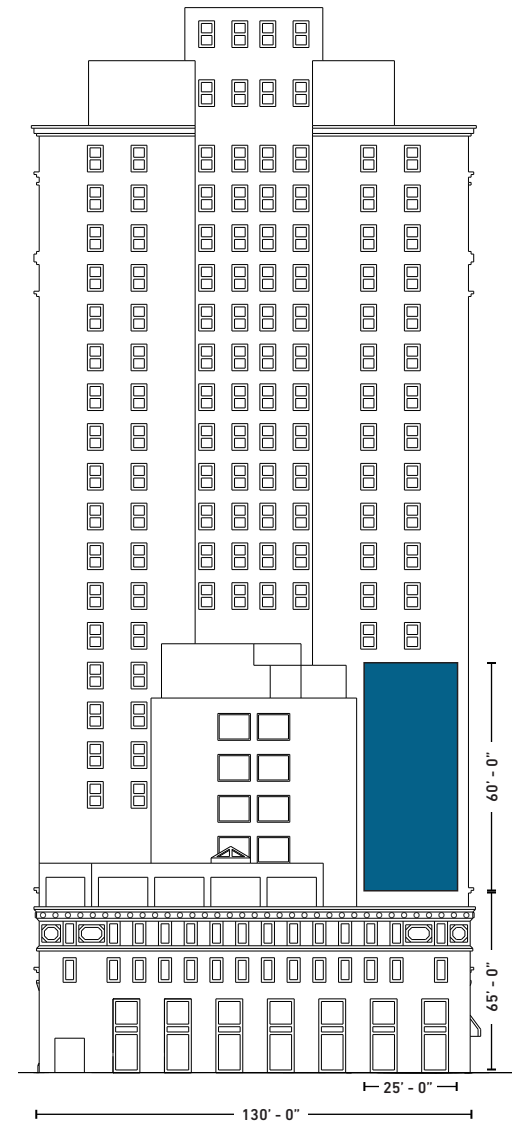
PROPOSED SIGN CONSTRUCTION TYPE:

STRETCHED MESH VINYL ANCHORED TO BUILDING IN MORTAR EXCLUSIVELY

PROPOSED SIGN ILLUMINATION:

EXTERNAL SURFACE MOUNTED LIGHTING

PROPOSED SIGN MOTION: STATIC



SHELBY ST

SIGNAGE INSTALL SPECIFICATIONS

719 GRISWOLD

MANUFACTURER ANCHOR SPEC:

STAINLESS STEEL WEDGE ANCHOR - SEE
ADDITIONAL DETAILS ON PAGE 8.



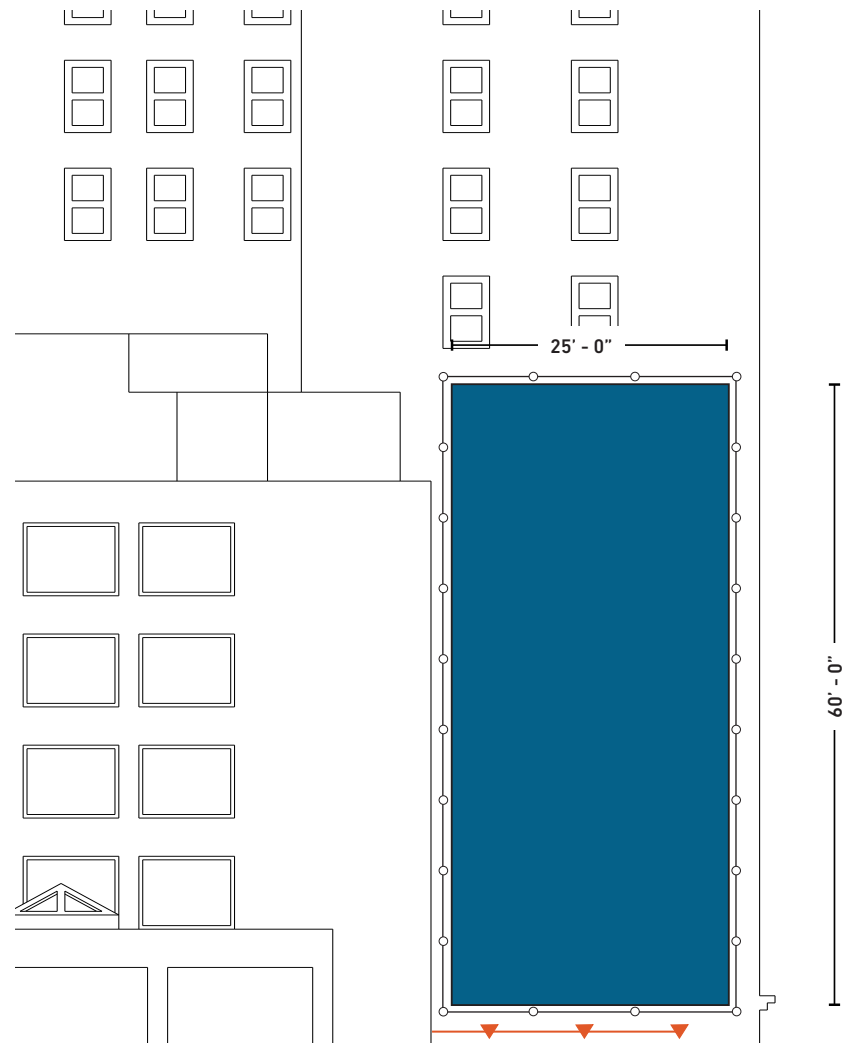
SIZE OF ANCHORS: 3" TO 4" L X 3/8" D

- **AMOUNT OF ANCHOR POINTS:** (28) TOTAL - SEE
ADDITIONAL DETAILS ON PAGE 8. EACH CORNER
INCLUDES (2) ANCHOR POINTS.

- ▼ **INSTALLED LIGHTS:** (3) TOTAL - CONDUIT TO FLOOD
LIGHT FIXTURES FACE MOUNTED TO BUILDING ALONG
MORTAR JOINTS. SEE LIGHT SPEC ON PAGE 7.

REPARATIONS TO AREAS AFFECTED: TUCK POINT
ALL MORTAR JOINTS AFFECTED BY SIGNAGE
INSTALLATION

*Any work related to advertising signage will not cause permanent
impacts to facade



SIGNAGE MATERIAL + LIGHTING

719 GRISWOLD

SIGNAGE SPECIFICATIONS



Technical Data Sheet UltraMesh® 100

UltraMesh® 100 is a 10 oz. PVC coated polyester mesh, printable on two sides with UV and Solvent inks. Allowing 30% air-flow through, UltraMesh 100 is best suited for large images on building, stadium and fence wraps, murals, signs, banners, protective barriers for scaffolding as well as theatrical and TV backdrops. Available in seamless wide-widths ranging from 126"- 196".

Material Details

CHARACTERISTICS	TEST METHOD	METRIC	ENGLISH
Support Cloth	DIN 60001	Polyester	Polyester
Yarn dtex	DIN EN ISO 2060	1100 x 1100 dtex	1000 x 1000 denier
Type of Coating	N/A	PVC	PVC
Total Weight	DIN EN ISO 2286-2	340 g/m ²	10 oz/yd ²
Tensile Strength	DIN EN ISO 1421	204 x 184 kgF/5cm	225 x 203 lbs/in
Tear Strength (warp/weft)	DIN 53363	2500 x 1300 kgF/5cm	168 x 55 lbs/in
Flame Resistance	DIN 75200	NFPA701, Title 19, CSFM, B1	
Low Temperature (No Crack at:)	ISO 1876	Low at -30°C	Low at -22°F
RF Weldable (Heat Sealable)	DIN 53354	Yes	Yes
Air Permeability	ISO 9237	1580 liter/m ² /sec	
Fungus Resistant	ASTM G21	Treated	

Applications

	Back-lit	Banner	Billboard	Block-out	Building Wrap	Display Systems	Trucksides
Applications		■			■		

Ink Printability

Solvent	Eco Solvent	UV	Screen Printing	Dye Transfer	Dye Direct
■	□	■	■		

Key: ■ - Excellent □ - Good

The information on physical and chemical characteristics is based upon tests believed to be reliable. The values are intended only as a source of information. A legally binding guarantee of specific properties is not to be inferred from our specifications. They are given without warranty and do not constitute a warranty. The purchaser should independently determine, prior to use, the suitability of this material for his/her specific purpose. (Data represents averages and is not intended for use as a specification.)

ULTRAFLEX
www.ultraflexXX.com
Updated: 12/2008

Ultraflex Headquarters
1578 Sussex Turnpike, Building 4
Randolph, NJ 07869
P. 973-627-8608 F. 973-627-8506

Ultraflex Europe Ltd.
Unit 2 Hardwick Rd Industrial Park
Great Gransden
Bedfordshire, England SG193BJ
P. +44 1767 677100 F. +44 1767 677190

Ultraflex Mexico
Avenida 316-B Col. Granjas Mexico
Mexico City, 08400
P. +52 5531-823-632 F. +52 5558-037-809

LIGHTING SPECIFICATIONS

FXLED150T



Color: Bronze

Weight: 20.9 lbs

Project:	Type:
Prepared By:	Date:

Driver Info		LED Info	
Type	Constant Current	Watts	150W
120V	1.39A	Color Temp	5000K (Cool)
208V	0.81A	Color Accuracy	72 CRI
240V	0.70A	L70 Lifespan	100,000
277V	0.60A	Lumens	20,686
Input Watts	163.60W	Efficacy	126.4 LPW

Technical Specifications

Listings

UL Listed:
Suitable for wet locations. Suitable for mounting within 1.2m (4ft) of the ground.

IESNA LM-79 & IESNA LM-80 Testing:
RAB LED luminaires and LED components have been tested by an independent laboratory in accordance with IESNA LM-79 and LM-80.

DLC Listed:
This product is listed by Design Lights Consortium (DLC) as an ultra-efficient premium product that qualifies for the highest tier of rebates from DLC Member Utilities. DLC Product Code: P0000173K

LED Characteristics

Lifespan:
100,000-hour LED lifespan based on IES LM-80 results and TM-21 calculations

LEDs:
Long-life, high-efficacy, surface-mount LEDs

Color Stability:
LED color temperature is warranted to shift no more than 200K in color temperature over a 5-year period

Color Uniformity:
RAB's range of Correlated Color Temperature follows the guidelines of the American National Standard for Specifications for the Chromaticity of Solid State Lighting (SSL) Products, ANSI

Electrical

Driver:
Constant Current, Class 2, 120-277V, 50/60 Hz, 120V: 1.39A, 208V: 0.81A, 240V: 0.70A, 277V: 0.60A

THD:
1.95% at 120V, 8.2% at 277V

Power Factor:
99.9% at 120V, 97.6% at 277V

Note:
All values are typical (tolerance +/- 10%)

Construction

IP Rating:
Ingress Protection rating of IP66 for dust and water

EPA:
2

Ambient Temperature:
Suitable for -40°C (-40°F) to 40°C (104°F)

Lens:

Tempered glass lens included

Housing:

Die-cast aluminum housing and door frame

Mounting:

Heavy-duty Trunnion mount with stainless steel hardware

Finish:

Formulated for high durability and long-lasting color

Other

Warranty:
RAB warrants that our LED products will be free from defects in materials and workmanship for a period of five (5) years from the date of delivery to the end user, including coverage of light output, color stability, driver performance and fixture finish. RAB's warranty is subject to all terms and conditions found at rablighting.com/warranty.

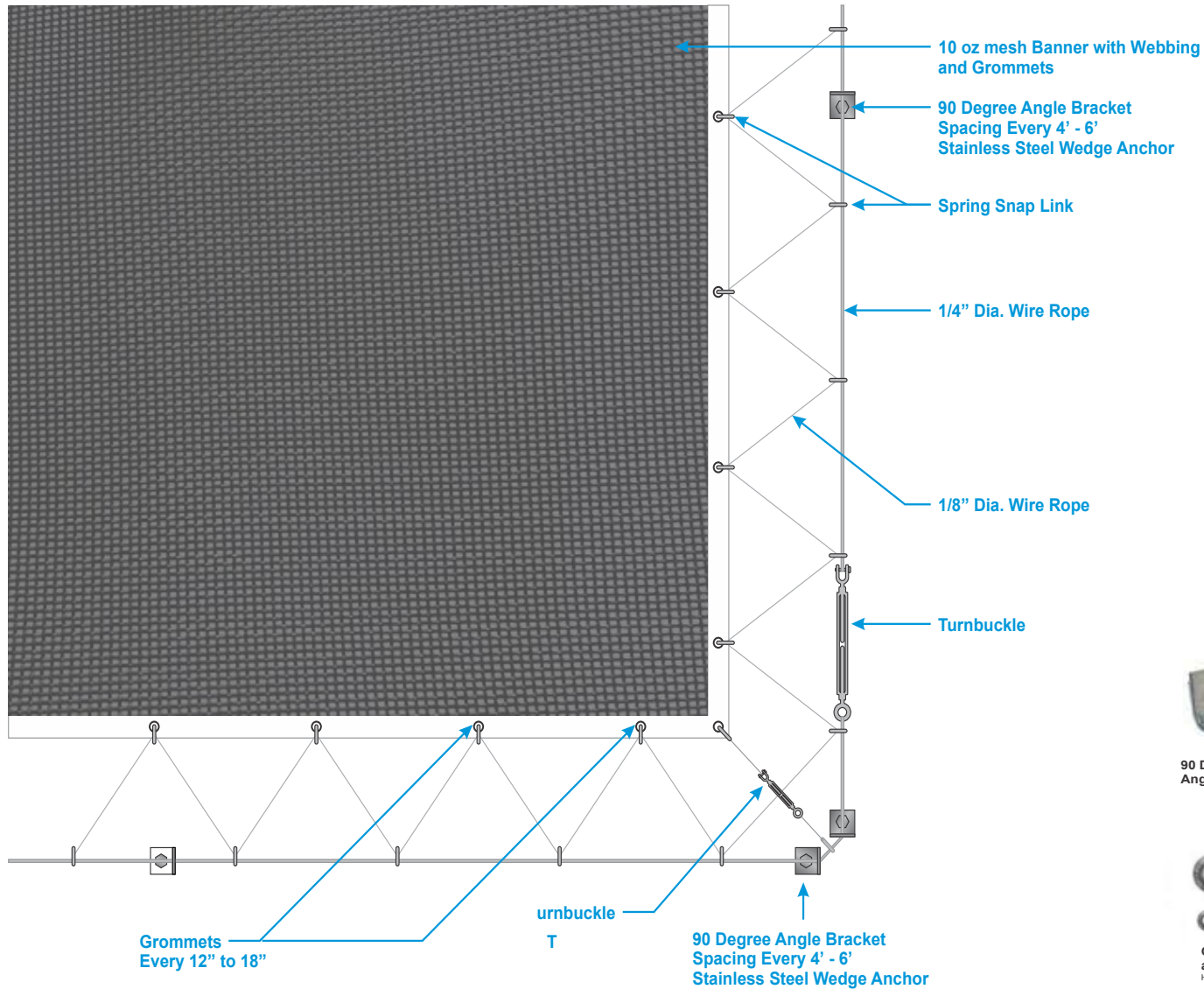
Buy American Act Compliance:

RAB values USA manufacturing! Upon request, RAB may be able to manufacture this product to be compliant with the Buy American Act (BAA). Please contact customer service to request a quote for the product to be made BAA compliant.

*1 light fixture every 8' horizontally. Lighting Engineer to verify NITs meet ordinance prior to installation.

SIGNAGE INSTALLATION

719 GRISWOLD



Banner with Webbing and Grommets



90 Degree 2-hole Wall Angle Bracket



Stainless Steel Wedge Anchor



1x19 - SS 316
Stainless Steel Wire Rope
1/8" Dia. Breaking Strength = 1,780 Lbs
Weight Per 100' = 3.3 Lbs
1/4" Dia. Breaking Strength = 6,900 Lbs.
Weight Per 100' = 12.5 lbs



Cable Zip Line Turnbuckle and Mini Turnbuckle
High Quality Hot Galvanized, Drop Forged Steel



3/16" Electro Galvanized Spring Snap Link
Working Load Limit: 105 lbs.

EXISTING CONDITIONS

719 GRISWOLD



EAST ELEVATION



WEST ELEVATION

EAST ELEVATION



SOUTH ELEVATION



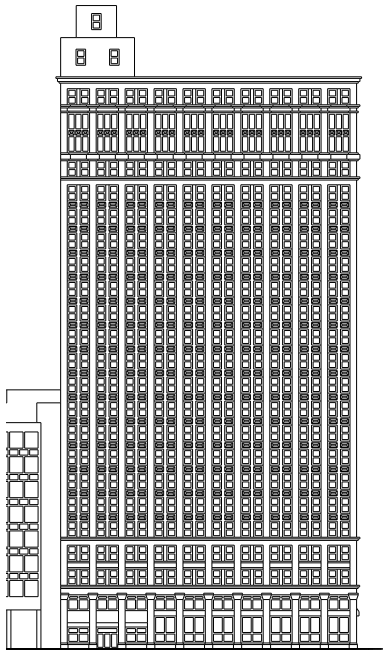
WEST ELEVATION



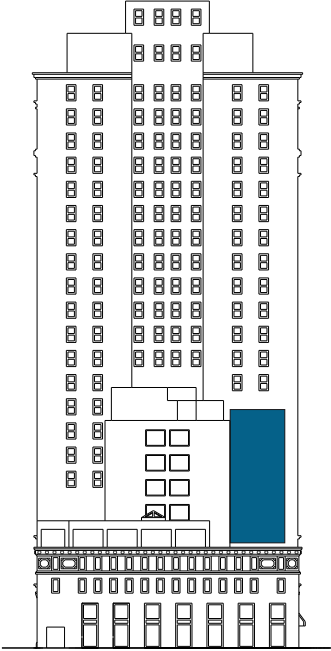
SUMMARY

719 GRISWOLD

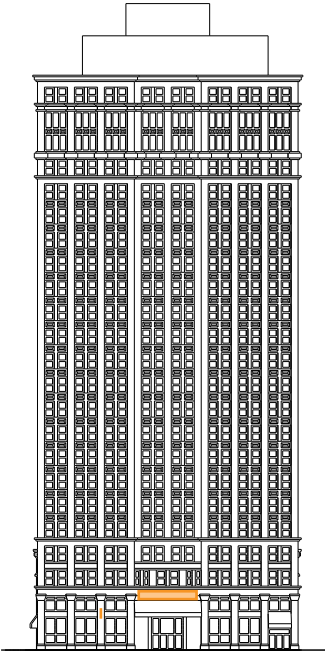
SOUTH ELEVATION



WEST ELEVATION



EAST ELEVATION



SIGN SUMMARY	
Signage	Various Retailers behind Storefronts

SIGN SUMMARY	
Proposed Sign	TBD
Size & Area	60' H x 25' W ; 1500 S.F.
Purpose	Off-Premise Advertising

SIGN SUMMARY	
Existing Sign	Chrysler House
Purpose	Building Identification
Existing Sign	Mike's Kabob Grille Blade Sign
Purpose	On-Premise Business Advertising

719 GRISWOLD

